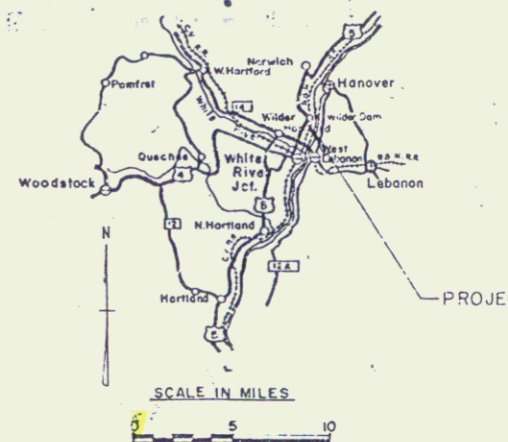


STATE OF VERMONT
DEPARTMENT OF HIGHWAYS
Proposed Improvement

TOWN OF HARTFORD
COUNTY OF WINDSOR
U.S. 5 - WHITE RIVER JCT. - BRADFORD ROAD

FEDERAL AID
URBAN PROJECT



INDEX OF SHEETS

1	TITLE SHEET	35	E-11 INTERSTATE ROUTE MARKERS
2	TYPICAL SHEET	36	E-12 U.S. ROUTE MARKERS
3	QUANTITY SHEET	37	E-15 REGULATORY SIGNS
4	DRAINAGE SHEET	38	E-16 WARNING SIGNS
5	EARTHWORK SHEET	39	E-18 GUIDE SIGNS
6	BLANK	40	E-19 STANDARD SIGN PLACEMENT
7	FLOW DETAIL SHEET	41	E-20 DELINEATORS, HAZARD MARKERS & MILEPOSTS
8-10	PLAN & PROFILE SHEETS	42	E-21 GROUND MOUNTED SIGN SUPPORTS
11	BLANK	43	BLANK
12	A-61 SOLID ROCK EXCAVATION	44	E-31 FEDERAL AID CONSTRUCTION IDENTIFICATION SIGNS
13	B-1 BANKING TABLES	45	G-3 THREE CABLE GUARD RAIL
14	B-5 TYPICAL SLOPE GRADING	46	G-4 STEEL MARKER POSTS
15	B-10 EMBANKMENT ON A SLOPE	47	J-1 PROJECT & BOUNDARY MARKERS
16	B-11 METHOD OF SLOPE STABILIZATION	48	BLANK
17	B-13 WEDGE INTERSECTIONS	49-67	MARLINE CROSS-SECTIONS SHEETS
18	B-16 TRIANGULAR ISLAND DESIGNS	68-70	TRAFFIC SIGN LOCATION SHEETS
19	BLANK	71	TRAFFIC SIGN SUMMARY SHEET
20	C-1 CURBS	72	TRAFFIC SIGN DESIGN & CONSTRUCTION DETAILS
21	C-1A CURBS	72A-72B	UTILITY CONSTRUCTION DETAILS FOR RIGHT-OF-WAY DETAILS SEE RIGHT-OF-WAY PLANS FOR THIS PROJECT
22	C-2A DRIVE ENTRANCES		
23	C-2B DRIVE ENTRANCES		
24	D-2 HEADWALLS		
25	D-3 JUTE MATTING		
26	D-4 ELBOWS		
27	BLANK		
28	D-8 R.C.D.I.S.		
29	D-9 DROP INLET TOPS		
30	D-10 DROP INLET TOPS		
31	D-11 DETAILS OF GRATES & COVERS		
32	D-13 CONCRETE CATCH BASIN OR MANHOLE		
33	BLANK		
34	E-1 BARRICADES, SIGNS & LIGHTS		

BEGINNING AT A POINT 2796 FEET SOUTHERLY OF THE
HARTFORD-NORWICH TOWN LINE AND EXTENDING
NORTHERLY 0.384 MILE.
LENGTH OF ROADWAY 2,025 FEET = 0.384 MILE
LENGTH OF PROJECT 2,025 FEET = 0.384 MILE

PROJECT NAME & NUMBER TYPE PAVEMENT AREA
HARTFORD U 041-3(7) BIT. CONC. PAVT. 7300 SQ.
RECORD PLANS
MATERIALS



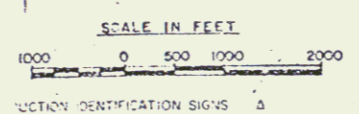
F.A. URBAN LIMITS

CONVENTIONAL

ROW	CONVENTIONAL
COUNTY LINE	---
TOWN LINE	---
EDGE LINE	---
STONE WALL	---
UNFENCED PROPERTY	---
GRADE RAIL	---
TRAVELLED WAY	---
RAILROAD	---
RETAINING WALL	---
CENTER LINE	---
SURVEY LINE	---
CULVERT	---
DROP INLET	---
TRAVEL POLE	---
WATER POLE	---
TELEPHONE POLE	---
TREES	---
WELLS	---
LIMITED ACCESS	---

SLOPE RIGHTS

GRADE ELEVATION	---
CLIQUE DATA	---
DEFLECTION ANGLE	---
RADIUS OF CURVE	---
PERCENT GRADE	---
TANGENT DISTANCE	---
EXTERNAL DISTANCE	---
CHORD OF CURVE	---
POINT OF TANGENCY	---
STATION DISTANCE	---
STATION ON S.D. POINT	---



MP 4.752
U.S. 5 1+00
BEGINNING
U 041-3(7)

MPS 136
U.S. 5 21+25.00
END PROJECT
U 041-3(7)

THESE PLANS ARE SUBJECT TO SUCH REVISIONS AS MAY BE
REQUIRED BY THE BUREAU OF PUBLIC ROADS OR THE COMMISSIONER
OF HIGHWAYS.

CONSTRUCTION IS TO BE CARRIED ON IN ACCORDANCE WITH
THESE PLANS AND THE STANDARD SPECIFICATIONS FOR HIGHWAY AND BRIDGE
CONSTRUCTION DATED APRIL 1964, AS APPROVED BY THE BUREAU OF
PUBLIC ROADS ON OCTOBER 2, 1964, INCLUDING ALL SUBSEQUENT
APPROVED REVISIONS AND SIGN REVISION SPECIFICATIONS AND SPECIAL
PROVISIONS AS ARE INCORPORATED IN THESE PLANS.

Proj # U 041-3(7)
Plan # 99R908
TO BE BUILT IN ITS ENTIRETY
DURING STAGE 1 CONSTRUCTION

J. Schaefer 1/20/65
G. M. Lane 1/20/65
ADD. J. Schaefer 1/20/65

U 041-3(7)

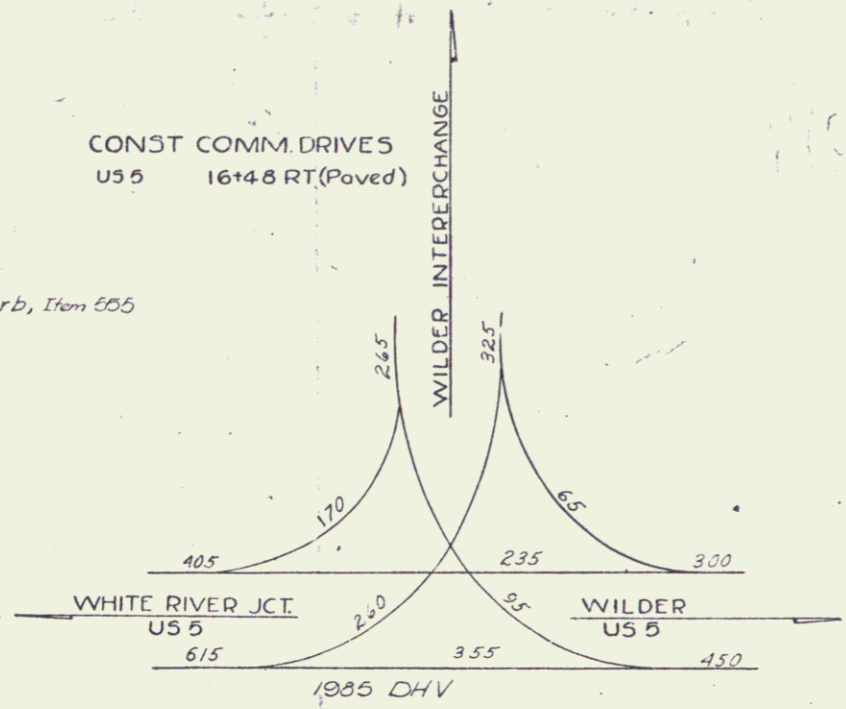
DATE	1/27/82
BY	W. J. B.
CHECKED	W. J. B.
APPROVED	W. J. B.
SCALE	AS SHOWN
PROJECT	US 5
SHEET NO.	22A
TOTAL SHEETS	22

CONST DRIVES
 U55 1+90 LT
 U55 3+25 RT
 U55 3+30 LT
 U55 14+16 RT (Paved)
 U55 14+75 RT (Paved)
 U55 16+17 RT (Paved)

CURB
 U55 3+30-14+08 RT
 U55 14+24-14+67 RT
 U55 14+59-14+77 RT
 U55 16+6-16+8 RT

Bituminous Concrete Curb, Item 505
 47+50-47+79 LT
 47+50-48+74 RT

CONST COMM. DRIVES
 U55 16+4.8 RT (Paved)

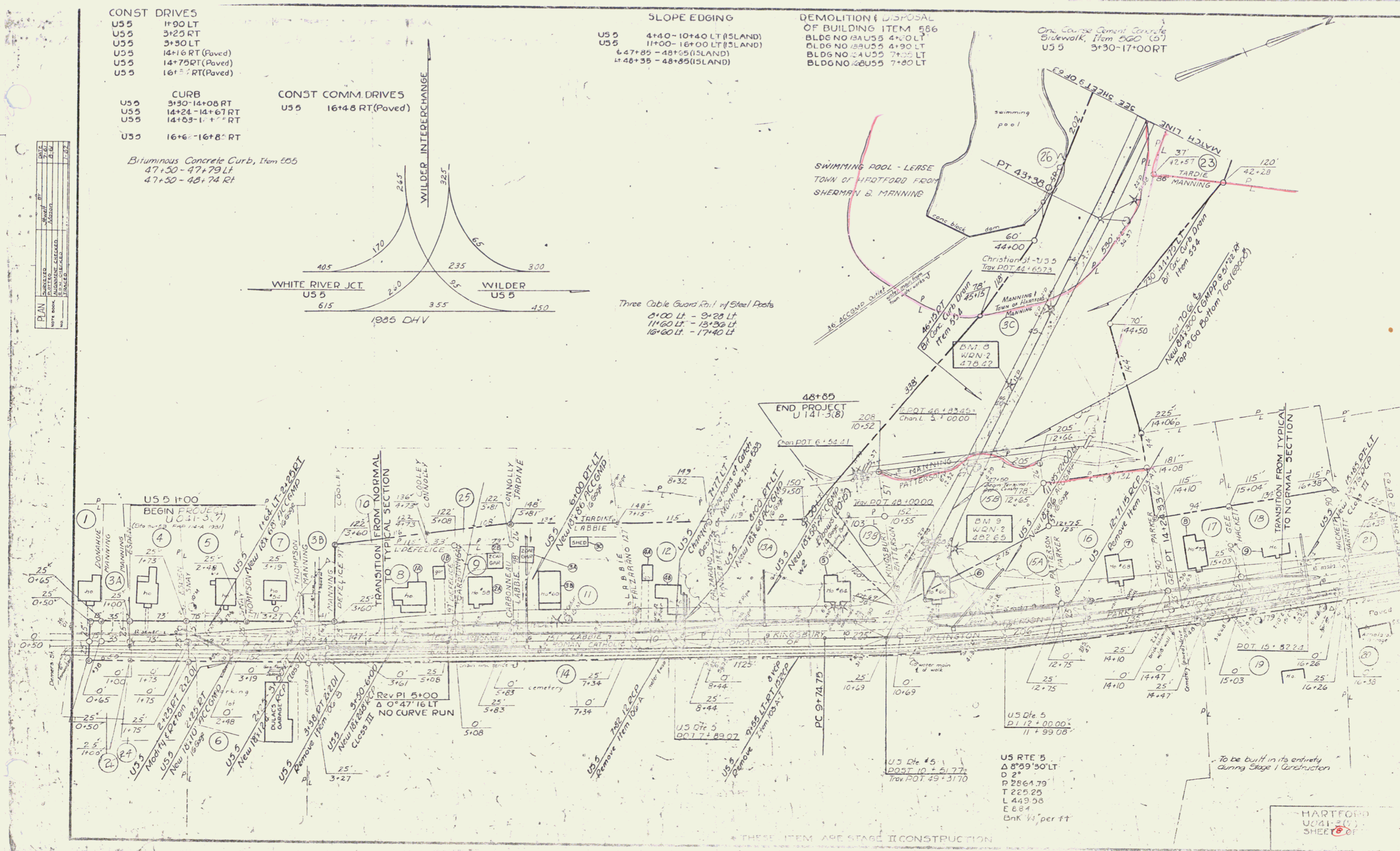


SLOPE EDGING
 U55 4+40-10+40 LT (ISLAND)
 U55 11+00-16+00 LT (ISLAND)
 U55 4+7+85-48+55 (ISLAND)
 U55 4+48+35-48+85 (ISLAND)

DEMOLITION & DISPOSAL OF BUILDING ITEM 586
 BLDG NO 18A U55 4+30 LT
 BLDG NO 18A U55 4+90 LT
 BLDG NO 14A U55 7+35 LT
 BLDG NO 18B U55 7+80 LT

One Course Cement Concrete Sidewalk, Item 500 (5)
 U55 3+30-17+00 RT

Three Cable Guard Rail w/ Steel Posts
 0+00 LT - 3+25 LT
 11+60 LT - 13+30 LT
 16+60 LT - 17+40 LT



US RTE 5
 Δ 8°59'30" LT
 D 2°
 P 2861.79
 T 225.25
 L 449.98
 E 88.4
 Chk 1/4 per ft

HARTFORD
 U041-30
 SHEET 22A

22a 2

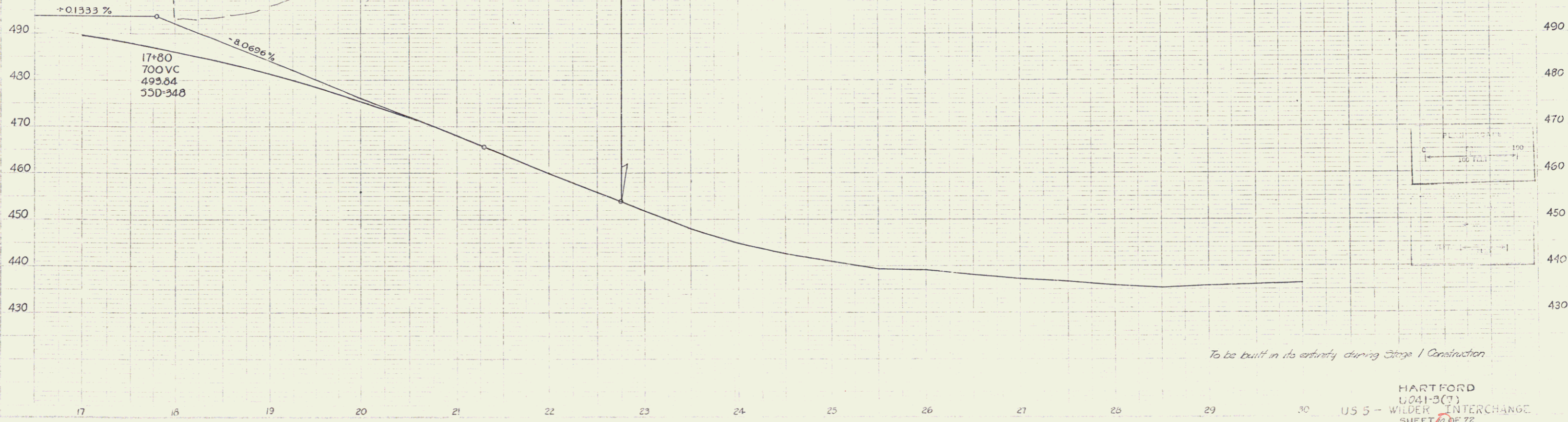
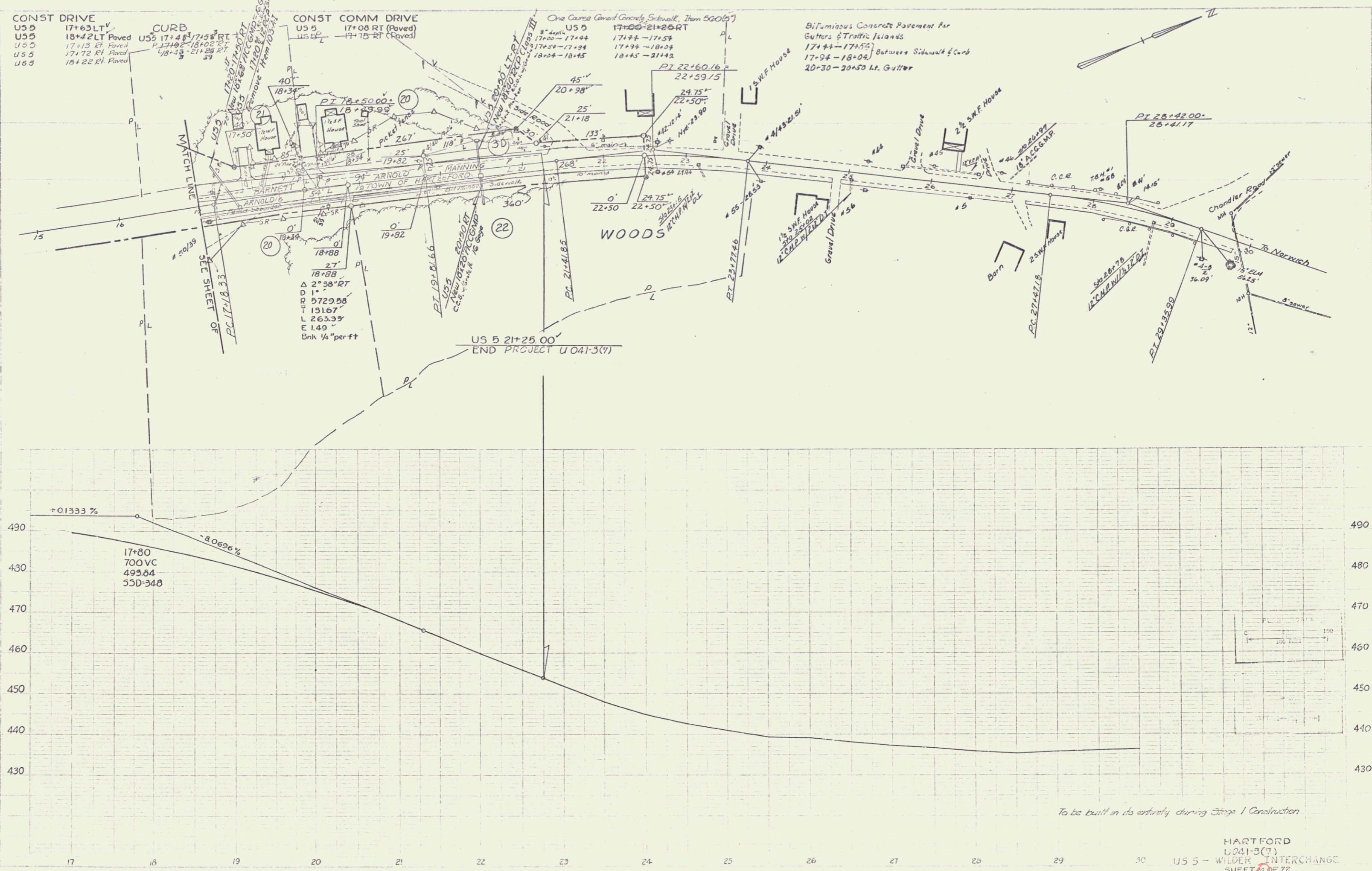
CONST DRIVE
 US 5 17+63 LT V
 US 5 18+42 LT Paved
 US 5 17+13 RT Paved
 US 5 17+92 RT Paved
 US 5 18+22 RT Paved

CURB
 US 5 17+48 RT
 US 5 17+92 RT
 US 5 18+15 RT

CONST COMM DRIVE
 US 5 17+08 RT (Paved)
 US 5 17+15 RT (Paved)

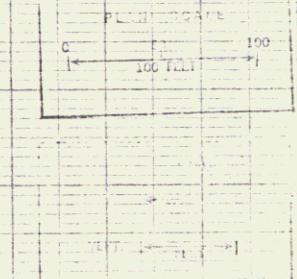
One Course Concrete Sidewalk, Item 500(5)
 US 5 17+00-17+44
 US 5 17+59-17+94
 US 5 18+24-18+45
 US 5 17+44-17+59
 US 5 17+94-18+04
 US 5 18+45-21+42

Bituminous Concrete Pavement for
 Gutters & Traffic Islands
 17+44-17+59
 17+94-18+04
 20+30-20+50 Lt. Gutter



M.I.L.S.T. 3/62

M.I.L.S.T. 3/62



HARTFORD
 U041-3(T)
 US 5 - WILDER INTERCHANGE
 SHEET 23 OF 72

23a 3