

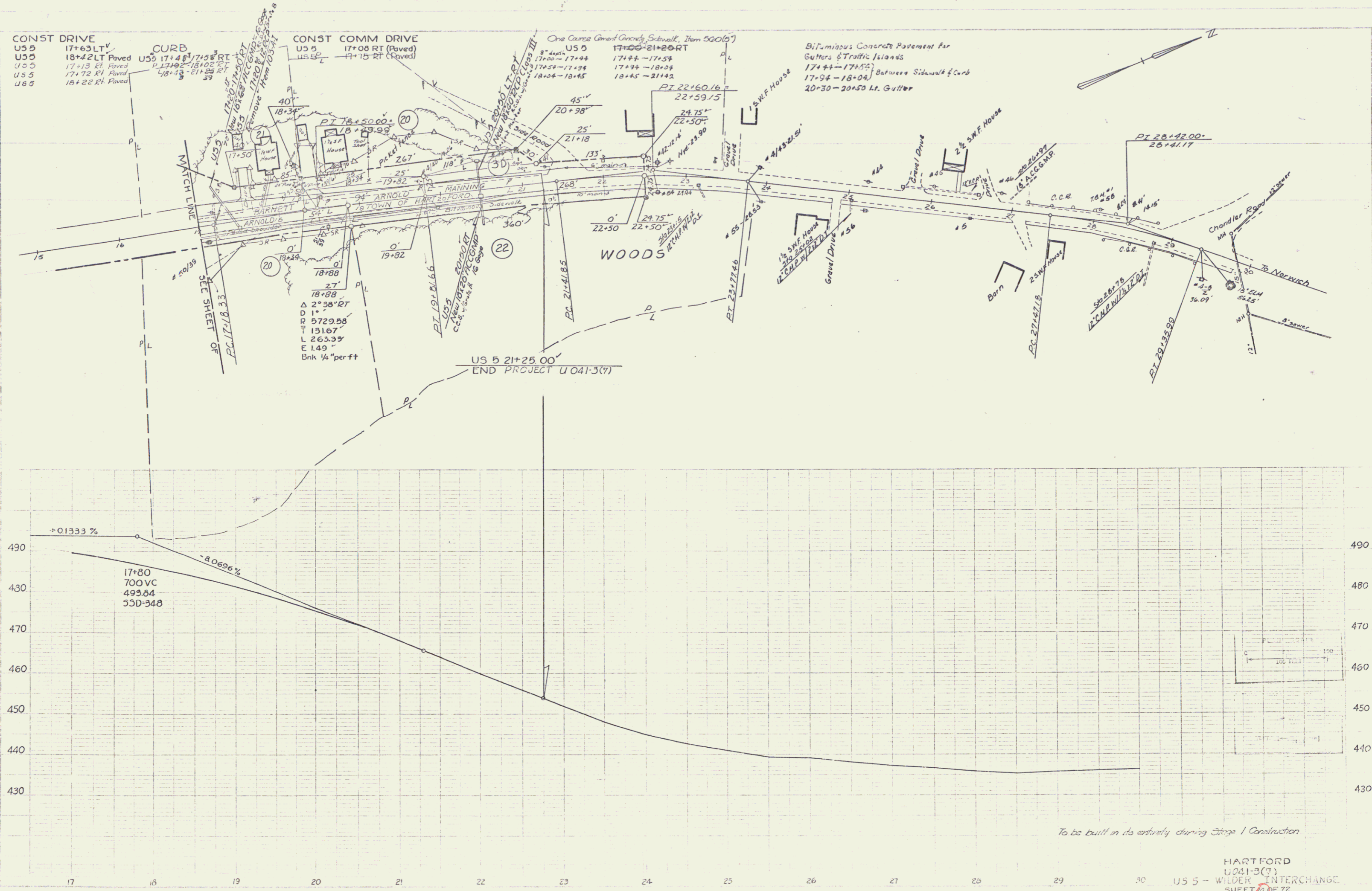
CONST DRIVE
 US 5 17+63 LT V
 US 5 18+42 LT Paved
 US 5 17+13 RT Paved
 US 5 17+92 RT Paved
 US 5 18+22 RT Paved

CURB
 US 5 17+48 RT
 US 5 17+92 RT
 US 5 18+15 RT

CONST COMM DRIVE
 US 5 17+08 RT (Paved)
 US 5 17+15 RT (Paved)

One Course Concrete Sidewalk, Item 500(5)
 US 5 17+00-17+44
 US 5 17+54-17+94
 US 5 18+04-18+45

Bituminous Concrete Pavement for
 Gutters & Traffic Islands
 17+44-17+54
 17+94-18+04
 20+30-20+50 Lt. Gutter



M.I.L.S.T. 3/62

M.I.L.S.T. 3/62

To be built in its entirety during Stage 1 Construction

HARTFORD
 U041-3(T)
 US 5 - WILDER INTERCHANGE
 SHEET 23 OF 72

23a 3