

INDEX OF SHEETS

SHEET NO.	TITLE PAGE
1	TITLE PAGE
2	TYPICAL CROSS-SECTION OF IMPROVEMENT
3	BANKING AND WIDENING TABLES
4	PLAN AND PROFILE
11	STANDARD STRUCTURE SHEET S 28 PIPE CULVERTS
12	" " " " S 30 GUARD RAIL
13	" " " " S 30A BOUNDARY MARKERS
14	" " " " S 40 BARRICADES SIGNS & LIGHTS
15	" " " " S 41 TYPICAL GRADING
16	1641 CROSS SECTIONS

STANDARD STRUCTURE SHEETS APPROVED BY THE CHIEF ENGINEER VT STATE DEPT OF HIGHWAYS

S 28 APRIL 26, 1941
 S 30 MAY 12, 1941
 S 30A APRIL 19, 1941
 S 40 DECEMBER 18, 1945

(To Be Returned To R.O.W. Division)

Town of Northfield

PERPETUAL

EIGHT-OF-WAY DIVISION

STATE OF VERMONT
 STATE HIGHWAY DEPARTMENT

PLAN AND PROFILE OF PROPOSED
 STATE HIGHWAY

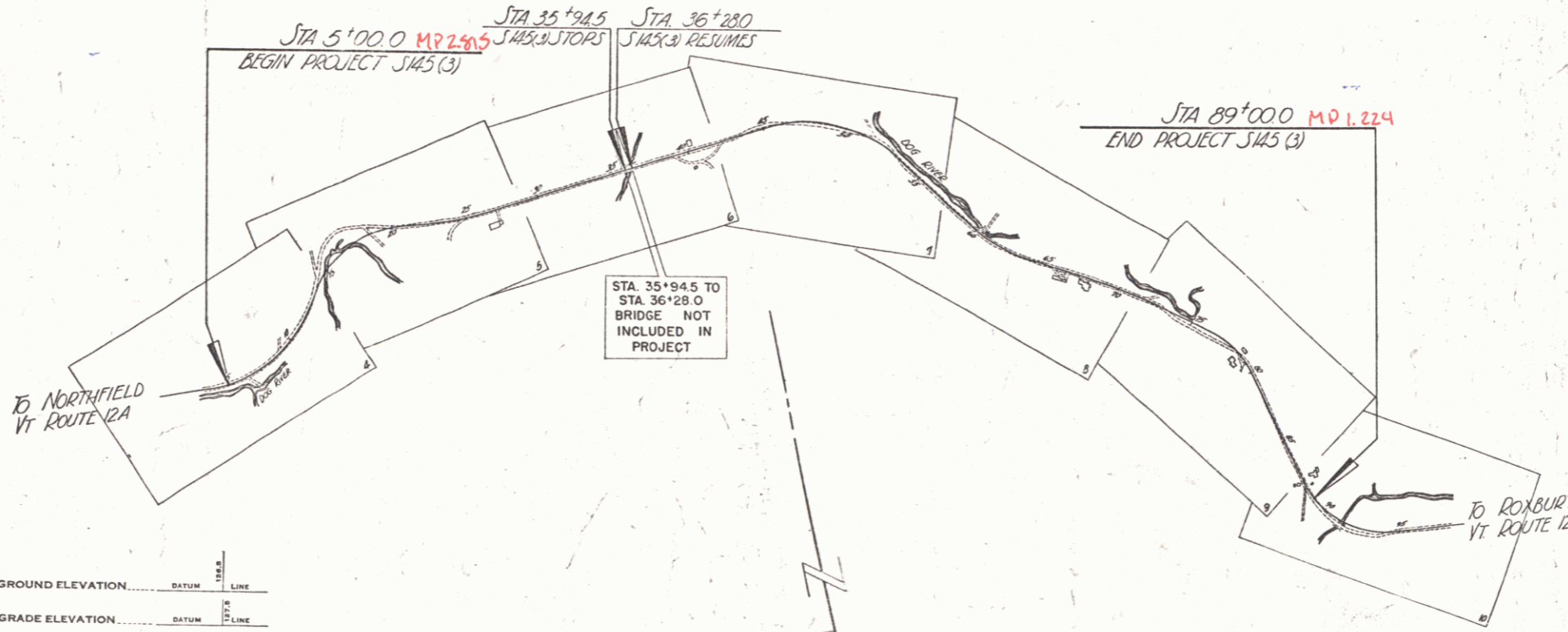
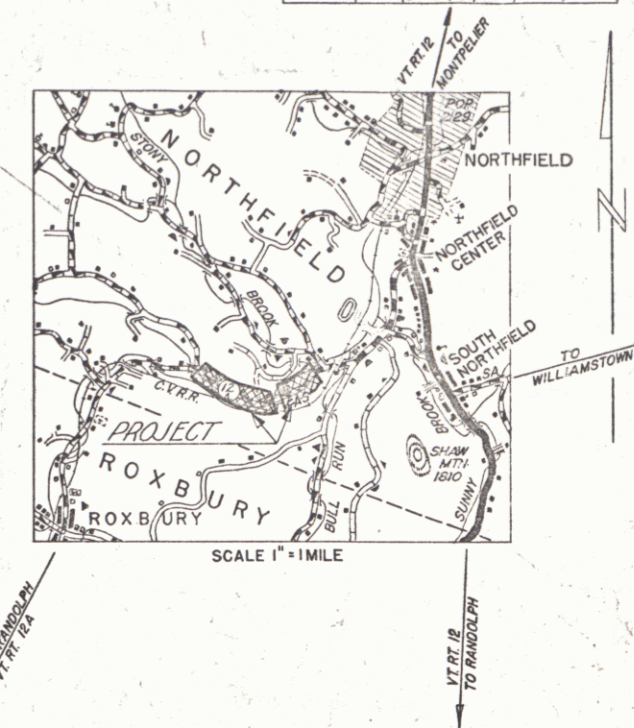
SECONDARY PROJECT

TOWN OF NORTHFIELD
 NORTHFIELD-ROXBURY ROAD
 VERMONT ROUTE 12A

BEGINNING AT A POINT APPROXIMATELY 8600 FEET SOUTHERLY FROM THE INTERSECTION OF VERMONT ROUTES 12 AND 12A IN NORTHFIELD CENTER AND EXTENDING 8396.8 FEET SOUTHWESTERLY EXCLUDING BRIDGE

LENGTH OF PROJECT 8396.8 LIN. FT. = 1.590 MILES

FED. ROAD DIST. NO.	STATE	DESIGN PROJ. NO.	FISCAL YEAR	SHEET NO.	TOTAL SHEETS
9	Vt.	145(3)	1946	1	47



CURVE DATA

DEFLECTION ANGLE	Δ
DEGREE OF CURVE	D
RADIUS OF CURVE	R
TANGENT DISTANCE	T
LENGTH OF CURVE	L
EXTERNAL DISTANCE	E
POINT OF INTERSECTION	P. I.
POINT OF CURVE	P. C.
POINT OF TANGENT	P. T.
POINT ON TANGENT	P. O. T.

SCALES

TITLE	1" = 500'
TYPICAL	1" = 2'
PLAN	1" = 50'
PROFILE HORIZONTAL	1" = 50'
PROFILE VERTICAL	1" = 10'
CROSS SECTIONS	1" = 5'

CONTRACTOR: Matthew Westbrook
 LACKNER, Insp'g. approx. 8,100 ft. southerly from intersection of Vt. Rts. 12 and 12A in Northfield Ctr. and extending 8,396.8 feet southwesterly excluding bridge

APPROVED: Feb. 12, 1947
 Commissioner of Highways

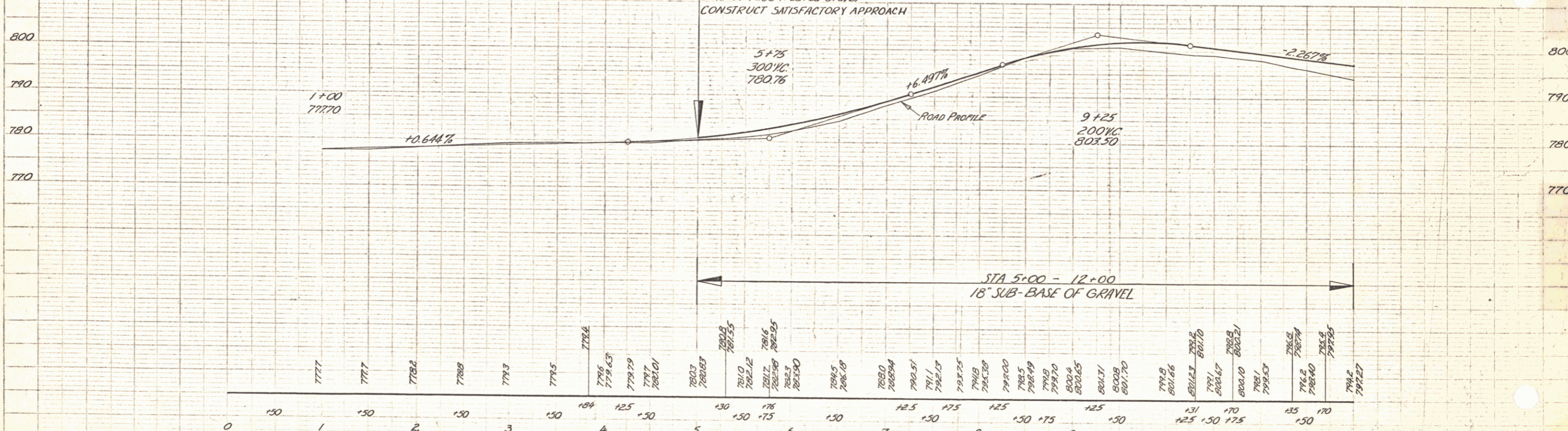
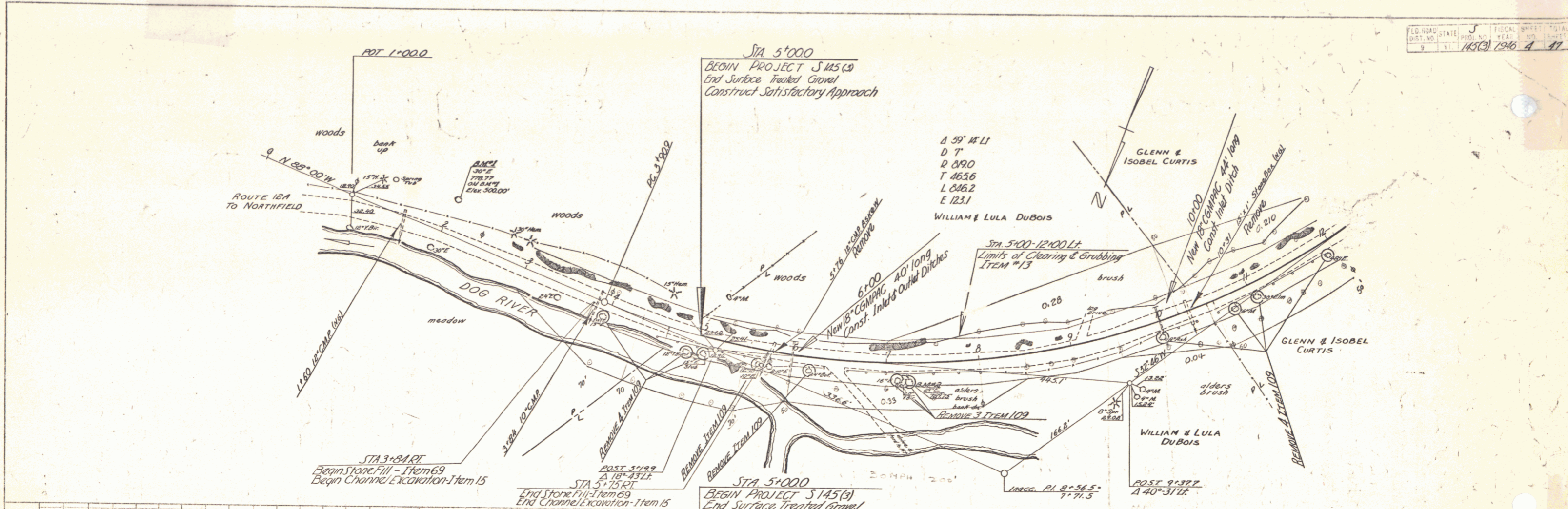
Pin # 998906

THESE PLANS ARE SUBJECT TO SUCH REVISIONS AS MAY BE REQUIRED BY THE PUBLIC ROADS ADMINISTRATION OR THE COMMISSIONER OF HIGHWAYS.
 CONSTRUCTION IS TO BE CARRIED ON IN ACCORDANCE WITH THE PLANS AND THE STANDARD ROAD AND BRIDGE SPECIFICATIONS OF 1936 AS APPROVED DECEMBER 29TH, 1936 BY THE PUBLIC ROADS ADMINISTRATION, INCLUDING ALL SUBSEQUENT APPROVED REVISIONS AND SUCH REVISED SPECIFICATIONS AND SPECIAL PROVISIONS AS ARE SUBMITTED WITH THE PLANS.

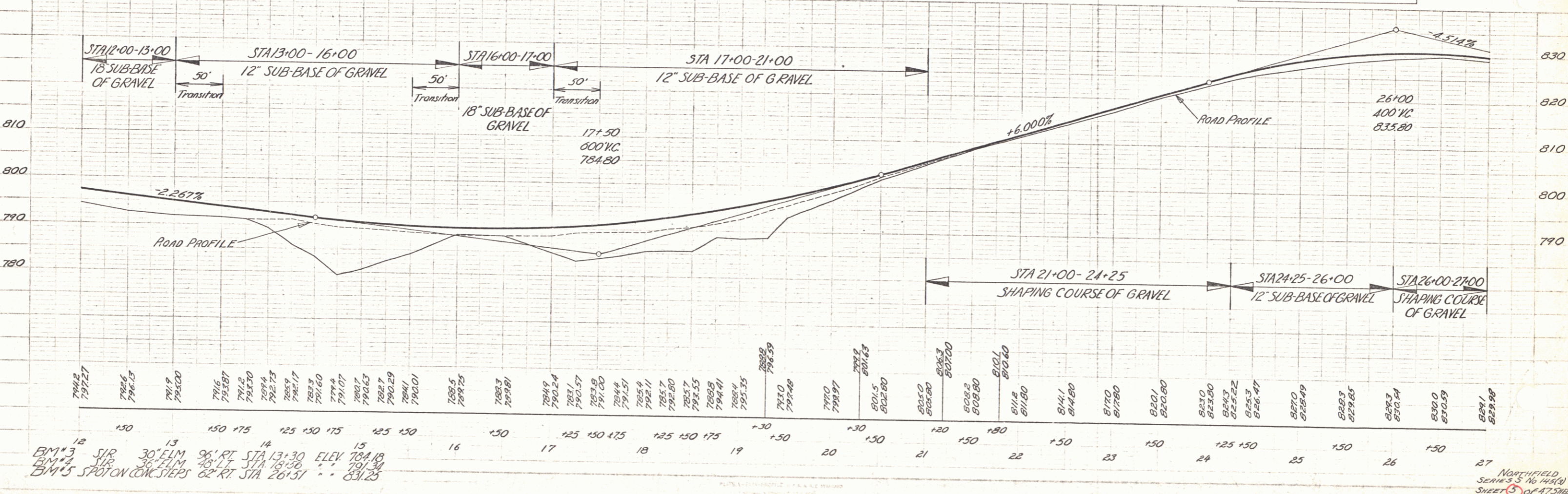
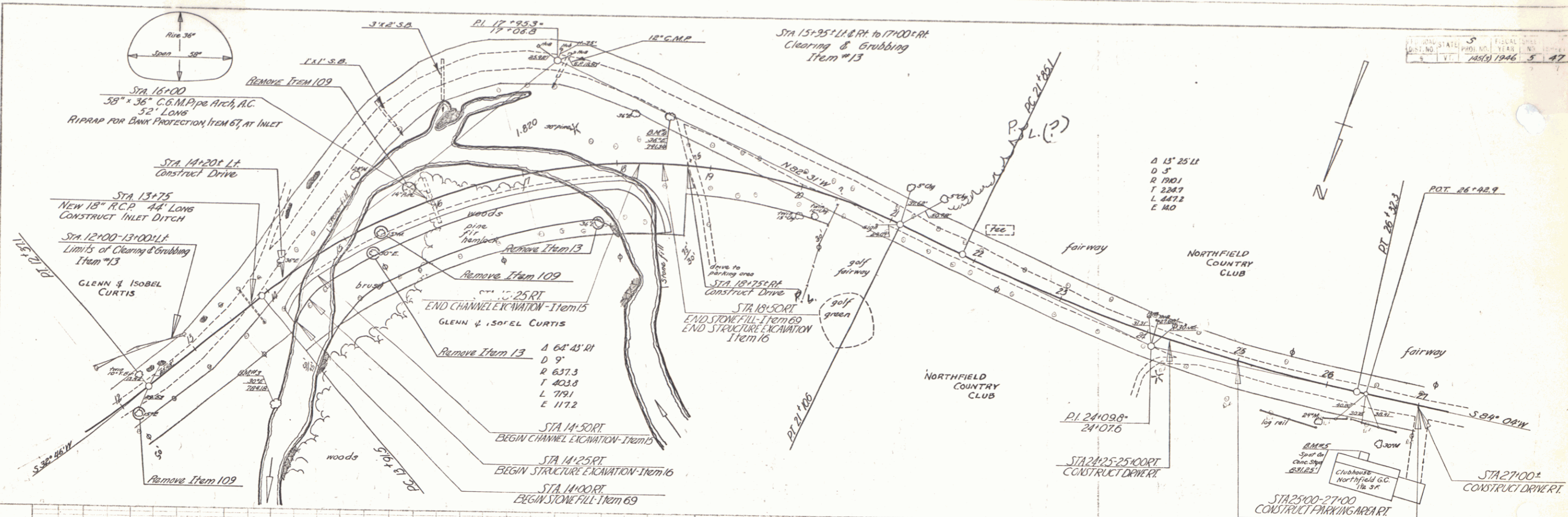
APPROVED: Jan 21, 1967
 APPROVED: Jan 21, 1947
 SERIES 5 No. 145(3) FILED
 SHEET 1 OF 47

PLAN
 1/4" = 100'
 S. L. LANE
 A. W. WYMAN

1/4" = 100'
 S. L. LANE
 A. W. WYMAN



BM #1 SIR 30' ELM 35' LT STA 2+04 ELEV. 778.77
 BM #2 SIR 24' ELM 17' RT STA 7+21 " " 789.75



PLAN
 DATE: 1946
 DRAWN BY: [Name]
 CHECKED BY: [Name]

PROFILE
 DATE: 1946
 DRAWN BY: [Name]
 CHECKED BY: [Name]

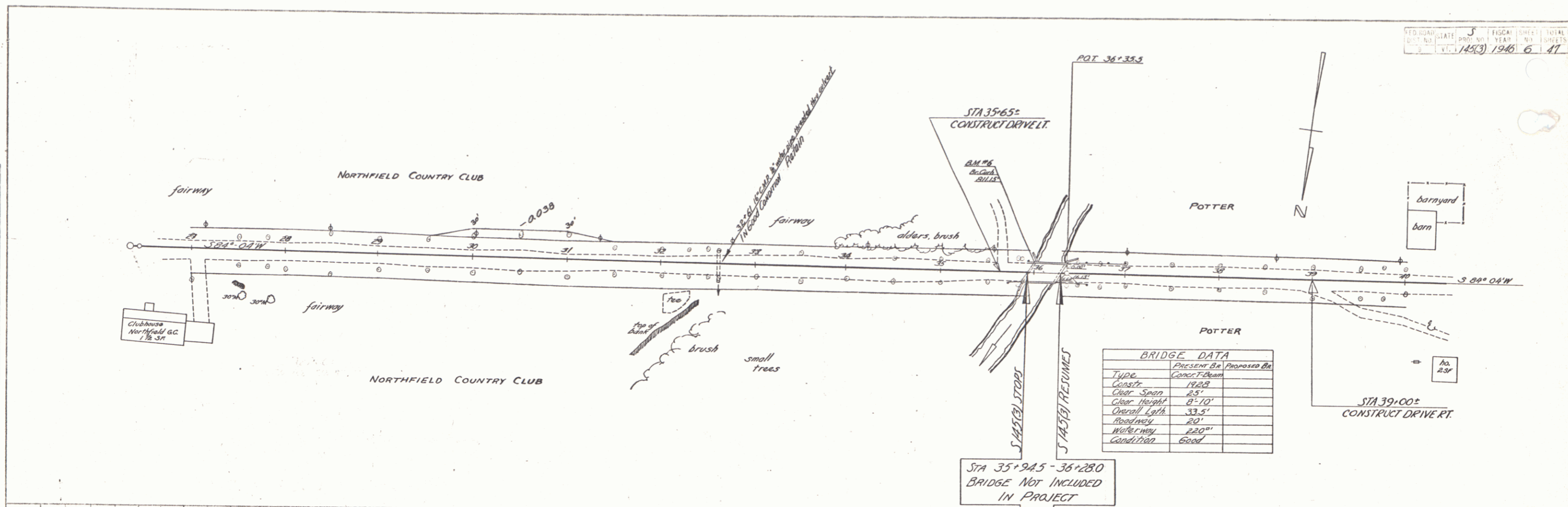
BM # 3 30' ELM STA 13+30 ELEV 784.18
 LIP # 3 36' FILM STA 13+36 ELEV 791.34
 BM # 5 SPOT ON CONC STEPS 62' RT STA 26+51 ELEV 831.25

STATE 5
 DIST. NO. 14519
 YEAR 1946
 SHEET 5 OF 47

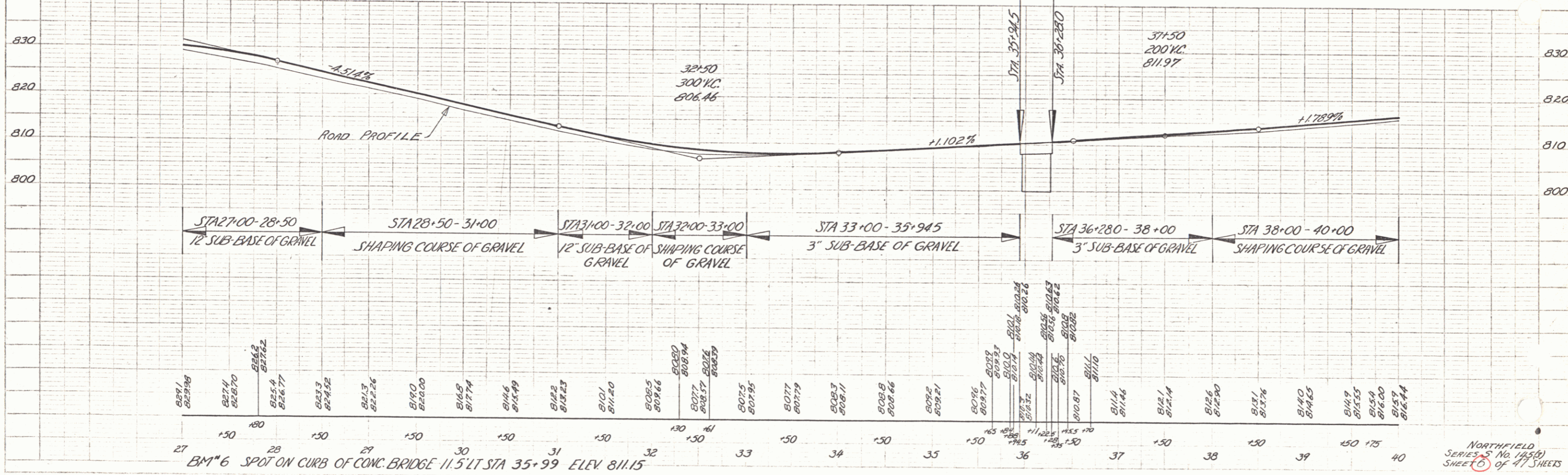
NORTHFIELD
 SERIES 3 No. 14519
 SHEET 5 OF 47 SHEETS

PLAN
 DRAWN BY
 CHECKED BY
 DATE

PROFILE
 DRAWN BY
 CHECKED BY
 DATE

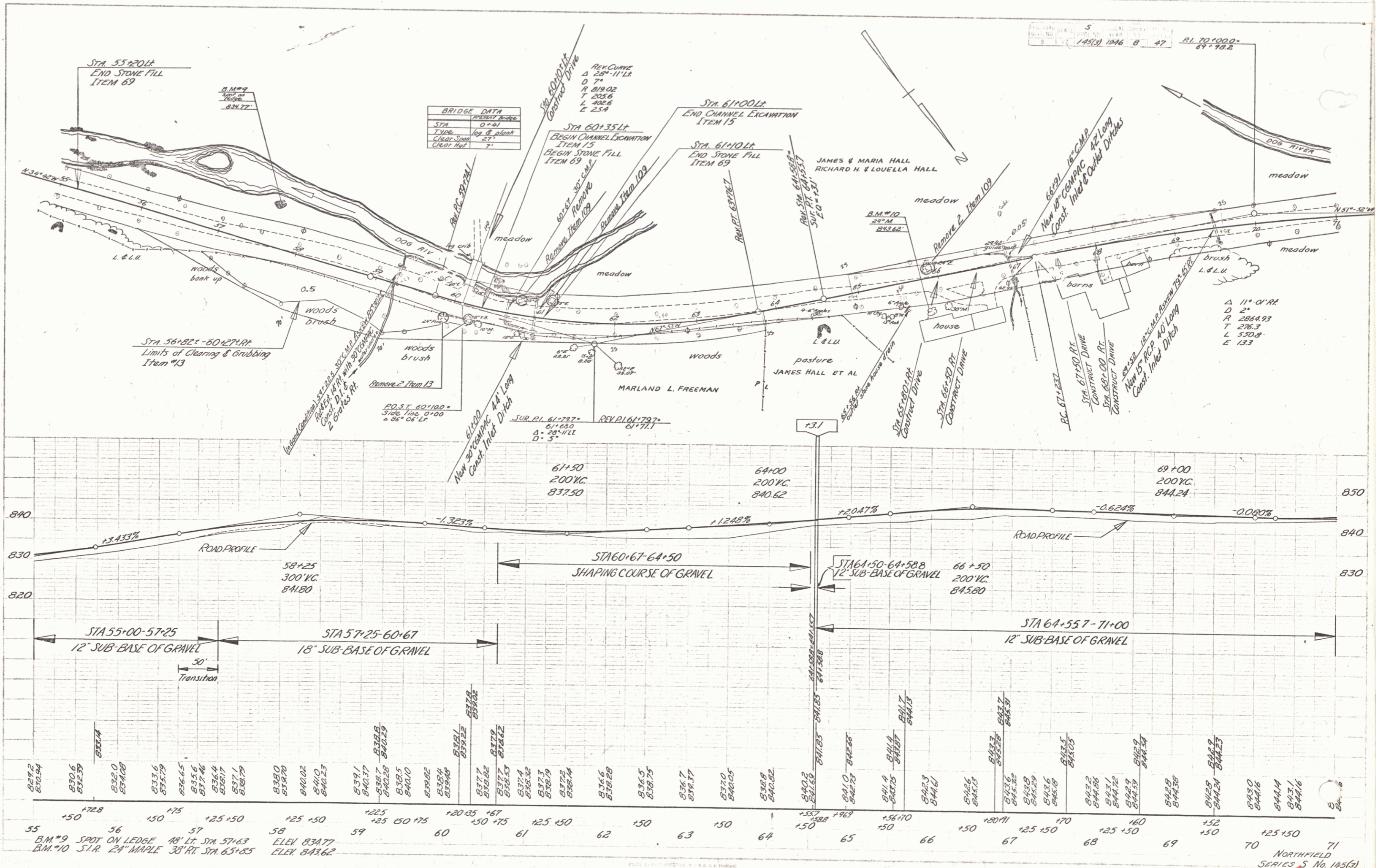


BRIDGE DATA		
Type	Present Br.	Proposed Br.
Clearance	19.2	
Clear Span	25'	
Clear Height	8'-10"	
Overall Length	33.5'	
Roadway	24'	
Waterway	220"	
Condition	Good	



PLAN
 SCALE
 1" = 40'

PROFILE
 SCALE
 1" = 10'



BRIDGE DATA

STA	0+91
TYP	log & plank
Clearance	21'
Clear. Sp.	7'

Sta 60+00 LT
 Dog River
 R.C. CURVE
 Δ 28° 11' 12"
 D 7°
 P 819.02
 T 235.6
 L 402.6
 E 25.4

Sta 61+00 LT
 END CHANNEL EXCAVATION
 ITEM 15

Sta 61+00 LT
 END STONE FILL
 ITEM 69

Sta 60+35 LT
 BEGIN CHANNEL EXCAVATION
 ITEM 15

Sta 60+35 LT
 BEGIN STONE FILL
 ITEM 69

Sta 55+20 LT
 END STONE FILL
 ITEM 69

Sta 56+25 - 60+27 RT
 Limits of Clearing & Grubbing
 Item 13

POST 60+180
 Side Line 0+00
 Δ 88° 04' 12"

SUR. PT. 61+787
 61+630
 Δ 28° 11' 12"
 D 7°

REV. PT. 61+797
 61+771

RI 70+000
 69+78.2

Δ 11° 01' 11"
 D 24
 P 2854.93
 T 278.3
 L 550.8
 E 133

