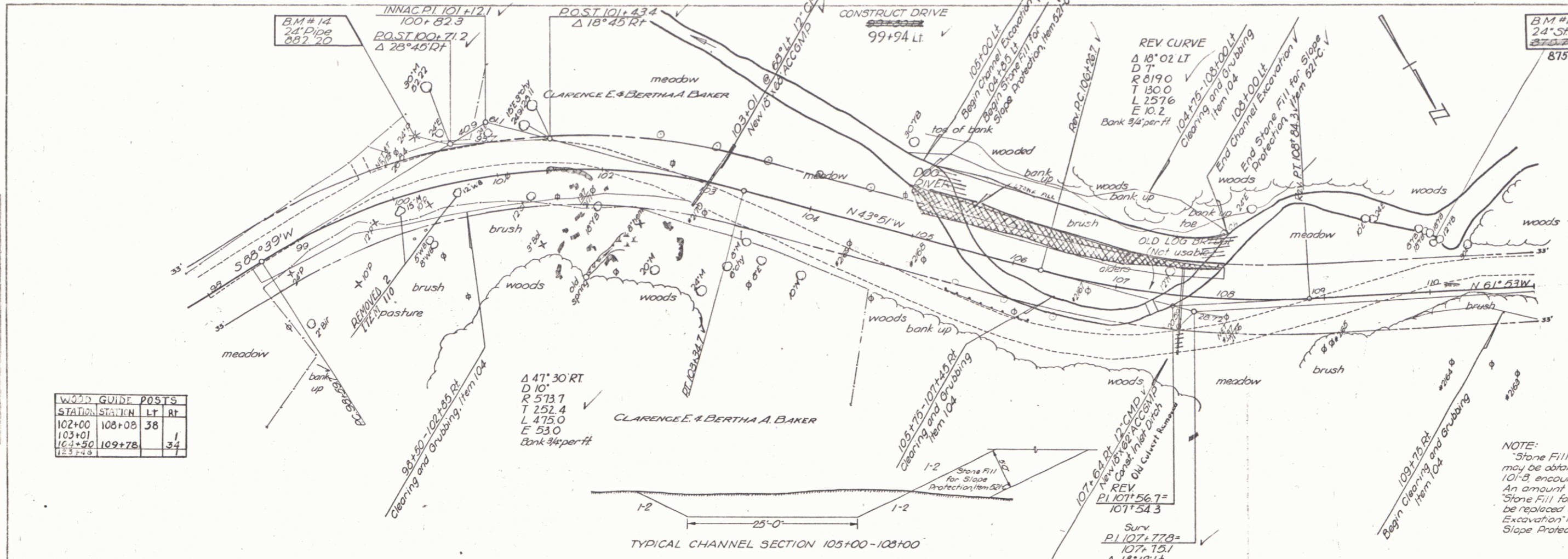
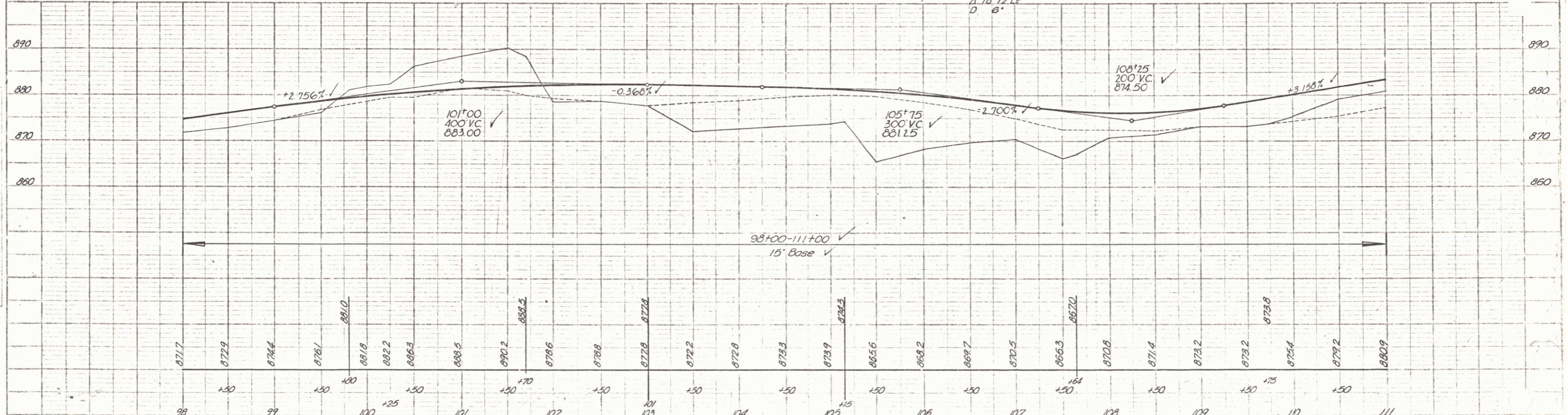


CLARENCE E. & BERTHA A. BAKER

STATION	STATION	LT	RT
102+00	108+00	38	
103+01			1
104+50	109+78	34	



NOTE:  
 "Stone Fill for Slope Protection", Item 521-C  
 may be obtained from "Solid Rock Excavation", Item  
 101-B encountered in the roadway excavation.  
 An amount of borrow equal to the volume of  
 "Stone Fill for Slope Protection", Item 521-C shall  
 be retained by the contractor whenever "Solid Rock  
 Excavation" Item 101-B is used for "Stone Fill for  
 Slope Protection", Item 521-C and not used in the fill.



BM #14 S.I.P. 24" Pine 51' Lt sta 100+37 elev 882.20  
 B.M. #15 S.I.P. 24" stump 45' Lt sta 110+05 elev 875.79

NORTHFIELD-ROXBURY S145(6)  
 sheet 10 of 61