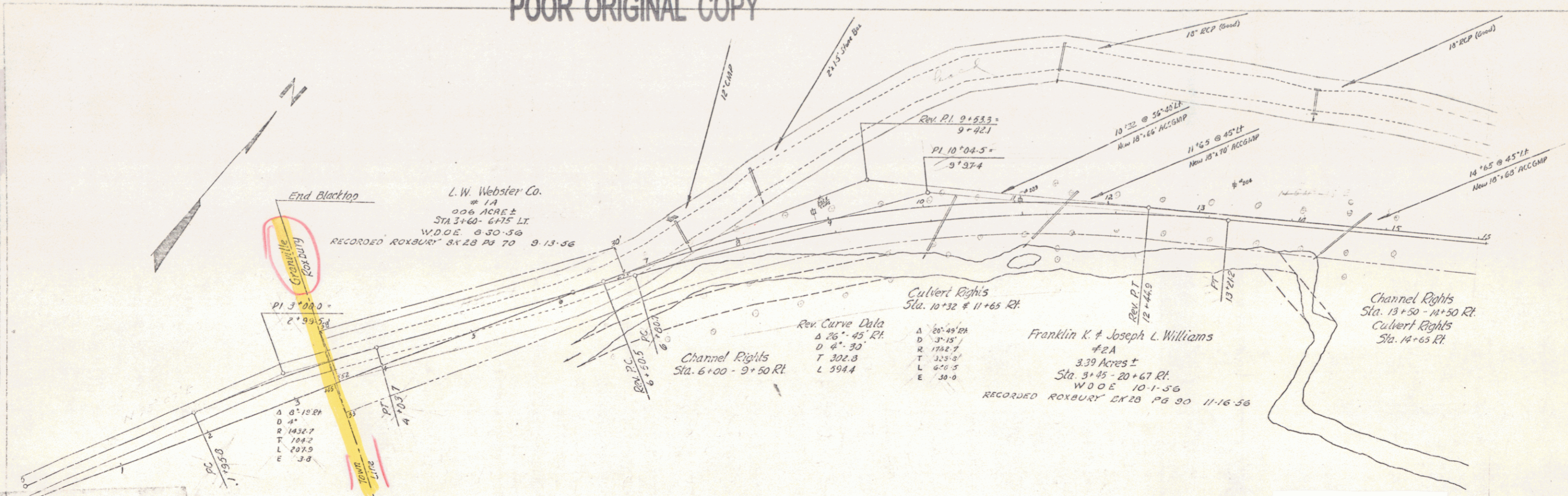


POOR ORIGINAL COPY



End Blacktop
 L.W. Webster Co.
 # 1A
 000 ACRES ±
 STA 3+40 - 6+15 LT
 W.D.O.E. 9-30-56
 RECORDED ROXBURY BK 28 PG 70 9-13-56

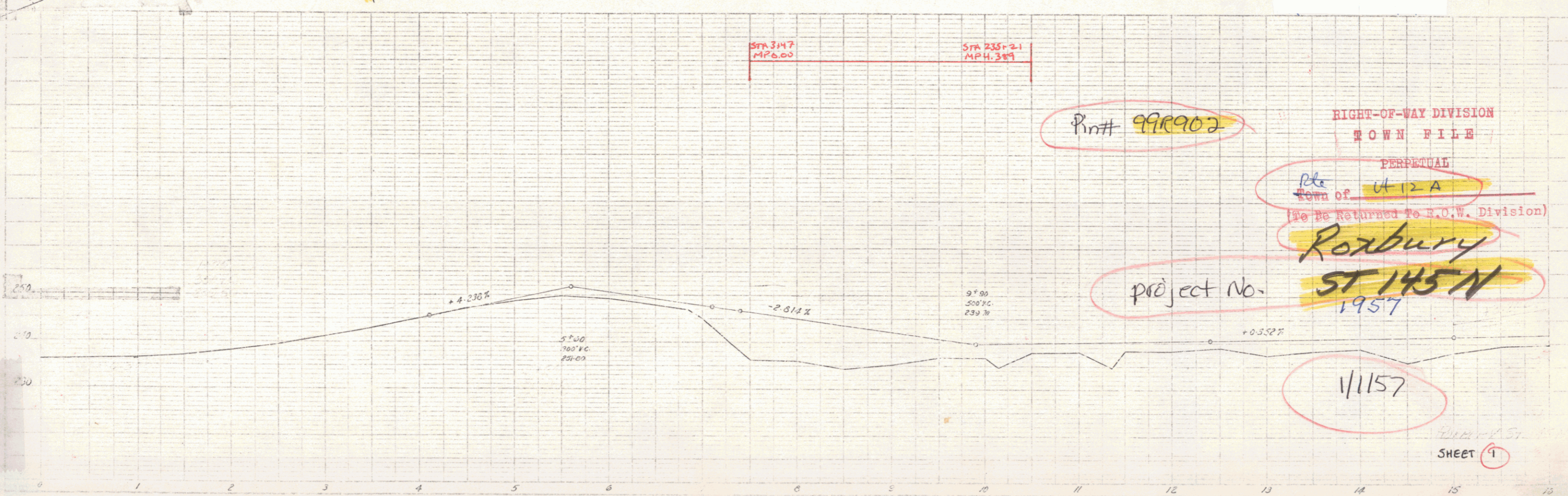
Channel Rights
 Sta. 6+00 - 9+50 Rt.

Rev. Curve Data
 Δ 26° 45' Rt.
 D 4" 30
 T 302.8
 L 594.4

Culvert Rights
 Sta. 10+32 & 11+65 Rt.

Franklin K. & Joseph L. Williams
 # 2A
 3.39 Acres ±
 Sta. 9+45 - 20+67 Rt.
 W.D.O.E. 10-1-56
 RECORDED ROXBURY BK 28 PG 90 11-16-56

Channel Rights
 Sta. 13+50 - 14+50 Rt.
 Culvert Rights
 Sta. 14+65 Rt.



Pin# 998902

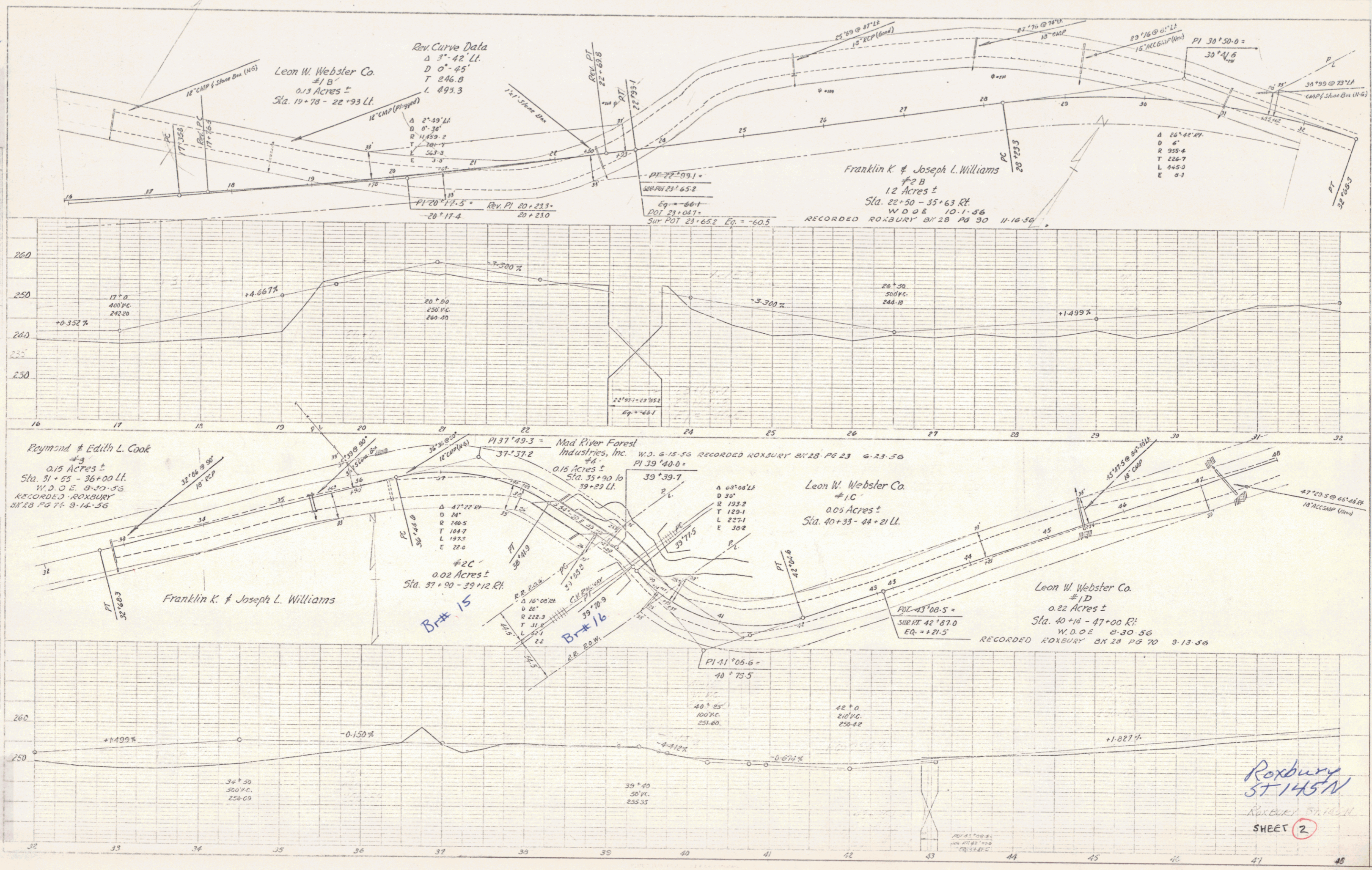
RIGHT-OF-WAY DIVISION
 TOWN FILE
 PERPETUAL
 Rte. of VT 12-A
 (To Be Returned To R.O.W. Division)

Roxbury
 project No. ST 145 N
 1957

11157

SHEET 9

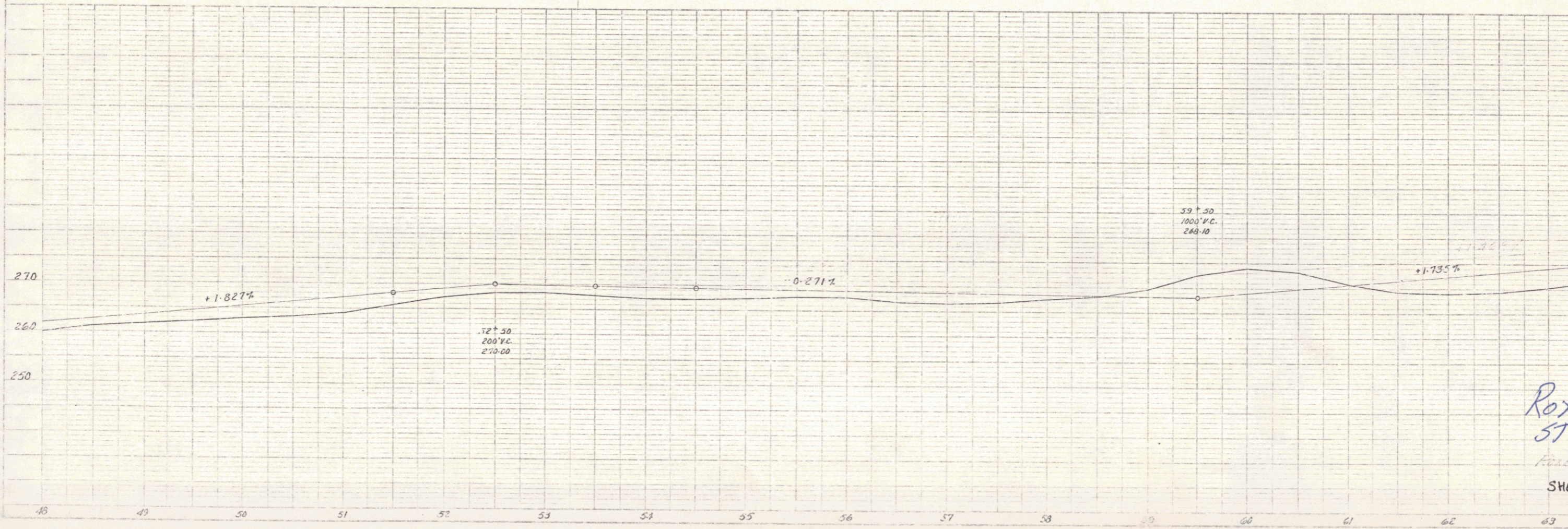
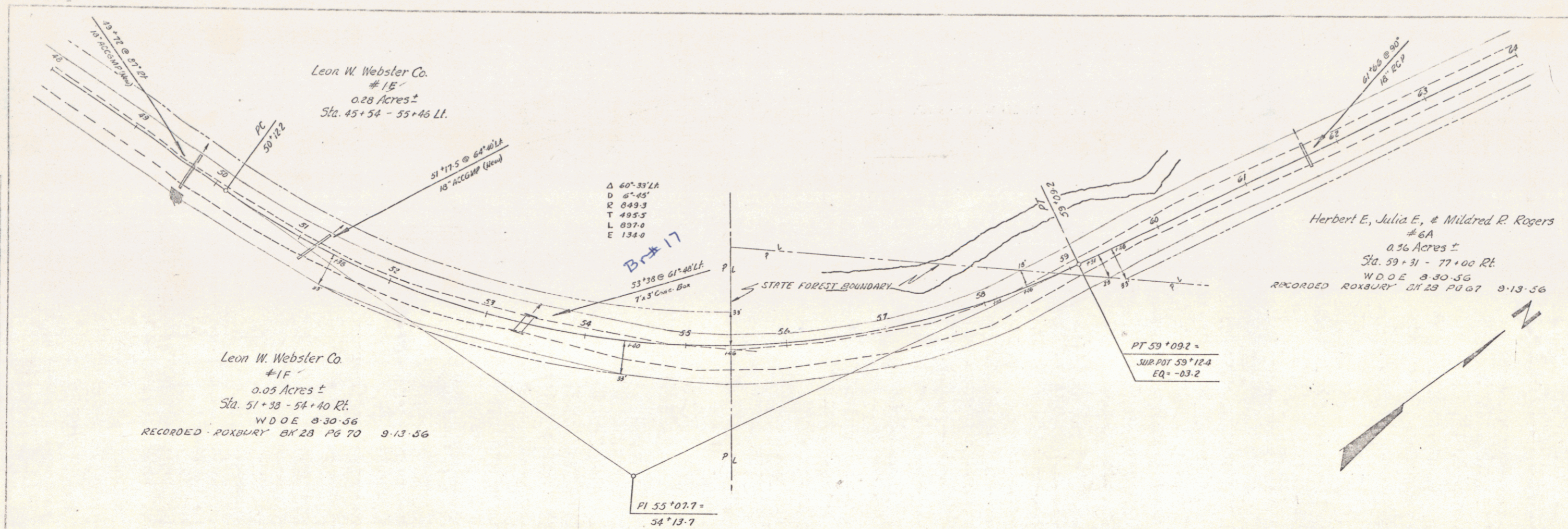
STEARNS R. JENKINS
 VT 12-A



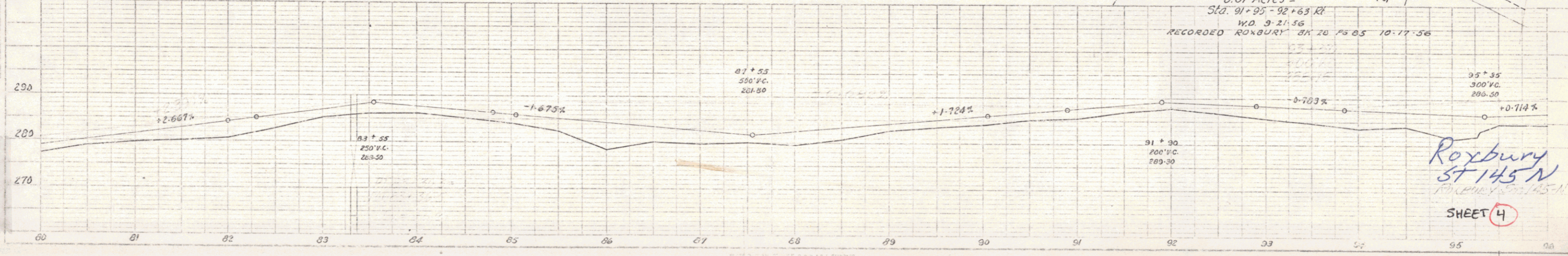
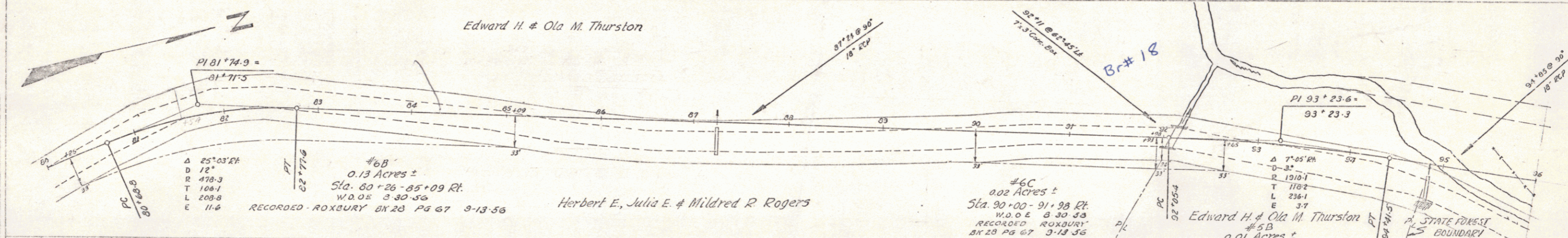
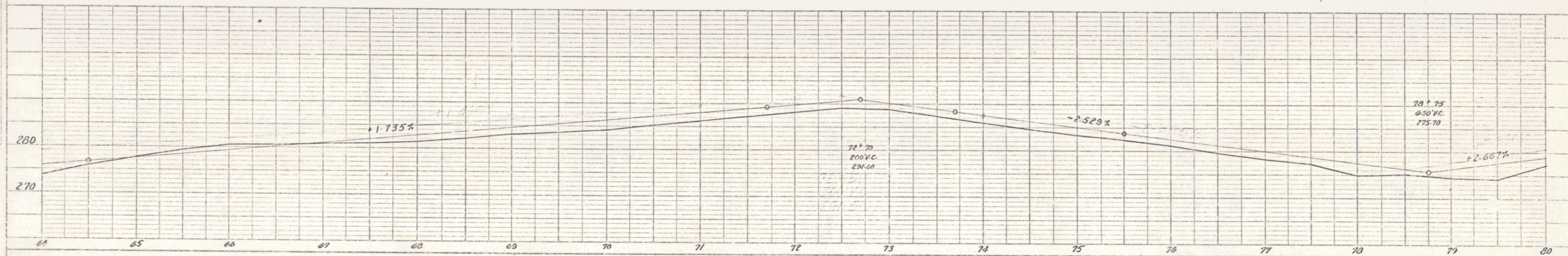
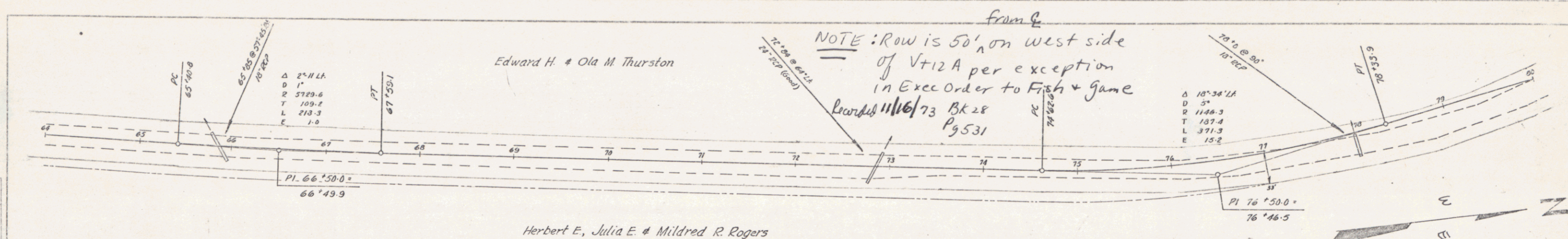
PLUM
 CIVIL ENGINEER
 STATE OF MASSACHUSETTS
 LICENSE NO. 12345
 100 STATE STREET
 BOSTON, MASS. 02109

1000
 CIVIL ENGINEER
 STATE OF MASSACHUSETTS
 LICENSE NO. 67890
 100 STATE STREET
 BOSTON, MASS. 02109

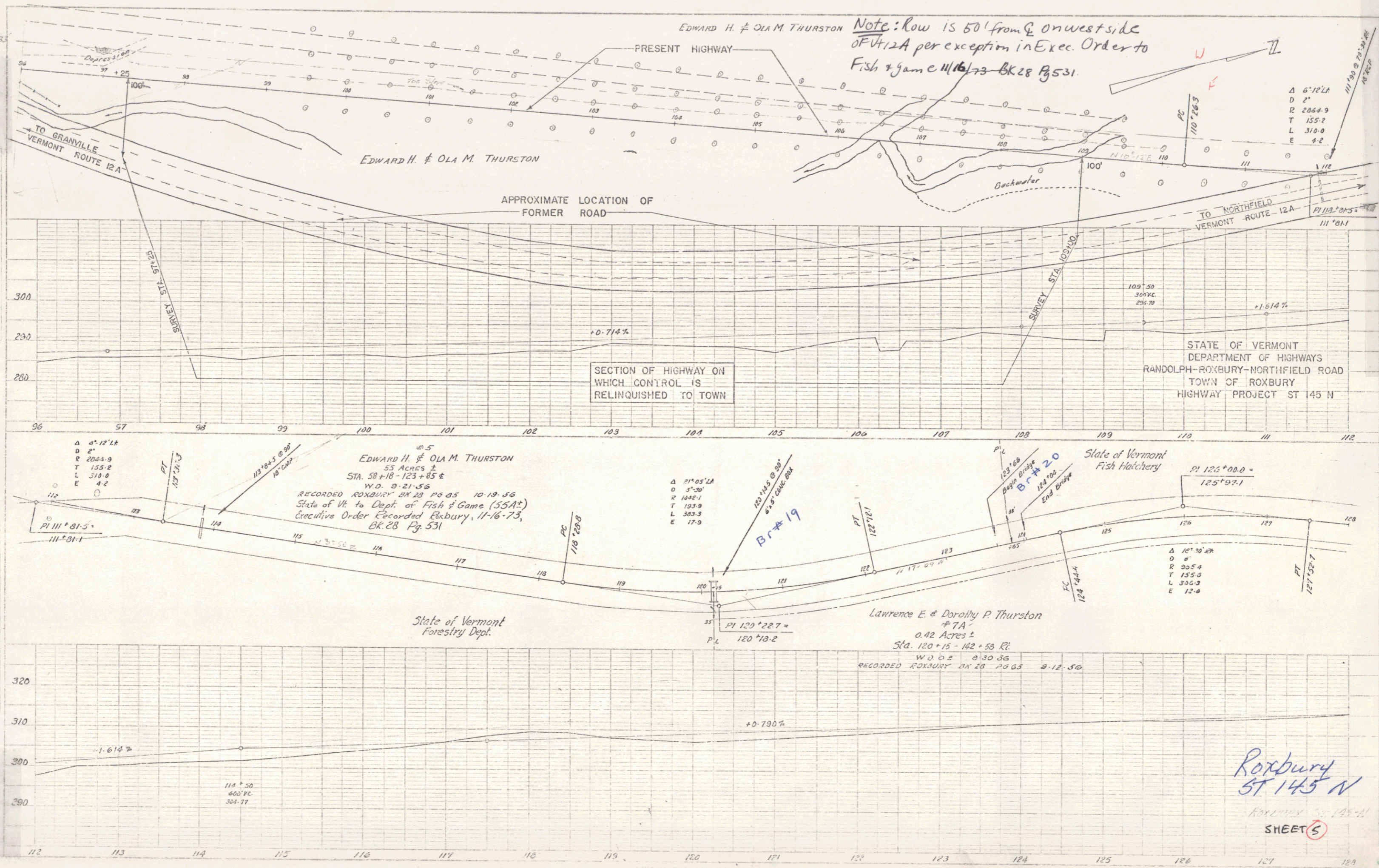
Roxbury
 ST 145N
 SHEET 2



Roxbury
 5T145N
 SHEET 3



Roxbury
ST 145 N
SHEET 4



Note: low is 50' from CL on west side of VT 12A per exception in Exec. Order to Fish & Game 11/16/73 BK 28 Pg 531.

Δ 6°12'14"
D 2'
R 2864.9
T 155.2
L 310.0
E 4.2

SECTION OF HIGHWAY ON WHICH CONTROL IS RELINQUISHED TO TOWN

STATE OF VERMONT
DEPARTMENT OF HIGHWAYS
RANDOLPH-ROXBURY-NORTHFIELD ROAD
TOWN OF ROXBURY
HIGHWAY PROJECT ST 145 N

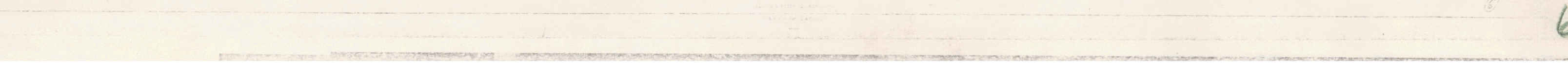
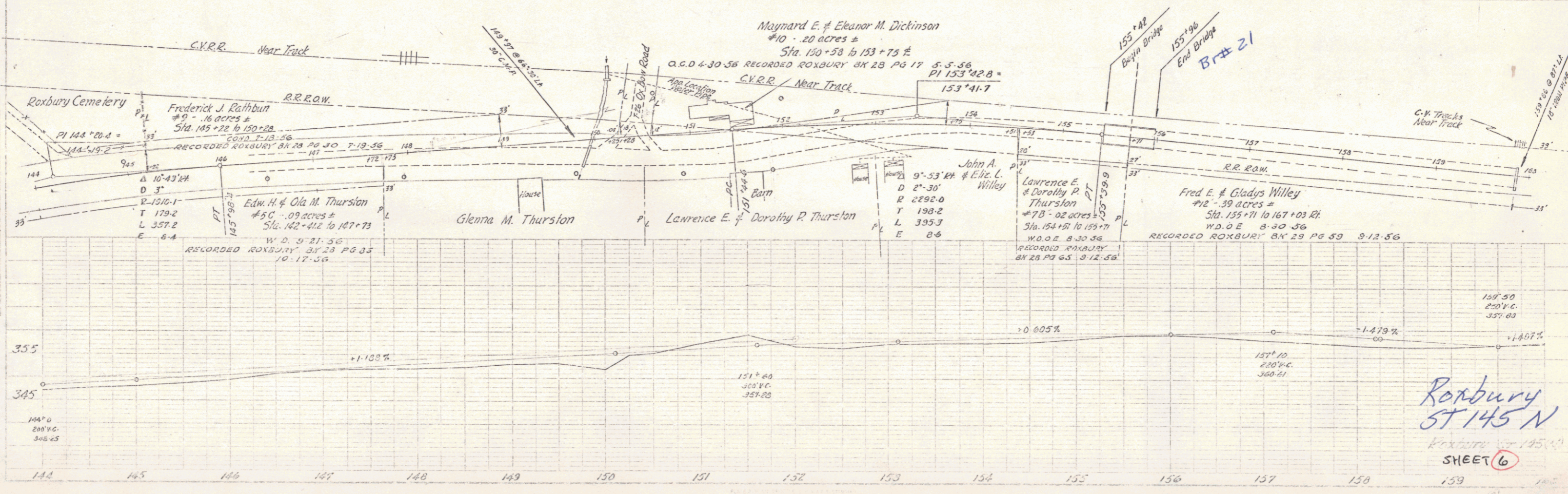
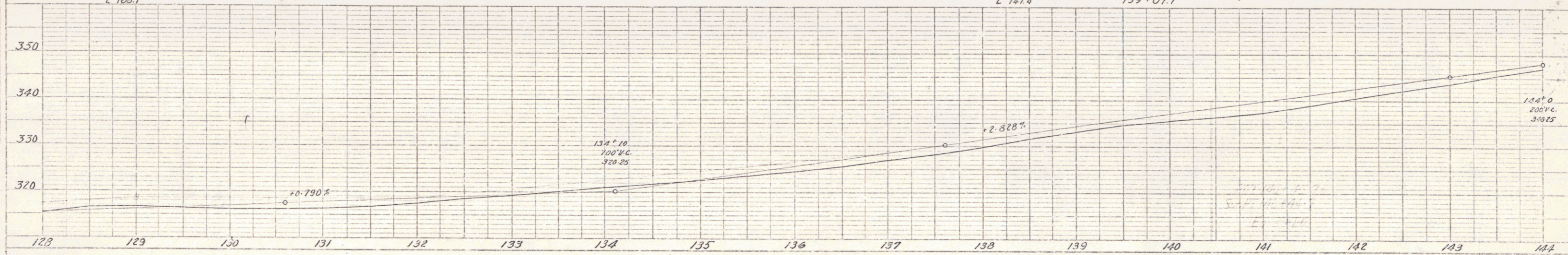
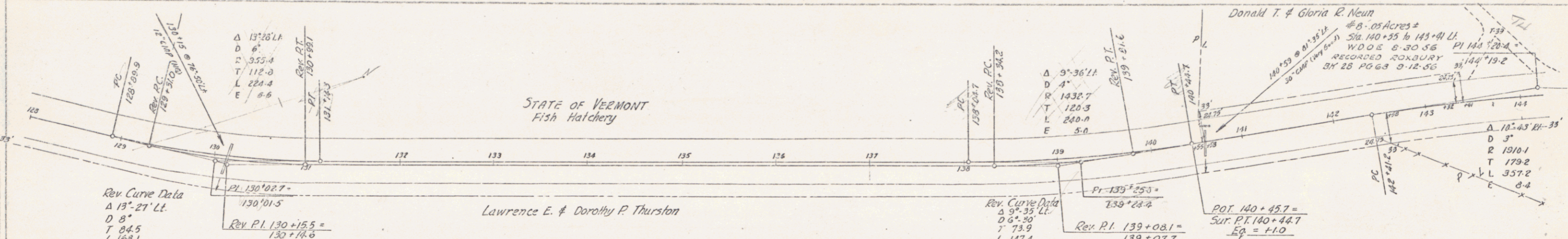
Edward H. & Ola M. Thurston
53 Acres ±
Sta. 58+18 - 123+85 ±
W.D. 9-21-56
RECORDED ROXBURY BK 29 PG 85 10-19-56
State of VT to Dept. of Fish & Game (SSA)
Executive Order Recorded Roxbury, 11-16-73,
BK 28 Pg 531

Δ 31°05'24"
D 3'30"
R 1044.1
T 193.9
L 363.3
E 17.9

Lawrence E. & Dorothy P. Thurston
#7A
0.42 Acres ±
Sta. 120+15 - 162+53 RL
W.D. 9-30-56
RECORDED ROXBURY BK 29 PG 85 9-12-56

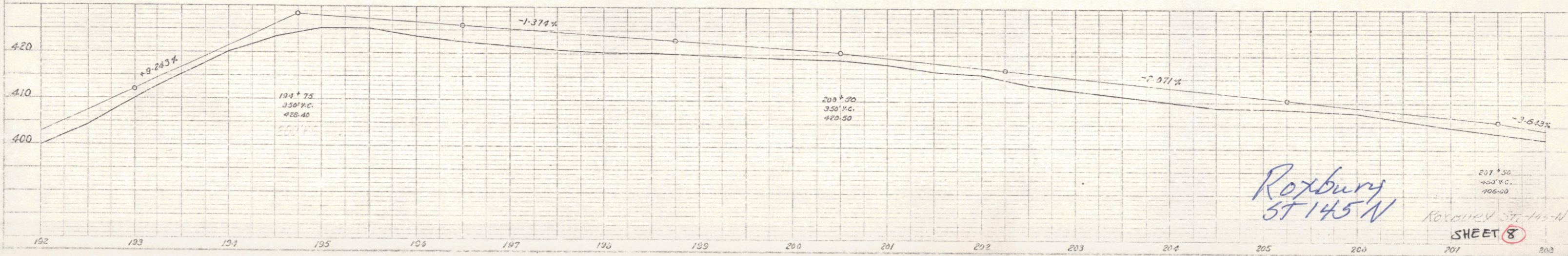
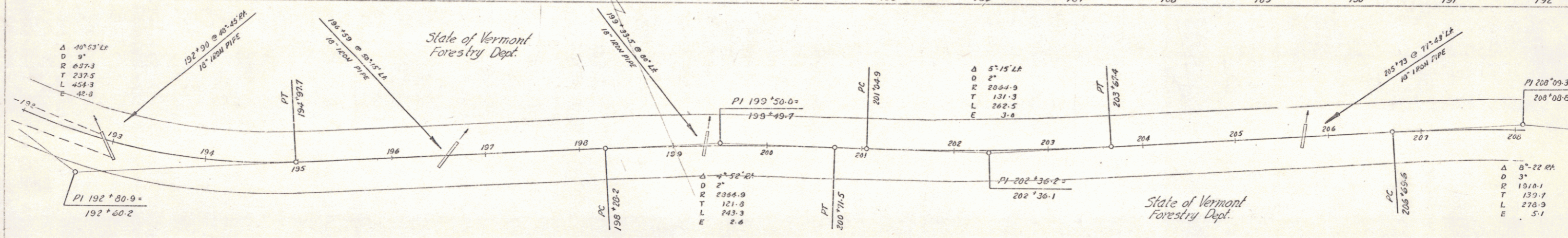
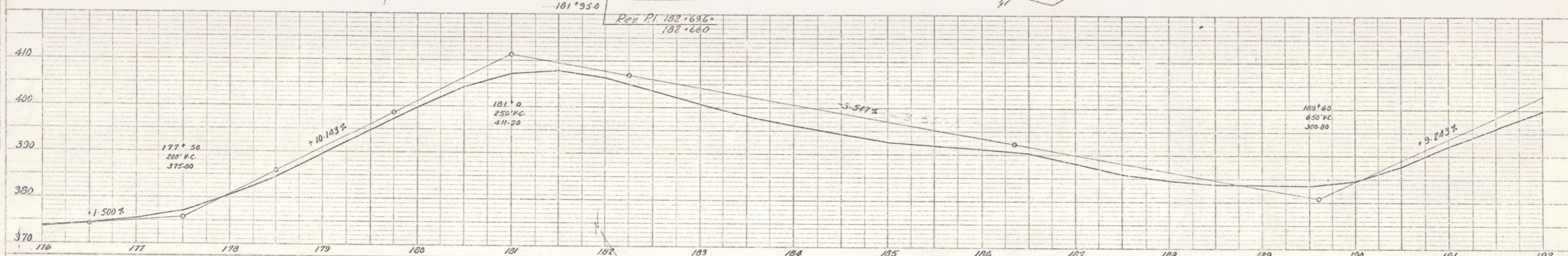
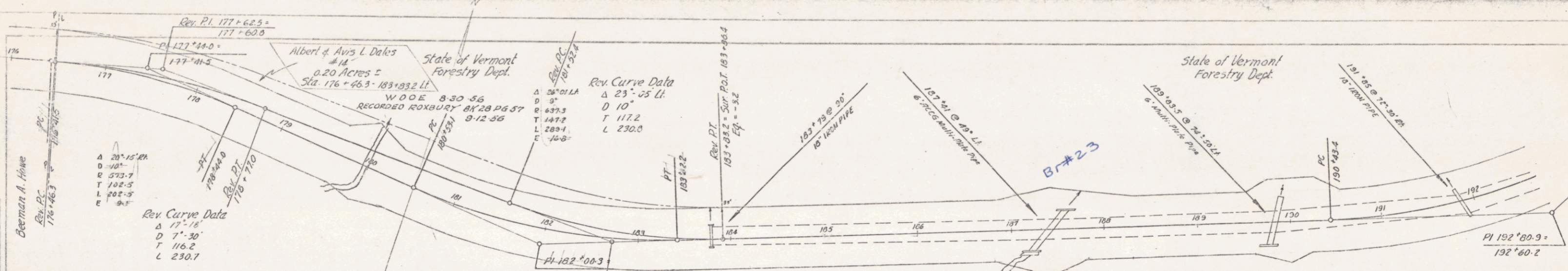
Δ 16°30'24"
D 8'
R 955.4
T 155.0
L 305.3
E 12.9

Roxbury
ST 145 N
SHEET 5

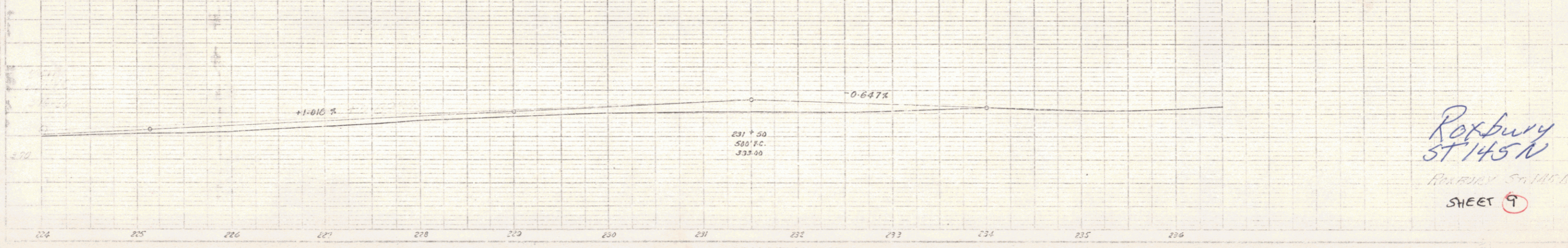
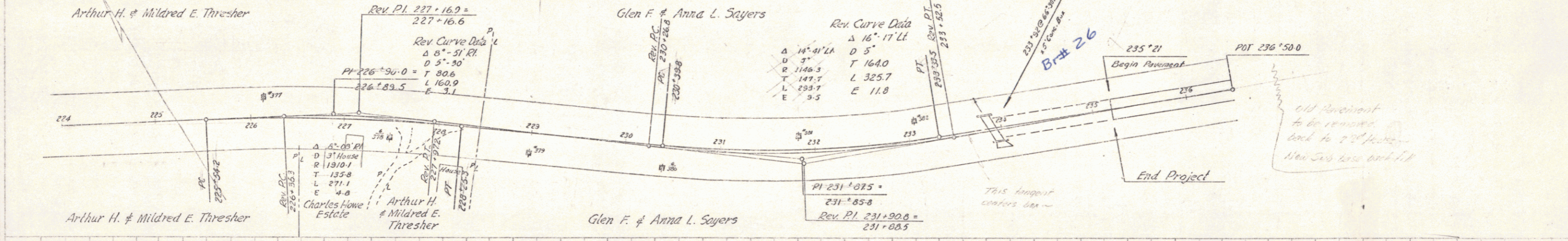
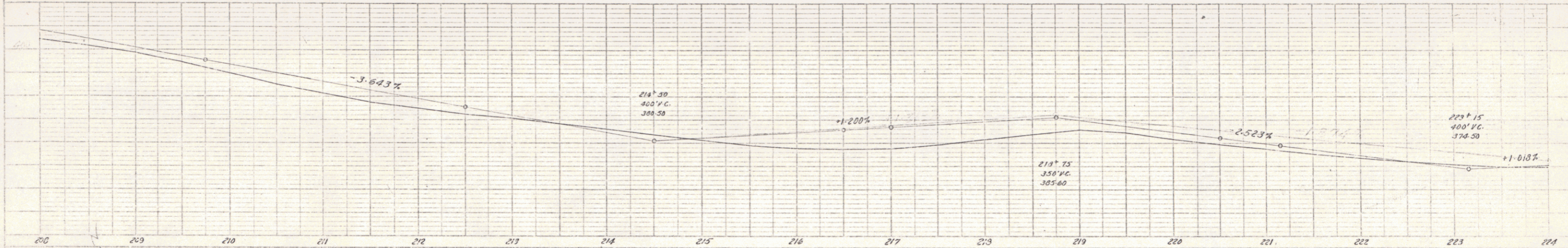
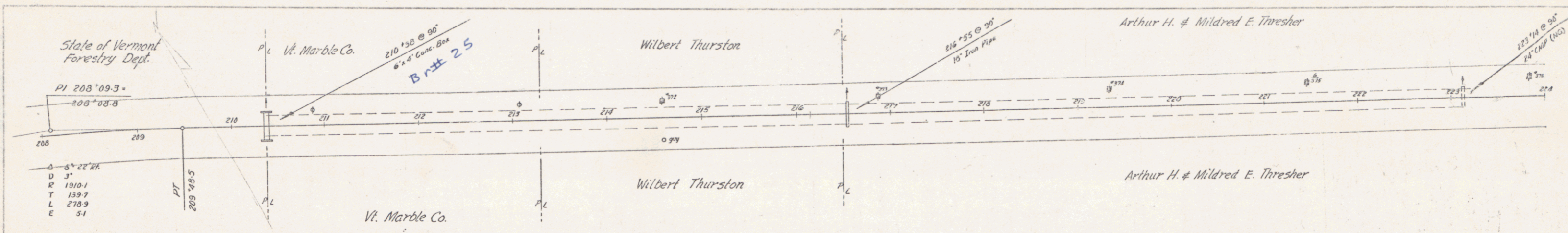


Roxbury
ST 145 N
SHEET 6

6



Roxbury
ST 145 N
SHEET 8



Old pavement to be removed back to 224' station. New S&S box and 10' pipe.

This segment conforms data.

Rotbury
5T 145 N
Roxbury Station
SHEET 9