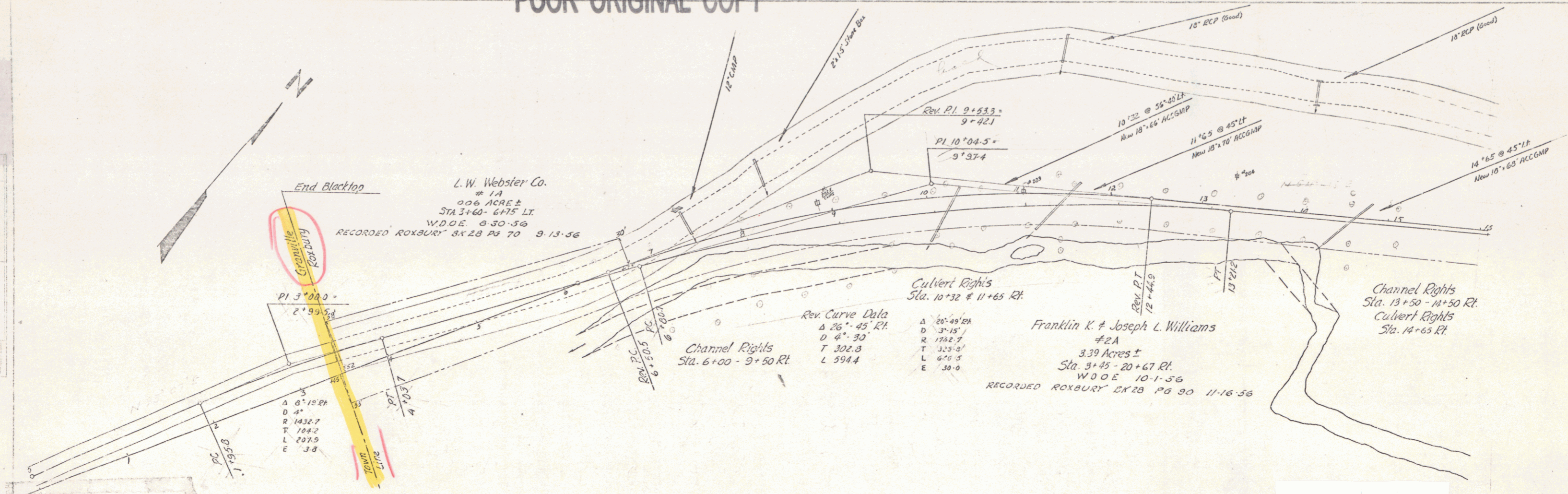


POOR ORIGINAL COPY



End Blacktop
 L.W. Webster Co.
 # 1A
 006 ACRES ±
 STA 3+40 - 6+15 LT
 W.D.E. 9-30-56
 RECORDED ROXBURY BK 28 PG 70 9-13-56

Franklin K. & Joseph L. Williams
 # 2A
 3.39 Acres ±
 Sta. 9+45 - 20+67 Rt.
 W.D.E. 10-1-56
 RECORDED ROXBURY BK 28 PG 90 11-16-56

Channel Rights
 Sta. 6+00 - 9+50 Rt.

Culvert Rights
 Sta. 10+32 & 11+65 Rt.

Channel Rights
 Sta. 13+50 - 14+50 Rt.
 Culvert Rights
 Sta. 14+65 Rt.

Rev. Curve Data
 Δ 26° - 45' Rt.
 D 4" - 30
 T 302.8
 L 594.4

PI 3+000
 2' 99.34

STA 3+147
 MPH 6.00

STA 235+21
 MPH 35.7

Pin# 998902

RIGHT-OF-WAY DIVISION
 TOWN FILE

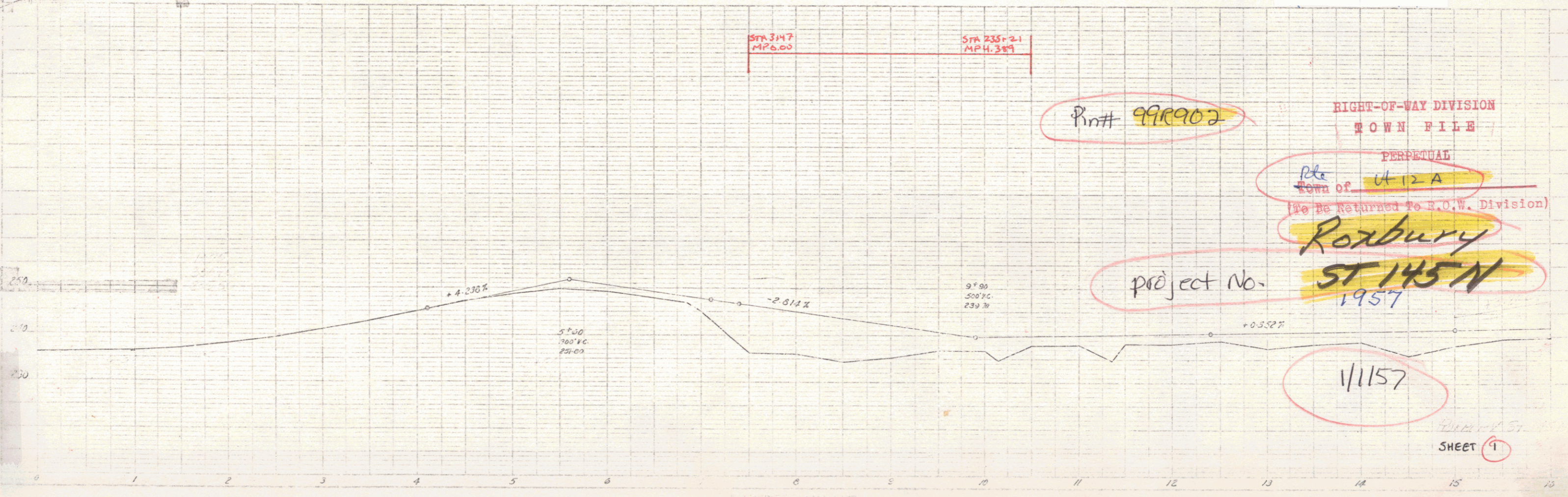
PERPETUAL
 Rte. Town of VT 12-A
 (To Be Returned To R.O.W. Division)

project No.

Roxbury
 ST 145 N
 1957

11157

SHEET 9



STEARNS R. JENKINS

VT 12-A