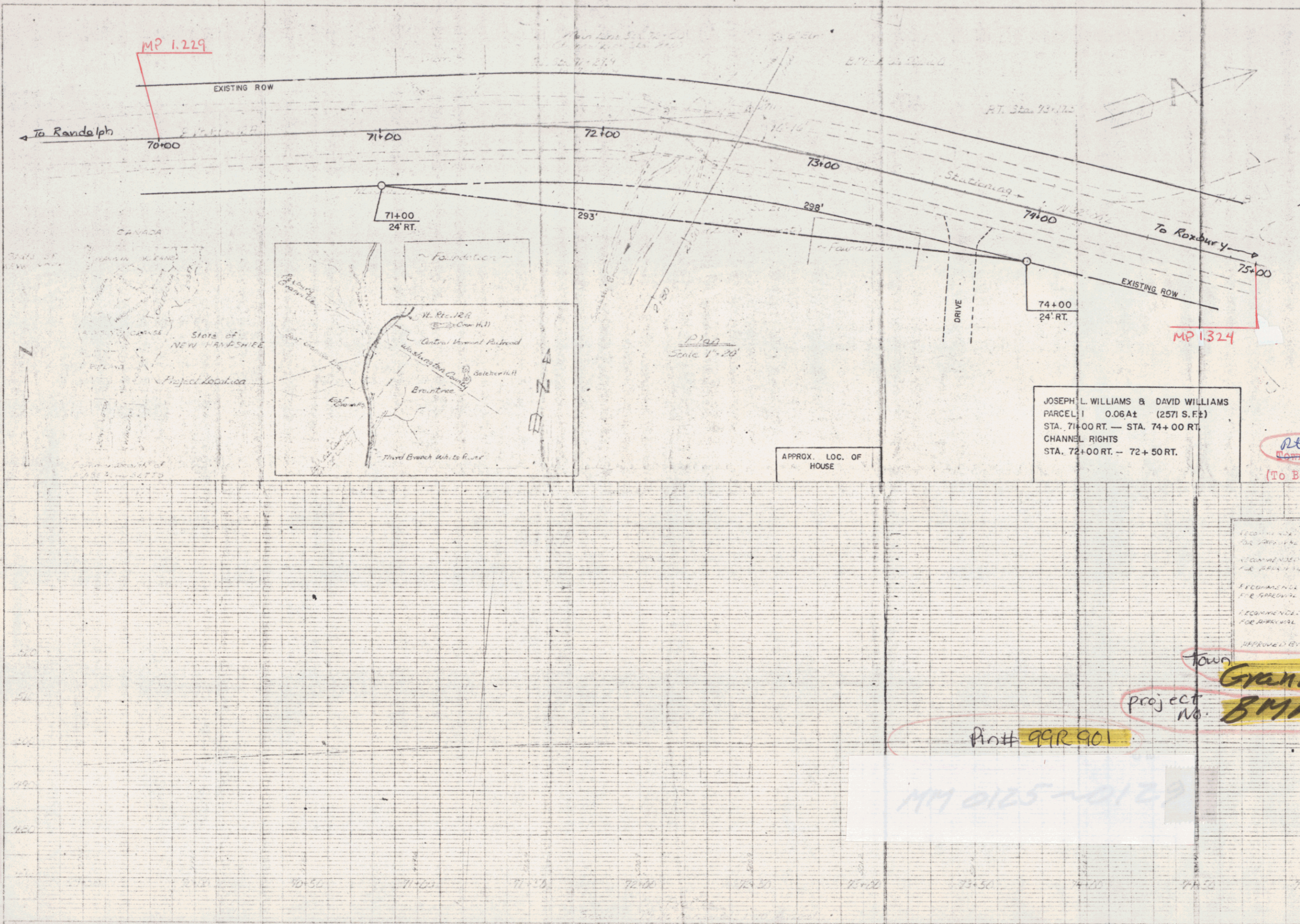


POOR ORIGINAL COPY

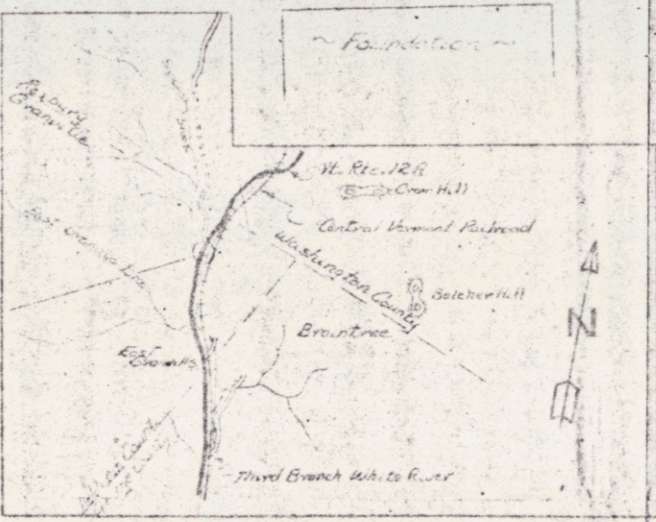


PLAN

DATE	10/1/73
BY	J. L. Williams
CHECKED BY	D. S. Williams
SCALE	1" = 20'

PROFILE

DATE	10/1/73
BY	J. L. Williams
CHECKED BY	D. S. Williams
SCALE	1" = 20'



APPROX. LOC. OF HOUSE

JOSEPH L. WILLIAMS & DAVID WILLIAMS
 PARCEL: 0.06 A^c (2571 S.F.)
 STA. 71+00 RT. — STA. 74+00 RT.
 CHANNEL RIGHTS
 STA. 72+00 RT. — 72+50 RT.

Stationing
 RT. Sta. 73+12.5
 N 32° W
 To Roxbury

Granville
 B-# 14
 RIGHT-OF-WAY DIVISION
 TOWN FILE /
 PERPETUAL
 Rte
 Corn of 412 A
 (To Be Returned To R.O.W. Division)

DESIGNED BY	J. L. Williams
RECOMMENDED FOR APPROVAL	PERPETUAL
RECOMMENDED FOR APPROVAL	CONSTRUCTION ENGINEER
RECOMMENDED FOR APPROVAL	ASSISTANT CHIEF ENGINEER
APPROVED BY	CHIEF ENGINEER

Town
Granville
 project No.
BMA 6312

Pin# 99R 901
 MM 0125-0129

STATE OF VERMONT
 Department of Highway
 Granville, BMA 6312
 Raymond Road, N. H.
 over Dorset Branch
 Bridge #14

Plan & Profile
 Design by
 J. L. Williams & D. S. Williams
 75+00
 SHEET 1

JUL 23 1974