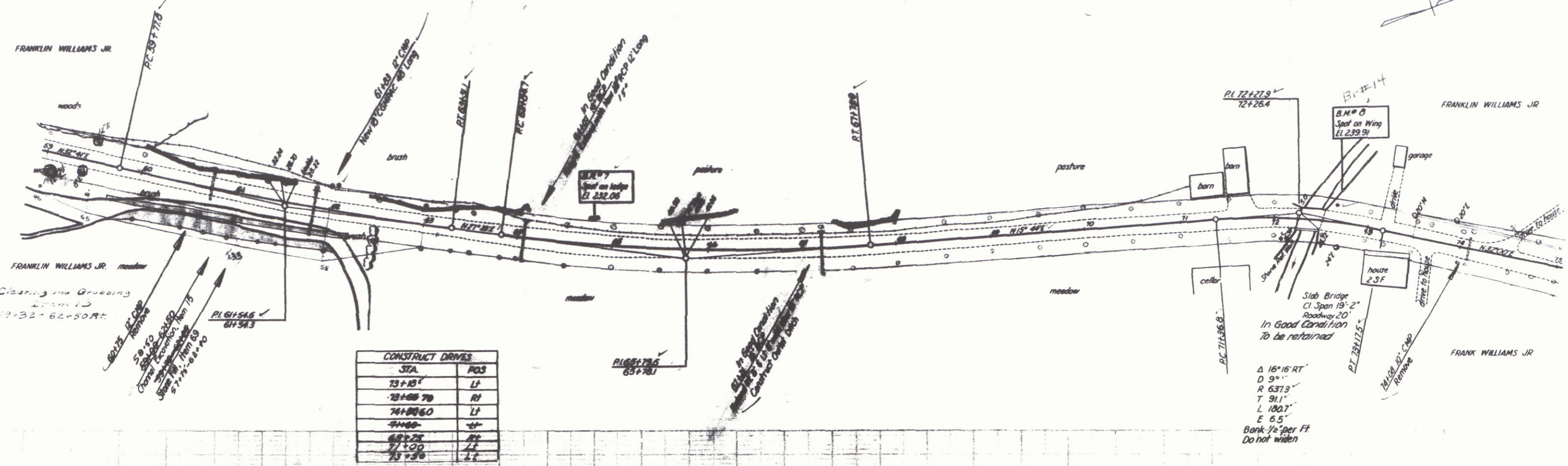


TREES
 O = Remove, then 100

Δ 5° 10' 11"
 D 1' 30"
 R 3919.6
 T 198.0
 L 388.3
 E 41'
 Bank 1/2" per FT

Δ 11° 39' 11"
 D 3'
 R 1040.1
 T 194.9
 L 388.3
 E 10.0
 Bank 1/2" per FT



CONSTRUCT DRIVES	
STA	POS
73+10	LF
73+40	RT
74+00	LF
74+60	RT
68+25	RT
71+00	LF
73+30	LF

