

- 2 TYPICAL CROSS-SECTION OF IMPROVEMENT (USABLE THAT PART OF IMPROVEMENT WITH 4% SIDE SLOPE, 10% GRADE)
- 3 BANKING AND WEEDING TABLES
- 4 PLAN AND PROFILE
- 11 STANDARD STRUCTURE SHEET S-28 PIPE CULVERTS
- 12 " " " " S-29 WOOD GUARD RAIL
- 13 " " " " S-30A STATE OR FEDERAL AD MARKERS
- 14 " " " " S-30B SUPERROADS, SIGNS & LIGHTS
- 15 " " " " S-31 TYPICAL GRADINGS
- 16-33 CROSS SECTIONS

STANDARD STRUCTURE SHEETS APPROVED BY THE CHIEF ENGINEER, VERMONT STATE DEPT. OF HIGHWAYS

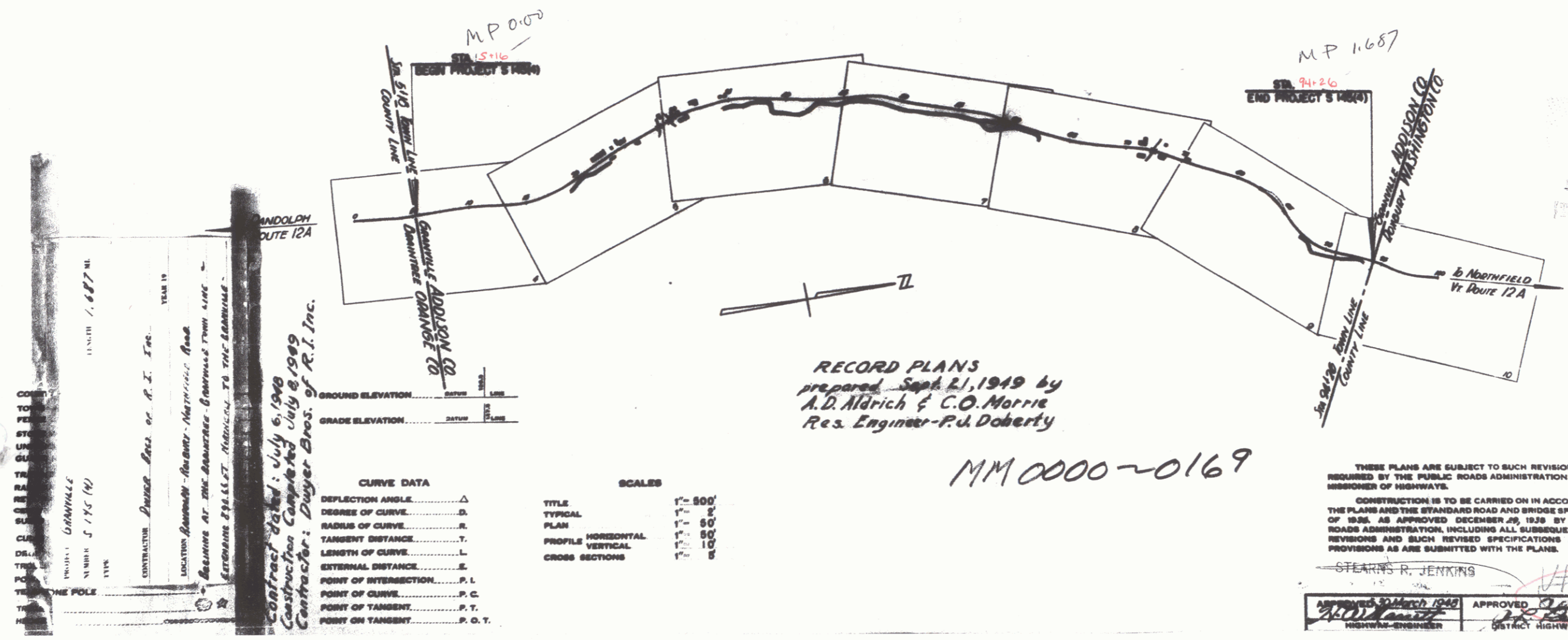
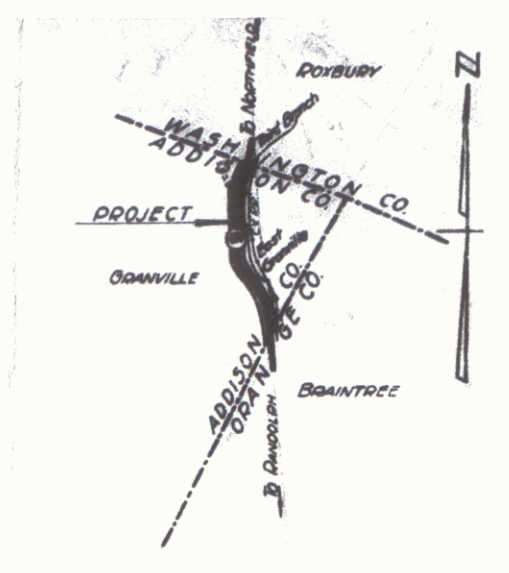
- S-28 APR. 25, 1941
- S-30 NOV. 10, 1947
- S-30A APR. 19, 1941
- S-40 DEC. 18, 1945

STATE OF VERMONT
STATE HIGHWAY DEPARTMENT

PLAN AND PROFILE OF PROPOSED
STATE HIGHWAY
SECONDARY PROJECT

TOWN OF GRANVILLE Pin # 992900
VERMONT ROUTE 12A

RANDOLPH-ROXBURY-NORTHFIELD ROAD
BEGINNING AT THE BRAINTREE-GRANVILLE TOWN
LINE AND EXTENDING 8906.6 FEET NORTHERLY
TO THE GRANVILLE-ROXBURY LINE
LENGTH OF PROJECT 8906.6 FEET=1.687 MILES



APPROVED: 30 March 1948
H.E. Sargent
COMMISSIONER OF HIGHWAYS
SUBMITTED BY ORDER OF THE STATE HIGHWAY BOARD

Project No. S 145(4)

THESE PLANS ARE SUBJECT TO SUCH REVISIONS AS MAY BE REQUIRED BY THE PUBLIC ROADS ADMINISTRATION OR THE COMMISSIONER OF HIGHWAYS.

CONSTRUCTION IS TO BE CARRIED ON IN ACCORDANCE WITH THE PLANS AND THE STANDARD ROAD AND BRIDGE SPECIFICATIONS OF 1938, AS APPROVED DECEMBER 29, 1938 BY THE PUBLIC ROADS ADMINISTRATION, INCLUDING ALL SUBSEQUENT APPROVED REVISIONS AND SUCH REVISED SPECIFICATIONS AND SPECIAL PROVISIONS AS ARE SUBMITTED WITH THE PLANS.

APPROVED: 30 March 1948
Stearns R. Jenkins
DISTRICT HIGHWAY ENGINEER

APPROVED: 30 March 1948
H.E. Sargent
DISTRICT HIGHWAY COMMISSIONER

SERIES 5 No. 145(4) FILED
SHEET 1 OF 33