

FED. ROAD DIST. NO.	STATE	FED. AID PROJ. NO.	FISCAL YEAR	SHEET NO.	TOTAL SHEETS
9	Vt.		1926	1	27

INDEX OF SHEETS

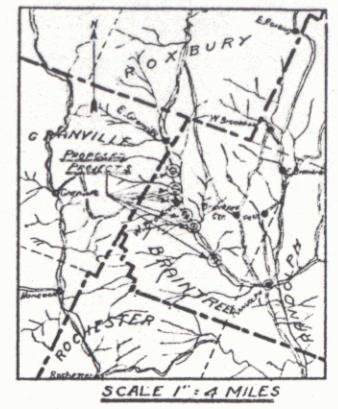
SHEET NO. 1	TITLE PAGE
" 2	TYPICAL CROSS-SECTION OF IMPROVEMENT (24' GRAVEL)
" 3	PLAN AND PROFILE FOR BRIDGE NO. 40
" 4	SL.B. 20'-C.R.-16' SQUARE (GRAVEL)
" 5	SL.A.G. 12' SQUARE 30 WINGS
" 6	PLAN AND PROFILE FOR BRIDGE NO. 41-A
" 7	SL.B. 20'-50' 30 SKEW (2 SPANS)
" 8	S.A.G. 8' 30 SKEW
" 9	S.P. 1 PIER DETAILS
" 10	S.P. 2 " "
" 11	PLAN AND PROFILE FOR BRIDGE NO. 41
" 12	SL.B. 20'-C.R.-20' SQUARE (GRAVEL)
" 13	SL.A.G. 8' SQUARE 30 WINGS
" 14	PLAN AND PROFILE FOR BRIDGE NO. 42
" 15	SL.B. 20'-C.R.-20' SPAN 30 SKEW (GRAVEL)
" 16	SL.A.G. 8' 30 SKEW 30 WINGS
" 17	PLAN AND PROFILE FOR BRIDGE NO. 43
" 18	SL.B. 20'-C.R.-20' SPAN SQUARE (GRAVEL)
" 19	SL.A.G. 6' SQUARE 30 WINGS
" 20	PLAN AND PROFILE FOR FORD BRIDGE
" 21	S.B. 12'-80' STEEL SUPERSTRUCTURE
" 22	DETAILS ABUTMENT NO. 1
" 23	" " " 2
" 24	S.B. 1 TYPICAL DETAILS FOR STEEL BRIDGES
" 25	S.B. 2 TYPICAL DETAILS
" 26	S.B. 3 SKEW ENDS
" 27	S.B. 5 STANDARD CABLE RAIL AND CURB

STATE OF VERMONT
STATE HIGHWAY DEPARTMENT

PLAN AND PROFILE OF PROPOSED
STATE HIGHWAY

FEDERAL AID PROJECT
TOWN OF BRAINTREE

RANDOLPH-ROXBURY ROAD



BRIDGE NO. 40 OVER TILLSON BROOK 30 MILES NORTH OF RANDOLPH VILLAGE
 LENGTH 18.5 FEET=0.003 MILES
Replaced by 12'x6' CGMPPA as ST-145M 1957

BRIDGE NO. 41A OVER THIRD BRANCH OF WHITE RIVER 0.5 MILES SOUTH OF BRAINTREE DEPOT
 LENGTH 108.0 FEET=0.020 MILES

BRIDGE NO. 41 OVER ^{Dunham Brook} CAMPBELL BROOK AT BRAINTREE DEPOT
 LENGTH 22.5 FEET=0.004 MILES

BRIDGE NO. 42 OVER BATCHELLOR BROOK 0.5 MILES NORTH OF BRAINTREE DEPOT
 LENGTH 22.5 FEET=0.004 MILES

BRIDGE NO. 43 OVER BRACKETT BROOK 0.8 MILES NORTH OF BRAINTREE DEPOT
 LENGTH 22.5 FEET=0.004 MILES

RIFFORD BROOK ROAD

FORD BRIDGE OVER THIRD BRANCH OF WHITE RIVER AT MOUTH OF RIFFORD BROOK
 LENGTH 80.0 FEET=0.015 MILES

RIGHT-OF-WAY DIVISION
TOWN FILE

Pin # **99R896**

Project **ST 145(M)**

Date **3/2/1956**

APPROVED: MAY 31, 1926
W.E. Saugnet,
 CHIEF ENGINEER

SUBMITTED BY ORDER OF THE STATE HIGHWAY

S. B. Bell
 COMMISSIONER OF HIGHWAYS

CONVENTIONAL SIGNS

COUNTY LINE	GROUND ELEVATION..... DATUM
TOWN LINE	GRADE ELEVATION..... DATUM
FENCE LINE		
STONE WALL		
UNFENCED PROPERTY		
GUARD RAIL		
TRAVELED WAY		
RAILROAD		
RETAINING WALL		
CENTER LINE		
SURVEY LINE		
CULVERT		
DROP INLET		
TROLLEY POLE		
POWER POLE		
TELEPHONE POLE		
TREES		
HEDGE		

CURVE DATA

DEFLECTION ANGLE.....	Δ
DEGREE OF CURVE.....	D
RADIUS OF CURVE.....	R
TANGENT DISTANCE.....	T
LENGTH OF CURVE.....	L
EXTERNAL DISTANCE.....	E
POINT OF INTERSECTION.....	P. I.
POINT OF CURVE.....	P. C.
POINT OF TANGENT.....	P. T.
POINT ON TANGENT.....	P. O. T.

SCALES
 PLAN 1" = 20 FEET
 PROFILE VERT. 1" = 20 FEET
 HORIZ. 1" = 20 FEET
 SECTIONS 1" = 5 FEET

LAYOUT
 SEE SHEET 3

THIS PROJECT TO BE CONSTRUCTED IN ACCORDANCE WITH STANDARD SPECIFICATIONS ON FILE WITH THE U.S. BUREAU OF PUBLIC ROADS.

STRUCTURES ON THIS PROJECT TO BE CONSTRUCTED IN ACCORDANCE WITH DETAILS GIVEN ON STANDARD STRUCTURE SHEETS SERIES NOS. S17-18-19.

DISTRICT NO. 7
 BRIDGE NOS.
 BRAINTREE

MM 0181
BRIDGE 3
 Replaced w/ 12'x6' CGMPPA
 as ST 145M 1957

RECOMMENDED
 DISTRICT ENGINEER BUREAU OF PUBLIC

RECOMMENDED FOR APPROVAL
 CHIEF ENGINEER BUREAU OF PUBLIC

APPROVED
 DIRECTOR - BUREAU OF PUBLIC

SERIES F. NO. FILED
 SHEET 1 OF 27

INDEX OF SHEETS

SHEET NO. 1	TITLE PAGE
" 2	TYPICAL CROSS-SECTION OF IMPROVEMENT (24' GRAVEL)
" 3	PLAN AND PROFILE FOR BRIDGE NO. 40
" 4	SL.B. 20'-C.R.-16' SQUARE (GRAVEL)
" 5	SL.A.G. 12' SQUARE 30 WINGS
" 6	PLAN AND PROFILE FOR BRIDGE NO. 41-A
" 7	S.T.B. 20'-50' 30 SKEW (2 SPANS)
" 8	S.A.G. 8' 30 SKEW
" 9	S.P. 1 PIER DETAILS
" 10	S.P. 2 " "
" 11	PLAN AND PROFILE FOR BRIDGE NO. 41
" 12	SL.B. 20'-C.R.-20' SQUARE (GRAVEL)
" 13	SL.A.G. 8' SQUARE 30 WINGS
" 14	PLAN AND PROFILE FOR BRIDGE NO. 42
" 15	SL.B. 20'-C.R.-20' SPAN 30 SKEW (GRAVEL)
" 16	SL.A.G. 8' 30 SKEW 30 WINGS
" 17	PLAN AND PROFILE FOR BRIDGE NO. 43
" 18	SL.B. 20'-C.R.-20' SPAN SQUARE (GRAVEL)
" 19	SL.A.G. 6' SQUARE 30 WINGS
" 20	PLAN AND PROFILE FOR FORD BRIDGE
" 21	S.B. 12'-80' STEEL SUPERSTRUCTURE
" 22	DETAILS ABUTMENT NO. 1
" 23	" " 2
" 24	S.B. 1 TYPICAL DETAILS FOR STEEL BRIDGES
" 25	S.B. 2 TYPICAL DETAILS
" 26	S.B. 3 SKEW ENDS
" 27	S.B. 5 STANDARD CABLE RAIL AND CURB

STATE OF VERMONT
STATE HIGHWAY DEPARTMENT

PLAN AND PROFILE OF PROPOSED
STATE HIGHWAY
FEDERAL AID PROJECT
TOWN OF BRAINTREE

RANDOLPH-ROXBURY ROAD

BRIDGE NO. 40 OVER TILLSON BROOK 30 MILES NORTH OF RANDOLPH VILLAGE
LENGTH 18.5 FEET=0.003 MILES *Replaced by 12'x6' CGMPPA as St-145M 1957*

BRIDGE NO. 41A OVER THIRD BRANCH OF WHITE RIVER 0.5 MILES SOUTH OF BRAINTREE DEPOT
LENGTH 108.0 FEET=0.020 MILES *Vt #12A, B3 over 3rd Branch White River*

BRIDGE NO. 41 OVER ^{Dunham Brook} CAMPBELL BROOK AT BRAINTREE DEPOT
LENGTH 22.5 FEET=0.004 MILES *Vt #12A, B9 over Dunham Brook Widened 1957 as ST 145M*

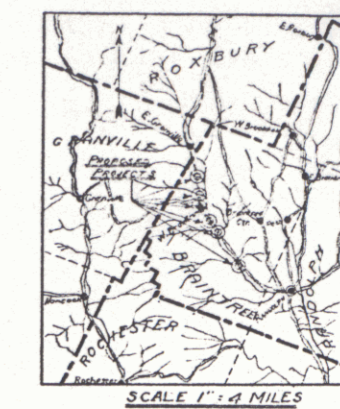
BRIDGE NO. 4.2 OVER BATCHELLOR BROOK 0.5 MILES NORTH OF BRAINTREE DEPOT
LENGTH 22.5 FEET=0.004 MILES *Vt #12A, B8 over Batchellor Brook Widened 1957 as ST 145M Should be B9 RM*

BRIDGE NO. 43 OVER BRACKETT BROOK 0.8 MILES NORTH OF BRAINTREE DEPOT
LENGTH 22.5 FEET=0.004 MILES *Vt #12A, B11 over Brackett Brook Widened 1957 as ST 145M*

RIFFORD BROOK ROAD

FORD BRIDGE OVER THIRD BRANCH OF WHITE RIVER AT MOUTH OF RIFFORD BROOK
LENGTH 80.0 FEET=0.015 MILES *Vt #46, P11 over 3rd Branch White River*

FED. ROAD DIST. NO.	STATE	FED. AID PROJ. NO.	FISCAL YEAR	SHEET NO.	TOT. SHEETS
9	Vt.	7-40	1928	1	2



RIGHT-OF-WAY DIVISION
TOWN FILE 1

Route of **UT 12 A**

APPROVED: MAY 31, 1928
H.E. Laurent
CHIEF ENGINEER
SUBMITTED BY ORDER OF THE STATE HIGHWAY
S. B. Bates
COMMISSIONER OF P.

DISTRICT NO. 7
BRIDGE NOS.
BRAINTREE

Project 7-40
Bridge 8
MM 041

CONVENTIONAL SIGNS	
COUNTY LINE	GROUND ELEVATION
TOWN LINE	GRADE ELEVATION
FENCE LINE	
STONE WALL	
UNFENCED PROPERTY	
GUARD RAIL	
TRAVELED WAY	
RAILROAD	
RETAINING WALL	
CENTER LINE	
SURVEY LINE	
CULVERT	
DROP INLET	
TROLLEY POLE	
POWER POLE	
TELEPHONE POLE	
TREES	
HEDGE	

CURVE DATA	
DEFLECTION ANGLE	Δ
DEGREE OF CURVE	D
RADIUS OF CURVE	R
TANGENT DISTANCE	T
LENGTH OF CURVE	L
EXTERNAL DISTANCE	E
POINT OF INTERSECTION	P. I.
POINT OF CURVE	P. C.
POINT OF TANGENT	P. T.
POINT ON TANGENT	P. O. T.

SCALES
PLAN 1" = 20 FEET
VERT. 1" = 20 FEET
HORIZ. 1" = 20 FEET
SECTIONS 1" = 5 FEET

LAYOUT
SEE SHEET 3

THIS PROJECT TO BE CONSTRUCTED IN ACCORDANCE WITH STANDARD SPECIFICATIONS ON FILE WITH THE U.S. BUREAU OF PUBLIC ROADS.
STRUCTURES ON THIS PROJECT TO BE CONSTRUCTED IN ACCORDANCE WITH DETAILS GIVEN ON STANDARD STRUCTURE SHEETS SERIES NOS. S17-16-18.

RECOMMENDED []
DISTRICT ENGINEER BUREAU OF PUBLIC
RECOMMENDED FOR APPROVAL []
CHIEF ENGINEER BUREAU OF PUBLIC
APPROVED []
DIRECTOR BUREAU OF PUBLIC ROAD

INDEX OF SHEETS

SHEET NO. 1	TITLE PAGE
" 2	TYPICAL CROSS-SECTION OF IMPROVEMENT (24' GRAVEL)
" 3	PLAN AND PROFILE FOR BRIDGE NO. 40
" 4	SL.B. 20'-CR-20' SQUARE (GRAVEL)
" 5	SL.A.G. 12' SQUARE 30 WINGS
" 6	PLAN AND PROFILE FOR BRIDGE NO. 41-A
" 7	S.T.B. 20'-50' 30 SKEW (2 SPANS)
" 8	S.A.G. 8' 30 SKEW
" 9	S.P. 1 PIER DETAILS
" 10	S.P. 2 " "
" 11	PLAN AND PROFILE FOR BRIDGE NO. 41
" 12	SL.B. 20'-CR-20' SQUARE (GRAVEL)
" 13	SL.A.G. 8' SQUARE 30 WINGS
" 14	PLAN AND PROFILE FOR BRIDGE NO. 42
" 15	SL.B. 20'-CR-20' SPAN 30 SKEW (GRAVEL)
" 16	SL.A.G. 8' 30 SKEW 30 WINGS
" 17	PLAN AND PROFILE FOR BRIDGE NO. 43
" 18	SL.B. 20'-CR-20' SPAN SQUARE (GRAVEL)
" 19	SL.A.G. 6' SQUARE 30 WINGS
" 20	PLAN AND PROFILE FOR FORD BRIDGE
" 21	S.B. 12'-80' STEEL SUPERSTRUCTURE
" 22	DETAILS ABUTMENT NO. 1
" 23	" " 2
" 24	S.B. 1 TYPICAL DETAILS FOR STEEL BRIDGES
" 25	S.B. 2 TYPICAL DETAILS
" 26	S.B. 3 SKEW ENDS
" 27	S.B. 5 STANDARD CABLE RAIL AND CURB

STATE OF VERMONT
STATE HIGHWAY DEPARTMENT

PLAN AND PROFILE OF PROPOSED
STATE HIGHWAY

FEDERAL AID PROJECT

TOWN OF BRAINTREE

RANDOLPH-ROXBURY ROAD

BRIDGE NO. 40 OVER TILLSON BROOK 30 MILES NORTH OF RANDOLPH VILLAGE
LENGTH 18.5 FEET=0.003 MILES *Replaced by 12'16' CGMPPA as ST-145M 1957*

BRIDGE NO. 41A OVER THIRD BRANCH OF WHITE RIVER 0.5 MILES SOUTH OF BRAINTREE DEPOT
LENGTH 108.0 FEET=0.020 MILES *Vt #12A, B3 over 3rd Branch White River*

BRIDGE NO. 41 OVER ^{Dunham Brook} CAMPBELL BROOK AT BRAINTREE DEPOT
LENGTH 22.5 FEET=0.004 MILES *Vt #12A, B9 over Dunham Brook Widened 1957 as ST 145M*

BRIDGE NO. 42 OVER BACHELLOR BROOK 0.5 MILES NORTH OF BRAINTREE DEPOT
LENGTH 22.5 FEET=0.004 MILES *Vt #12A, B8 over Batchelor Brook Widened 1957 as ST 145M Should be B9 R.M. 72*

BRIDGE NO. 43 OVER BRACKETT BROOK 0.8 MILES NORTH OF BRAINTREE DEPOT
LENGTH 22.5 FEET=0.004 MILES *Vt #12A, B11 over Brackett Brook Widened 1957 as ST 145M*

RIFFORD BROOK ROAD

FORD BRIDGE OVER THIRD BRANCH OF WHITE RIVER AT MOUTH OF RIFFORD BROOK
LENGTH 80.0 FEET=0.015 MILES *Vt #46, B11 over 3rd Branch White River*

CONVENTIONAL SIGNS

COUNTY LINE	GROUND ELEVATION
TOWN LINE	FENCE LINE
STONE WALL	GRADE ELEVATION
UNFENCED PROPERTY	
RAILROAD	
RETAINING WALL	
CULVERT	
DROP INLET	
TROLLEY POLE	
POWER POLE	
TELEPHONE POLE	
TREES	
HEDGE	

CURVE DATA

DEFLECTION ANGLE	Δ
DEGREE OF CURVE	D
RADIUS OF CURVE	R
TANGENT DISTANCE	T
LENGTH OF CURVE	L
EXTERNAL DISTANCE	E
POINT OF INTERSECTION	P. I.
POINT OF CURVE	P. C.
POINT OF TANGENT	P. T.
POINT ON TANGENT	P. O. T.

SCALES
PLAN 1" = 20 FEET
PROFILE VERT. 1" = 20 FEET
HORIZ. 1" = 20 FEET
SECTIONS 1" = 5 FEET

LAYOUT
SEE SHEETS 3

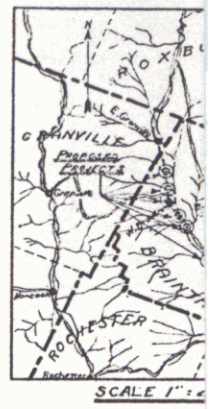
THIS PROJECT TO BE CONSTRUCTED IN ACCORDANCE WITH STANDARD SPECIFICATIONS ON FILE WITH THE U.S. BUREAU OF PUBLIC ROADS.

STRUCTURES ON THIS PROJECT TO BE CONSTRUCTED IN ACCORDANCE WITH DETAILS GIVEN ON STANDARD STRUCTURE SHEETS SERIES NOS. S17-18-19.

DISTRICT NO. 7
BRIDGE NOS.
BRAINTREE

MM 0390
Bridge 6

FED. ROAD DIST. NO. 9 STATE VT.



RIGHT-OF-WAY
TOWN

Rte. U+12

APPROVED: MAY 1957

H.E.

SUBMITTED BY ORDER

District Engineer

RECOMMENDED

DISTRICT ENGINEER

RECOMMENDED FOR APPROVAL

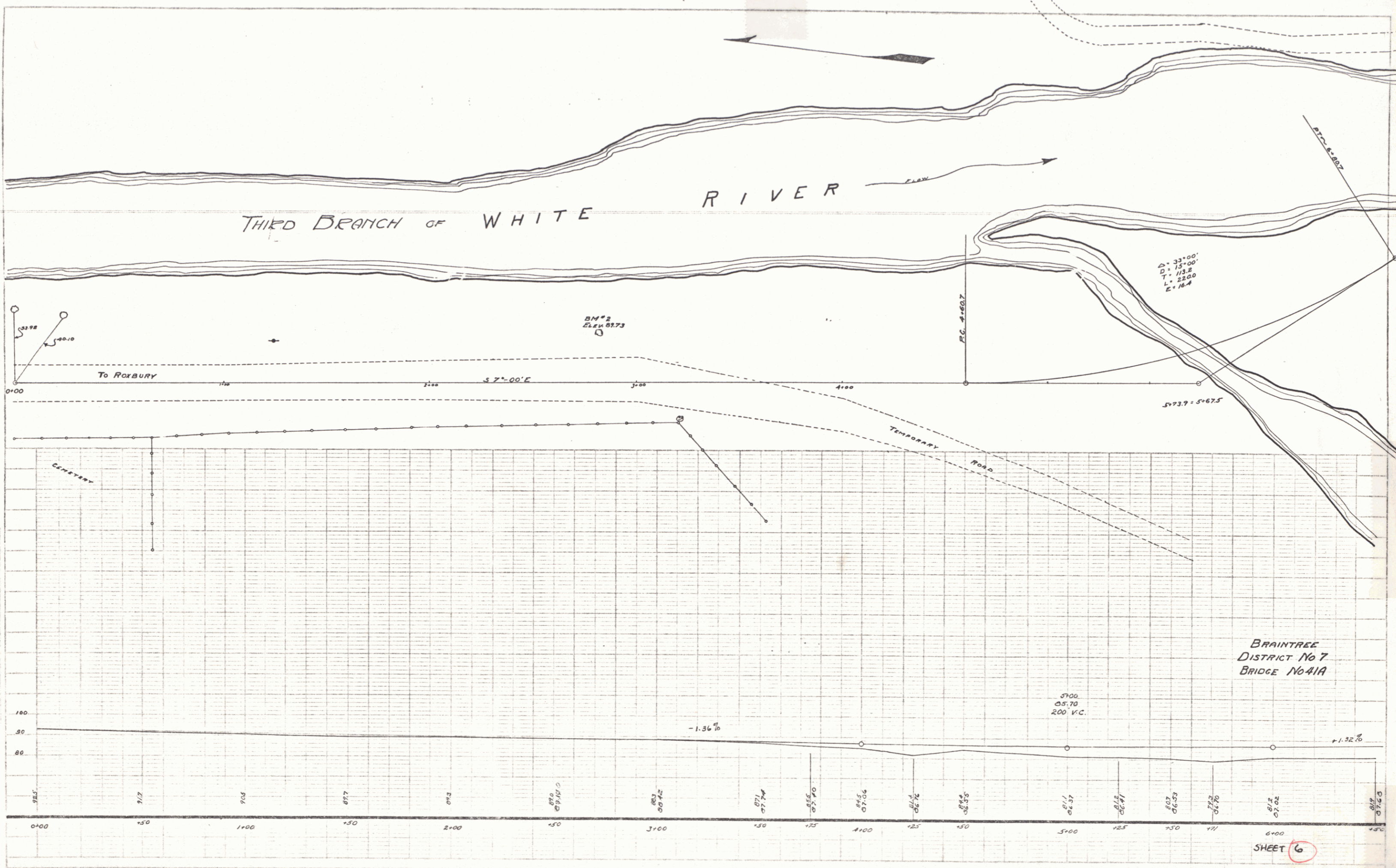
CHIEF ENGINEER

APPROVED

DISTRICT ENGINEER

SHEET 1

SERIES F. 3 SHEET

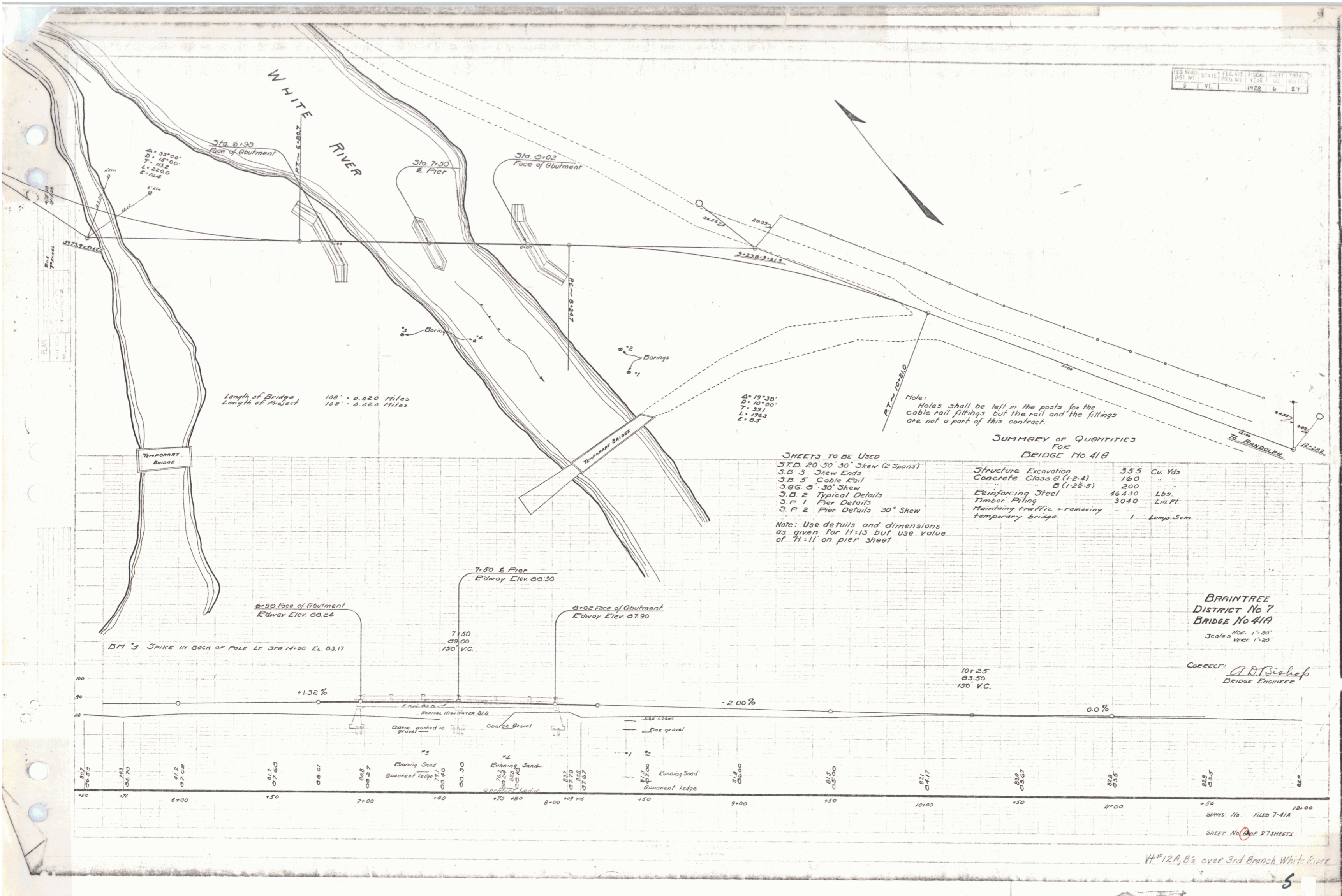


PLAN
 DISTRICT NO. 7
 BRIDGE NO. 41A
 BRAintree DISTRICT
 1911

PROF.
 DISTRICT NO. 7
 BRIDGE NO. 41A
 BRAintree DISTRICT
 1911

SHEET 6

FED. ROAD DIST. NO.	STATE	FISCAL YEAR	SHEET NO.	TOTAL SHEETS
9	VT.	1928	6	27



$\Delta = 33^\circ 00'$
 $D = 15.00'$
 $T = 13.50'$
 $L = 250.0'$
 $E = 16.8'$

Length of Bridge 108' - 0.000 Miles
 Length of Project 108' - 0.000 Miles

$\Delta = 19^\circ 30'$
 $D = 10.00'$
 $T = 32.1'$
 $L = 192.3'$
 $E = 6.5'$

Note:
 Holes shall be left in the posts for the cable rail fittings but the rail and the fittings are not a part of this contract.

- SHEETS TO BE USED**
- S.T.D. 20 30' 30" Skew (2 Spans)
 - S.B. 3 Skew Ends
 - S.B. 5 Cable Rail
 - S.G. 3 30' Skew
 - S.B. 2 Typical Details
 - S.P. 1 Pier Details
 - S.P. 2 Pier Details 30° Skew
- Note: Use details and dimensions as given for H-13 but use value of H-11 on pier sheet

SUMMARY OF QUANTITIES FOR BRIDGE No. 41A

Structure Excavation	355	Cu. Yds.
Concrete Class A (12-4)	180	"
" " B (12-5)	200	"
Reinforcing Steel	46430	Lbs.
Timber Piling	3040	Lin. Ft.
Maintaining traffic - removing temporary bridge	1	Lump Sum

BRAintree
 DISTRICT No. 7
 BRIDGE No. 41A
 Scale: Hor. 1"=20'
 Vert. 1"=20'

CORRECTED: *A. D. Bishop*
 BRIDGE ENGINEER

SERIES No. 1528 7-41A
 SHEET No. 6 OF 27 SHEETS

VH 12A, B₂ over 3rd Branch White River

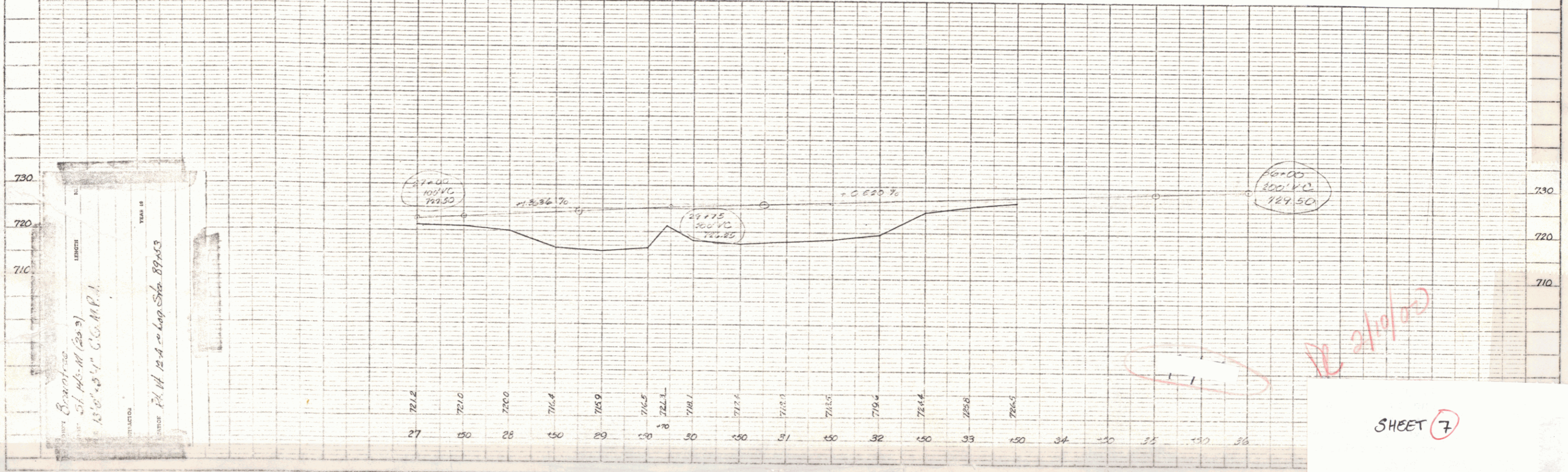
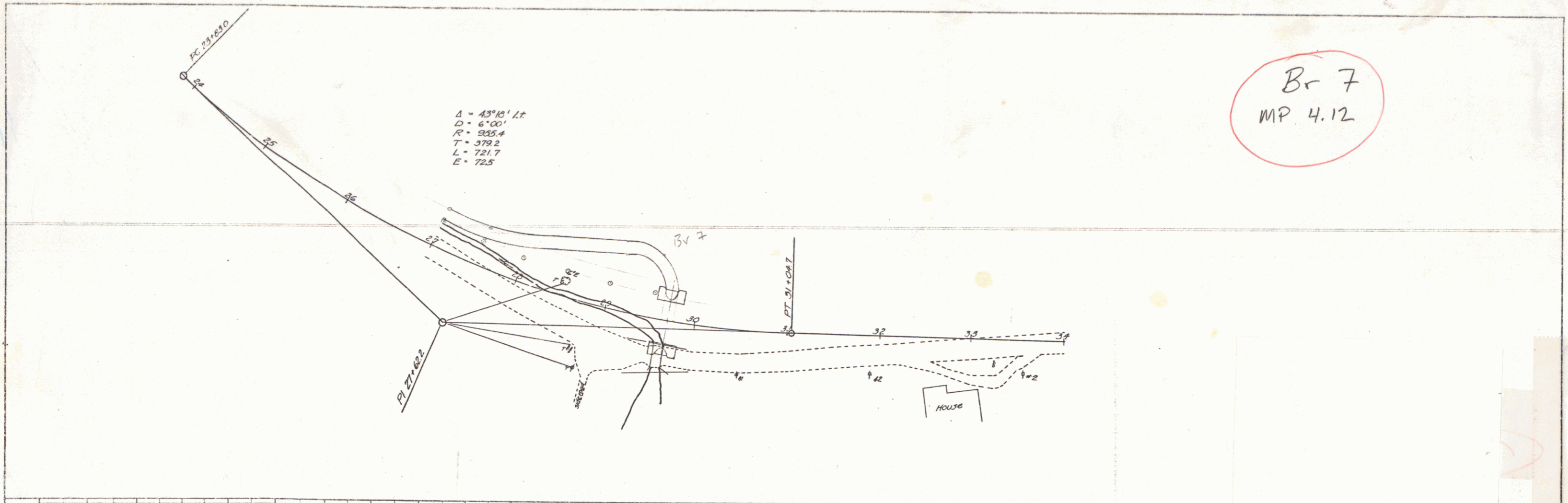
Scanned 6/2/99

Br 7
MP 4.12

$\Delta = 43^{\circ}10' Lt$
 $D = 6^{\circ}00'$
 $R = 285.4$
 $T = 379.2$
 $L = 721.7$
 $E = 72.5$

PLAN
DATE
SCALE
BY
CHECKED
DATE

PLAN
DATE
SCALE
BY
CHECKED
DATE



BRIDGE
DATE
SCALE
BY
CHECKED
DATE

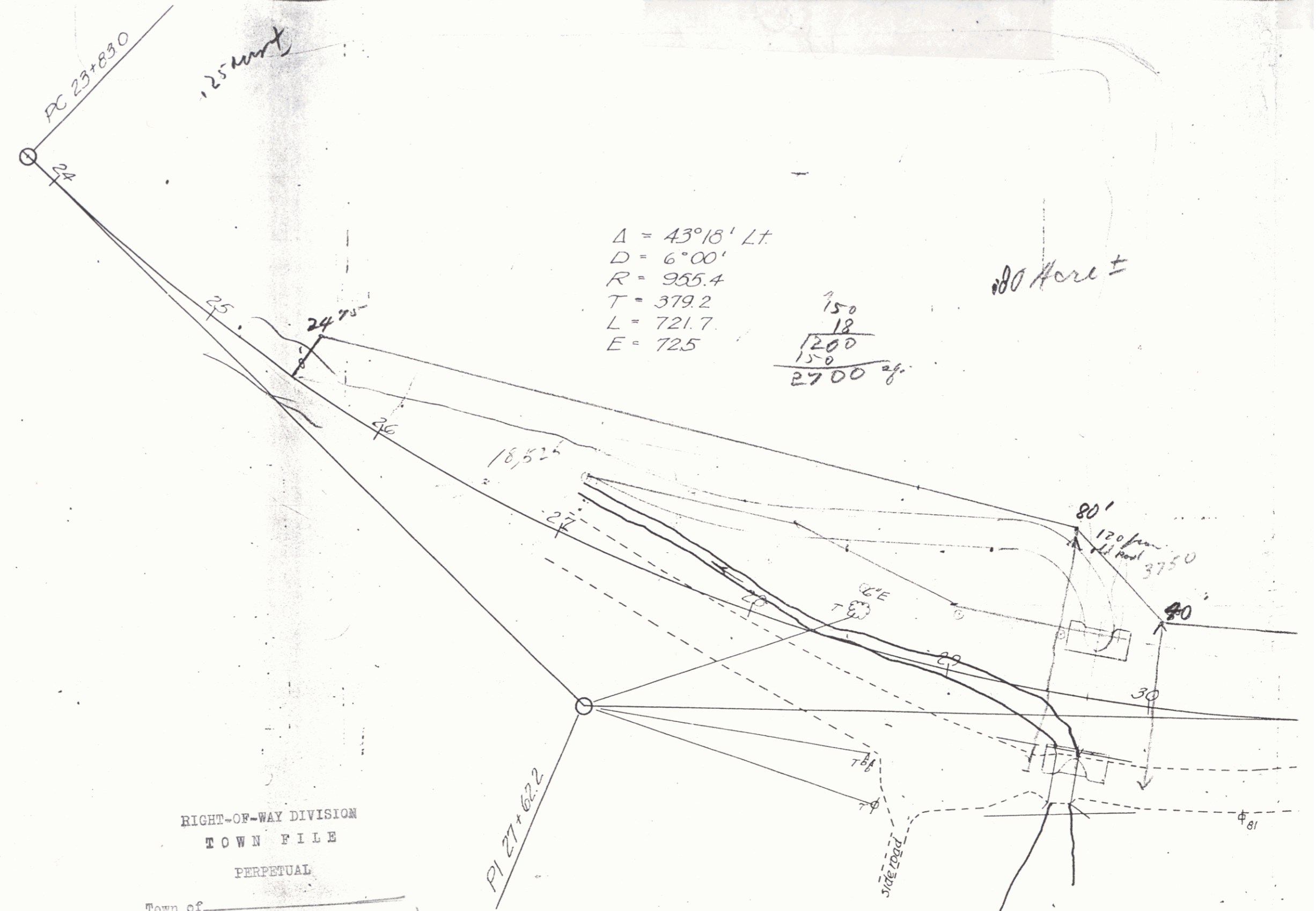
12/21/99

SHEET 7

9501

C-1-CX, S/10

- 25+50 - 0'
- 26+0 - 40'
- 26+50 - 48'
- 27+0 - 53'
- 27+50 - 65'
- 28+0 - 75'
- 28+50 - 90'
- 29+0 - 105'
- 29+50 - 115'
- 30+0 - 80'
- 31+0 - 70'
- 32+0 - 50'
- 33+0 - 40'



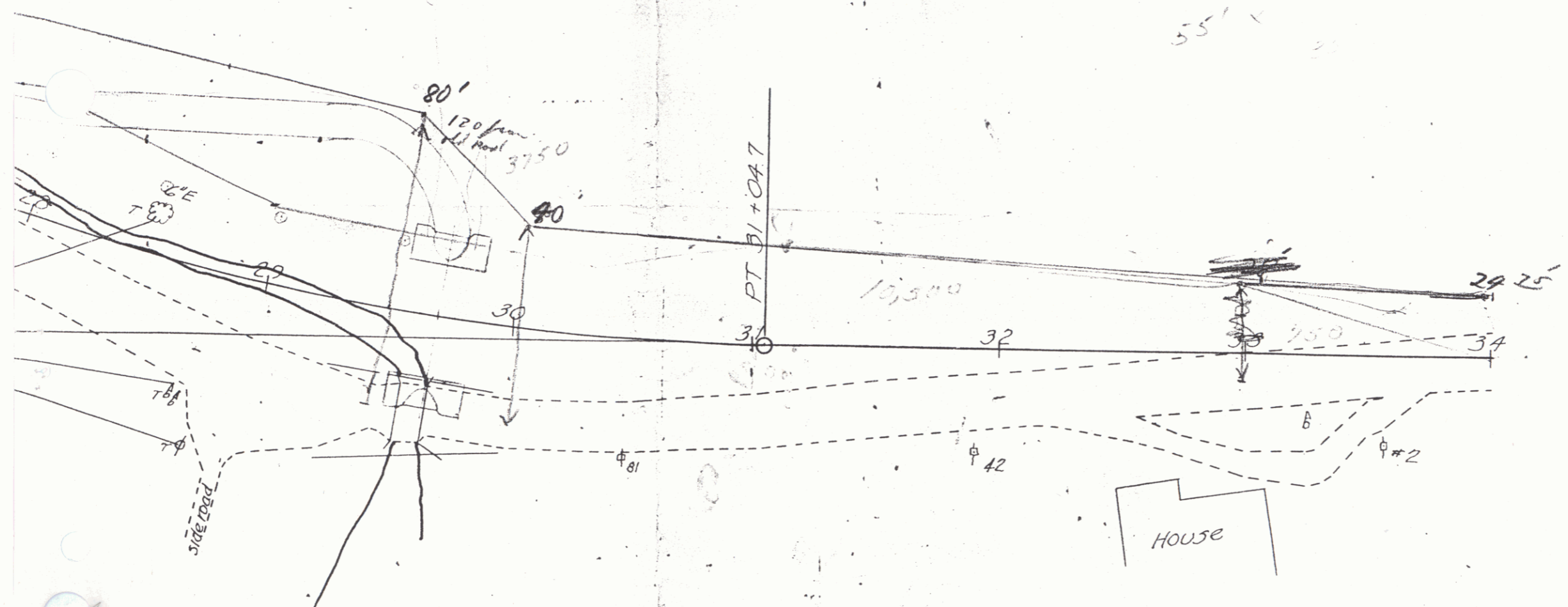
RIGHT-OF-WAY DIVISION
TOWN FILE
PERPETUAL
Town of _____
(To Be Returned to _____ Division)

RIGHT-OF-WAY DIVISION
TOWN FILE
PERPETUAL SHEET 7A
Town of Braintree Vt 124 MM4.12
(To Be Returned to R.O.W. Division)
10/30/56 ST145M Acquisition from Hill 7

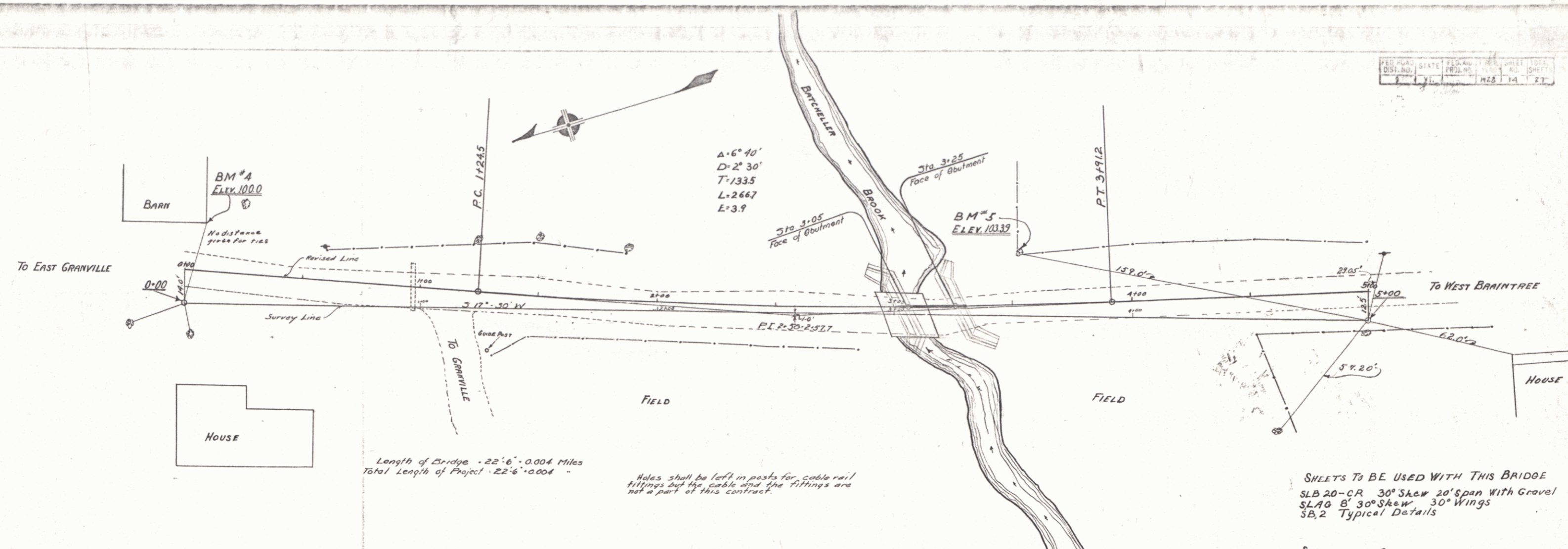
L.T.

$$\begin{array}{r}
 750 \\
 18 \\
 \hline
 1200 \\
 150 \\
 \hline
 2700 \text{ sq.}
 \end{array}$$

80' Here ±

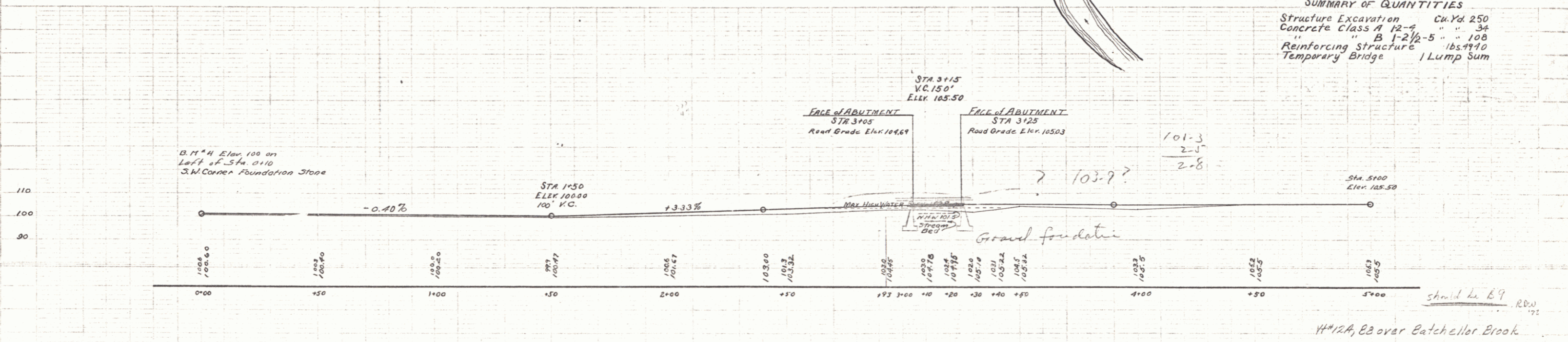


RIGHT-OF-WAY DIVISION
 TOWN FILE
 PERPETUAL SHEET (7B)
 Town of Braintree Vt 12A MM 4.12
 (To Be Returned To R.O.W. Division)
 ST 145M Acquisition from Hill
 10/30/56



SHEETS TO BE USED WITH THIS BRIDGE
 SLB 20-CR 30° Skew 20' span With Gravel
 SLAB B' 30° Skew 30' Wings
 SB, 2 Typical Details

SUMMARY OF QUANTITIES
 Structure Excavation Ck. Yd. 250
 Concrete Class A 12-4 " " 34
 " " B 1-2 1/2-5 " " 108
 Reinforcing Structure lbs 9910
 Temporary Bridge 1 Lump Sum



44" x 24" B9 over Betchell Brook

DISTRICT NO 7
 BRIDGE No 42-129
 BRAINTREE, VT.
 Scales HOR. 1"=20'
 VERT. 1"=20'
 SERIES No. FILED 7-42
 SHEET 14 OF 27 SHEETS

C. D. Bishop

INDEX OF SHEETS

SHEET NO. 1	TITLE PAGE
" 2	TYPICAL CROSS-SECTION OF IMPROVEMENT (24' GRAVEL)
" 3	PLAN AND PROFILE FOR BRIDGE NO.40
" 4	SL.B. 20'-CR.-16' SQUARE (GRAVEL)
" 5	SL.A.G. 12' SQUARE 30 WINGS
" 6	PLAN AND PROFILE FOR BRIDGE NO.41-A
" 7	S.T.B. 20'-50' 30 SKEW (2 SPANS)
" 8	S.A.G. 8' 30 SKEW
" 9	S.P. 1 PIER DETAILS
" 10	S.P. 2 "
" 11	PLAN AND PROFILE FOR BRIDGE NO.41
" 12	SL.B. 20'-CR.-20' SQUARE (GRAVEL)
" 13	SL.A.G. 8' SQUARE 30 WINGS
" 14	PLAN AND PROFILE FOR BRIDGE NO.42
" 15	SL.B. 20'-CR.-20' SPAN 30 SKEW (GRAVEL)
" 16	SL.A.G. 8' 30 SKEW 30 WINGS
" 17	PLAN AND PROFILE FOR BRIDGE NO.43
" 18	SL.B. 20'-CR.-20' SPAN SQUARE (GRAVEL)
" 19	SL.A.G. 6' SQUARE 30 WINGS
" 20	PLAN AND PROFILE FOR FORD BRIDGE
" 21	S.B. 12'-80' STEEL SUPERSTRUCTURE
" 22	DETAILS ABUTMENT NO. 1
" 23	" 2
" 24	S.B. 1 TYPICAL DETAILS FOR STEEL BRIDGES
" 25	S.B. 2 TYPICAL DETAILS
" 26	S.B. 3 SKEW ENDS
" 27	S.B. 5 STANDARD CABLE RAIL AND CURB

STATE OF VERMONT
STATE HIGHWAY DEPARTMENT

PLAN AND PROFILE OF PROPOSED
STATE HIGHWAY
TOWN OF BRAINTREE

FEDERAL AID PROJECT

RANDOLPH-ROXBURY ROAD

BRIDGE NO.40 OVER TILLSON BROOK 30 MILES NORTH OF RANDOLPH VILLAGE
LENGTH 18.5 FEET=0.003 MILES *Replaced by 12'x6' CGMPDA as ST-145-M 1957*

BRIDGE NO.41A OVER THIRD BRANCH OF WHITE RIVER 0.5 MILES SOUTH OF BRAINTREE DEPOT
LENGTH 108.0 FEET=0.020 MILES *Vt#12A, 86 over 3rd Branch White River*

BRIDGE NO.41 OVER ^{Dunham Brook} CAMPBELL BROOK AT BRAINTREE DEPOT
LENGTH 22.5 FEET=0.004 MILES *Vt#12A, 89 over Dunham Brook Widened 1957 as ST 145M*

BRIDGE NO.42 OVER BATEHELLOR BROOK 0.5 MILES NORTH OF BRAINTREE DEPOT
LENGTH 22.5 FEET=0.004 MILES *Vt#12A, 88 over Batehellor Brook Widened 1957 as ST 145M*

BRIDGE NO.43 OVER BRACKETT BROOK 0.8 MILES NORTH OF BRAINTREE DEPOT
LENGTH 22.5 FEET=0.004 MILES *Vt#12A, 811 over Brackett Brook Widened 1957 as ST 145M*

RIFFORD BROOK ROAD

FORD BRIDGE OVER THIRD BRANCH OF WHITE RIVER AT MOUTH OF RIFFORD BROOK
LENGTH 80.0 FEET=0.015 MILES *Vt#46, P11 over 3rd Branch White River*

FED. ROAD DIST. NO. 9 STATE VT. FED. AID PROJ. NO. 100



RIGHT-OF-WAY DIVISION
TOWN FILE
PERPETUAL
pte UT 12 A

APPROVED: MAY 31, 1926
H.E. La
SUBMITTED BY ORDER OF THE
S. P. 15

DISTRICT NO. 7
BRIDGE NOS.
BRAINTREE

*Project 7-40
Bridge 9
MM 0540*

CONVENTIONAL SIGNS

COUNTY LINE	GROUND ELEVATION
TOWN LINE	GRADE ELEVATION
FENCE LINE	
STONE WALL	
UNFENCED PROPERTY	
GUARD RAIL	
TRAVELED WAY	
RAILROAD	
RETAINING WALL	
CENTER LINE	
SURVEY LINE	
CULVERT	
DROP INLET	
TROLLEY POLE	
POWER POLE	
TELEPHONE POLE	
TREES	
HEDGE	

CURVE DATA

DEFLECTION ANGLE	Δ
DEGREE OF CURVE	D
RADIUS OF CURVE	R
TANGENT DISTANCE	T
LENGTH OF CURVE	L
EXTERNAL DISTANCE	E
POINT OF INTERSECTION	P. I.
POINT OF CURVE	P. C.
POINT OF TANGENT	P. T.
POINT ON TANGENT	P. O. T.

SCALES
PLAN 1" = 20 FEET
VERT. 1" = 20 FEET
HORIZ. 1" = 20 FEET
SECTIONS 1" = 5 FEET

LAYOUT
SEE SHEET 3

THIS PROJECT TO BE CONSTRUCTED IN ACCORDANCE WITH STANDARD SPECIFICATIONS ON FILE WITH THE U.S. BUREAU OF PUBLIC ROADS.

STRUCTURES ON THIS PROJECT TO BE CONSTRUCTED IN ACCORDANCE WITH DETAILS GIVEN ON STANDARD STRUCTURE SHEETS SERIES NOS. S17-18-19.

RECOMMENDED
RECOMMENDED FOR APPROVAL
APPROVED

SERIES F. No. SHEET 11 OF 11

FED. ROAD DIST. NO.	STATE	FED. AID PROJ. NO.	FISCAL YEAR	SHEET NO.	TOTAL SHEETS
9	Vt.		1928	1	27

INDEX OF SHEETS

SHEET NO. 1	TITLE PAGE
" 2	TYPICAL CROSS-SECTION OF IMPROVEMENT (24' GRAVEL)
" 3	PLAN AND PROFILE FOR BRIDGE NO. 40
" 4	SL.B. 20'-CR-16' SQUARE (GRAVEL)
" 5	SL.A.G. 12' SQUARE 30 WINGS
" 6	PLAN AND PROFILE FOR BRIDGE NO. 41-A
" 7	S.T.B. 20'-50' 30 SKEW (2 SPANS)
" 8	S.A.G. 8' 30 SKEW
" 9	S.P. 1 PIER DETAILS
" 10	S.P. 2 "
" 11	PLAN AND PROFILE FOR BRIDGE NO. 41
" 12	SL.B. 20'-CR-20' SQUARE (GRAVEL)
" 13	SL.A.G. 8' SQUARE 30 WINGS
" 14	PLAN AND PROFILE FOR BRIDGE NO. 42
" 15	SL.B. 20'-CR-20' SPAN 30 SKEW (GRAVEL)
" 16	SL.A.G. 8' 30 SKEW 30 WINGS
" 17	PLAN AND PROFILE FOR BRIDGE NO. 43
" 18	SL.B. 20'-CR-20' SPAN SQUARE (GRAVEL)
" 19	SL.A.G. 6' SQUARE 30 WINGS
" 20	PLAN AND PROFILE FOR FORD BRIDGE
" 21	S.B. 12'-80' STEEL SUPERSTRUCTURE
" 22	DETAILS ABUTMENT NO. 1
" 23	" " 2
" 24	S.B. 1 TYPICAL DETAILS FOR STEEL BRIDGES
" 25	S.B. 2 TYPICAL DETAILS
" 26	S.B. 3 SKEW ENDS
" 27	S.B. 5 STANDARD CABLE RAIL AND CURB

STATE OF VERMONT
STATE HIGHWAY DEPARTMENT

PLAN AND PROFILE OF PROPOSED
STATE HIGHWAY
FEDERAL AID PROJECT
TOWN OF BRAINTREE

RANDOLPH-ROXBURY ROAD

BRIDGE NO. 40 OVER TILLSON BROOK 30 MILES NORTH OF RANDOLPH VILLAGE
LENGTH 18.5 FEET=0.003 MILES *Replaced by 12'x6' CGMPPA as ST-145-M 1957*

BRIDGE NO. 41A OVER THIRD BRANCH OF WHITE RIVER 0.5 MILES SOUTH OF BRAINTREE DEPOT
LENGTH 108.0 FEET=0.020 MILES *Vt #12A, B3 over 3rd Branch White River*

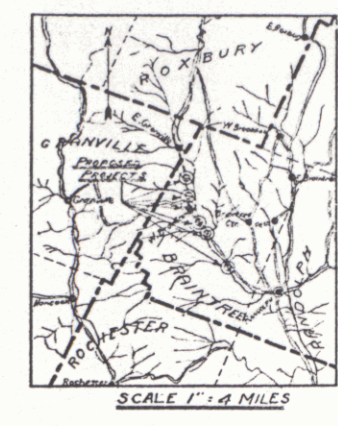
BRIDGE NO. 41 OVER CAMPBELL BROOK AT BRAINTREE DEPOT
LENGTH 22.5 FEET=0.004 MILES *Dunham Brook Vt #12A, B1 over Dunham Brook Widened 1957 as ST 145M*

BRIDGE NO. 42 OVER BACHELLOR BROOK 0.5 MILES NORTH OF BRAINTREE DEPOT
LENGTH 22.5 FEET=0.004 MILES *Vt #12A, B3 over Batchellor Brook Widened 1957 as ST 145M*

BRIDGE NO. 43 OVER BRACKETT BROOK 0.8 MILES NORTH OF BRAINTREE DEPOT
LENGTH 22.5 FEET=0.004 MILES *Vt #12A, B11 over Brackett Brook Widened 1957 as ST 145M*

RIFFORD BROOK ROAD

FORD BRIDGE OVER THIRD BRANCH OF WHITE RIVER AT MOUTH OF RIFFORD BROOK
LENGTH 80.0 FEET=0.015 MILES *Vt #44, P11 over 3rd Branch White River*



RIGHT-OF-WAY DIVISION
TOWN FILE
TERMINAL
Pte of UT 12 A

APPROVED: MAY 31, 1928
H.E. Sargent,
CHIEF ENGINEER
SUBMITTED BY ORDER OF THE STATE HIGHWAY
S. B. Bates
COMMISSIONER OF HIGHWAYS

CONVENTIONAL SIGNS

COUNTY LINE	GROUND ELEVATION
TOWN LINE	GRADE ELEVATION
FENCE LINE	
STONE WALL	
UNFENCED PROPERTY	
GUARD RAIL	
TRAVELED WAY	
RAILROAD	
RETAINING WALL	
CENTER LINE	
SURVEY LINE	
CULVERT	
DROP INLET	
TROLLEY POLE	
POWER POLE	
TELEPHONE POLE	
TREES	
HEDGE	

CURVE DATA

DEFLECTION ANGLE	Δ
DEGREE OF CURVE	D
RADIUS OF CURVE	R
TANGENT DISTANCE	T
LENGTH OF CURVE	L
EXTERNAL DISTANCE	E
POINT OF INTERSECTION	P. I.
POINT OF CURVE	P. C.
POINT OF TANGENT	P. T.
POINT ON TANGENT	P. O. T.

SCALES
PLAN 1" = 20 FEET
PROFILE VERT 1" = 20 FEET
HORIZ 1" = 20 FEET
SECTIONS 1" = 5 FEET

LAYOUT
SEE SHEET 3

THIS PROJECT TO BE CONSTRUCTED IN ACCORDANCE WITH STANDARD SPECIFICATIONS ON FILE WITH THE U.S. BUREAU OF PUBLIC ROADS.

STRUCTURES ON THIS PROJECT TO BE CONSTRUCTED IN ACCORDANCE WITH DETAILS GIVEN ON STANDARD STRUCTURE SHEETS SERIES NOS. 517-18-19.

DISTRICT NO. 7
BRIDGE NOS.
BRAINTREE

Project 7-40
Bridge 10
MM 0561

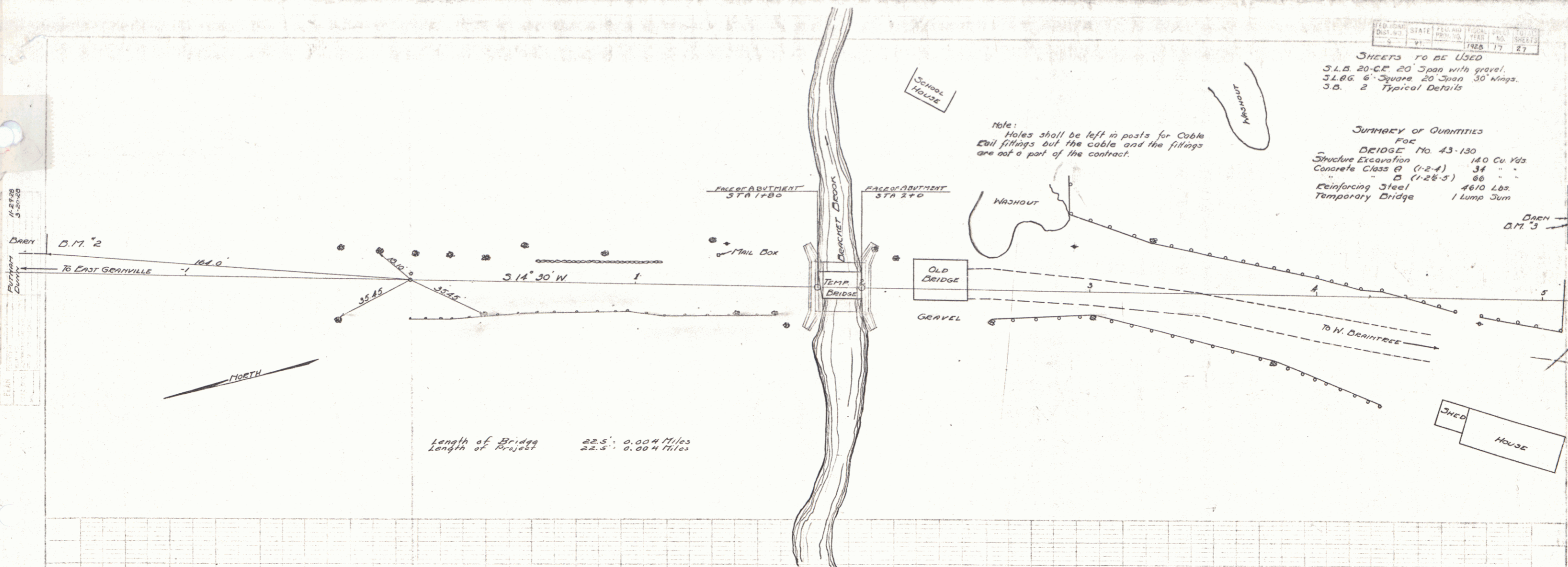
RECOMMENDED
DISTRICT ENGINEER
BUREAU OF PUBLIC
RECOMMENDED FOR APPROVAL
CHIEF ENGINEER
BUREAU OF PUBLIC
APPROVED
DIRECTOR - BUREAU OF PUBLIC HIGHWAYS

FED. ROAD DIST. NO. STATE PROJ. NO. LOCAL PROJ. NO. SHEETS
 5 VT 1928 17 27

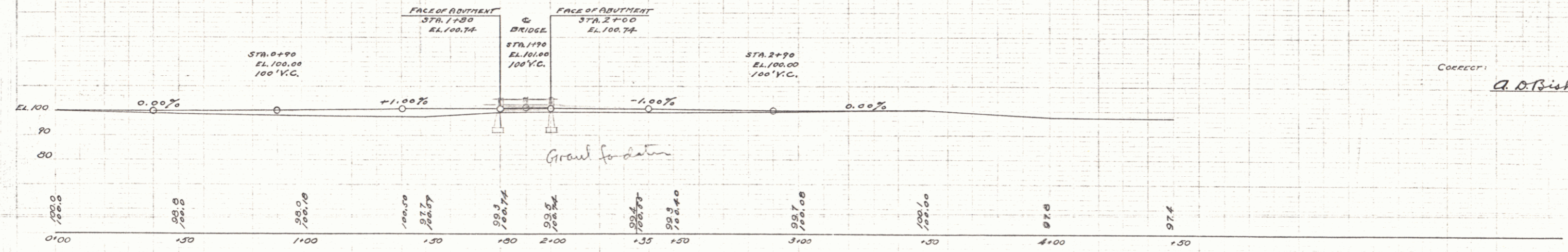
SHEETS TO BE USED
 3.L.B. 20-C.E. 20' Span with gravel.
 3.L.B.G. 6" Square 20' Span 30' wings.
 3.B. 2 Typical Details

SUMMARY OF QUANTITIES
 FOR
 BRIDGE No. 43-130
 Structure Excavation 140 Cu. Yds
 Concrete Class B (1-2-4) 34 " "
 " " " (1-2-6-5) 66 " "
 Reinforcing Steel 4610 Lbs.
 Temporary Bridge 1 Lump Sum

Note:
 Holes shall be left in posts for Cable
 Coil fittings but the cable and the fittings
 are not a part of the contract.



Length of Bridge 22.5' 0.004 Miles
 Length of Project 22.5' 0.004 Miles



D.M. 2 FOUNDATION STONE 3' N. CORNER OF BARN AT STA. 1+02 Elev. 100.00
 D.M. 3 FOUNDATION STONE 35' FT. L. STA. 5+11 Elev. 98.56

14 1/2 ft. over Brackett Brook
 DISTRICT No. 7
 BRIDGE No. 43-130
 DEARTEE
 Scale
 Hor. 1" = 20'
 Vert. 1" = 20'

SERIES No. FILED 7-43
 SHEET 17 OF 27 SHEETS