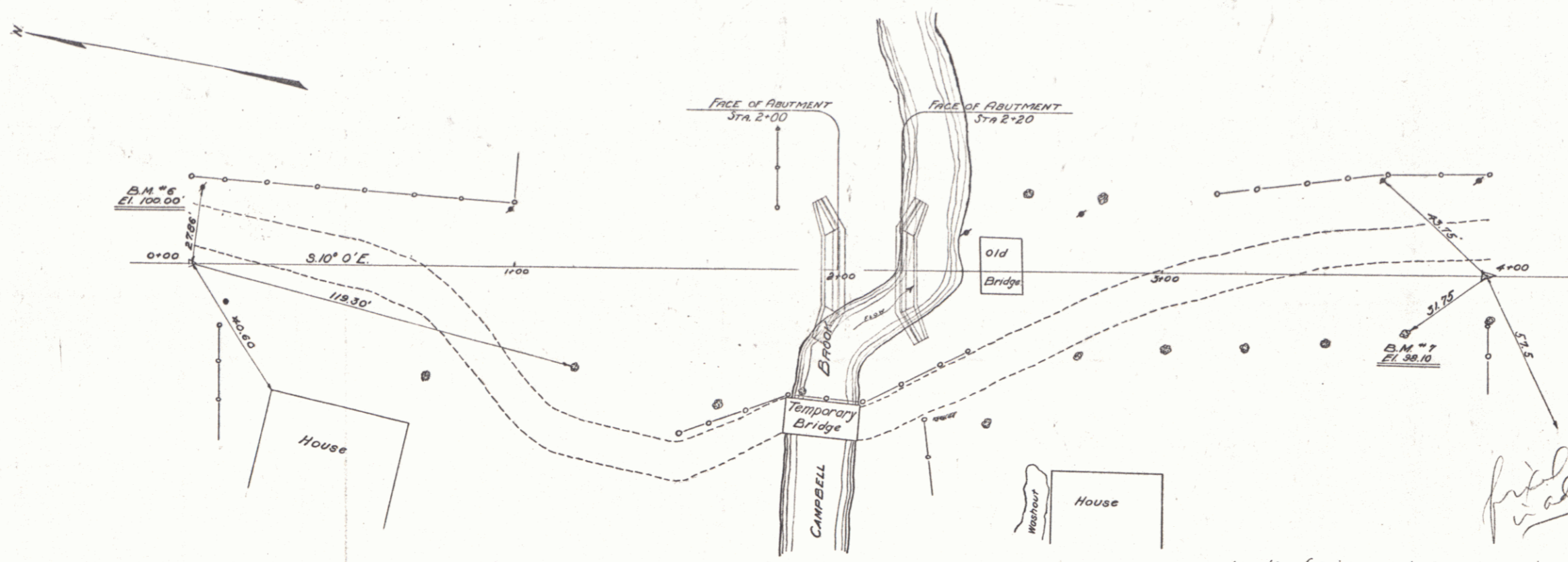


FED. ROAD DIST. NO.	STATE	FED. AID PROJ. NO.	FISCAL YEAR	SHEET NO.	TOTAL SHEETS
5	Vt.	1428	11	27	



SHEETS TO BE USED
 S-B 20 - CR 20 SQUARE SPAN 20 WITH GRAVEL
 S-LR 8 - SQUARE 30" WINGS
 S-B2 - TYPICAL DETAILS

SUMMARY OF QUANTITIES
 FOR
BRIDGE No. 41

STRUCTURE EXCAVATION	240 CuYds
CONCRETE CLASS A (1-2-4)	34 "
CONCRETE CLASS B (1-2 1/2-5)	38 "
REINFORCING STEEL	4780 Lbs.

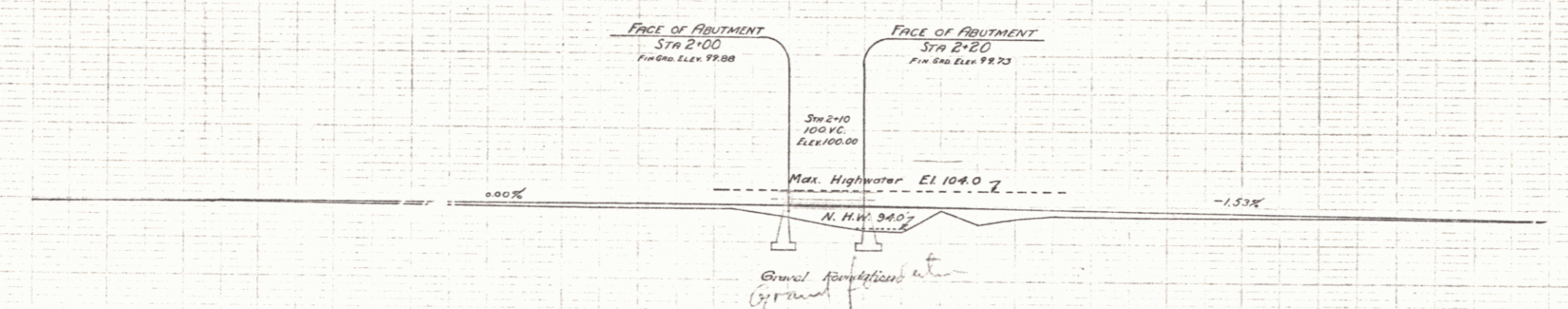
NOTE
 PRESENT TEMPORARY BRIDGE TO BECOME PROPERTY OF CONTRACTOR AND TO BE REMOVED

NOTE
 EXACT LINE AND GRADE OF APPROACHES AND POSITION OF BRIDGE TO BE DETERMINED BY THE ENGINEER LAYING OUT THE WORK.

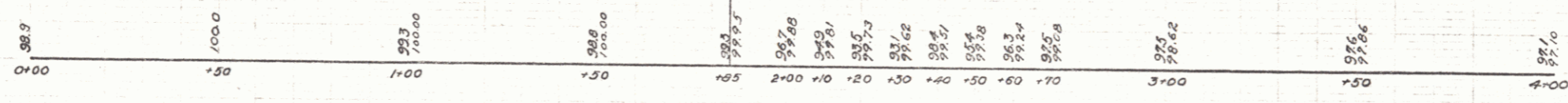
Length of Bridge 22'-6" 0.004 Miles
 Length of Project 22'-6" 0.004 Miles

NOTE
 HOLES SHALL BE LEFT IN PASTS FOR CABLE RAIL FITTINGS. THE CABLE AND THE FITTINGS ARE NOT A PART OF THIS CONTRACT.

Correct -
A. D. Bishop
 BRIDGE ENGINEER



B.M. #6 El 100.00
 Tack in Pole
 B.M. #7 El 98.10
 Spike in Tree



BRAINTREE, VT.
BRIDGE No. 41-128
DISTRICT No. 7
 11#12A, B9 over Dunham Brook

SPACES No. FILED 7-41
 SHEET No. 1 OF 27 SHEETS