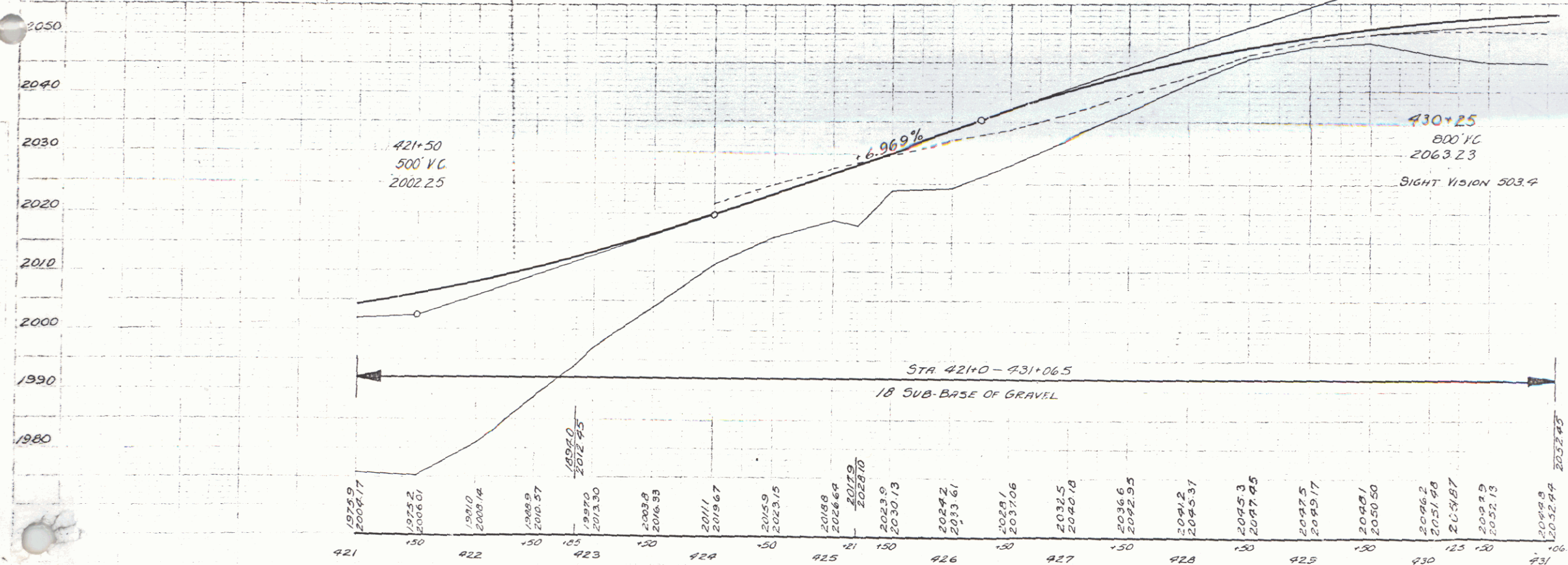
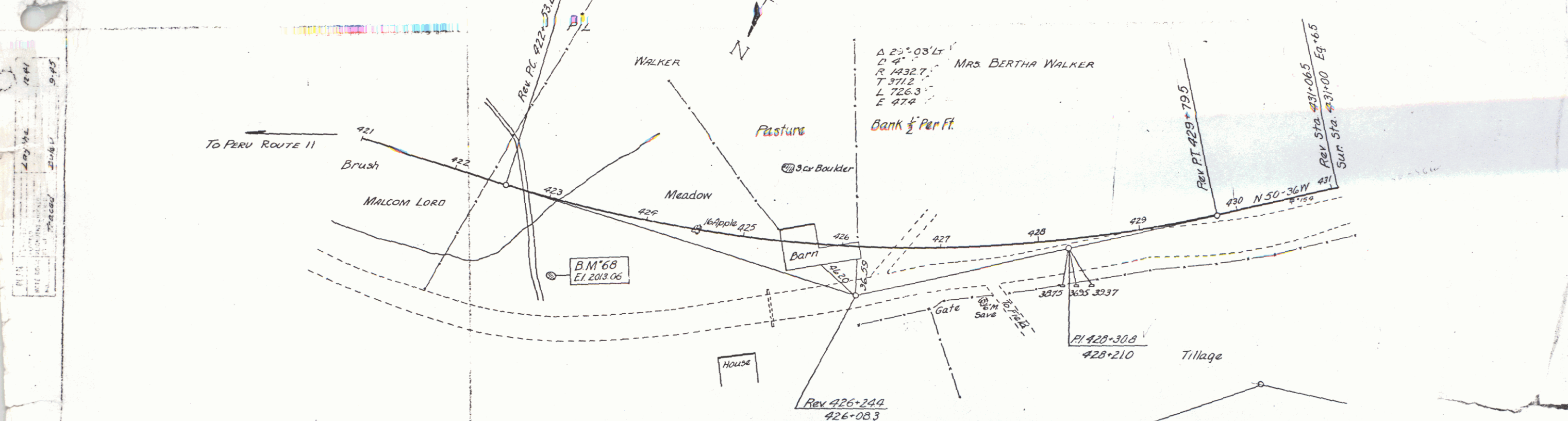


POOR ORIGINAL COPY



B.M. 68 SPOT ON BOULDER 120 FT STA 423+20 ELEV 2013.66

Station	Elevation
421	1975.9
150	2004.17
422	1975.2
150	2006.01
150	1971.0
150	2003.14
150	1968.9
150	2004.57
150	1995.0
150	2012.95
150	1997.0
150	2013.30
150	2003.8
150	2016.93
424	2011.1
150	2019.67
150	2005.9
150	2023.15
425	2018.8
150	2024.69
150	2017.9
150	2028.70
150	2023.9
150	2030.13
426	2024.2
150	2033.61
150	2028.1
150	2037.06
427	2032.5
150	2040.18
150	2035.6
150	2042.95
428	2041.8
150	2045.37
150	2045.3
150	2047.45
429	2042.5
150	2049.17
430	2048.1
150	2050.50
125	2046.2
125	2051.98
125	2049.87
125	2049.9
125	2052.13
431	2048.9
106.5	2052.94
106.5	2052.78

WIND 2