

INDEX OF SHEETS

SHEET NO. 1	TITLE PAGE
2-3	TYPICAL CROSS-SECTION OF IMPROVEMENT
4	BANKING AND WIDENING TABLES
5-10	PLAN AND PROFILE
11	STANDARD STRUCTURE SH. 5-28 - PIPE CULVERTS
12	5-30 - GUARD RAIL
12A	5-30A - STD. UNDERDRAIN, FED. AID MARKERS
13	5-31 - DROP INLETS
14	5-40 - BARRICADES, SIGNS & LIGHTS
15	5-41 - ROUNDING OF SLOPES
16-40	CROSS SECTIONS

STANDARD STRUCTURE SHEETS
 APPROVED BY THE CHIEF ENGINEER
 5-28 - JULY 11, 1933
 5-30 - AUG. 15, 1934
 5-31 - JULY 25, 1934

STATE OF VERMONT
 STATE HIGHWAY DEPARTMENT

PLAN AND PROFILE OF PROPOSED
 STATE HIGHWAY

FEDERAL AID PROJECT

TOWN OF MANCHESTER

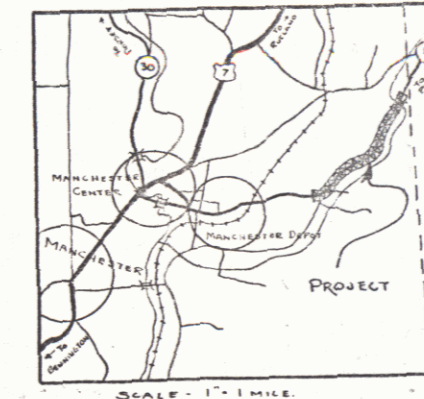
Pin # 99R889

MANCHESTER-PERU ROAD

BEGINNING AT A POINT 375 FT. WEST OF THE
 MANCHESTER-WINHALL TOWN LINE AND EXTENDING
 SOUTH-WESTERLY 1.325 MI.

LENGTH OF PROJECT = 7000.0 FT. = 1.325 MILES

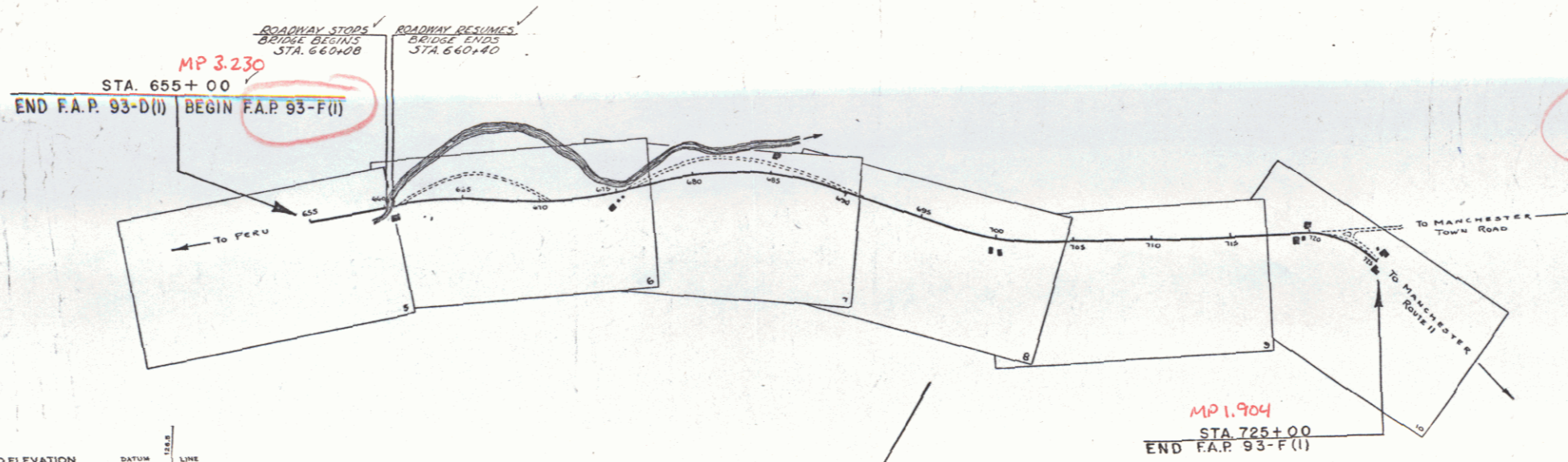
FED. ROAD DIST. NO.	STATE	FED. AID PROJ. NO.	SHEET NO.	TOTAL SHEETS
9	VT.	99R889	1	27



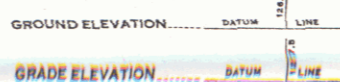
(To Be Returned To R.O.W. Division)
 TOWN OF
 PERU
 MANCHESTER
 HIGHWAY DEPARTMENT

RECORD PLANS
 By A.C. Birnie 5/1/44

Rt. VT 11



COUNTY LINE	---
TOWN LINE	---
FENCE LINE	---
STONE WALL	---
UNFENCED PROPERTY	---
GUARD RAIL	---
TRAVELED WAY	---
RAILROAD	---
RETAINING WALL	---
CENTER LINE	---
SURVEY LINE	---
CULVERT	---
DROP INLET	---
TROLLEY POLE	---
POWER POLE	---
TELEPHONE POLE	---
TREES	---
HEDGE	---



CURVE DATA	
DEFLECTION ANGLE	Δ
DEGREE OF CURVE	D
RADIUS OF CURVE	R
TANGENT DISTANCE	T
LENGTH OF CURVE	L
EXTERNAL DISTANCE	E
POINT OF INTERSECTION	P. I.
POINT OF CURVE	P. C.
POINT OF TANGENT	P. T.
POINT ON TANGENT	P. O. T.

SCALES	
TITLE	1" = 500'
TYPICAL	1" = 2'
PLAN	1" = 50'
PROFILE HORIZONTAL	1" = 50'
PROFILE VERTICAL	1" = 10'
CROSS SECTIONS	1" = 5'

THESE PLANS ARE SUBJECT TO SUCH REVISIONS AS MAY BE
 REQUIRED BY THE PUBLIC ROADS ADMINISTRATION OR THE COM-
 MISSIONER OF HIGHWAYS.
 CONSTRUCTION IS TO BE CARRIED ON IN ACCORDANCE WITH
 THE PLANS AND THE STANDARD ROAD AND BRIDGE SPECIFICATIONS
 OF 1936, AS APPROVED DECEMBER 29TH, 1936 BY THE PUBLIC
 ROADS ADMINISTRATION, INCLUDING ALL SUBSEQUENT APPROVED
 REVISIONS AND SUCH REVISED SPECIFICATIONS AND SPECIAL
 PROVISIONS AS ARE SUBMITTED WITH THE PLANS.

APPROVED: *H. J. Sargent*
 COMMISSIONER OF HIGHWAYS
 SUBMITTED BY ORDER OF THE STATE HIGHWAY BOARD

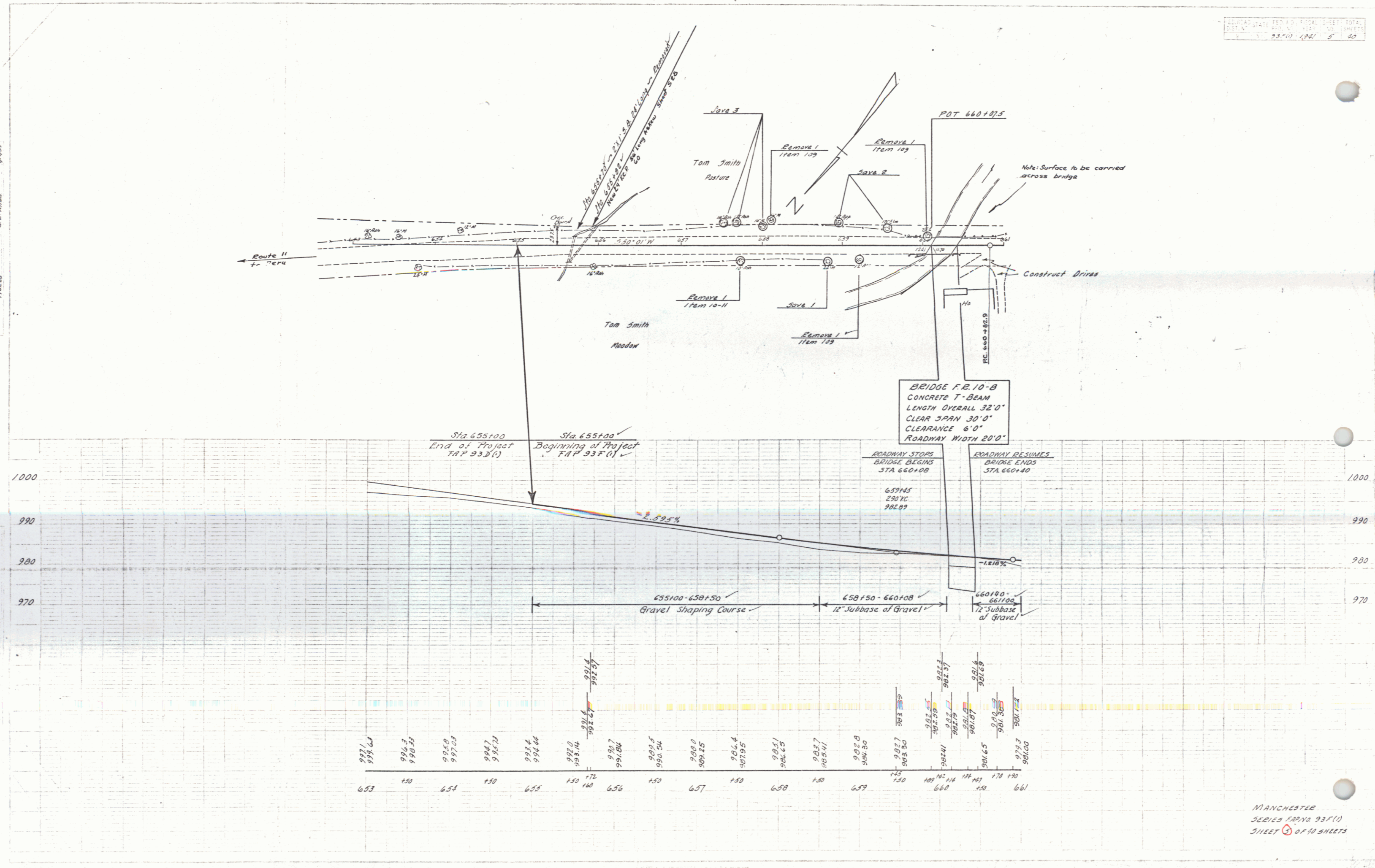
RECOMMENDED FOR APPROVAL
 DISTRICT ENGINEER
 PUBLIC ROADS ADMINISTRATION
 FEDERAL WORKS AGENCY

APPROVED
 DISTRICT ENGINEER
 PUBLIC ROADS ADMINISTRATION
 FEDERAL WORKS AGENCY

APPROVED *A. C. Birnie* ROAD ENGINEER
 APPROVED *H. J. Sargent* DISTRICT HIGHWAY COMMISSIONER
 SERIES F-27 No. 99R889 FILED
 SHEET 1 OF 27

DIST. # 11 PLANS

A.S. Barnett
 G.E. Allen
 Tracer
 MUM



BRIDGE F.R. 10-B
 CONCRETE T-BEAM
 LENGTH OVERALL 32'0"
 CLEAR SPAN 30'0"
 CLEARANCE 6'0"
 ROADWAY WIDTH 20'0"

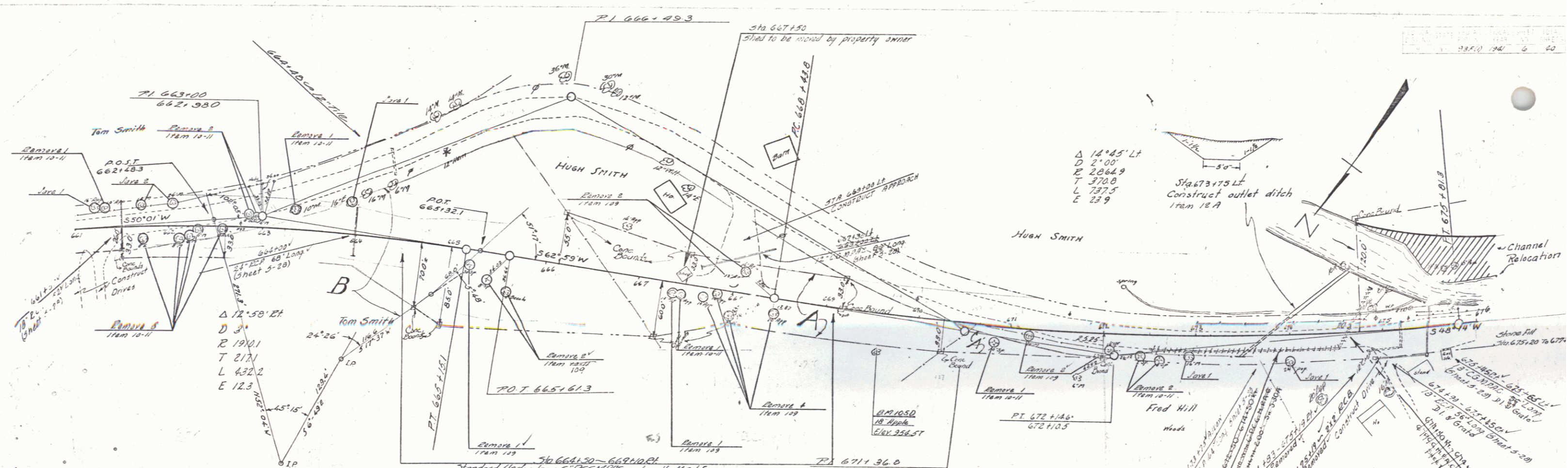
Sta 655100 End of Project TAP 937(1)
 Sta 655100 Beginning of Project TAP 937(1)

ROADWAY STOPS
 BRIDGE BEGINS
 STA 660108
 65915
 22010
 982.89

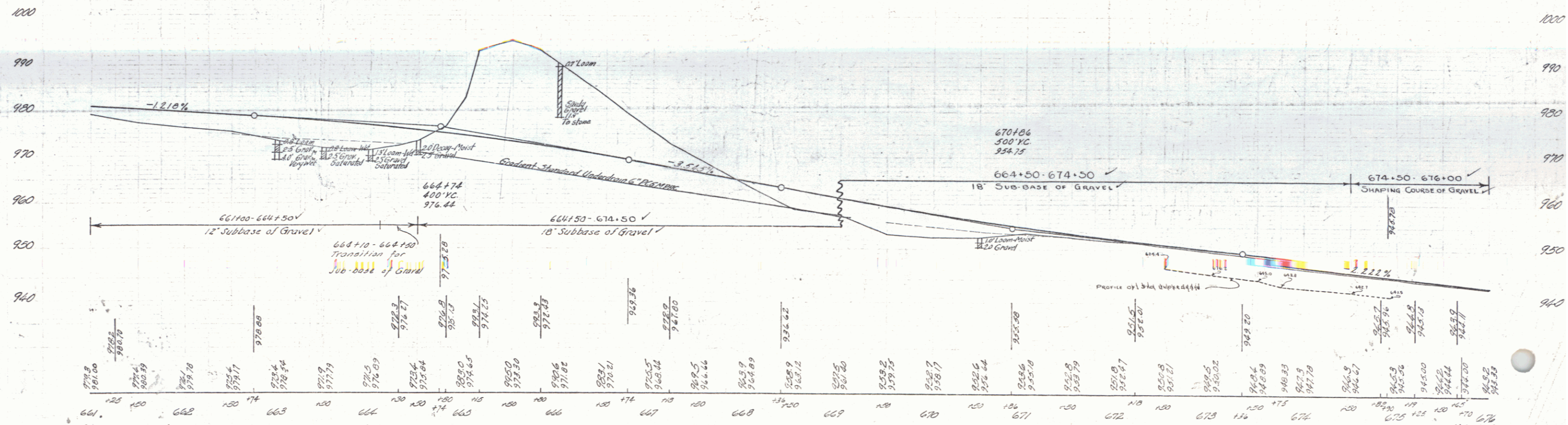
ROADWAY RESUMES
 BRIDGE ENDS
 STA 660140

655100 - 658150 Gravel Shaping Course
 658150 - 660108 12" Subbase of Gravel
 660140 - 661100 12" Subbase of Gravel

997.1	996.3	995.0	994.7	993.4	992.0	991.7	990.5	989.0	986.4	985.1	983.7	982.3	981.2	980.6	979.3
998.6	998.5	997.5	996.7	995.4	993.1	992.8	991.5	990.0	987.4	986.1	984.7	983.6	982.5	981.9	980.6
653	654	655	656	657	658	659	660	661							

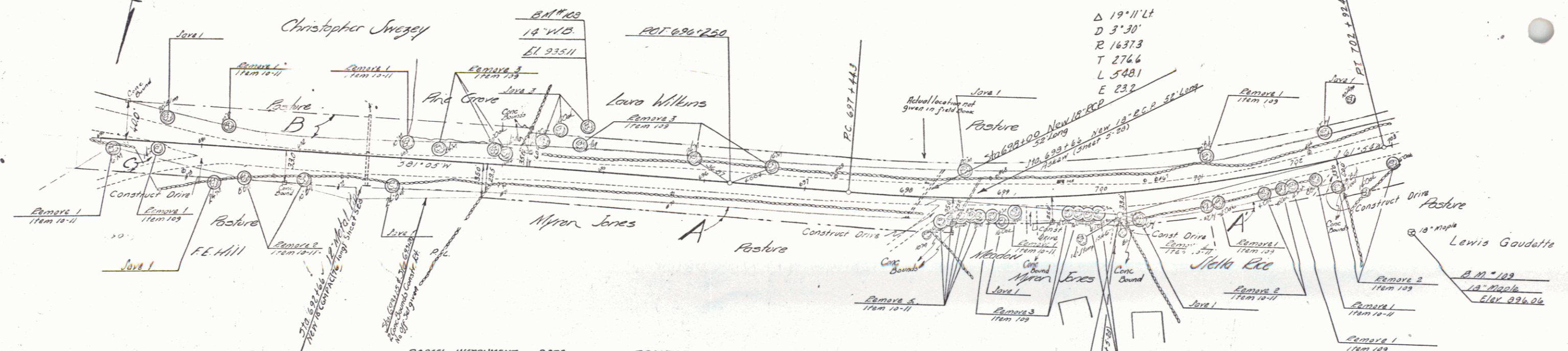


PARCEL INSTRUMENT	DATE	GRANTOR	GRANTEE	RECORDED	REMARKS
A	W.D. 10-31-39	HUGH SMITH	ST. OF VT	BOOK 143 PAGE 114-39	2 CULV
A'	W.D. 10-31-39	FRED E. L. HERVIE HILL	ST. OF VT	40 176 11-14-39	
B	W.D. 8-30-39	THOMAS E. L. BURTRICE & SMITH	ST. OF VT	40 115 9-28-39	1 CULV

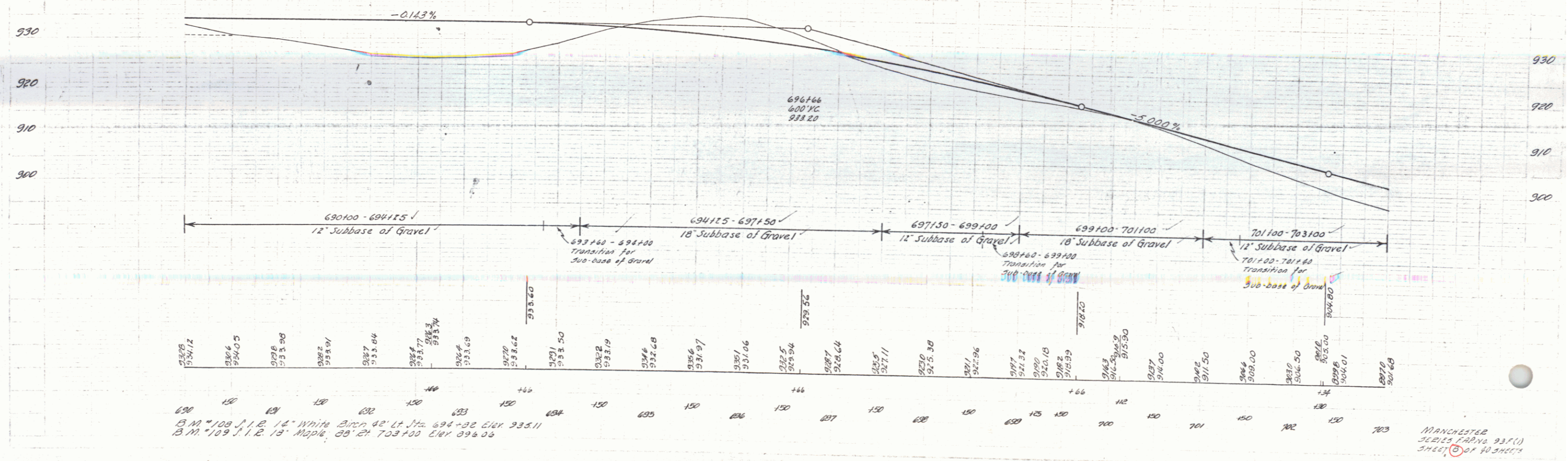


B.M. #105D Spike in Root of 18" Apple 38 feet left Sta. 669+60 Elev. 654.57

MANCHESTER
SHEET 1 OF 2 SHEETS



PARCEL	INTRUMENT	DATE	GRANTOR	GRANTEE	RECORDED MANCHETTER	REMARK
B	V.D.	10-31-39	CHRISTOPHER SWEZEY Sr.	ST OF VT	BOOK PAGE DATE	PI 700-109
C	W.D.	10-31-39	FRED L HERVIEW HILL	ST OF VT	40 175 11-10-39	
A	Q.C.D.	3-18-40	MYRON JONES	ST OF VT	40 337 4-25-40	700-158
B'	Q.C.D.	3-18-40	STELLA EKE	ST OF VT	40 324 4-25-40	

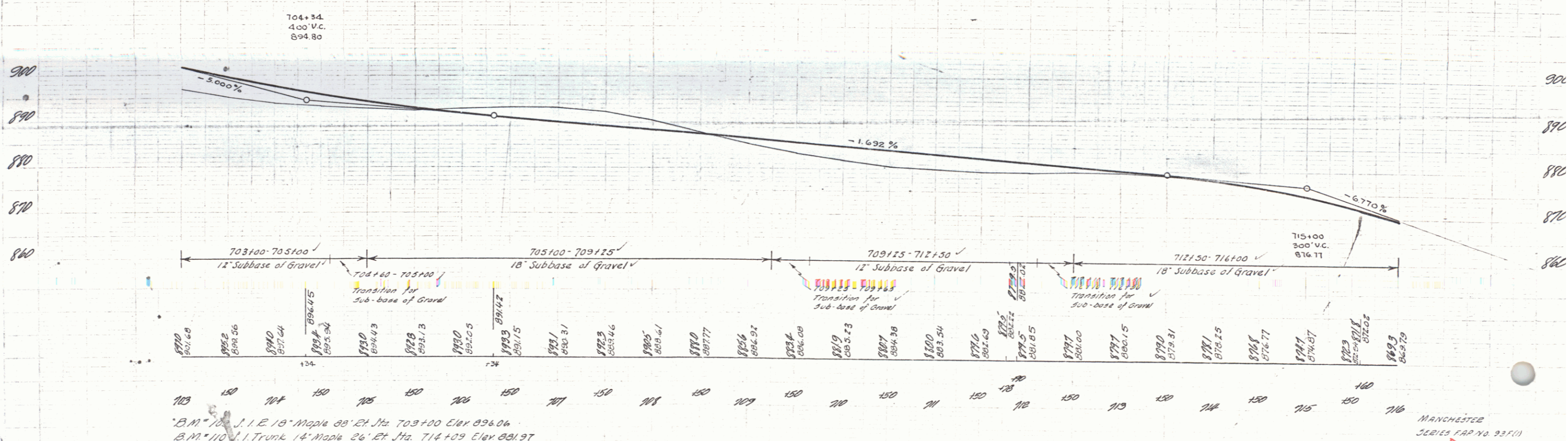
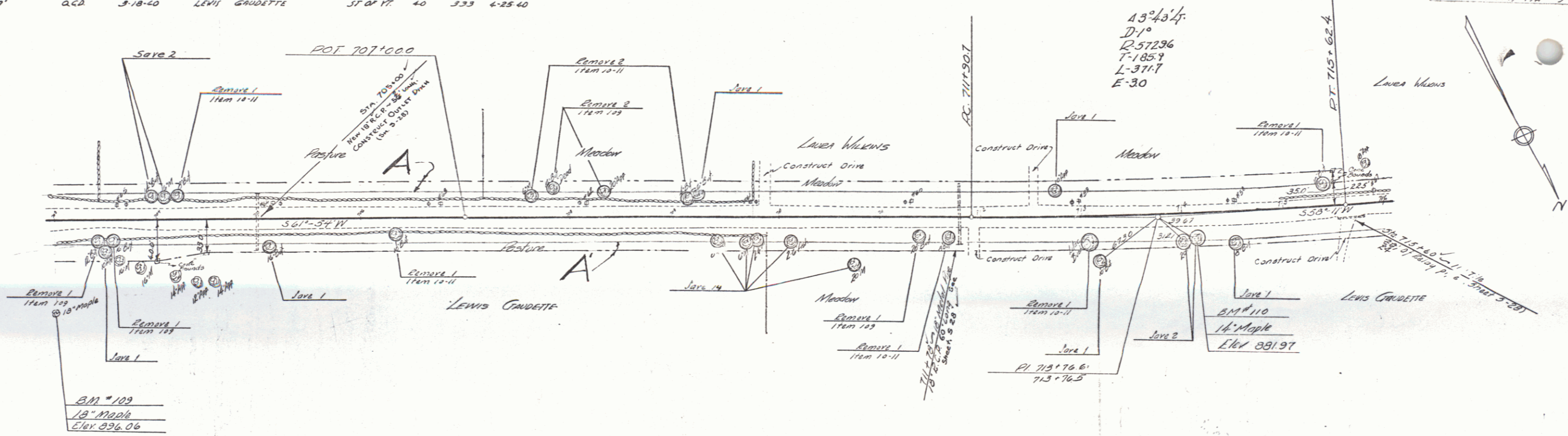


B.M. 109 J. 1 R. 14 White Birch 42' Lt Sta. 694+92 Elev. 935.11
 B.M. 109 J. 1 R. 13 Maple 88' 24' 703+00 Elev. 926.06

MANCHESTER
 24-25 PAVING 93.1(1)
 SHEET 9 OF 40 SHEETS

PARCEL	INSTRUMENT	DATE	GRANTOR	GRANTEE	RECORDED	REMARKS
A	QCD	3-18-40	LAURA WILKINS	ST OF VT	MANCHESTER	BASE PAGE DATE
B	QCD	3-18-40	LEWIS GAUDETTE	ST OF VT	MANCHESTER	BASE PAGE DATE
						40 333 4-25-40

MANCHESTER
SERIES MAP NO. 337(1)
SHEET 9 OF 40 SHEETS



BM 109 J.I.E. 18' Maple 23' Et. Sta. 703+00 Elev 896.06
 BM 110 J.I. Trunk 14' Maple 26' Et. Sta. 714+09 Elev 891.97

MANCHESTER
SERIES MAP NO. 337(1)
SHEET 9 OF 40 SHEETS

F. B. E. Milling Compact
 7B 3-15-40 11/14 40 #203 7-3-40

