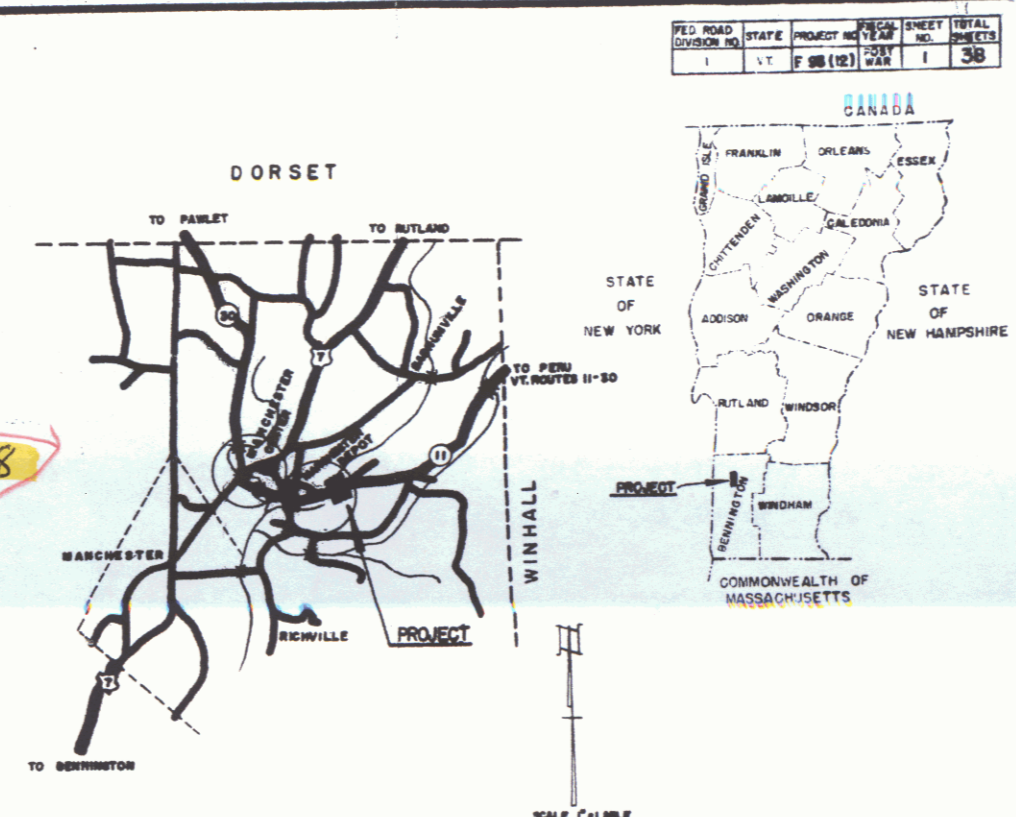


INDEX OF SHEETS

SHEET NO.	TITLE PAGE
1	TITLE PAGE
2	TYPICAL CROSS SECTIONS AND IMPROVEMENTS
3	BANKING AND WIDENING TABLES
4	QUANTITY SHEET (ITEMS)
5	QUANTITY SHEET (DRAINAGE)
6-7	EARTHWORK SHEETS
8-12	PLAN AND PROFILE SHEETS
13	PRELIMINARY INFORMATION SHEET
14	SUPERSTRUCTURE-PLAN-ELEVATION-SECTION
15	SUPERSTRUCTURE DETAIL
16	DETAILS OF ABUTMENT NO. 1
17	DETAILS OF ABUTMENT NO. 2
18	REINFORCING STEEL SCHEDULE
19	CONSTRUCTION DETAILS CD (DRAINAGE AND MARKERS)
20	CONSTRUCTION DETAILS CD (TYPICAL GRADINGS)
21	STANDARD STRUCTURE SHEET 388-45-PLANK GUARD RAIL
22	STANDARD STRUCTURE SHEET 307-45-DROP INLETS
23	STANDARD STRUCTURE SHEET 384-40-TORSE GABLE GUARD RAIL
24	STANDARD STRUCTURE SHEET 381-11-BARRICADES, SIGNS, AND LIGHTS
25	STANDARD STRUCTURE SHEET 381-20-DETAILS D, H, J, K, L, S
26-30	CROSS SECTIONS
37-38	CHANNEL SECTIONS

STATE OF VERMONT
DEPARTMENT OF HIGHWAYS
PROPOSED IMPROVEMENT
 FEDERAL AID PROJECT
TOWN OF MANCHESTER
 COUNTY OF BENNINGTON
VERMONT ROUTE 11
MANCHESTER-LONDONDERRY ROAD



BEGINNING AT A POINT APPROXIMATELY 2.220 MILES
 SOUTHWEST OF THE WINHALL-MANCHESTER TOWN LINE
 AND EXTENDING EASTERLY 1085.25 FEET, NOT INCLUDING RR CROSSING

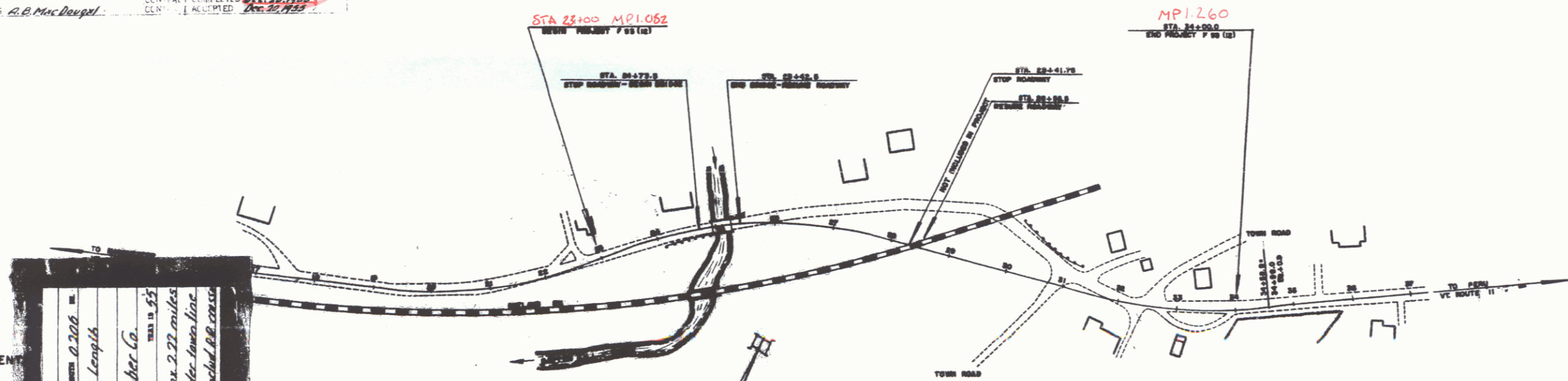
LENGTH OF BRIDGE 69.00 FEET = 0.013 MILE
 LENGTH OF ROADWAY 1016.25 FEET = 0.193 MILE
 LENGTH OF PROJECT 1085.25 FEET = 0.206 MILE

PROJECT NAME & NUMBER
MANCHESTER F 93(12)

PAVEMENT AREA
 57,000 SQ. YD.

CONTRACTOR: **W.H. MOORE CONSTRUCTION CO.**
 SUPERVISOR: **A.B. MAC DOUGAL**
 RECORD PLANS: **Dec. 30, 1955**

Project - Manchester F-93(12)
 Contractor - W.H. Moore Const. Lumber Co.
 Record Plans - A.B. Mac Dougal
 Const. Completed - Dec. 30, 1955



CONVENTIONS

COUNTY LINE	---
TOWN LINE	---
FENCE LINE	---
STONE WALL	---
UNSPURD FENCE	---
GUARD RAIL	---
TRAVELED HIGHWAY	---
RAILROAD	---
RETAINING WALL	---
CENTER LINE	---
SURVEY LINE	---
CULVERT	---
DROP INLET	---
TROLLEY RAIL	---

CURVE DATA

DEFLECTION OF ANGLES	A
NUMBER OF CURVES	D
RADIUS OF CURVE	R
WASSTON DISTANCE	T
LENGTH OF CURVE	L
EXTERNAL DISTANCE	E
POINT OF INTERSECTION	PI

SCALES

TITLE	1" = 100'
TYPICAL	1" = 50'
PLAN	1" = 50'
PROFILE HORIZONTAL	1" = 10'
PROFILE VERTICAL	1" = 10'
CROSS-SECTIONS	1" = 5'

Project No. F93(12)

NOTE: ANY OTHER INFORMATION CONCERNING FINAL PLANS, SPECIFICATIONS OR OTHER DETAILS RELATIVE TO THIS PROJECT MAY BE FOUND IN EITHER THE FIELD BOOK OR THE ESTIMATE FILE.

THESE PLANS ARE SUBJECT TO SUCH REVISIONS AS MAY BE REQUIRED BY THE BUREAU OF PUBLIC ROADS OR THE COMMISSIONER OF HIGHWAYS.

CONSTRUCTION IS TO BE CARRIED ON IN ACCORDANCE WITH THE PLANS AND THE STANDARD ROAD AND BRIDGE SPECIFICATIONS OF 1948, AS APPROVED JULY 29, 1949 BY THE BUREAU OF PUBLIC ROADS, HOLDING ALL SUBSEQUENT APPROVED REVISIONS AND SUCH REVISIONS, SPECIFICATIONS AND SPECIAL PROVISIONS AS ARE SUBMITTED WITH THE PLANS.

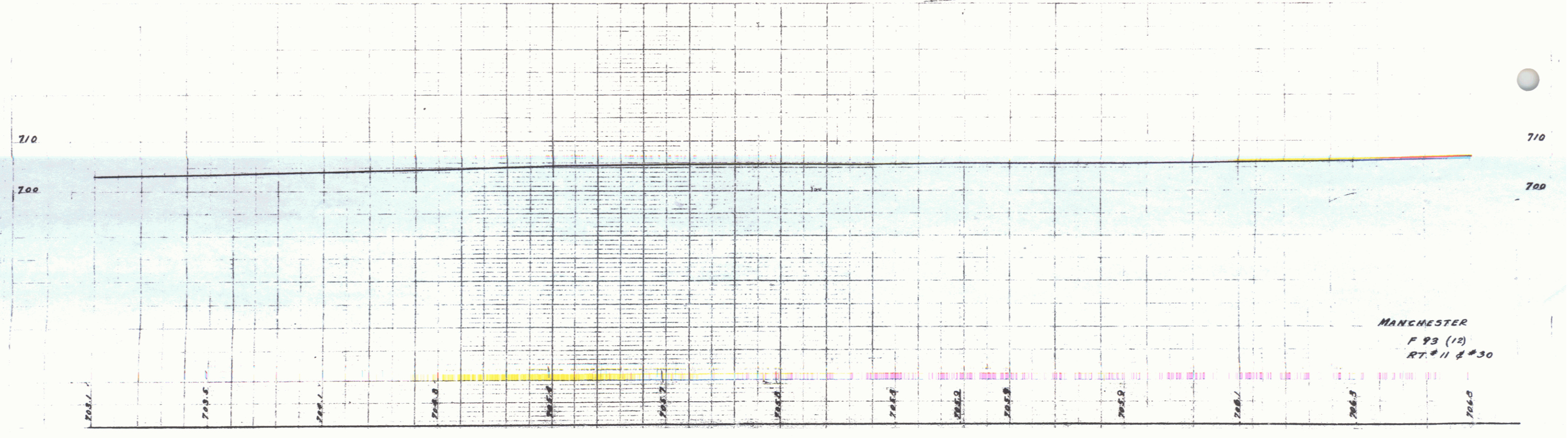
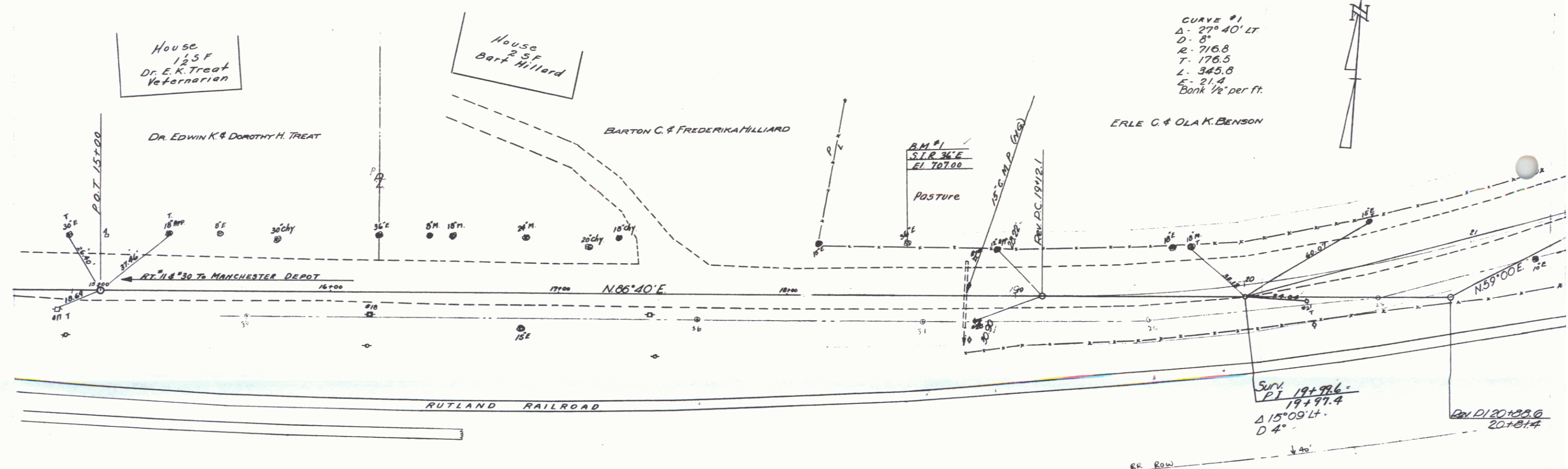
DEPARTMENT OF COMMERCE
 BUREAU OF PUBLIC ROADS

APPROVED: _____
 DISTRICT ENGINEER

DATE: _____

1-31
2-57
P.O.G.A.R.
Calloway

1-31
2-57
P.O.G.A.R.
Calloway



8

7

THREE CABLE GUARD
RAIL WITH STEEL POSTS
27+00-27+11 Lt
31+18-31+62 Appr Lt
31'18"-31'62" Lt

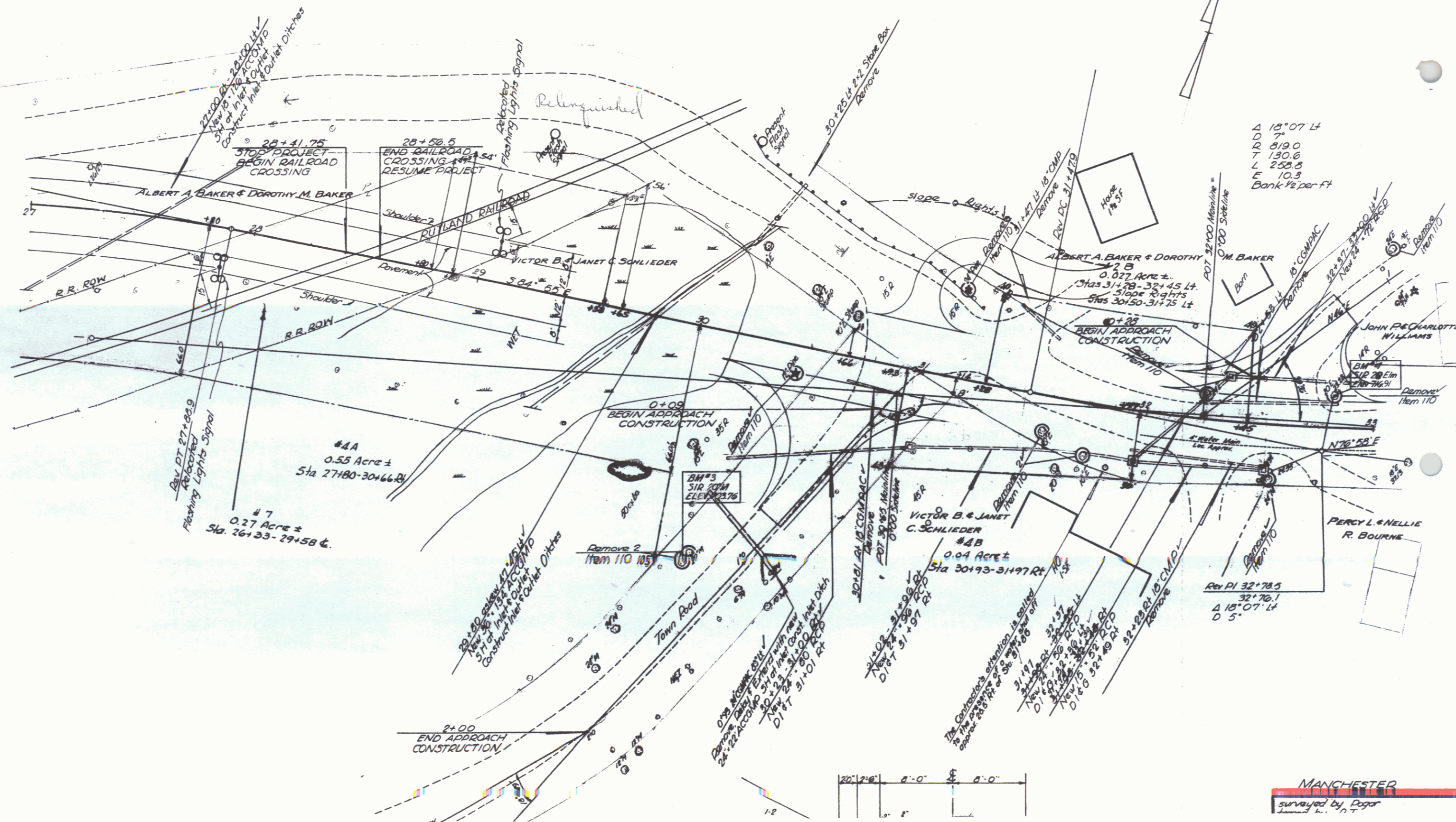
EXCAVATION & REMOVAL OF ROAD
SURFACE OF DISCONTINUED
HIGHWAYS
27+00-30+78 Lt

CONSTRUCT APPROACH
30+85-24 30'89" H
32+00 Lt

CONSTRUCT DRIVES
27+70 Lt 31'75 Lt
31+00 Lt 31'75 Lt
32+25 Lt

SODDING AND TOPSOIL
31+00 31+75 Lt
31+40 32+22 Lt
32+50 32+72 Lt
32+80 33+00 Lt
32+80 Lt 0+05 Appr Rt

REMOVAL & DISPOSAL OF
PRESENT GUARD RAIL
30+80-31+21 Lt
30'00 ~ 31'34 Lt



Δ 15° 07' Lt
D 7
D 819.0
T 130.6
L 258.8
E 10.3
Bank 1/2 per ft

Rev PI 32+78.5
32+70.1
D 5'

MANCHESTER
surveyed by Dejar
1971

10

