

THREE CABLE GUARD  
RAIL WITH STEEL POSTS  
27+00-27+11 Lt  
31+18-31+62 Appr Lt  
31'18" ~ 31'62" Lt

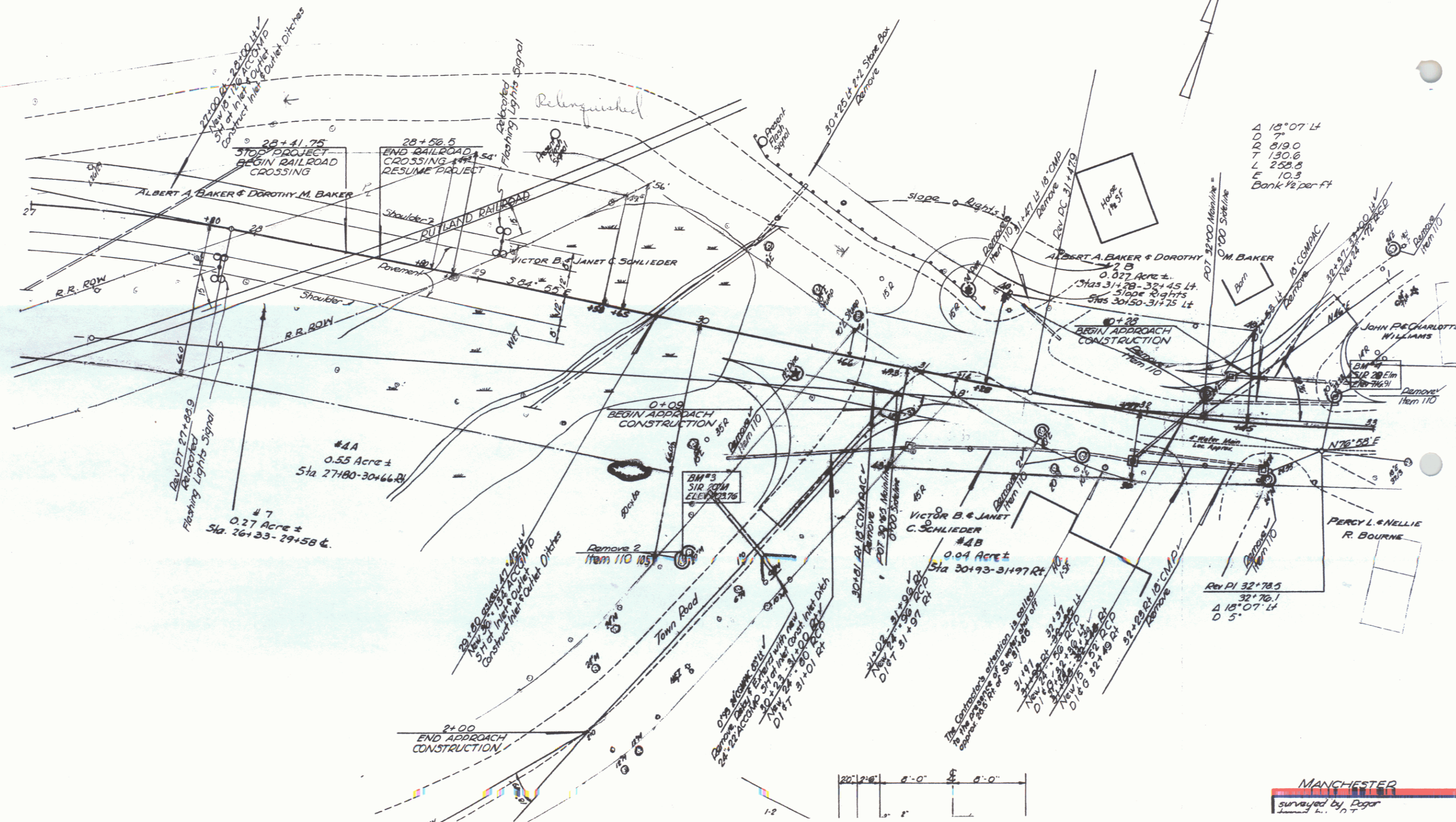
EXCAVATION & REMOVAL OF ROAD  
SURFACE OF DISCONTINUED  
HIGHWAYS  
27+00-30+78 Lt

CONSTRUCT APPROACH  
30+85-24 30'89" H  
32+00 Lt

CONSTRUCT DRIVES  
27+70 Lt 31'75 Lt  
31+00 Lt 31'75 Lt  
32+25 Lt

SODDING AND TOPSOIL  
31+00 31+75 Lt  
31+40 32+22 Lt  
32+50 32+72 Lt  
32+80 33+00 Lt  
32+80 Lt 0+05 Appr Rt

REMOVAL & DISPOSAL OF  
PRESENT GUARD RAIL  
30+80 ~ 31+21 Lt  
30'00 ~ 31'34 Lt



Δ 15°07' Lt  
D 7  
D 819.0  
T 130.6  
L 258.8  
E 10.3  
Bank 1/2 per ft

Rev PI 32+78.5  
32+70.1  
D 5'

MANCHESTER  
surveyed by Dejar  
1971

10