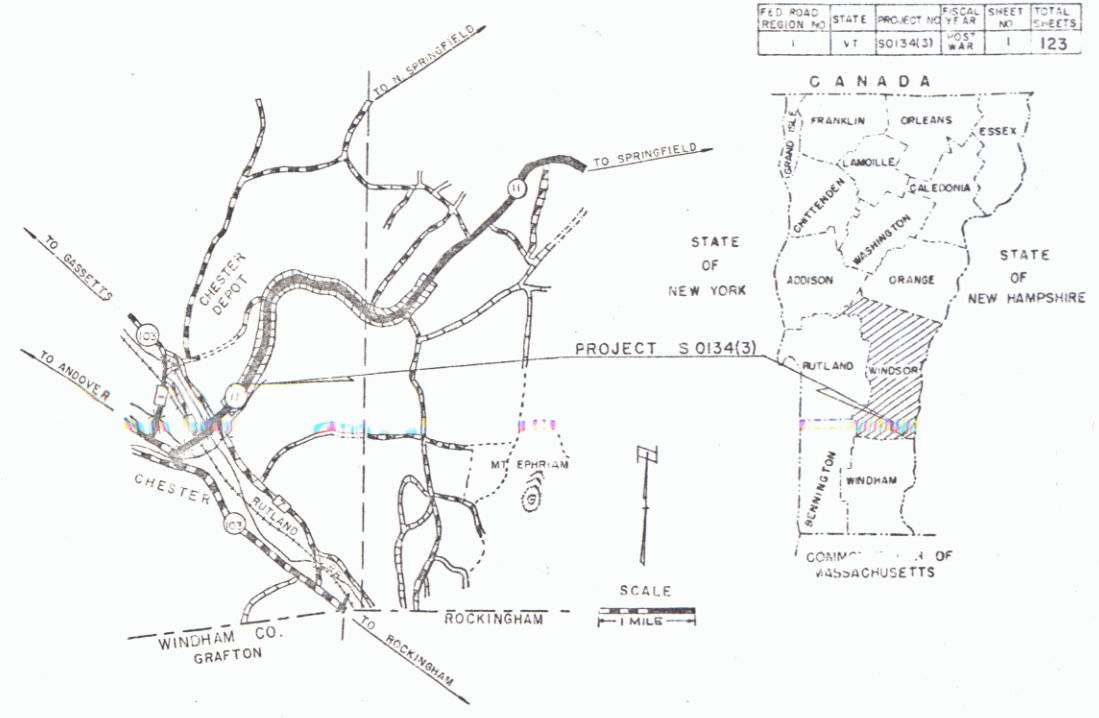


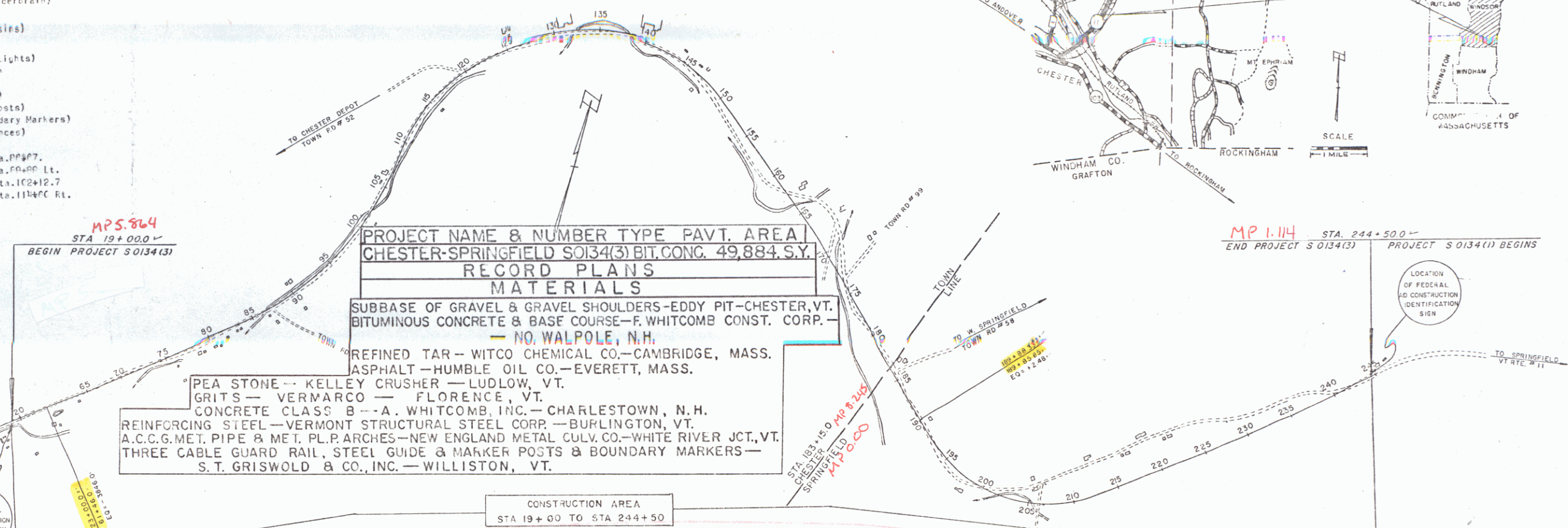
- INDEX OF SHEETS**
- Title Page
 - Typical Cross Section of Improvement
 - Quantity Sheet (Items)
 - Quantity Sheet (Drainage)
 - Earthwork Sheets
 - Standard Sheet A-1 (Sill Pock Excavation)
 - Standard Sheet B-1 (Parking Tables)
 - Standard Sheet B-2 (Typical Slope Grading, Turncuts)
 - Standard Sheet B-3 (Deep Excavation)
 - Standard Sheet B-4 (Slope Stabilization)
 - Standard Sheet B-5 (Depressed Ramp)
 - Standard Sheet B-6 (Driveway)
 - Standard Sheet C-1 (Curbs)
 - Standard Sheet D-1 (C.F.M., Headwalls, & Underdrain)
 - Standard Sheet E-1 (Treated Cutters)
 - Standard Sheet F-1 (Underdrain Flushing Basins)
 - Standard Sheet G-1 (Drop Inlets)
 - Standard Sheet H-1 (Barricades, Signs and Lights)
 - Standard Sheet I-1 (Federal Aid Construction Identification Signs)
 - Standard Sheet J-1 (Three Table Guard Rail)
 - Standard Sheet K-1 (Marker Posts & Guide Posts)
 - Standard Sheet L-1 (Project Markers & Boundary Markers)
 - Standard Sheet M-1 (Minimum Planting Distances)
 - Plan and Profile Sheets
 - Details of 12" x 12" x 12" CHPP Arch @ Sta. P.P. #7.
 - Details of 12" x 12" x 12" CHPP Arch @ Sta. P.P. #8.
 - Details of 12" x 12" x 12" CHPP Arch @ Sta. P.P. #9.
 - Details of 12" x 12" x 12" CHPP Arch @ Sta. P.P. #10.
 - Details of 12" x 12" x 12" CHPP Arch @ Sta. P.P. #11.
 - Details of 12" x 12" x 12" CHPP Arch @ Sta. P.P. #12.
 - Details of 12" x 12" x 12" CHPP Arch @ Sta. P.P. #13.
 - Details of 12" x 12" x 12" CHPP Arch @ Sta. P.P. #14.
 - Details of 12" x 12" x 12" CHPP Arch @ Sta. P.P. #15.
 - Details of 12" x 12" x 12" CHPP Arch @ Sta. P.P. #16.
 - Details of 12" x 12" x 12" CHPP Arch @ Sta. P.P. #17.
 - Details of 12" x 12" x 12" CHPP Arch @ Sta. P.P. #18.
 - Details of 12" x 12" x 12" CHPP Arch @ Sta. P.P. #19.
 - Details of 12" x 12" x 12" CHPP Arch @ Sta. P.P. #20.
 - Details of 12" x 12" x 12" CHPP Arch @ Sta. P.P. #21.
 - Details of 12" x 12" x 12" CHPP Arch @ Sta. P.P. #22.
 - Details of 12" x 12" x 12" CHPP Arch @ Sta. P.P. #23.
 - Details of 12" x 12" x 12" CHPP Arch @ Sta. P.P. #24.
 - Details of 12" x 12" x 12" CHPP Arch @ Sta. P.P. #25.
 - Details of 12" x 12" x 12" CHPP Arch @ Sta. P.P. #26.
 - Details of 12" x 12" x 12" CHPP Arch @ Sta. P.P. #27.
 - Details of 12" x 12" x 12" CHPP Arch @ Sta. P.P. #28.
 - Details of 12" x 12" x 12" CHPP Arch @ Sta. P.P. #29.
 - Details of 12" x 12" x 12" CHPP Arch @ Sta. P.P. #30.
 - Details of 12" x 12" x 12" CHPP Arch @ Sta. P.P. #31.
 - Details of 12" x 12" x 12" CHPP Arch @ Sta. P.P. #32.
 - Details of 12" x 12" x 12" CHPP Arch @ Sta. P.P. #33.
 - Details of 12" x 12" x 12" CHPP Arch @ Sta. P.P. #34.
 - Details of 12" x 12" x 12" CHPP Arch @ Sta. P.P. #35.
 - Details of 12" x 12" x 12" CHPP Arch @ Sta. P.P. #36.
 - Details of 12" x 12" x 12" CHPP Arch @ Sta. P.P. #37.
 - Details of 12" x 12" x 12" CHPP Arch @ Sta. P.P. #38.
 - Details of 12" x 12" x 12" CHPP Arch @ Sta. P.P. #39.
 - Details of 12" x 12" x 12" CHPP Arch @ Sta. P.P. #40.
 - Details of 12" x 12" x 12" CHPP Arch @ Sta. P.P. #41.
 - Details of 12" x 12" x 12" CHPP Arch @ Sta. P.P. #42.
 - Details of 12" x 12" x 12" CHPP Arch @ Sta. P.P. #43.
 - Details of 12" x 12" x 12" CHPP Arch @ Sta. P.P. #44.
 - Details of 12" x 12" x 12" CHPP Arch @ Sta. P.P. #45.
 - Details of 12" x 12" x 12" CHPP Arch @ Sta. P.P. #46.
 - Details of 12" x 12" x 12" CHPP Arch @ Sta. P.P. #47.
 - Details of 12" x 12" x 12" CHPP Arch @ Sta. P.P. #48.
 - Details of 12" x 12" x 12" CHPP Arch @ Sta. P.P. #49.
 - Details of 12" x 12" x 12" CHPP Arch @ Sta. P.P. #50.
 - Details of 12" x 12" x 12" CHPP Arch @ Sta. P.P. #51.
 - Details of 12" x 12" x 12" CHPP Arch @ Sta. P.P. #52.
 - Details of 12" x 12" x 12" CHPP Arch @ Sta. P.P. #53.
 - Details of 12" x 12" x 12" CHPP Arch @ Sta. P.P. #54.
 - Details of 12" x 12" x 12" CHPP Arch @ Sta. P.P. #55.
 - Details of 12" x 12" x 12" CHPP Arch @ Sta. P.P. #56.
 - Details of 12" x 12" x 12" CHPP Arch @ Sta. P.P. #57.
 - Details of 12" x 12" x 12" CHPP Arch @ Sta. P.P. #58.
 - Details of 12" x 12" x 12" CHPP Arch @ Sta. P.P. #59.
 - Details of 12" x 12" x 12" CHPP Arch @ Sta. P.P. #60.
 - Details of 12" x 12" x 12" CHPP Arch @ Sta. P.P. #61.
 - Details of 12" x 12" x 12" CHPP Arch @ Sta. P.P. #62.
 - Details of 12" x 12" x 12" CHPP Arch @ Sta. P.P. #63.
 - Details of 12" x 12" x 12" CHPP Arch @ Sta. P.P. #64.
 - Details of 12" x 12" x 12" CHPP Arch @ Sta. P.P. #65.
 - Details of 12" x 12" x 12" CHPP Arch @ Sta. P.P. #66.
 - Details of 12" x 12" x 12" CHPP Arch @ Sta. P.P. #67.
 - Details of 12" x 12" x 12" CHPP Arch @ Sta. P.P. #68.
 - Details of 12" x 12" x 12" CHPP Arch @ Sta. P.P. #69.
 - Details of 12" x 12" x 12" CHPP Arch @ Sta. P.P. #70.
 - Details of 12" x 12" x 12" CHPP Arch @ Sta. P.P. #71.
 - Details of 12" x 12" x 12" CHPP Arch @ Sta. P.P. #72.
 - Details of 12" x 12" x 12" CHPP Arch @ Sta. P.P. #73.
 - Details of 12" x 12" x 12" CHPP Arch @ Sta. P.P. #74.
 - Details of 12" x 12" x 12" CHPP Arch @ Sta. P.P. #75.
 - Details of 12" x 12" x 12" CHPP Arch @ Sta. P.P. #76.
 - Details of 12" x 12" x 12" CHPP Arch @ Sta. P.P. #77.
 - Details of 12" x 12" x 12" CHPP Arch @ Sta. P.P. #78.
 - Details of 12" x 12" x 12" CHPP Arch @ Sta. P.P. #79.
 - Details of 12" x 12" x 12" CHPP Arch @ Sta. P.P. #80.
 - Details of 12" x 12" x 12" CHPP Arch @ Sta. P.P. #81.
 - Details of 12" x 12" x 12" CHPP Arch @ Sta. P.P. #82.
 - Details of 12" x 12" x 12" CHPP Arch @ Sta. P.P. #83.
 - Details of 12" x 12" x 12" CHPP Arch @ Sta. P.P. #84.
 - Details of 12" x 12" x 12" CHPP Arch @ Sta. P.P. #85.
 - Details of 12" x 12" x 12" CHPP Arch @ Sta. P.P. #86.
 - Details of 12" x 12" x 12" CHPP Arch @ Sta. P.P. #87.
 - Details of 12" x 12" x 12" CHPP Arch @ Sta. P.P. #88.
 - Details of 12" x 12" x 12" CHPP Arch @ Sta. P.P. #89.
 - Details of 12" x 12" x 12" CHPP Arch @ Sta. P.P. #90.
 - Details of 12" x 12" x 12" CHPP Arch @ Sta. P.P. #91.
 - Details of 12" x 12" x 12" CHPP Arch @ Sta. P.P. #92.
 - Details of 12" x 12" x 12" CHPP Arch @ Sta. P.P. #93.
 - Details of 12" x 12" x 12" CHPP Arch @ Sta. P.P. #94.
 - Details of 12" x 12" x 12" CHPP Arch @ Sta. P.P. #95.
 - Details of 12" x 12" x 12" CHPP Arch @ Sta. P.P. #96.
 - Details of 12" x 12" x 12" CHPP Arch @ Sta. P.P. #97.
 - Details of 12" x 12" x 12" CHPP Arch @ Sta. P.P. #98.
 - Details of 12" x 12" x 12" CHPP Arch @ Sta. P.P. #99.
 - Details of 12" x 12" x 12" CHPP Arch @ Sta. P.P. #100.

STATE OF VERMONT
DEPARTMENT OF HIGHWAYS
PROPOSED IMPROVEMENT

FEDERAL AID SECONDARY PROJECT



BENCH MARKS BASED ON U.S.G.S. ELEVATIONS
Sheets added in Final
4 Final Earth work Sheets
3 Underdrain Sheets
2 Water Pipe Sleeves Sheets
34 Drainage Sheets
11 Bridge Sheets
2 Striping Sheets



PROJECT NAME & NUMBER TYPE PAVT. AREA
CHESTER-SPRINGFIELD S0134(3) BIT. CONC. 49,884 S.Y.
RECORD PLANS
MATERIALS

SUBBASE OF GRAVEL & GRAVEL SHOULDERS-EDDY PIT-CHESTER, VT.
BITUMINOUS CONCRETE & BASE COURSE-F. WHITCOMB CONST. CORP.-
NO. WALPOLE, N.H.
REFINED TAR-WITCO CHEMICAL CO.-CAMBRIDGE, MASS.
ASPHALT-HUMBLE OIL CO.-EVERETT, MASS.
PEA STONE-KELLEY CRUSHER-LUDLOW, VT.
GRITS-VERMARCO-FLORENCE, VT.
CONCRETE CLASS B--A. WHITCOMB, INC.-CHARLESTOWN, N.H.
REINFORCING STEEL-VERMONT STRUCTURAL STEEL CORP.-BURLINGTON, VT.
A.C.C.G. MET. PIPE & MET. PL. ARCHES-NEW ENGLAND METAL CULV. CO.-WHITE RIVER JCT., VT.
THREE CABLE GUARD RAIL, STEEL GUIDE & MARKER POSTS & BOUNDARY MARKERS-
S.T. GRISWOLD & CO., INC.-WILLISTON, VT.

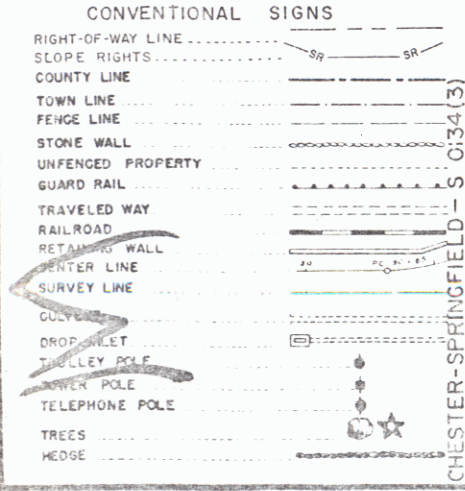
TOWNS OF CHESTER AND SPRINGFIELD

CONTRACTOR-S. V. ROSSI CONSTRUCTION CO. INC.
TORRINGTON, CONN.
RESIDENT ENGINEER-FRANK ALDRICH.
INSPECTORS-R. SEAVEY & D. LATHROP.
RECORD PLANS-FRANK ALDRICH
CONTRACT DATED-MAY 19, 1964.
STARTED-JUNE 8, 1964.
COMPLETED-OCTOBER 1, 1965.
ACCEPTED-OCTOBER 1, 1965.

COUNTY OF WINDSOR
VERMONT ROUTE #11
RINGFIELD ROAD

APPROXIMATELY 2.38 MILES,
WESTERLY 2.38 MILES,
EASTERLY 3.543 MILES.
18706.48 FEET = 3.543 MILES

ST	1400-1300
DT	2000-1850
HV	250-270
D	60%
T	6%
V	60 MPH



APPROVED: [Signatures] DATE: 3/6/63
APPROVED: [Signatures] DATE: 3/6/63
APPROVED: [Signatures] DATE: 1-31-63
APPROVED: [Signatures] DATE: 3/6/63
APPROVED: [Signatures] DATE: 3/6/63
PROJECT S NO 0134(3)
SHEET 1 OF SHEETS 123

RIGHT-OF-WAY DIVISION
TOWN FILE
PERPETUAL
Town of [Handwritten] 411
(To Be Returned To R.O.W. Division)

mm 0588-0825
0000 0117

THESE PLANS ARE SUBJECT TO SUCH REVISIONS AS MAY BE
REQUIRED BY THE BUREAU OF PUBLIC ROADS OR THE COMMISSIONER
OF HIGHWAYS.
CONSTRUCTION IS TO BE CARRIED ON IN ACCORDANCE WITH
THE PLANS AND THE STANDARD SPECIFICATIONS FOR HIGHWAY AND BRIDGE
CONSTRUCTION OF JANUARY 1956 SUBMITTED TO THE BUREAU OF
PUBLIC ROADS AS APPROVED JULY 5, 1956, INCLUDING ALL SUBSEQUENT
APPROVED REVISIONS AND SUCH REVISED SPECIFICATIONS AND SPECIAL
PROVISIONS AS ARE SUBMITTED WITH THE PLANS.

DEPARTMENT OF COMMERCE
BUREAU OF PUBLIC ROADS
APPROVED

BITUMINOUS BUTTER
Lt Rt
16+60-19+46

CONSTRUCT DRIVE
Lt Rt
19+82

UNCLASSIFIED CHANNEL
EXCAVATION
Lt Rt
17+25-19+56
50 10

STONE FILL FOR SLOPE
PROTECTION
Lt Rt
17+25-19+56
50 10

THREE CABLE GUARD RAIL
WITH STEEL POSTS
Lt Rt
17+18-19+58
18 11

GENERAL NOTES
1. All drives will be constructed with a 12' minimum width & a 15' minimum flare radius
2. Sub-base of Gravel, Item 201-A shall be used to stabilize cut slopes where indicated on the plans or as directed by the Engineer.

PARCEL : 1 A.B. STA 16+00-67+20
OWNER : HELEN K. ASPDEN & JAMES K. ASPDEN
TAKING : 2.741 REM. #2A2
RIGHTS : None
TITLE TAKEN : COND. O. 4/15/64
RECORDED : CHESTER BK. #1 PG. 43-59 D. 4/17/64

STA 19+00.0
BEGIN PROJECT
S 0134(3)
Construct Satisfactory Approach

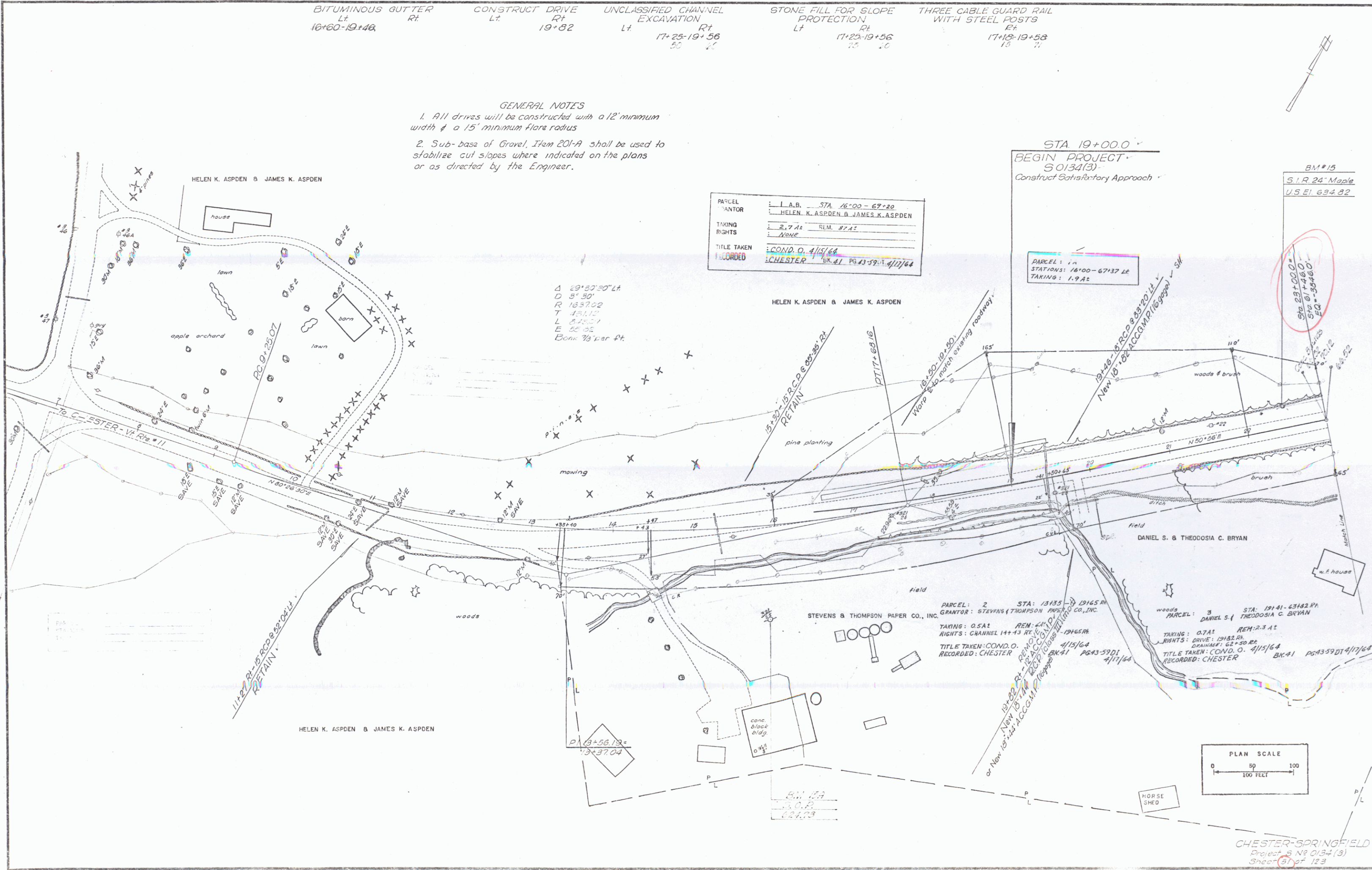
BM #15
S.I.R. 24 Maple
U.S.E.I. 69482

PARCEL : 1A
STATIONS : 16+00-67+20
TAKING : 1.9A2

Δ 29° 57' 20" Lt
D 5' 30"
R 1657.02
T 151.12
L 621.57
E 56.02
Bench 76' car Pt.

HELEN K. ASPDEN & JAMES K. ASPDEN

10-81
1-82
1-82
Checked by
Drawn by
CEH
Prepared by



CHESTER-SPRINGFIELD
Project S N 0134(3)
Sheet 37 of 123

DEMOLITION AND REMOVAL OF BUILDING
 LT
 63+50 (7)

CONSTRUCT DRIVE
 LT
 60+00
 62+50
 RT
 61+75
 76+24
 67+50
 70+75

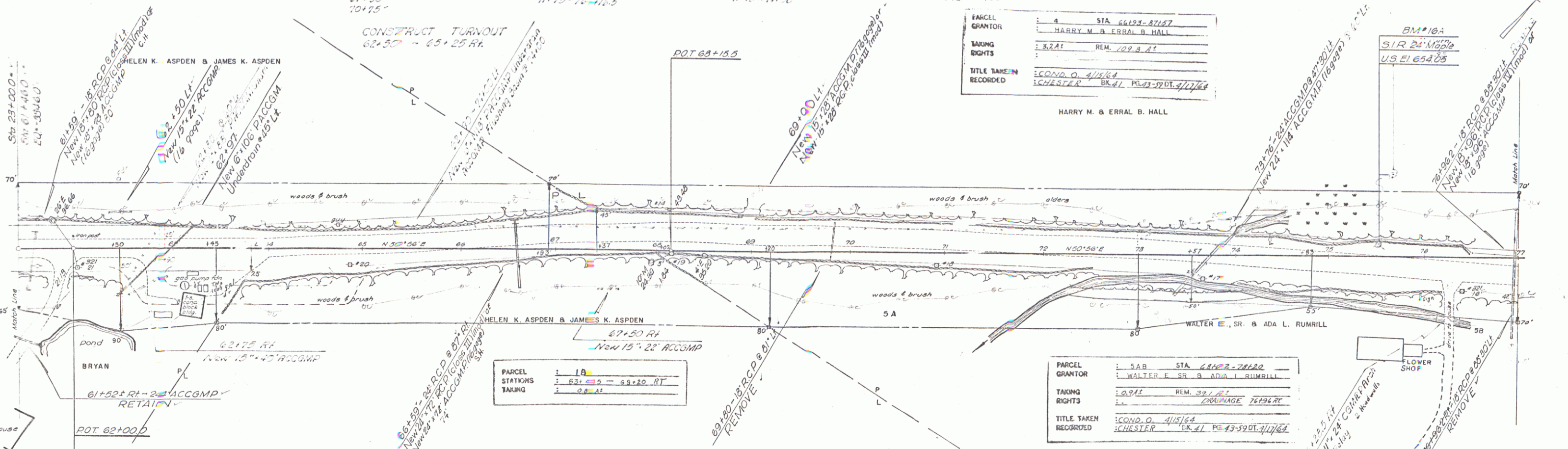
UNCLASSIFIED CHANNEL EXCAVATION
 LT
 74+57.4+45
 RT
 72+25-74+25
 71+75-75+10.5

STONE FILL FOR SLOPE PROTECTION
 RT
 72+25-74+25
 71+75-75+10

THREE CABLE GUARD RAIL WITH STEEL POSTS
 LT
 72+25-75+13

DRILLING AND BLASTING OF SOLID ROCK SUBGRADE (MOD)
 69+20-70+25
 62+55-69+50

61+75-73
 75+25-77



PARCEL GRANTOR	STA 66154-87167
TAKING RIGHTS	HARRY M. & ERRAL B. HALL
TITLE TAKEN/RECORDED	COND. O. 4/15/64 SCHIEFER BK. 41 PG. 59 DT. 4/17/64

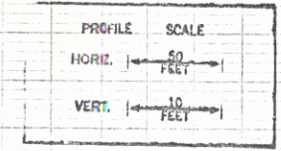
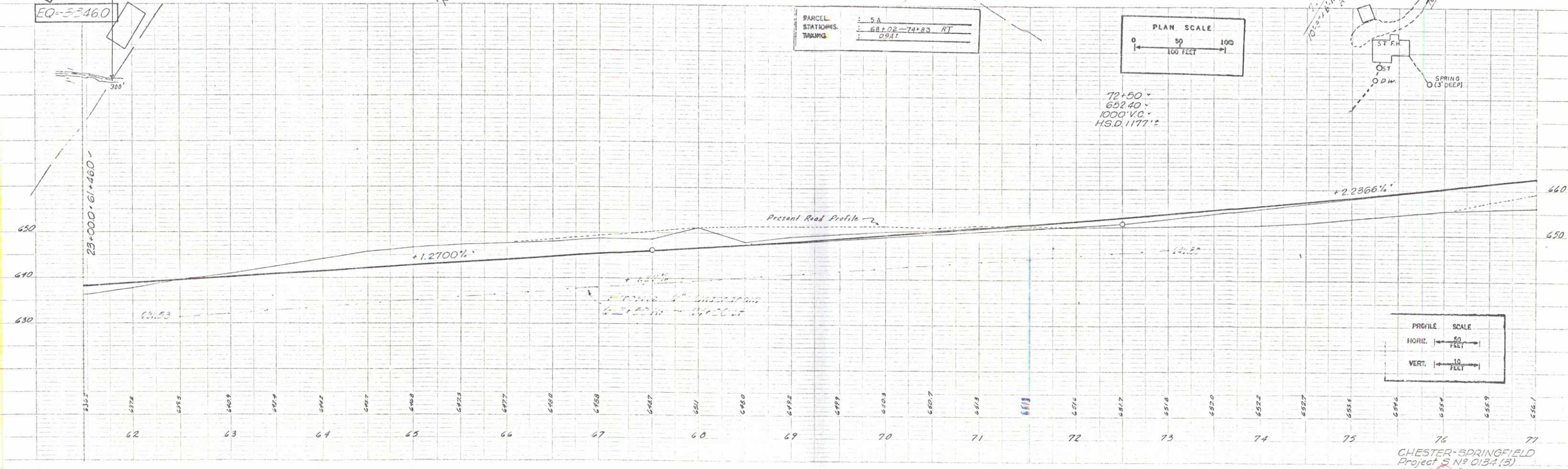
PARCEL STATISTICS	1A
TAKING	62+50 - 69+20 RT 0.8 AT

PARCEL GRANTOR	STA 68122-78120
TAKING RIGHTS	WALTER E. SR. & ADA L. RUMILL
TITLE TAKEN/RECORDED	COND. O. 4/15/64 SCHIEFER BK. 41 PG. 59 DT. 4/17/64

PARCEL STATISTICS	5A
TAKING	68+22 - 74+23 RT 0.9 AT

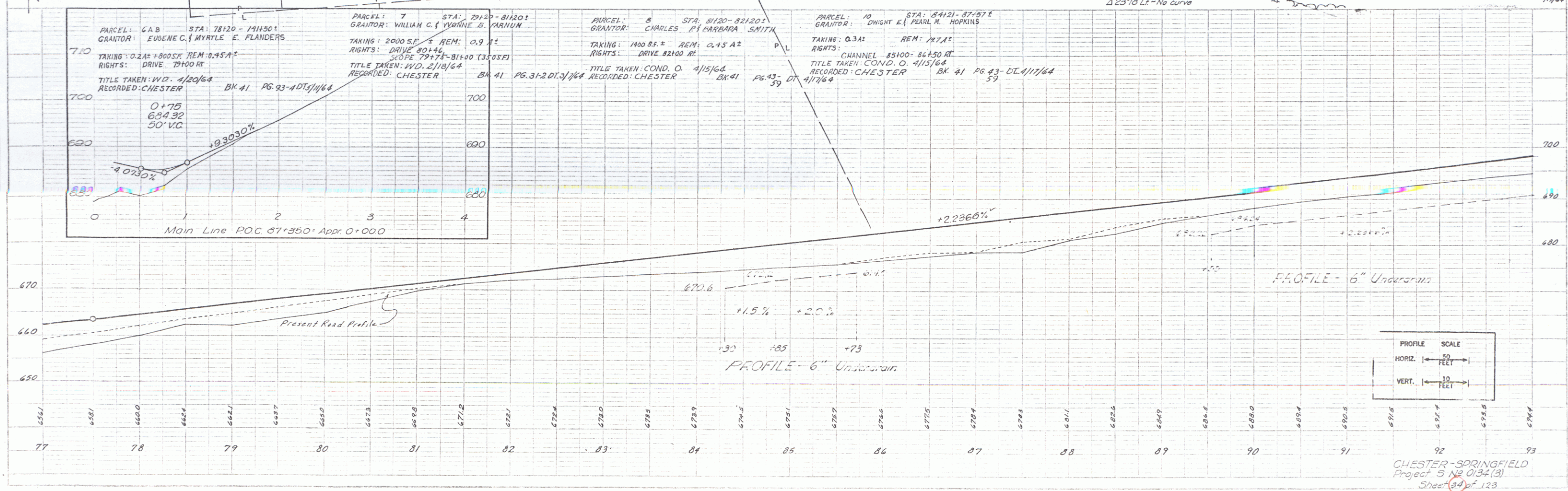
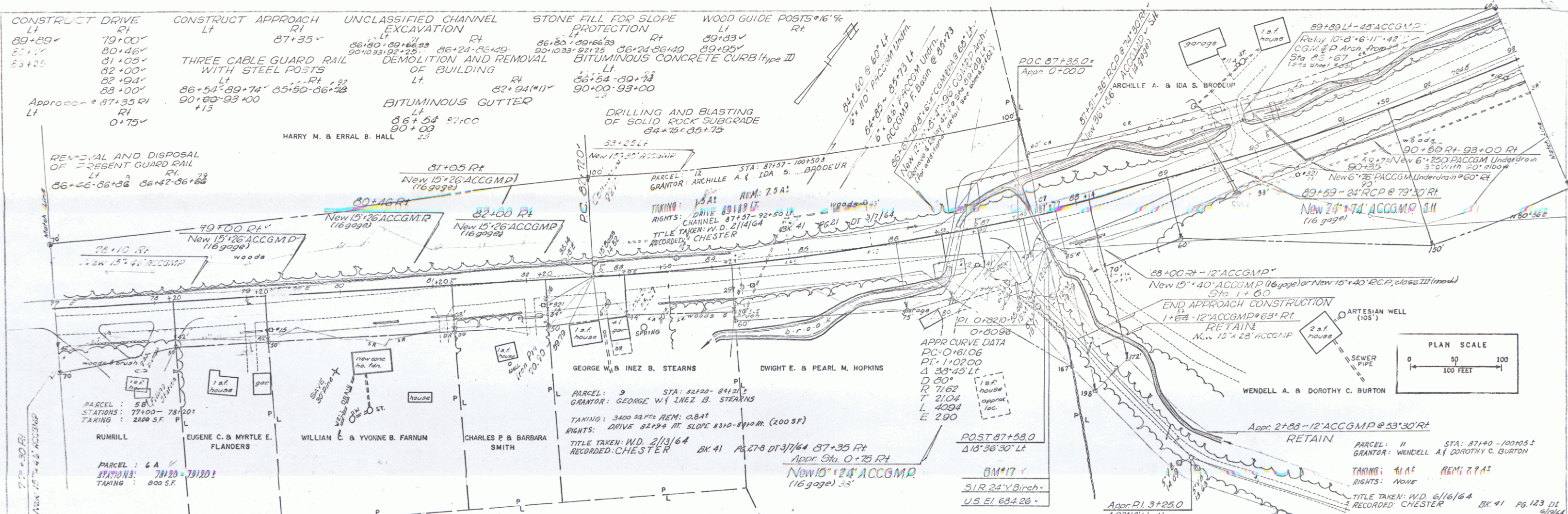


72+50 -
 652.40 -
 1000 V.C. -
 H.S.D. 1177'

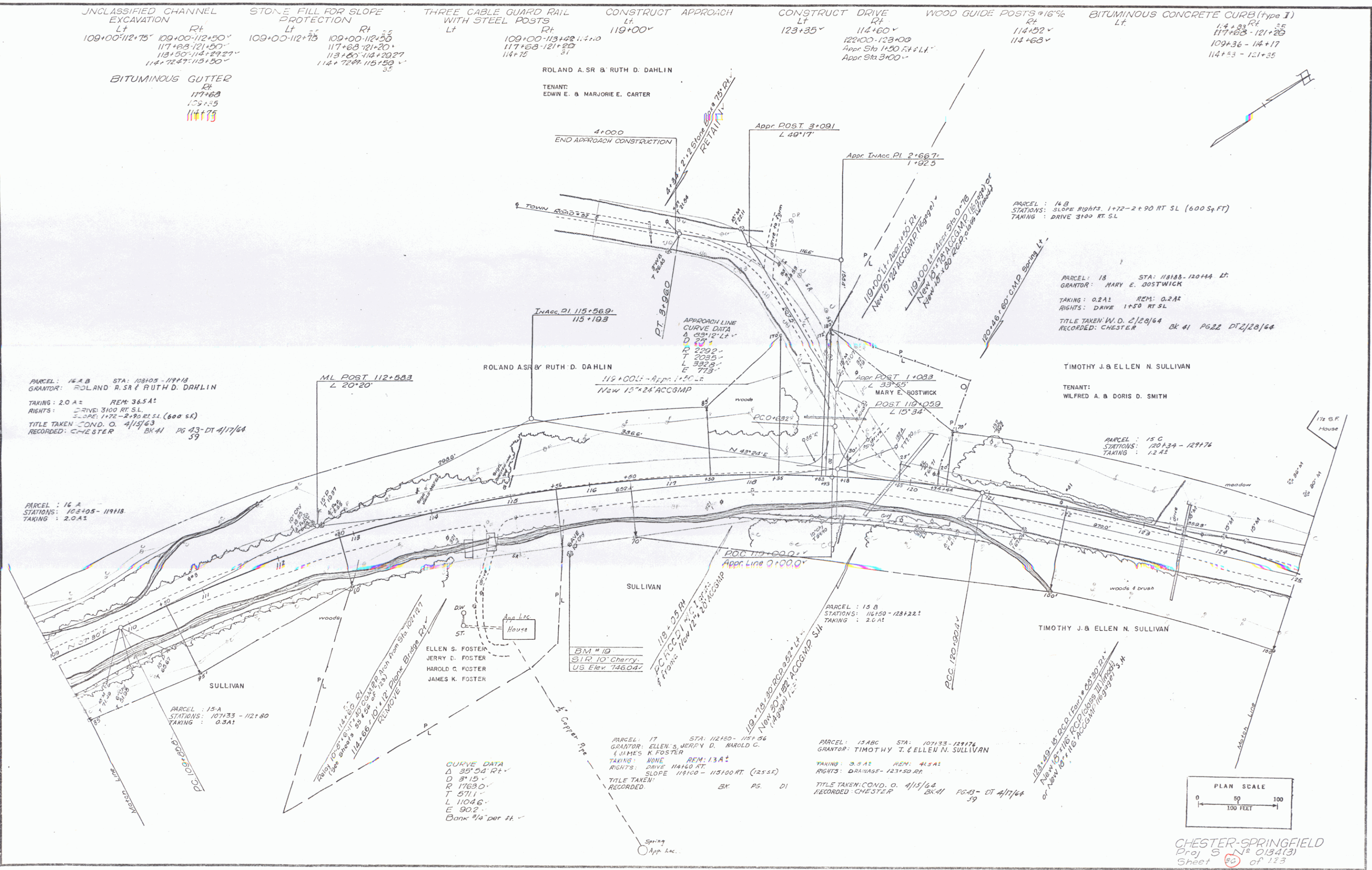


CHESTER-SPRINGFIELD
 Project S N# 0134 (3)
 Sheet 63 of 123

PLAN
 DATE: 10/24/64
 DRAWN BY: M. L. LUTHELMAN
 CHECKED BY: C. E. H.



PLAN	REVISIONS	DATE	BY
	1		CHAMBERLAIN
	2		CHAMBERLAIN
	3		CHAMBERLAIN
	4		CHAMBERLAIN
	5		CHAMBERLAIN



UNCLASSIFIED CHANNEL EXCAVATION
 LT 109+00-112+75 RT 109+00-112+50
 117+03-121+50
 118+30-114+29.27
 114+72.27-115+50

STONE FILL FOR SLOPE PROTECTION
 LT 109+00-112+75 RT 109+00-112+50
 117+03-121+50
 118+30-114+29.27
 114+72.27-115+50

THREE CABLE GUARD RAIL WITH STEEL POSTS
 LT 109+00-113+22.11 RT 109+00-113+22.11
 117+03-121+50
 114+75

CONSTRUCT APPROACH
 LT 119+00

CONSTRUCT DRIVE
 LT 123+35 RT 114+60
 122+00-123+00
 Appr Sta 1+50 RT & LT
 Appr Sta 3+00

WOOD GUIDE POSTS @ 16%
 RT 114+02 RT 114+63

BITUMINOUS CONCRETE CURB (Type I)
 LT 114+03 RT 117+03
 109+36-114+17
 114+53-121+35

BITUMINOUS GUTTER
 RT 117+03
 109+35
 114+75

ROLAND A. SR & RUTH D. DAHLIN
 TENANT:
 EDWIN E. & MARJORIE E. CARTER

4+000
 END APPROACH CONSTRUCTION

Appr POST 3+091
 L 49'17"

Appr Inacc PI 2+667
 1+925

PARCEL: 14 B
 STATIONS: SLOPE RIGHTS 1+72-2+90 RT SL (600 Sq FT)
 TAKING: DRIVE 3100 RT SL

PARCEL: 18
 STA: 118185-120+44 LT
 GRANTOR: MARY E. BOSTWICK
 TAKING: 0.2A1 REM: 0.2A2
 RIGHTS: DRIVE 1+50 RT SL
 TITLE TAKEN W.D. 2/20/64 BK 41 PG 22 DT 2/20/64
 RECORDED: CHESTER

TIMOTHY J. & ELLEN N. SULLIVAN
 TENANT:
 WILFRED A. & DORIS D. SMITH

PARCEL: 15 C
 STATIONS: 120+34-121+74
 TAKING: 1.2A1

PARCEL: 14 A B
 STA: 108102-111+14
 GRANTOR: ROLAND A. SR & RUTH D. DAHLIN
 TAKING: 2.0 A2 REM: 3.65 A1
 RIGHTS: DRIVE 3100 RT SL
 SLOPE: 1+72-2+90 RT SL (600 sq ft)
 TITLE TAKEN COND. O. 4/15/63
 RECORDED: CHESTER BK 41 PG 43-DT 4/17/64

PARCEL: 16 A
 STATIONS: 102+05-111+18
 TAKING: 2.0 A3

ML POST 112+603
 L 20'20"

ROLAND A. SR & RUTH D. DAHLIN
 115+00 LT - Appr 1+20 RT
 New 15'x24' ACCOMP

Appr POST 1+083
 L 33'35"

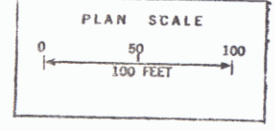
POST 119+059
 L 15'34"

BM # 10
 SIR 10 Cherry
 US Elev 746.04'

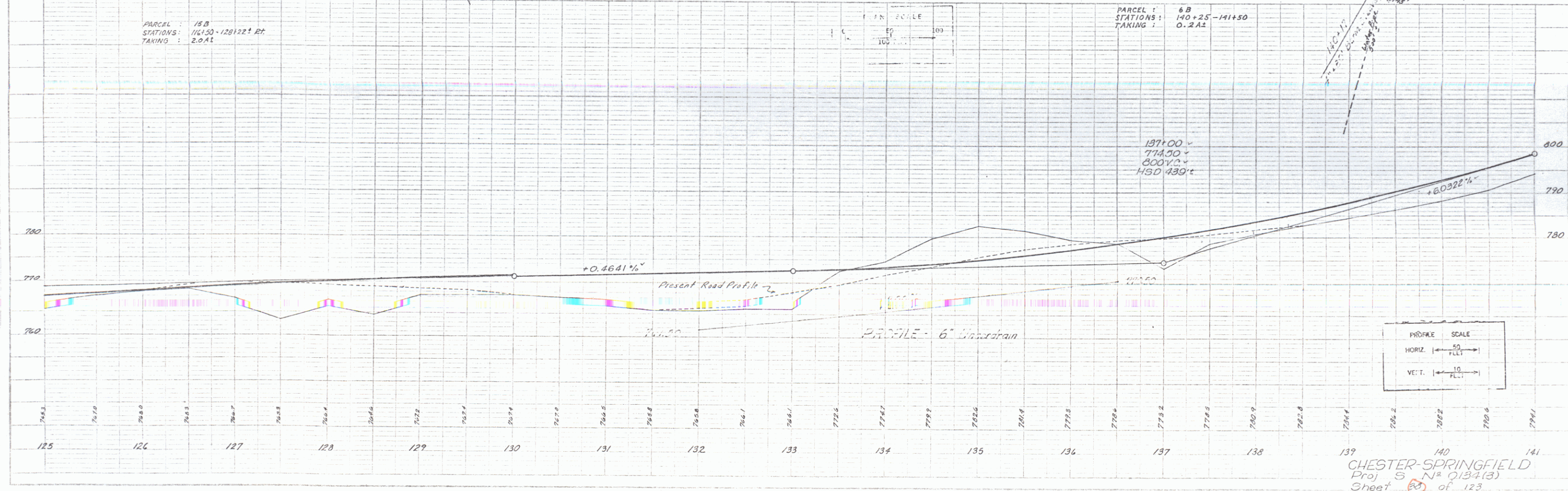
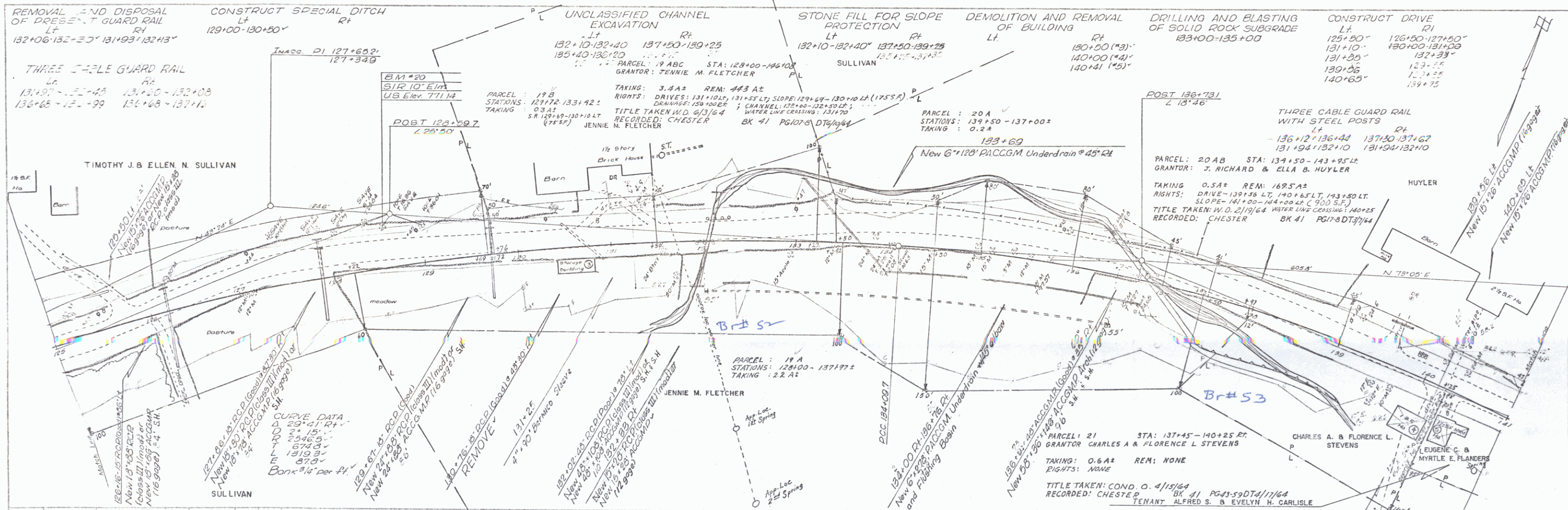
PARCEL: 17
 STA: 112+80-115+56
 GRANTOR: ELLEN S. JERRY D. HAROLD C. JAMES K. FOSTER
 TAKING: NONE REM: 1.3 A1
 RIGHTS: DRIVE 1140 RT
 SLOPE: 1+60-115+00 RT (2551)
 TITLE TAKEN: RECORDED BK PG. DI

PARCEL: 15 B
 STATIONS: 116+50-121+21
 TAKING: 2.0 A1
 PARCEL: 15 ABC STA: 107+33-121+74
 GRANTOR: TIMOTHY J. & ELLEN N. SULLIVAN
 TAKING: 3.3 A2 REM: 4.1 S A1
 RIGHTS: DRAINAGE-123+30 RT
 TITLE TAKEN: COND. O. 4/15/64 BK 41 PG 43-DT 4/17/64
 RECORDED: CHESTER

CURVE DATA
 Δ 35°04' RT
 D 3'15"
 R 1163.0'
 T 571.1'
 L 1104.6'
 E 90.2'
 Bank 3/4 per ft



CHESTER-SPRINGFIELD
 Proj 5 N 0134(3)
 Sheet 90 of 123



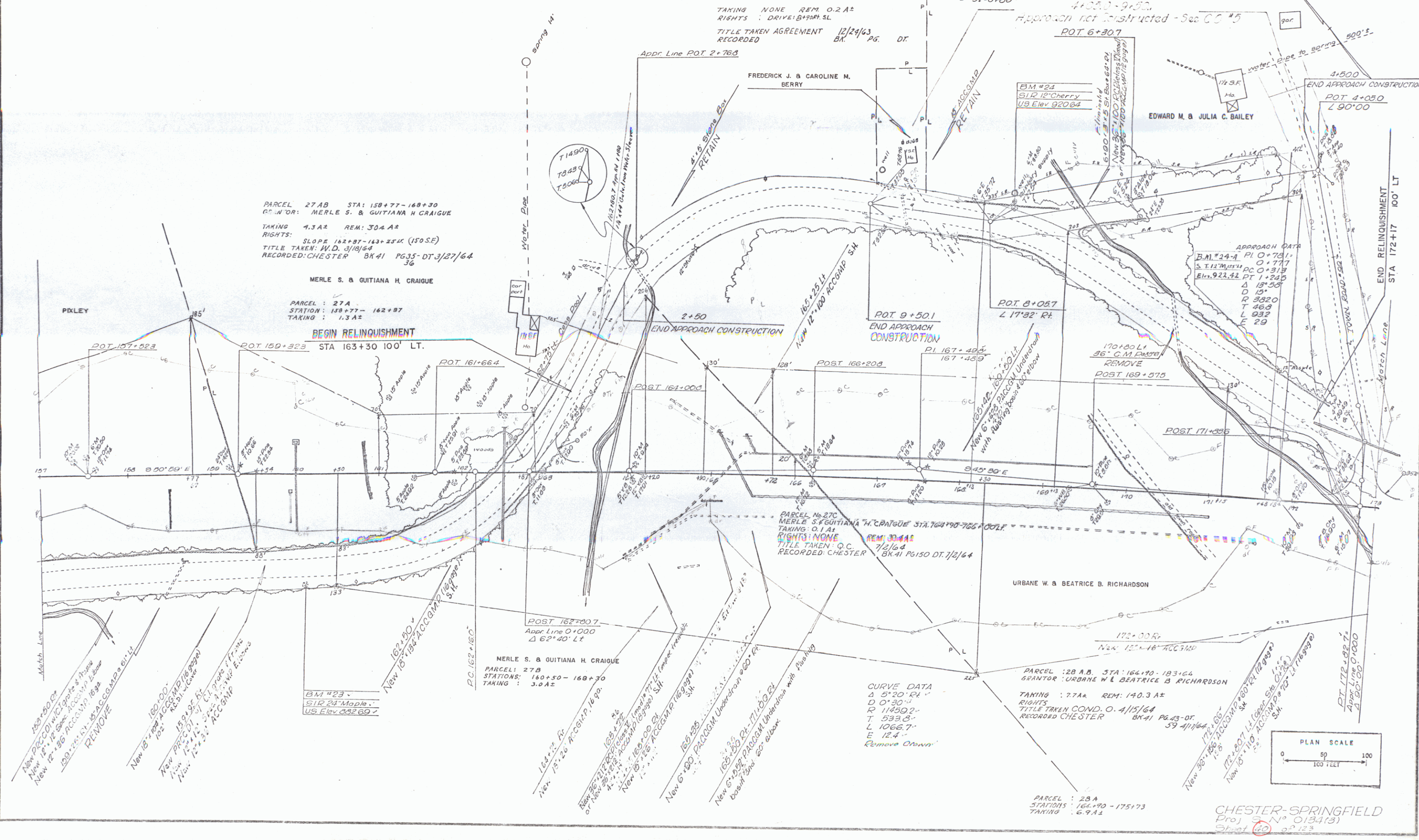
PLAN
 1/8" = 100'
 1/4" = 200'
 1/2" = 400'
 1" = 800'

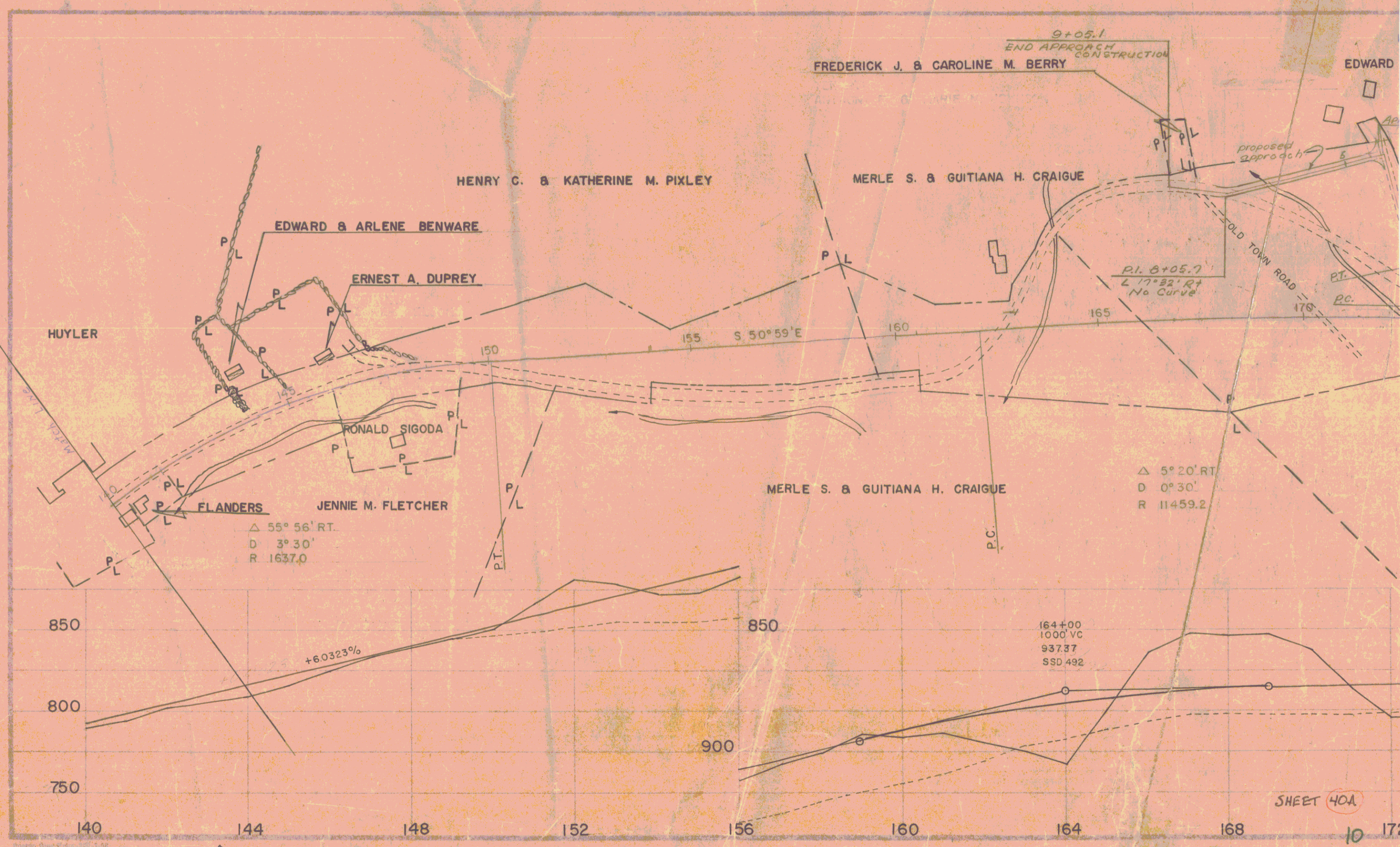
PROFILE
 1/8" = 10'
 1/4" = 20'
 1/2" = 40'
 1" = 80'

CHESTER-SPRINGFIELD
 Proj. S. N. 0134(B)
 Sheet 63 of 123

UNCLASSIFIED CHANNEL EXCAVATION LT. RA 171+30-172+30
 STONE FILL FOR SLOPE PROTECTION LT. RA 173+30-174+30
 T-SEE CABLE GUARD RAIL WITH STEEL POSTS LT. RA 168+50-169+72 157+00-164+20
 BITUMINOUS CONCRETE CURB (Type 1) LT. RA 172+40-173+20
 CONSTRUCT APPROACH LT. RA 157+00-164+20 162+80.7 172+82.7
 CONSTRUCT DRIVE LT. RA 169+00 172+82.7
 WOOD GUIDE POSTS 16" x 6" Approach # 162+80.7 Lt. RA 0+34+22
 DRILLING AND BLASTING OF SOLID ROCK SUBGRADE 157+00-169+50 167+20-169+20

PLAN	NO. 1
SECTION	NO. 1
DETAIL	NO. 1
ASSEMBLY	NO. 1
CONSTRUCTION	NO. 1
REVISION	NO. 1





HUYLER

EDWARD & ARLENE BENWARE

ERNEST A. DUPREY

HENRY C. & KATHERINE M. PIXLEY

FREDERICK J. & CAROLINE M. BERRY

MERLE S. & GUITIANA H. CRAIGIE

EDWARD

RONALD SIGODA

FLANDERS

JENNIE M. FLETCHER

MERLE S. & GUITIANA H. CRAIGIE

Δ 55° 56' RT.
 D 3° 30'
 R 1637.0

Δ 5° 20' RT
 D 0° 30'
 R 11459.2

+6.0323%

164+00
 1000' VC
 937.37
 SSD 492

SHEET 40A

10 172

PLAN	SURVEYED	A
	PLOTTED	C
	ALIGNMENT CHECKED	
	RT OF WAY CHECKED	
	NO	
	LEAVED	

TITLE TAKEN: W. D. 2/13/64
 RECORDED: CHESTER BX. 41 PG. 23-4 DT. 3/7/64

PARCEL : 30 A
 STATIONS : 153+13 - 171+84 Lt.
 TAKING : C. + A ±

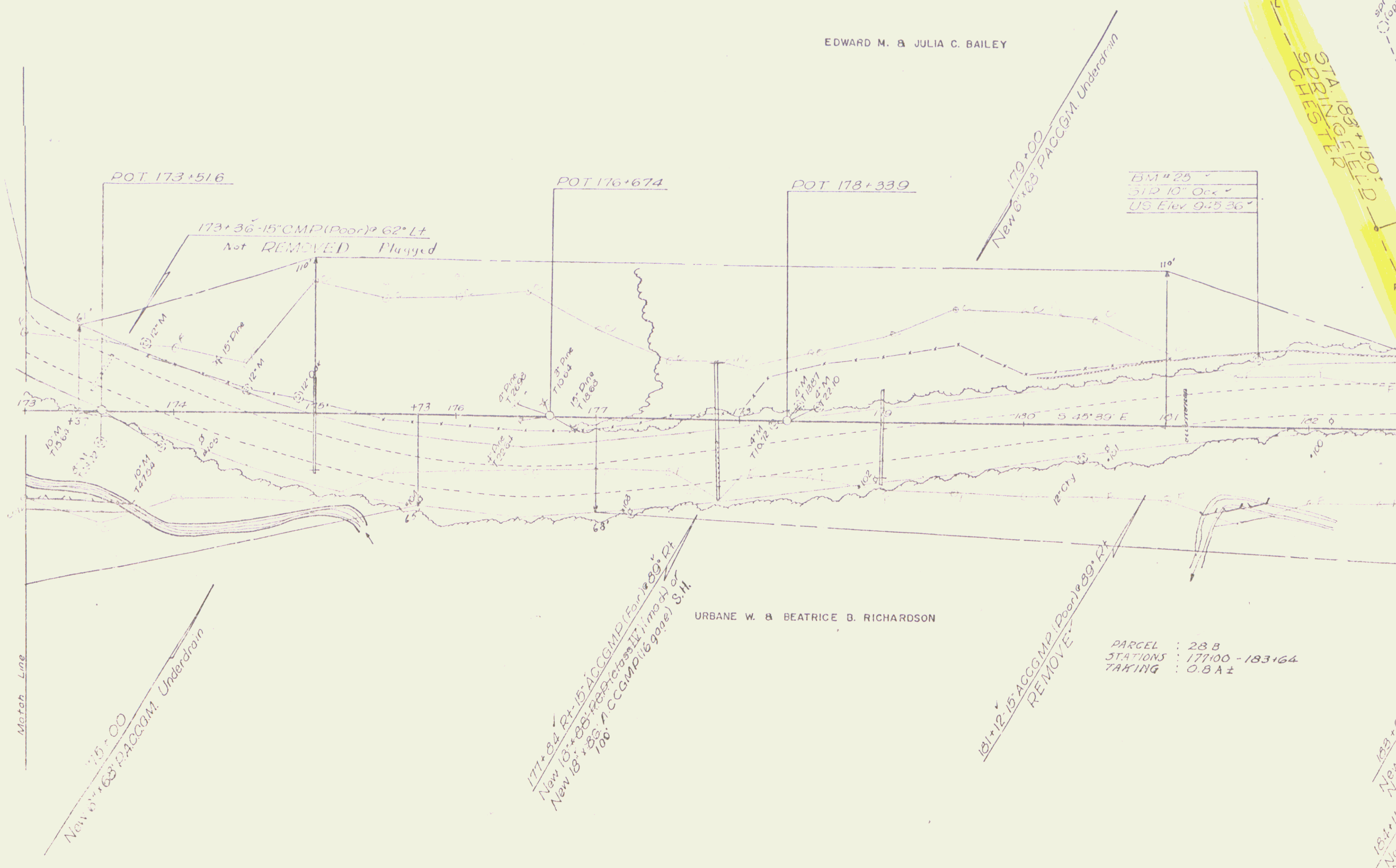
PARCEL : 30 B
 STATIONS : 173+37 - 182+93 Lt.
 TAKING : 2.0 A ±

PARCEL : 31 STAS 182+93 - 184+00 Lt.
 GRANTOR : TOWN OF SPRINGFIELD - LESSOR
 EMMA E BASHAW ESTATE - LESSEE.
 TAKING : 0.1A ± REM: 0.27A ±
 RIGHTS : NONE

TITLE TAKEN: COND. O. 4/15/64
 RECORDED: SPRINGFIELD BX. 5 PG. 347 DT. 4/17/64
 56

EVERETT H. E

EDWARD M. & JULIA C. BAILEY



BM # 25
 512 10" Oak
 US Elev 945.36

URBANE W. & BEATRICE B. RICHARDSON

PARCEL : 28 B
 STATIONS : 177+00 - 183+64
 TAKING : 0.8 A ±

175+00
 New 6" x 8" PACCGM Underdrain

177+84 Rt 15' ACCGMP (Fair) 89' Rt
 New 18" x 8" RCP (Fair) 89' Rt
 New 18" x 8" RCP (Fair) 89' Rt
 100' ACCGMP (Poor) 89' Rt

181+12-15' ACCGMP (Poor) 89' Rt
 REMOVE

188+00
 New 18" x 8" RCP
 184+11.5
 New 18" x 8" RCP

THREE RAIL GUARD RAIL
WITH STEEL POSTS
LT
159+00-191+12
202+00-205+00

CONSTRUCT SPECIAL DITCH
LT
204+75-205+00

CONSTRUCT DRIVE
LT
190+15-20
191+50-80
196+50-10
199+50-62

DRILLING AND BLASTING
OF SOLID ROCK SUBGRADE
197+50-199+75

Excavation & Removal of Road
Surface on Roadways
195+50-199+50 RT
201+00-205+00 LT

PLAN	DATE	BY
SURVEYED	10/17/64	W. J. ...
PLOTTED	12/17/64	...
ALIGNED	12/17/64	...
CHECKED		...
NOTED		...
...		...

PARCEL : 34 STA: 189-95-194+34 LT
GRANTOR : TOWN OF SPRINGFIELD - LESSOR
HARRY E. JOHNSON - LESSEE
TAKING : 0.7 A± REM 3.3 A±
RIGHTS : DRIVE-190+15 LT
TITLE TAKEN Q.C. 10/9/64
RECORDED SPRINGFIELD BK. 5 PG. 375 DT. 11/11/64

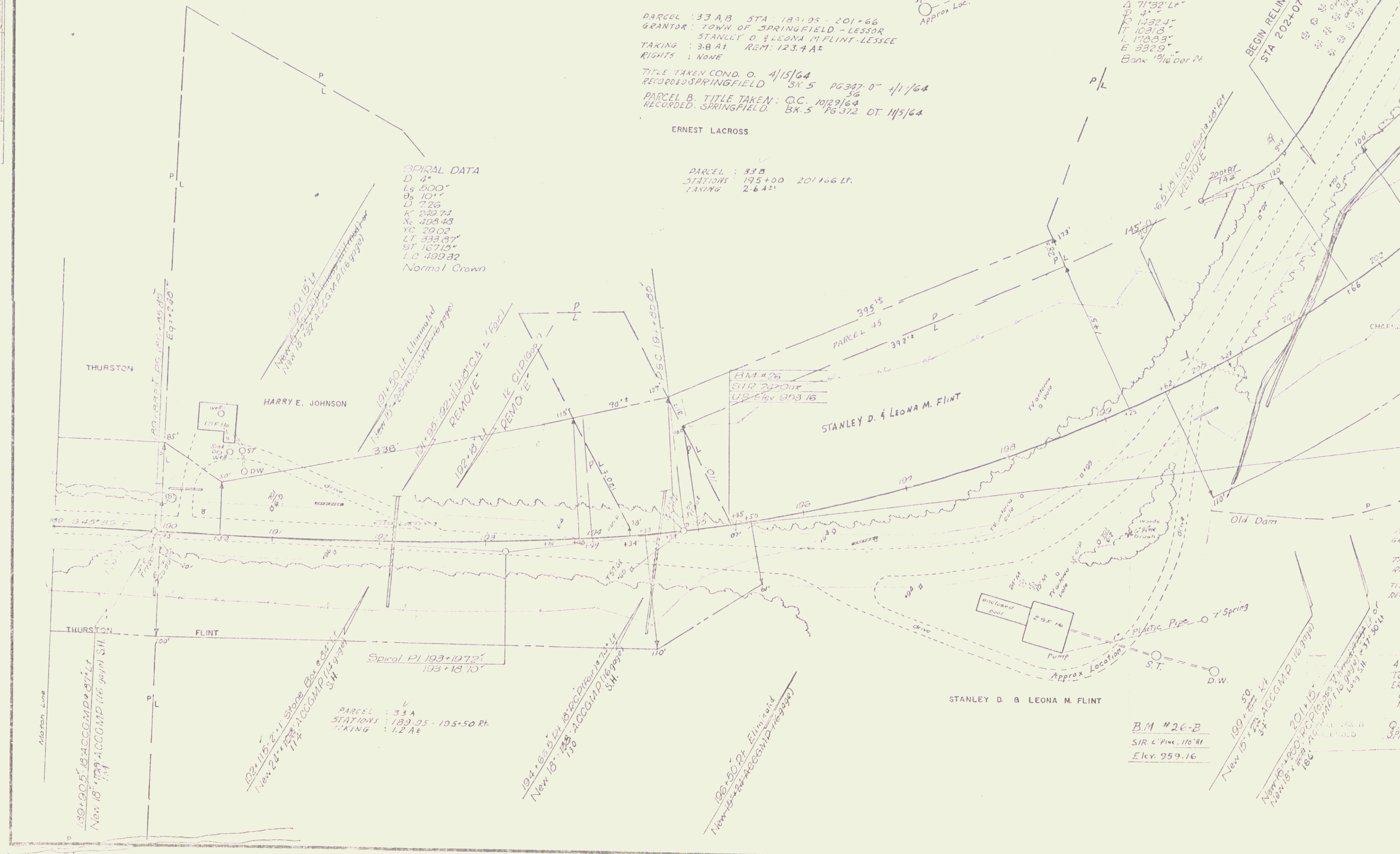
PARCEL : 35 STA. 193+90-195+35 ...
GRANTOR : TOWN OF SPRINGFIELD - LESSOR
EARLE L. & HELEN E. SHANGRAW - LESSEE
TAKING : 0.2 A± REM: 0.2 A±
RIGHTS : NONE
TITLE TAKEN : Q.C. 11/3/64
RECORDED : SPRINGFIELD BK. 5 PG. 377 DT. 11/16/64

PARCEL : 33 AB STA: 189-95-201+66
GRANTOR : TOWN OF SPRINGFIELD - LESSOR
STANLEY D. & LEONA M. FLINT - LESSEE
TAKING : 3.8 A± REM: 123.4 A±
RIGHTS : NONE
TITLE TAKEN COND. O. 4/15/64
RECORDED SPRINGFIELD BK. 5 PG. 347 DT. 11/1/64
PARCEL B. TITLE TAKEN : Q.C. 10/29/64
RECORDED : SPRINGFIELD BK. 5 PG. 372 DT. 11/5/64

ERNEST LACROSS
PARCEL : 33 B
STATION : 195+00 201+66 LT.
TAKING : 2.6 A±

SPIRAL DATA
D 4'
Ls 500'
Os 10'
D 726'
K 242.74
Xc 408.43
Yc 200.2
LT 393.87'
ST 16715'
L.C. 499.32
Normal Crown

CURVE DATA
Δ 71°32' Lt
P 4.2
R 1432.4'
T 103.18'
L 178.83'
E 332.9'
Bank 10' per Ft



PARCEL : 37
GRANTOR : TOWN OF SPRINGFIELD
TAKING : 2.6 A±
RIGHTS : DRIVE
TITLE TAKEN COND. O.
RECORDED SPRINGFIELD

45
TOWN OF SPRINGFIELD
ERNEST R. & MARGARET
0.3 A±
NONE
Q.C. 8/27/64
SPRINGFIELD

B.M. #26-B
SIR. C. PINE, 116' RT
Elev. 959.16

190+50
191+15
192+15
193+15
194+15
195+15
196+15
197+15
198+15
199+15
200+15
201+15
202+15
203+15
204+15
205+15

M. & JULIA C. BAILEY

OR. P.O.T. 4+05.0
L 90°00' L

APPR DATA
D 13°58' L
D 15°
R 382.0

TOWN OF SPRINGFIELD, LESSOR
FAYETTE R. & EVELYN E.
SCOTT, LESSEE

TOWN OF SPRINGFIELD, LESSOR
EMMA E. BASHAW, LESSEE

STA 183+12.0
SPRINGFIELD
CHESTER

TO WEST SPRINGFIELD
TOWN ROAD # 58

TOWN OF SPRINGFIELD, LESSOR
EVERETT H. & LOUISE K.
THURSTON, LESSEE

TOWN OF SPRINGFIELD,
LESSOR
HARRY E. JOHNSON,
LESSEE

TOWN OF SPRINGFIELD, LESSOR
EARLE L. & HELEN E. SH

FLINT

TOWN OF SPRINGFIELD, LESSOR
STANLEY D. & LEONA M. FLINT, LESSEE

TOWN OF SPRINGFIELD, LESSOR
URBANE W. & BEATRICE B. RICHARDSON, LESSEE

P.T.

175 S 45°39' E 180 185 190 195

THURSTON
TOWN LINE

189+88.33 =
PS 189+85.85
EQ = +2.48'

D 4°
G 10°
L 500.0

P.S.C.

Match Line

EQ = +2.48'

189+88.33 =
189+85.85

+0.5072%

194+00
1000' VC
952.60
SSD 1215

950

900

176 180 184 188 192 196

STA
DEPAR
TOWNS
PR
PRO
PLAN 1"

CONST. JOT SPECIAL DITCH
205+00 - 205+70 Rt.
206+50 - 207+50

MUCK EXCAVATION
206+53 - 207+50

CONSTRUCT APPROACH
Lt.
206+10.3

CONSTRUCT DRIVE
Rt.
206+103 Rt. app. sta 1+30
214+50
215+15

P/L Match Line

NOTE: Re- in existing Stone Wall Appr Lt
Sta. +00 Lt - 2+25 Lt

2+50.0
END APPROACH
CONSTRUCTION

Surv.
Appr. POT 2+824
(not tied)

PARCEL: 36 STA 205+74 - 206+56
GRANTOR: TOWN OF SPRINGFIELD
TAKING: 0.54 A±
RIGHTS: NONE
TITLE TAKEN COND. O. 4/15/64
RECORDED: SPRINGFIELD BK 5 PG 347-DT 4/17/64
56

ERNEST LACROSS A
P/L Match Line

GEORGE F. & DORIS B. THOMPSON

TENANT:
RUSSELL H. & JUNE T. MAC CORMACK

Surv. by Mon. 7-61
Dpt. by H.L.C. 1-62
Trac. by C.E.H. 2-62

Antique Shop
CHAMBERLIN

1 1/2 of house
CHAMBERLIN

CHAMBERLIN

THEODORE R. & PAULINE H. REMINGTON

PARCEL: 39 STA 206+27 - 208+34
GRANTOR: TOWN OF SPRINGFIELD - LESSOR
THEODORE R. & PAULINE H. REMINGTON - LESSEE
TAKING: 0.6 A± REM: 1.0 A±
RIGHTS: NONE
TITLE TAKEN: COND. O. 4/15/64
RECORDED SPRINGFIELD BK 5 PG 347-DT 4/17/64
56

PARCEL: 40 STA: 206+93 - 217+85
GRANTOR: TOWN OF SPRINGFIELD - LESSOR
GEORGE F. & DORIS B. THOMPSON - LESSEE
TAKING: 3.2 A± REM: 0.8 A±
RIGHTS: DRAINAGE - STA. 215+00 Lt.
TITLE TAKEN COND. O. 4/15/64
RECORDED SPRINGFIELD BK 5 PG 347-DT 4/17/64
56

POST 205+421
Appr. POT 1+774
(not tied)
POST 205+407
ARTHUR P. & SAIMA E. JOHNSON

Req. Appr. Data
P.I. 0+540
0+152.0 P
P.C. 0+1274
P.T. 0+120.6
A 5' 19" Lt.
D 10'
R 5730
T 26.6
L 532
E 0.6

THOMPSON

OLNEY

PARCEL: 41 STA: 210+85 - 234+70
GRANTOR: TOWN OF SPRINGFIELD - LESSOR
HARRY F. & ERLA H. OLNEY - LESSEE
TAKING: 3.8 A± REM: 77.2 A±
RIGHTS: DRAINAGE - STA. 226+00 Lt.

TITLE TAKEN COND. O. 4/15/64
RECORDED SPRINGFIELD BK 5 PG 347-DT 4/17/64
56

HARRY F. & ERLA H. OLNEY

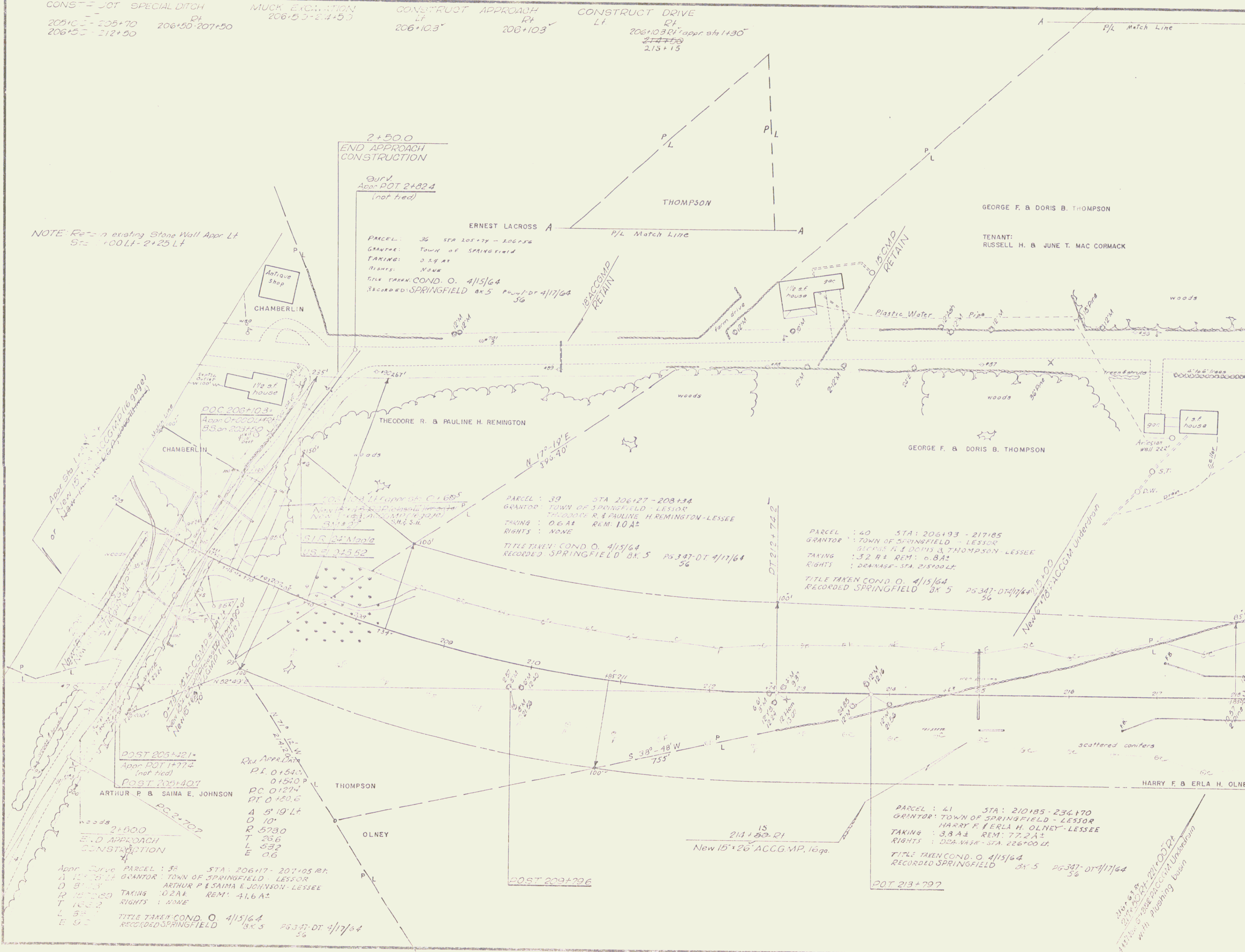
Appr. Curve PARCEL: 38 STA: 206+17 - 207+05 Rt.
A 12' 25" Lt. GRANTOR: TOWN OF SPRINGFIELD - LESSOR
D 3' 25" ARTHUR P. & SAIMA E. JOHNSON - LESSEE
R 15700 TAKING: 0.2 A± REM: 41.6 A±
T 163.2 RIGHTS: NONE
L 55 TITLE TAKEN COND. O. 4/15/64
E 9.2 RECORDED SPRINGFIELD BK 5 PG 347-DT 4/17/64
56

POST 209+796

15
214+50-21
New 15' x 26" ACCG.M.P. 16 ga.

POT 213+797

214+50
217+00
15' x 26" ACCG.M. Underdrain
with Pushing Basin



THREE CABLE GUARD RAIL
WITH STEEL POSTS
Lt Rt
225+25-231-17

MUCK EXCAVATION
227+50-239-00

CONSTRUCT DRIVE
Lt Rt
224+50-30

CONSTRUCT SPECIAL DITCH
Lt
231+00-237+00

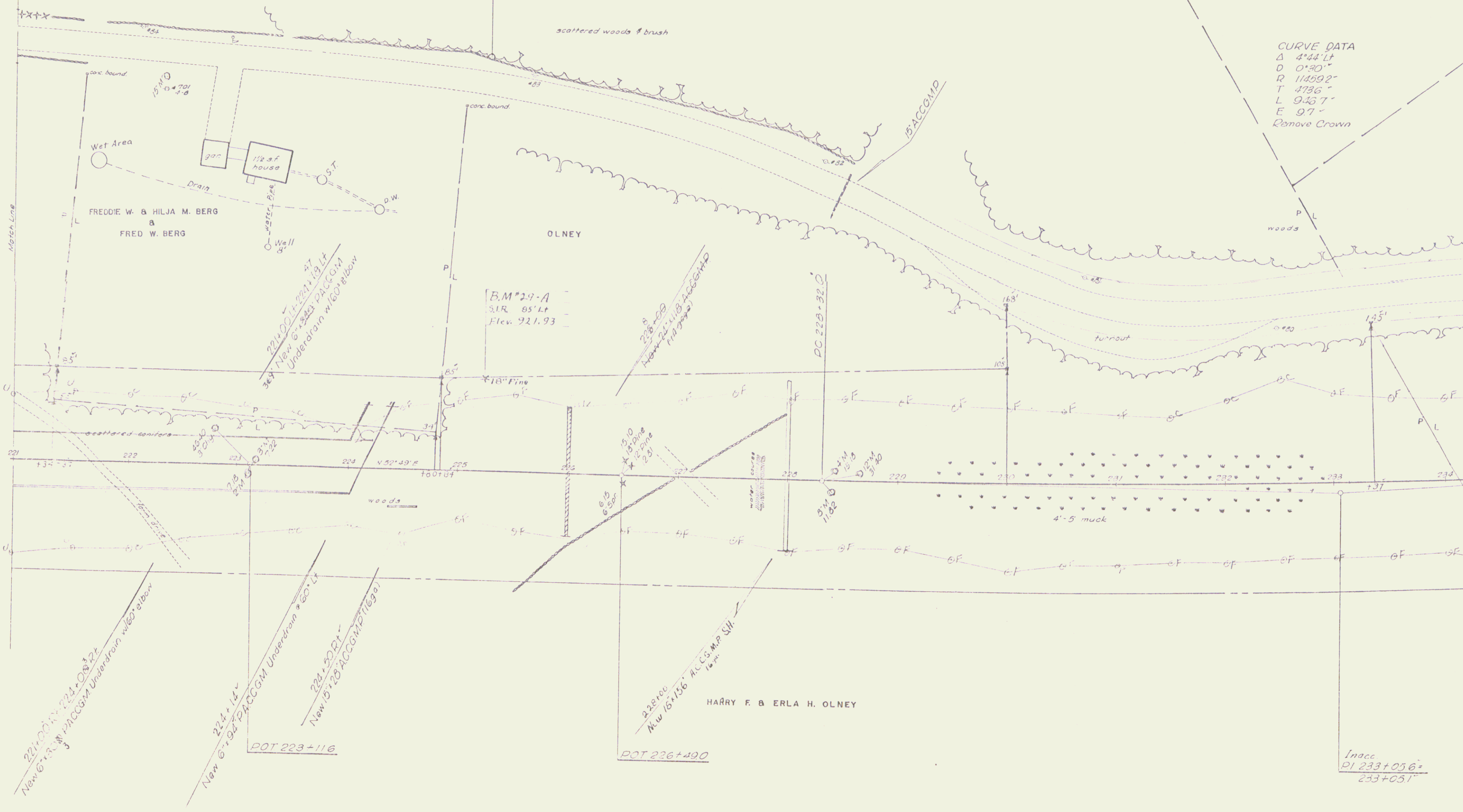
PARCEL: 4.2 STA: 221+34-224+84 Lt
SEANTOR: TOWN OF SPRINGFIELD - LESSOR
FREDDIE W. & HILJA M. BERG & FRED W. BERG - LESSEES
TAKING: 0.3 AL REM: 2.1 AL
SHTS: DRAINAGE- STA. 224+14 Lt, 224+40 Lt
FILE TAKEN COND. O. 4/15/64
RECORDED SPRINGFIELD BK 5 PG 347-DT 4/17/64
56

BM*29
SIR 12' Elm
US EI 92133

JAMES D. & ELIZABETH P. BLADYKA

CURVE DATA
Δ 4°44' Lt
D 0°30'
R 114592'
T 4736'
L 9467'
E 97'
Remove Crown

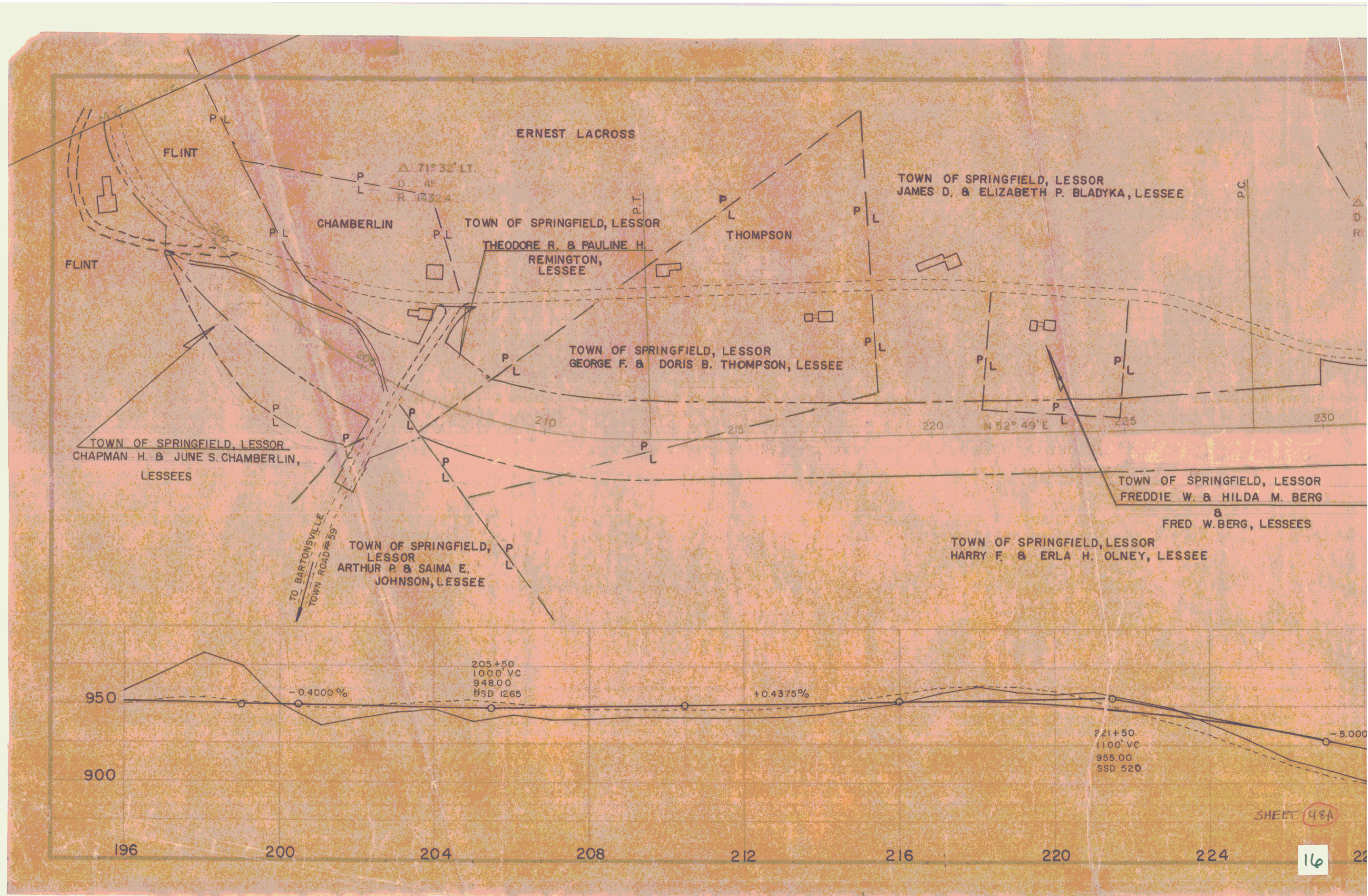
Surveyed March 10-61
Placed 1-62
Placed 2-62



POT 223+116

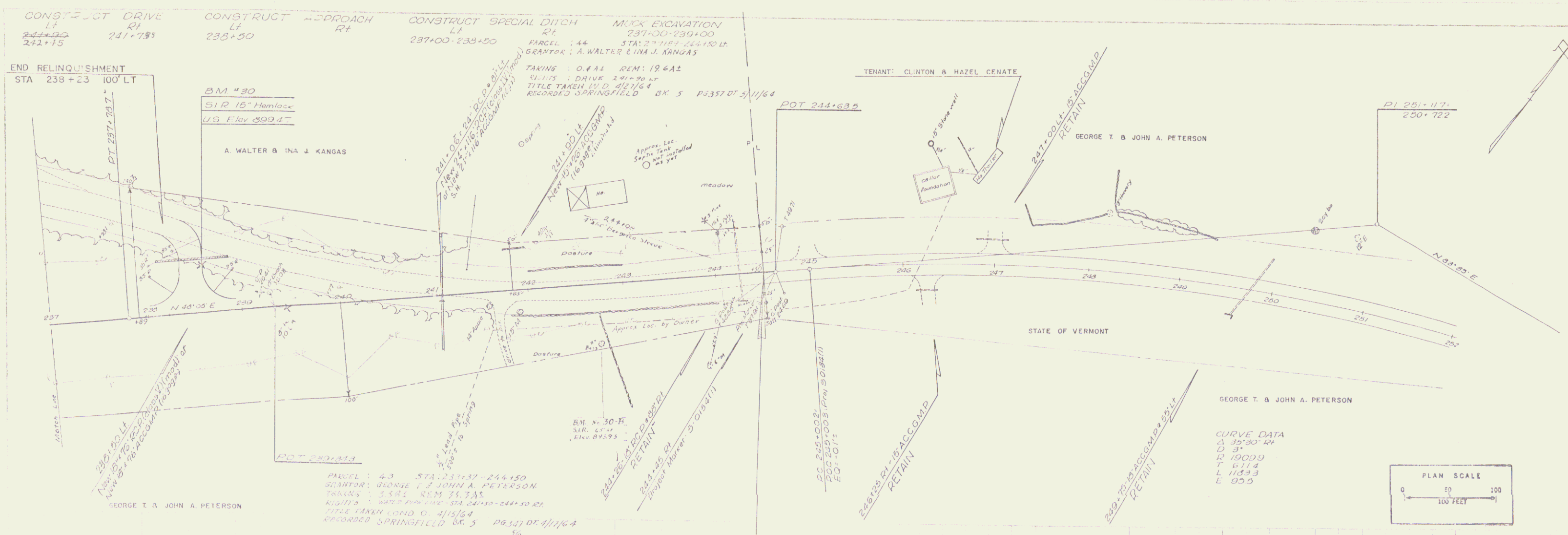
POT 226+490

Inacc
PI 233+056=
233+051'

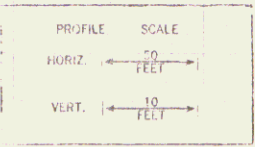
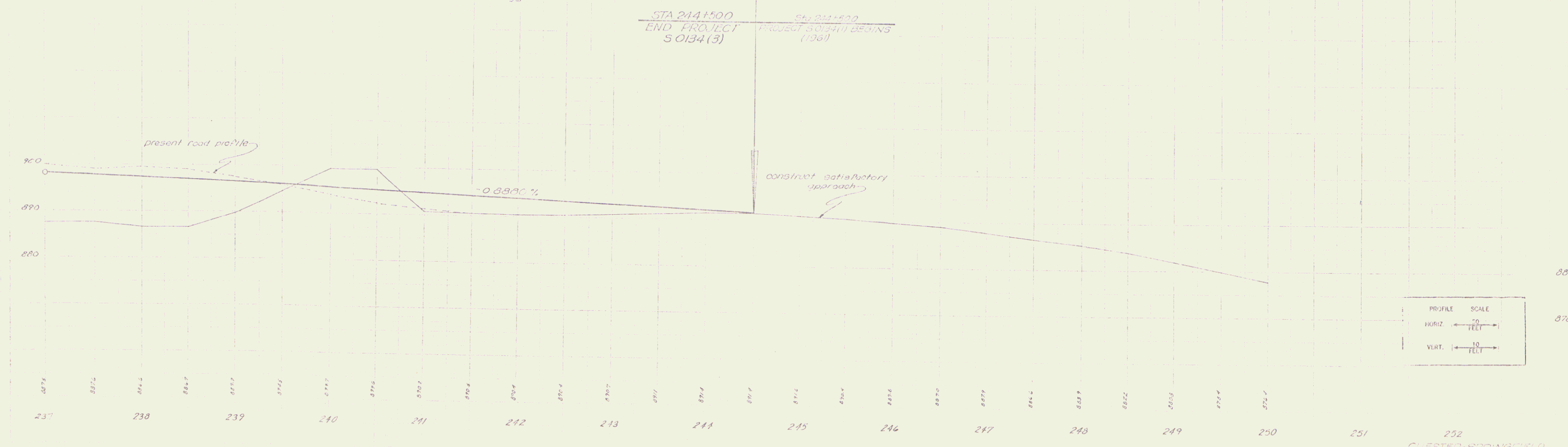
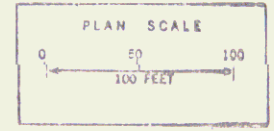


SHEET 48A

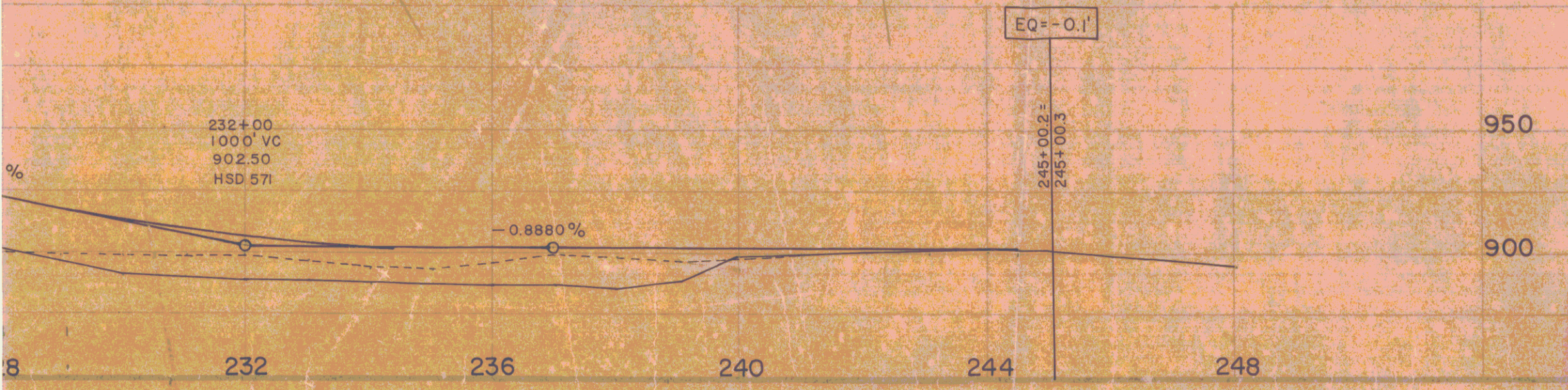
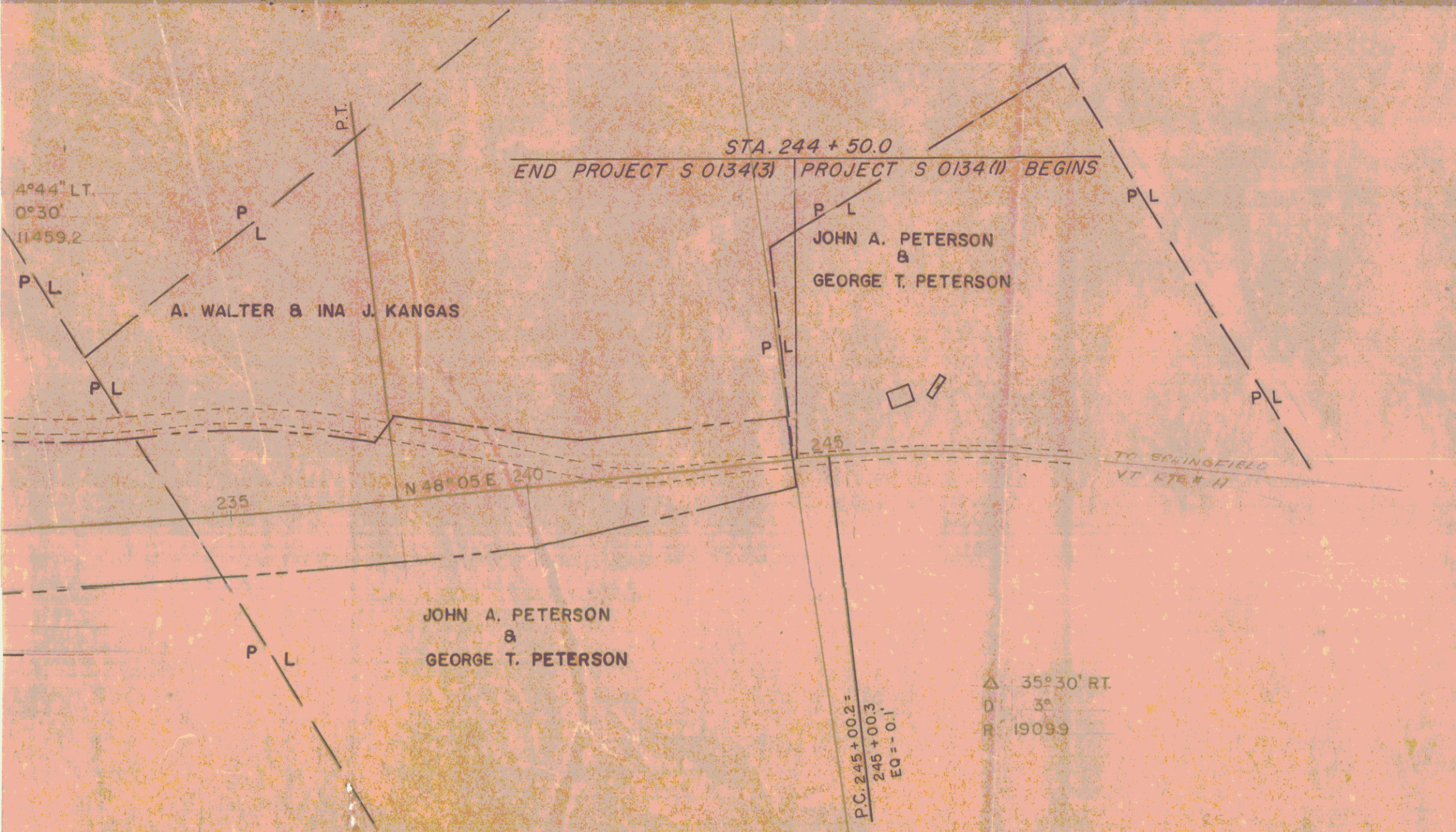
16



CURVE DATA
 Δ 35°30' RH
 D 3'-
 L 100.09
 T 61.14
 L 115.93
 E 80.0



CHESTER-SPRINGFIELD
 ENGINEERS & ARCHITECTS
 500 F. 123



STATE OF VERMONT
DEPARTMENT OF HIGHWAYS

CHESTER TOWNS OF SPRINGFIELD

PROPOSED LOCATION

PROJECT S NO 0134(3)

SCALE: SHEET 60A

PLAN 1"=400' PROFILE HOR. 1"=400' VERT. 1"=100'