

THREE CABLE GUARD RAIL
WITH STEEL POSTS
Lt Rt
225+25-231-17

MUCK EXCAVATION
227+50-239-00

CONSTRUCT DRIVE
Lt Rt
224+50-30

CONSTRUCT SPECIAL DITCH
Lt
231+00-237+00

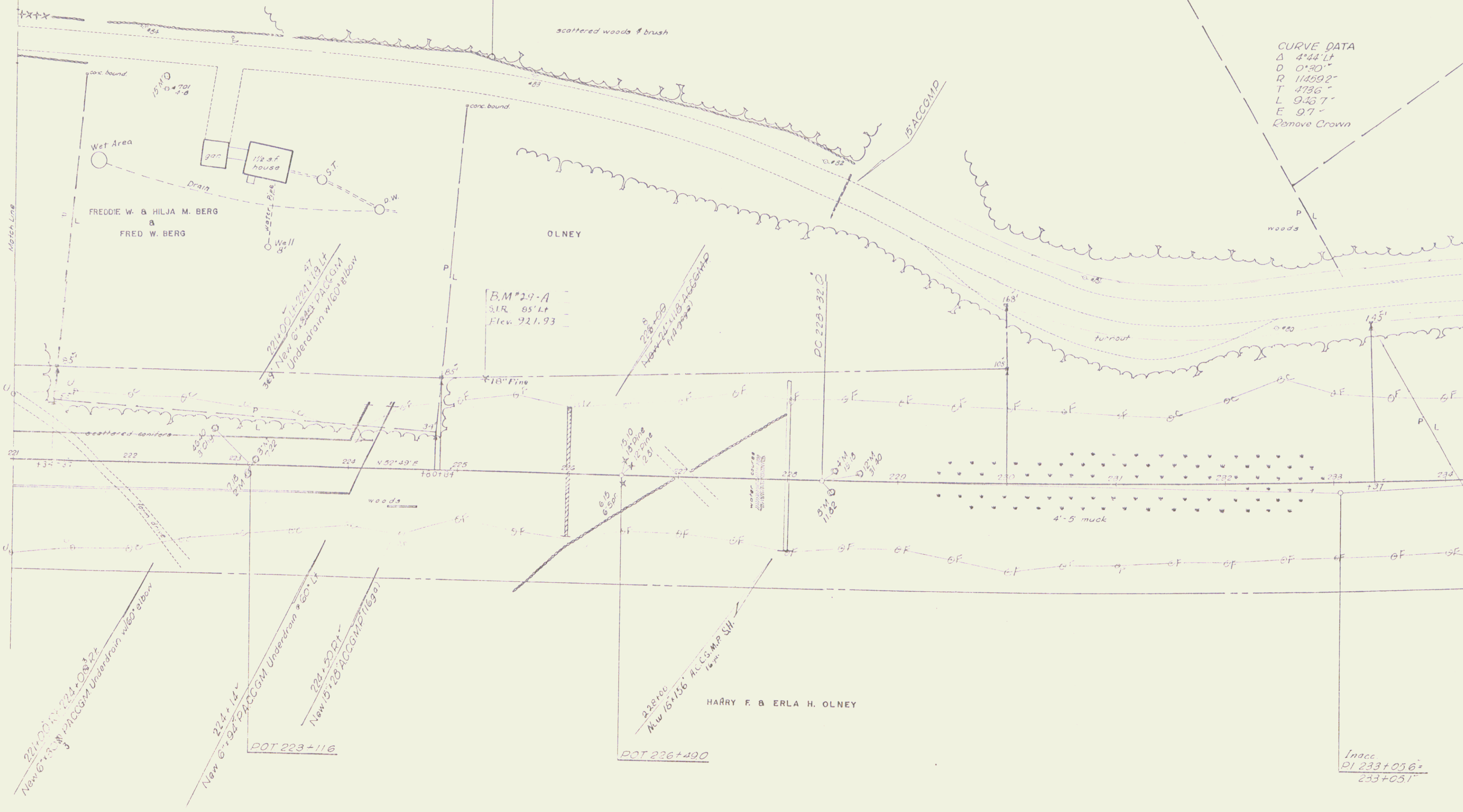
PARCEL: 4.2 STA: 221+34-224+84 Lt
SEANTOR: TOWN OF SPRINGFIELD - LESSOR
FREDDIE W. & HILJA M. BERG & FRED W. BERG - LESSEES
TAKING: 0.3 AL REM: 2.1 AL
SHTS: DRAINAGE - STA. 224+14 Lt, 224+40 Lt
FILE TAKEN COND. O. 4/15/64
RECORDED SPRINGFIELD BK 5 PG 347-DT 4/17/64
56

BM*29
SIR 12' Elm
US EI 92133

JAMES D. & ELIZABETH P. BLADYKA

CURVE DATA
Δ 4°44' Lt
D 0°30'
R 114592'
T 4736'
L 9467'
E 97'
Remove Crown

Surveyed
March 10-61
Placed
1-62
by
C.F.H.
2-62



BM*29-A
SIR 85' Lt
Flev. 921.93

HARRY F. & ERLA H. OLNEY

Inacc
PI 233+056 =
233+051'