

INDEX OF SHEETS

SHEET NO.	TITLE PAGE
2	TYPICAL CROSS-SECTION OF IMPROVEMENT
3	BANKING AND WIDENING TABLES
4-8	PLAN AND PROFILE SHEETS
9	STANDARD STRUCTURE SHEET S-20 - Pipe Culverts
10	STRUCTURES, SIGNS & LIGHTS S-21
11-17	CROSS SECTIONS

FED. ROAD DIST. NO.	STATE	FED. AID PROJ. NO.	FISCAL YEAR	SHEET NO.	TOTAL SHEETS
9	VT.	E-100-F	1932	1	17

STATE OF VERMONT
STATE HIGHWAY DEPARTMENT

PLAN AND PROFILE OF PROPOSED
STATE HIGHWAY

FEDERAL AID PROJECT

TOWN OF CHESTER

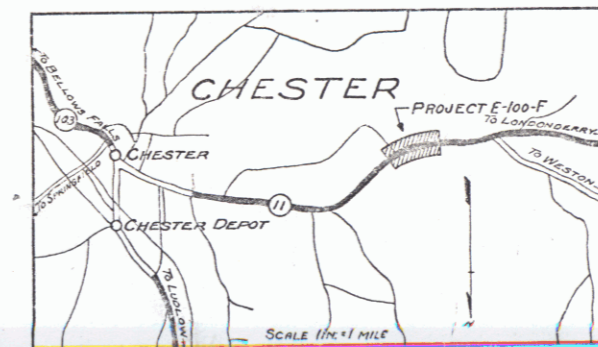
BELLOWS FALLS - LONDONDERRY ROAD

FROM 600 FT. WEST OF THE HOUSE OF J. MURRAY
WESTERLY 0.657 MILES TO 280 FT. EAST OF A
BRIDGE OVER THE WILLIAMS RIVER BRANCH

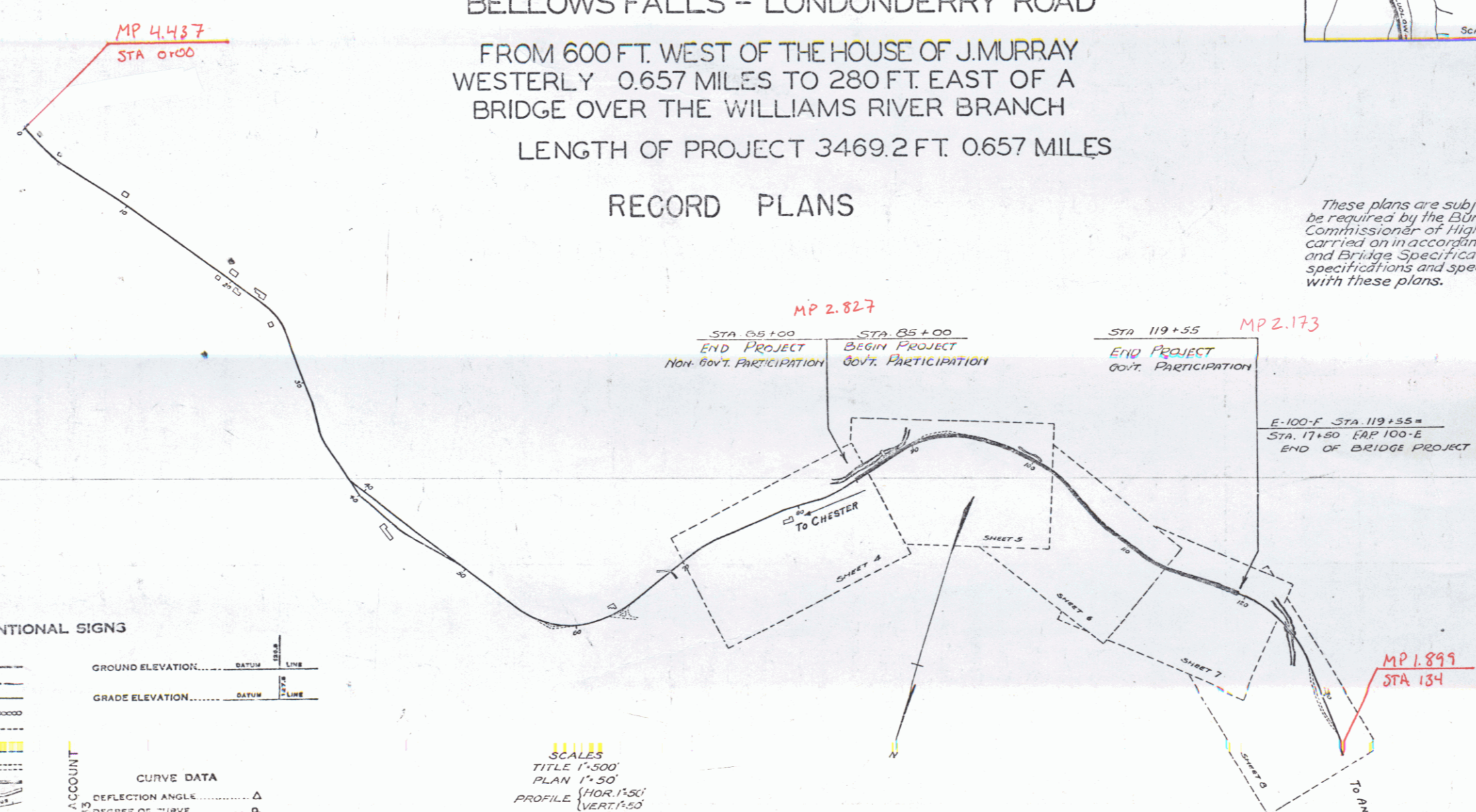
LENGTH OF PROJECT 3469.2 FT. 0.657 MILES

RECORD PLANS

Pin #
99R 876



(To Be Returned to R.O.W. Division)
TOWN OF CHESTER
RIGHT-OF-WAY DIVISION



These plans are subject to such revisions as may be required by the Bureau of Public Roads, or the Commissioner of Highways. Construction is to be carried on in accordance with the Standard Road and Bridge Specifications of 1930, with such revised specifications and special provisions as are submitted with these plans.

STA 0+50 100
END PROJECT Non-Govt. PARTICIPATION

STA 0+50 100
BEGIN PROJECT Govt. PARTICIPATION

STA 119+55
END PROJECT Govt. PARTICIPATION

MP 2.173

E-100-F STA 119+55 =
STA 17+50 (AP 100-E)
END OF BRIDGE PROJECT

APPROVED: 10/31/32
H.E. Sargent
COMMISSIONER OF HIGHWAYS

NOTE: ANY FURTHER INFORMATION CONCERNING THIS PROJECT MAY BE FOUND IN EITHER THE FIELD BOOKS OR THE ESTIMATE FILE.

CONVENTIONAL SIGNS

COUNTY LINE	GROUND ELEVATION
TOWN LINE	GRADE ELEVATION
FENCE LINE	
STONE WALL	
UNFENCED PROPERTY	
GUARD RAIL	
TRAVELED WAY	
RAILROAD	
RETAINING WALL	
CENTER LINE	
SURVEY LINE	
CULVERT	
DROP INLET	
TROLLEY POLE	
POWLER POLE	
TELEPHONE POLE	
YARDS	
HEDGE	

SCALES
TITLE 1"=500'
PLAN 1"=50'
PROFILE (HOR.) 1"=50'
CROSS SECTION 1"=5'

CURVE DATA

REFLECTION ANGLE	Δ
DEGREE OF CURVE	D
RADIUS OF CURVE	R
TANGENT DISTANCE	T
INTERNAL DISTANCE	E
POINT OF INTERSECTION	P.I.
POINT OF CURVE	P.C.
POINT OF TANGENT	P.T.
POINT ON TANGENT	P.O.T.

Project No. F E-100-F

APPROVED: [Signature]
CORRECTED: [Signature]
SERIES F. NO. E-100-F FILED
SHEET 1 OF 17

STEARNS R. JENKINS