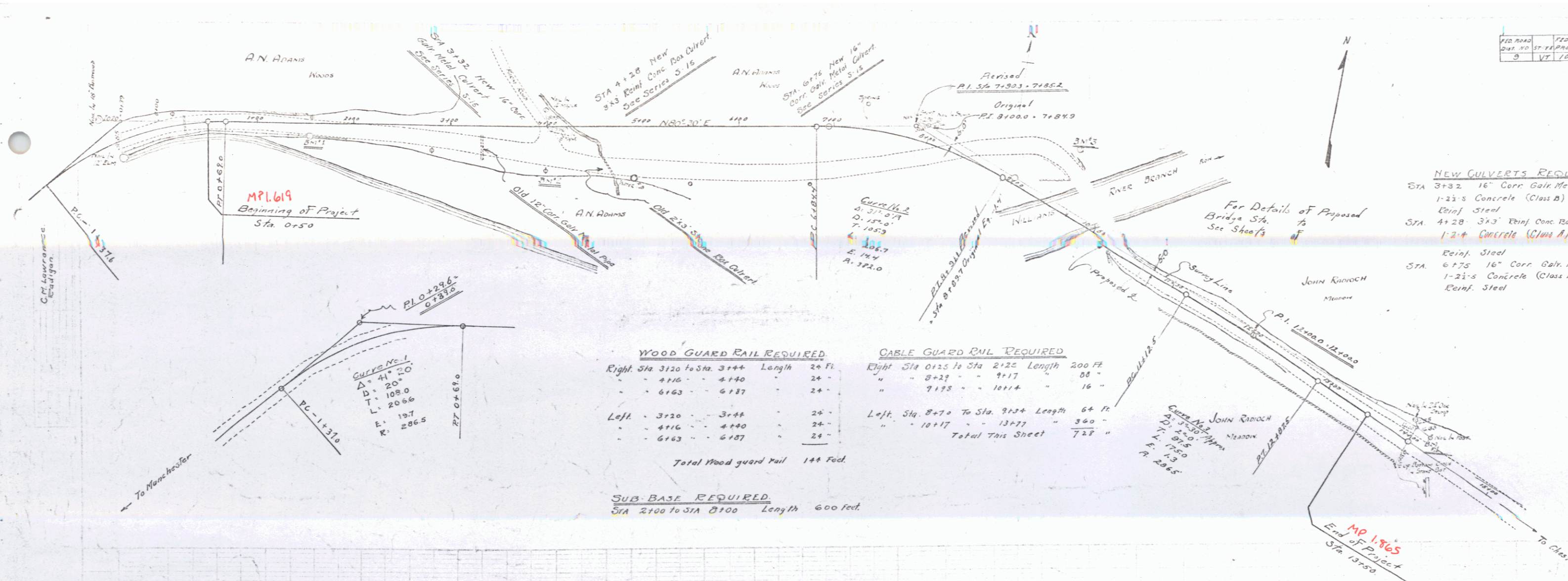


NO. ROAD	NO. ST. RE.	NO. P.E.A.M.	NO. SHEETS	TOTAL
3	VT	1000	1927	3



WOOD GUARD RAIL REQUIRED

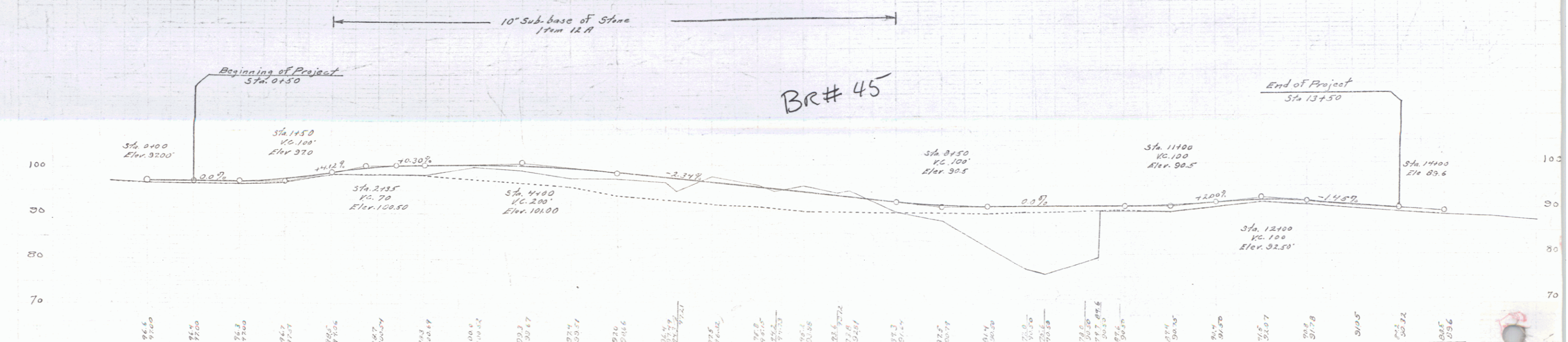
Right Sta	To Sta	Length	24 Ft
3120	3140	20	24
3140	3187	47	24
3120	3144	24	24
3144	4140	996	24
4140	6187	2047	24
Total Wood guard rail 144 Feet			

CABLE GUARD RAIL REQUIRED

Right Sta	To Sta	Length	64 Ft
0125	2122	1997	64
8+27	9+17	90	64
9+75	10+14	39	64
Left Sta	To Sta	Length	64 Ft
8+70	9+24	54	64
10+17	13+77	360	64
Total This Sheet 728			

SUB-BASE REQUIRED

Sta 2100	To Sta 8100	Length	600 feet
----------	-------------	--------	----------



B.M.M.L. Spike in Telephone Pole Right Sta 0+50 - 87.28
 B.M.M.L. Spike in Telephone Pole Right Sta 2+00 - 89.33
 B.M.M.L. Spike in Telephone Pole Left Sta 14+00 - 89.51

Sheet 15 of 15
 Series 14 1000B