

Parcel A
 Kind of Instrument: G.C.D.
 Date of Instrument: 12-23-34
 Grantor: Chester Savings Bank
 Grantee: Chester
 Recorded Date: 1-5-35
 Remarks: 34 1/2'

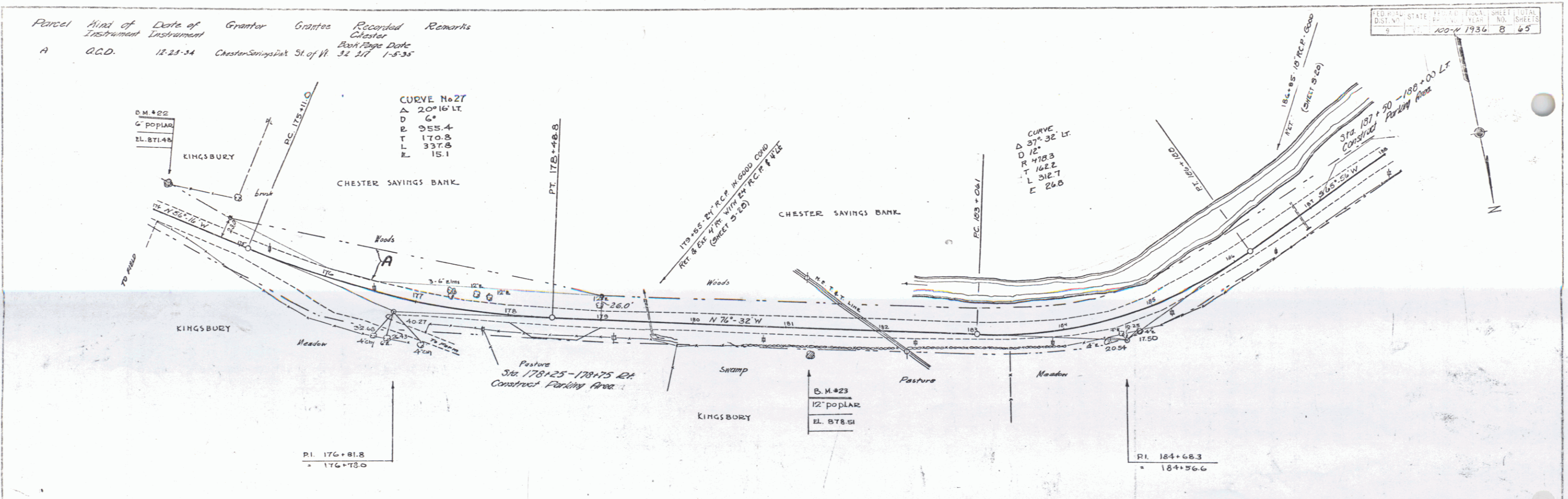
CURVE No 27
 Δ 20° 16' LT
 D 6'
 E 955.4
 T 170.8
 L 337.8
 E 15.1

CURVE
 Δ 37° 32' LT
 D 12'
 R 418.3
 T 162.7
 L 512.7
 E 26.0

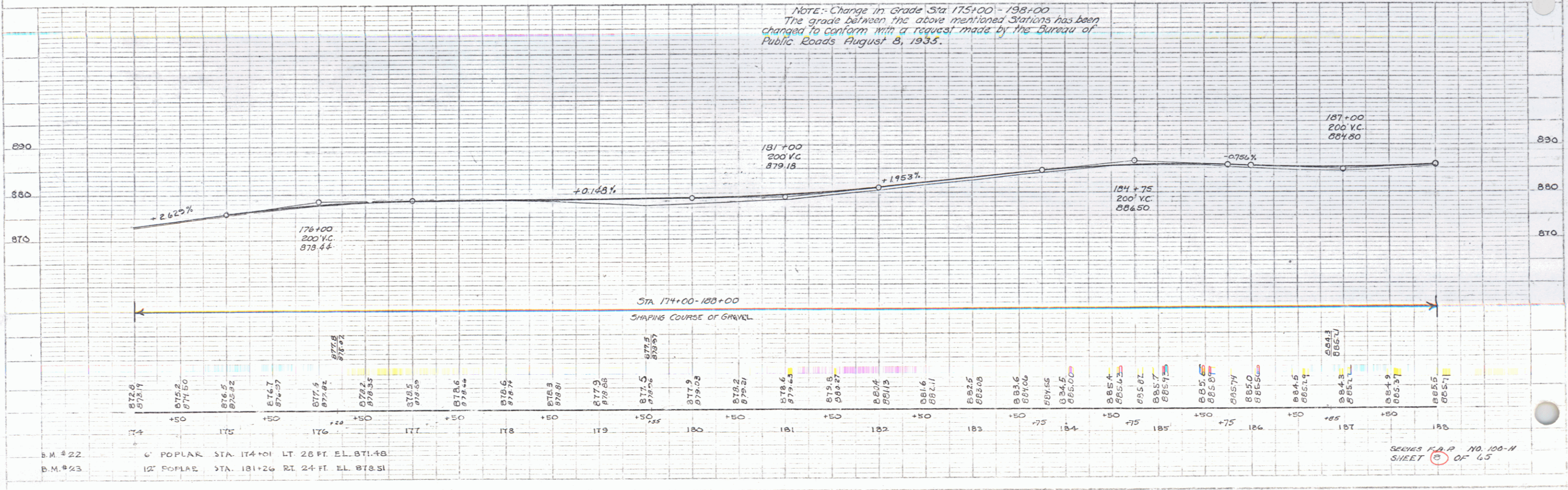
100-N 1934 B 65

PLAN
 DATE: 12/23/34
 DRAWN BY: PUTNAM, D. MACCHI
 CHECKED BY: D. MACCHI

12/23/35
 PUTNAM, D. MACCHI



NOTE: Change in Grade Sta 175+00 - 198+00
 The grade between the above mentioned Stations has been changed to conform with a request made by the Bureau of Public Roads August 8, 1935.



SERIES P.A.P. NO. 100-N
 SHEET 6 OF 65