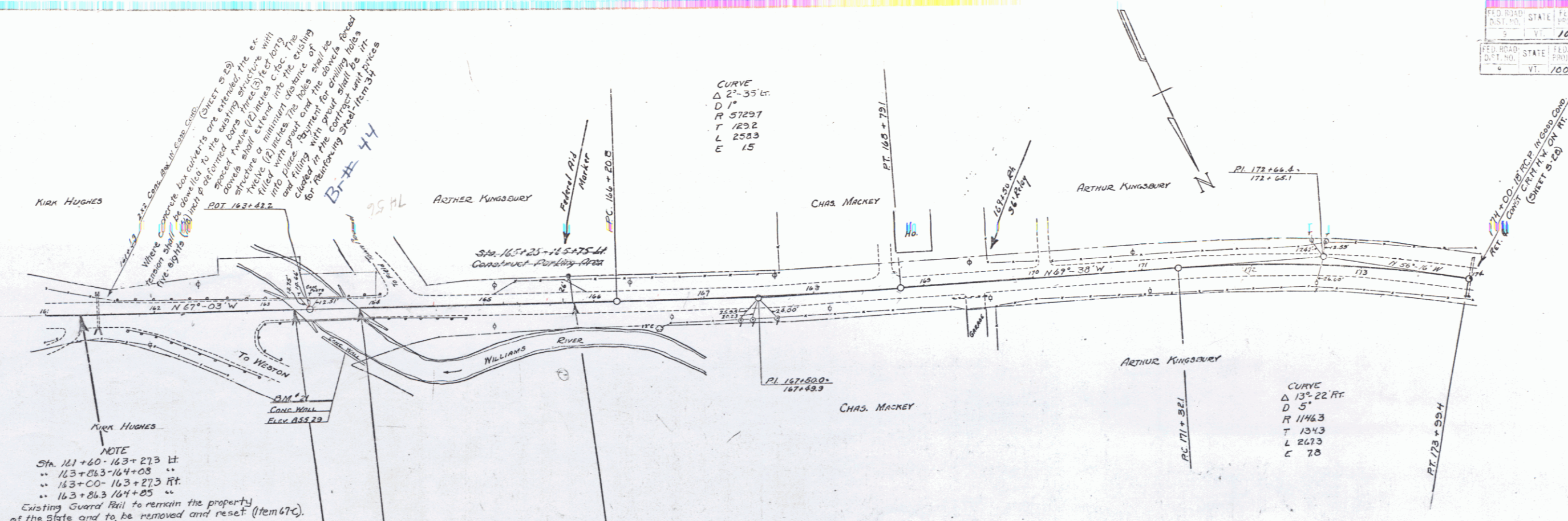
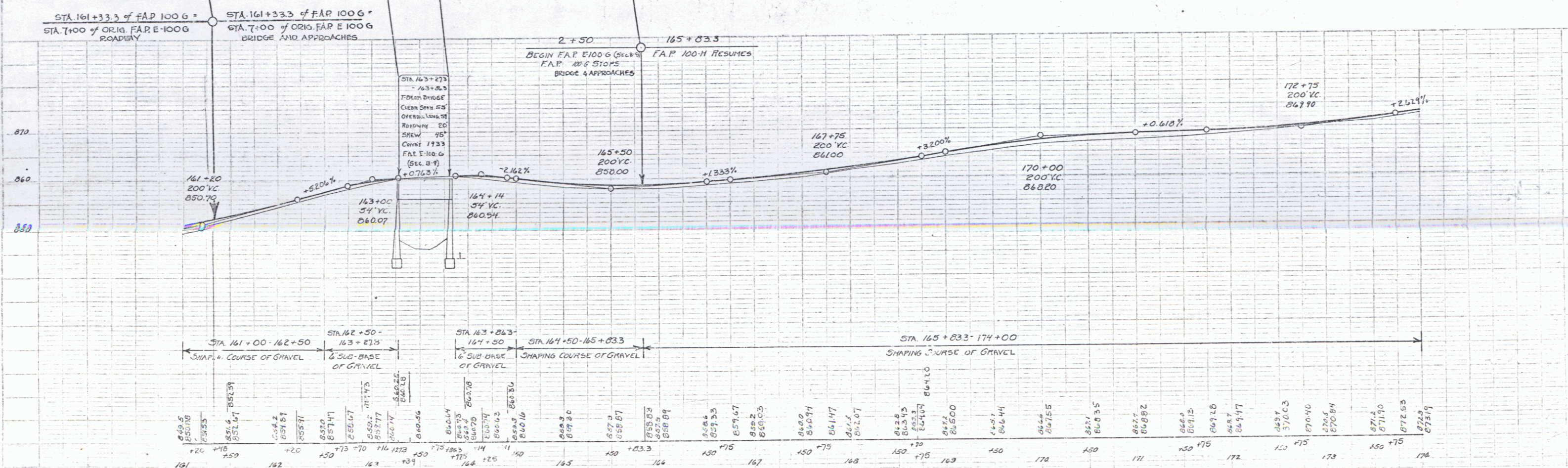


FED. ROAD DIST. NO.	STATE	FED. AID FISCAL YEAR	SHEET NO.	TOTAL SHEETS
100-H	VT	1936	7	16
FED. ROAD DIST. NO.	STATE	FED. AID FISCAL YEAR	SHEET NO.	TOTAL SHEETS
100-G	VT	1936	5	16



NOTE  
 Sta. 161+60-163+273 H.  
 .. 163+86.3/164+08 ..  
 .. 163+00-163+273 Ft.  
 .. 163+86.3/164+08 ..  
 Existing Guard Rail to remain the property of the State and to be removed and reset (Item 67C).



B.M. #21 SPOT ON CONC. RET. WALL 10 FT. ET OF STA 163+74 ELEV. 855.25 (USGS B.M. #210 1929)

Series F.A.P. No. 100-G Sheet 5 of 16  
 Series F.A.P. No. 100-H Sheet 7 of 16