

SHEET NO.	TITLE PAGE
1	TITLE PAGE
2	TYPICAL CROSS-SECTION OF IMPROVEMENT - CRUSHED GRAVEL MIXED-IN-PLACE SURF COURSE
3	BANKING AND WIDENING TABLES
4-7	PLAN AND PROFILE STA.
8	STANDARD STRUCTURE SHEET, 5-28, PIPE CULVERTS
9	" " " " 5-30, GUNDA PILL
10	" " " " 5-30, P.A. & BOUNDARY MARKERS
11	" " " " 5-40, BRICKWORK, STAIRS & LIVERS
12	" " " " 5-41, ROUNDING OF SLOPES
13-26	CROSS SECTION SHEETS.

STANDARD STRUCTURE SHEETS APPROVED  
BY THE CHIEF ENGINEER:  
5-28, JULY 15, 1933  
5-30, AUGUST 15, 1933

STATE OF VERMONT  
STATE HIGHWAY DEPARTMENT

Pin # 99R873

FED. ROAD DIST. NO.	STATE	FED. AID PROJ. NO.	FISCAL YEAR	SHEET NO.	TOTAL SHEETS
9	VT.	100-C	1933	1	26

PLAN AND PROFILE OF PROPOSED  
STATE HIGHWAY  
FEDERAL AID PROJECT

TOWN OF ANDOVER

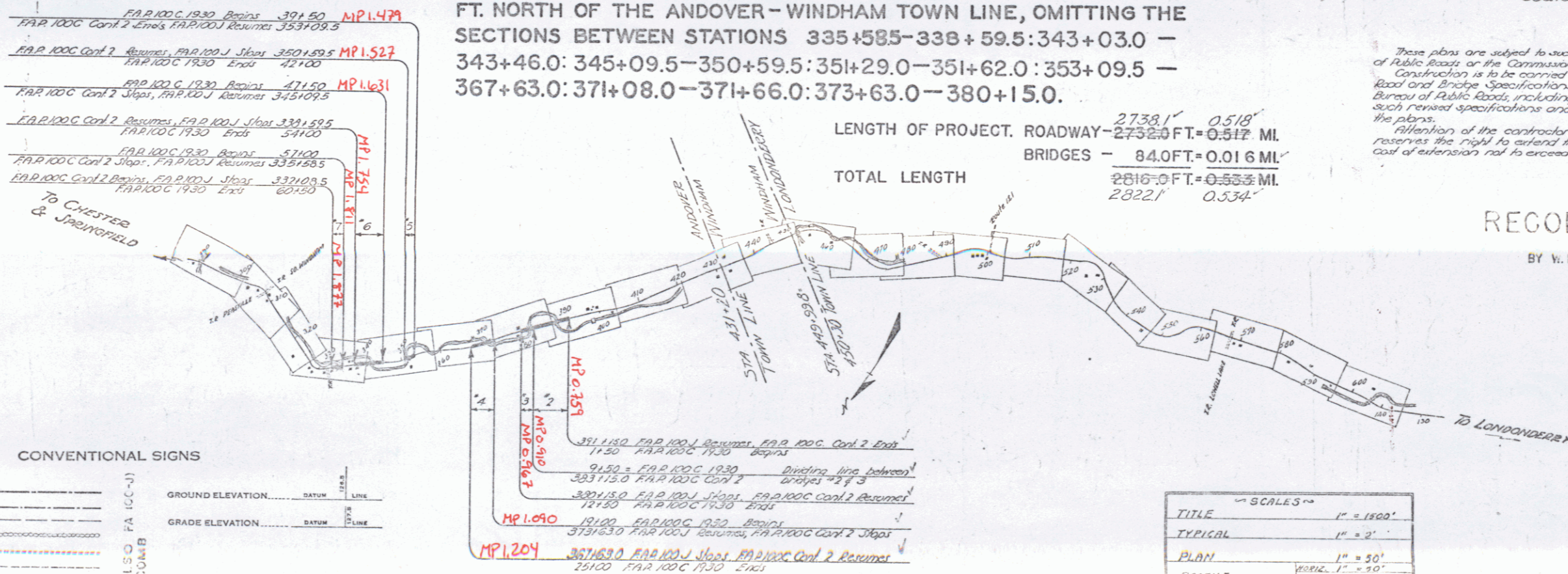
CHESTER-MANCHESTER ROAD

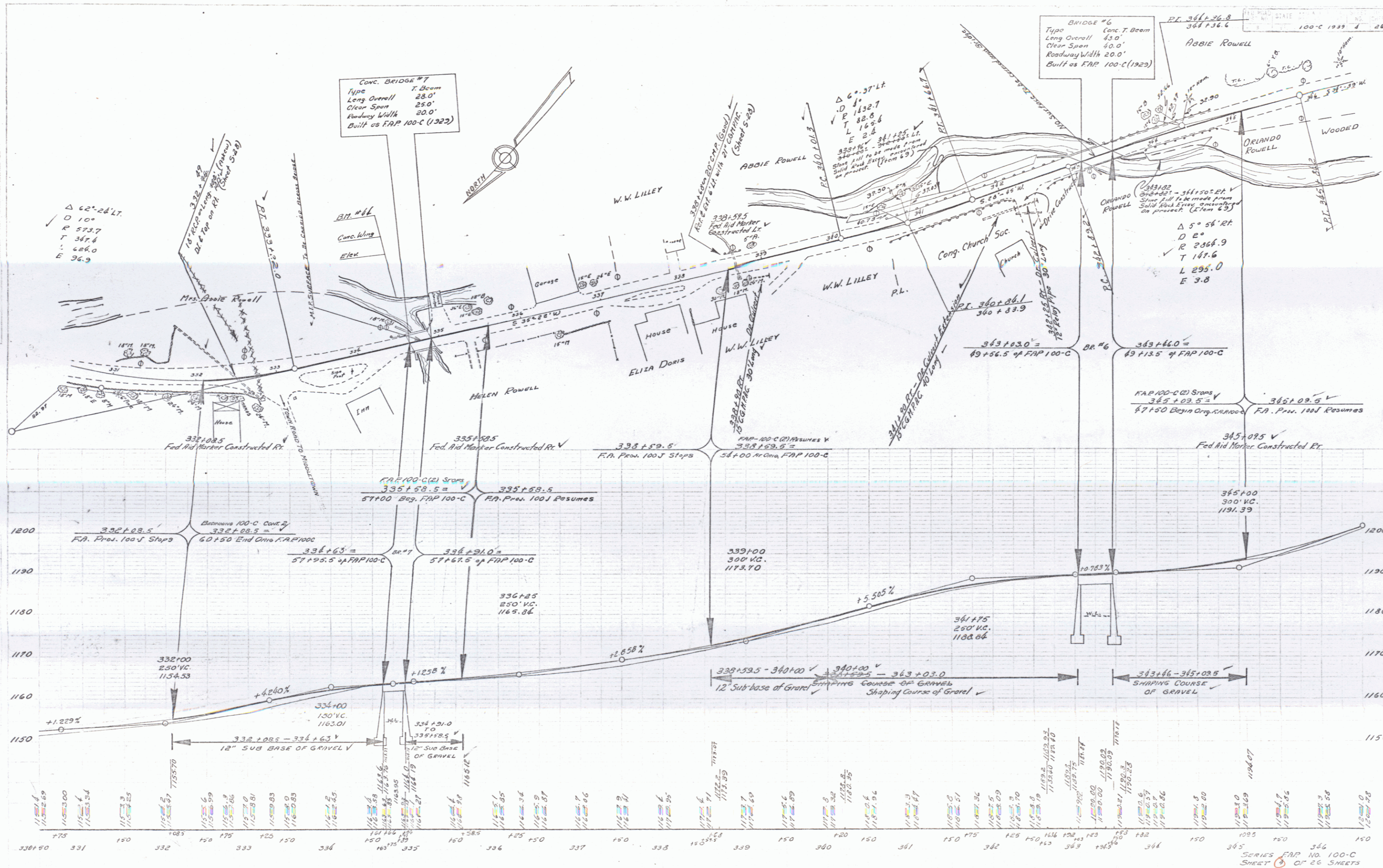
BEGINNING AT A POINT 91.0 FT. NORTHERLY FROM THE INTERSECTION OF THE TOWN ROAD TO MIDDLETOWN IN SIMONSVILLE (SURV. STATION 332+08.5) AND RUNNING SOUTHERLY 5906.5 FT. TO A POINT 4005.0 FT. NORTH OF THE ANDOVER-WINDHAM TOWN LINE, OMITTING THE SECTIONS BETWEEN STATIONS 335+58.5-338+59.5:343+03.0 - 343+46.0: 345+09.5-350+59.5: 351+29.0-351+62.0: 353+09.5 - 367+63.0: 371+08.0-371+66.0: 373+63.0-380+15.0.



These plans are subject to such revisions as may be required by the Bureau of Public Roads or the Commissioner of Highways. Construction is to be carried on in accordance with the plans and Standard Road and Bridge Specifications of 1936 as approved Dec. 29, 1936 by the Bureau of Public Roads, including all subsequent approved revisions and such revised specifications and special provisions as are submitted with the plans. Attention of the contractor is called to the fact the State Highway Board reserves the right to extend this project of the same contract prices. Said cost of extension not to exceed 25% of the amount of the contract.

LENGTH OF PROJECT, ROADWAY - 2738.1' = 0.518 MI.  
BRIDGES - 84.0 FT. = 0.016 MI.  
TOTAL LENGTH 2822.1' = 0.534 MI.





Conv. BRIDGE #7  
 Type T. Beam  
 Long Overall 28.0'  
 Clear Span 25.0'  
 Roadway Width 20.0'  
 Built as FAP 100-C (1922)

BRIDGE #6  
 Type Conc. T. Beam  
 Long Overall 45.0'  
 Clear Span 40.0'  
 Roadway Width 20.0'  
 Built as FAP 100-C (1922)

$\Delta 62^{\circ} 24' LT.$   
 $D 10'$   
 $R 573.7$   
 $T 347.6$   
 $L 626.0$   
 $E 96.9$

$\Delta 5^{\circ} 56' RT.$   
 $D 2'$   
 $R 2368.9$   
 $T 147.6$   
 $L 295.0$   
 $E 3.8$

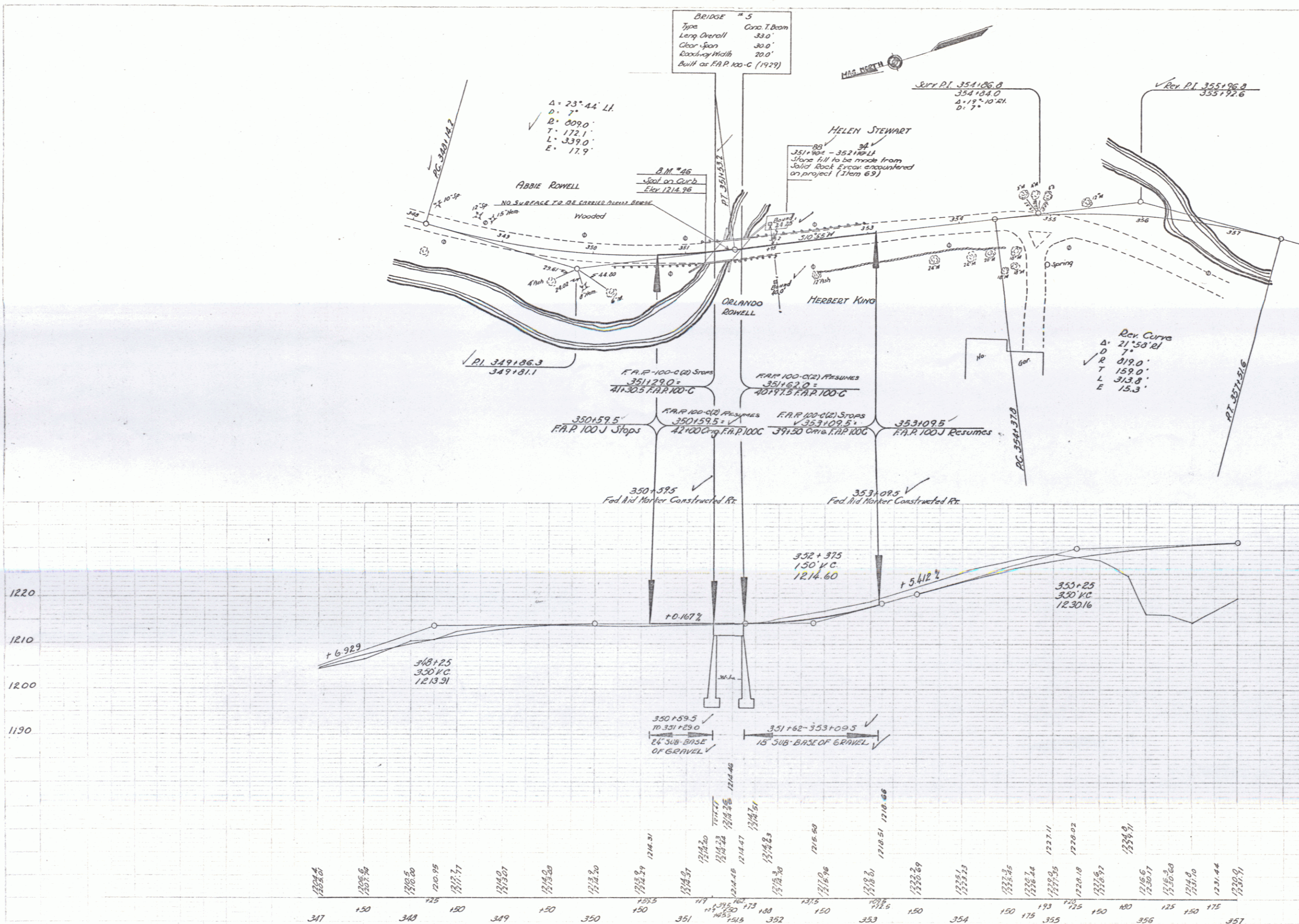
SCALE 1" = 100'-0"  
 100-C 1922 4 26

SERIES FAP NO. 100-C  
 SHEET 2 OF 26 SHEETS

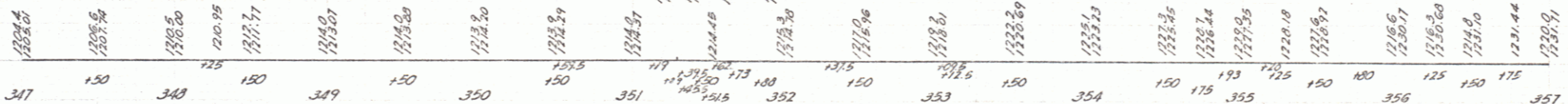
**BRIDGE # 5**  
 Type Conc. T. Beam  
 Long Overall 33.0'  
 Clear Span 30.0'  
 Roadway Width 20.0'  
 Built as F.A.P. 100-C (1929)



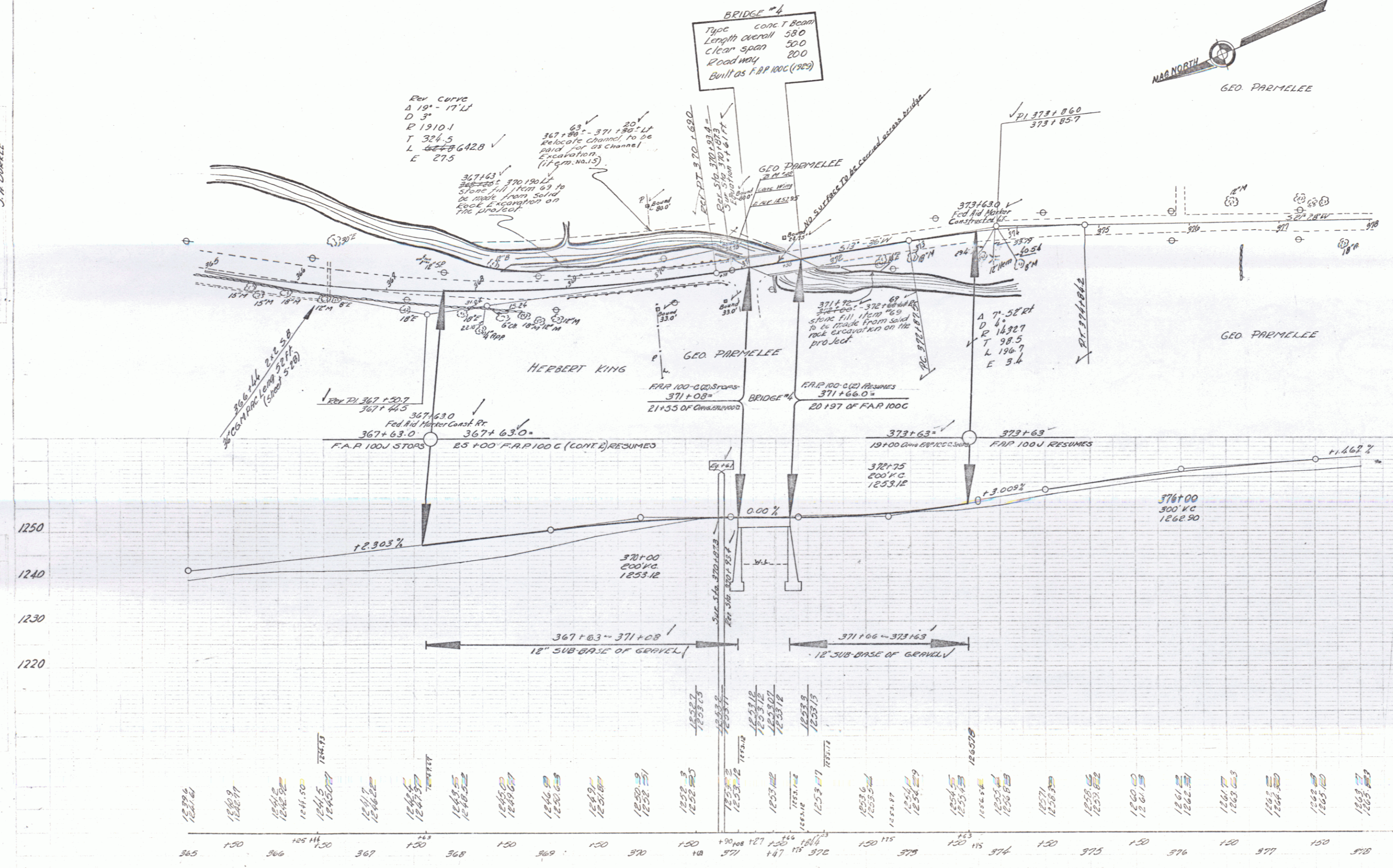
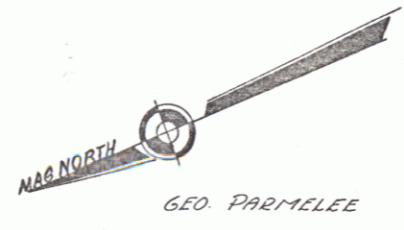
PLAN  
 DISTRICT  
 STATE  
 FEDERAL  
 PROJECT  
 SHEET  
 TOTAL  
 NO. NO. YEAR NO. SHEETS  
 100-C-1939 5 26



1220  
 1210  
 1200  
 1190



P.O. WOOD  
J.A. DURKEE



2.0" x .45" PRINT SPOT ON CONC BRIDGE WING 13.47 STA 370+90 ELEV 12.52 95



**SECTION B-2**  
**CABLE GUARD RAIL REQUIRED**  
 RIGHT TO STA 7+00 350 LIN FT  
 LEFT TO STA 4+55 65 LIN FT  
 TOTAL 415 LIN FT

BEGINNING OF SECTION B-2  
 STA 1+50

B.M. 4  
 Elev. 500.00  
 4' Stone

All material between abutments and in front of wings shall be excavated to Elev. 489.00 and shall be paid for under item of Structure Excavation.

**SECTION B-2**  
**SUMMARY OF QUANTITIES**

ITEM No 10-1	COMMON EXCAVATION INCL. BORROW	2962 CU YDS
" 15	STRUCTURE EXCAVATION	589 CU YDS
" 20A	GRAVEL SURFACE COURSE	500 CU YDS
" 34A	CONCRETE CLASS A(1-2-4)	31.4 CU YDS
" 34B	CONCRETE CLASS B(1-2-3)	290 CU YDS
" 35	REINFORCING STEEL	8,910 POUNDS
" 67	CABLE GUARD RAIL	415 LIN FT
	MAINTAINING TRAFFIC AND REMOVING PRESENT SUPERSTRUCTURE AND FLOORS	1 LUMP SUM

- SECTION B-2**  
**SHEETS TO BE USED**
- PLAN AND PROFILE CROSS SECTIONS
  - OPEN SHEET
  - SECTION OF IMPROVEMENT - 24' GRAVEL
  - NO. 25 SPAN, TIE BEAM WITH GRAVEL
  - SKEW ENDS 15'
  - TYPICAL DETAILS
  - TYPICAL DETAILS
  - CABLE RAIL AND CURB
  - 15' SKEW 14' ABUTMENTS
  - STANDARD STRUCTURES

BEGINNING OF SECTION B-2  
 STA 1+50

STA 2+00  
 V.C. 100  
 Elev. 98.00

FACE OF ABUTMENT  
 STA 4+14  
 Roadway Elev. 498.72

FACE OF ABUTMENT  
 STA 4+30  
 Roadway Elev. 498.57

STA 6+25  
 V.C. 250  
 Elev. 99.45

-2.00%      -0.60%      500

Foundations: Heavy Gravel

ANDOVER FAP 100C  
 Lot #11 B 36, B 37, B 38, B 39  
 all over Middle Branch Williams  
 River formerly Pfluger Brook  
 Kitzkegs Bridge Co. 1929  
 B 40 over Lyman Brook  
 This sheet for B-35 over  
 Pfluger Brook.

B.M. 1 Stone 33' Right  
 B.M. 2 Stone wall 17' Left  
 B.M. 3 Birch 5' Right

Elev. 500.00  
 Elev. 492.08  
 Elev. 494.60

W 11, B 35 over Middle Branch  
 Williams River  
**BRIDGE NO. 2**  
 OVER  
 PFLUGER BROOK  
 ANDOVER, VT.  
 DISTRICT NO. 4

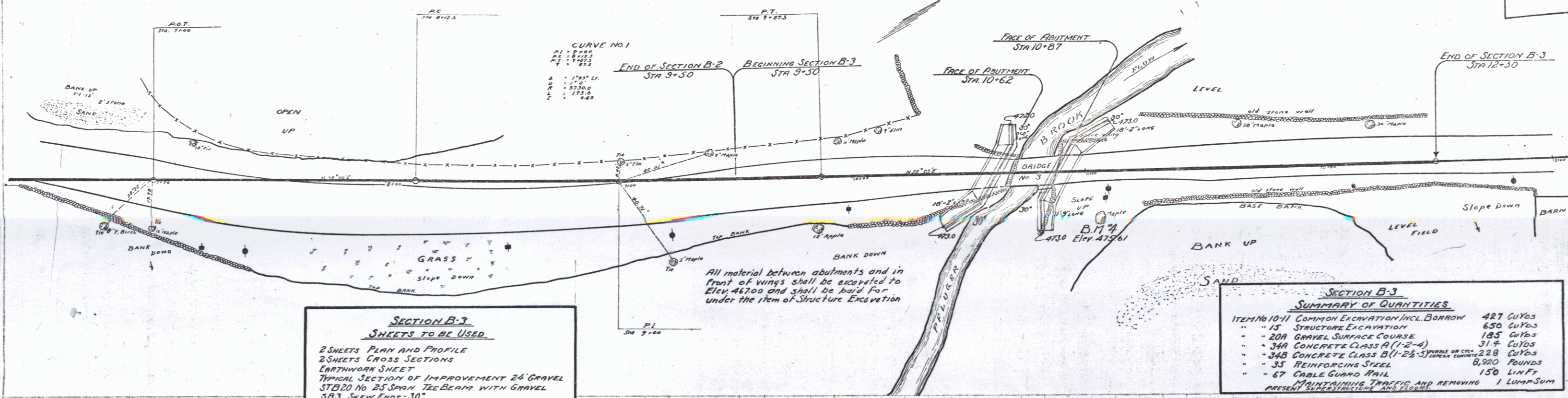
Scale 1"=20ft.

Series F 100C  
 Sheet 5 of 6 Sheets

**SECTION B-3**  
CABLE GUARD RAIL REQUIRED

RIGHT  
TO STA 11+05 = 75 LIN.FT.  
LEFT  
TO STA 11+15 = 75 LIN.FT.  
TOTAL 150 LIN.FT.

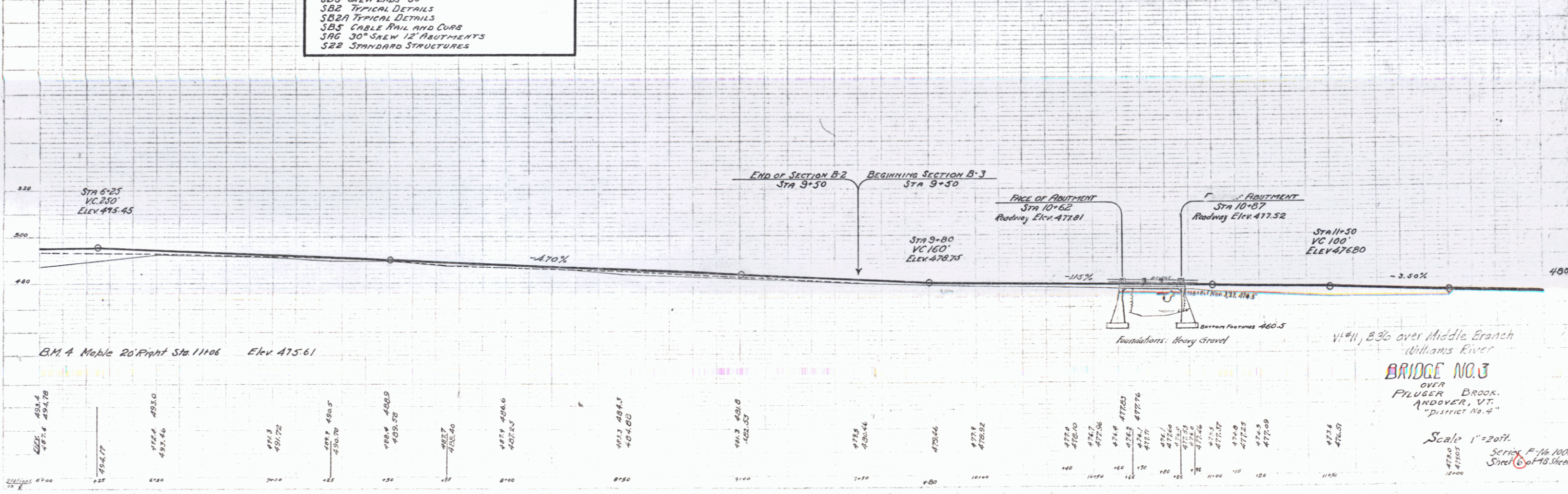
1000 1000 1 70



**SECTION B-3**  
**SHEETS TO BE USED**  
2 SHEETS PLAN AND PROFILE  
2 SHEETS CROSS SECTIONS  
EARTHWORK SHEET  
TYPICAL SECTION OF IMPROVEMENT 24 GRAVEL  
SB20 NO 25 SPARK 12E DEPTH WITH GRAVEL  
SB3 SKEW ENDS 30°  
SB2 TYPICAL DETAILS  
SB2A TYPICAL DETAILS  
SB5 CABLE RAIL AND CURB  
SAG 30° SKEW 12' ABUTMENTS  
SB2 STANDARD STRUCTURES

**SECTION B-3**  
**SUMMARY OF QUANTITIES**

ITEM NO 10-11 COMMON EXCAVATION INCL BORROW	427 CU YDS
" " " 15 STRUCTURE EXCAVATION	650 CU YDS
" " " 20A GRAVEL SURFACE COURSE	185 CU YDS
" " " 34A CONCRETE CLASS A (1-2-4)	31.4 CU YDS
" " " 34B CONCRETE CLASS B (1-2-5) (FORMS ON SITE)	228 CU YDS
" " " 35 REINFORCING STEEL	8,900 POUNDS
" " " 67 CABLE GUARD RAIL	150 LIN.FT.
MAINTAINING TRAFFIC AND REMOVING 1 LUMP SUM PRESENT SUPERSTRUCTURE AND FLOOR	



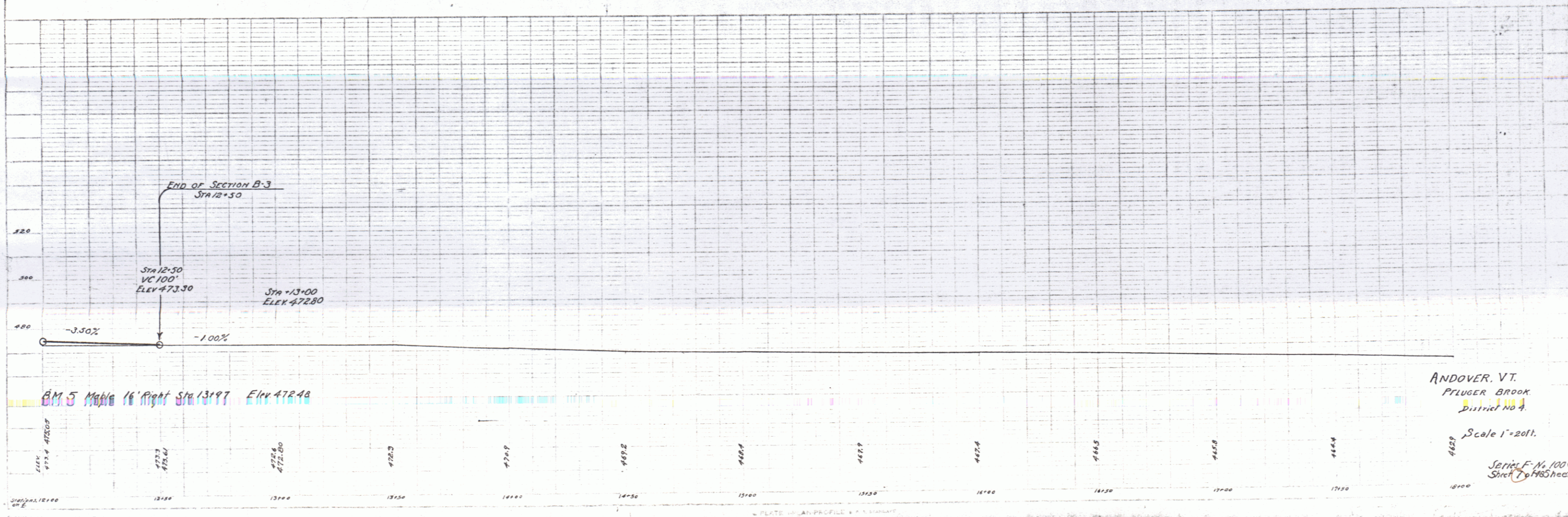
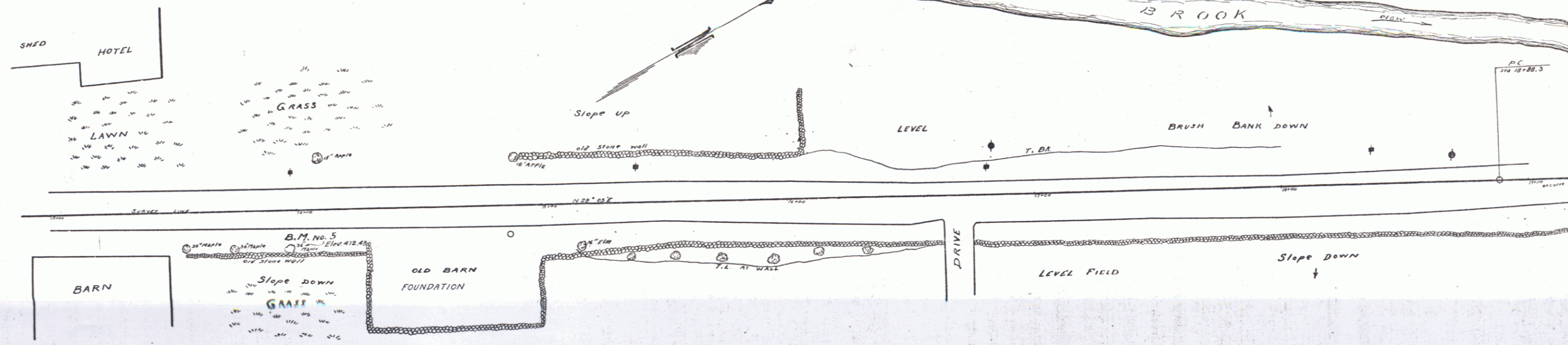
**BRIDGE NO. 3**  
OVER BROOK  
ANDOVER, VT.  
DISTRICT NO. 4

Scale 1" = 20 FT.  
Series F-16 1000  
Sheet 6 of 13 Sheets

PLAN  
SCALE 1" = 40 FT.

PROFILE  
SCALE 1" = 10 FT.

1000 1129 7 90



ANDOVER, VT.  
 FLUGER BROOK  
 District No. 4.  
 Scale 1"=20ft.  
 Series F-1, 100C  
 Sheet 7 of 148 sheets

RIPRAP FOR BANK PROTECTION REQUIRED  
 LEET  
 STA 19+30 TO STA 20+32 - 30 CURS

BRIDGE IS AT VT-11 R1B L13  
 STA 59+33

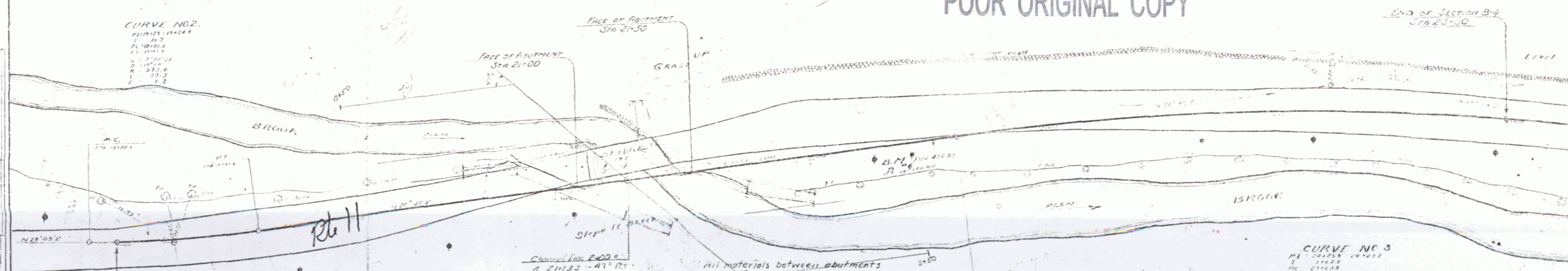
GRAVEL SURFACE COURSE REQUIRED  
 ESTIMATED QUANTITIES 375 CURS

CABLE GUARD RAIL REQUIRED  
 LEET  
 STA 19+00 TO STA 23+50 - 450 LINE FT  
 STA 20+50 TO STA 24+50 - 400 LINE FT  
 TOTAL 850 LINE FT

1544  
 1756

POOR ORIGINAL COPY

CURVE NO. 2  
 PVI 19+24.3  
 P 18.0  
 R 110.0  
 L 11.2



PLAN

DATE	11/22/24
BY	W. J. [unclear]
CHECKED BY	[unclear]
APPROVED BY	[unclear]
SCALE	AS SHOWN

- CROSS SECTION CHANNEL LINE EVERY 25' SECTION AT LEAST 30' APART.
- RUN IN EXISTING CHANNEL 500' EACH SIDE OF STA 21+25.2 - ROW PROFILE AND SECTION 50' EACH SIDE OF E. THREE SECTIONS @ 30' SPACINGS.
- ACK UP TO DO.

All materials between abutments and in front of wings shall be excavated to Elev 447.00 and shall be paid for under the item of Structure Excavation.

SECTION B-4  
 SUMMARY OF QUANTITIES

Item no. 10-11 Common excavation incl borrow	2140 Cu Yds
15 Structure excavation	1022 Cu Yds
20A Gravel surface course	375 Cu Yds
34-A Concrete class B(1-2-3)	92 Cu Yds
34-B Concrete class B(1-2-3)	428 Cu Yds
35 Reinforcing steel	26,320 Pounds
62 Rip rap for bank protection	50 Cu Yds
67 Cable guard rail	850 Line Ft
MAINTENANCE, TRAFFIC, AND RESUMING	1 Lump Sum

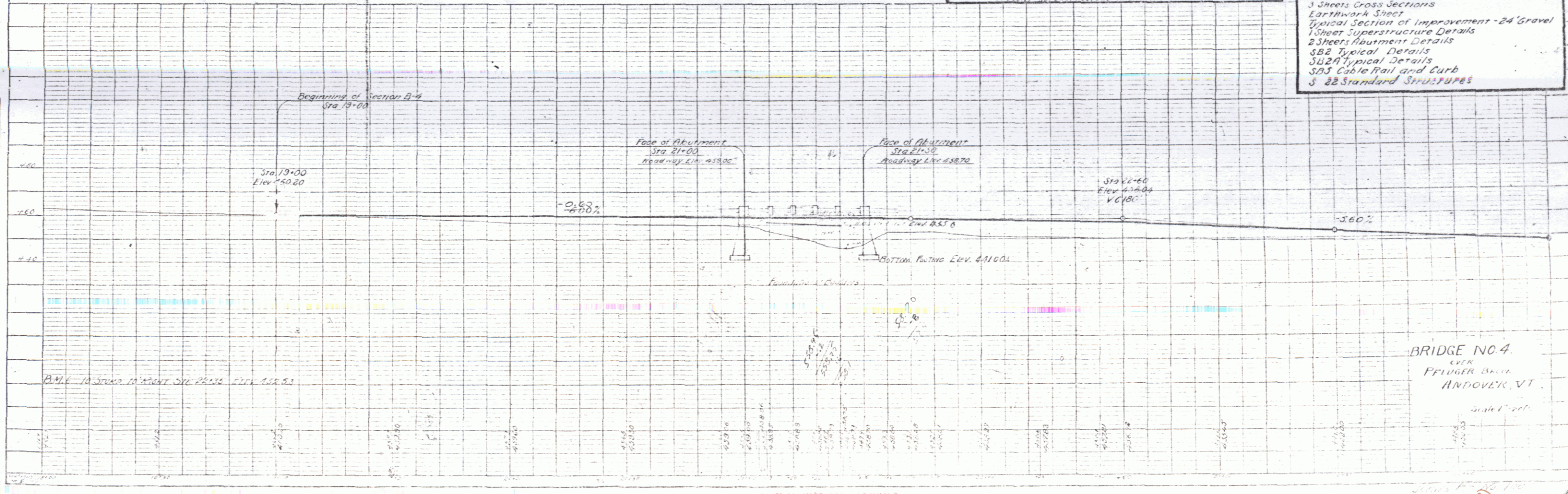
CURVE NO. 3  
 PVI 23+11.0  
 P 12.0  
 R 110.0  
 L 11.2

SECTION B-4  
 SHEETS TO BE USED

2	Sheets Plan and Profile
3	Sheets Cross Sections
1	Earthwork Sheet
1	General Section of Improvement - 24' Gravel
1	Sheet Superstructure Details
2	Sheet Abutment Details
2	SB2 Typical Details
2	SB2A Typical Details
3	SD3 Cable Rail and Curb
3	SB Standard Structures

PROFILE

DATE	11/22/24
BY	W. J. [unclear]
CHECKED BY	[unclear]
APPROVED BY	[unclear]
SCALE	AS SHOWN

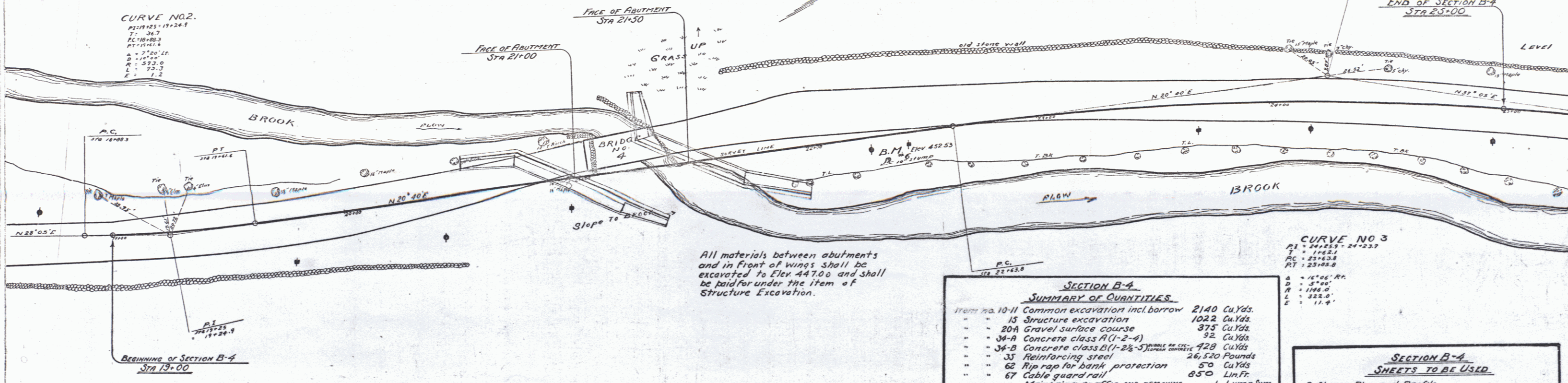


BRIDGE NO. 4  
 OVER  
 PFLUGER BROOK  
 ANDOVER, VT.

**RIPRAP FOR BANK PROTECTION REQUIRED**  
LEFT  
Sta 18+30 to Sta 20+50 = 50 CuYds

**GRAVEL SURFACE COURSE REQUIRED**  
ESTIMATED QUANTITY 375 CuYds

**CABLE GUARD RAIL REQUIRED**  
LEFT  
Sta 19+00 to Sta 23+50 = 450 Lin.Ft.  
RIGHT  
Sta 20+50 to Sta 24+50 = 400 Lin.Ft.  
Total 850 Lin.Ft.



**CURVE NO. 2.**  
P.I. 19+25.1  
P.C. 18+85.3  
P.T. 19+64.9  
R = 174.0  
Δ = 18° 00' 00"  
L = 57.2

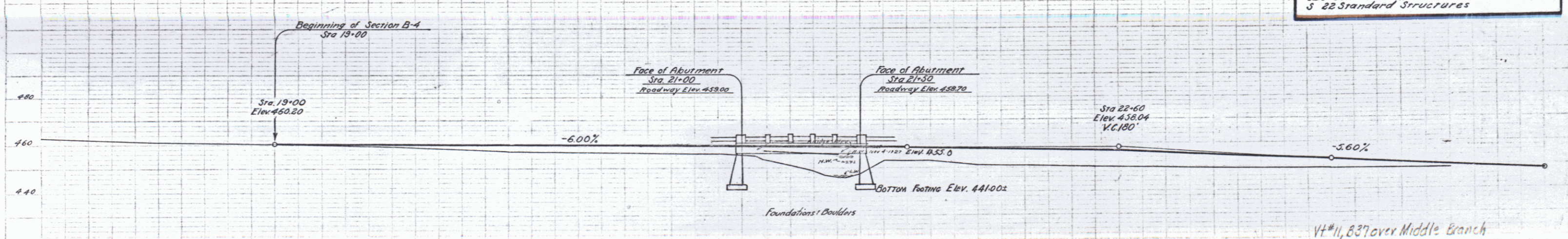
**CURVE NO. 3**  
P.I. 24+25.7  
P.C. 23+63.8  
P.T. 24+89.6  
R = 156.0  
Δ = 5° 00' 00"  
L = 22.0

**SECTION B-4**  
**SUMMARY OF QUANTITIES**

10-11 Common excavation incl. borrow	2140 Cu.Yds.
15 Structure excavation	1022 Cu.Yds.
20A Gravel surface course	375 Cu.Yds.
34-A Concrete class A (1-2-4)	32 Cu.Yds.
34-B Concrete class B (1-2-3) same as class A	428 Cu.Yds.
35 Reinforcing steel	26,520 Pounds
62 Rip rap for bank protection	50 Cu.Yds.
67 Cable guard rail	850 Lin.Ft.
Maintaining Traffic and Removing Prestressing Cables and Elements	1 Lump Sum

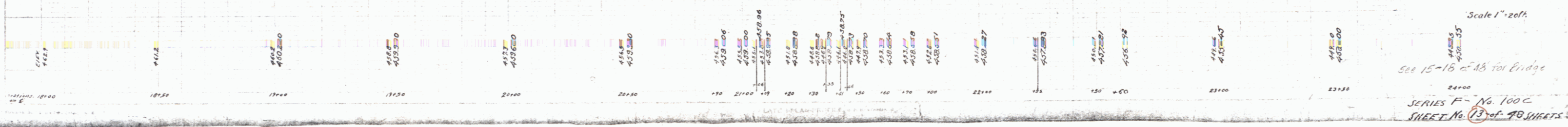
**SECTION B-4**  
**SHEETS TO BE USED**

- 2 Sheets Plan and Profile
- 3 Sheets Cross Sections
- Earthwork Sheet
- Typical Section of Improvement - 24' Gravel
- 1 Sheet Superstructure Details
- 2 Sheets Abutment Details
- SB2 Typical Details
- SB2A Typical Details
- SB5 Cable Rail and Curb
- 5 22 Standard Structures



B.M. 6 10' Stump 10' Right Sta. 22+35 Elev. 452.53

V#11, 837 over Middle Branch  
Williams River  
Repaired as BMA 6136  
in 1970 (Forced Account)  
**BRIDGE NO. 4.**  
OVER  
PFLUGER BROOK  
ANDOVER, VT.



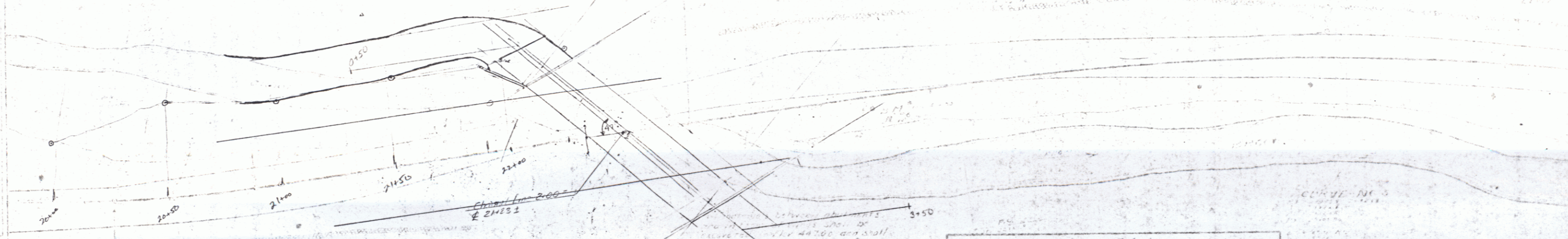
Scale 1" = 20'  
See 15-16 of AB for Bridge  
SERIES F- No. 100C  
SHEET No. 13 of 48 SHEETS

Channel Surveyed on 10/10/50

Channel Width 100 Feet

1. CROSS SECTION CHANNEL LINE EVERY 25' SECTION @ LEAST 50' AT 1 FT.
2. RUN IN EXISTING & BOUNDARY 500' EACH SIDE OF STA 21+23.3 REIN PROFILE INTO SECTION 50' EACH SIDE OF E. TAKE SECTIONS @ 50' INTERVALS.
3. PICK UP TOPO

POOR ORIGINAL COPY



SECTION 5-0

SUMMARY OF QUANTITIES

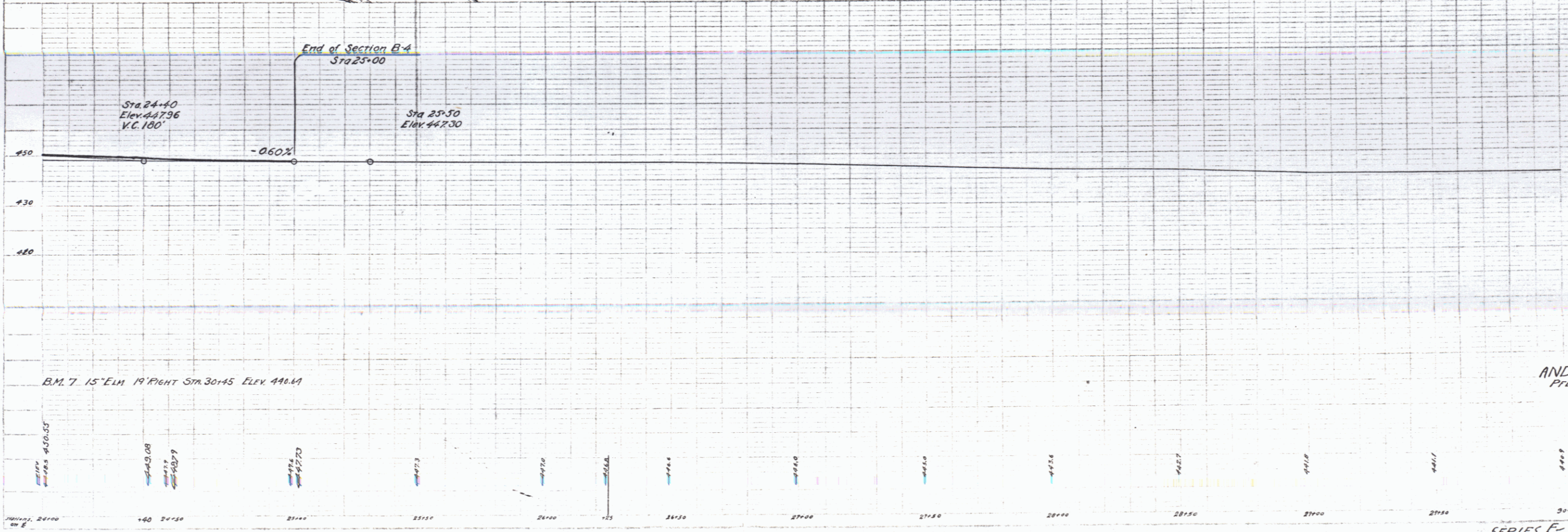
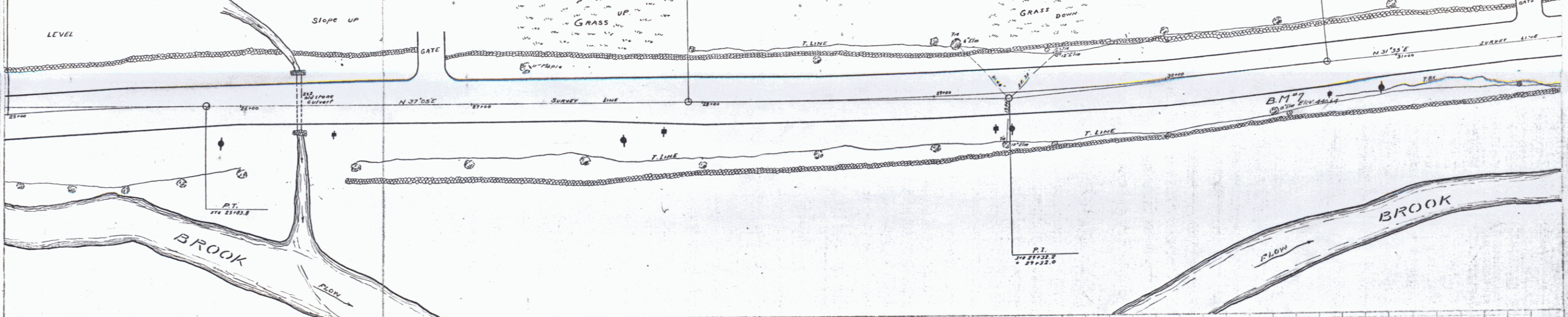
1. Channel Excavation	2,400 cu yd
2. Structure Excavation	1,000 cu yd
3. Gravel Surface Course	1,100 cu yd
4. Concrete Class (1:2:4)	12,000 cu yd
5. Concrete Class (1:2:2-1/2)	1,200 cu yd
6. Reinforcing Steel	26,100 lbs
7. Top Iron for Bank Protection	850 lbs
8. Cable Guard Rail	1,000 lbs
9. Manhole	1

- SECTION 5-0 SHEET 10 OF 10 USED
- 1. Channel Profile
  - 2. Cross Section
  - 3. Right of Way
  - 4. Section of Improvements
  - 5. Sheet Construction Details
  - 6. Sheet Construction Details
  - 7. Sheet Construction Details
  - 8. Sheet Construction Details
  - 9. Sheet Construction Details

1000 1923 1/4 50

CURVE NO. 4  
P.I. 21+32.0  
T 17.34  
PC 21+14.6  
PT 21+49.4  
A 51.36'  
D 125.00'  
R 1985.0  
L 175.0  
E 3.3

END OF SECTION B-4  
Sta 23+00



PLAN  
NOTE FROM  
NO.

Profile  
11/18/24

ANDOVER, VT.  
PFLUGER BROOK  
District No. 4  
Scale 1"=200'

SERIES F- No. 100 C  
F-4A DERTS

SECTION R-1  
SHEETS TO BE USED  
2 SHEETS PLAN AND PROFILE  
2 GROSS SECTIONS  
EARTHWORK SHEET  
TYPICAL SECTION OF IMPROVEMENT 24" GRAVEL

100. 1929 23 40  
SHED HOUSE

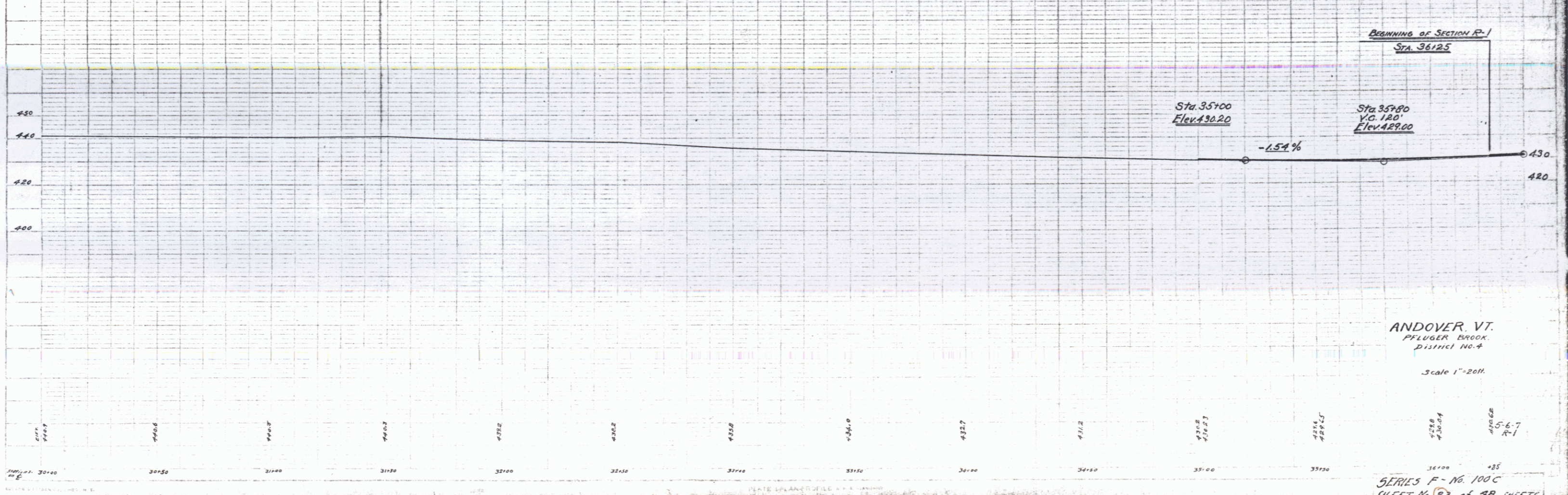
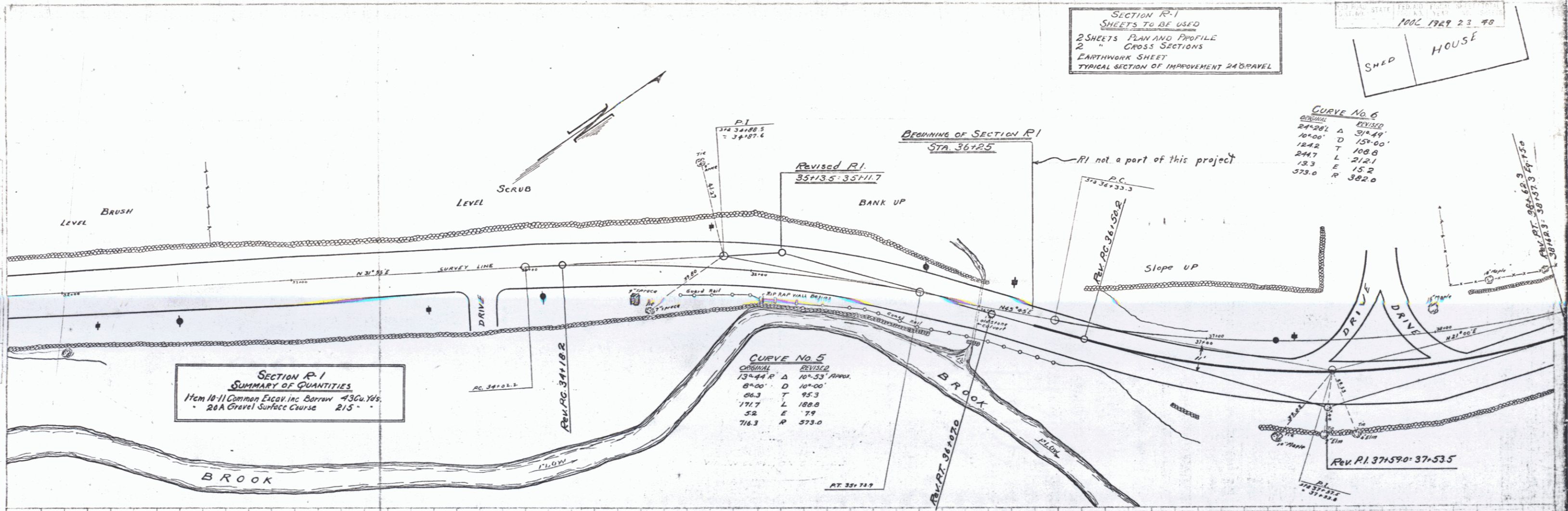
CURVE No. 6

ORIGINAL	REVISED
24°28' Δ	31°49'
1040' D	157°00'
184.7 L	108.8
13.3 E	21.21
573.0 R	15.2
	382.0

SECTION R-1  
SUMMARY OF QUANTITIES  
Item 10-11 Common Excav. in. Borrow 43 Cu. Yds.  
20 A Gravel Surface Course 215

CURVE No. 5

ORIGINAL	REVISED
13°44' Δ	10°53' ANGLE
8°00' D	10°00'
86.3 L	95.3
171.7 L	188.8
52 E	79
716.3 R	573.0



ANDOVER, VT.  
PFLUGER BROOK,  
District No. 4  
Scale 1"=20ft.

SERIES F - No. 100 C  
SHEET No. 23 of 98 SHEETS





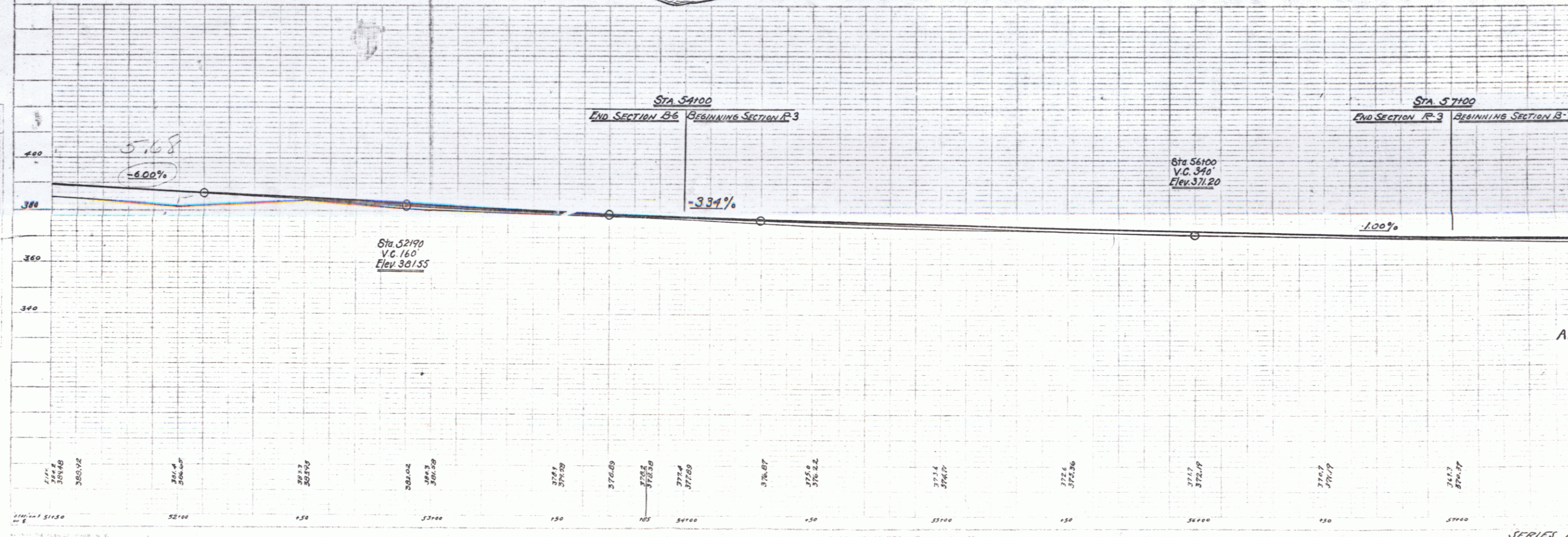
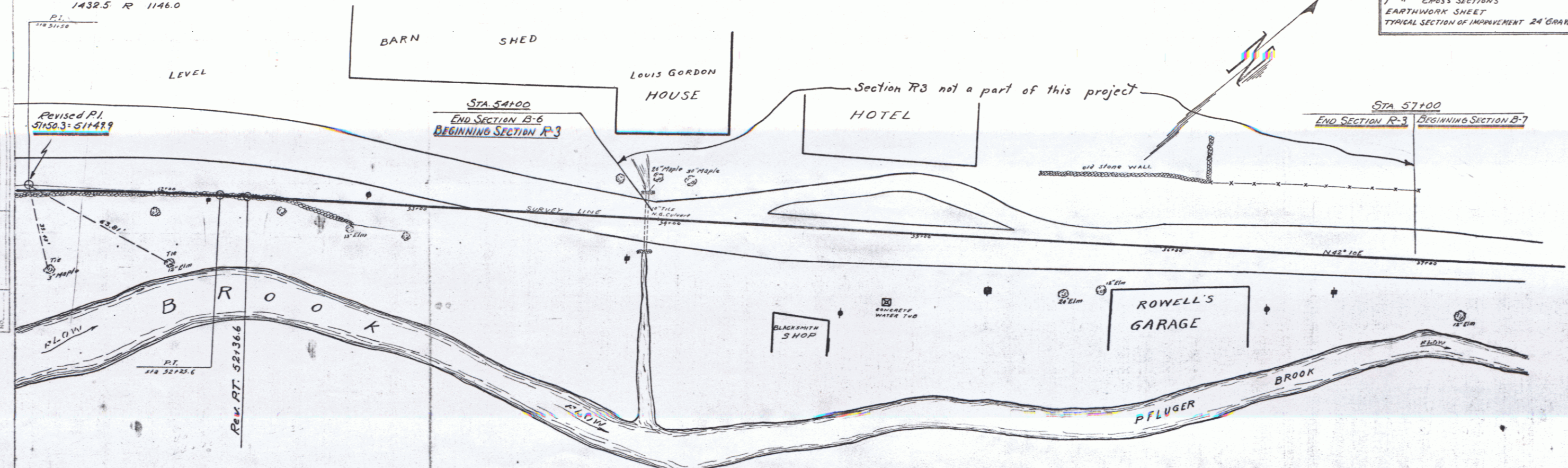
CURVE NO. 9	
ORIGINAL	REVISED
84.03 R	84.39
41.00 D	31.00
75.7 T	66.7
157.3 L	173.6
2.0 E	3.3
1432.5 R	1146.0

SECTION B-6  
NEW CULVERTS REQUIRED  
Sta. 53194 to 54100 Length 906 FT  
Concrete Class III (1-2-4) 2.5 Cu Yds.  
Reinforcing Steel 12.3 Lbs.  
See Street Series S No. 20

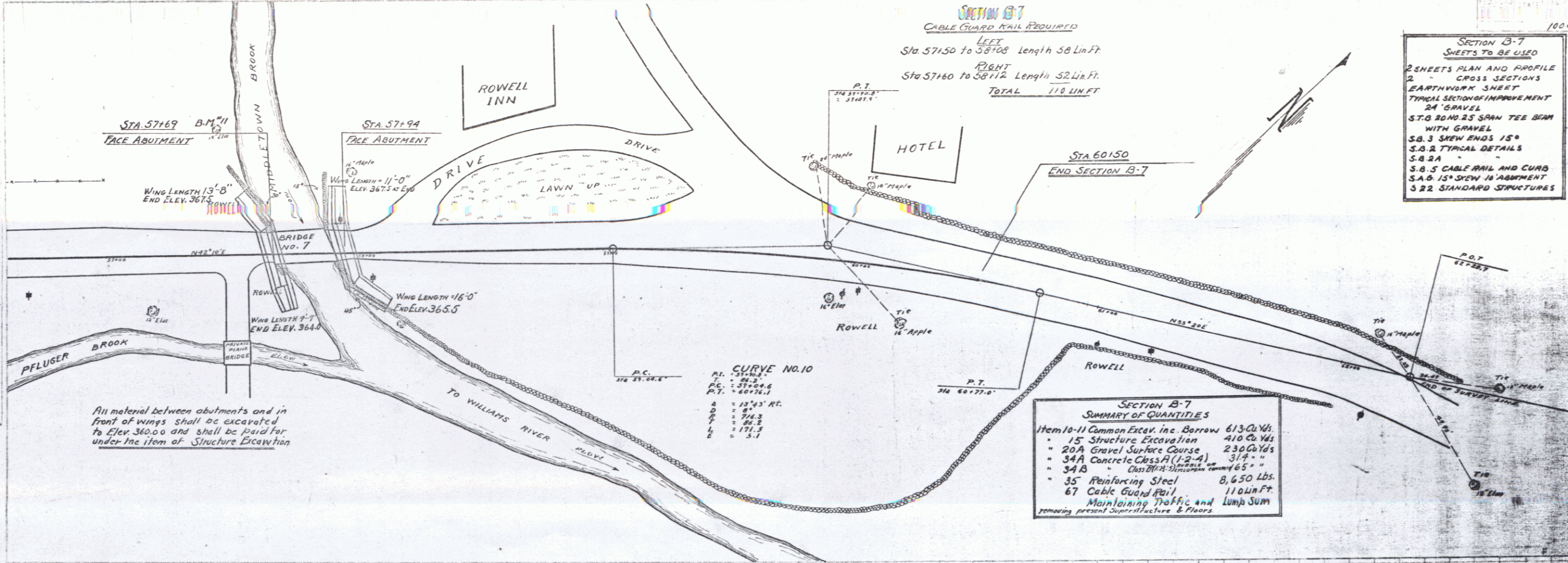
SECTION B-6  
CABLE GUARD RAIL REQUIRED  
LEFT  
Sta. 53182 to 54100 Length 918 Lin. Ft.  
RIGHT  
Sta. 53182 to 54100 " 24 " "  
TOTAL 942 LIN. FT.

SECTION R-3  
SUMMARY OF QUANTITIES  
Item 10-11 Common Excavation 100 Bottom 87 Cu Yds.  
20 A Gravel Surface Course 186 "

SECTION R-3  
SHEETS TO BE USED  
1 SHEET PLAN AND PROFILE  
1 " CROSS SECTIONS  
EARTHWORK SHEET  
TYPICAL SECTION OF IMPROVEMENT 24" GRAVEL



ANDOVER, VT.  
PFLUGER BROOK  
DISTRICT NO. 4  
Scale 1" = 20ft.



**SECTION B-7 SHEETS TO BE USED**  
 2 SHEETS PLAN AND PROFILE  
 2 CROSS SECTIONS  
 1 EARTHWORK SHEET  
 1 TYPICAL SECTION OF IMPROVEMENT  
 24 " GRAVEL  
 S.T.O. ROADS SPAN TEE BEAM WITH GRAVEL  
 S.B. 3 SKEW ENDS 15°  
 S.B. 2 TYPICAL DETAILS  
 S.B. 2A  
 S.B. 5 CABLE RAIL AND CURB  
 S.B. 6 15" SIGN IN MARGINAL  
 3 22 STANDARD STRUCTURES

All material between abutments and in front of wings shall be excavated to Elev. 360.00 and shall be paid for under the item of Structure Excavation

