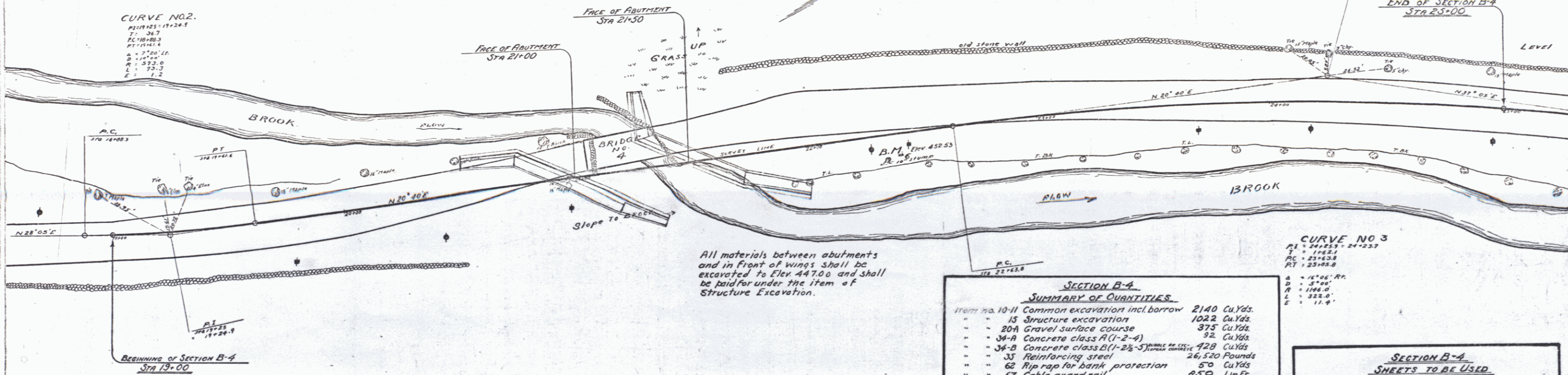


RIPRAP FOR BANK PROTECTION REQUIRED
LEFT
Sta 18+30 to Sta 20+50 = 50 CuYds

GRAVEL SURFACE COURSE REQUIRED
ESTIMATED QUANTITY 375 CuYds

CABLE GUARD RAIL REQUIRED
LEFT
Sta 19+00 to Sta 23+50 = 450 Lin.Ft.
RIGHT
Sta 20+50 to Sta 24+50 = 400 Lin.Ft.
Total 850 Lin.Ft.



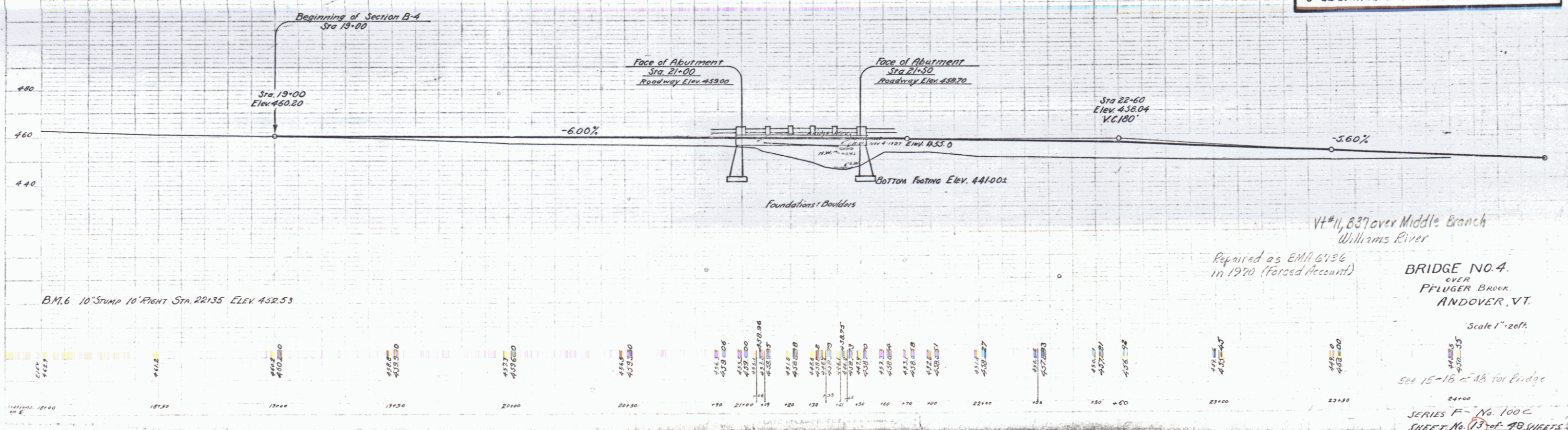
All materials between abutments and in front of wings shall be excavated to Elev. 447.00 and shall be paid for under the item of Structure Excavation.

SECTION B-4
SUMMARY OF QUANTITIES

10-11 Common excavation incl. borrow	2140 Cu.Yds.
15 Structure excavation	1022 Cu.Yds.
20A Gravel surface course	375 Cu.Yds.
34-A Concrete class A (1-2-4)	32 Cu.Yds.
34-B Concrete class B (1-2-3) same as class A	428 Cu.Yds.
35 Reinforcing steel	26,520 Pounds
62 Rip rap for bank protection	50 Cu.Yds.
67 Cable guard rail	850 Lin.Ft.
Maintaining Traffic and Removing Pressure on Structure and Elements	1 Lump Sum

CURVE NO. 3
P1 = 24+25.7
T = 150.0
AC = 23+63.8
PT = 23+00.0
R = 156.0
D = 57.00'
L = 225.0'
E = 11.9'

- SECTION B-4**
SHEETS TO BE USED
- 2 Sheets Plan and Profile
 - 3 Sheets Cross Sections
 - Earthwork Sheet
 - Typical Section of Improvement - 24' Gravel
 - 1 Sheet Superstructure Details
 - 2 Sheets Abutment Details
 - SB2 Typical Details
 - SB2A Typical Details
 - SB5 Cable Rail and Curb
 - 5 22 Standard Structures



B.M. 6 10' Stump 10' Right Sta. 22+35 Elev. 452.53

V#11, 837 over Middle Branch
Williams River
Repaired as BMA 6136
in 1970 (Forced Account)
BRIDGE NO. 4
OVER
PFLUGER BROOK
ANDOVER, VT.

Scale 1" = 20'
See 15-16 of AB for Bridge
SERIES F- No. 100C
SHEET No. 13 of 48 SHEETS