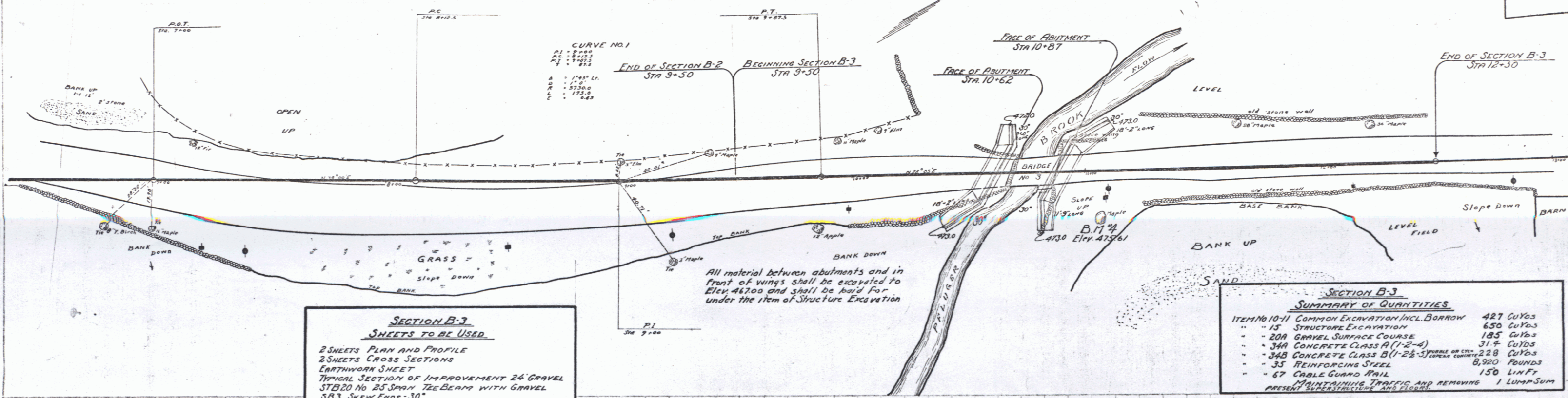


SECTION B-3
CABLE GUARD RAIL REQUIRED

RIGHT
TO STA 11+05 = 75 LIN.FT.
LEFT
TO STA 11+15 = 75 LIN.FT.
TOTAL 150 LIN.FT.

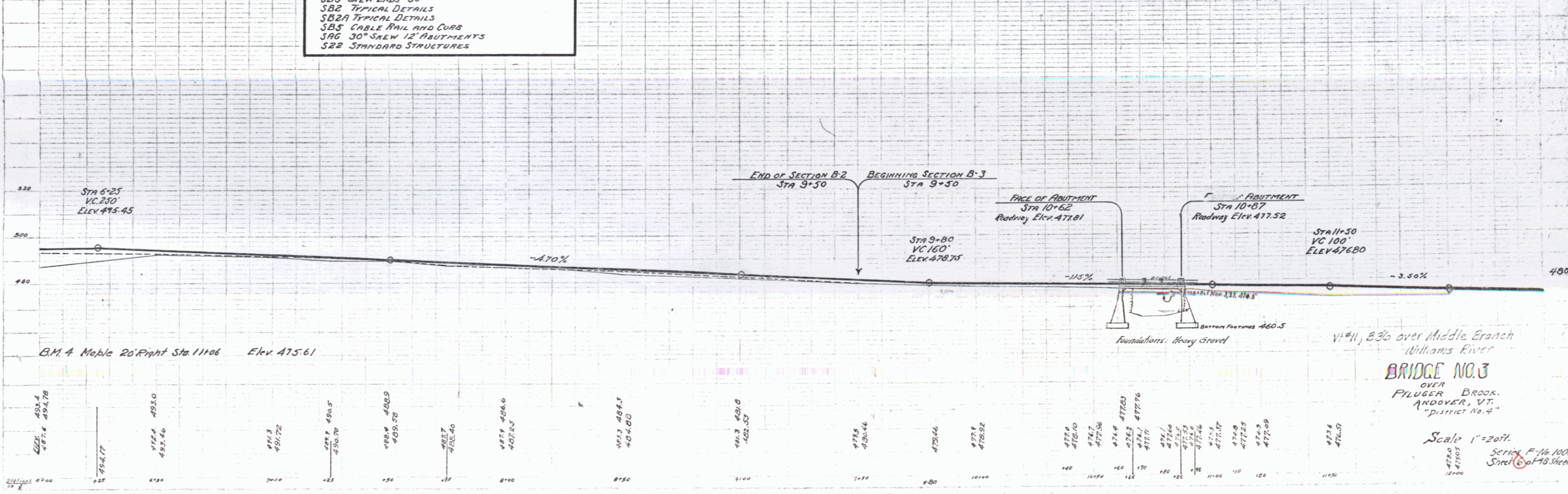
1000 1000 1 70



SECTION B-3
SHEETS TO BE USED
2 SHEETS PLAN AND PROFILE
2 SHEETS CROSS SECTIONS
EARTHWORK SHEET
TYPICAL SECTION OF IMPROVEMENT 24 GRAVEL
STB20 NO 25 SPAN 12E DEEP WITH GRAVEL
SB3 SKEW ENDS 30°
SB2 TYPICAL DETAILS
SB2A TYPICAL DETAILS
SB5 CABLE RAIL AND CURB
SAG 30° SKEW 12' ABUTMENTS
SB2 STANDARD STRUCTURES

SECTION B-3
SUMMARY OF QUANTITIES

| | |
|--|--------------|
| ITEM NO 10-11 COMMON EXCAVATION INCL BORROW | 427 CU YDS |
| " " 15 STRUCTURE EXCAVATION | 650 CU YDS |
| " " 20A GRAVEL SURFACE COURSE | 185 CU YDS |
| " " 34A CONCRETE CLASS A (1-2-4) | 31.4 CU YDS |
| " " 34B CONCRETE CLASS B (1-2-5) (FORMS ON SITE) | 228 CU YDS |
| " " 35 REINFORCING STEEL | 8,900 POUNDS |
| " " 67 CABLE GUARD RAIL | 150 LIN.FT. |
| MAINTAINING TRAFFIC AND REMOVING 1 LUMP SUM | |
| PRESENT SUPERSTRUCTURE AND FLOOR | |



B.M. 4 Maple 26' Right Sta. 11+06 Elev. 475.61

VII#11, B3C over Middle Branch
Williams River
BRIDGE NO. 3
OVER BROOK
PILUGER
ANDOVER, VT.
DISTRICT NO. 4

Scale 1" = 20 FT.
Series F-16 1000
Sheet 6 of 13 Sheets