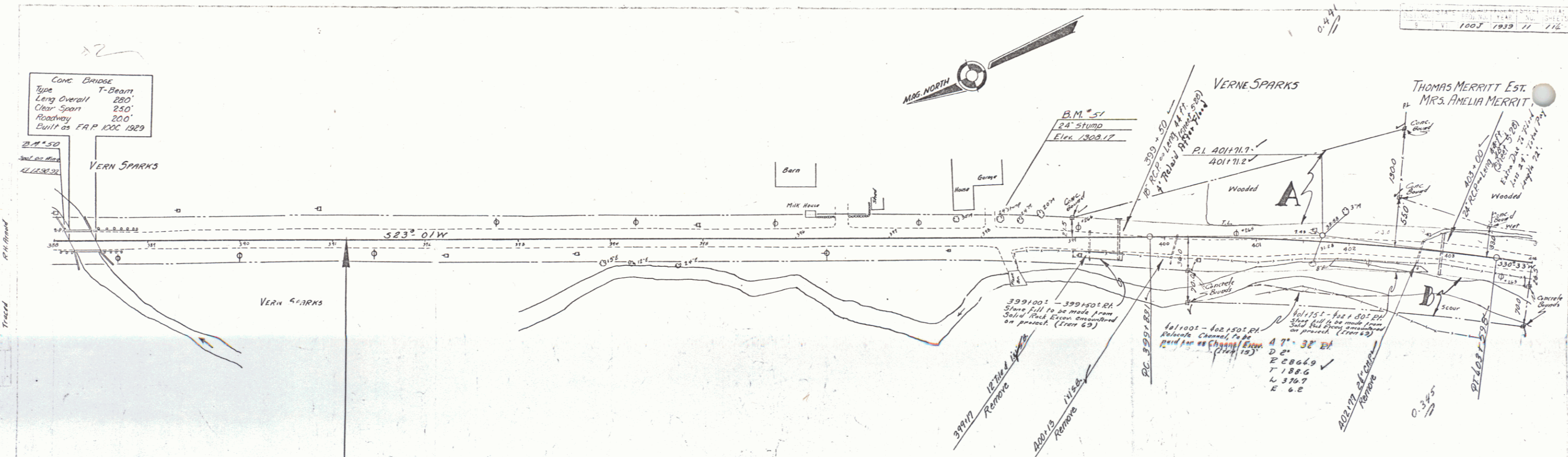
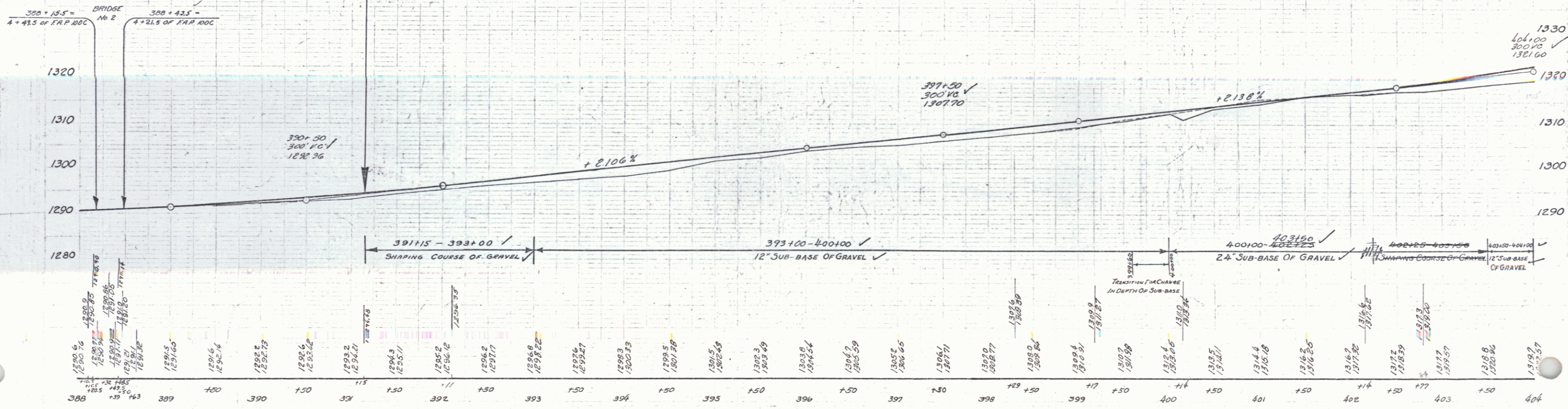


Conc. Bridge  
 Type T-Beam  
 Long Overall 280'  
 Clear Span 250'  
 Roadway 220'  
 Built as F.A.P. 100-C 1929



END OF PAR 100-C (2)	STA 391+15.0	PARCEL INSTRUMENT	DATE	GRANTOR	GRANTEE	RECORDED AND OVER	REMARKS
STA 1+50 OF ORG. PAR 100-C	F.A.P. 100-J Resurvey	A-8	Q.C.D. 7-27-30	VERNE H. & GEORGE M. SPARKS	ST. OF VT.	BOOK PAGE DATE	COLL. AT STA 399+00 & STA 405+70



BM 50 SPOT ON CONC BRIDGE PIERS 13' LEFT 389+10.5 ELEV 1230.32  
 BM 51 SPIRE IN ROOT 24' MAPLE STUMP 17' LT 398+17 ELEV 1308.17

SERIES FOR PAR 100-J  
 SHEET 11 OF 11