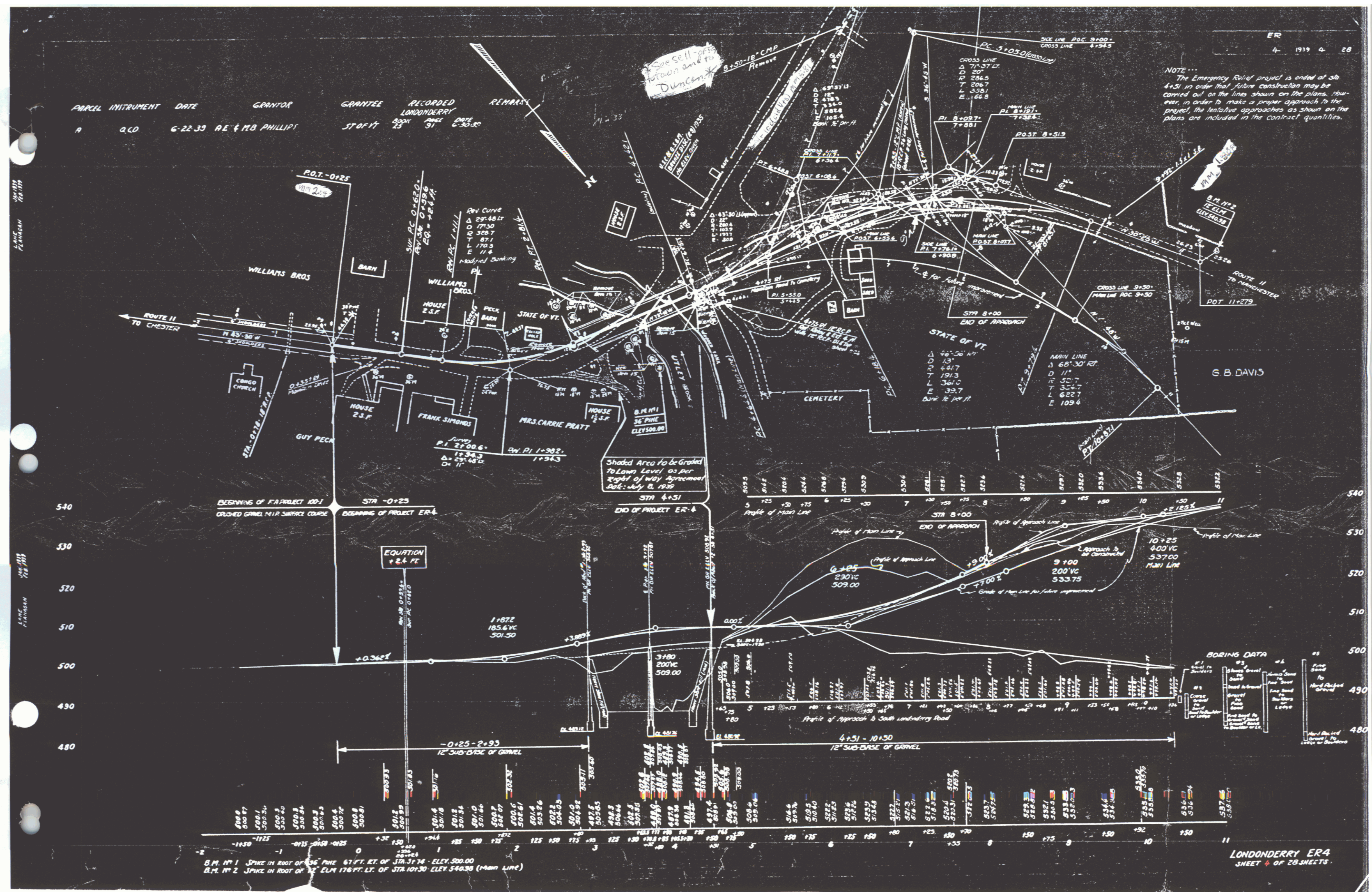


PARCEL INSTRUMENT DATE GRANTOR GRANTEE RECORDED LONDONDERRY REMAINS  
 A 2,60 6-22-33 RE & MB PHILLIPS ST OF VT BOOK PAGE DATE  
 25 31 6-30-30

ER  
 4 1939 4 28

NOTE...  
 The Emergency Relief project is ended at Sta 4+31 in order that future construction may be carried out on the line shown on the plans. However, in order to make a proper approach to the project, the tentative approaches as shown on the plans are included in the contract quantities.



LONDONDERRY ER4  
 SHEET 4 OF 28 SHEETS