

Londonderry 48

INDEX OF SHEETS

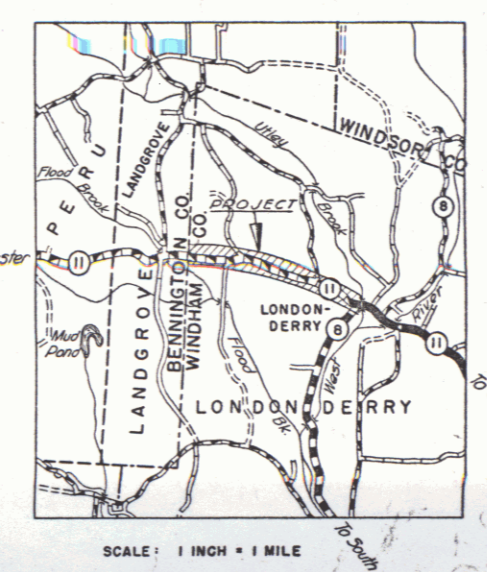
SHEET NO. 1	TITLE PAGE
2	TYPICAL CROSS-SECTION OF IMPROVEMENT (2% CRUSHED GRAVEL MIXED IN PLACE SURFACE COURSE WITH CUTBACK ASPHALT & PRIME COAT OF REFINED TAR, ITEMS 26,30 & 3)
3	BANKING AND WIDENING TABLES
4	PLAN AND PROFILE
13	STANDARD STRUCTURE SHEET S 28 PIPE CULVERTS
14	" " " " S 30A BOUNDARY MARKERS
15	" " " " S 40 BARRICADES, SIGNS & LIGHTS
16	" " " " S 41 TYPICAL GRADING
17	" " " " S 49-46 SPRING MOUNTED PANEL TYPE GUARD RAIL WITH STEEL POSTS
18-52	CROSS SECTIONS

STANDARD STRUCTURE SHEETS APPROVED BY THE CHIEF ENGINEER VERMONT STATE DEPARTMENT OF HIGHWAYS

S-28	APRIL 26, 1941
S-30A	APRIL 19, 1941
S-40	DECEMBER 18, 1945
S-49-46	JANUARY 13, 1947

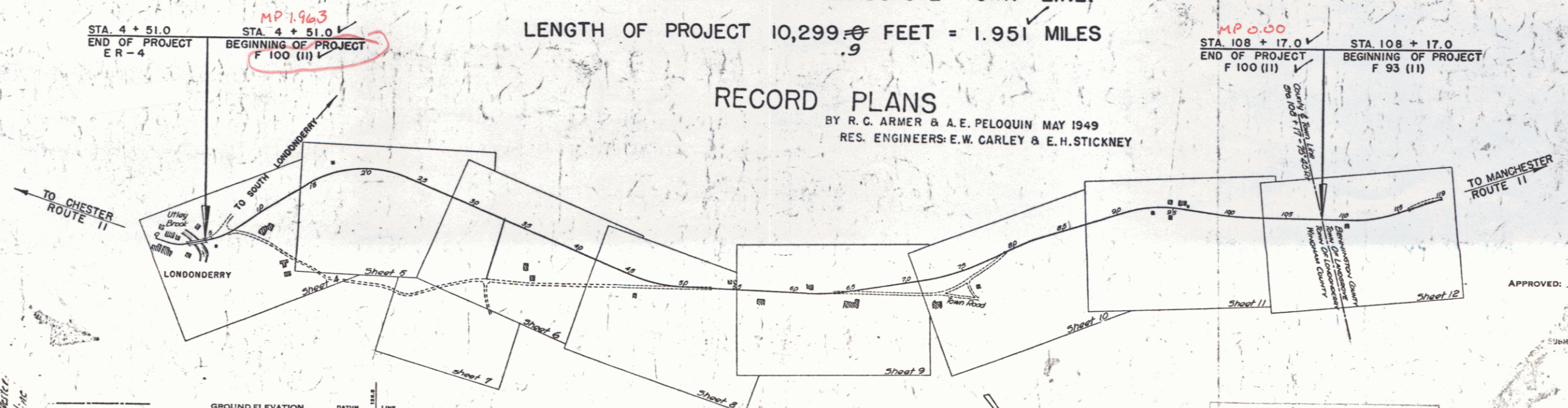
STATE OF VERMONT
STATE HIGHWAY DEPARTMENT
PLAN AND PROFILE OF PROPOSED STATE HIGHWAY
FEDERAL AID PROJECT
TOWN OF LONDONDERRY
ROUTE 11
LONDONDERRY - MANCHESTER ROAD

FED. ROAD DIST. NO.	STATE	FED. AID PROJ. NO.	FISCAL YEAR	SHEET NO.	TOTAL SHEETS
9	Vt.	F 100 (1)	1947	1	52



BEGINNING AT THE WEST END OF THE CONCRETE BRIDGE, 100 FEET EAST OF THE JUNCTION OF ROUTES 8 AND 11 IN LONDONDERRY VILLAGE AND EXTENDING WESTERLY 1.951 MILES TO THE LONDONDERRY-LANDGROVE TOWN LINE,
LENGTH OF PROJECT 10,299 FEET = 1.951 MILES

RECORD PLANS
BY R. C. ARMER & A. E. PELOQUIN MAY 1949
RES. ENGINEERS: E. W. CARLEY & E. H. STICKNEY



Crushed Gravel MIP
COMPLETION YEAR 1947
LOCATION: 100 ft. East of the junction of Route 8 & 11 in Londonderry Village and extending West 1.951 miles to Londonderry - Landgrove line

GROUND ELEVATION - DATUM - LINE

GRADE ELEVATION - DATUM - LINE

CURVE DATA

DEFLECTION ANGLE	Δ
DEGREE OF CURVE	D
RADIUS OF CURVE	R
TANGENT DISTANCE	T
LENGTH OF CURVE	L
EXTERNAL DISTANCE	E
POINT OF INTERSECTION	P. I.
POINT OF CURVE	P. C.
POINT OF TANGENT	P. T.
POINT ON TANGENT	P. O. T.

SCALES

TITLE	1" = 500'
TYPICAL	1" = 2'
PLAN	1" = 50'
PROFILE	HORIZONTAL 1" = 50'
	VERTICAL 1" = 10'
CROSS SECTIONS	1" = 5'

THESE PLANS ARE SUBJECT TO SUCH REVISIONS AS MAY BE REQUIRED BY THE PUBLIC ROADS ADMINISTRATION OR THE COMMISSIONER OF HIGHWAYS.

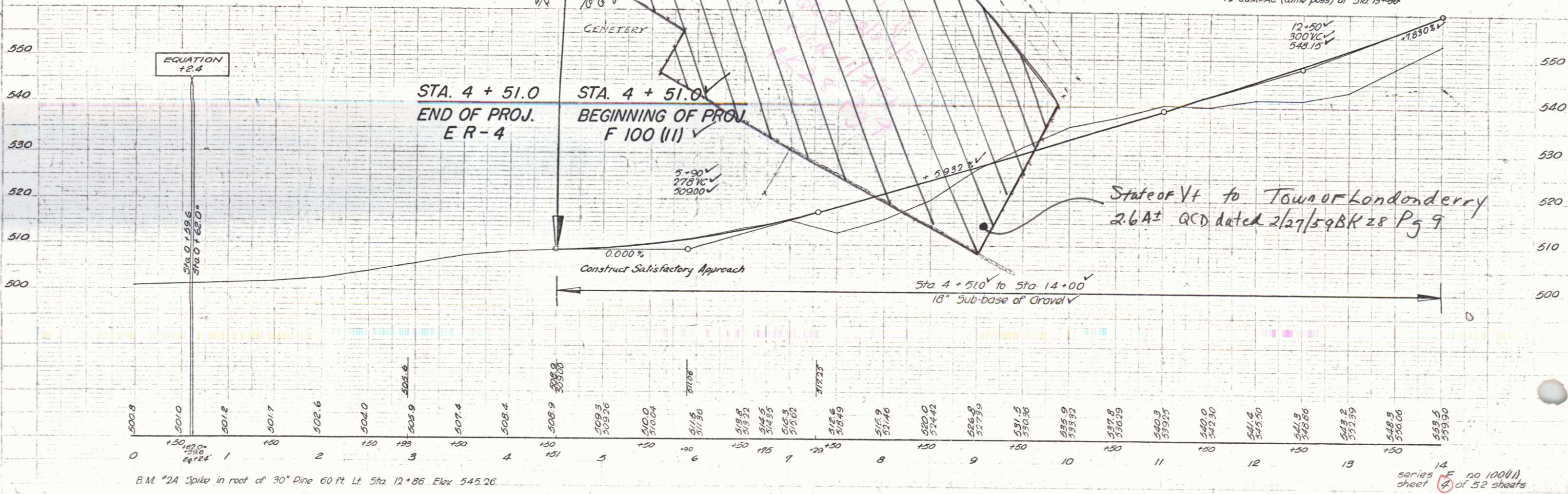
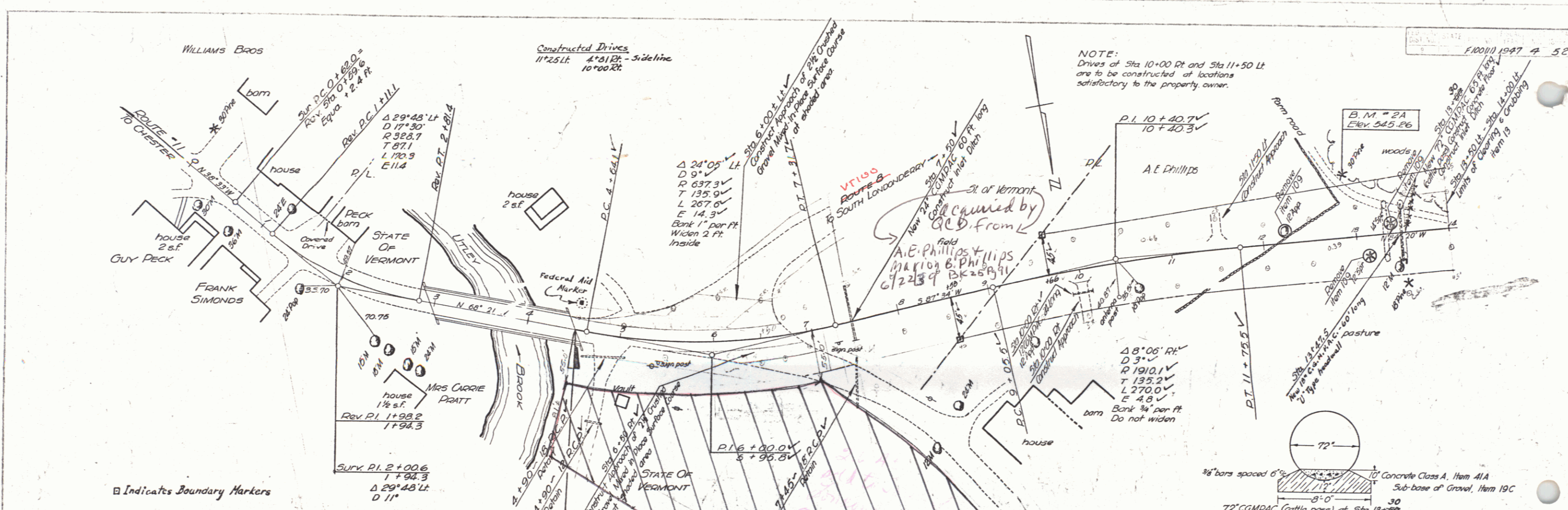
CONSTRUCTION IS TO BE CARRIED ON IN ACCORDANCE WITH THE PLANS AND THE STANDARD ROAD AND BRIDGE SPECIFICATIONS OF 1936, AS APPROVED DECEMBER 29TH, 1936 BY THE PUBLIC ROADS ADMINISTRATION, INCLUDING ALL SUBSEQUENT APPROVED REVISIONS AND SUCH REVISED SPECIFICATIONS AND SPECIAL PROVISIONS AS ARE SUBMITTED WITH THE PLANS.

APPROVED: 23 June 47
COMMISSIONER OF HIGHWAYS

APPROVED: June 29 1947
HIGHWAY ENGINEER

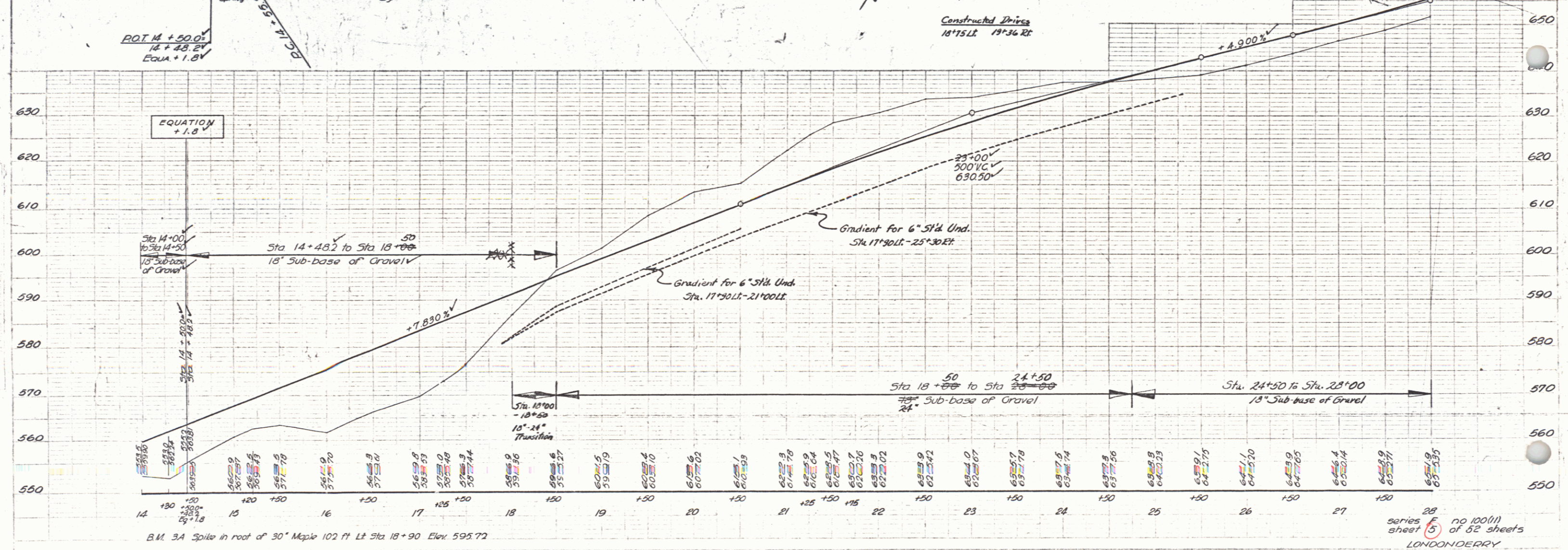
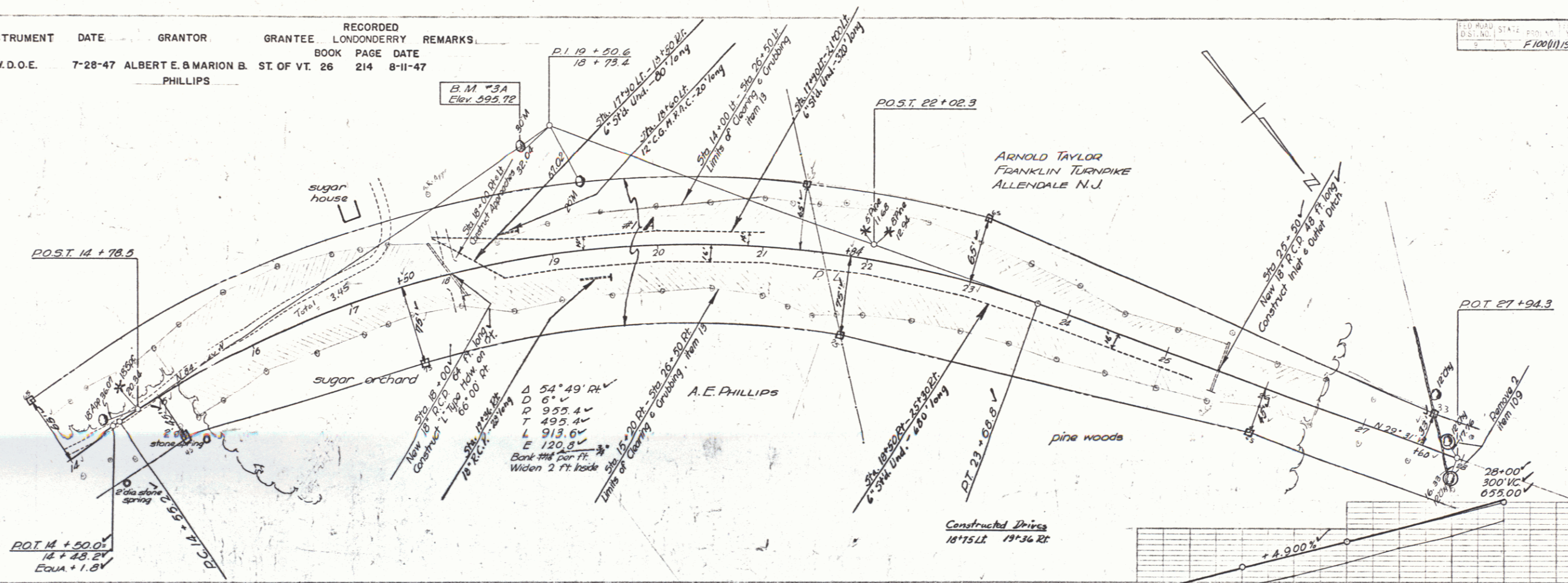
APPROVED: June 29 1947
DISTRICT HIGHWAY COMMISSIONER

SERIES F. NO. 100 (1) FILED
SHEET 1 OF 52



PARCEL # / A	INSTRUMENT	DATE	GRANTOR	GRANTEE	RECORDED LONDON DERRY	REMARKS
W.D.O.E.	7-28-47	ALBERT E. & MARION B. PHILLIPS	ST. OF VT. 26	BOOK 214	PAGE 8-II-47	

DIST. NO. 1947 5 52
 SHEETS



Surveying
 Reports

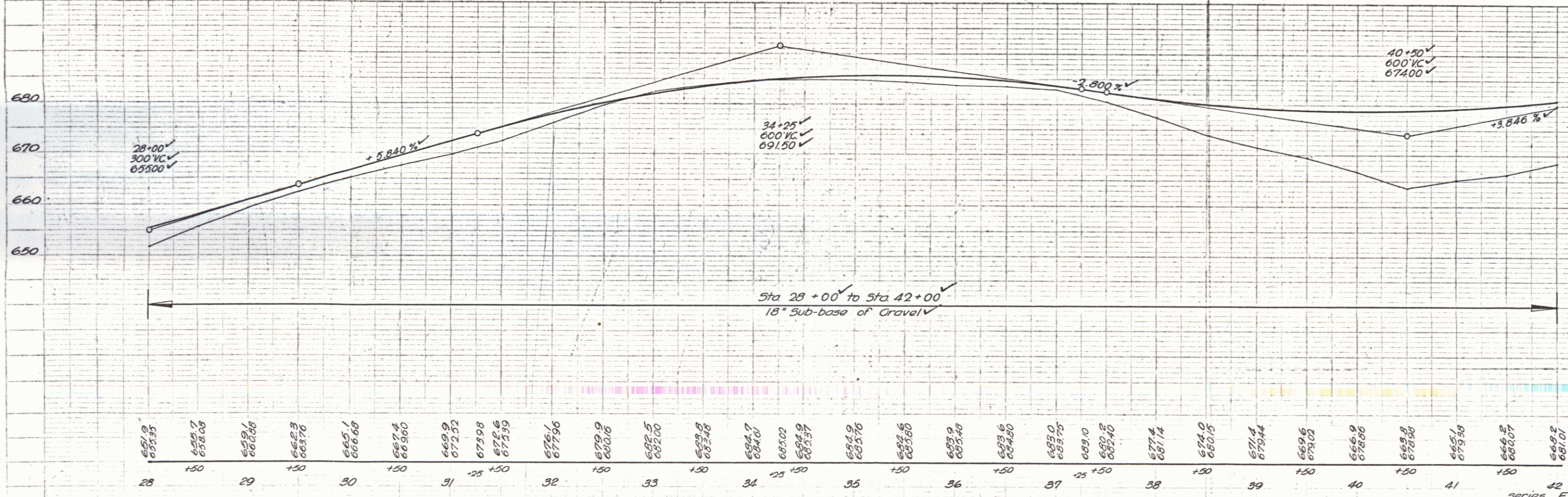
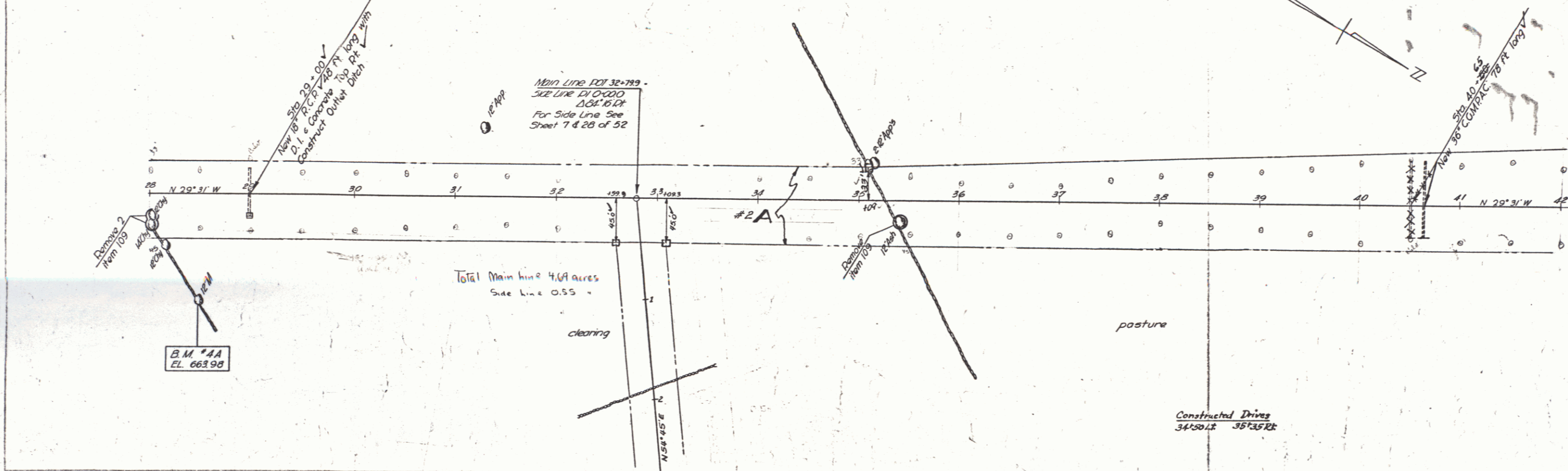
Surveying
 Reports

B.M. 3A Spike in root of 30' Maple 102 ft Lt Sta. 18+90 Elev. 595.72

series 28
 sheet 5 of 52 sheets
 LONDON DERRY

PARCEL #2 A-B INSTRUMENT W.D.O.E. DATE 7-28-47 GRANTOR ARNOLD TAYLOR GRANTEE LONDONDERRY ST. OF VT. 26 RECORDED BOOK PAGE DATE 215 8-11-47 REMARKS #2 B on Sh. 7

FED. ROAD DIST. NO. STATE VT. PROJECT NO. 1000(11)1947 6 52



PLAN
 DATE
 DRAWN BY
 CHECKED BY

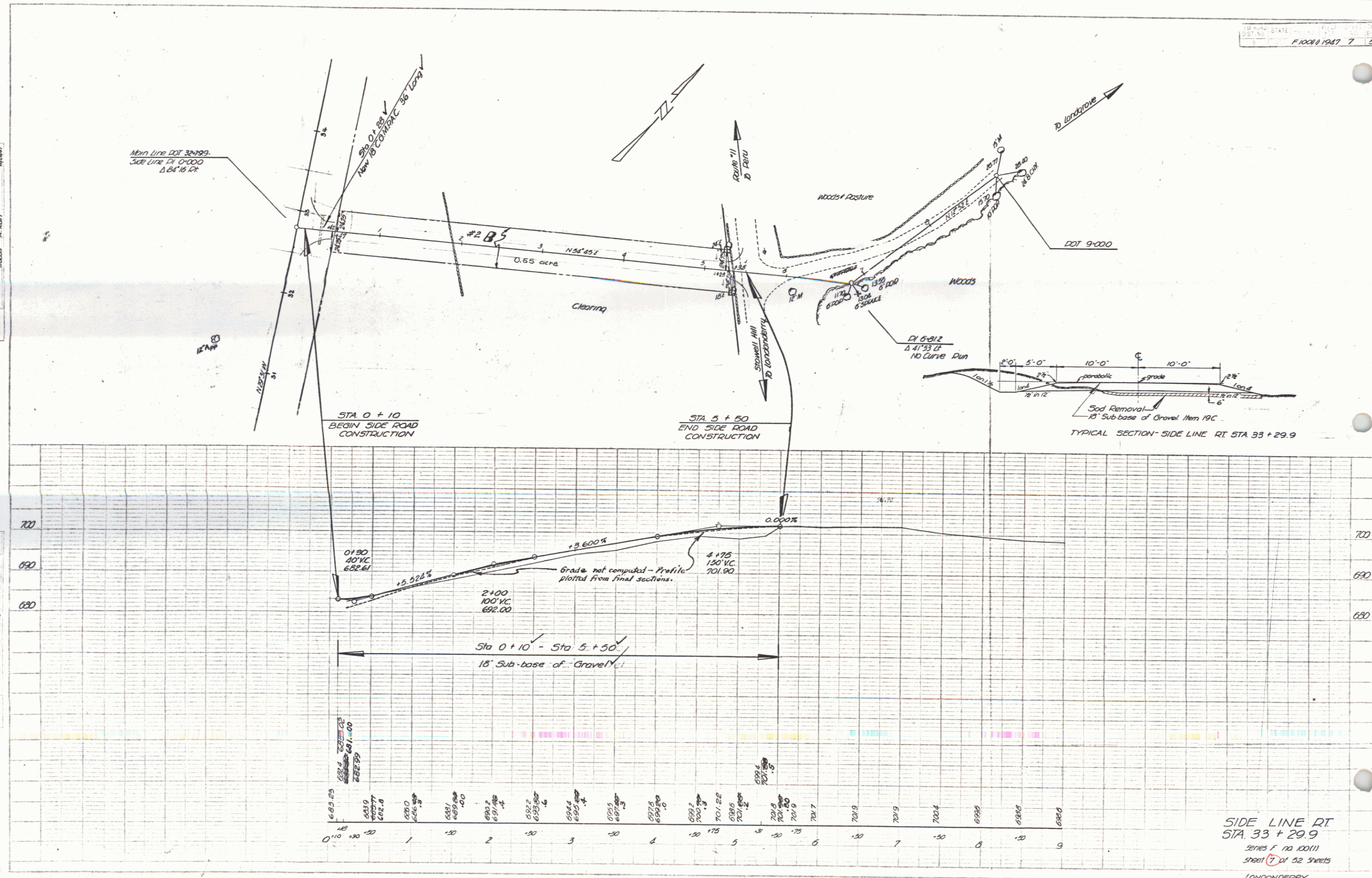
PROFILING
 DATE
 DRAWN BY
 CHECKED BY

B.M. *AA Spike in root of 12" Maple 99 Ft. Rt. Sta. 28+50 Elev. 663.98
 B.M. *IO Spike in root of 12" Maple 290 Ft. Rt. Sta. 41+15 Elev. 689.11 (shown on sheet 7)

Series F no 100(11) sheet 6 of 52 sheets LONDONDERRY

PLAN
 PROJECT: 52100
 SHEET NO.: 52
 DATE: 10/1/77
 DRAWN BY: J. H. HARRIS
 CHECKED BY: P. H. HARRIS

PROFILE
 PROJECT: 52100
 SHEET NO.: 52
 DATE: 10/1/77
 DRAWN BY: J. H. HARRIS
 CHECKED BY: P. H. HARRIS

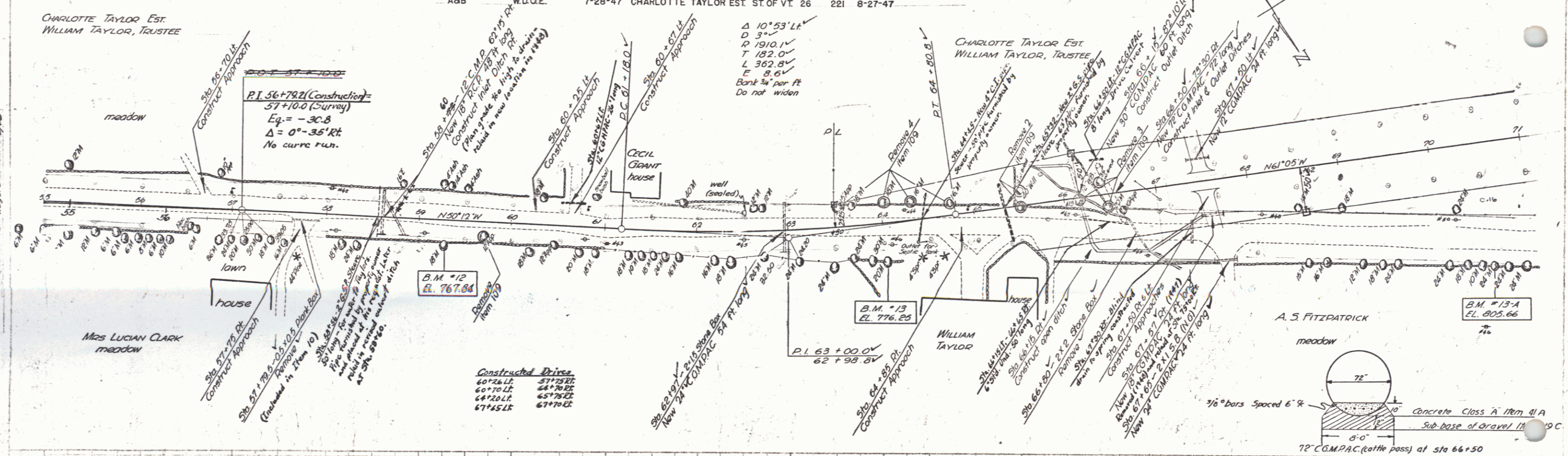


SIDE LINE RT
 STA. 33 + 29.9
 SERIES F NO 100111
 SHEET 7 OF 52 SHEETS
 LONDONDERRY

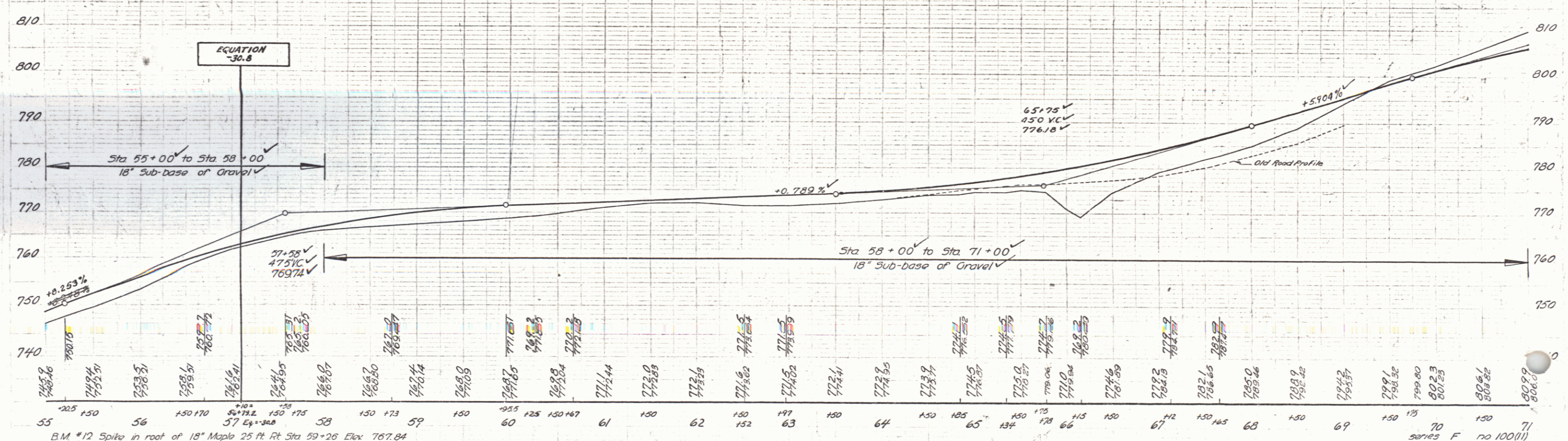
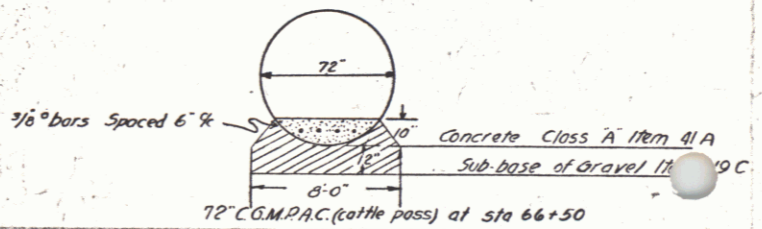
PLATE TO PLAN - 1/4" = 1' & 1/4" = 100'
 SCALE: 1/4" = 100'

PARCEL INSTRUMENT DATE GRANTOR GRANTEE RECORDED LONDONDERRY REMARKS
 BOOK PAGE DATE
 ABB W.D.Q.E. 7-28-47 CHARLOTTE TAYLOR EST ST.OF VT. 26 221 8-27-47

F100(1) 1947 9 52



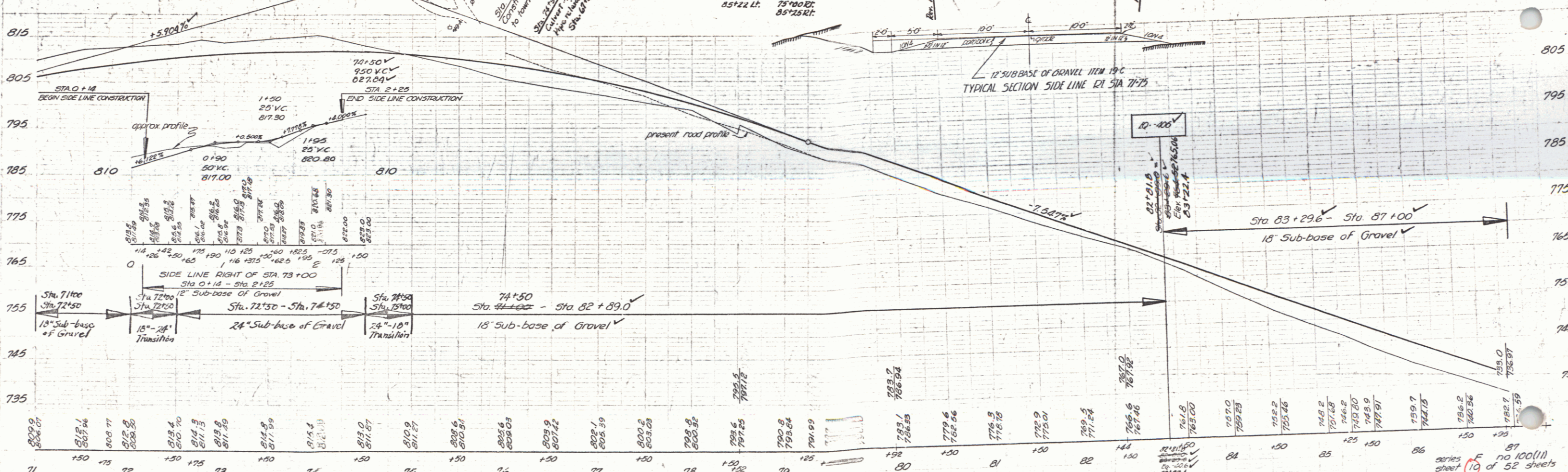
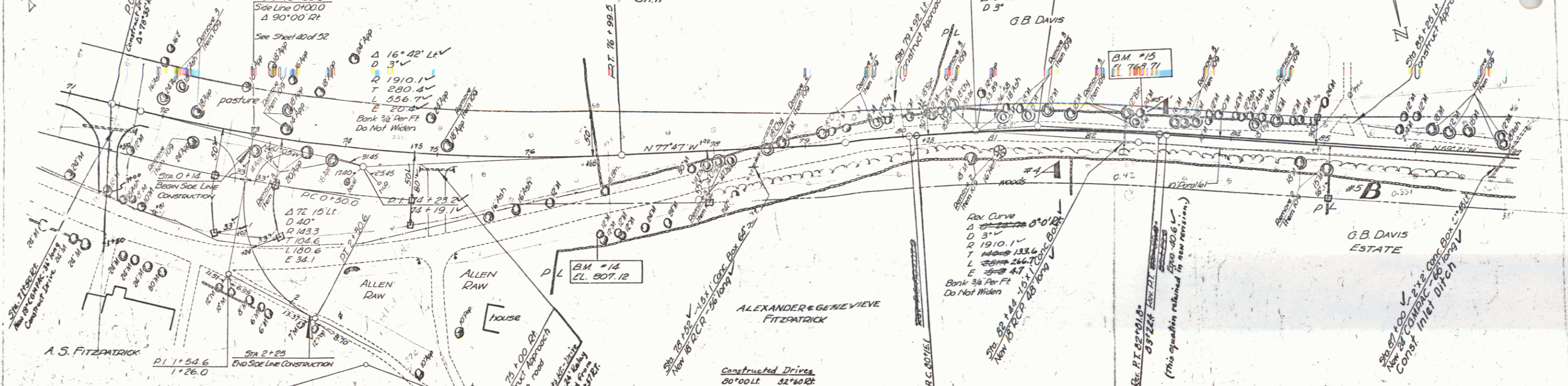
Constructed Drive
 60+26 Lf. 51+28 El.
 60+70 Lf. 54+28 El.
 64+50 Lf. 65+78 El.
 67+45 Lf. 67+02 El.



B.M. #12 Spike in root of 18" Maple 25 ft ft Sta 59+26 Elev 767.84
 B.M. #13 Spike in root of 20" Maple 25 ft ft Sta 64+07 Elev 776.25
 B.M. #13A Spike in root of 24" Maple 34 ft ft Sta 70+66 Elev 802.66

series F no 100(11)
 sheet 9 of 52 sheets
 LONDONDERRY

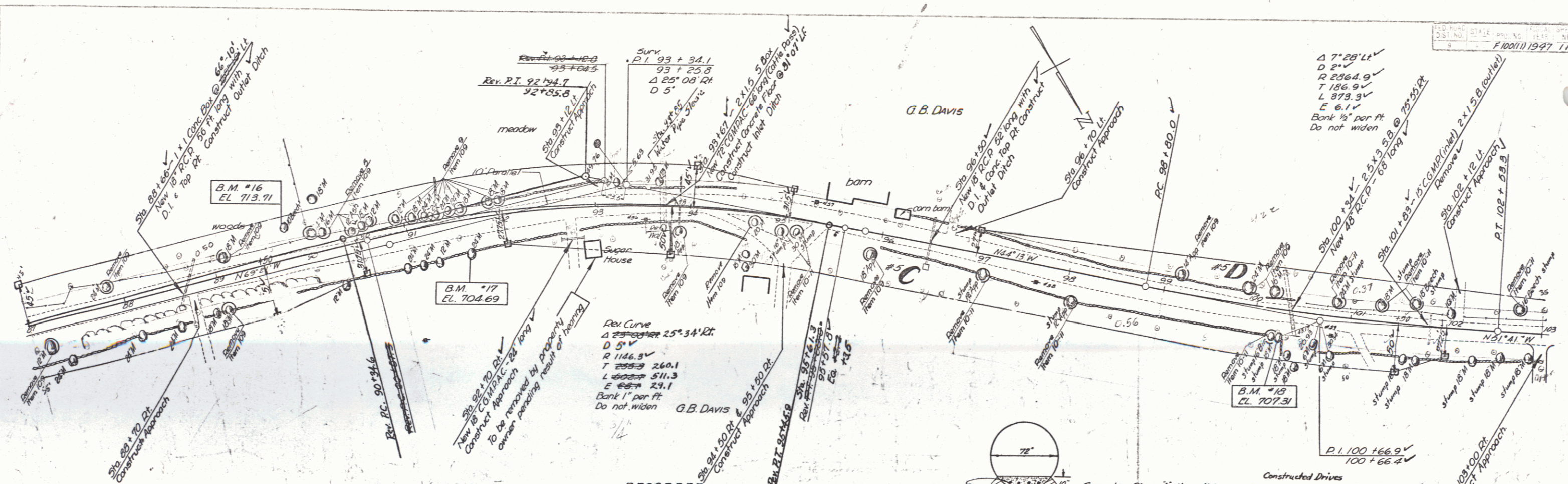
PARCEL	INSTRUMENT	DATE	GRANTOR	GRANTOR LONDONDERRY	REMARKS
#4A	W.D.O.E.	7-29-47	ALEXANDER & GENEVIEVE ST. OF VT. 26	216	8-13-47
#5A,B,C,D	A.D.	4-7-48	G.B. DAVIS ESTATE	260	4-13-48
			FITZPATRICK		#5C CHARLOTTE TAYLOR EST.
					#5D DON WILLIAM TAYLOR, TRUSTEE



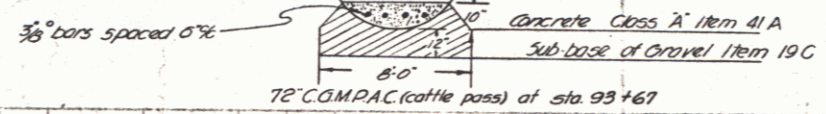
B.M. #11 - S. 1 P. 12 Maple 80, Rt Sta 76 + 75 - Elev. 807.12
 B.M. #12 - S. 1 R. 24 Maple 18 Lt Sta 82 + 55 - Elev. 768.71

FROM 1967 10 52

series sheet 10 of 52 sheets LONDONDERRY

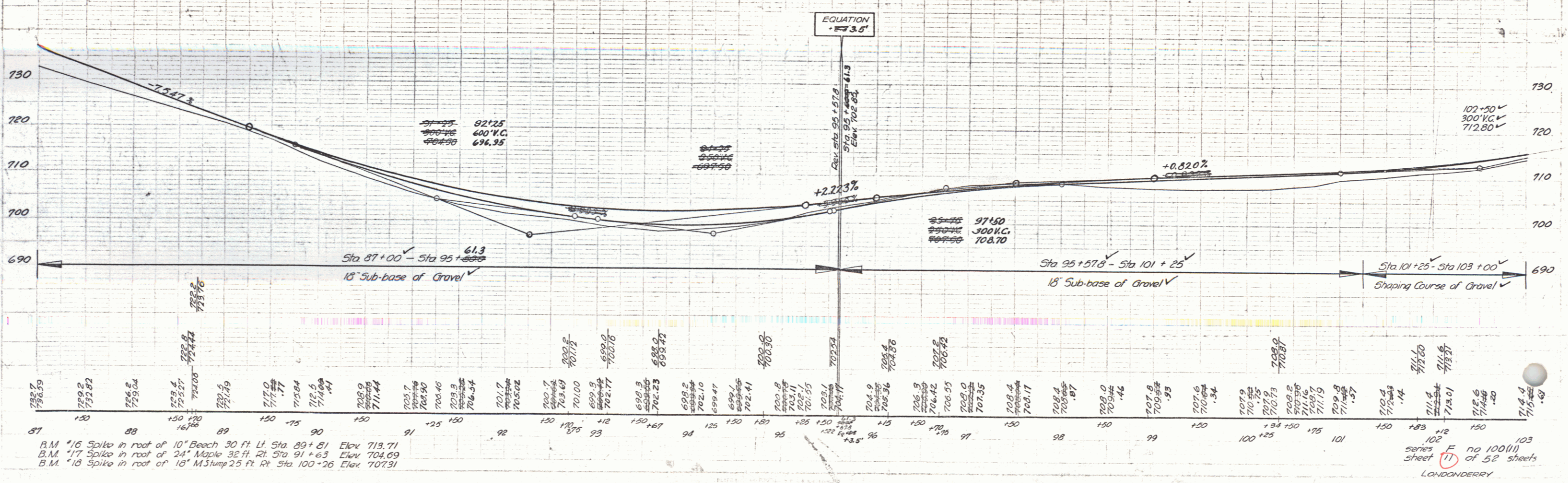


PARCEL	INSTRUMENT	DATE	GRANTOR	GRANTEE	RECORDED	REMARKS
#5 A, B, C, & D	ADMIN. DEED	4-7-48	G.B. DAVIS ESTATE	ST. OF VT.	BOOK 26 PAGE 260 DATE 4-13-48	SEE SHEET 10 FOR A & B



Constructed Drives

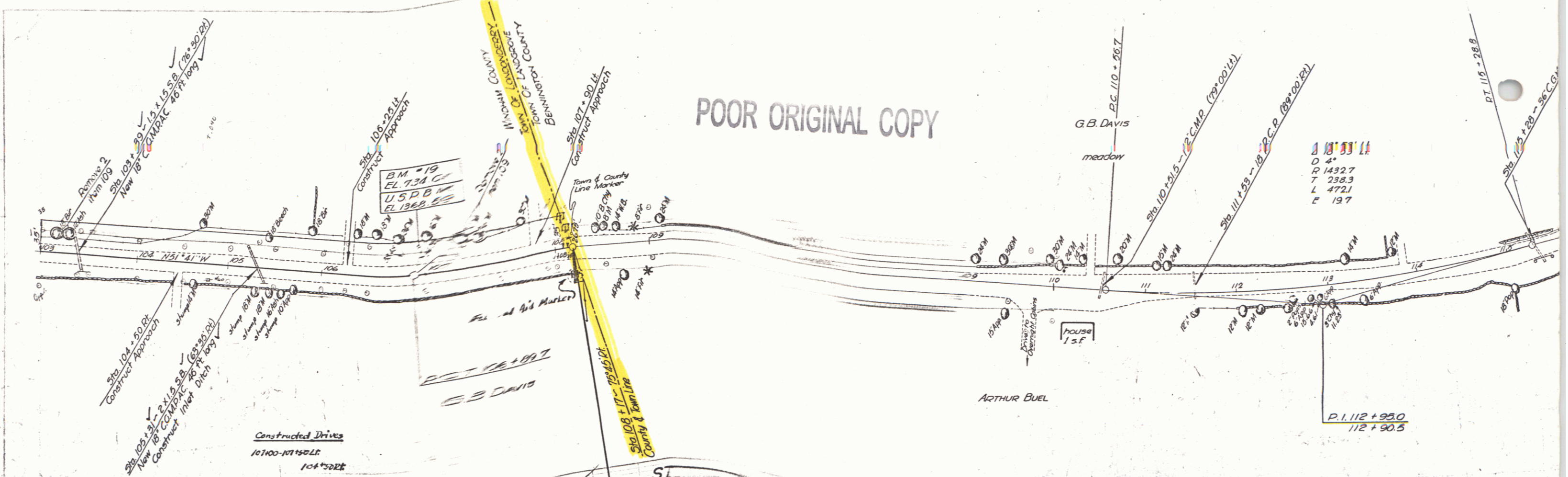
92+75.1	88+75.2
94+52.4	92+49.8
102+15.1	35+00.8
102+25.2	102+25.2



B.M. #16 Spike in root of 10" Beech 30 ft Lt. Sta. 89+81 Elev. 713.71
 B.M. #17 Spike in root of 24" Maple 32 ft Rt. Sta. 91+63 Elev. 704.69
 B.M. #18 Spike in root of 18" M3ump 25 ft Rt. Sta. 100+26 Elev. 707.31

Series E no 100(1) of 52 sheets
 LONDONDERRY

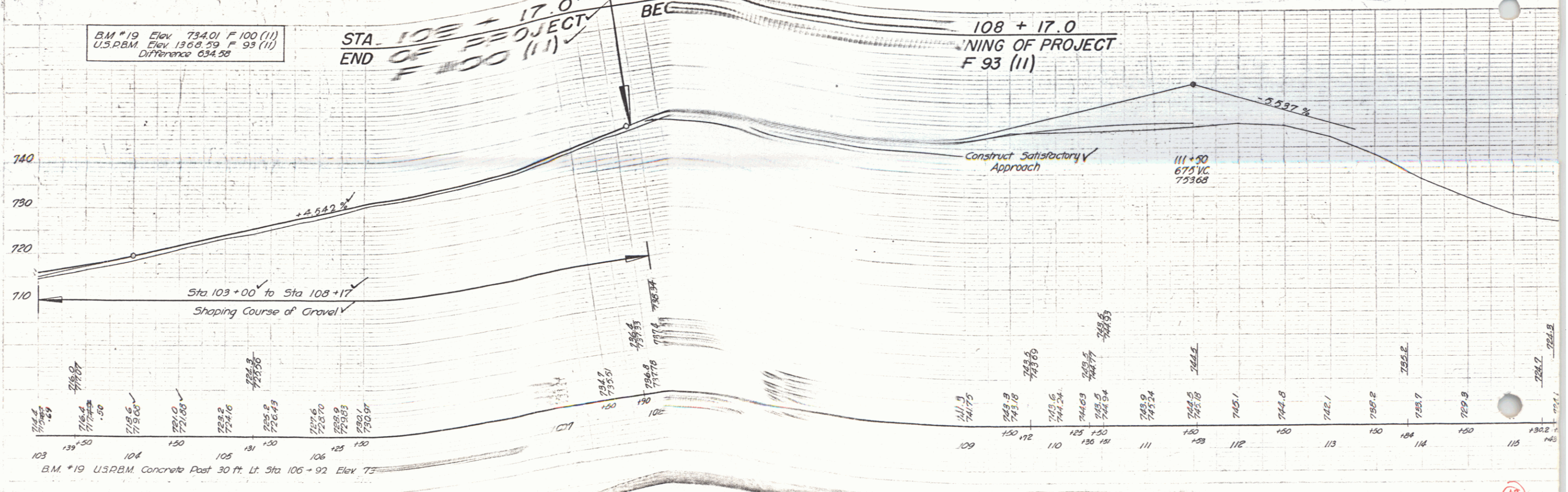
POOR ORIGINAL COPY



B.M. *19 Elev 734.01 F 100 (11)
 U.S.P.B.M. Elev 1368.59 F 93 (11)
 Difference 634.58

STA 102 + 17.0
 END OF PROJECT
 F 100 (11)

108 + 17.0
 END OF PROJECT
 F 93 (11)



B.M. *19 U.S.P.B.M. Concrete Post 30 ft. Lt. Sta 105 + 92 Elev 75

12

10