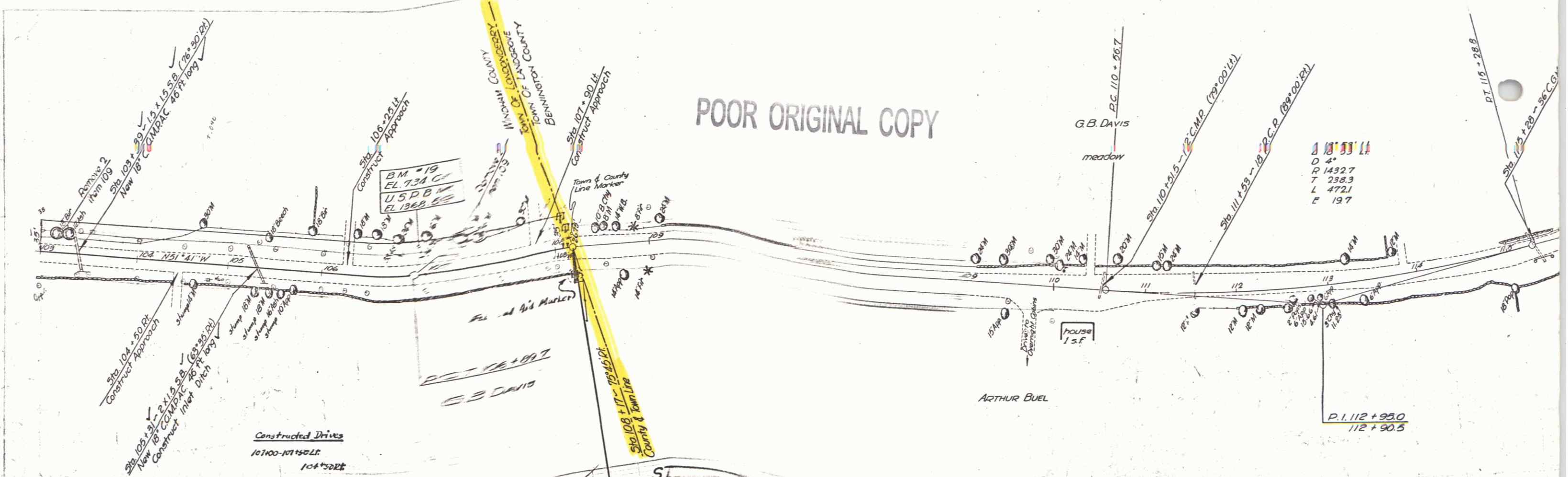


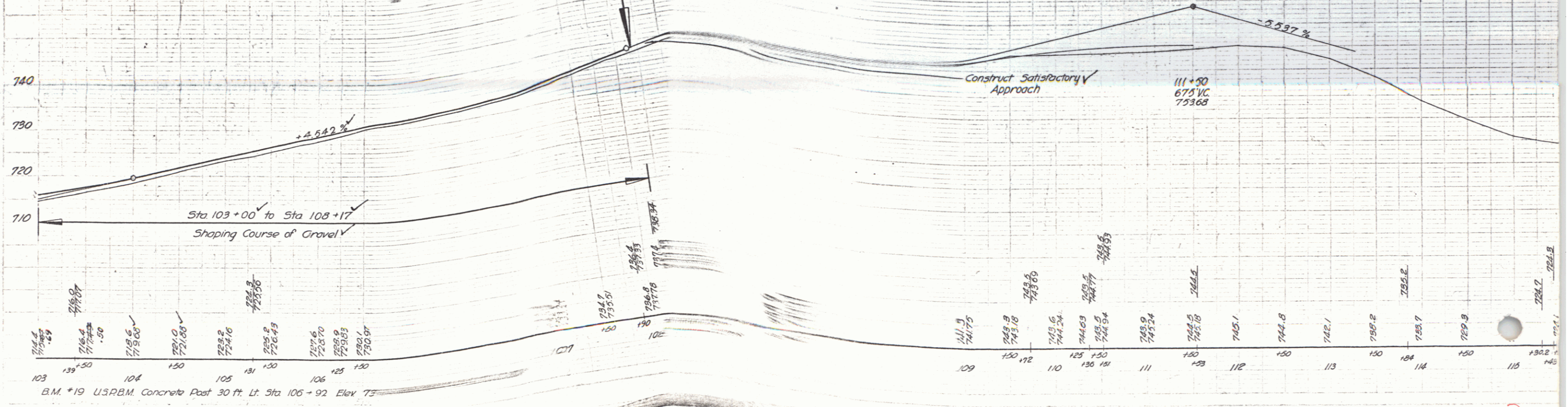
POOR ORIGINAL COPY



B.M. *19 Elev 734.01 F 100 (11)
 U.S.P.B.M. Elev 1368.59 F 93 (11)
 Difference 634.58

STA 102 + 17.0
 END OF PROJECT
 F 100 (11)

108 + 17.0
 END OF PROJECT
 F 93 (11)



B.M. *19 U.S.P.B.M. Concrete Post 30 ft. Lt. Sta. 105 + 92 Elev 75