

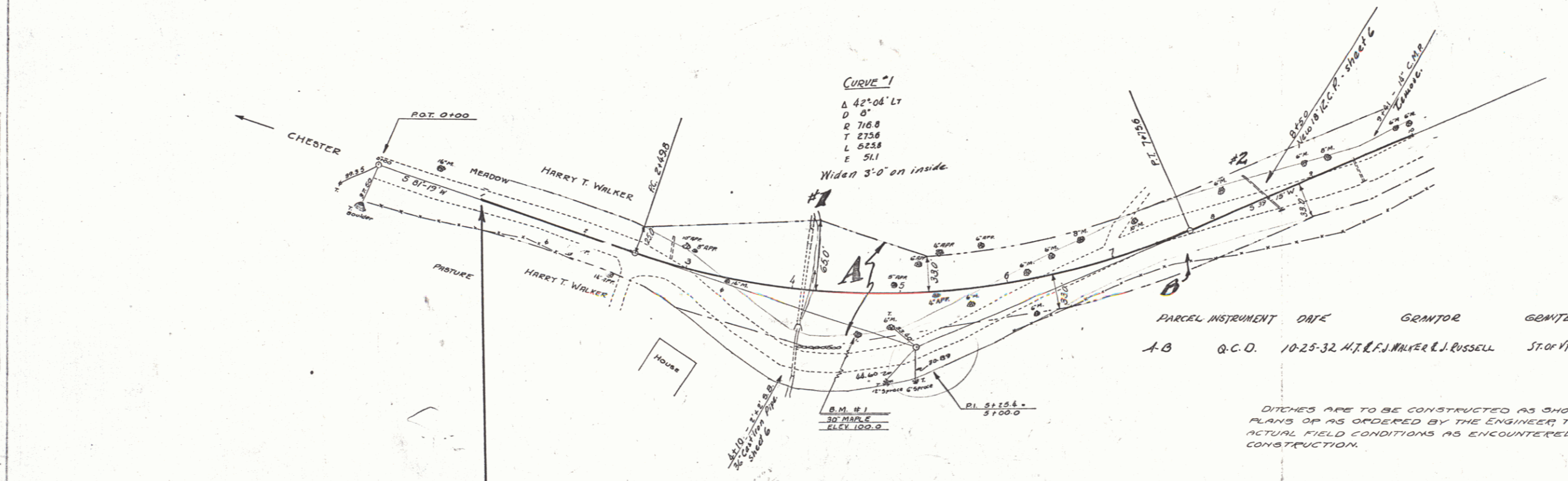
WOOD GUIDE POSTS		
CHAMBER STA	LEFT	RIGHT
8+50	-	1

CADLE GUARD RAIL				
STA TO STA	LINE	LENGTH	CONTRACT	PER LENGTH
2+80-5+80	LT	300'	40'	3.00
3+80-4+88	RT	108'	40'	1.68
7+80-12+44	LT	464'	40'	5.04

NEW CAST IRON PIPE CULVERTS				
STA	DIAM.	LENGTH	CONCRETE	STEEL
4+10	36"	95'	2.3%	25'

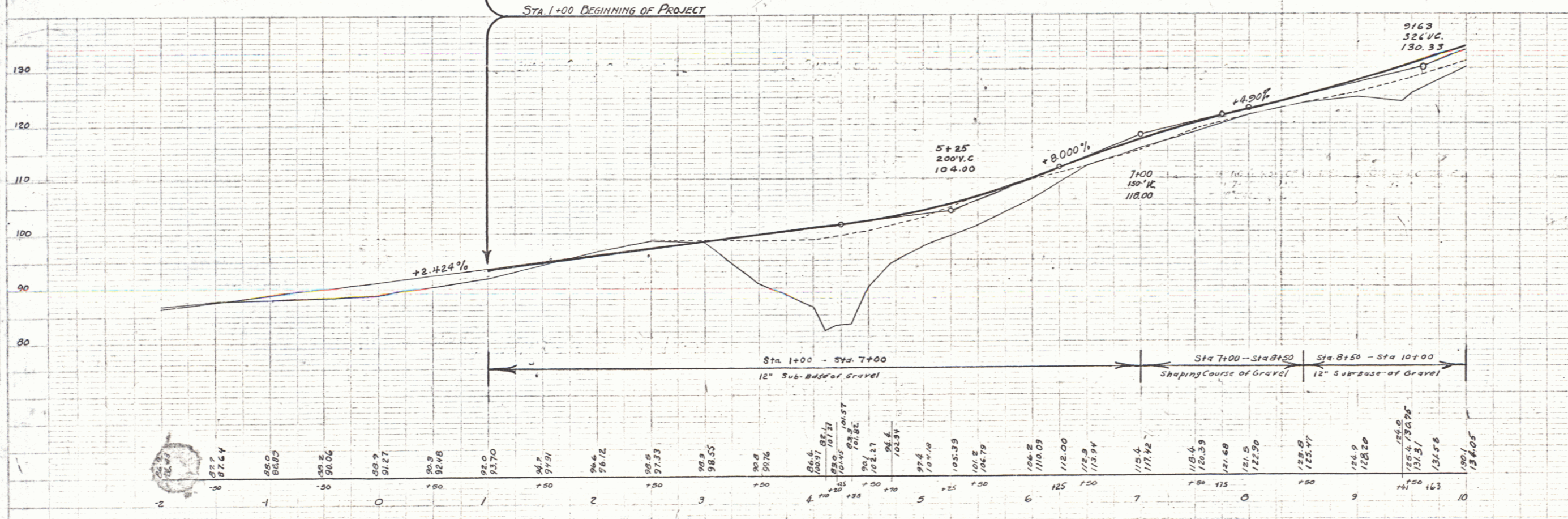
REINFORCED CONCRETE PIPE CULVERT				
STATION	SIZE	LENGTH	C.E.M.	
8+60	18"	52'	1.8%	

DIST.	STATE	FED. AID	TOTAL	SHEET	TOTAL
NO.	NO.	NO.	NO.	NO.	NO.
1	VT	E99-C	1992	4	13



PARCEL	INSTRUMENT	DATE	GRANTOR	GRANTEE	RECORDED	REMARKS
A-B	Q.C.D.	10-25-32	H.T. WALKER & J. RUSSELL	ST. OF VT.	BOOK PAGE DATE	CULSPR-2-3 K110 81-370 12.4.00

DITCHES ARE TO BE CONSTRUCTED AS SHOWN ON THE PLANS OR AS ORDERED BY THE ENGINEER, TO MEET THE ACTUAL FIELD CONDITIONS AS ENCOUNTERED DURING CONSTRUCTION.



B.M. #1 - 30' MAPLE - 36" RT. - STA. 4+63 - ELEV. 100.00

3025 F 99-B
Sheet 4 of 13