

POOR ORIGINAL COPY

INDEX OF SHEETS

SHEET NO	TITLE PAGE
1	TYPICAL CROSS SECTION OF IMPROVEMENT (BITUMINOUS CONCRETE PAVEMENT)
2	B-1 (BANKING AND WIDENING)
3	QUANTITY
4	ITEM AND DRAINAGE
5	EARTHWORK
6-9	LAYOUTS
10-17	BRIDGE LAYOUTS
18-22	STANDARD SHEET A-6 (DRILLING & BLASTING SOLID ROCK SUBGRADE)
23	STANDARD SHEET B-5 (TYPICAL SLOPE GRADING)
24	STANDARD SHEET B-12 (SIDE ROAD INTERSECTION)
25	STANDARD SHEET C-1 (CURBS & BIT CONCRETE SIDEWALK)
26	STANDARD SHEET D-1 (PRECAST R.C.P. DI WITH COVER)
27	STANDARD SHEET D-2 (HEADWALL & UNDERDRAIN)
28	STANDARD SHEET D-3 (REINFORCED CONC. DROP INLET TOP WITH GRANITE CURB)
29	STANDARD SHEET D-4 (UNDERDRAIN FLUSHING BASIN)
30	STANDARD SHEET D-5 (REINFORCED CONC. DROP INLET TOP WITH GRANITE CURB)
30A	STANDARD SHEET D-5 (REINFORCED CONC. DROP INLET TOP WITH GRANITE CURB)
30B	STANDARD SHEET D-11 (DETAILS OF GRATES & COVERS FOR DROP INLETS)
31	STANDARD SHEET E-1 (BARRICADES, SIGNS & LIGHTS)
32	STANDARD SHEET G-3 (THREE CABLE GUARD RAIL WITH STEEL POSTS)
32-A	STANDARD SHEET G-4 (STEEL GUIDE POSTS, MARKER POSTS)
32-B	STANDARD SHEET J-1 (MARKERS)
33-102	CROSS SECTIONS
103-110	CHANNEL SECTIONS

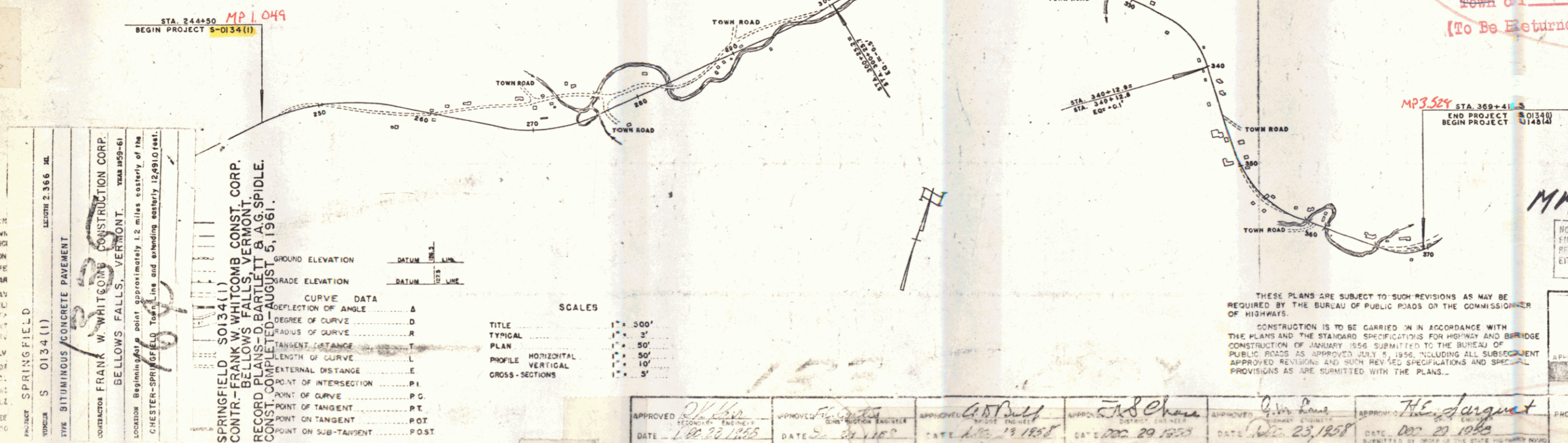
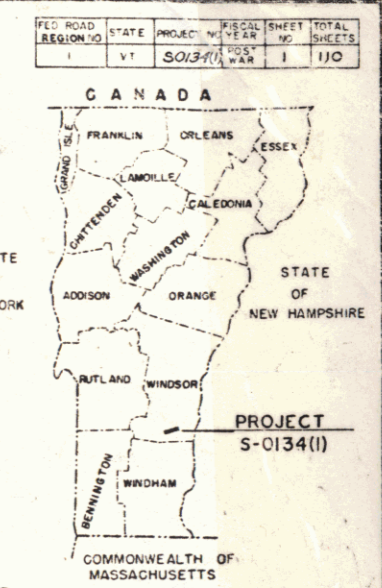
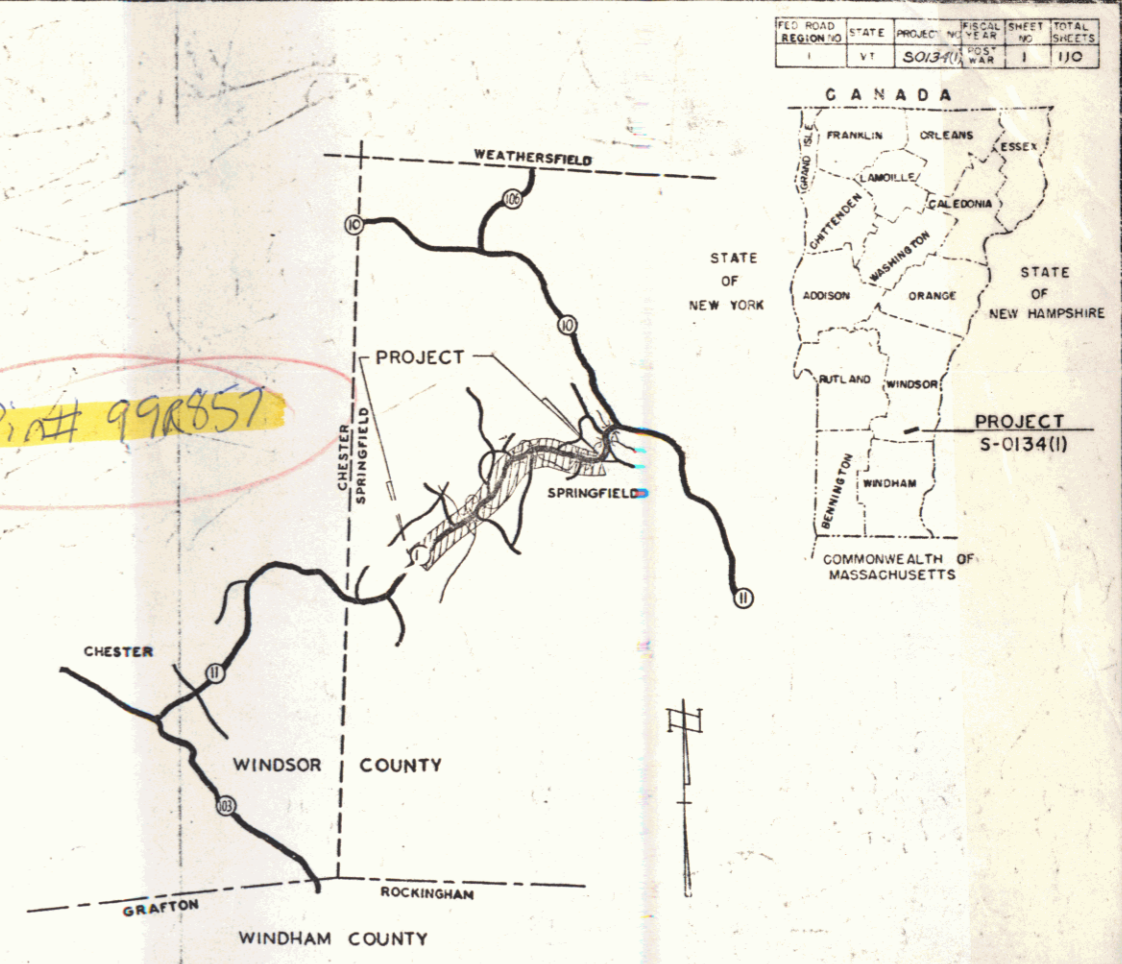
PROJECT NAME & NUMBER	TYPE	PAVEMENT AREA
SPRINGFIELD	S 0134(I) BIT. CONC.	13,788 S.Y.
RECORD PLANS MATERIALS		

SUBBASE OF GRAVEL—FAIRBANKS GRAVEL PIT—NO. SPRINGFIELD, VERMONT. & SHATTUCK GRAVEL PIT—WEATHERSFIELD, VERMONT.
 CRUSHED STONE BASE COURSE—COLD RIVER SAND & GRAVEL CO.—WALPOLE, NEW HAMPSHIRE.
 REFINED TAR, PENETRATION MACADAM & ASPHALT CEMENT—ESSO STANDARD OIL CO.—EVERETT, MASSACHUSETTS.
 BITUMINOUS CONCRETE—COLD RIVER HOT MIX PLANT—WALPOLE, N. H.
 CONCRETE CLASS "B"—CHARLESTOWN READY MIX—CHARLESTOWN, N. H.
 REINFORCING STEEL—RYERSON STEEL CO.—BOSTON, MASSACHUSETTS.
 REINFORCED CONCRETE PIPE & PRECAST R.C.P. DROP INLETS WITH COVERS—VERMONT CONCRETE PIPE CO.—WINDSOR, VERMONT.
 ASPHALT COATED CORRUGATED GALVANIZED METAL PIPE, METAL PLATE PIPE, & A.C.C.G.M.P. DROP INLET WITH GRATE—NORTHEASTERN CULVERT CO.—WESTMINSTER, VERMONT.
 GRANITE CURBING—FLETCHER GRANITE CO.—CHELMSFORD, MASS.
 THREE CABLE GUARD RAIL W/STEEL POSTS, STEEL GUIDE & MARKER POSTS—S. T. GRISWOLD CO. INC.—ESSEX JUNCTION, VERMONT.
 CONTR—FRANK W. WHITCOMB CONST. CORP. BELLOWS FALLS, VERMONT.
 RESIDENT ENGINEER—W. H. DRATH.
 INSPECTORS—J. F. KENNEDY & R. RUSSELL.
 RECORD PLANS—D. BARTLETT & A. G. SPIDLE.

STATE OF VERMONT
 DEPARTMENT OF HIGHWAYS
PROPOSED IMPROVEMENT
 FEDERAL-AID
 SECONDARY-PROJECT
TOWN OF SPRINGFIELD
 COUNTY OF WINDSOR
VERMONT ROUTE II
 CHESTER-SPRINGFIELD ROAD

BEGINNING AT A POINT APPROXIMATELY 1.2 MILES EASTERLY OF THE CHESTER-SPRINGFIELD TOWN LINE AND EXTENDING EASTERLY 12,491.0 FEET
 LENGTH OF PROJECT—12,491.0 FEET = 2.366 MILES

1958	ADT = 1500
1975	ADT = 2050
1975	DHV = 310
V = 50	
D = 70%	
T = 5%	



CONTRACTOR: FRANK W. WHITCOMB CONSTRUCTION CORP., BELLOWS FALLS, VERMONT.
 LOCATION: Beginning at a point approximately 1.2 miles easterly of the CHESTER-SPRINGFIELD Town Line and extending easterly 12,491.0 feet.

CONTRACTOR: FRANK W. WHITCOMB CONST. CORP., BELLOWS FALLS, VERMONT.
 RECORD PLANS: D. BARTLETT & A. G. SPIDLE.
 COMPLETED: AUGUST 5, 1961.

TITLE	SCALE
TYPICAL	1" = 30'
PLAN	1" = 50'
PROFILE HORIZONTAL	1" = 10'
PROFILE VERTICAL	1" = 5'
CROSS-SECTIONS	1" = 5'

APPROVED: [Signature]	APPROVED: [Signature]	APPROVED: [Signature]	APPROVED: [Signature]	APPROVED: [Signature]
DATE: 1-20-1955	DATE: 2-2-1955	DATE: 1-23-1955	DATE: 1-29-1955	DATE: 1-23-1955

DEPARTMENT OF COMMERCE
 BUREAU OF PUBLIC ROADS

APPROVED: [Signature]

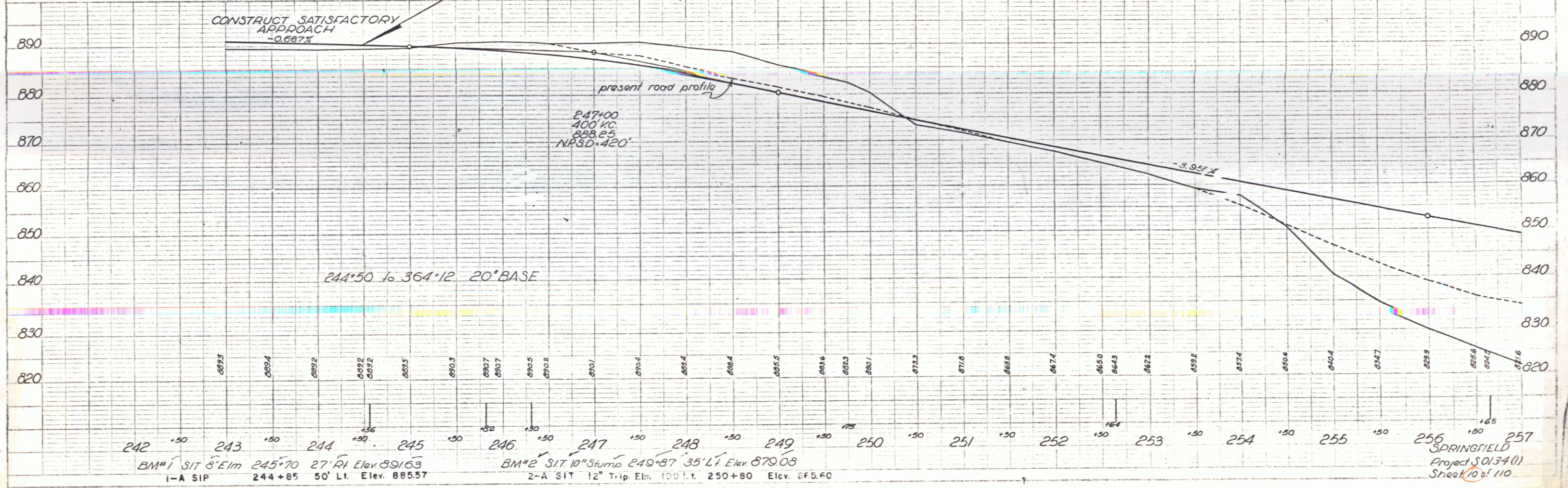
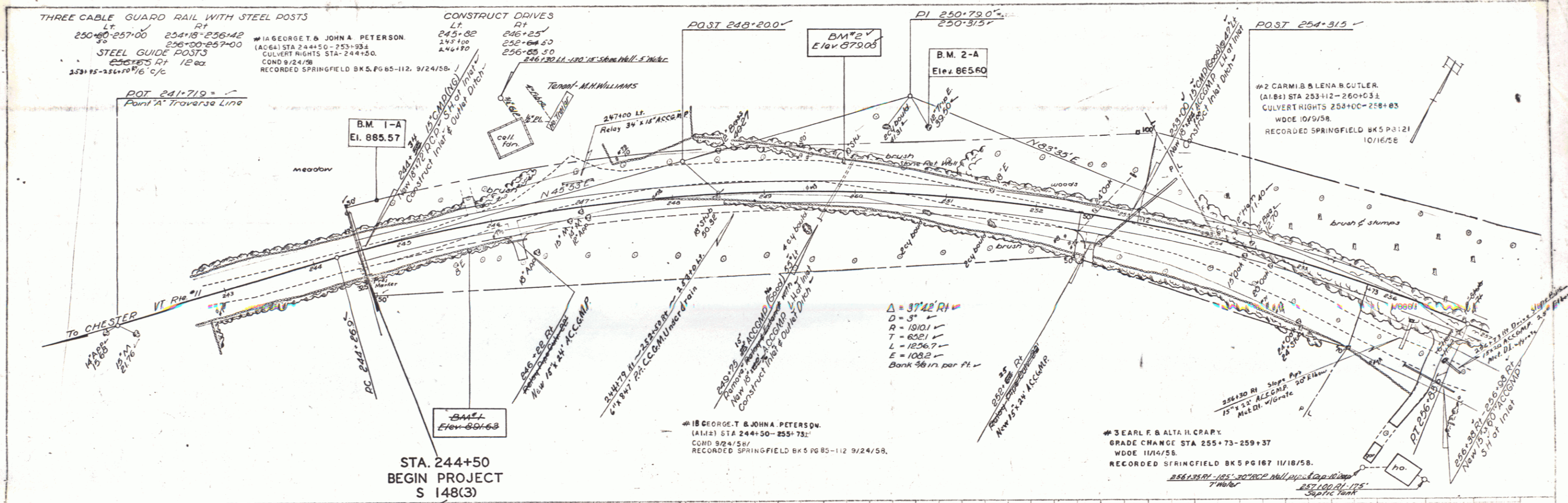
PROJECT: S NO. 0134(I)

SHEET 1 OF 110 SHEETS

114

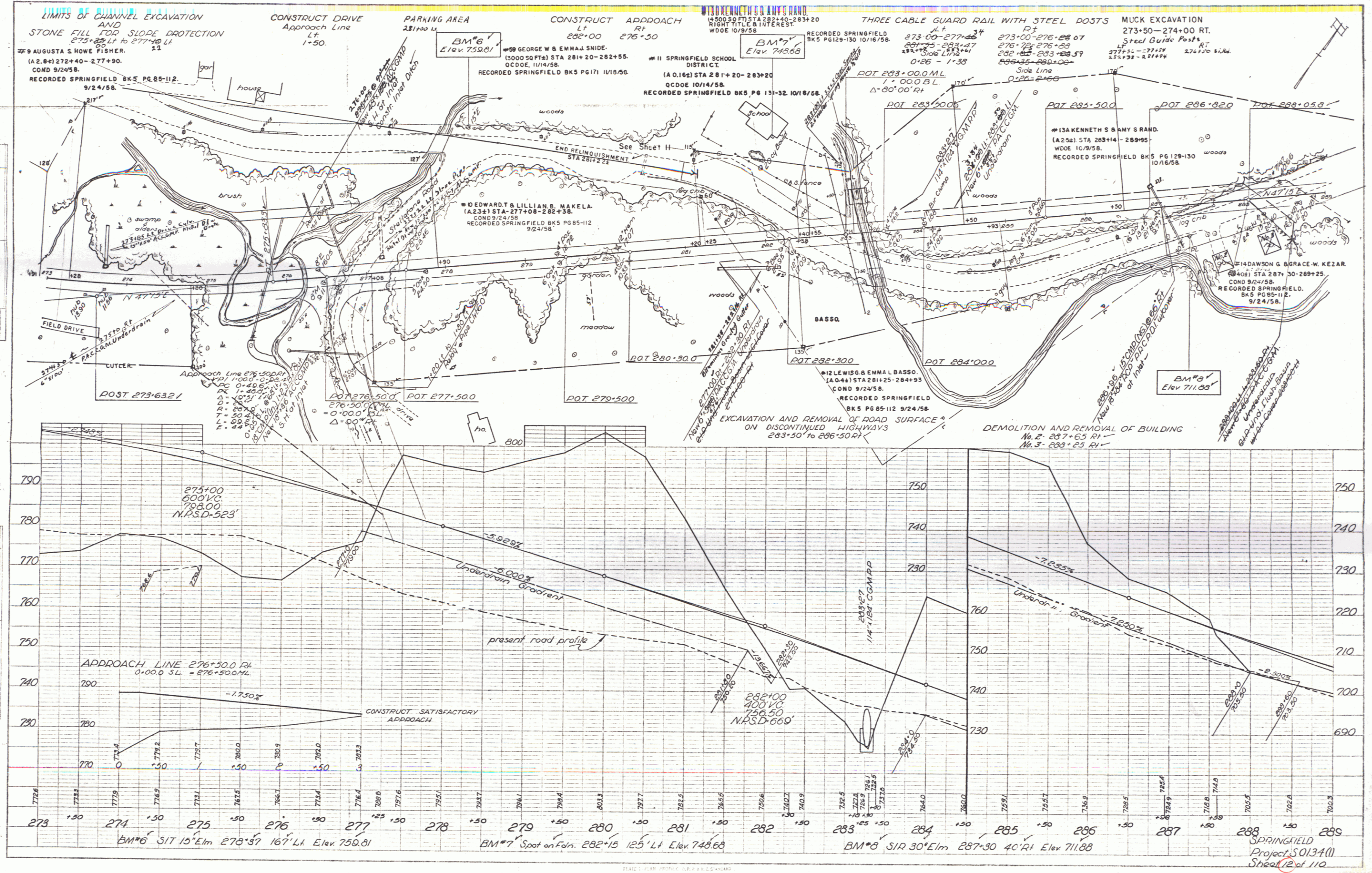
DATE: 11/15/58
 DRAWN BY: J.H.R.
 CHECKED BY: J.H.R.
 PROJECT: 50134(1)
 SHEET: 10 of 110

DATE: 11/15/58
 DRAWN BY: J.H.R.
 CHECKED BY: J.H.R.
 PROJECT: 50134(1)
 SHEET: 10 of 110

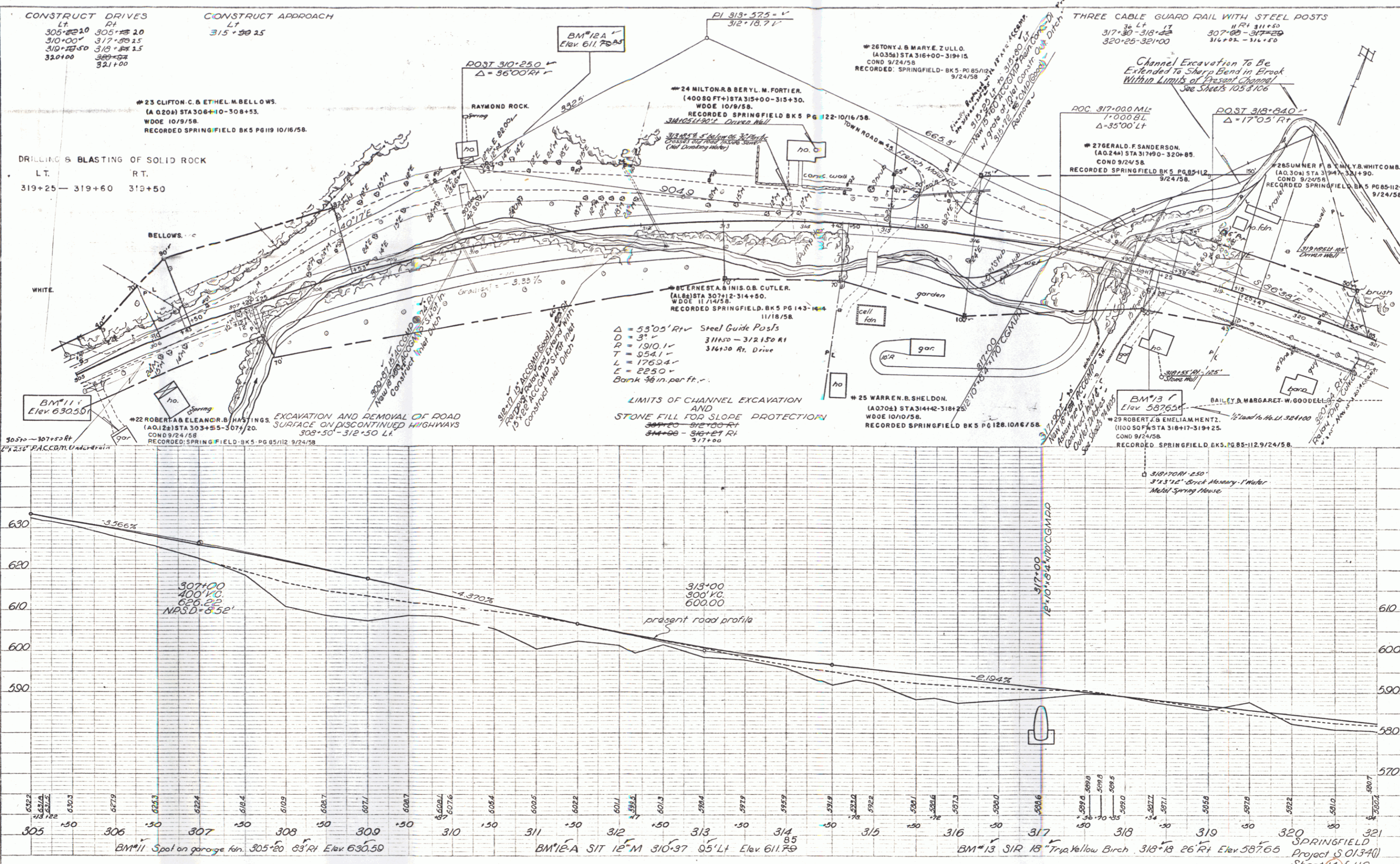


PLAN
 DATE: 10/1/58
 DRAWN BY: J. H. W. / J. H. W.
 CHECKED BY: J. H. W. / J. H. W.
 TITLE: PROJECT 50134(M) SHEET 12 OF 110

PROFILE
 DATE: 10/1/58
 DRAWN BY: J. H. W. / J. H. W.
 CHECKED BY: J. H. W. / J. H. W.
 TITLE: PROJECT 50134(M) SHEET 12 OF 110



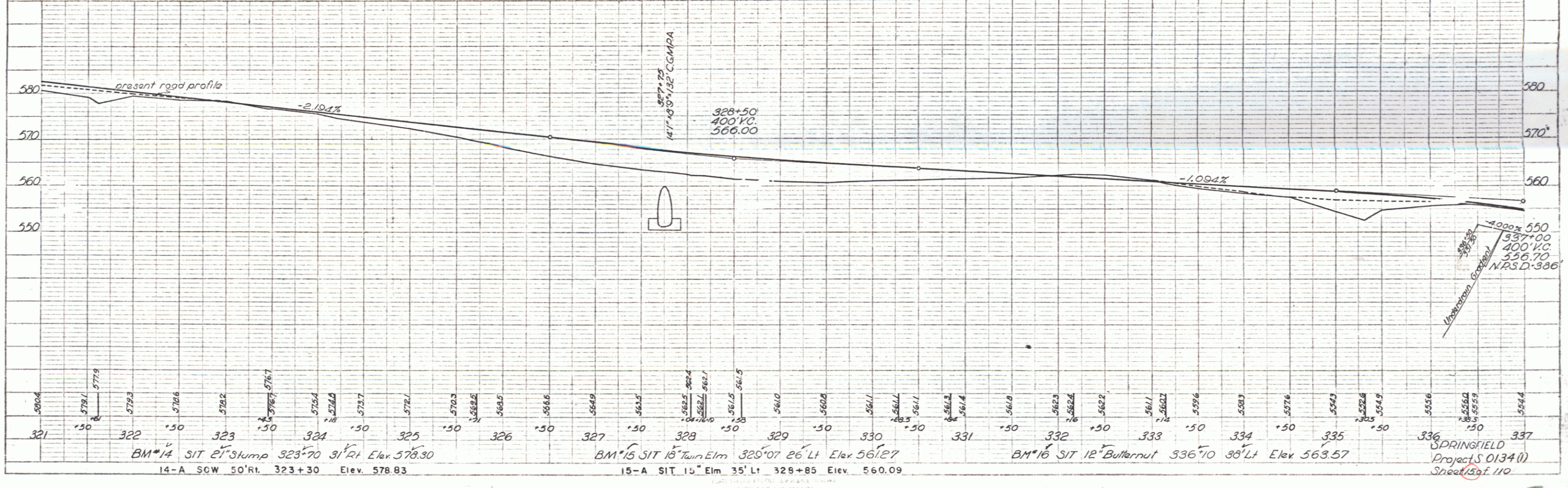
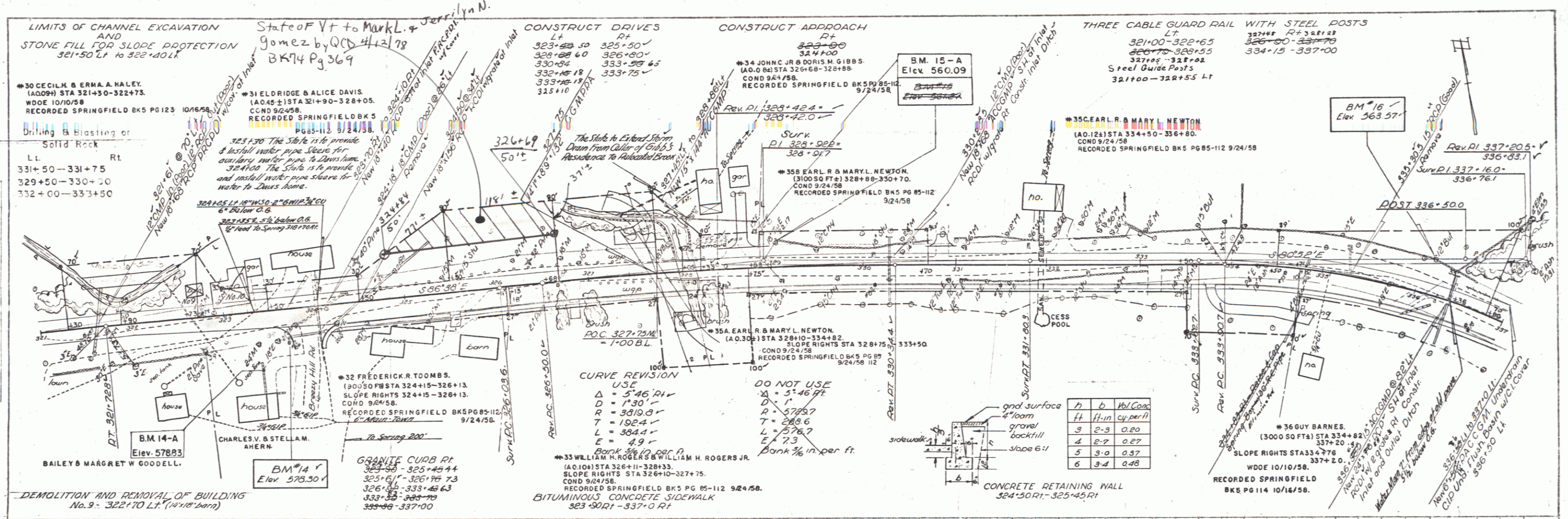
DATE: 10/1/58
 DRAWN BY: J. H. W. / J. H. W.
 CHECKED BY: J. H. W. / J. H. W.
 TITLE: PROJECT 50134(M) SHEET 12 OF 110



PLAN
 DATE: 9/27/58
 DRAWN BY: H.P.D.
 CHECKED BY: J.M.C.
 TITLE: ROAD CONSTRUCTION
 SCALE: AS SHOWN

PROFILE
 DATE: 9/27/58
 DRAWN BY: H.P.D.
 CHECKED BY: J.M.C.
 TITLE: ROAD CONSTRUCTION
 SCALE: AS SHOWN

PLATE 1 - PLAN, PROFILE AND ELEVATION
 ROAD CONSTRUCTION
 PROJECT S 01340
 SHEET 110



PLAN

DATE: 9/57

BY: [Signature]

SCALE: AS SHOWN

NOTE: SEE SPECIFICATIONS FOR MATERIALS AND METHODS.

PROFILE

DATE: 9/57

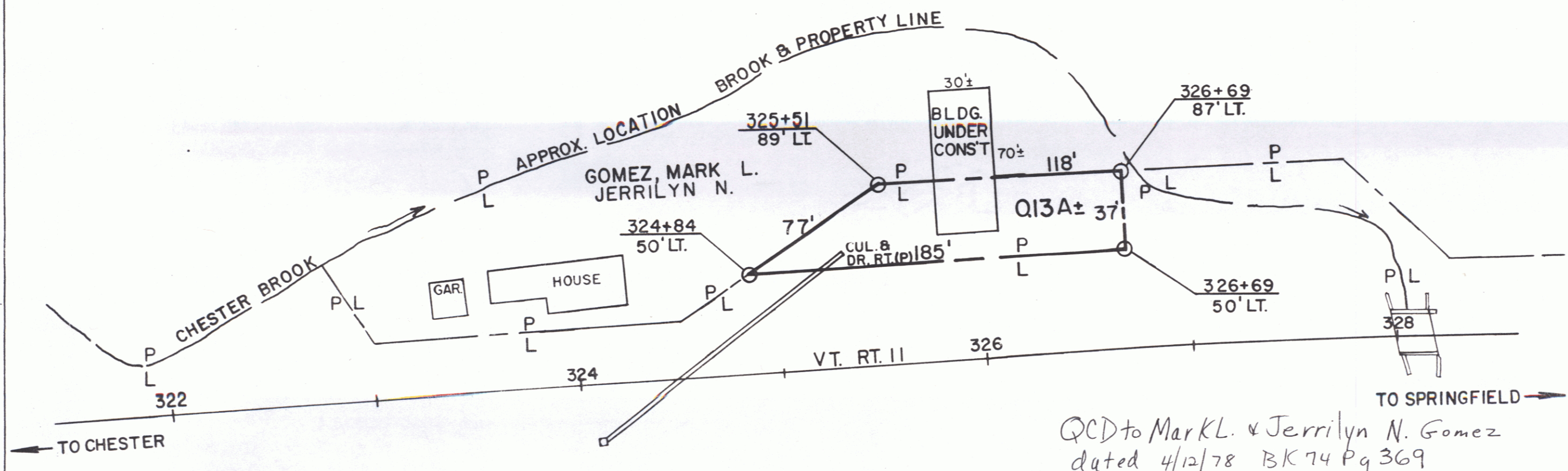
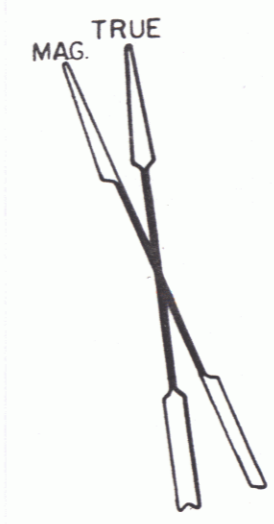
BY: [Signature]

SCALE: AS SHOWN

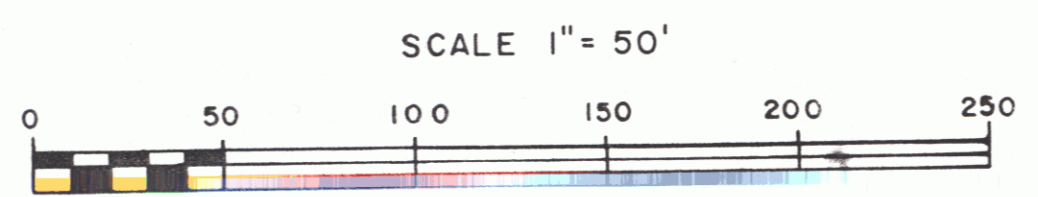
NOTE: SEE SPECIFICATIONS FOR MATERIALS AND METHODS.

ACQUIRED AS PART OF PARCEL 31 BY CONDEMNATION
 FROM ELDRIDGE & ALICE DAVIS DATED 9-24-1958
 & RECORDED IN BOOK 5, PAGES 85-112

EXCEPT AND RESERVE THE CULVERT &
 DRAINAGE RIGHT AT STATION 325+30 LEFT.

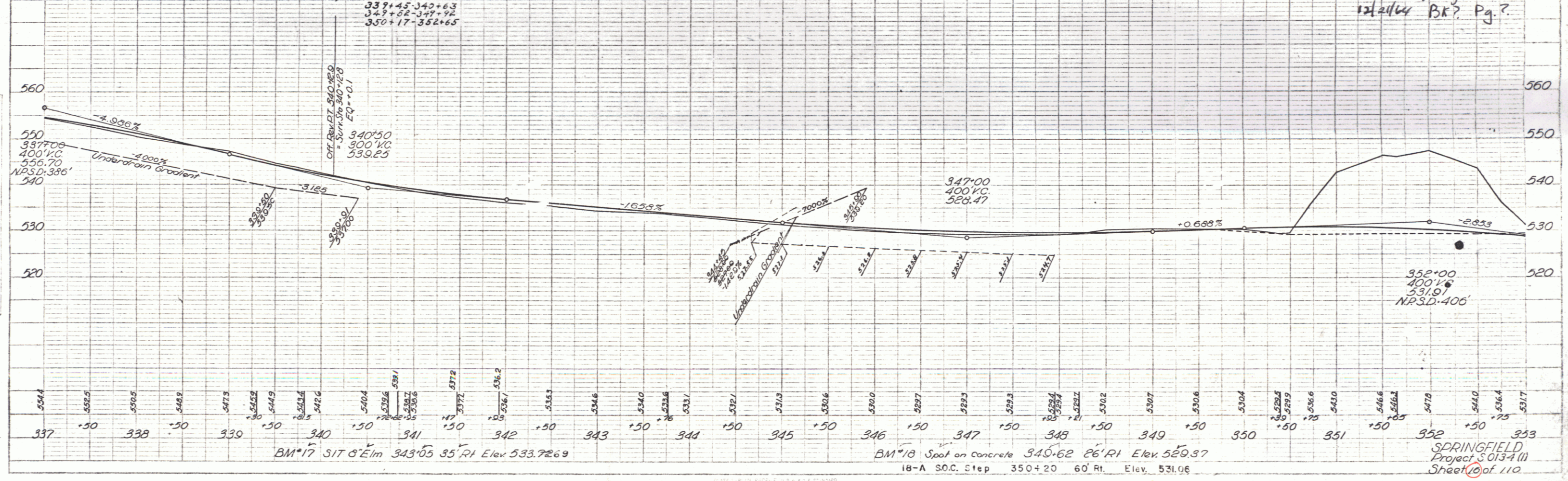
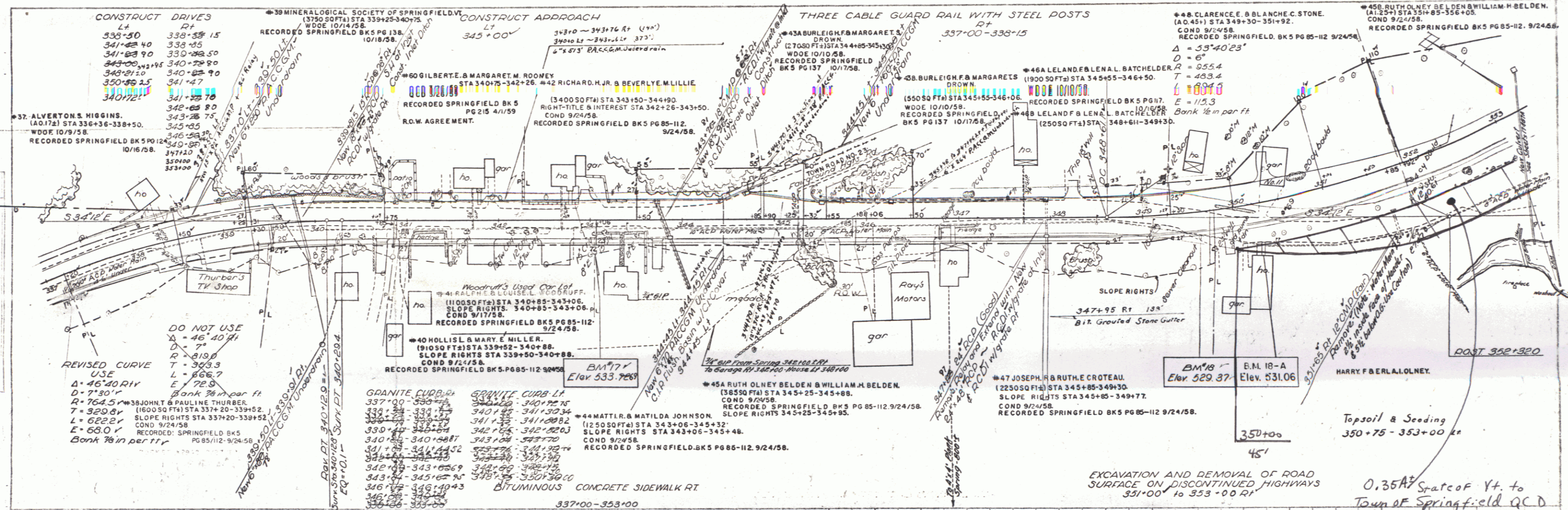


*QCD to Mark L. & Jerrilyn N. Gomez
 dated 4/12/78 BK 74 Pg 369*



STATE OF VERMONT DEPT. OF HIGHWAYS		
TOWN OF SPRINGFIELD		
PROJECT	S. 0134 (1)	15A
APPROX. SCALE 1" = 50'	DATE 2-21-78	DRAWN BY FJM

126 8

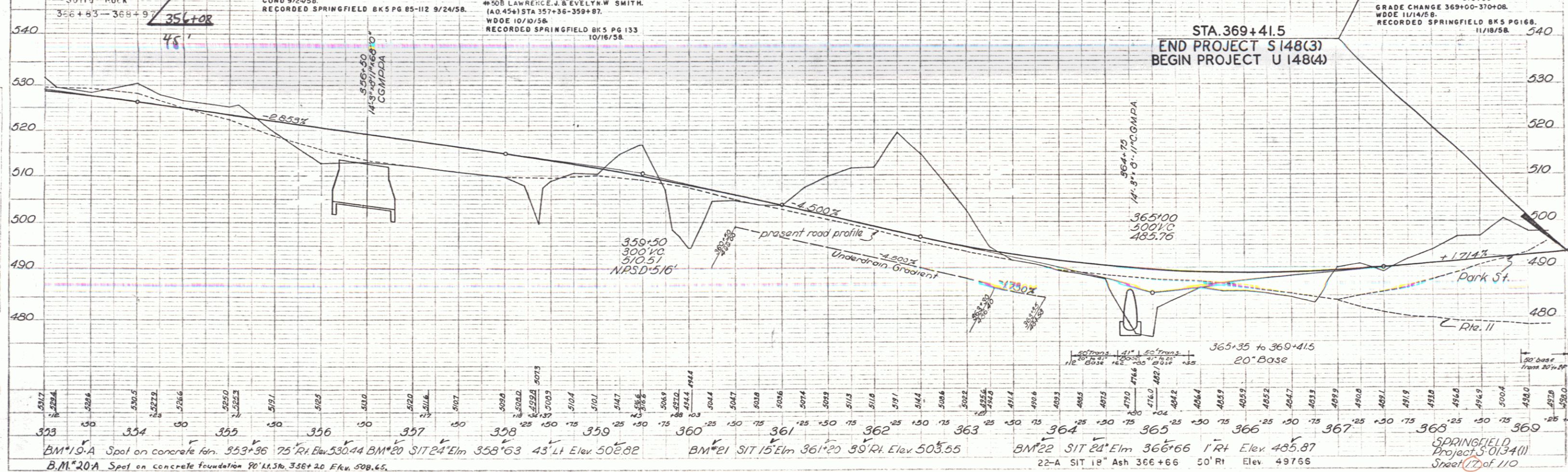
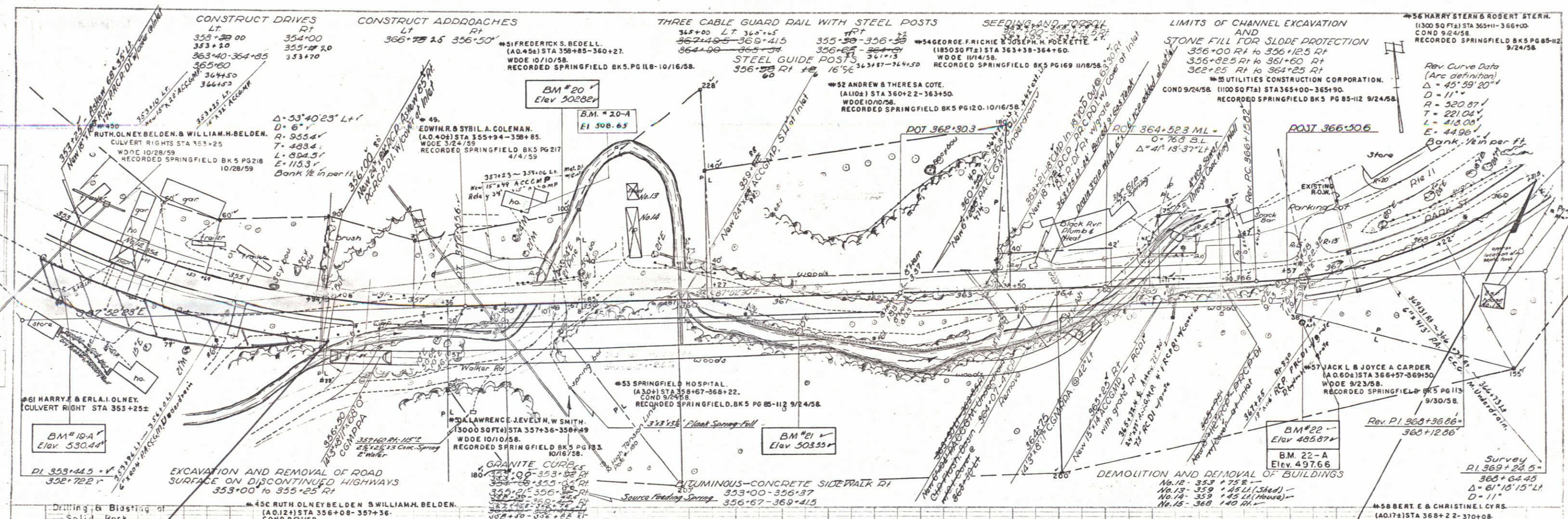


PLAN
 9/17/07
 9/17/07
 9/17/07

PROFILE
 9/17/07
 9/17/07
 9/17/07

0.35A² Spate of Yt. to
 Town of Springfield Q.C.D.
 12/21/04 BK? Pg.?

SPRINGFIELD
 Project 5013-11
 Sheet 10 of 110



DIST. 100 FT
 1" = 100 FT
 1" = 100 FT
 1" = 100 FT

DIST. 100 FT
 1" = 100 FT
 1" = 100 FT
 1" = 100 FT

BM#10-A Spot on concrete form. 353+96 75' RI. Elev. 530.44
 BM#20 SIT 24' Elm. 358+63 43' LI. Elev. 508.82
 BM#21 SIT 15' Elm. 361+20 50' RI. Elev. 503.55
 BM#22 SIT 24' Elm. 366+66 1' RI. Elev. 485.87
 22-A SIT 18' Ash 366+66 50' RI. Elev. 497.66