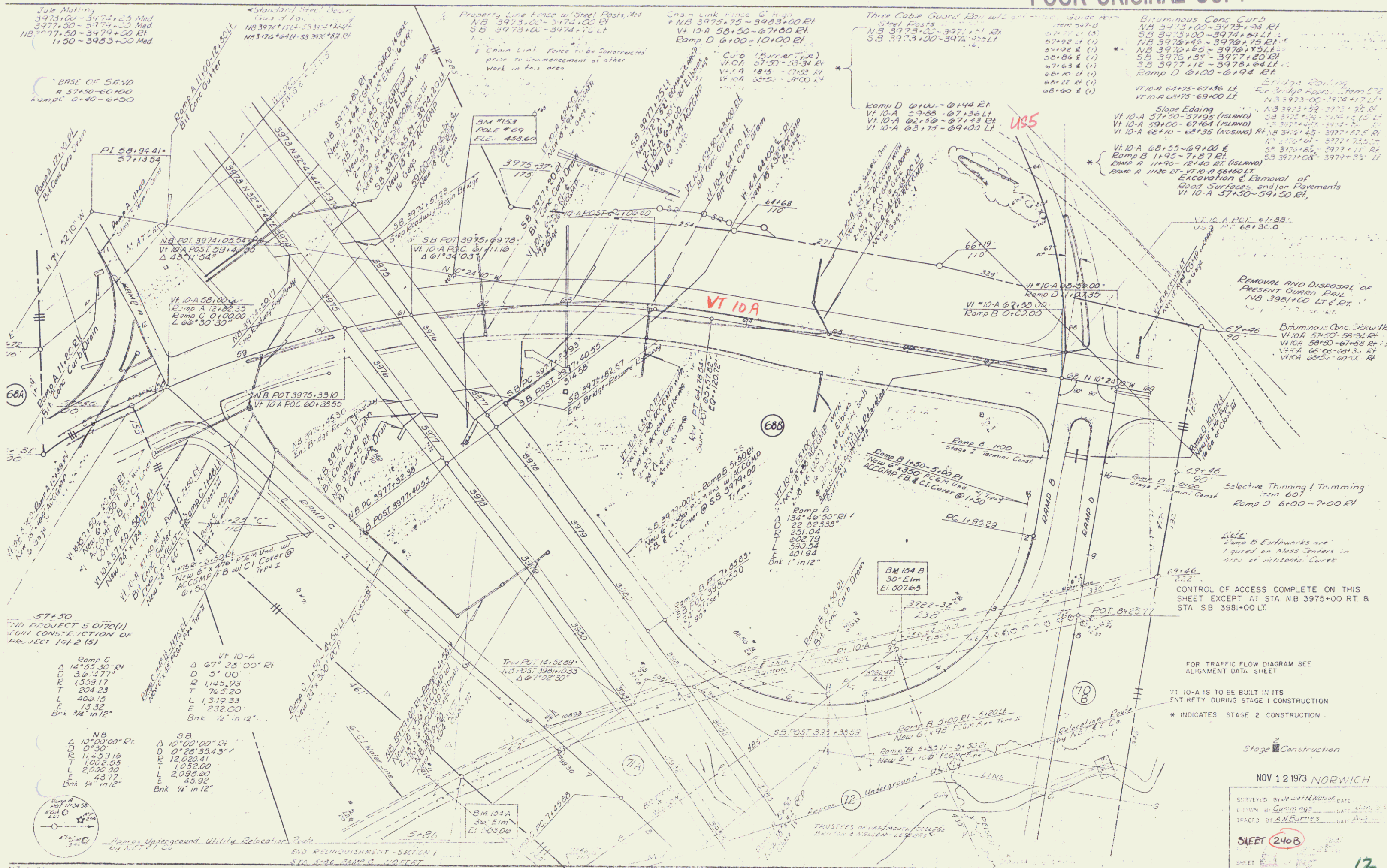


# POOR ORIGINAL COPY



57+30  
NO PROJECT 5 0170(1)  
WITH CONSTRUCTION OF  
PROJECT 1412 (5)

Ramp C	Δ 14°53'30" Rt	VT 10-A	Δ 67°28'00" Rt
D	3°53'17"	D	5° 00"
R	1509.17	T	1445.93
T	204.23	L	1319.33
L	400.15	E	232.00
E	13.32	Bank	1/2" in 12"
Bank	3/4" in 12"		

NB	Δ 10°00'00" Rt	SB	Δ 10°00'00" Rt
D	0° 30"	T	0° 28'35.43"
T	11,299.16	L	1082.00
L	1002.55	E	2,099.00
E	2,000.30	Bank	43.92
Bank	1/2" in 12"		

FOR TRAFFIC FLOW DIAGRAM SEE  
ALIGNMENT DATA SHEET

VT 10-A IS TO BE BUILT IN ITS  
ENTIRETY DURING STAGE 1 CONSTRUCTION  
\* INDICATES STAGE 2 CONSTRUCTION

NOV 12 1973 NORWICH

SHEET 240B