

INDEX OF SHEETS

SHEET NO. 1-1A	TITLE PAGE
2-3	TYPICAL CROSS-SECTION OF IMPROVEMENT (BITUMINOUS PAVEMENT ITEM 361) (CONCRETE ITEM 362)
4	QUANTITY SHEET (ITEM)
5	QUANTITY SHEET (DRAINAGE)
6-10	EARTHWORK SHEETS
11-25	PLAN AND PROFILE SHEETS
26	PRELIMINARY INFORMATION SHEET
27	PLAN SCALE 1" = 20'
28	PROFILE AND BORING SHEET
29	SUPERSTRUCTURE SHEET
30	SUPERSTRUCTURE AND END POST DETAILS
31	DETAILS OF ABUTMENT NO. 1 AND NO. 2
32	DETAILS OF PIER NO. 1 AND NO. 2
33	REINFORCING STEEL SHEET
34-45	CHANNEL SECTIONS
46	DETAIL OF 16" METAL PIPE AT STA. 216+55
47-51	CHANNEL SECTIONS AT STA. 216+50
52	BANKING TABLES RS 56-1
53	STANDARD STRUCTURE SHEET RS 56-2 (REINFORCED CONCRETE DROP INLET)
54	STANDARD STRUCTURE SHEET RS 56-3 (BOUNDARY MARKERS)
55	STANDARD STRUCTURE SHEET RS 56-4
56	STANDARD STRUCTURE SHEET RS 56-5 (GRANITE CURB)
57	STANDARD STRUCTURE SHEET RS 56-6 (TYPICAL SLOPE GRADING)
58	STANDARD STRUCTURE SHEET RS 56-11 (THREE CABLE GUARD RAIL WITH STEEL POSTS)
59	STANDARD STRUCTURE SHEET RS 56-12 (BARRICADES, SIGNS AND LIGHTS)
60	STANDARD STRUCTURE SHEET RS 56-14 (PRECAST REINFORCED CONCRETE PIPE DROP INLET)
61	STANDARD STRUCTURE SHEET SB 20-56 (DETAILS FOR W BRIDGES)
62-136	CROSS-SECTIONS

STATE OF VERMONT
DEPARTMENT OF HIGHWAYS

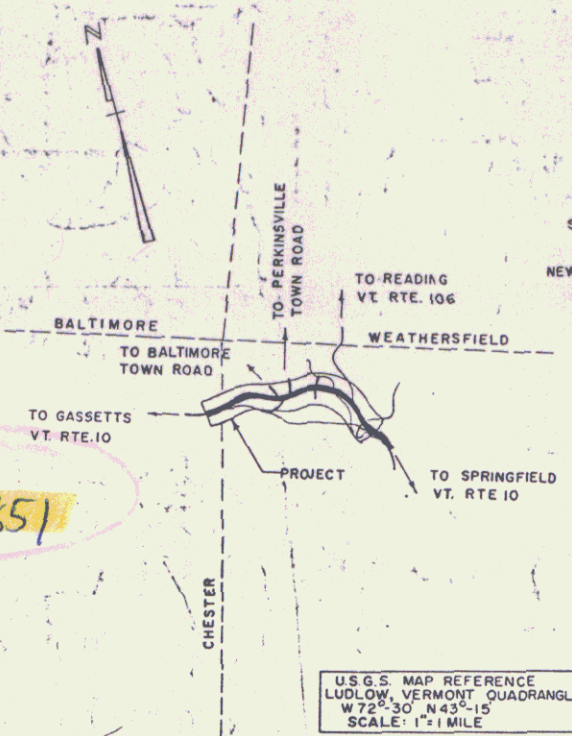
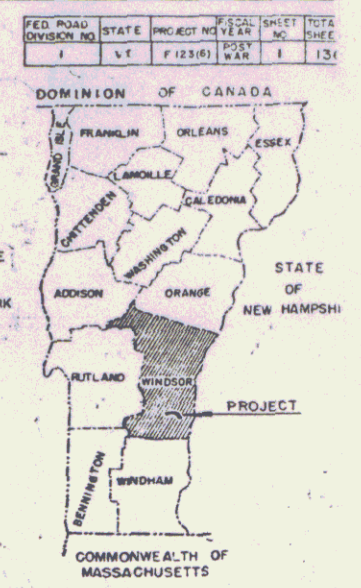
PROPOSED IMPROVEMENT

FEDERAL AID PROJECT

PLAN AND PROFILE OF PROPOSED
STATE HIGHWAY

TOWN OF SPRINGFIELD
COUNTY OF WINDSOR
SPRINGFIELD — GASSETTS ROAD
VERMONT ROUTE 10

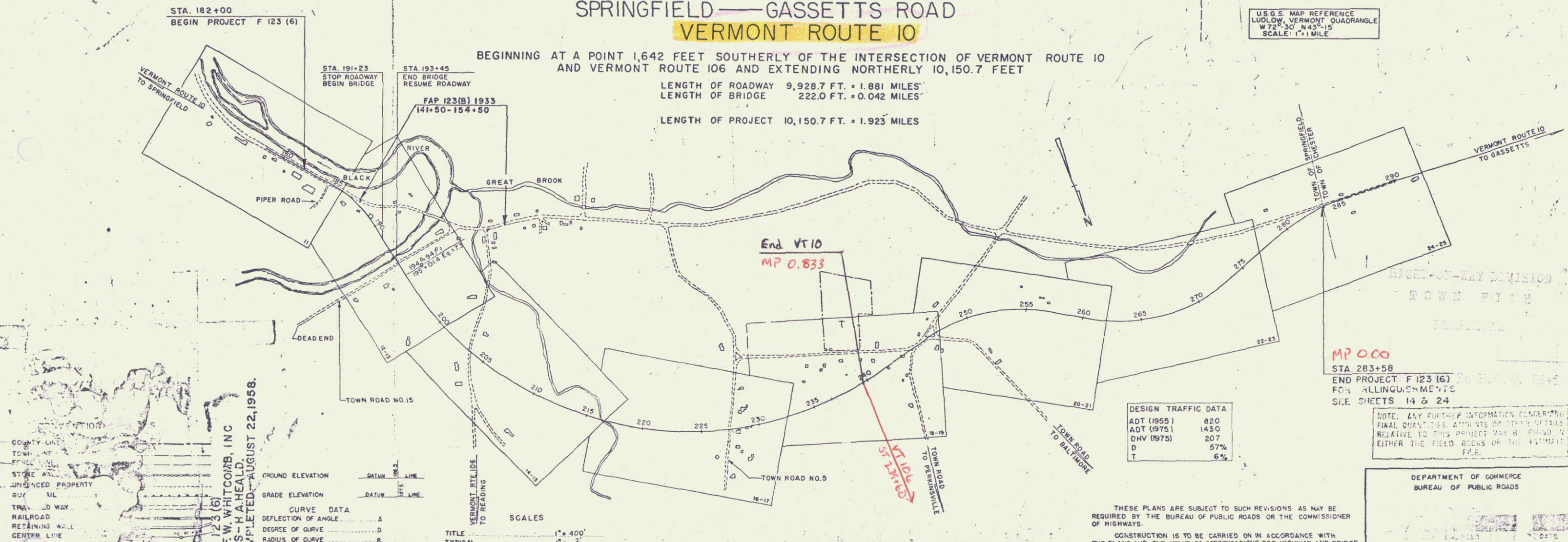
Pin# 992851



U.S.G.S. MAP REFERENCE
LUDLOW, VERMONT QUADRANGLE
W 72-30 W 43-15
SCALE: 1" = 1 MILE

BEGINNING AT A POINT 1,642 FEET SOUTHERLY OF THE INTERSECTION OF VERMONT ROUTE 10 AND VERMONT ROUTE 106 AND EXTENDING NORTHERLY 10,150.7 FEET

LENGTH OF ROADWAY 9,928.7 FT. = 1.881 MILES
LENGTH OF BRIDGE 222.0 FT. = 0.042 MILES
LENGTH OF PROJECT 10,150.7 FT. = 1.923 MILES



DESIGN TRAFFIC DATA

ADT (1955)	820
ADT (1975)	1430
DHV (1975)	207
D	57%
T	6%

NOTE: ANY FURTHER INFORMATION CONCERNING FINAL QUANTITIES AND DETAILS OF THIS PROJECT RELATIVE TO THIS PROJECT MAY BE FOUND IN EITHER THE FIELD BOOKS OR THE ESTIMATE FILE.

CONTRACTOR: F.W. WHITCOMB, INC.
RECORD PLANS - H.A. HEALD.
CONTRACT COMPLETED - AUGUST 22, 1958.

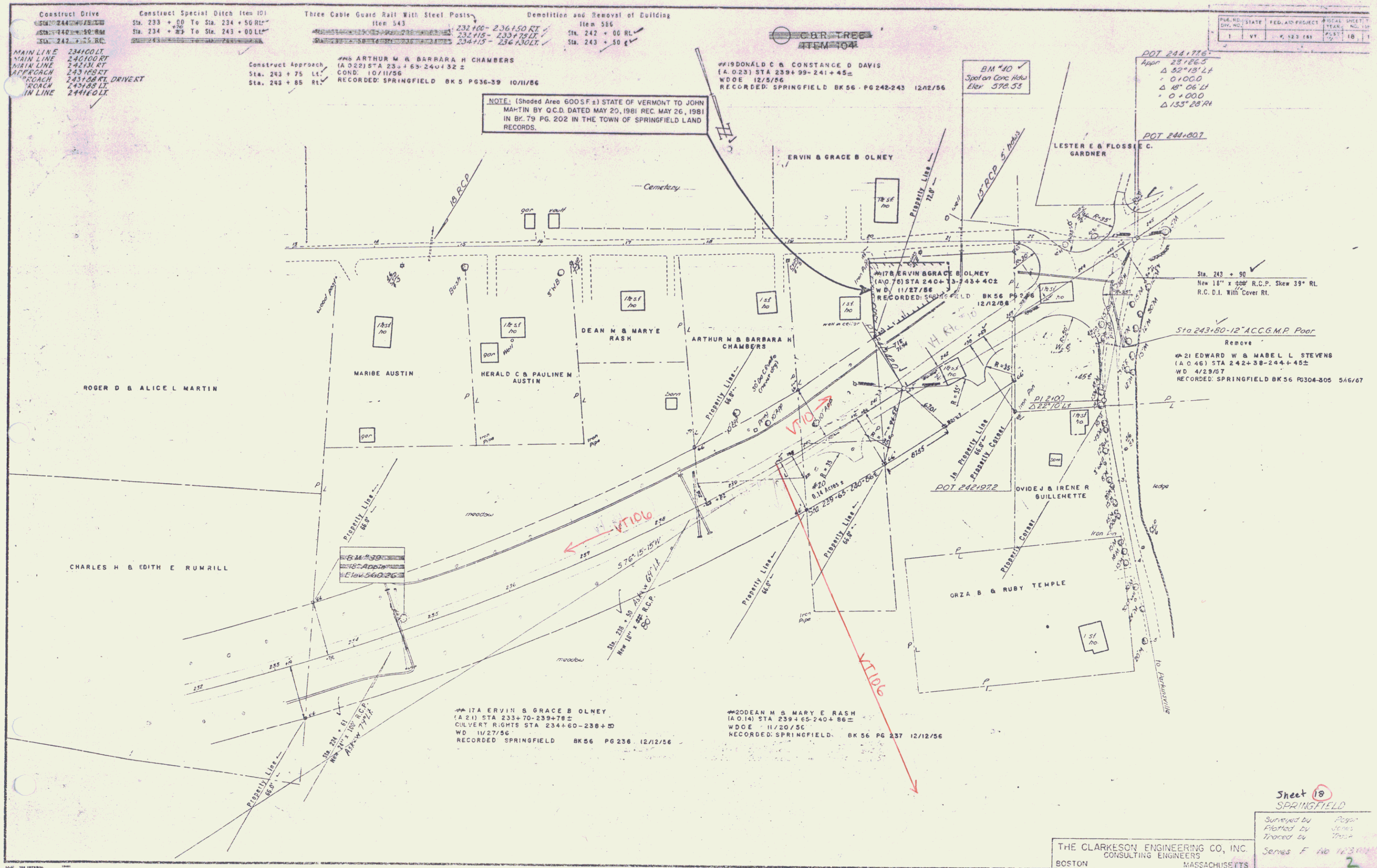
THE CLARKESON ENGINEERING CO., INC.
CONSULTING ENGINEERS
BOSTON MASSACHUSETTS

APPROVED: *E.C. Carter* DISTRICT ENGINEER DATE FEB. 4, 1957
APPROVED: *A.S. Bishop* BRIDGE ENGINEER DATE FEB. 4, 1957
APPROVED: *J.D. Chase* DISTRICT ENGINEER DATE FEB. 1, 1957
APPROVED: *H.E. August* HIGHWAY ENGINEER DATE FEB. 5, 1957

DEPARTMENT OF COMMERCE
BUREAU OF PUBLIC ROADS

APPROVED: _____ DATE _____
DIVISION ENGINEER

PROJECT: F 123 (6) NO. 123 (6)
SHEET 1 OF 136 SHEETS



Construct Drive
 Item 543
 Sta. 242 + 00 To Sta. 242 + 50 RL
 234100LT
 240100RT
 240130RT
 243100RT
 243100RT
 243100RT
 244100LT

Construct Special Ditch Item 101
 Sta. 233 + 00 To Sta. 234 + 50 RL
 Sta. 234 + 00 To Sta. 243 + 00 LT

Three Cable Guard Rail With Steel Posts
 Item 543
 232100 - 236150 RT
 234100 - 233150 LT
 234115 - 236130 LT
 Sta. 242 + 00 RL
 Sta. 243 + 50 RT

Demolition and Removal of Building
 Item 586
 #18 ARTHUR M & BARBARA H CHAMBERS
 (A.O. 22) STA 233 + 63-240 + 32 ±
 COND. 10/11/56
 RECORDED: SPRINGFIELD BK 5 PG 36-39 10/11/56

Demolition and Removal of Building
 Item 586
 #19 DONALD C & CONSTANCE D DAVIS
 (A.O. 23) STA 239 + 99-241 + 45 ±
 W.D.E. 12/5/56
 RECORDED: SPRINGFIELD BK 56 PG 248-243 12/2/56

NOTE: (Shaded Area 600 SF ±) STATE OF VERMONT TO JOHN MARTIN BY O.C.D. DATED MAY 20, 1981 REC. MAY 26, 1981 IN BK. 79 PG. 202 IN THE TOWN OF SPRINGFIELD LAND RECORDS.

PLAT NO.	STATE	FED. AID PROJECT	FISCAL SHEET
1	VT	5-123 (RM)	18

POT 2441776
 Appr. 23126.5
 Δ 32°18'14"
 = 0100.0
 Δ 87°06'14"
 = 0 + 00.0
 Δ 133°28'24"

POT 2441007

Sta. 243 + 99
 New 18" x 20" R.C.P. Shew 35° RL
 R.C.D.I. With Cover Rt.

Sta 243+80-12" ACC.G.M.P. Poor
 Remove

#21 EDWARD W & MABEL L STEVENS
 (A.O. 46) STA 242 + 38-244 + 45 ±
 W.D. 4/29/57
 RECORDED: SPRINGFIELD BK 56 PG 304-305 5/6/67

#17A ERVIN & GRACE B OLNEY
 (A.O. 14) STA 233 + 70-239 + 78 ±
 CULVERT RIGHTS STA 234 + 60-238 + 50
 W.D. 11/27/56
 RECORDED: SPRINGFIELD BK 56 PG 236 12/12/56

#20 DEAN M & MARY E RASH
 (A.O. 14) STA 239 + 65-240 + 86 ±
 W.D.E. 11/20/56
 RECORDED: SPRINGFIELD BK 56 PG 237 12/12/56

THE CLARKSON ENGINEERING CO., INC.
 CONSULTING ENGINEERS
 BOSTON MASSACHUSETTS

Sheet 18
 SPRINGFIELD
 Surveyed by Roger
 Plotted by James
 Traced by Tom
 Series F No 12301
 2

Three Cable Guard Rail With Steel Posts
Item 543

247+00 - 247+48 RT
249+65 - 253+20 RT
249+90 - 254+05 LT

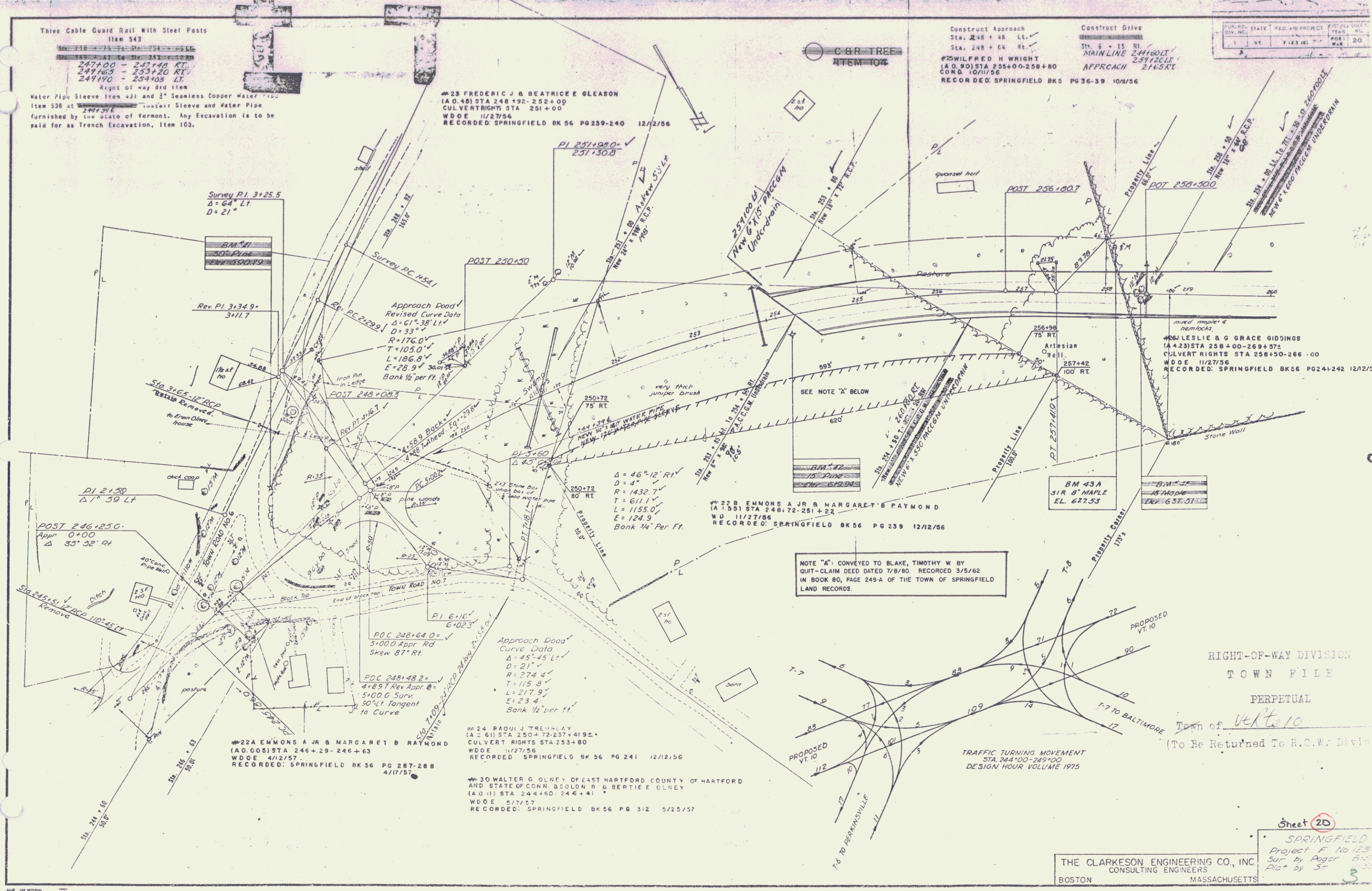
Right of way 810 Item
Water Pipe Sleeve Item 431 and 2" Seamless Copper Water Pipe
Item 538 at _____
furnished by the State of Vermont. Any Excavation is to be
paid for as Trench Excavation, Item 103.

#23 FREDERIC J & BEATRICE E GLEASON
(A.O. 48) STA 248+192-252+00
CULVERT RIGHTS STA 251+00
W.D.O.E. 11/27/56
RECORDED SPRINGFIELD BK 56 PG 239-240 12/12/56

Construct Approach
Sta. 248 + 48 Lt.
Sta. 248 + 04 Rt.
#25 WILFRED H WRIGHT
(A.O. 80) STA 255+00-258+80
COND. 10/11/56

Construct Drive
Sta. 6 + 15 Rt.
MAINLINE 24460LT
APPROACH 2465RT

STATE	FED. PROJ. NO.	POSTAL DIST.
VT	FILE NO.	POST NO.
		20



NOTE "A" CONVEYED TO BLAKE, TIMOTHY W BY
QUIT-CLAIM DEED DATED 7/8/80 RECORDED 3/5/82
IN BOOK 80, PAGE 249-A OF THE TOWN OF SPRINGFIELD
LAND RECORDS.

RIGHT-OF-WAY DIVISION
TOWN FILE
PERPETUAL
Town of VERMONT
(To Be Returned To R.C.W. Div.)

Sheet 20
SPRINGFIELD
Project F No 1231
Sur by Roger B...
Plotted by S...
THE CLARKSON ENGINEERING CO., INC.
CONSULTING ENGINEERS
BOSTON MASSACHUSETTS

Three Cable Guard Rail With Steel Posts
Item 543

STA 269+00 TO STA 276+00
269+00 - 276+00 LT
273+40 - 276+00 RT

Construct Drive

266+60 LT
271+00 RT
273+20 RT

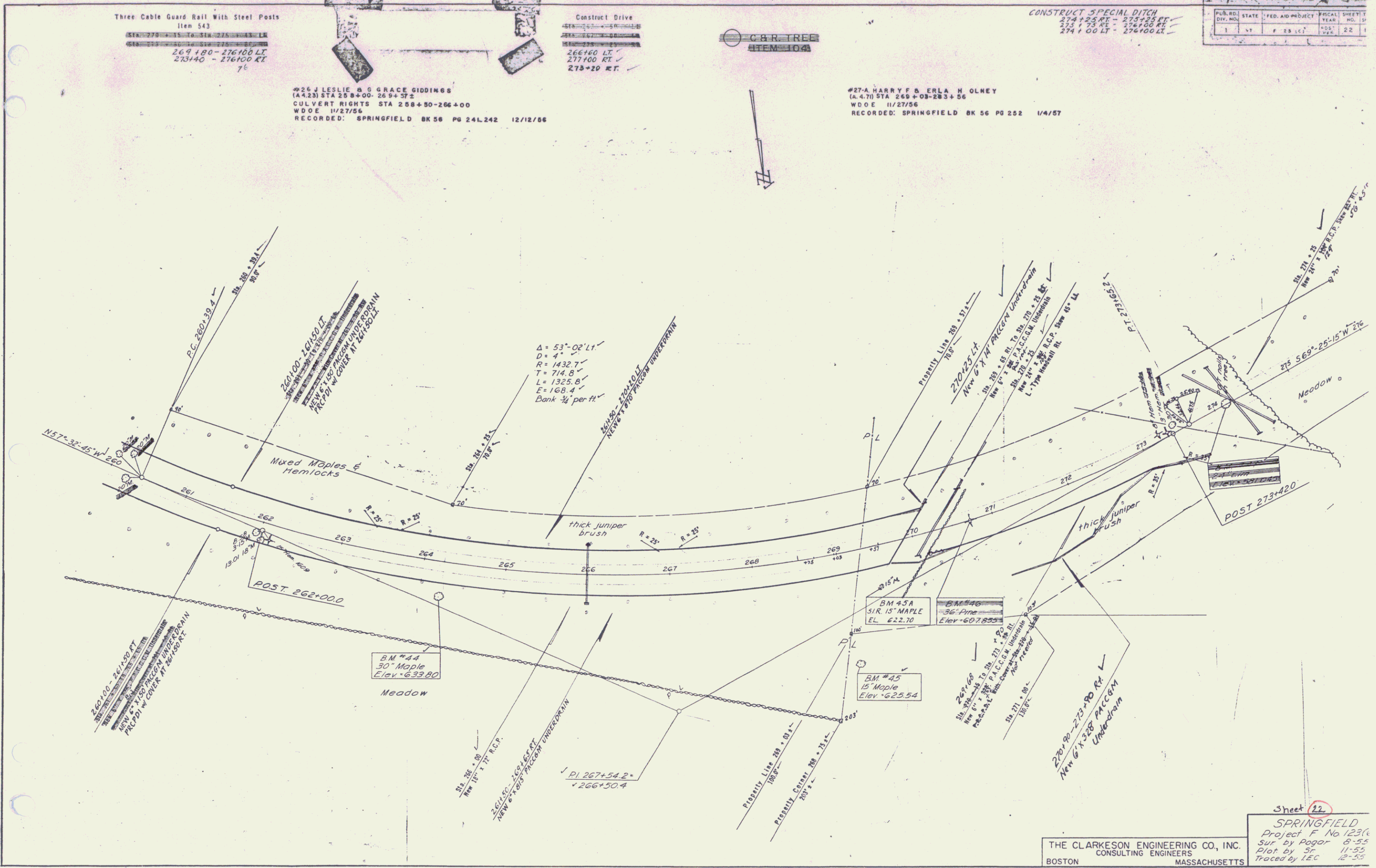
C.B.R. TREE
ATTEN 104

CONSTRUCT SPECIAL DITCH
274+25 RT - 275+25 RT
273+75 RT - 276+00 RT
274+00 LT - 276+00 LT

PUB. NO.	STATE	FED. AID PROJECT	FISCAL YEAR	SHEET NO.
1	VT	F 2816	1955	22

#26 J LESLIE & GRACE GIDDINGS
(A.4.23) STA 258+00-269+37.2
CULVERT RIGHTS STA 258+50-266+00
W.D.O.E. 11/27/56
RECORDED: SPRINGFIELD BK 58 PG 24L242 12/12/66

#27-A HARRY F & ERLA H HOLNEY
(A.4.71) STA 269+03-283+56
W.D.O.E. 11/27/56
RECORDED: SPRINGFIELD BK 56 PG 252 1/4/57



Sheet 22

SPRINGFIELD
Project F No 1231
Sup by Pogor 8-55
Plot by St. 11-55
Traced by IEC 12-55

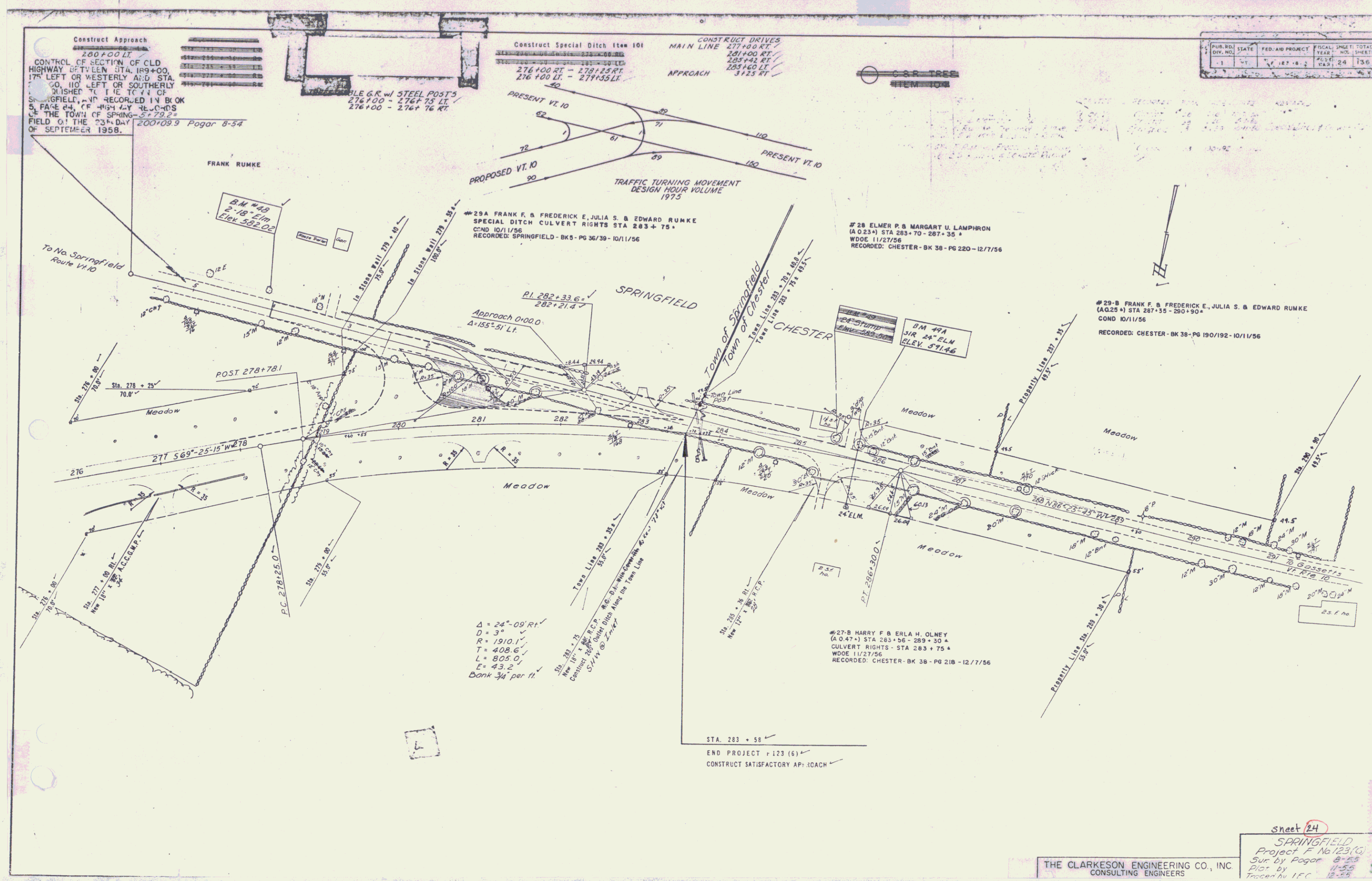
THE CLARKESON ENGINEERING CO., INC.
CONSULTING ENGINEERS
BOSTON MASSACHUSETTS

Construct Approach
 200+00 LT
 CONTROL OF SECTION OF CLD
 HIGHWAY OF TOWN STA. 189+00.
 17' LEFT OR WESTERLY AND STA.
 100.10 LEFT OR SOUTHERLY
 DISHED TO THE TOWN OF
 SPRINGFIELD, AND RECORDED IN BOOK
 5, PAGE 24, OF 1934 BY RECORDS
 OF THE TOWN OF SPRINGFIELD
 FIELD OF THE 23rd DAY
 OF SEPTEMBER 1958.
 200+09.9 Pagar 8-54

Construct Special Ditch Item 101
 276+00 RT - 278+25 RT
 276+00 LT - 277+35 LT

CONSTRUCT DRIVES
 MAIN LINE 277+00 RT
 281+00 RT
 283+42 RT
 283+40 LT
 APPROACH 3+123 RT

FED. NO.	STATE	FED. AID PROJECT	FISCAL YEAR	SHEET NO.	TOTAL SHEETS
1	VT	187-8-2	1958	24	136



Sheet 24
 SPRINGFIELD
 Project F No. 123(10)
 Sur by Pagar 8-54
 Plot by 11-58
 Traced by 12-58

THE CLARKSON ENGINEERING CO., INC.
 CONSULTING ENGINEERS