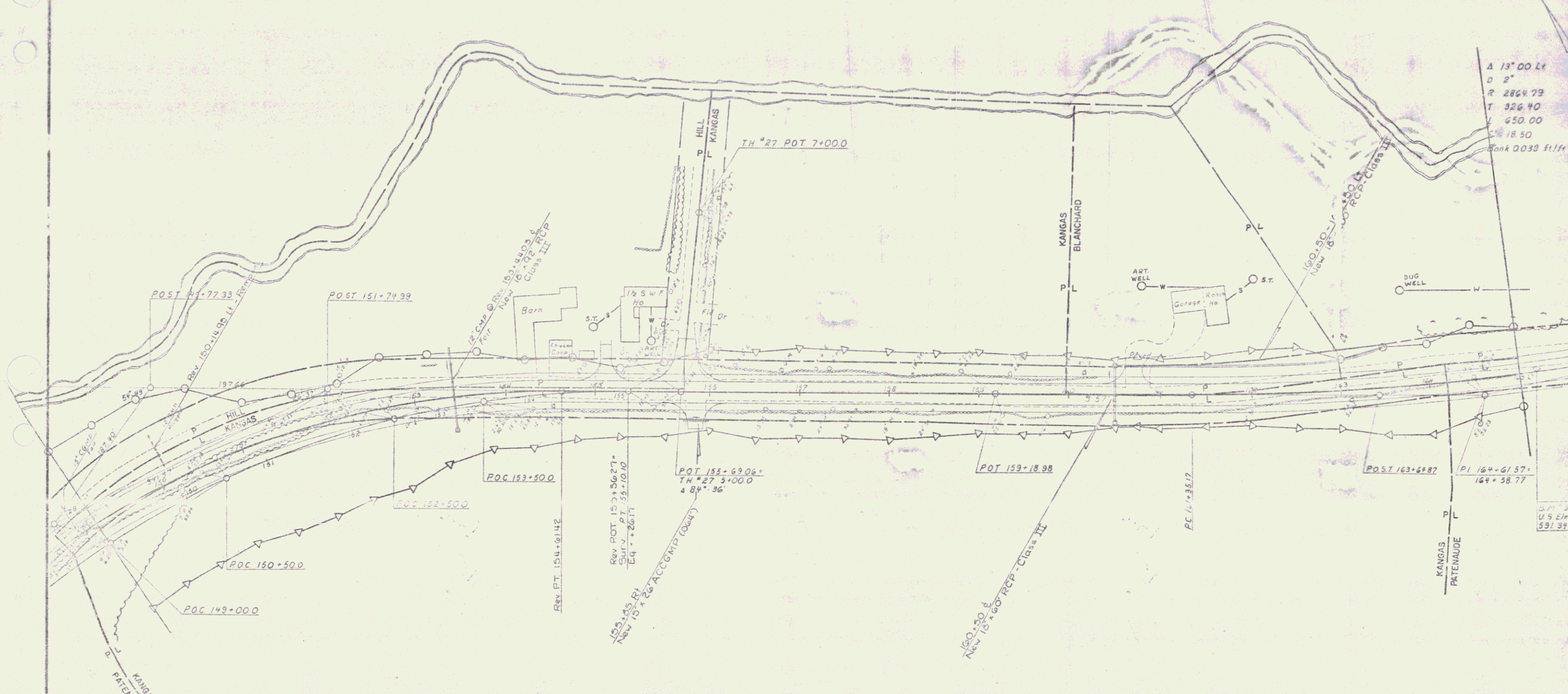


CONSTRUCT DRIVE
 Rev. 155+11 Lt.
 Surv. 153+05 Rt.
 160+75 Lt.

CONSTRUCT APPROACH
 Surv. 155+6A Lt @ 64'36" Lt.

Δ 13° 00' Lt
 D 2'
 R 2864.79
 T 326.40
 L 650.00
 C% 18.50
 Bank 0030 ft/ft



Survey
 Δ 81° 32' Rt
 D 5' 30"
 R 1041.74
 T 858.15
 L 1402.92
 E 333.72
 Bank 0.07 ft/ft

Revised
 Δ 51° 32' Rt.
 D 6'
 R 954.93'
 T 823.50'
 L 1358.09'
 E 305.91'
 Bank 0.077 ft/ft.

SECTION III
 CHESTER
 SURVEYED BY: Gillman DATE: 10-78
 DRAWN BY: Gillman DATE: 11-78
 TRACED BY: Gillman DATE: 11-78
 PINK H/S NO. 016-2(4)
 SHEET 13 OF 17