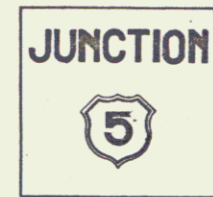


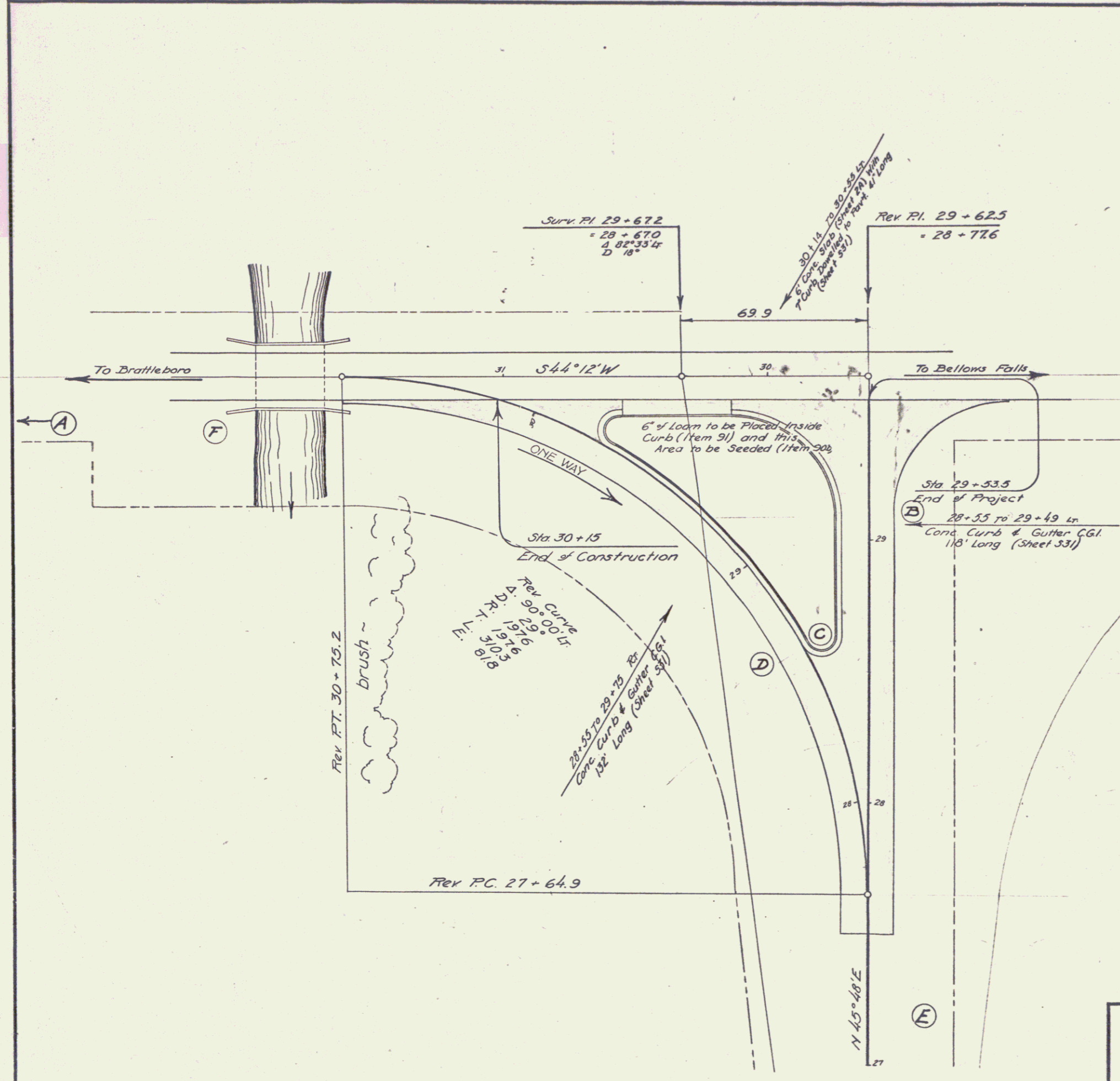
500 FT. TO  
JUNCTION  
ROUTE 9



These signs are to be furnished, erected, & maintained by the State of Vermont and not included in the contract.

DETAILS OF INTERSECTION  
SCALE 1" = 20'

Grades on one lane turn to Brattleboro to be as shown on cross-sections.



ESTIMATED QUANTITIES

--	--

Surveyed by A.A. Doe  
Designed by  
Drawn by L.M. Bjorn  
Traced by L.M. Bjorn  
Checked by  
Series WPGS No. 214A Filed  
Sheet 6 of 33 Sheets