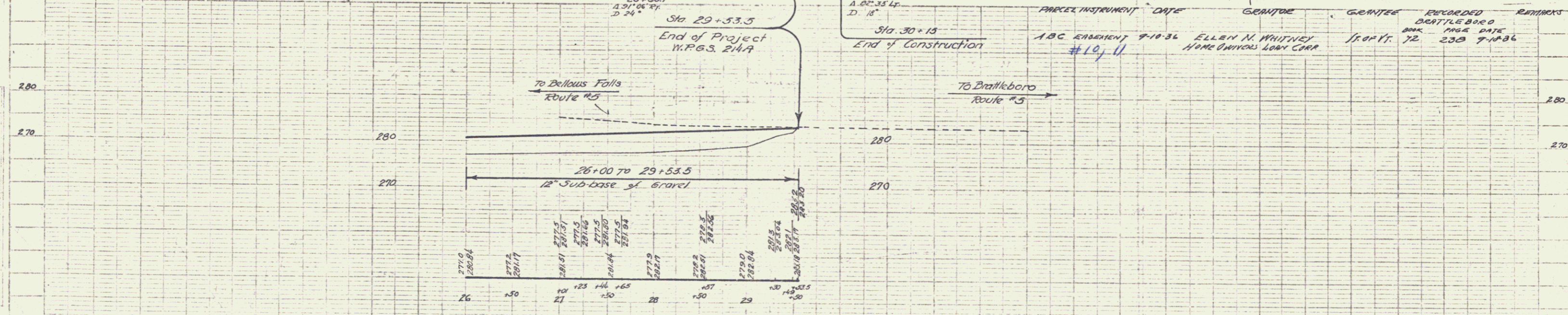
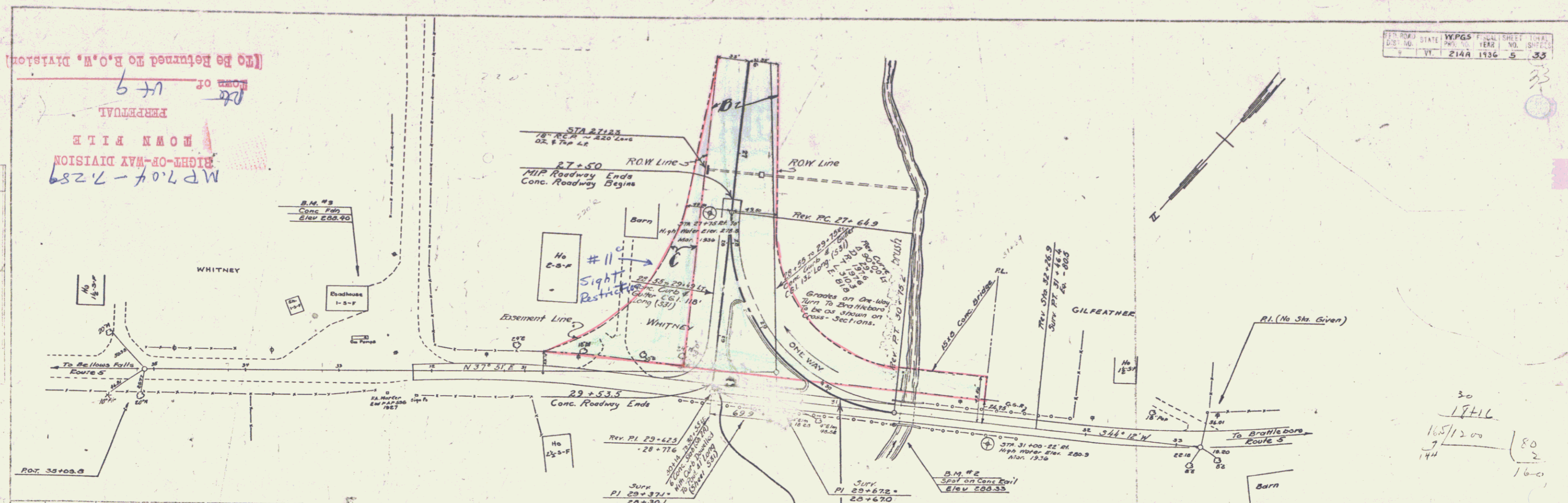


(To Be Returned to R.O.W. Division)

MP 7.04-7.289
 RIGHT-OF-WAY DIVISION
 HOME FILE
 PERPETUAL
 49

DATE	
BY	
CHKD.	
APP.	
APPROVED	
DATE	



PARCEL INSTRUMENT	DATE	GRANTEE	GRANTEE	RECORDED	REMARKS
ABC EMBLEMENT	9-10-36	ELLEN M. WHITNEY	1/2 of 1/2	72	238 9-19-36
	#10, 11	HOME OWNERS LOAN CORP.			

B.M. #2 Spot on NW Corner Bridge Rail Elev. 288.33
 B.M. #3 Spot on Conc. Gas Pump Felt Jet of old Road With U.S. #5 Elev. 288.40

MM 0704-0728
 Brattleboro

Serves W.P.G.S. No. 214A
 Sheet 3 of 33