

INDEX OF SHEETS

SHEET NO.	TITLE PAGE
1	TITLE PAGE
2	TYPICAL CROSS-SECTION OF IMPROVEMENT & SUMMARY OF QUANTITIES
3-6	LAYOUT SHEETS

FED. ROAD DIST. NO.	STATE	FED. AID PROJ. NO.	FISCAL YEAR	SHEET NO.	TOTAL SHEETS
9	VT.	132C	1936	1	6

(LANDSCAPING)

STATE OF VERMONT
STATE HIGHWAY DEPARTMENT

PLAN AND PROFILE OF PROPOSED
STATE HIGHWAY
FEDERAL AID PROJECT

ROADSIDE IMPROVEMENT
PLANTING PLANS

TOWN OF BRATTLEBORO
BRATTLEBORO-BENNINGTON ROAD
ROUTE VT 9

Pin # 99R845

PROPOSED PLANTING

TREES PINUS RESINOSA 5'-6' (Red Pine)



EXISTING GROWTH

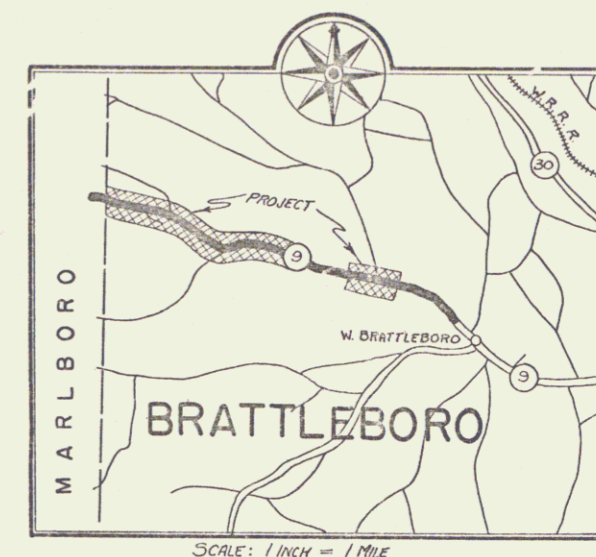


FROM STA. 79 + 00 OF STATE PROJECT 132-A, WESTERLY TO THE BRATTLEBORO-MARLBORO TOWN LINE, EXCLUDING FROM STA. 103 + 00-136 + 00 OF STATE PROJECT 132-A

LENGTH OF PROJECT 13,944.6 FT. = 2.641 MILES

SCALES

TYPICAL SECTIONS: AS INDICATED
LAYOUTS 1" = 50'



RIGHT-OF-WAY DIVISION
TOWN FILE

PERPETUAL

Town of Brattleboro
(To Be Returned To R.O.W. Division)

APPROVED: April 6, 1936

SUBMITTED BY ORDER OF THE STATE HIGHWAY BOARD

Brattleboro
MP 3.272-2.817
MP 2.189-0.00

CONVENTIONAL SIGNS

COUNTY LINE	GROUND ELEVATION	DATE	LINE
TOWN LINE	GRADE ELEVATION	DATE	LINE
FENCE LINE			
STONE WALL			
UNFENCED PROPERTY, R.O.W.			
GUARD RAIL			
TRAVELED WAY, (UN-METALLED)			
(METALLED)			
RETAINING WALL			
CENTER LINE			
SURVEY LINE			
CULVERT			
DROP INLET			
TROLLEY POLE			
POWER POLE			
TELEPHONE POLE			
TREES			
HEDGE			

CURVE DATA

DEFLECTION ANGLE	Δ
DEGREE OF CURVE	D
RADIUS OF CURVE	R
TANGENT DISTANCE	T
LENGTH OF CURVE	L
EXTERNAL DISTANCE	E
POINT OF INTERSECTION	P. I.
POINT OF CURVE	P. C.
POINT OF TANGENT	P. T.
POINT ON TANGENT	P. O. T.

NOTE

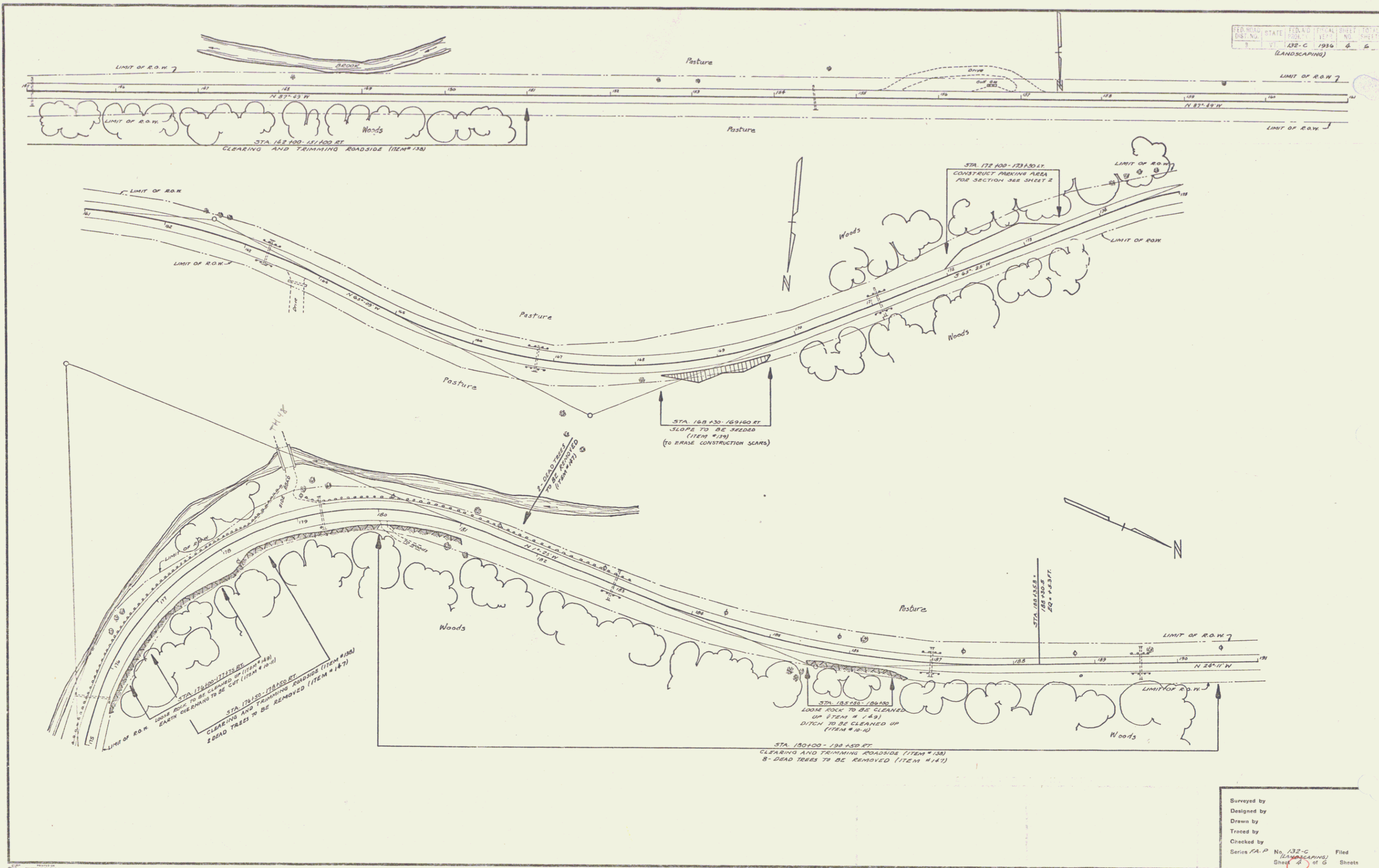
These plans are subject to such revisions as may be required by the Bureau of Public Roads or the Commissioner of Highways. Construction is to be carried on in accordance with the plans and Standard Road and Bridge Specifications of 1930, including all subsequent approved revisions and such revised specifications and special provisions as are submitted with the plans.

RECOMMENDED [Signature]
DISTRICT ENGINEER BUREAU OF PUBLIC ROADS

RECOMMENDED FOR APPROVAL [Signature]
CHIEF ENGINEER BUREAU OF PUBLIC ROADS

APPROVED [Signature]
DIRECTOR - BUREAU OF PUBLIC ROADS

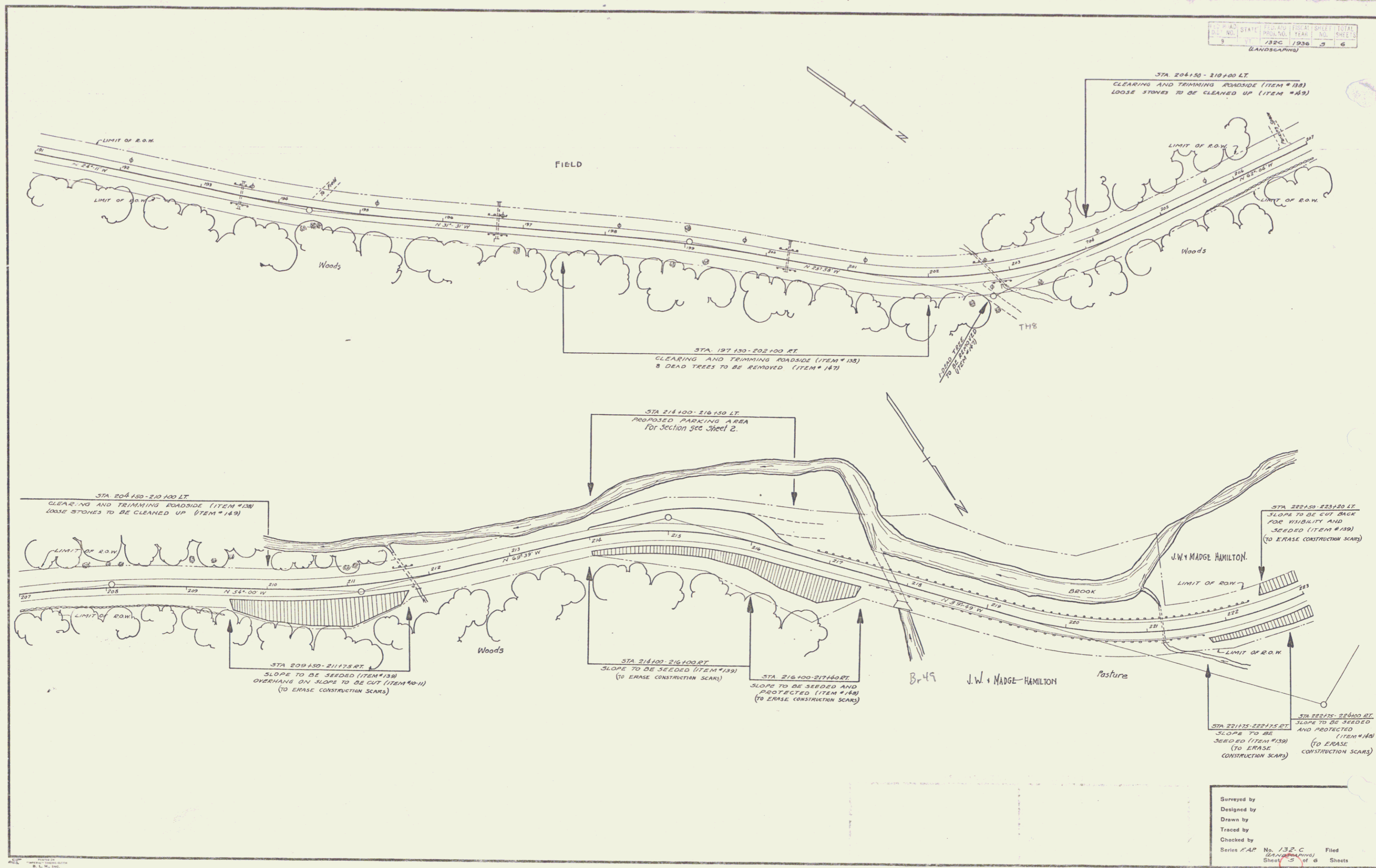
SERIES F.A.P. No. 132C FILED
SHEET 1 OF 6 (LANDSCAPING)



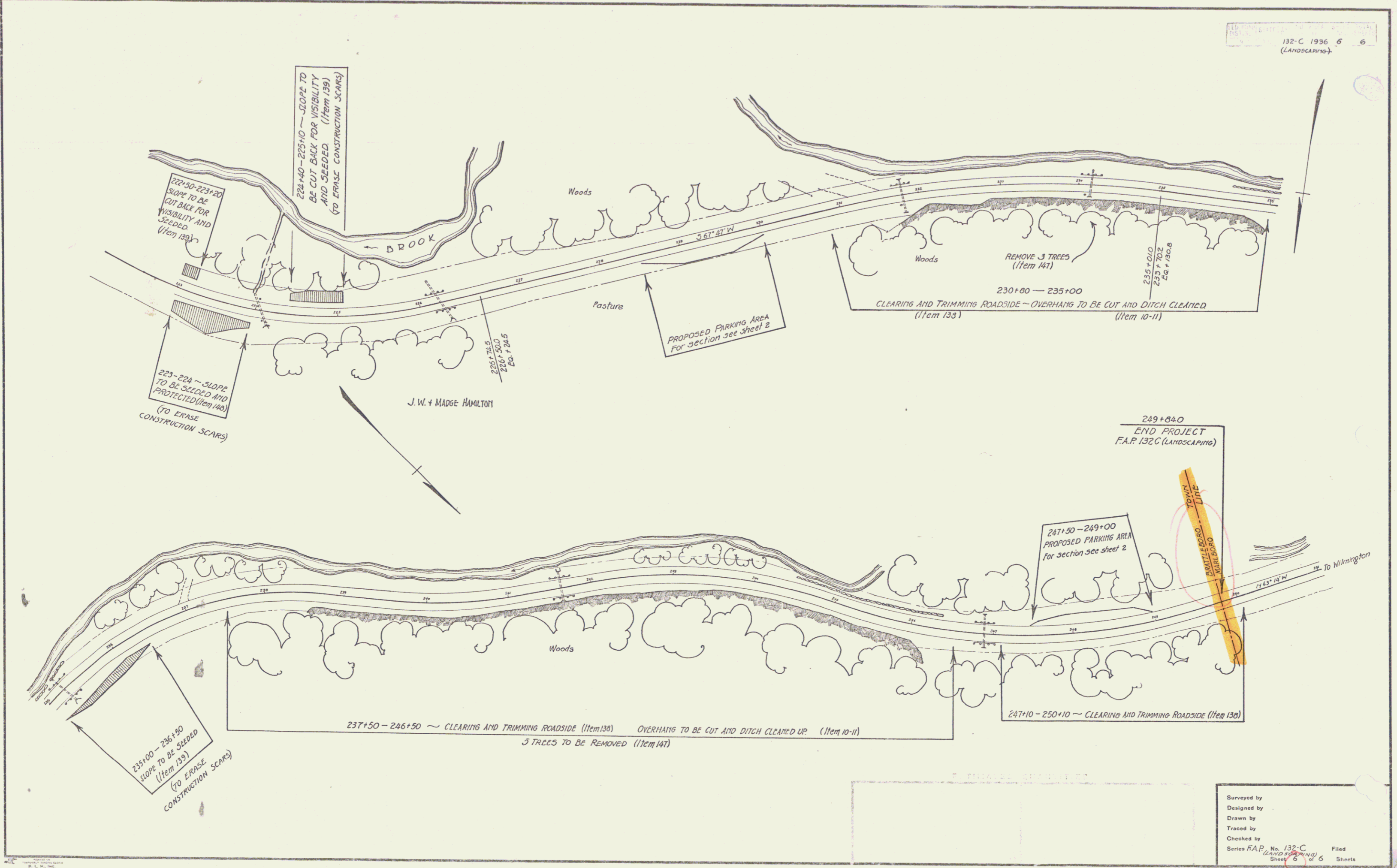
Surveyed by
 Designed by
 Drawn by
 Traced by
 Checked by
 Series CA-P No. 132-C Filed
 (LANDSCAPING) Sheet 4 of 6 Sheets

PROJECT NO.	STATE	FISCAL YEAR	SHEET NO.	TOTAL SHEETS
132C	VT	1936	3	6

LANDSCAPING



Surveyed by
 Designed by
 Drawn by
 Traced by
 Checked by
 Series P.A.P. No. 132.C Filed
 (Landscape) Sheet 3 of 6 Sheets



Surveyed by
 Designed by
 Drawn by
 Traced by
 Checked by
 Series F.A.P. No. 132-C Filed
 (LANDSCAPING) Sheet 6 of 6 Sheets

5