

INDEX OF SHEETS

SHEET NO.	TITLE PAGE
1	TITLE PAGE
2	TYPICAL CROSS-SECTION OF IMPROVEMENT (26' GRAVEL)
3	BANKING AND WIDENING TABLES
4	PLAN AND PROFILE
5	DETAILS OF ABUTMENTS (REVISED FOR 24' ROW)
6	SIB. 60'SKEW-USE ONE SPAN AT 84'-0" OVER ALL (REVISED FOR 24' ROW)
7	S.B. NO. 5C-CABLE RAIL
8	S.B. NO. 11-BARRICADES, LIGHTS, ETC.
9	S.B. NO. 20-TYPICAL DETAILS, S103, S105, S111.
10	SERIES S NO. 30-STANDARD STRUCTURES-CABLE GUARD RAIL.
11-16	CROSS SECTIONS

STANDARD STRUCTURE SHEETS APPROVED
BY THE CHIEF ENGINEER
SHEET 530 AUGUST 15, 1933

STATE OF VERMONT
STATE HIGHWAY DEPARTMENT

PLAN AND PROFILE OF PROPOSED
STATE HIGHWAY
FEDERAL AID PROJECT

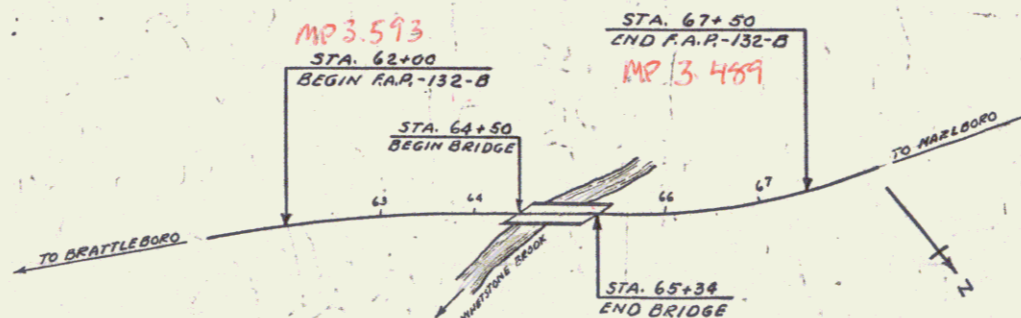
TOWN OF BRATTLEBORO Pin# 99R844

BRATTLEBORO - WILMINGTON ROAD

BRIDGE OVER WHETSTONE BROOK

ON ROUTE NO. 9 BEGINNING AT A POINT 1.083 MILES WEST OF THE
JUNCTION OF ROUTE 9 AND THE WEST BRATTLEBORO-HINESBURG
ROAD & EXTENDING WESTERLY 0.104 MILES.

LENGTH EXCLUDING BRIDGE 466.0 FT. = 0.088 MILES
LENGTH INCLUDING BRIDGE 550.0 FT. = 0.104 MILES



CONVENTIONAL SIGNS

COUNTY LINE	GROUND ELEVATION
TOWN LINE	GRADE ELEVATION
FENCE LINE		
STONE WALL		
UNFENCED PROPERTY		
GUARD RAIL		
TRAVELED WAY		
RAILROAD		
RETAINING WALL		
CENTER LINE		
SURVEY LINE		
CULVERT		
DROP INLET		
TROLLEY POLE		
POWER POLE		
TELEPHONE POLE		
TREES		
HEDGE		

CURVE DATA

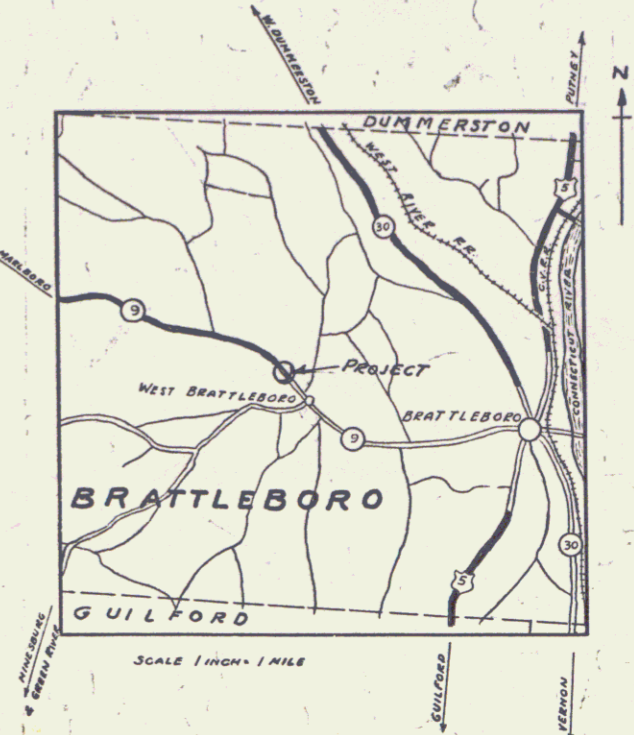
DEFLECTION ANGLE	Δ
DEGREE OF CURVE	D
RADIUS OF CURVE	R
TANGENT DISTANCE	T
LENGTH OF CURVE	L
EXTERNAL DISTANCE	E
POINT OF INTERSECTION	P. I.
POINT OF CURVE	P. C.
POINT OF TANGENT	P. T.
POINT ON TANGENT	P. O. T.

SCALES

TITLE	1" = 100'
TYPICAL	1" = 2'
PLAN	1" = 20'
PROFILE	HOR. 1" = 20'
	VER. 1" = 10'
CROSS SECTIONS	1" = 5'

THESE PLANS ARE SUBJECT TO SUCH REVISIONS AS MAY BE REQUIRED BY THE
BUREAU OF PUBLIC ROADS OR THE COMMISSIONER OF HIGHWAYS.
CONSTRUCTION IS TO BE CARRIED ON IN ACCORDANCE WITH THE PLANS AND
STANDARD ROAD AND BRIDGE SPECIFICATIONS OF 1936, INCLUDING ALL SUBSEQUENT
APPROVED REVISIONS, AND SUCH REVISED SPECIFICATIONS AND SPECIAL PROVISIONS AS
ARE SUBMITTED WITH THE PLANS.

FED. ROAD DIST. NO.	STATE	FED. AID PROJ. NO.	FISCAL YEAR	SHEET NO.	TOTAL SHEETS
9	Vt.	132-B	1936	1	16



RIGHT-OF-WAY DIVISION
TOWN FILE
PERPETUAL

Town of VT9
(To Be Returned To R.O.W. Division)

APPROVED: Sept. 10, 1936
[Signature]
COMMISSIONER OF HIGHWAYS

SUBMITTED BY ORDER OF THE STATE HIGHWAY BOARD

Route VT9

RECOMMENDED [Signature] DISTRICT ENGINEER BUREAU OF PUBLIC ROADS

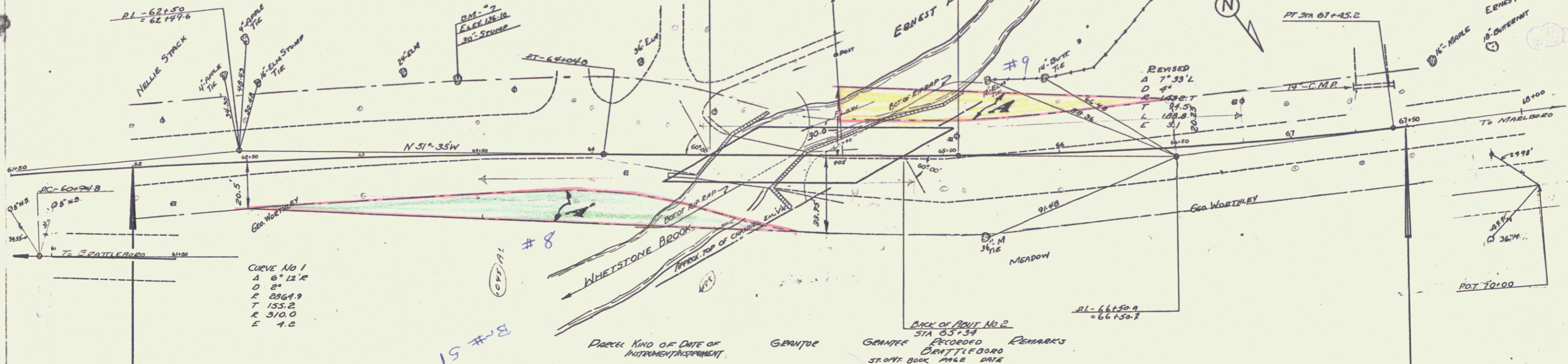
RECOMMENDED FOR APPROVAL [Signature] CHIEF ENGINEER BUREAU OF PUBLIC ROADS

APPROVED [Signature] DIRECTOR BUREAU OF PUBLIC ROADS

CORRECT [Signature] BRIDGE ENGINEER

SERIES F.A.R. NO. 132-B FILED
SHEET 1 OF 16

CABLE GUARD RAIL, INCLUDING BRIDGE
 LEFT STA 64+46 TO 66+50 } 422 ft
 RIGHT STA 63+30 TO 65+38 }
 4 ANCHORS REQ'D



FED. ROAD DIST. NO.	STATE	FISCAL YEAR	SHEET NO.	TOTAL SHEETS
132-B	MASS.	1956	4	46

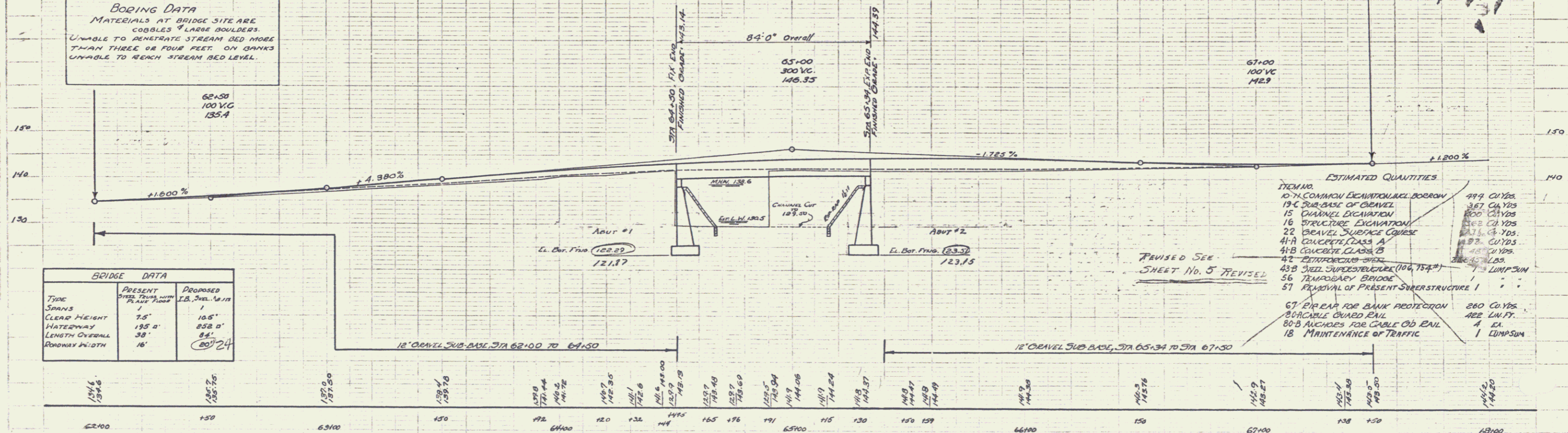
CURVE NO 1
 R 2364.9
 L 155.2
 E 310.0
 C 4.2

PARCEL	KIND OF INSTRUMENT	DATE OF INSTRUMENT	GRANTEE	GRANTEE	RECORDED	REMARKS
9	M.D.	12-24-36	ERNEST P. LOUIS DELAPLANTE	ST. ONE BOOK 448 PAGE 172	291	12-24-36
8	A.	11-27-36	G. W. L. E. WORTHLEY	" 72 276	11-27-36	

BEGINNING OF PROJECT
 STA 62+00 F.A.P. 132-B

END OF PROJECT-STA 67+50
 F.A.P. 132-B

BOILING DATA
 MATERIALS AT BRIDGE SITE ARE
 COBBLES & LARGE BOULDERS.
 UNABLE TO PENETRATE STREAM BED MORE
 THAN THREE OR FOUR FEET. ON BANKS
 UNABLE TO REACH STREAM BED LEVEL.



BRIDGE DATA		
TYPE	PRESENT	PROPOSED
SPANS	1	1
CLEAR HEIGHT	7.5'	10.5'
WATERWAY	195'	252'
LENGTH OVERALL	38'	84'
ROADWAY WIDTH	16'	20' 2"

ESTIMATED QUANTITIES

10-74 COMMON EXCAVATION	494 CU YDS.
19-C SUB-BASE OF GRAVEL	387 CU YDS.
15 CHANNEL EXCAVATION	800 CU YDS.
16 STRUCTURE EXCAVATION	362 CU YDS.
22 GRAVEL SURFACE COURSE	271 CU YDS.
41-A CONCRETE CLASS A	153 CU YDS.
41-B CONCRETE CLASS B	45 CU YDS.
42-REINFORCING BARS	14,400 LBS.
43-B STEEL SUPERSTRUCTURE (100, 154)	1 LUMP SUM
56 TEMPORARY BRIDGE	1 LUMP SUM
57 REMOVAL OF PRESENT SUPERSTRUCTURE	1 LUMP SUM
67 PIPE RAIL FOR BANK PROTECTION	280 CU YDS.
80-CABLE GUARD RAIL	422 LIN. FT.
80-B RAILS FOR CABLE GUARD RAIL	4 EA.
18 MAINTENANCE OF TRAFFIC	1 LUMP SUM

BM No. 7 SPIKE IN ROOT OF 30' L.M. 33' L.I. @ STA 63+4.2, EL. 136.10

W. BRATTLEBORO
 WHETSTONE BROOK BRIDGE
 SHEET 4/46 F.A.P. 132-B