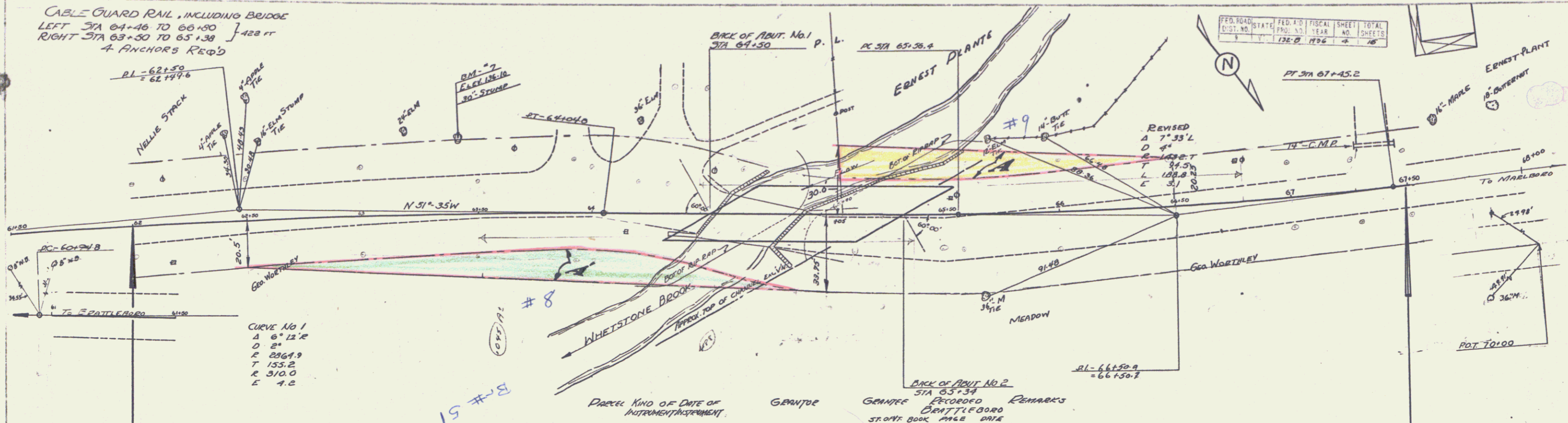


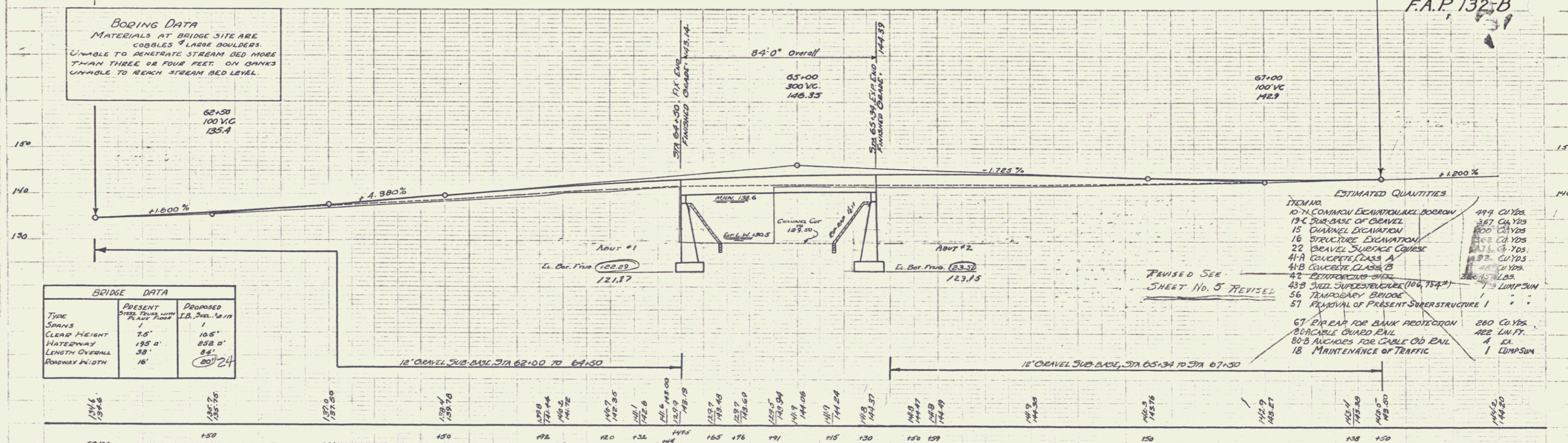
CABLE GUARD RAIL, INCLUDING BRIDGE
LEFT STA 64+46 TO 66+50 } 122 ft
RIGHT STA 63+30 TO 65+38 }
4 ANCHORS REQ'D



BEGINNING OF PROJECT
STA 62+00 F.A.P. 132-B

END OF PROJECT-STA 67+50
F.A.P. 132-B

BOILING DATA
MATERIALS AT BRIDGE SITE ARE
COBBLES & LARGE BOULDERS.
UNABLE TO PENETRATE STREAM BED MORE
THAN THREE OR FOUR FEET. ON BANKS
UNABLE TO REACH STREAM BED LEVEL.



BM No. 7 SPIKE IN ROOT OF 30' L.M. 33' L' @ STA 63+4.2, EL. 136.10

W. BRATTLEBORO
WHETSTONE BROOK BRIDGE
JUN 1916 F.A.P. 132-B