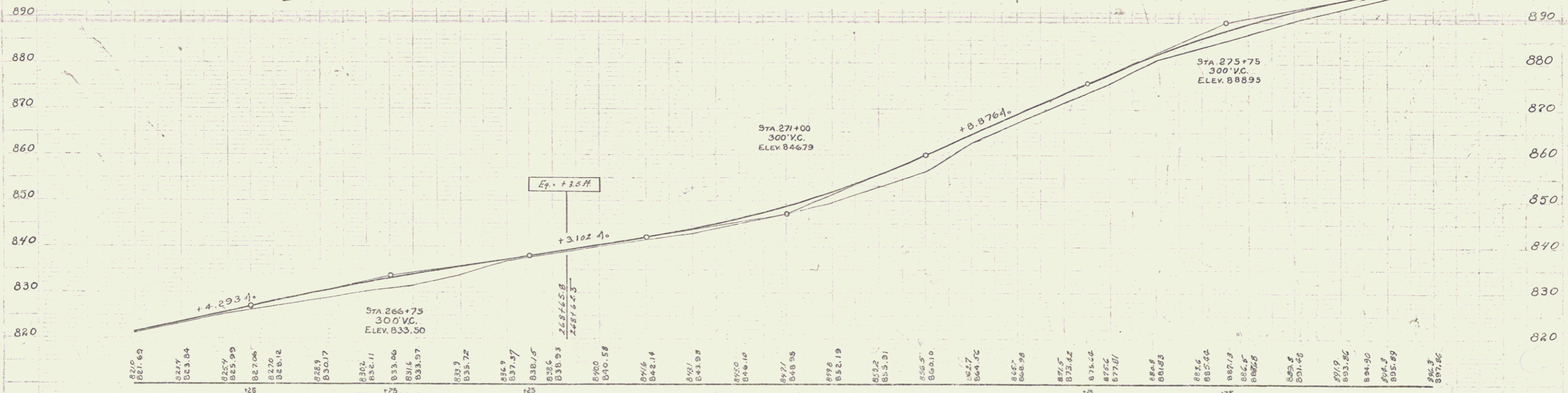
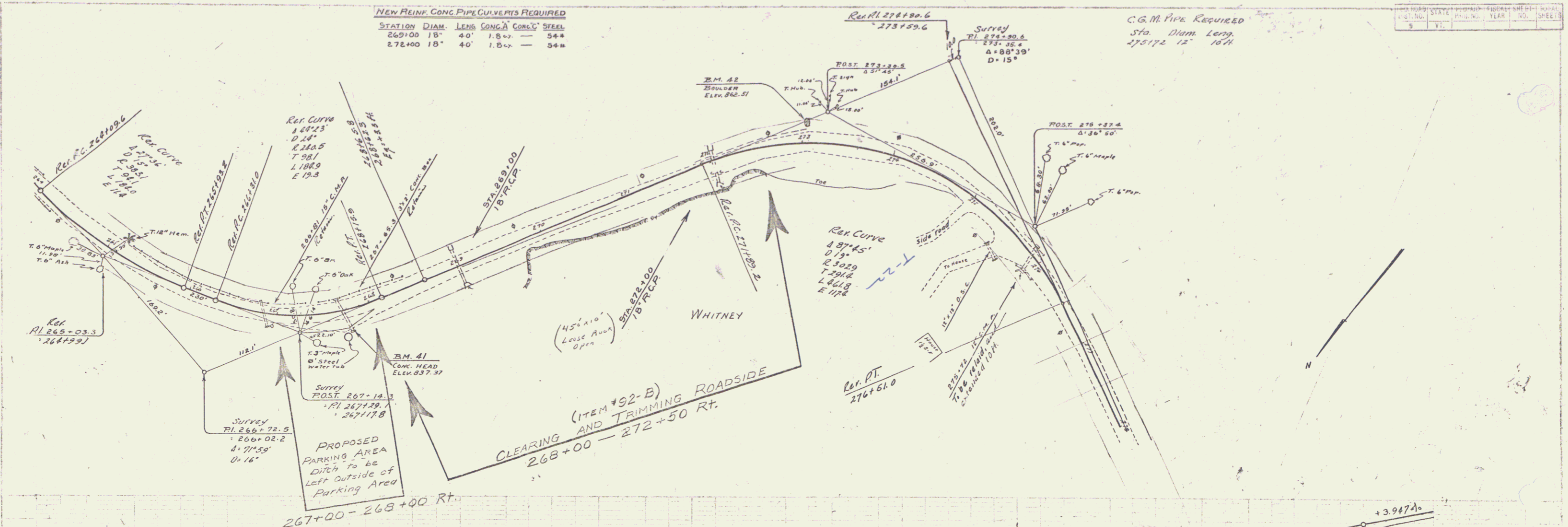


**NEW REINF. CONC. PIPE CULVERTS REQUIRED**

STATION	DIAM.	LENG.	CONC.	STEEL
269+00	18" 40"	1.84	—	54#
272+00	18" 40"	1.84	—	54#

**C.G.M. PIPE REQUIRED**  
Sta. Diam. Leng.  
275+72 12' 10"

NO.	STATE	PROJ.	YEAR	SHEET
9	VI.			



B.M. #41 N.W. cor. culvert h.w. 35' rt. Sta 267+73 Elev. 837.37  
 B.M. #42 1/2 way at end of g.r. 45' rt. Sta 273+00 Elev. 842.51  
 B.M. #43 on 4' boulevard in field ft. Elev. 833.85

SHEET 20 OF 20  
 SERIES F No. 132-A

20