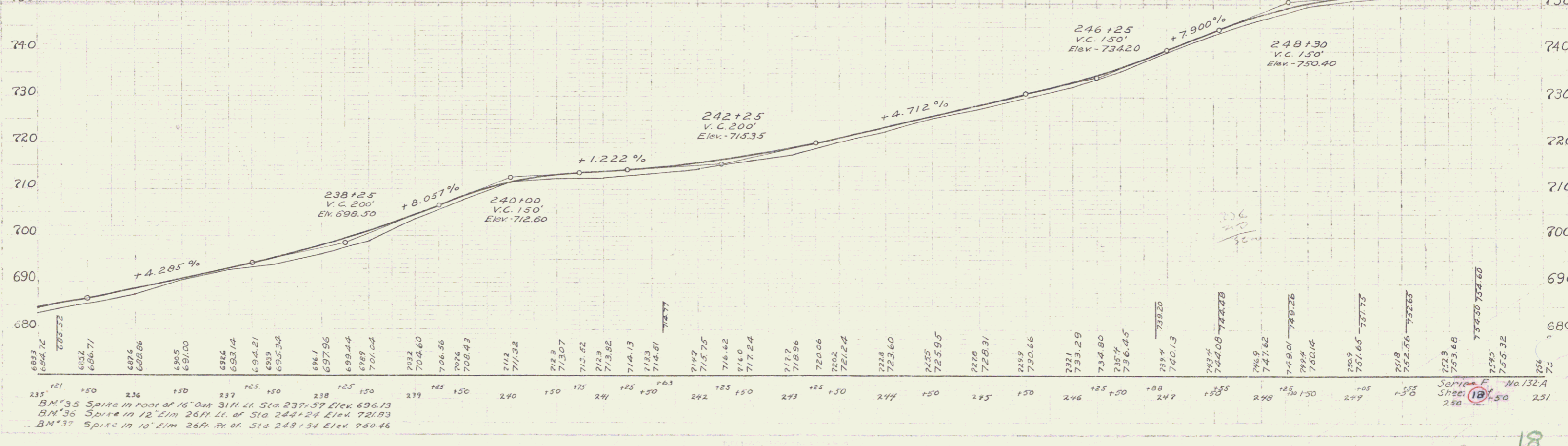
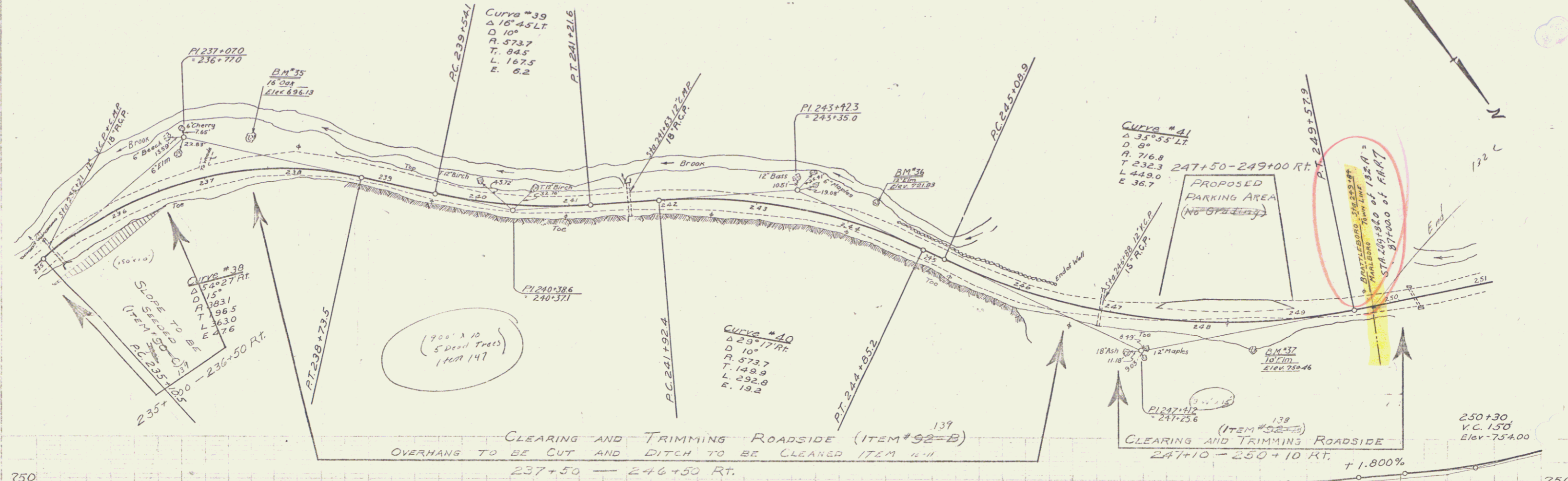


NEW REIN. CONC. PIPE CULVERTS REQUIRED

STATION	DIAM.	LENG.	CONC.	CONC.	STEEL
235+21	18"	44'	1.04	1.54	44#
241+63	18"	36'	2.64	—	102#
246+88	18"	40'	—	2.34	33#



BM\*35 Spike in foot of 16" dia 31H Lt. Sta 237+37 Elev. 696.13  
 BM\*36 Spike in 12" Elm 26H Lt. of Sta 244+24 Elev. 721.93  
 BM\*37 Spike in 10" Elm 26H Rt. of Sta 248+54 Elev. 750.46