

INDEX OF SHEETS

| SHEET NO | TITLE PAGE |
|----------|--|
| 2 | TYPICAL CROSS-SECTION OF IMPROVEMENT |
| 3 | PLAN AND PROFILE STA. 0+00 TO STA. 13+00 |
| 4 | " " " 13+00 " 28+00 |
| 5 | " " " 28+00 " 43+00 |
| 6 | " " " 43+00 " 58+00 |
| 7 | " " " 58+00 " 73+00 |
| 8 | " " " 73+00 " 87+00 |
| 9-16 | CROSS-SECTIONS |

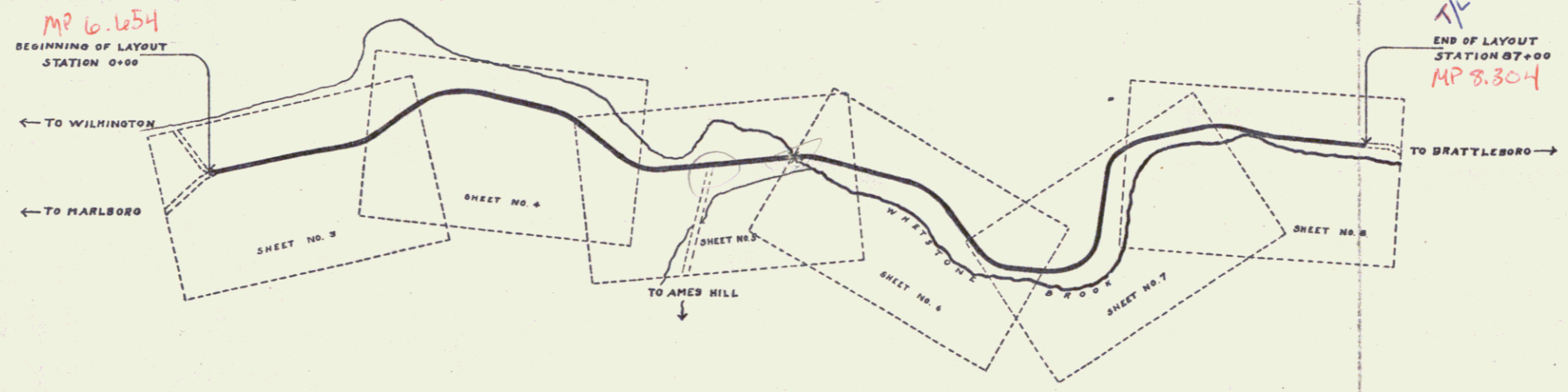
| FED. ROAD DIST. NO. | STATE | FED. AID PROJ. NO. | FISCAL YEAR | SHEET NO. | TOTAL SHEETS |
|---------------------|-------|--------------------|-------------|-----------|--------------|
| 0 | VT. | 7 | 1917 | 1 | 16 |

STATE OF VERMONT
STATE HIGHWAY DEPARTMENT

PLAN AND PROFILE OF PROPOSED
STATE HIGHWAY
FEDERAL AID PROJECT
TOWN OF MARLBORO
BRATTLEBORO-WILMINGTON ROAD
FROM CHURCH HOLLOW CORNERS TO BRATTLEBORO LINE

Pin # 99R842

SCALES PLAN 1" = 80' PROFILE HORIZ. 1" = 20' VERT. 1" = 10' CROSS-SECTIONS 1" = 8' 0"



RIGHT-OF-WAY DIVISION
TOWN FILE
PERPETUAL
Rte. Town of U 9
(To Be Returned To R.O.W. Division)

| | | |
|---------------------|--------|-----|
| PROJECT NUMBER | LENGTH | MI. |
| <i>Marlboro</i> | | |
| TYPE | | |
| <i>F-7</i> | | |
| CONTRACTOR | | |
| <i>see file and</i> | | |
| LOCATION | | |
| <i>see file and</i> | | |
| YEAR 19 | | |
| <i>20</i> | | |

CONVENTIONAL SIGNS

| | | | |
|--|-----------------------|-------|------|
| | GROUND ELEVATION | DATE | NAME |
| | GRADE ELEVATION | DATE | NAME |
| | CURVE DATA | | |
| | DEFLECTION ANGLE | Δ | |
| | DEGREE OF CURVE | D. | |
| | RADIUS OF CURVE | R. | |
| | TANGENT DISTANCE | T. | |
| | LENGTH OF CURVE | L. | |
| | EXTERNAL DISTANCE | E. | |
| | POINT OF INTERSECTION | P. I. | |
| | POINT OF CURVE | P. C. | |
| | POINT OF TANGENT | P. T. | |

LAYOUT
SCALE 500 FE = 1 INCH.

RECOMMENDED _____

STATE ENGINEER _____

SUBMITTED _____

STATE HIGHWAY COMMISSIONER _____

RECOMMENDED _____

DISTRICT ENGINEER _____

OFFICE OF PUBLIC ROAD AND RAIL ENGINEERING

RECOMMENDED FOR APPROVAL _____

APPROVED _____

DIRECTOR OFFICE OF PUBLIC ROAD AND RAIL ENGINEERING

Route VT 9
Date 1/1/1920

Series F No. 7 Filed
Sheet 7 of 16

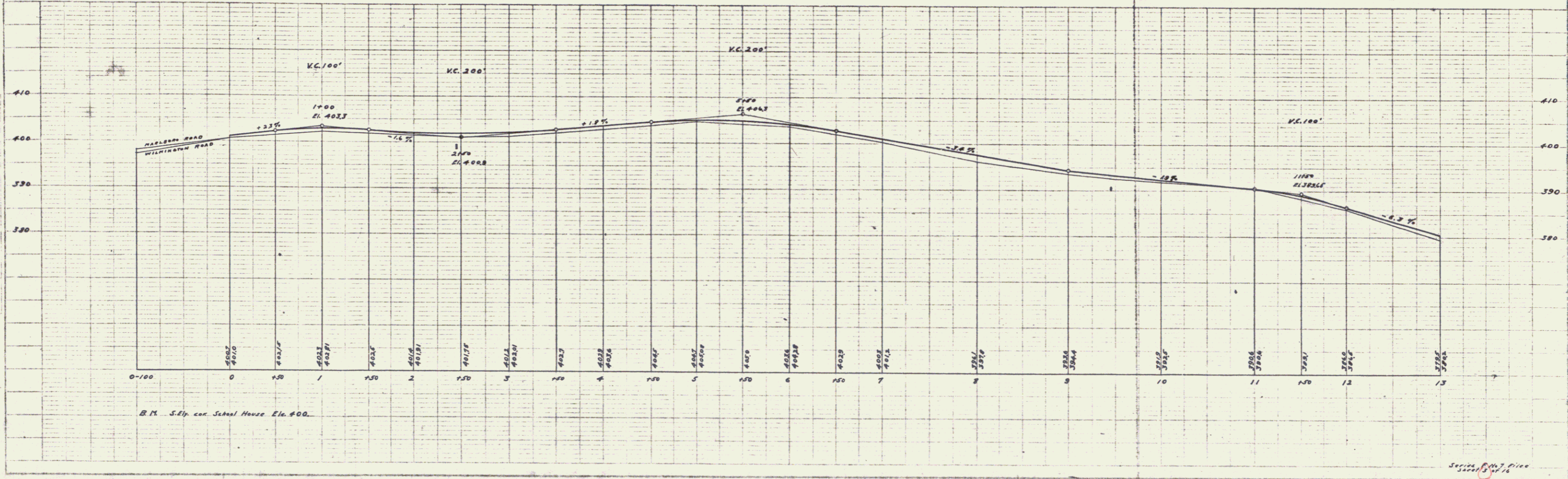
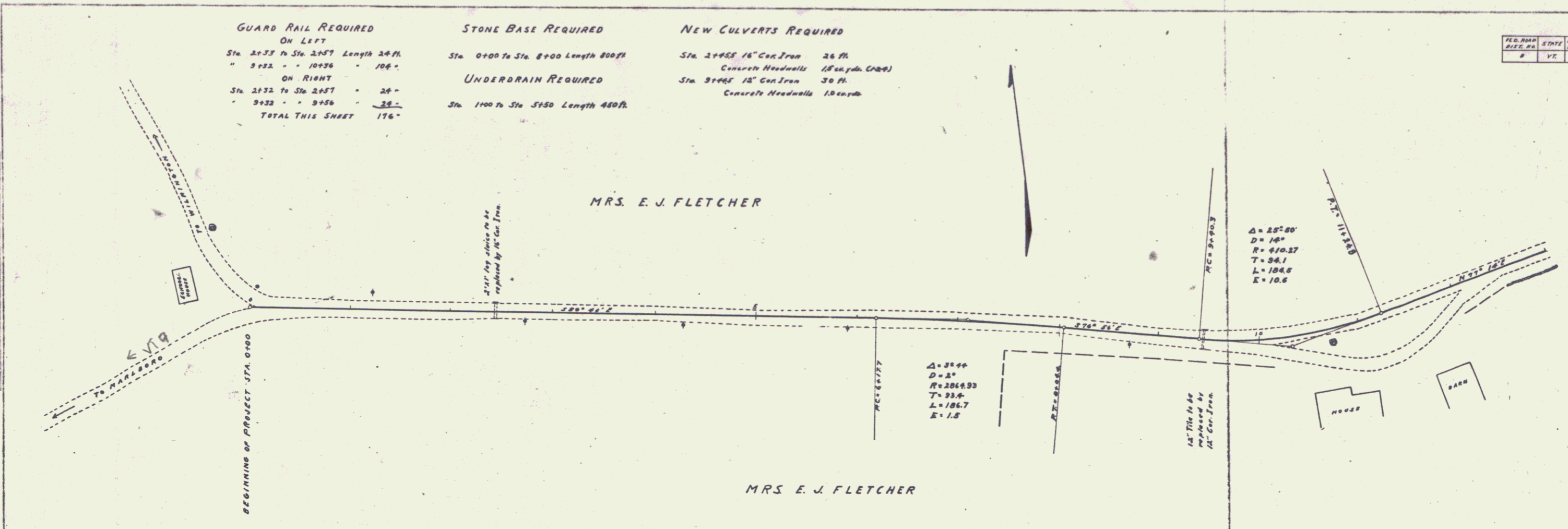
GUARD RAIL REQUIRED
 ON LEFT
 Sta. 2+33 To Sta. 2+57 Length 24 ft.
 " 3+32 " " 10+36 " 70 ft.
 ON RIGHT
 Sta. 2+32 To Sta. 2+57 " 25 ft.
 " 3+32 " " 9+56 " 24 ft.
TOTAL THIS SHEET 176 ft.

STONE BASE REQUIRED
 Sta. 0+00 To Sta. 8+00 Length 800 ft.
UNDERDRAIN REQUIRED
 Sta. 1+00 To Sta. 5+50 Length 450 ft.

NEW CULVERTS REQUIRED
 Sta. 2+955 16" Con. Iron 26 ft.
 Concrete Headwalls 18" x 18" (C&D)
 Sta. 3+065 15" Con. Iron 30 ft.
 Concrete Headwalls 18" x 18"

| FED. ROAD DIST. NO. | STATE | FED. AID PROJ. NO. | FISCAL YEAR | TOTAL LENGTH | SHEET NO. | TOTAL SHEETS |
|---------------------|-------|--------------------|-------------|--------------|-----------|--------------|
| 2 | VT | 2 | 1918 | 3 | 16 | |

PLAN
 DATE: 11/11/17
 DRAWN BY: G. A. Wood
 CHECKED BY: G. E. Dunbar
 TITLE: ROAD IMPROVEMENT
 PROJECT NO.: 1000
 SHEET NO.: 16



PROFILE
 DATE: 11/11/17
 DRAWN BY: G. A. Wood
 CHECKED BY: G. E. Dunbar
 TITLE: ROAD IMPROVEMENT
 PROJECT NO.: 1000
 SHEET NO.: 16

GUARD RAIL REQUIRED

ON LEFT

| | |
|--------------------------|---------------|
| Sta. 20+00 to Sta. 20+74 | Length 74 ft. |
| - 21+48 to - 22+52 | - 104- |
| - 25+00 - - 28+00 | - 300- |

ON RIGHT

| | |
|--------------------------|-------|
| Sta. 20+00 to Sta. 20+64 | - 64- |
| - 26+00 - - 28+00 | - 40- |
| - 27+00 - - 27+32 | - 32- |

TOTAL THIS SHEET 516-

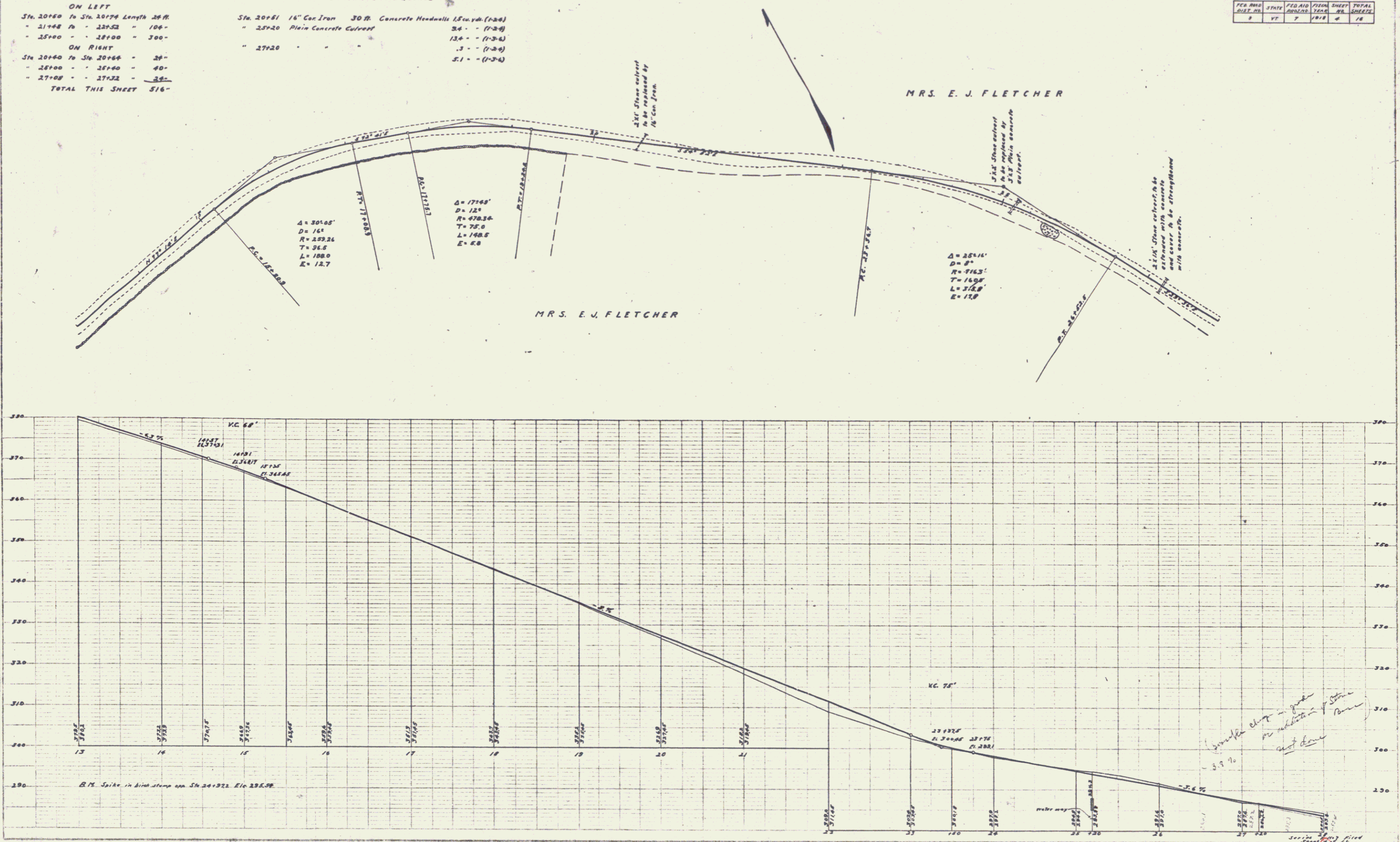
NEW CULVERTS REQUIRED

| | | |
|------------|------------------------|----------------------------------|
| Sta. 20+51 | 16" Cor Iron | 30 ft. Concrete Headwalls (2-24) |
| - 25+20 | Plain Concrete Culvert | 34 - (1-24) |
| - 27+20 | " | 134 - (1-24) |
| - 27+20 | " | 3 - (1-24) |
| - 27+20 | " | 51 - (1-24) |

| PER AREA | STATE | PER AID | PER SHEET | TOTAL | |
|-----------|-------|---------|-----------|-------|----|
| SHEET NO. | | NO. OF | NO. | NO. | |
| 8 | VT | 7 | 1018 | 4 | 76 |

PLANNED BY
NOTED BY
CHECKED BY
DESIGNED BY
DRAWN BY
DATE

SCALE
VERTICAL
HORIZONTAL



MRS. E. J. FLETCHER

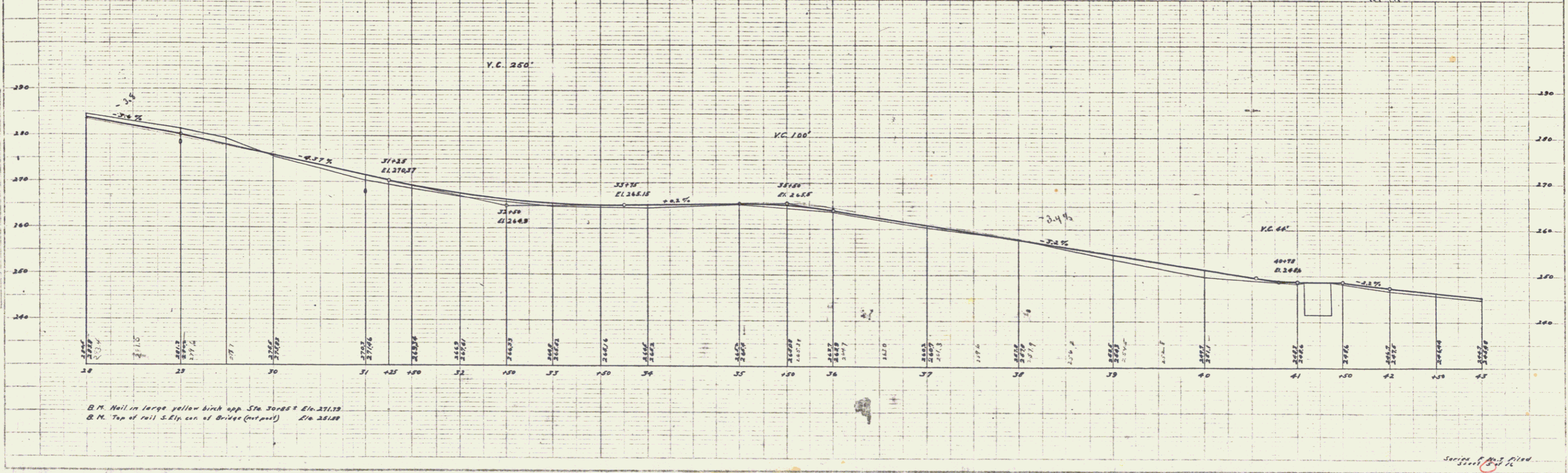
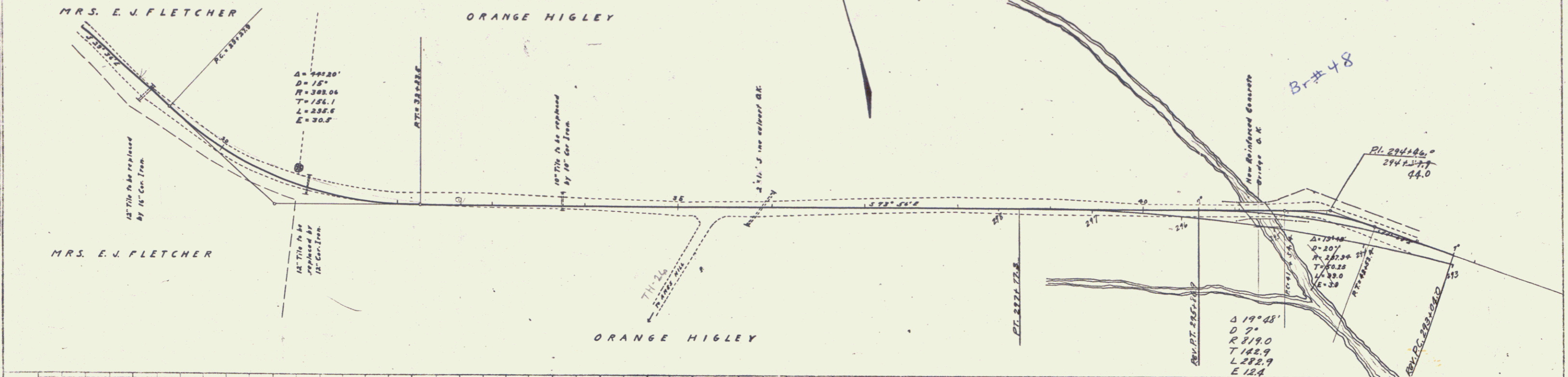
MRS. E. J. FLETCHER

GUARD RAIL REQUIRED
ON LEFT
 Sta. 28+00 to Sta. 34+20 Length 620 ft
ON RIGHT
 * 28+88 to Sta. 29+12 - 24'
 * 30+88 - 31+12 - 24'
 * 33+65 - 33+89 - 24'
TOTAL THIS SHEET 692'

NEW CULVERTS REQUIRED
 Sta. 29+00 16" Cor. Iron 28 ft Concrete Headwalls 15 cu yds. (D-2-0)
 * 31+00 12" - - 22 - - - 1.0 - -
 * 33+77 10" - - 22 - - - 1.0 - -

| FED. ROAD DIST. NO. | STATE | FED. AID PROJ. NO. | LOCAL PROJ. NO. | SHEET NO. | TOTAL SHEETS |
|---------------------|-------|--------------------|-----------------|-----------|--------------|
| 9 | VT | 7 | 1818 | 4 | 16 |

PLAN
 DATE: 10/1/57
 DRAWN BY: G. A. Reed
 CHECKED BY: D. B. Dunham
 TITLE: BRIDGE OVER RAILROAD
 PROJECT: 1818
 SHEET: 4



Series 1 of 16 sheets

GUARD RAIL REQUIRED

ON LEFT
 Sta. 43+70 to Sta. 43+96 Length 26 ft.
 - 45+37 - 45+81 - 26'
 - 47+52 - 47+76 - 26'
 - 53+82 - 53+26 - 26'
 - 57+22 - 57+66 - 26'

ON RIGHT
 Sta. 43+70 to Sta. 43+96 - 26'
 - 45+37 - 45+81 - 26'
 - 47+52 - 47+76 - 26'
 - 49+50 - 51+70 - 226'
 - 53+06 - 57+46 - 240'
TOTAL THIS SHEET 856'

STONE BASE REQUIRED

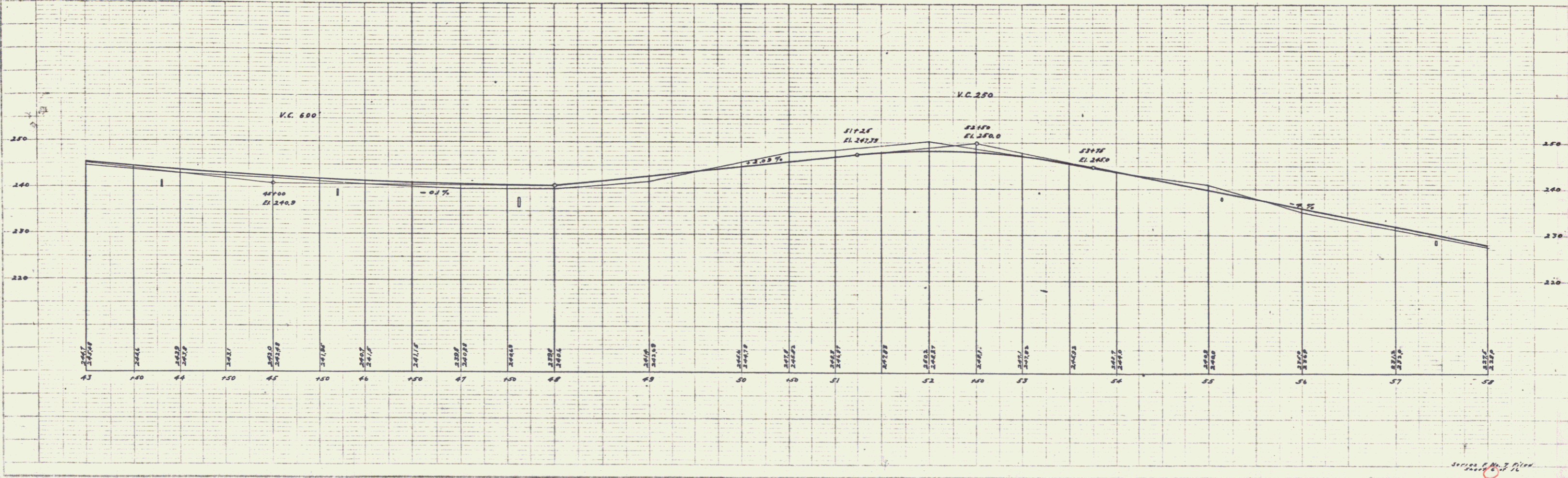
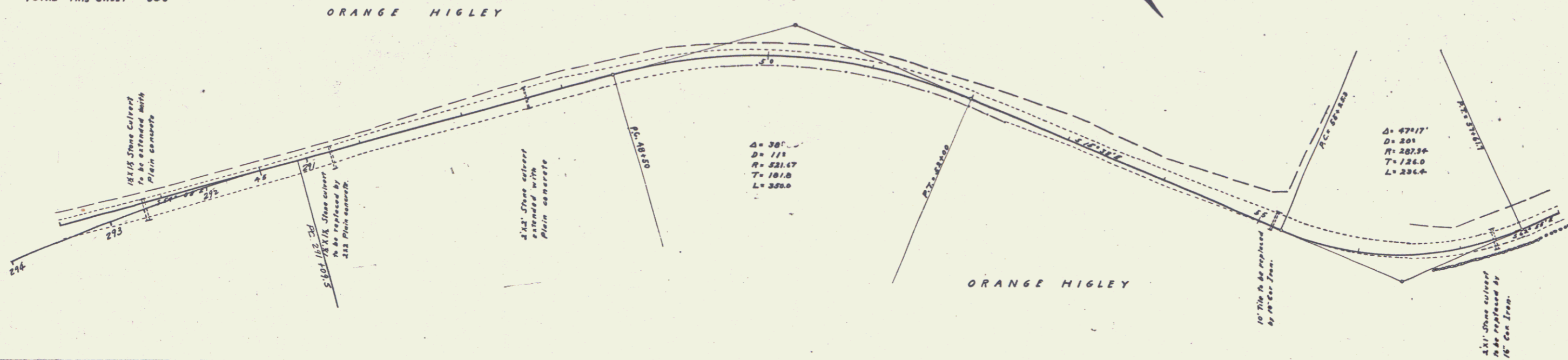
Sta. 43+00 to Sta. 47+00 Length 400 ft.

NEW CULVERTS REQUIRED

Sta. 43+825 Plain Concrete Culvert 1.4 cu. yds. (100%)
 " 45+69 " " " 3.0 " (2-4)
 " 47+69 " " " 4.8 " (2-4)
 " 47+69 " " " 6.3 " (1-3-4)
 " 47+69 " " " 0.8 " (1-3-4)
 " 55+193 10" Con. Iron 32' Concrete Headwalls 2.7 " (1-3-4)
 " 57+365 16" " " 26' " 1.8 " (1-2-4)
 " 57+365 16" " " 26' " 1.5 " (1-2-4)

| PER. ROAD DIST. NO. | STATE | FED. AID PROJ. NO. | FED. AID PROJ. YEAR | SHEET NO. | TOTAL SHEETS |
|---------------------|-------|--------------------|---------------------|-----------|--------------|
| 2 | FL. | 7 | 1964 | 6 | 16 |

PLAT 11/11/64
 G.A. Reed
 G.A.R.
 D.R. Donahue
 4/13/68



PLAT 11/11/64
 G.A. Reed
 G.A.R.
 D.R. Donahue
 4/13/68

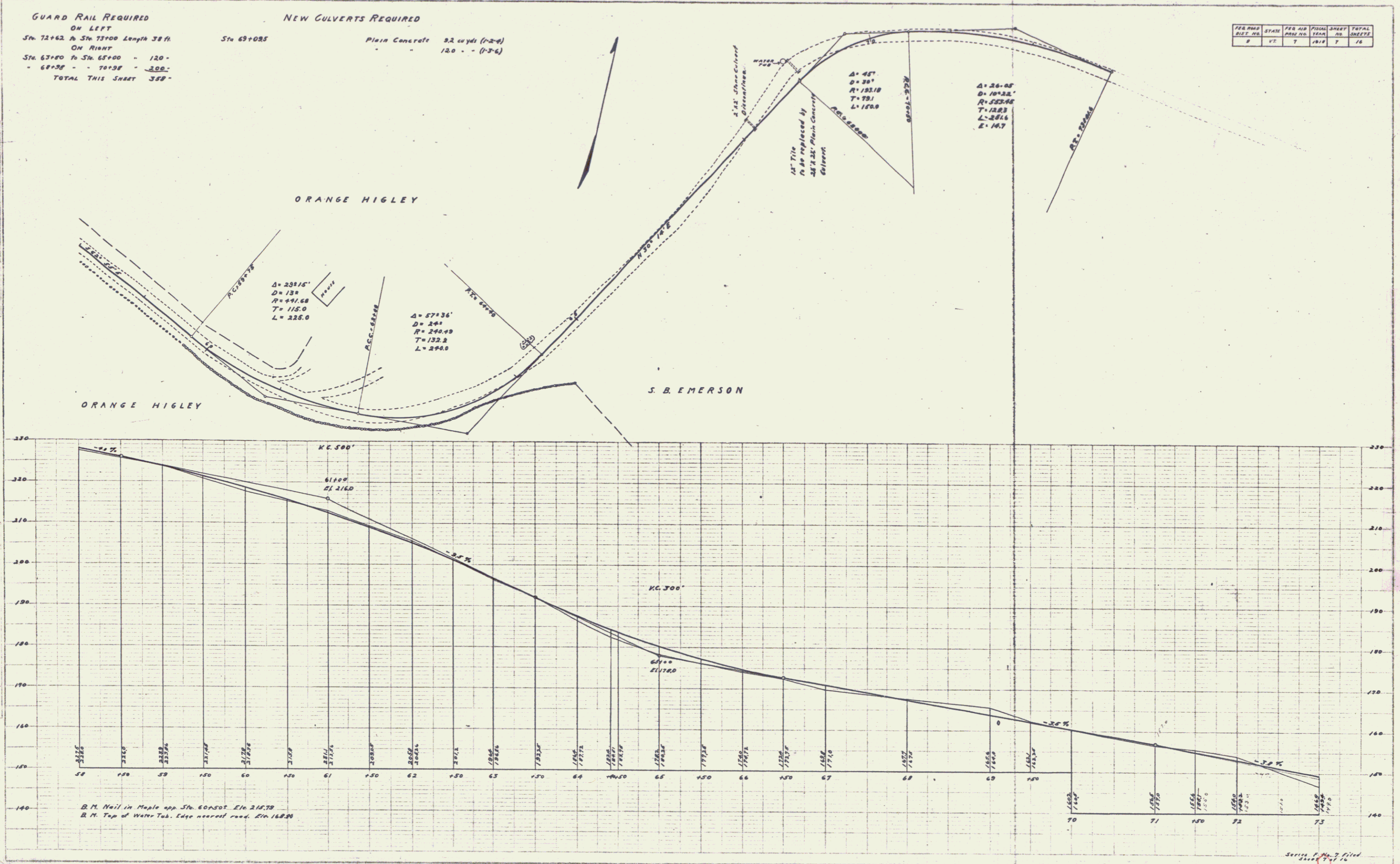
GUARD RAIL REQUIRED
 ON LEFT
 Sta. 72+62 to Sta. 73+00 Length 38 ft.
 ON RIGHT
 Sta. 67+80 to Sta. 68+00 - 120 -
 68+38 - 70+38 - 300 -
 TOTAL THIS SHEET 388 -

NEW CULVERTS REQUIRED
 Sta. 69+085 Plain Concrete 82 cu yds (1-2-4)
 120 - - (1-3-6)

| PER ANS | STATION | PER ANS | PER ANS | PER ANS | TOTAL |
|---------|---------|---------|---------|---------|-------|
| NO. | | NO. | NO. | NO. | NO. |
| 1 | VT | 7 | 1612 | 7 | 1612 |

PLANNED BY
 CHECKED BY
 DESIGNED BY
 DRAWN BY
 DATE

SCALE
 HORIZONTAL
 VERTICAL



R. M. Nail in Maple opp. Sta. 60+50 Elev. 215.75
 R. M. Top of Water Tab. Edge near road. Elev. 168.00

PLANS - PLAN PROFILE D. & L. & R. E. STANDARD
 10' HORIZ. & 1" VERT. = 100' HORIZ.

Series P. No. 7 Filed
 2/17/16

GUARD RAIL REQUIRED ON LEFT

| | |
|--------------------------|---------------|
| Sta. 73+00 to Sta. 74+22 | Length 122 ft |
| - 73+63 - 73+87 | - 24 - |
| - 81+40 - 81+64 | - 24 - |

ON RIGHT

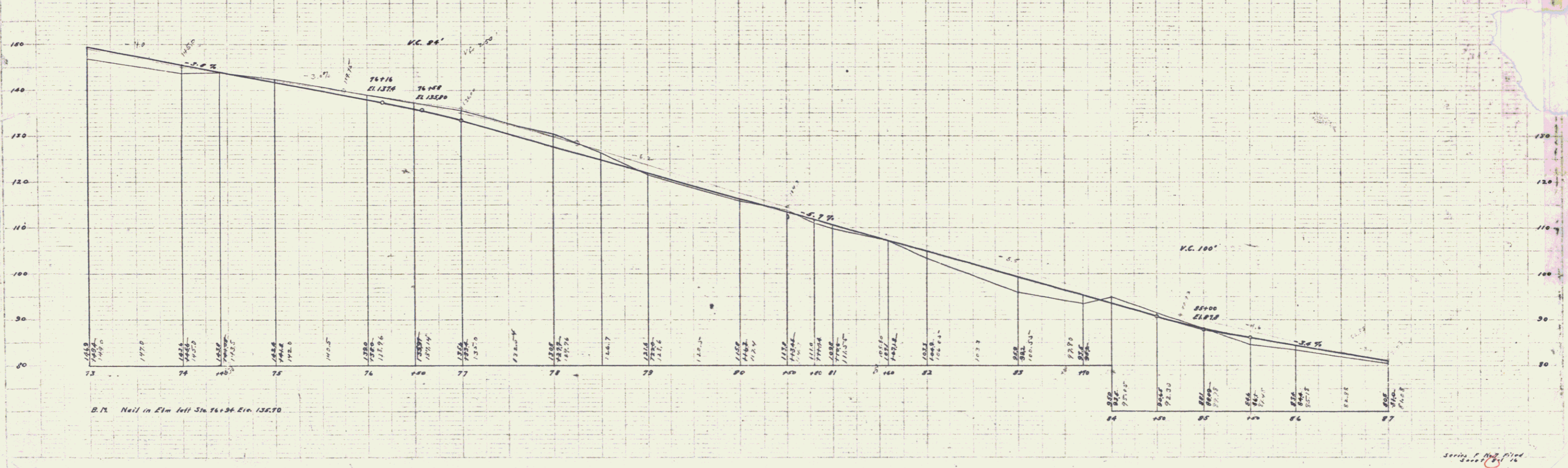
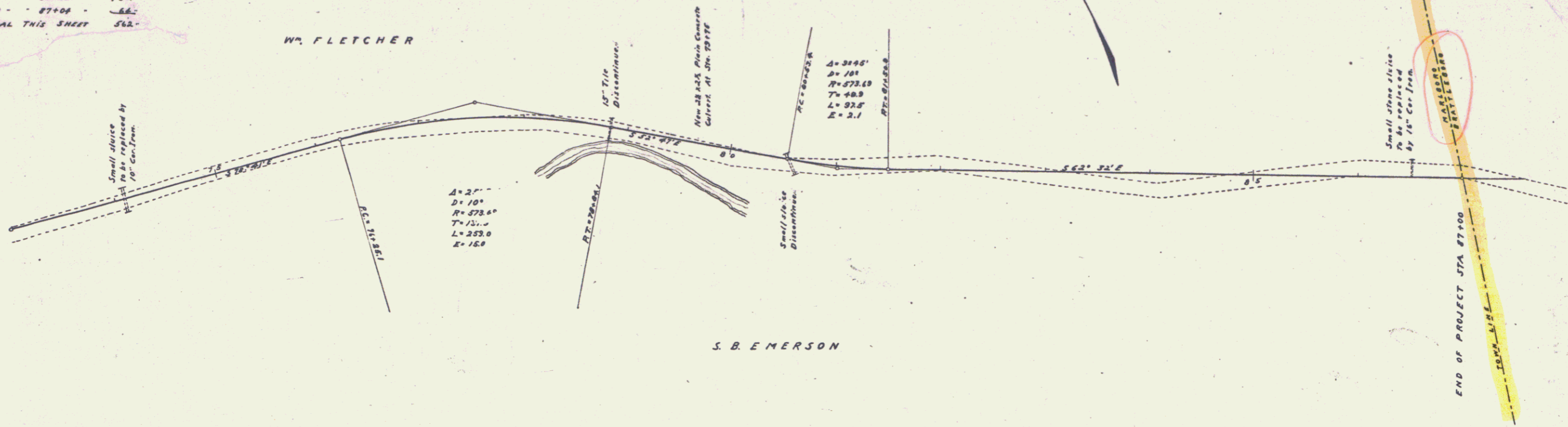
| | |
|--------------------------|---------|
| Sta. 73+50 to Sta. 76+22 | - 72 - |
| - 75+10 - 76+06 | - 96 - |
| - 78+65 - 80+05 | - 140 - |
| - 86+00 - 87+04 | - 64 - |

TOTAL THIS SHEET 562

NEW CULVERTS REQUIRED

| | | | |
|------------|--------------|--------------------------|---------------|
| Sta. 76+05 | 10' Cor Iron | 30 ft Concrete Headwalls | 1 each (D-24) |
| - 79+75 | | Plain Concrete Culverts | 52 - - - |
| - 81+25 | 16' - - | Headwalls | 15 - - (D-24) |

| FED ROAD DIST NO | STATE | FED AID PERCENT | SHEET NO | TOTAL SHEETS |
|------------------|-------|-----------------|----------|--------------|
| 7 | VT | 7 | 1814 | 8 |



Series 7, No. 11, 12, 13, 14, 15, 16, 17, 18