

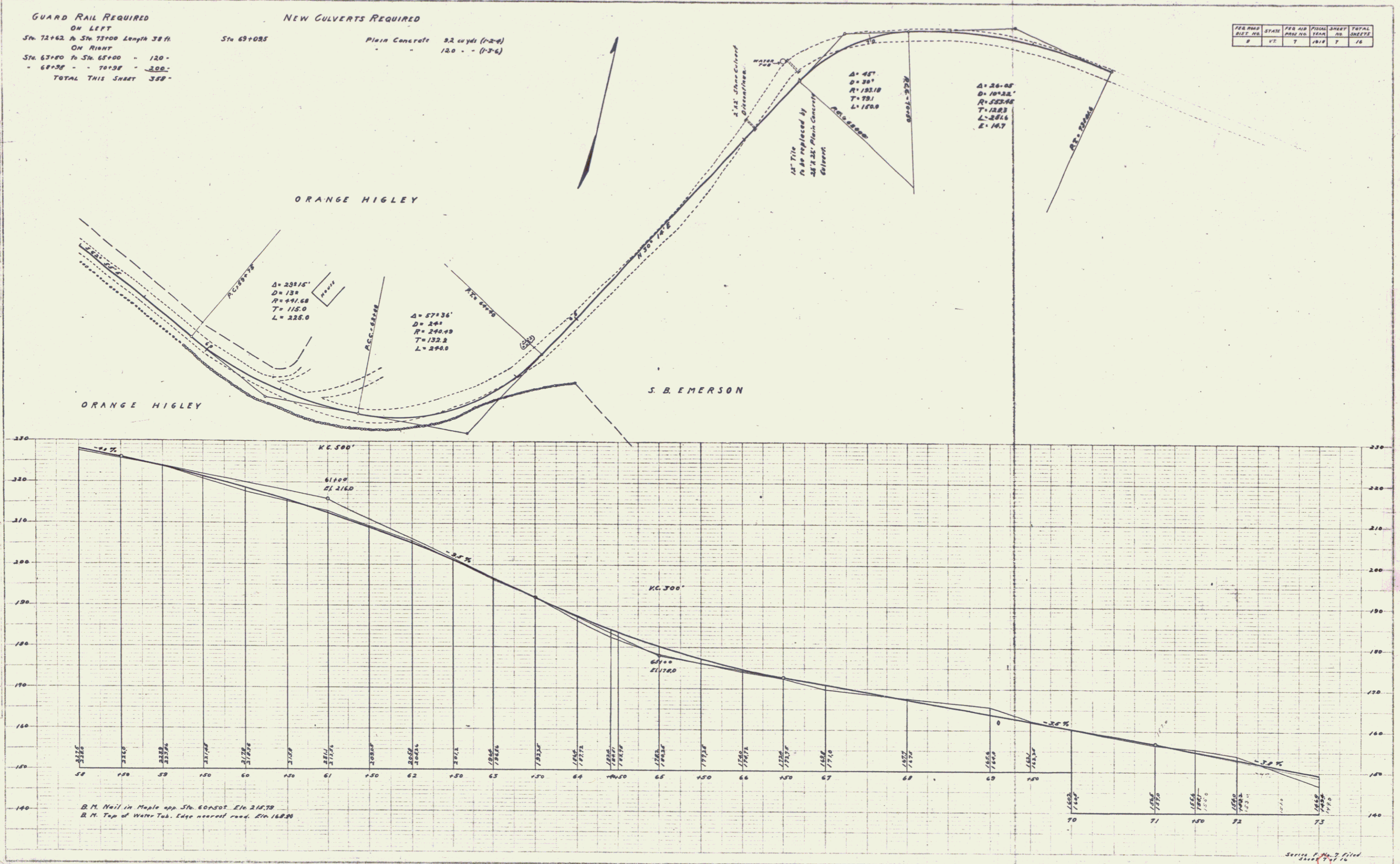
GUARD RAIL REQUIRED
 ON LEFT
 Sta. 72+62 to Sta. 73+00 Length 38 ft.
 ON RIGHT
 Sta. 67+80 to Sta. 68+00 - 120 -
 68+38 - 70+38 - 300 -
 TOTAL THIS SHEET 388 -

NEW CULVERTS REQUIRED
 Sta. 69+085 Plain Concrete 82 cu yds (1-2-4)
 120 - (1-3-6)

PER ANS	STATION	PER ANS	PER ANS	TOTAL
DIS. NO.		NO.	NO.	NO.
P	V	T	T	T

PLANS
 DRAWN BY
 CHECKED BY
 DATE
 SCALE
 SHEET NO.
 TOTAL SHEETS

PROFILES
 DRAWN BY
 CHECKED BY
 DATE
 SCALE
 SHEET NO.
 TOTAL SHEETS



R. M. Nail in Maple opp. Sta. 60+50 Elev. 215.75
 R. M. Top of Water Tab. Edge near road. Elev. 168.00

PLANS - PLAN PROFILE D. & L. & R. E. STANDARD
 1/4\"/>

Series P. No. 7 Filed
 2/17/16

6