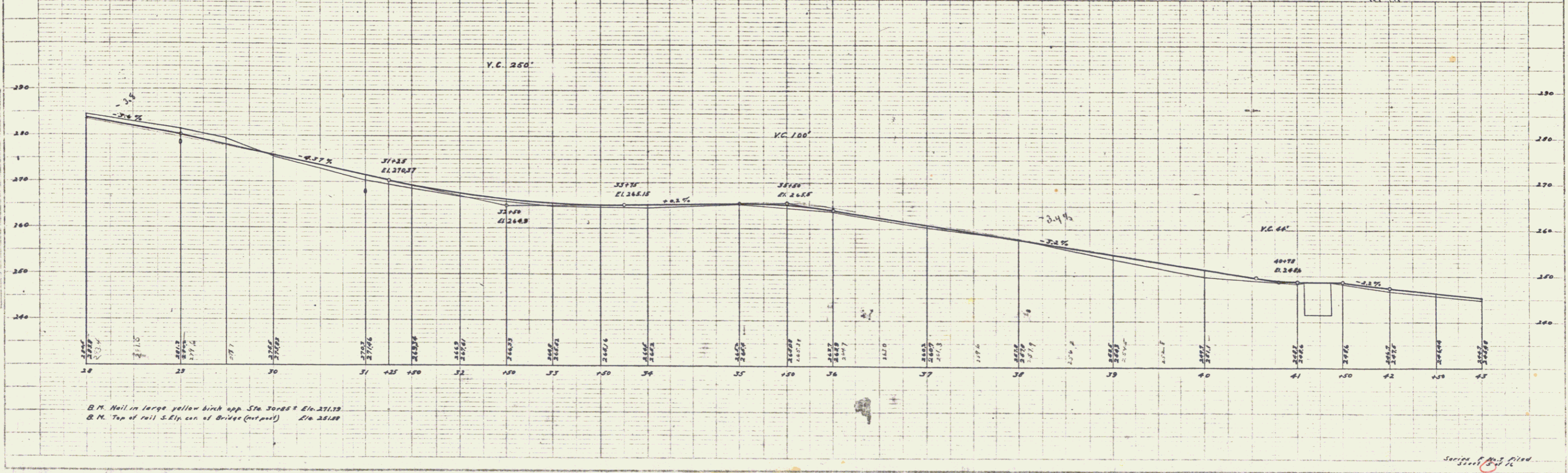
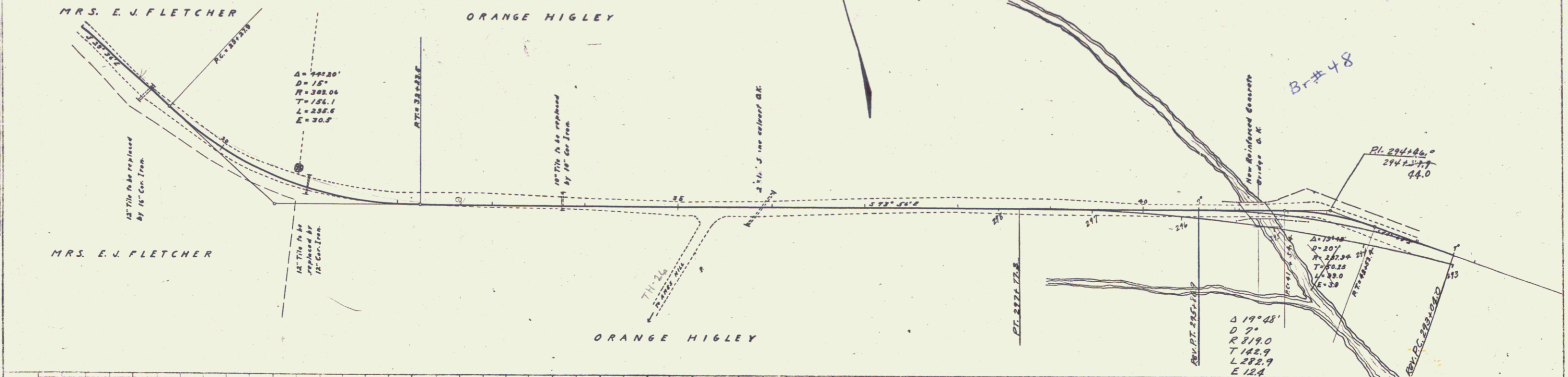


GUARD RAIL REQUIRED
ON LEFT
 Sta. 28+00 to Sta. 34+20 Length 620 ft
ON RIGHT
 * 28+88 to Sta. 29+12 - 24'
 * 30+88 - 31+12 - 24'
 * 33+65 - 33+89 - 24'
TOTAL THIS SHEET 692'

NEW CULVERTS REQUIRED
 Sta. 29+00 16" Cor. Iron 28 ft Concrete Headwalls 15 cu yds. (D-2-0)
 * 31+00 12" - - 22 - - - 1.0 - -
 * 33+77 10" - - 22 - - - 1.0 - -

FED. ROAD DIST. NO.	STATE	FED. AID PROJ. NO.	LOCAL PROJ. NO.	SHEET NO.	TOTAL SHEETS
9	VT	7	1818	4	16

PLAN
 DATE: 10/1/57
 DRAWN BY: G. A. Reed
 CHECKED BY: D. B. Dunham
 TITLE: BRIDGE OVER RAILROAD
 PROJECT: 1818
 SHEET: 4



Series 1 of 16 sheets