

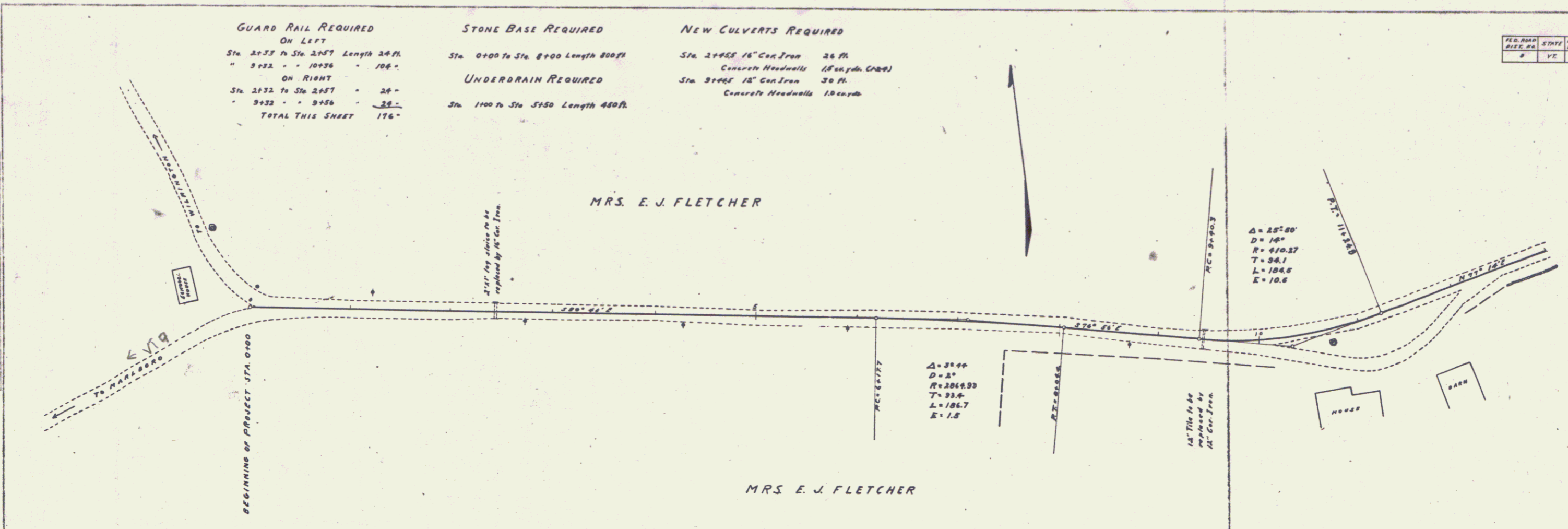
**GUARD RAIL REQUIRED**  
 ON LEFT  
 Sta. 2+33 To Sta. 2+57 Length 24 ft.  
 " 3+32 " " 10+36 " 70 ft.  
 ON RIGHT  
 Sta. 2+32 To Sta. 2+57 " 25"  
 " 3+32 " " 9+56 " 24"  
**TOTAL THIS SHEET 176'**

**STONE BASE REQUIRED**  
 Sta. 0+00 To Sta. 8+00 Length 800 ft.  
**UNDERDRAIN REQUIRED**  
 Sta. 1+00 To Sta. 5+50 Length 450 ft.

**NEW CULVERTS REQUIRED**  
 Sta. 2+955 16" Con. Iron 26 ft.  
 Concrete Headwalls 18" x 18" x 48"  
 Sta. 3+965 18" Con. Iron 30 ft.  
 Concrete Headwalls 18" x 18" x 48"

FED. ROAD DIST. NO.	STATE	FED. AID PROJ. NO.	FISCAL YEAR	TOTAL LENGTH	SHEET NO.
2	VT	2	1918	3	16

PLAN  
 DATE  
 DRAWN BY  
 CHECKED BY  
 TITLE  
 PROJECT NO.  
 SHEET NO.



PROFILE  
 DATE  
 DRAWN BY  
 CHECKED BY  
 TITLE  
 PROJECT NO.  
 SHEET NO.

