

WOOD GUARD RAIL REQUIRED

Station	Left	Right
405+20	24	-
407+50	-	24
407+55	-	24

WOOD GUIDE POSTS REQUIRED

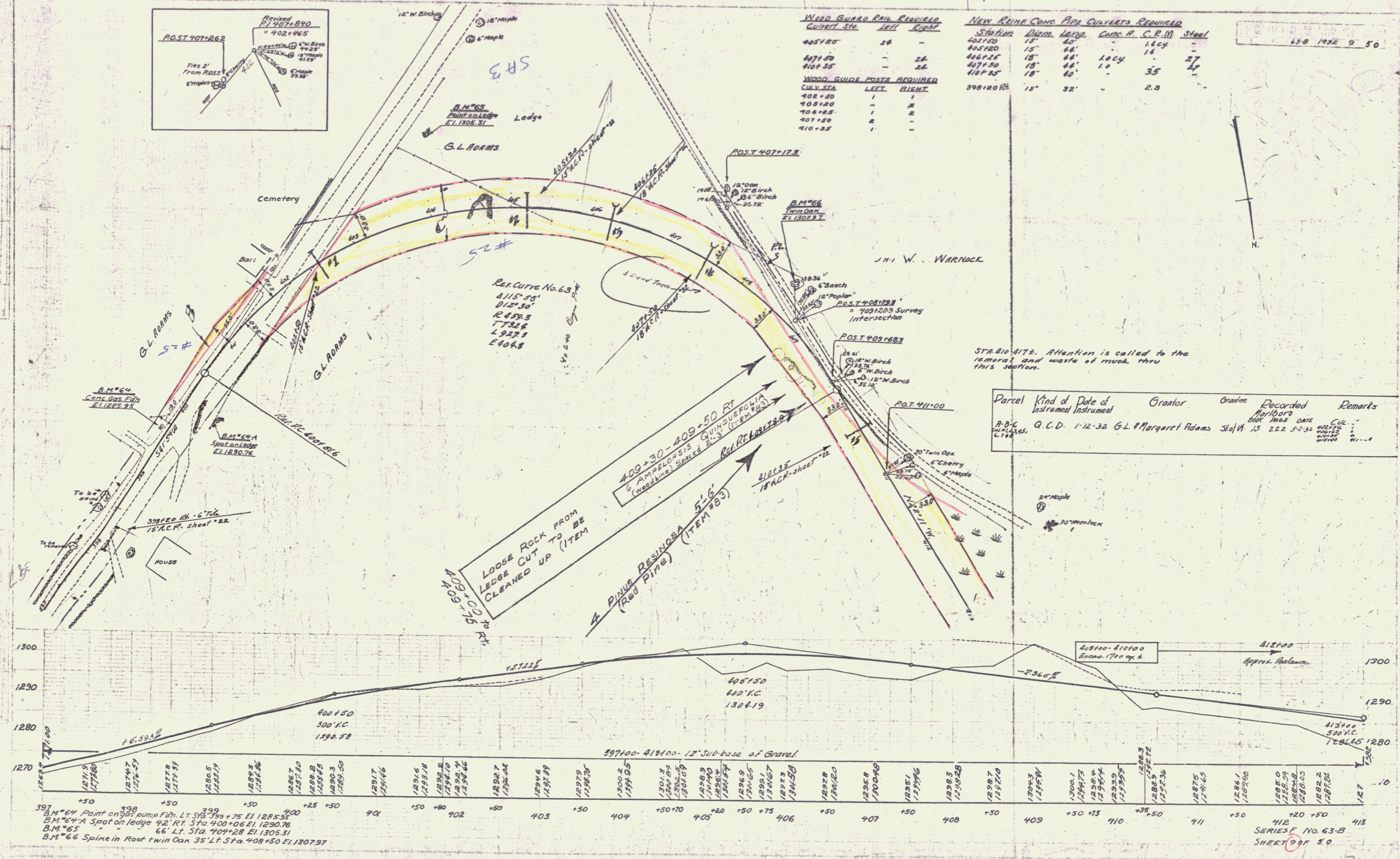
Station	Left	Right
408+50	1	1
408+20	-	2
408+25	1	2
407+50	2	-
410+35	1	-

NEW REIN CONC PIPE CULVERTS REQUIRED

Station	Digal Leng	Cover	C.P.M	Steel
405+20	15'	40"	-	14.4
405+20	15'	44"	-	14
405+25	18'	44"	10 CY	27
407+55	18'	44"	-	35
410+35	18'	40"	-	27

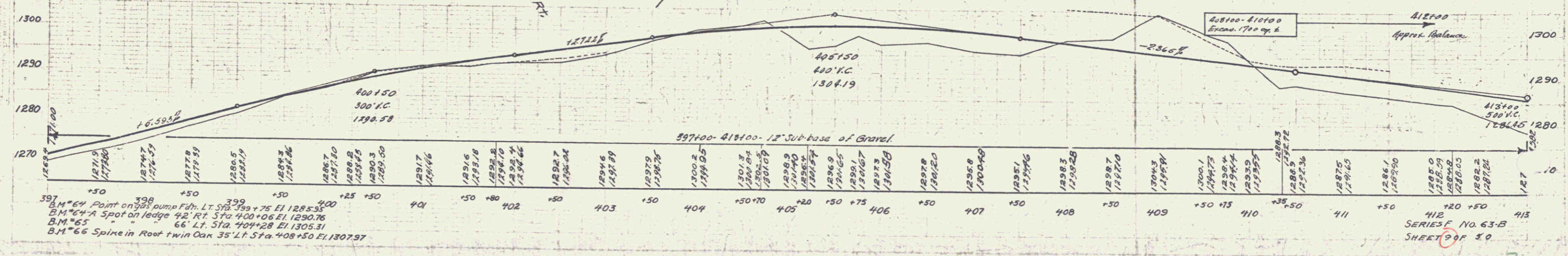
398+20 Rt 15' 32' - 2.3

63-B 1932 D 50



STABILITY. Attention is called to the removal and waste of rock thru this section.

Parcel	Kind of Instrument	Date of Instrument	Grantor	Grantee	Recorded	Remarks
409+30-409+50	Q.C.D.	1-12-32	G.L. & Margaret Adams	State	13 222 5-2-32	...



397 B.M. 64 Point on gas pump Fdn. LT Sta. 399+75 El. 1285.55
 398 B.M. 64 Spot on ledge 42' Rt. Sta. 400+06 El. 1290.76
 399 B.M. 65 66' Lt. Sta. 404+28 El. 1305.31
 400 B.M. 66 Spike in Root twin Oak 35' Lt. Sta. 408+50 El. 1307.97

412 SERIES F NO. 63-B SHEET 9 OF 30