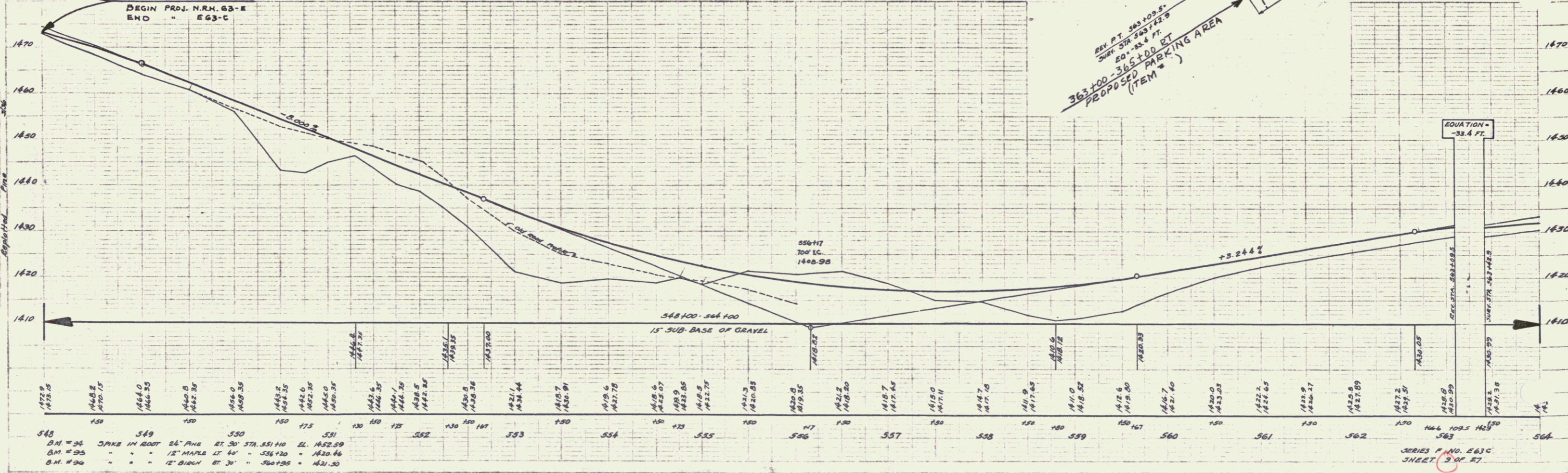
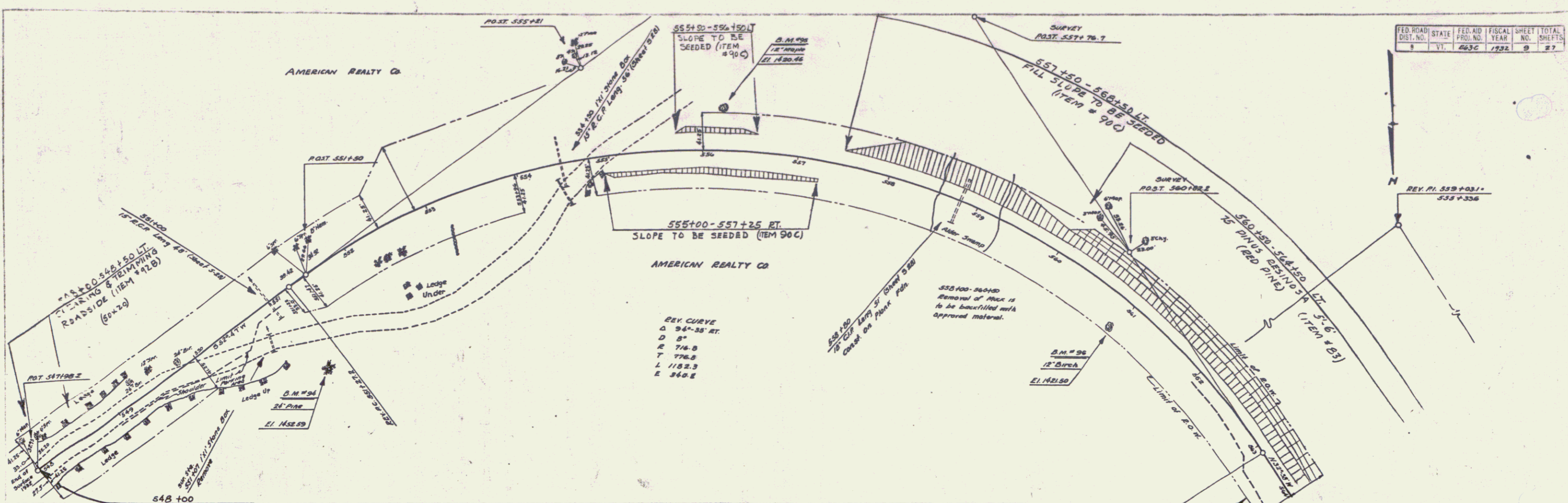


FED. ROAD DIST. NO.	STATE	FED. AID PROJ. NO.	FISCAL YEAR	SHEET NO.	TOTAL SHEETS
8	VT.	463C	1932	9	27



548	B.M. # 36	SPIKE IN ROOF	24' PINE	BT. 50'	ST. 551+10	EL. 1452.89
	B.M. # 35	"	"	"	556+30	" 1420.46
	B.M. # 30	"	"	"	560+95	" 1421.30

SERIES F NO. 563C
SHEET 9 OF 27