

INDEX OF SHEETS

SHEET NO.	TITLE PAGE
1	TITLE PAGE
2	TYPICAL CROSS-SECTION OF IMPROVEMENT & SUMMARY OF QUANTITIES
3-6	LAYOUT SHEETS

FED. ROAD DIST. NO.	STATE	FED. AID PROJ. NO.	FISCAL YEAR	SHEET NO.	TOTAL SHEETS
9	Vt.	105-D	1936	1	6

(LANDSCAPE)

STATE OF VERMONT  
STATE HIGHWAY DEPARTMENT

PLAN AND PROFILE OF PROPOSED  
STATE HIGHWAY

FEDERAL AID PROJECT

ROADSIDE IMPROVEMENT  
PLANTING PLANS

TOWNS OF WOODFORD & SEARSBURG

BENNINGTON-BRATTLEBORO ROAD

ROUTE VT 9

FROM STA. 465 + 00 OF STATE PROJECT 105-M, EASTERLY TO  
STA. 733 + 00 OF STATE PROJECT 105-M, EXCLUDING FROM STA.  
503 + 00-540 + 00, STA. 611 + 00-650 + 00 & STA. 656 + 00-  
701 + 00.

LENGTH OF PROJECT 14,696.9 FT. = 2.783 MILES

SCALES

TYPICAL SECTIONS: AS INDICATED  
LAYOUTS 1" = 50'

NOTE  
These plans are subject to such revisions as may be required by the Bureau of Public Roads or the Commissioner of Highways. Construction is to be carried on in accordance with the plans and Standard Road and Bridge Specifications of 1930, including all subsequent approved revisions and such revised specifications and special provisions as are submitted with the plans.

PROPOSED PLANTING

TREES

PINUS RESINOSA 5'-6"  
(Red Pine)



CUT

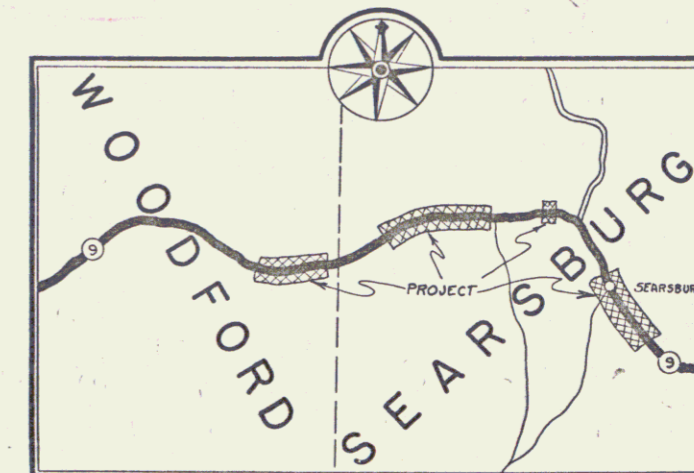


FILL

EXISTING GROWTH



Pin # 99R828



SCALE: 1 INCH = 1 MILE

APPROVED: April 6, 1936

*H. Wagner*

COMMISSIONER OF HIGHWAYS

SUBMITTED BY ORDER OF THE STATE HIGHWAY BOARD

Project No. F 105-D LANDSCAPING

RECOMMENDED [Signature]  
DISTRICT ENGINEER BUREAU OF PUBLIC ROADS

RECOMMENDED FOR APPROVAL [Signature]  
CHIEF ENGINEER BUREAU OF PUBLIC ROADS

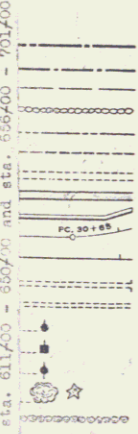
APPROVED [Signature]  
DIRECTOR BUREAU OF PUBLIC ROADS

SERIES F No. 105-D FILED  
SHEET 1 OF 6

DIST. # 1 PLANS

PROJECT NO.	F.A. 105-D
NUMBER	2,783 MI.
TYPE	LANDSCAPING
CONTRACTOR	
DATE	1936

CONVENTIONAL SIGNS



GROUND ELEVATION DATUM LINE

GRADE ELEVATION DATUM LINE

CURVE DATA

DEFLECTION ANGLE..... Δ  
DEGREE OF CURVE..... D  
RADIUS OF CURVE..... R  
TANGENT DISTANCE..... T  
LENGTH OF CURVE..... L  
EXTERNAL DISTANCE..... E  
POINT OF INTERSECTION..... P. I.  
POINT OF CURVE..... P. C.  
POINT OF TANGENT..... P. T.  
POINT ON TANGENT..... P. O. T.

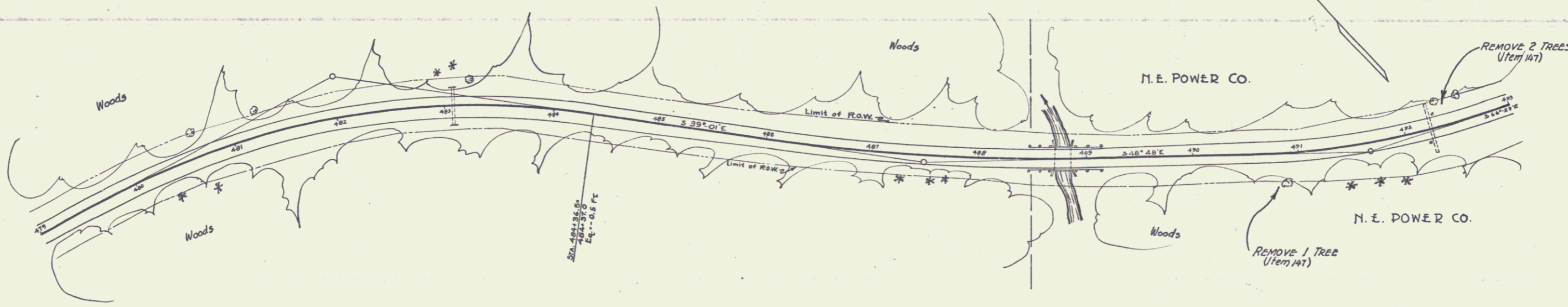
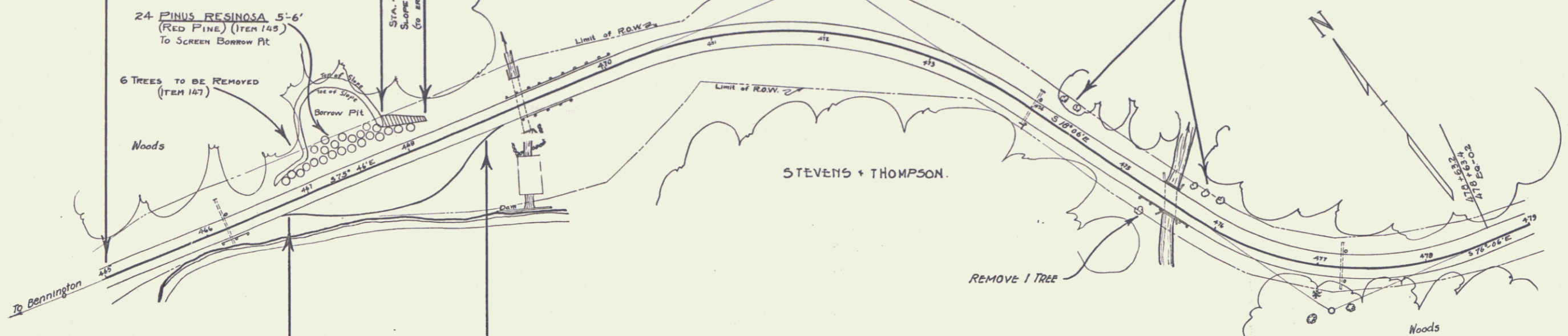
STATE	FISCAL YEAR	SHEET NO.	TOTAL SHEETS
VT	1936	3	6

(LANDSCAPING)

TRACED BY CONE 2-29-36

STA. 464+147 END OF PROJECT  
F.A.P. 105-H (LANDSCAPING)

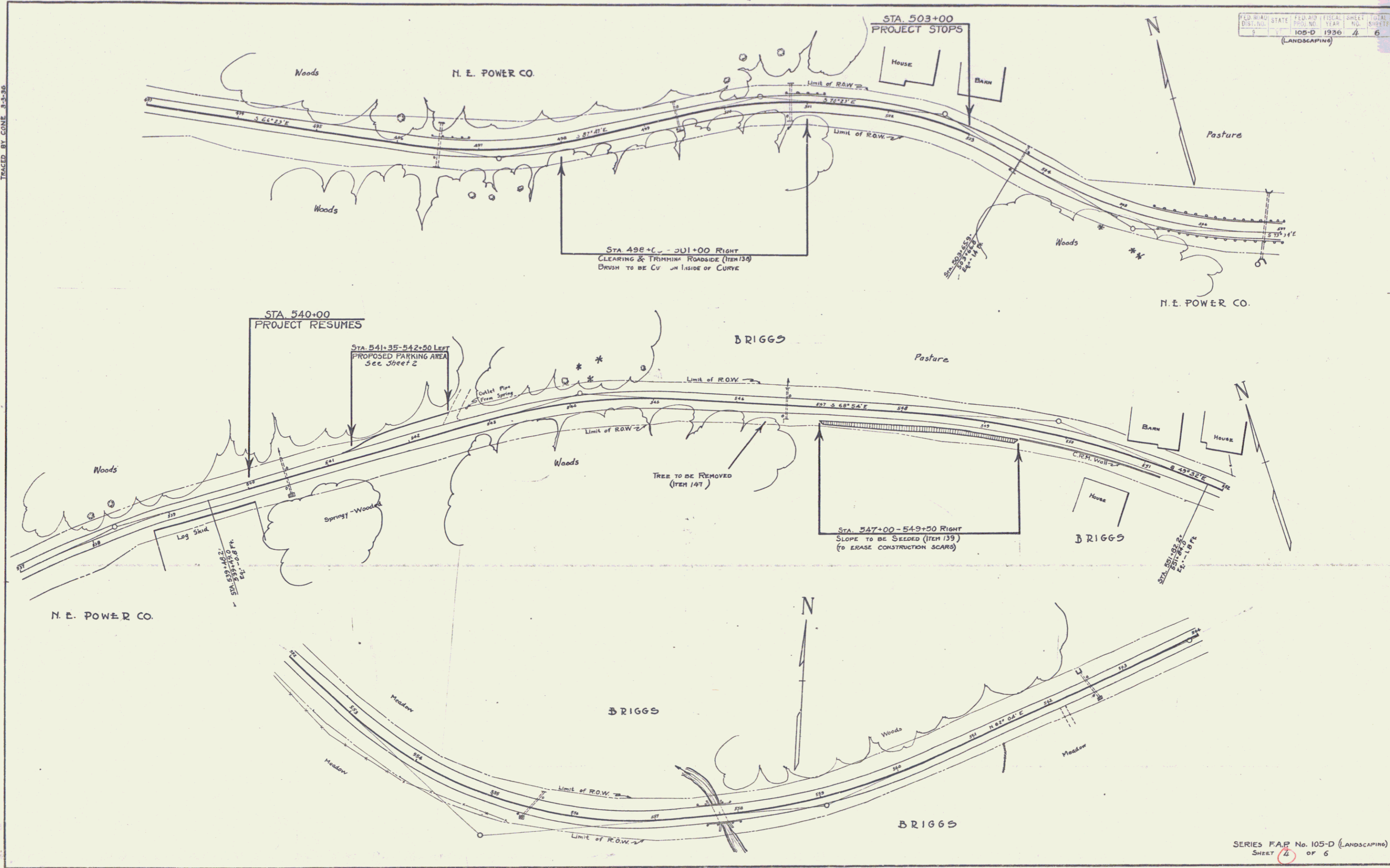
STA. 465+00 BEGINNING OF PROJECT  
F.A.P. 105-D (LANDSCAPING)

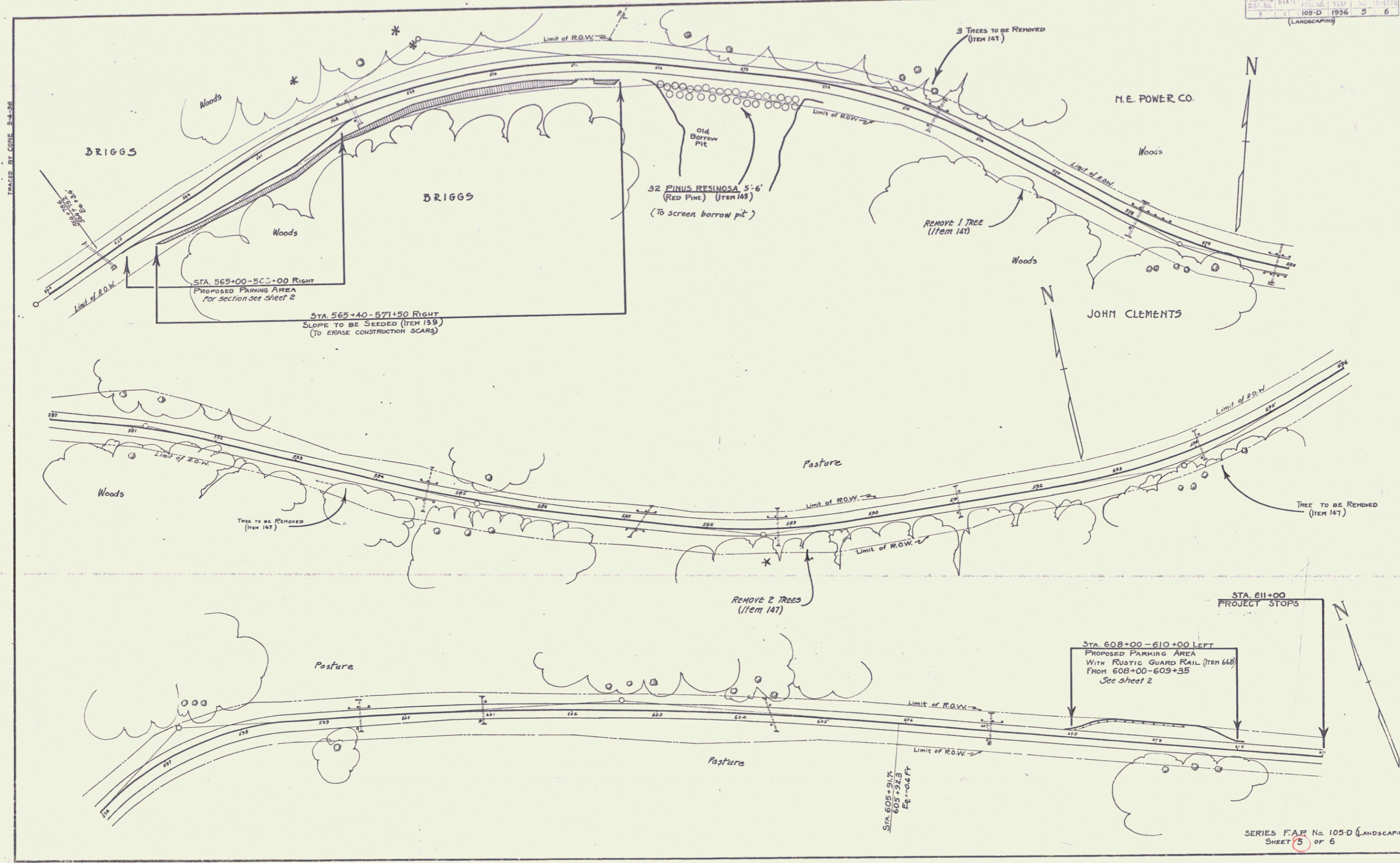


TRACED BY CONE 8-23-36

FED. ROAD DIST. NO.	STATE	FED. AID FISCAL YEAR	SHEET NO.	TOTAL SHEETS
105-D	1936	4	6	

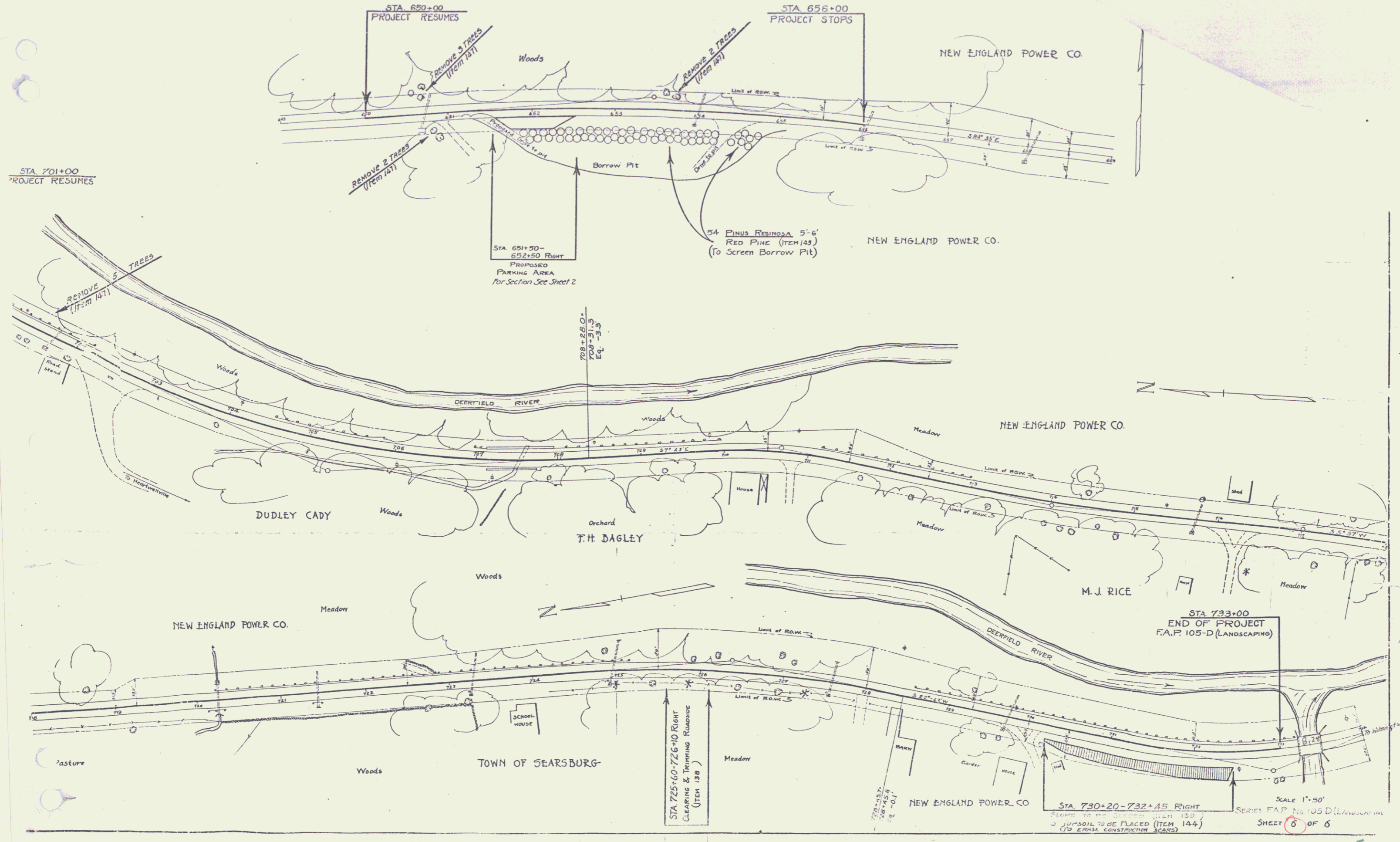
(LANDSCAPING)





TRAFFIC BY CONE 3-4-56

4



STA 701+00  
PROJECT RESUMES

STA 650+00  
PROJECT RESUMES

STA 656+00  
PROJECT STOPS

STA 651+50 -  
652+50 RIGHT  
PROPOSED  
PARKING AREA  
For Section See Sheet 2

54 PINUS RESINOSA 5'-6'  
RED PINE (ITEM 145)  
(To Screen Borrow Pit)

REMOVE 5 TREES  
(ITEM 141)

REMOVE 3 TREES  
(ITEM 141)

REMOVE 2 TREES  
(ITEM 141)

STA 733+00  
END OF PROJECT  
F.A.P. 105-D (LANDSCAPING)

STA 725+60-726+10 RIGHT  
CLEARING & TRIMMING ROADSIDE  
(ITEM 138)

STA 730+20-732+45 RIGHT  
REMOVE 2 TREES (ITEM 143)  
RESPONSIBLE TO BE PLACED (ITEM 144)  
(TO EXPOSE CONSTRUCTION SIGNS)

SCALE 1"=50'  
SERIES F.A.P. No 105-D (LANDSCAPING)  
SHEET 6 OF 6

5