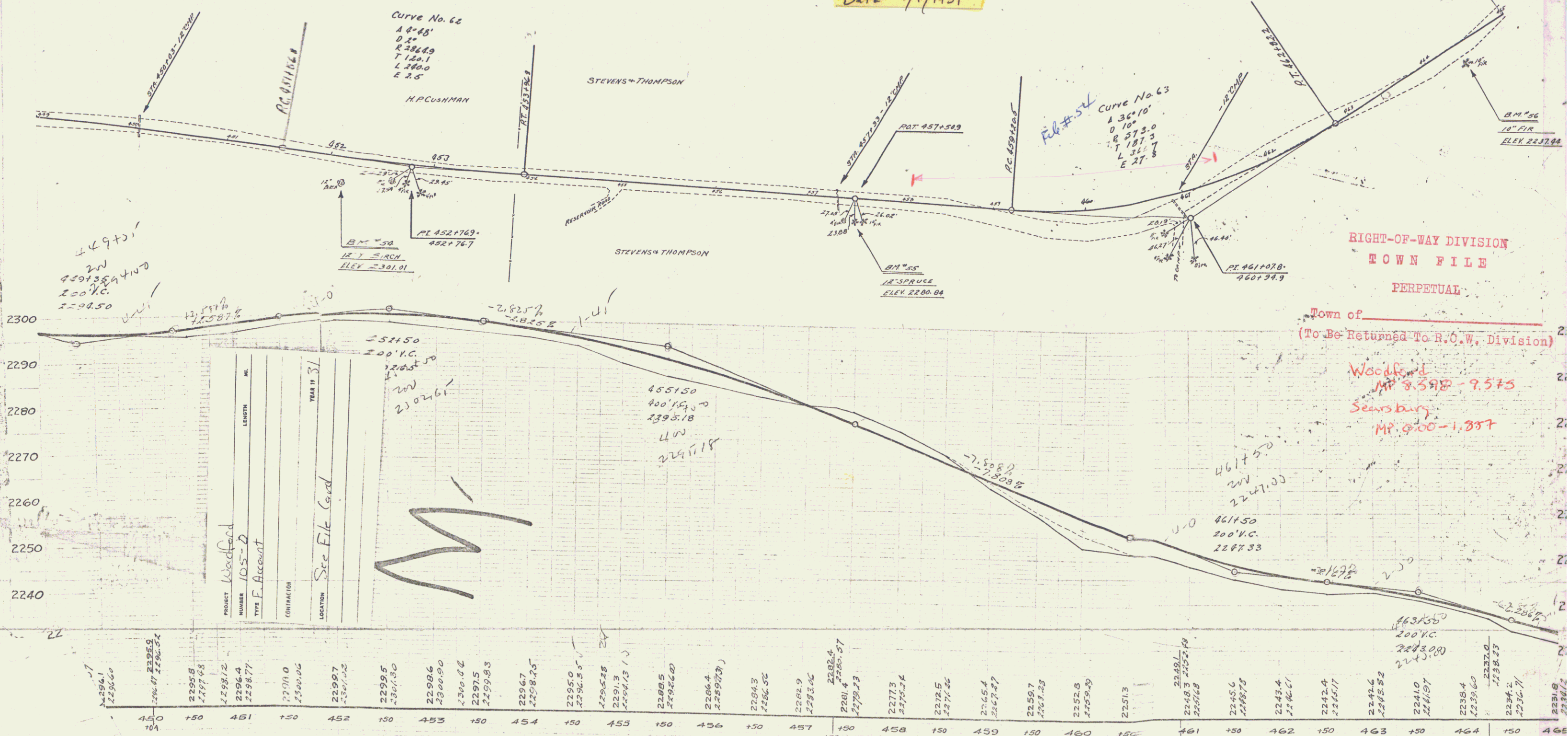


TOWNS OF
 WOODFORD-SEARSBURG
 Project F 105-D
 Pin # 998825
 Route VTA
 Date 1/1/1931

GENERAL STATE PUBLIC WORKS
 DIVISION
 1931



2300
2290
2280
2270
2260
2250
2240

PROJECT	NUMBER	TYPE	CONTRACTOR	LOCATION	YEAR
Woodford	105-D	F. Account			31

M

STATION	ELEVATION	STATION	ELEVATION	STATION	ELEVATION	STATION	ELEVATION	STATION	ELEVATION
450	2296.1	451	2295.8	452	2295.5	453	2295.2	454	2294.9
455	2294.6	456	2294.3	457	2294.0	458	2293.7	459	2293.4
460	2293.1	461	2292.8	462	2292.5	463	2292.2	464	2291.9
465	2291.6	466	2291.3	467	2291.0	468	2290.7	469	2290.4
470	2290.1	471	2289.8	472	2289.5	473	2289.2	474	2288.9
475	2288.4	476	2288.1	477	2287.8	478	2287.5	479	2287.2
480	2286.7	481	2286.4	482	2286.1	483	2285.8	484	2285.5
485	2284.8	486	2284.5	487	2284.2	488	2283.9	489	2283.6
490	2282.7	491	2282.4	492	2282.1	493	2281.8	494	2281.5
495	2280.4	496	2280.1	497	2279.8	498	2279.5	499	2279.2
500	2277.9	501	2277.6	502	2277.3	503	2277.0	504	2276.7
505	2275.4	506	2275.1	507	2274.8	508	2274.5	509	2274.2
510	2272.7	511	2272.4	512	2272.1	513	2271.8	514	2271.5
515	2270.0	516	2269.7	517	2269.4	518	2269.1	519	2268.8
520	2267.1	521	2266.8	522	2266.5	523	2266.2	524	2265.9
525	2264.0	526	2263.7	527	2263.4	528	2263.1	529	2262.8
530	2260.7	531	2260.4	532	2260.1	533	2259.8	534	2259.5
535	2258.2	536	2257.9	537	2257.6	538	2257.3	539	2257.0
540	2255.1	541	2254.8	542	2254.5	543	2254.2	544	2253.9
545	2252.0	546	2251.7	547	2251.4	548	2251.1	549	2250.8
550	2248.7	551	2248.4	552	2248.1	553	2247.8	554	2247.5
555	2246.2	556	2245.9	557	2245.6	558	2245.3	559	2245.0
560	2243.1	561	2242.8	562	2242.5	563	2242.2	564	2241.9
565	2240.0	566	2239.7	567	2239.4	568	2239.1	569	2238.8
570	2237.7	571	2237.4	572	2237.1	573	2236.8	574	2236.5
575	2235.4	576	2235.1	577	2234.8	578	2234.5	579	2234.2
580	2233.1	581	2232.8	582	2232.5	583	2232.2	584	2231.9
585	2230.0	586	2229.7	587	2229.4	588	2229.1	589	2228.8
590	2227.7	591	2227.4	592	2227.1	593	2226.8	594	2226.5
595	2225.4	596	2225.1	597	2224.8	598	2224.5	599	2224.2
600	2223.1	601	2222.8	602	2222.5	603	2222.2	604	2221.9
605	2220.0	606	2219.7	607	2219.4	608	2219.1	609	2218.8
610	2217.7	611	2217.4	612	2217.1	613	2216.8	614	2216.5
615	2215.4	616	2215.1	617	2214.8	618	2214.5	619	2214.2
620	2213.1	621	2212.8	622	2212.5	623	2212.2	624	2211.9
625	2210.0	626	2209.7	627	2209.4	628	2209.1	629	2208.8
630	2207.7	631	2207.4	632	2207.1	633	2206.8	634	2206.5
635	2205.4	636	2205.1	637	2204.8	638	2204.5	639	2204.2
640	2203.1	641	2202.8	642	2202.5	643	2202.2	644	2201.9
645	2200.0	646	2199.7	647	2199.4	648	2199.1	649	2198.8
650	2197.7	651	2197.4	652	2197.1	653	2196.8	654	2196.5
655	2195.4	656	2195.1	657	2194.8	658	2194.5	659	2194.2
660	2193.1	661	2192.8	662	2192.5	663	2192.2	664	2191.9
665	2190.0	666	2189.7	667	2189.4	668	2189.1	669	2188.8
670	2187.7	671	2187.4	672	2187.1	673	2186.8	674	2186.5
675	2185.4	676	2185.1	677	2184.8	678	2184.5	679	2184.2
680	2183.1	681	2182.8	682	2182.5	683	2182.2	684	2181.9
685	2180.0	686	2179.7	687	2179.4	688	2179.1	689	2178.8
690	2177.7	691	2177.4	692	2177.1	693	2176.8	694	2176.5
695	2175.4	696	2175.1	697	2174.8	698	2174.5	699	2174.2
700	2173.1	701	2172.8	702	2172.5	703	2172.2	704	2171.9
705	2170.0	706	2169.7	707	2169.4	708	2169.1	709	2168.8
710	2167.7	711	2167.4	712	2167.1	713	2166.8	714	2166.5
715	2165.4	716	2165.1	717	2164.8	718	2164.5	719	2164.2
720	2163.1	721	2162.8	722	2162.5	723	2162.2	724	2161.9
725	2160.0	726	2159.7	727	2159.4	728	2159.1	729	2158.8
730	2157.7	731	2157.4	732	2157.1	733	2156.8	734	2156.5
735	2155.4	736	2155.1	737	2154.8	738	2154.5	739	2154.2
740	2153.1	741	2152.8	742	2152.5	743	2152.2	744	2151.9
745	2150.0	746	2149.7	747	2149.4	748	2149.1	749	2148.8
750	2147.7	751	2147.4	752	2147.1	753	2146.8	754	2146.5
755	2145.4	756	2145.1	757	2144.8	758	2144.5	759	2144.2
760	2143.1	761	2142.8	762	2142.5	763	2142.2	764	2141.9
765	2140.0	766	2139.7	767	2139.4	768	2139.1	769	2138.8
770	2137.7	771	2137.4	772	2137.1	773	2136.8	774	2136.5
775	2135.4	776	2135.1	777	2134.8	778	2134.5	779	2134.2
780	2133.1	781	2132.8	782	2132.5	783	2132.2	784	2131.9
785	2130.0	786	2129.7	787	2129.4	788	2129.1	789	2128.8
790	2127.7	791	2127.4	792	2127.1	793	2126.8	794	2126.5
795	2125.4	796	2125.1	797	2124.8	798	2124.5	799	2124.2
800	2123.1	801	2122.8	802	2122.5	803	2122.2	804	2121.9
805	2120.0	806	2119.7	807	2119.4	808	2119.1	809	2118.8
810	2117.7	811	2117.4	812	2117.1	813	2116.8	814	2116.5
815	2115.4	816	2115.1	817	2114.8	818	2114.5	819	2114.2
820	2113.1	821	2112.8	822	2112.5	823	2112.2	824	2111.9
825	2110.0	826	2109.7	827	2109.4	828	2109.1	829	2108.8
830	2107.7	831	2107.4	832	2107.1	833	2106.8	834	2106.5
835	2105.4	836	2105.1	837	2104.8	838	2104.5	839	2104.2
840	2103.1	841	2102.8	842	2102.5	843	2102.2	844	2101.9
845	2100.0	846	2099.7	847	2099.4	848	2099.1	849	2098.8
850	2097.7	851	2097.4	852	2097.1	853	2096.8	854	2096.5
855	2095.4	856	2095.1	857	2094.8	858	2094.5	859	2094.2
860	2093.1	861	2092.8	862	2092.5	863	2092.2	864	2091.9
865	2090.0	866	2089.7	867	2089.4	868	2089.1	869	2088.8
870	2087.7	871	2087.4	872	2087.1	873	2086.8	874	2086.5
875	2085.4	876	2085.1	877	2084.8	878	2084.5	879	2084.2
880	2083.1	881	2082.8	882	2082.5	883	2082.2	884	2081.9
885	2080.0	886	2079.7	887	2079.4	888	2079.1	889	2078.8
890	2077.7	891	2077.4	892	2077.1	893	2076.8	894	2076.5
895	2075.4	896	2075.1	897	2074.8	898	2074.5	899	2074.2
900	2073.1	901	2072.8	902	2072.5	903	2072.2	904	2071.9
905	2070.0	906	2069.7	907	2069.4	908	2069.1	909	2068.8
910	2067.7	911	2067.4	912	2067.1	913	2066.8	914	2066.5
915	2065.4	916	2065.1	917	2064.8	918	2064.5	919	2064.2
920	2063.1	921	2062.8	922	2062.5	923	2062.2	924	2061.9
925	2060.0	926	2059.7	927	2059.4	928	2059.1	929	2058.8
930	2057.7	931	2057.4	932	2057.1	933	2056.8	934	2056.5
935	2055.4	936	2055.1	937	2054.8	938	2054.5	939	2054.2
940	2053.1	941	2052.8	942	2052.5	943	2052.2	944	2051.9
945	2050.0	946	2049.7	947	2049.4	948	2049.1	949	2048.8
950	2047.7	951	2047.4	952	2047.1	953	2046.8	954	2046.5
955	2045.4	956	2045.1	957	2044.8	958	2044.5	959	2044.2
960	2043.1	961	2042.8	962	2042.5	963	2042.2	964	2041.9
965	2040.0	966	2039.7	967	2039.4	968	2039.1	969	2038.8
970	2037.7	971	2037.4	972	2037.1	973	2036.8	974	2036.5
975	2035.4	976	2035.1	977	2034.8	978	2034.5	979	2034.2
980	2033.1	981	2032.8	982	2032.5	983	2032.2	984	2031.9
985	2030.0	986	2029.7	987	2029.4	988	2029.1	989	2028.8
990	2027.7	991	2027.4	992	2027.1	993	2026.8	994	2026.5
995	2025.4	996	2025.1	997	2024.8	998	2024.5	999	2024.2
1000	2023.1	1001	2022.8	1002	2022.5	1003	2022.2	1004	2021.9

12" Yellow Birch, 27 ft. right of Sta. 452+11.4, Elev. 2304.0
 12" Spruce, 14 ft. right of Sta. 457+5.3, Elev. 2280.84
 0" Fir, 19 ft. right of Sta. 464+37, Elev. 2237.44

SERIES F No 105-D
 SHEET 3 of 47

Col. Sta	Le. H	Right	Sta	Left	Dist. from	Right	Dist. from
4647.7	21'	24'	46876-46880	104	40	176	
4771.22	24'	24'	46876-47010	104	40	176	
4787.00	24'	24'	47152	96	80	176	

Size	Dist.	Dist.	Dist.	Dist.	Dist.	Dist.	Dist.
36x36	18	39	10x4	27	54	51.2	124.4
474.00	15	39	10x4	27	46912	10.8	124.4
4771.22	18	42					

Size	Dist.	Dist.	Dist.	Dist.	Dist.	Dist.	Dist.
36x36	18	39	10x4	27	54	51.2	124.4
474.00	15	39	10x4	27	46912	10.8	124.4
4771.22	18	42					

Size	Dist.	Dist.	Dist.	Dist.	Dist.	Dist.	Dist.
36x36	18	39	10x4	27	54	51.2	124.4
474.00	15	39	10x4	27	46912	10.8	124.4
4771.22	18	42					

Size	Dist.	Dist.	Dist.	Dist.	Dist.	Dist.	Dist.
36x36	18	39	10x4	27	54	51.2	124.4
474.00	15	39	10x4	27	46912	10.8	124.4
4771.22	18	42					

Size	Dist.	Dist.	Dist.	Dist.	Dist.	Dist.	Dist.
36x36	18	39	10x4	27	54	51.2	124.4
474.00	15	39	10x4	27	46912	10.8	124.4
4771.22	18	42					

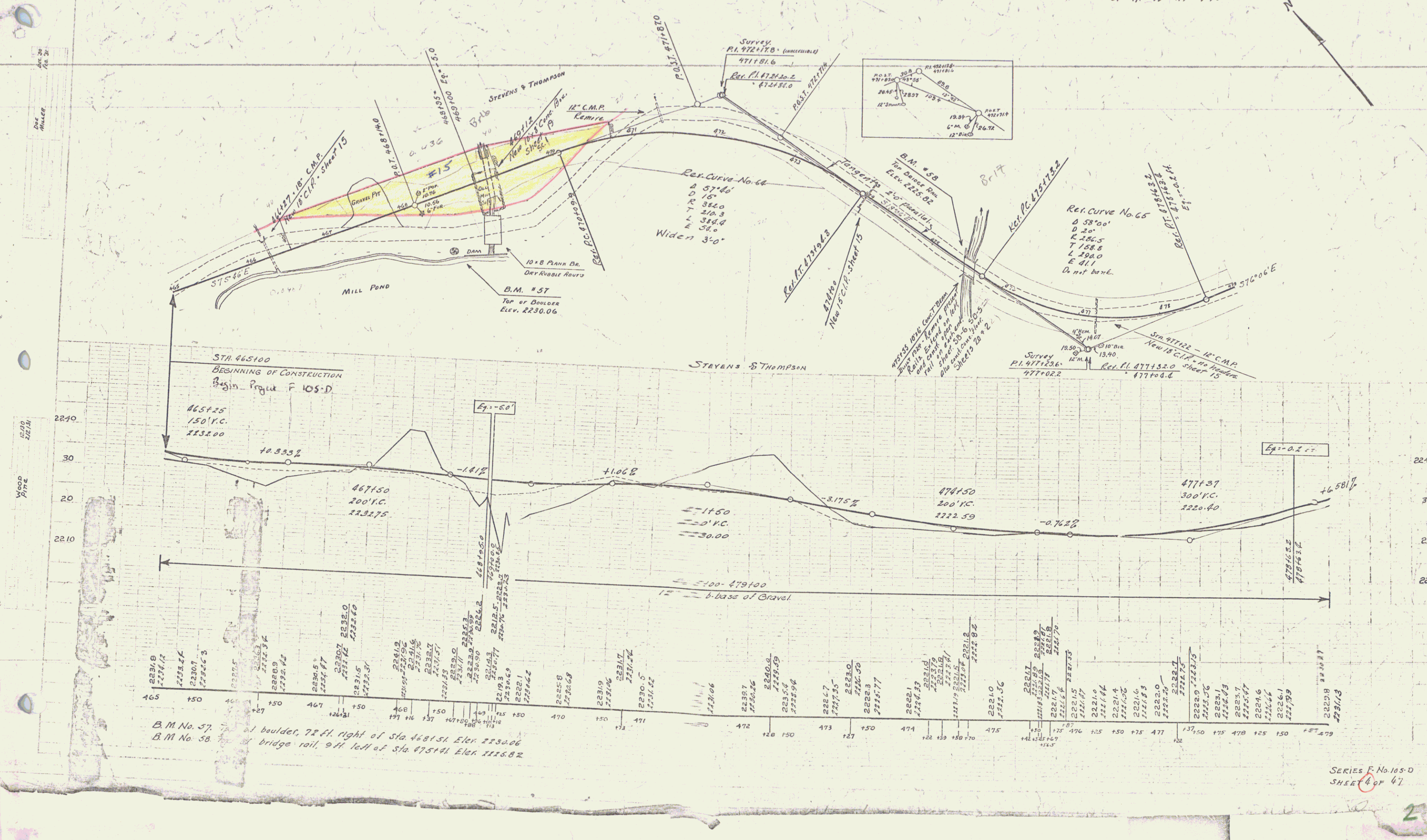
Size	Dist.	Dist.	Dist.	Dist.	Dist.	Dist.	Dist.
36x36	18	39	10x4	27	54	51.2	124.4
474.00	15	39	10x4	27	46912	10.8	124.4
4771.22	18	42					

Size	Dist.	Dist.	Dist.	Dist.	Dist.	Dist.	Dist.
36x36	18	39	10x4	27	54	51.2	124.4
474.00	15	39	10x4	27	46912	10.8	124.4
4771.22	18	42					

Size	Dist.	Dist.	Dist.	Dist.	Dist.	Dist.	Dist.
36x36	18	39	10x4	27	54	51.2	124.4
474.00	15	39	10x4	27	46912	10.8	124.4
4771.22	18	42					

Size	Dist.	Dist.	Dist.	Dist.	Dist.	Dist.	Dist.
36x36	18	39	10x4	27	54	51.2	124.4
474.00	15	39	10x4	27	46912	10.8	124.4
4771.22	18	42					

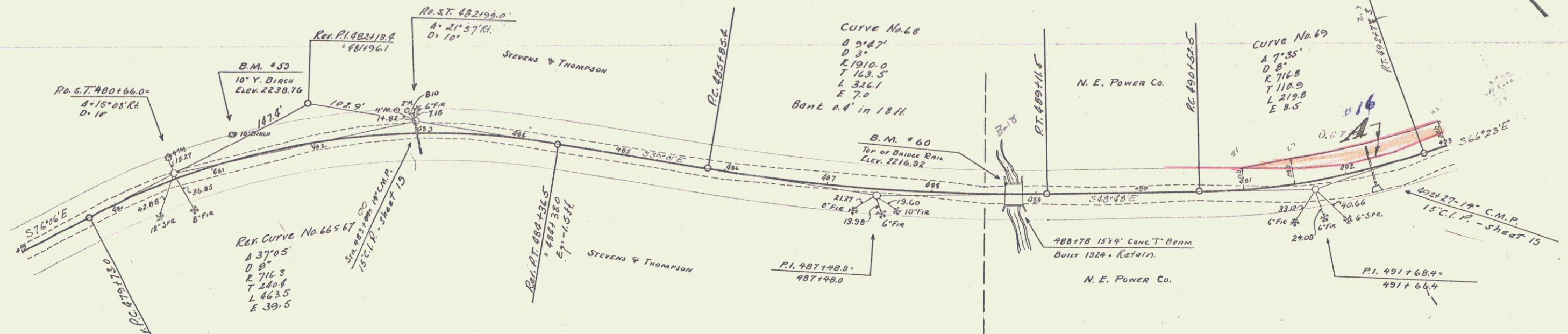
Parcel Kind of Date of Grantor
 A Q.C.D. 9-1-31 Stevens & Thompson Paper Co.
 Grantor: Stevens & Thompson Paper Co.
 Grantee: Woodford
 Recorded: 106-D 1931 4 47
 Date: 1-9-32



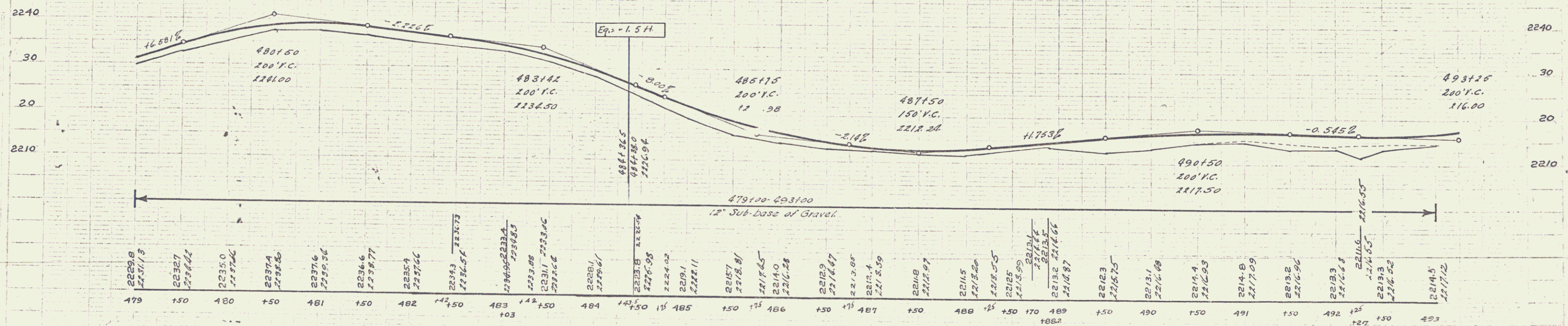
B.M. No. 57 Top of Boulder, 72 ft. right of Sta. 4681.51 Elev. 2230.06
 B.M. No. 58 Top of bridge rail, 9 ft. left of Sta. 4751.41 Elev. 2225.82

WOOD GUARD RAIL REQUIRED			CABLE GUARD RAIL REQUIRED			NEW CAST IRON PIPE CULVERTS REQUIRED		
Sta.	Left	Right	Sta.	Left	Right	Sta.	Diom.	Length
48310.3	26'	26'	488160	92'	80'	492121	15"	39'
492127	26'	26'						75'

105-0 1931 5 47



PARCEL INSTRUMENT	DATE	GRANTOR	GRANTEE	RECORDED	REMARKS
A-B-C	11-10-33	N. ENG. POWER CO.	11.0 FT.	BOOK 259	12-1-33

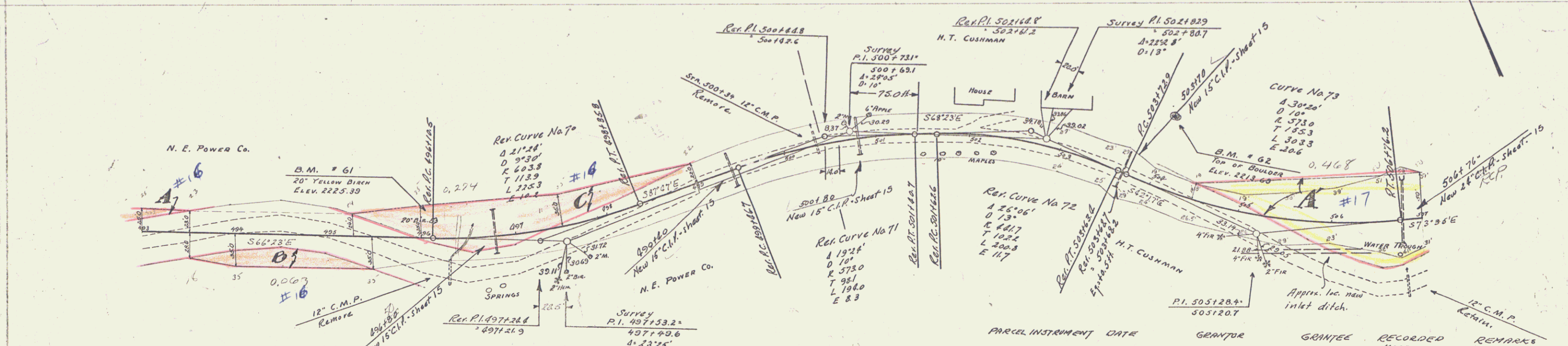


B.M. No. 59. 10" Yellow birch, 20 ft left of Sta. 48126. Elev. 2238.76
 B.M. No. 60. Top of bridge rail, 9.5 ft left of Sta. 488170. Elev. 2216.92

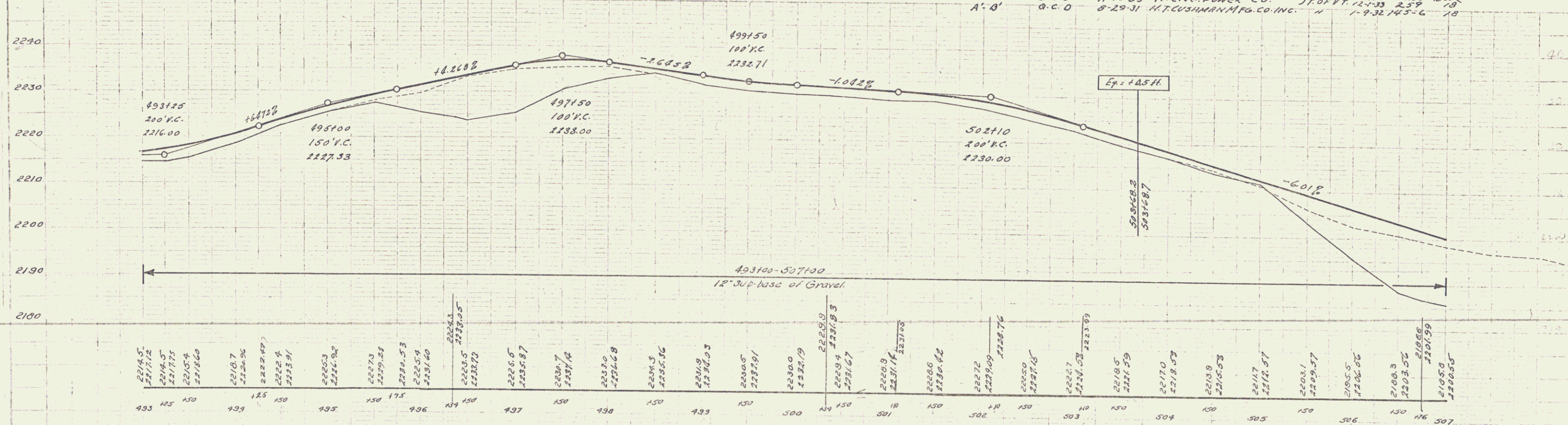
SERIES F. No. 105-D
 SHEET 5 of 67

WOOD GUFER RAIL REQUIRED			CABLE GUARD RAIL REQUIRED			NEW CAST IRON PIPE CULVERTS REQUIRED					
Cul. Sta.	Left	Right	Sta.	Length	Cost	Pay Item	Size	Length	Conc. C/G	Steel	Conc. C/A
496180		39'	495160-498100 LK	240'	40	228'	496180	15"	39'	3.54	33'
499180	24'	24'	505120-505180 LK	289'	40	328'	499140	15"	39'	1.54	12'
500180	24'	24'	505170-507150 MK	176'	40	216'	500180	15"	42'	1.54	17'
503170	24'	24'				874	503170	15"	42'	1.54	17'
							506176	24"	72'	54'	24'

FED. ROAD DIST. NO.	STATE	SEC. NO.	FISCAL YEAR	SHEET NO.	TOTAL SHEETS
3	VT	1050	1931	6	67



PARCEL INSTRUMENT	DATE	GRANTOR	GRANTEE	RECORDED	REMARKS
A-B-C	11-10-33	N. ENG. POWER CO.	ST. OF VT.	19	
A'-B'	8-29-31	M.T. CUSHMAN	MFG. CO. INC.	18	



B.M. No. 61. 20' Yellow Birch, 16th left of sta. 496112. Elev. 2225.39
 B.M. No. 62. Top of Boulder, 76th left of sta. 505196. Elev. 2213.60

WOOD GUESS RAIL REQUIRED

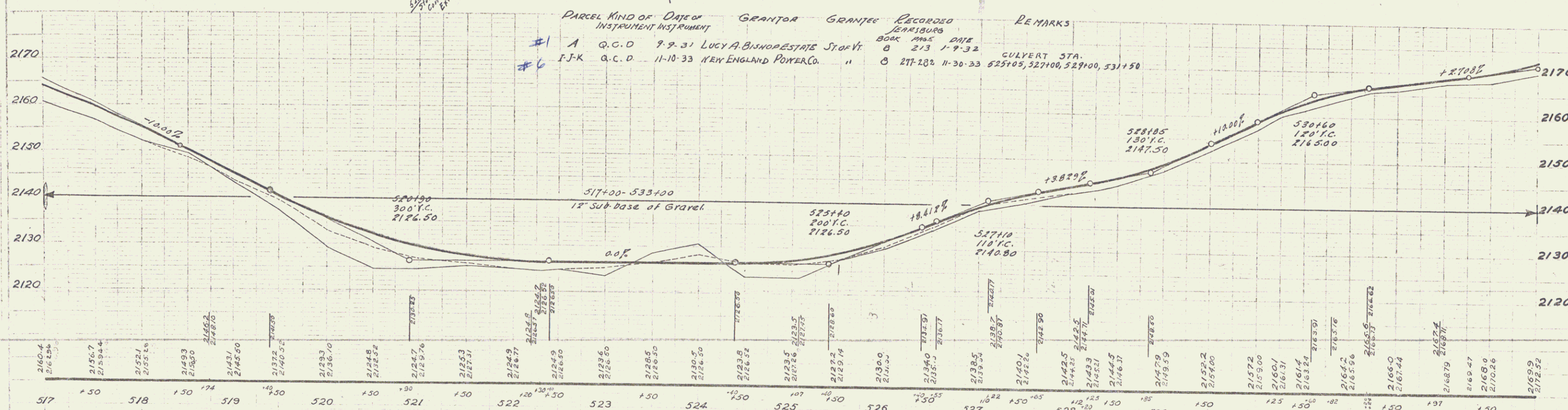
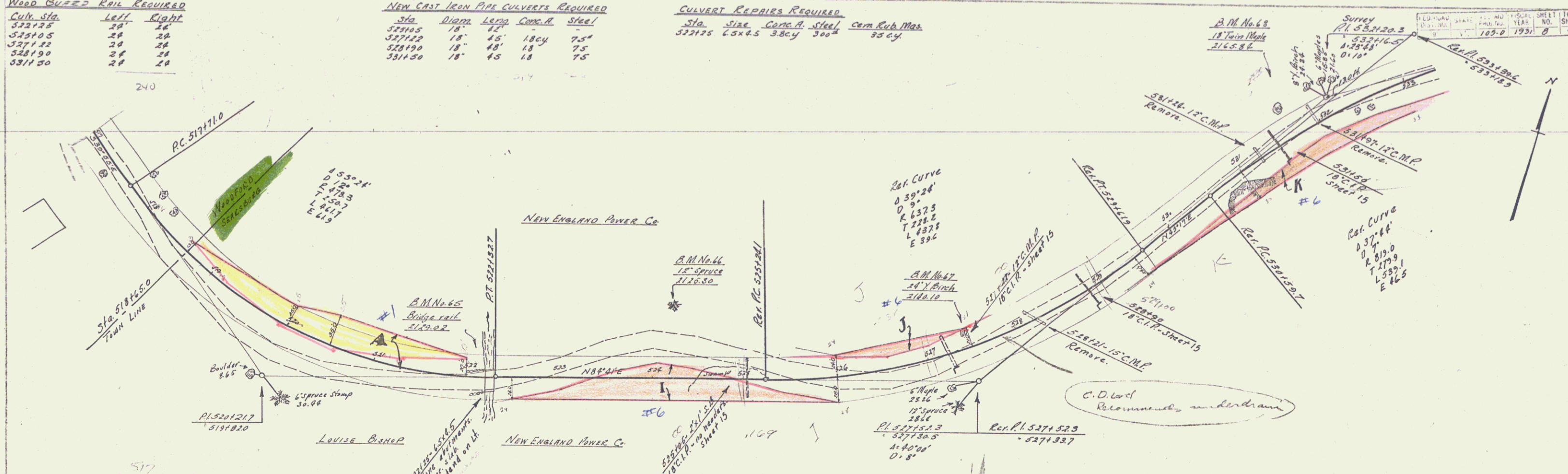
Culv. Sta.	Left	Right
522125	24'	26'
527122	24'	24'
528190	24'	24'
531120	24'	24'

NEW CAST IRON PIPE CULVERTS REQUIRED

Sta.	Diam.	Length	Comp. H.	Steel
525105	18"	12'		
527122	18"	45'	18cy	75'
528190	18"	48'	18	75'
531120	18"	45'	18	75'

CULVERT REPAIRS REQUIRED

Sta.	Size	Comp. H.	Steel	Cem. Rub. Mas.
522125	6x4.5	38cy	300'	35cy



PARCEL	KIND OF INSTRUMENT	DATE	GRANTOR	GRANTEE	RECORDED	REMARKS
#1	A	Q.C.D	9-9-31	LUCY A. BISHOP ESTATE	STAFF	BOOK PAGE DATE
#6	F.J.K	Q.C.D	11-10-33	NEW ENGLAND POWER CO.		217-23 11-30-33

B.M. No. 65. Point spot on rail of conc bridge, 6th left of Sta 522120. Elev 2129.02
 B.M. No. 66. Spike in root of 12' Spruce, 80th left of Sta 524125 Elev 2125.30
 B.M. No. 67. Spike in root of 14' Yellow Birch, 10th left of Sta 527125 Elev 2140.10
 B.M. No. 68. Spike in trunk of 18' Twin Maple, 29th left of Sta 531120 Elev 2165.84

SERIES F- No 105-D
 SHEET B OF 47

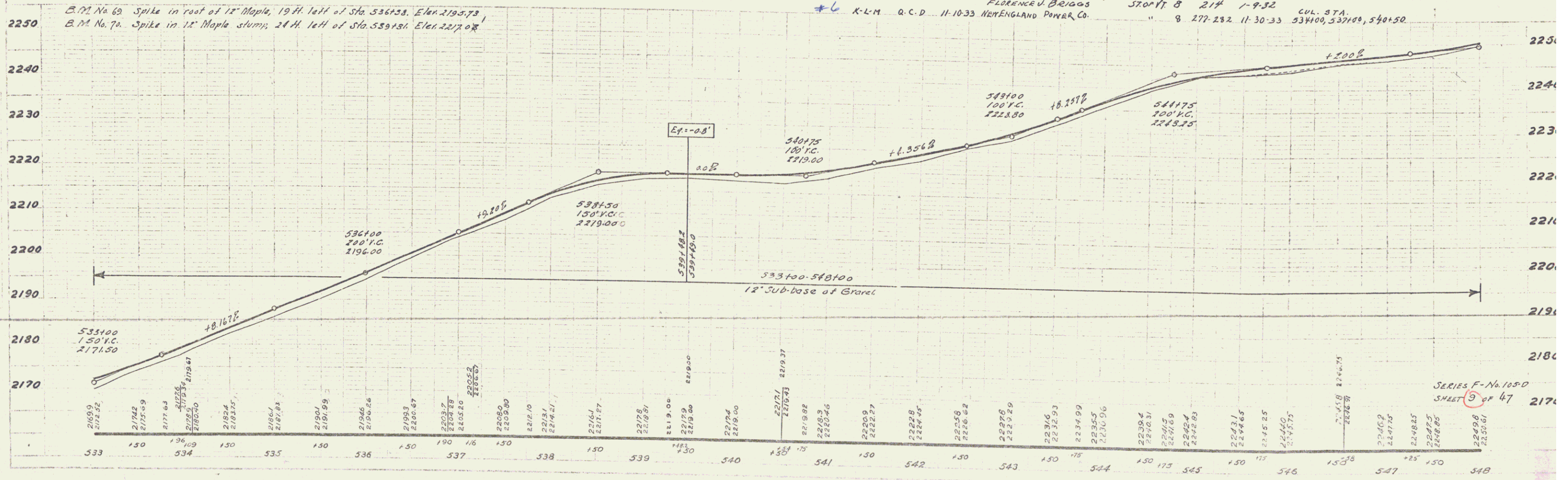
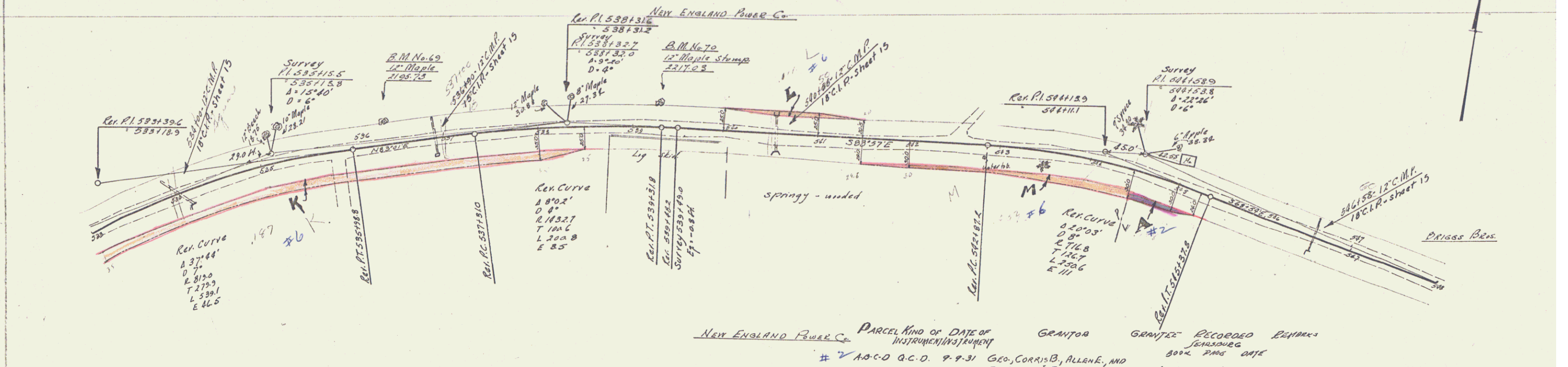
WOOD GUARD RAIL REQUIRED

Culv. Sta.	Left	Right
534100	24	24
534150	24	24
540155	24	24
546158	24	24

NEW CAST IRON PIPE CULVERTS REQUIRED

Sta.	Diam.	Length	Conc. A	Steel
534100	18"	48'	18c.4	7.5
534150	18"	48'	18	11.1
540155	18"	45'	18	9.4
546158	18"	42'	18	9.5

FED. ROAD DIST. NO.	STATE	FILE NO. OF ROAD	YEAR	SHEET NO.	TOTAL SHEETS
9	Vt.	105-D	1931	9	47

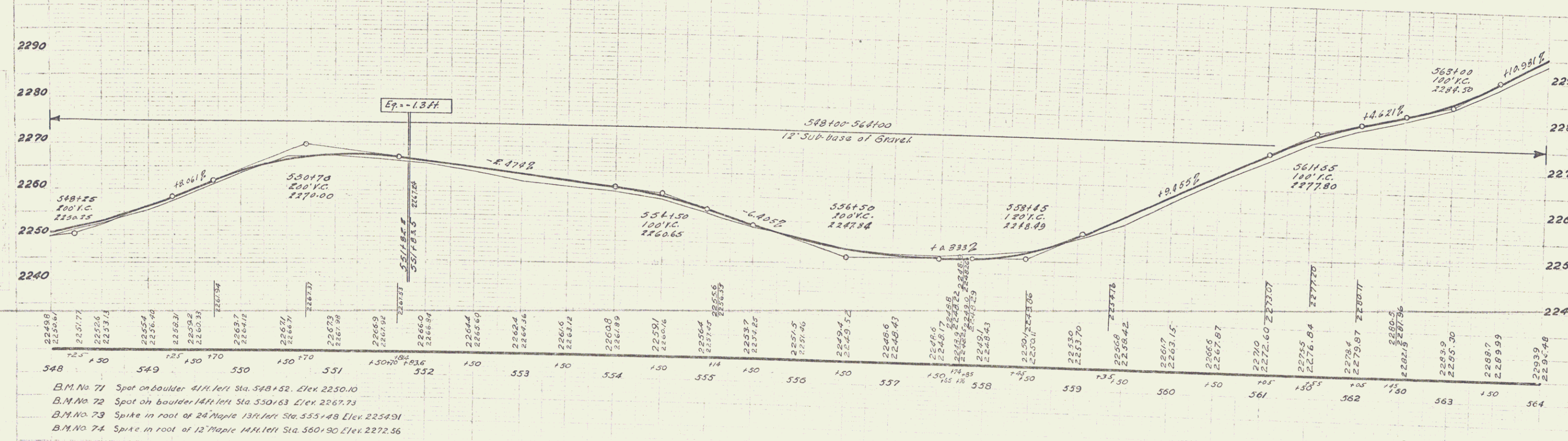
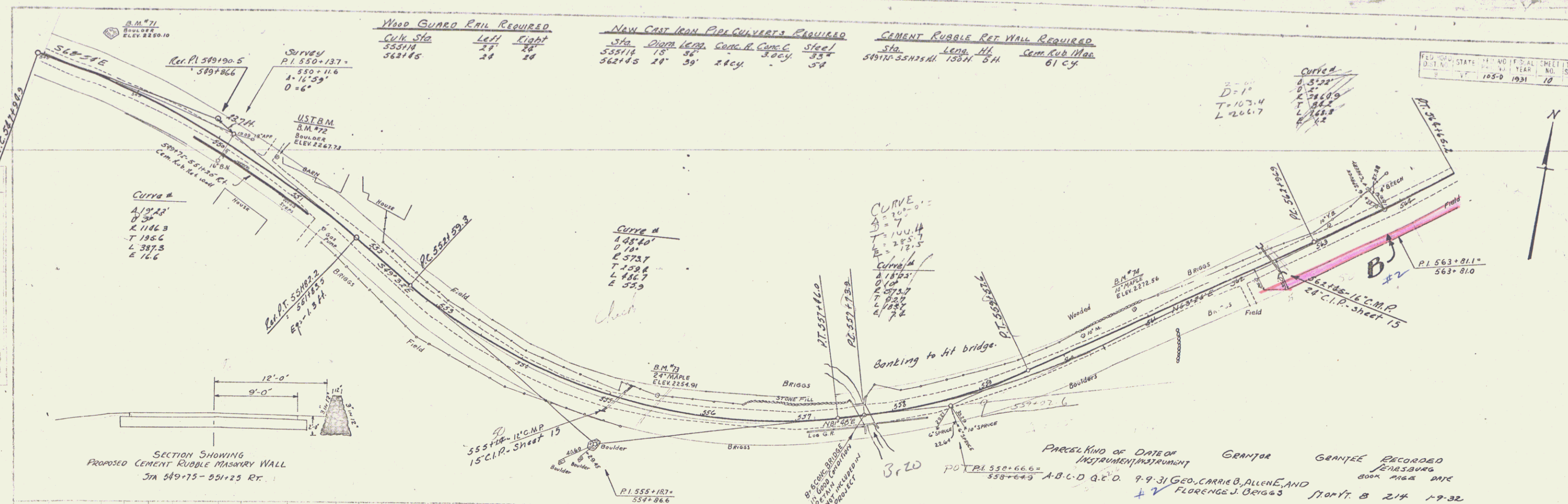


B.M. No. 69. Spike in root of 12" Maple, 19 ft. left of Sta. 536158. Elev. 2195.73
 B.M. No. 70. Spike in 12" Maple stump, 24 ft. left of Sta. 539154. Elev. 2217.08

NEW ENGLAND POWER CO. PARCEL KIND OF DATE OF GRANTOR GRANTEE RECORDED RETURN

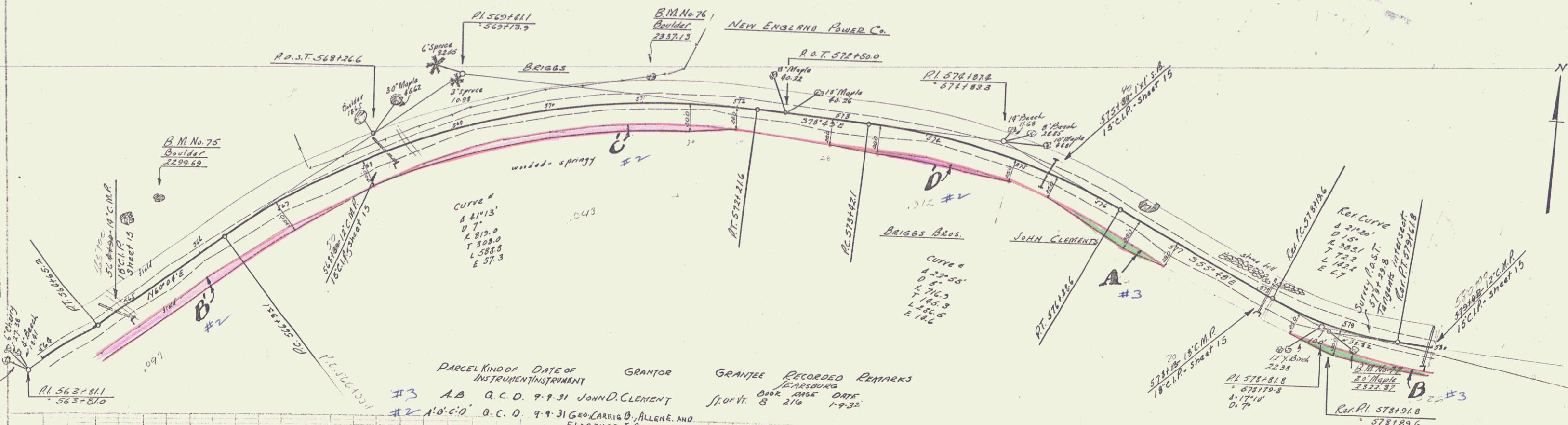
Parcel No.	Kind of Instrument	Date	Grantor	Grantee	Recorded	Return
# 1	A.C.D.	9-9-31	Geo. Corris B. Allen & Florence J. Briggs	Stoughton	8	214
# 2	K-L-M	11-10-33	NEW ENGLAND POWER CO.		9	277-282

SERIES F-16-105-D
 SHEET 9 of 47

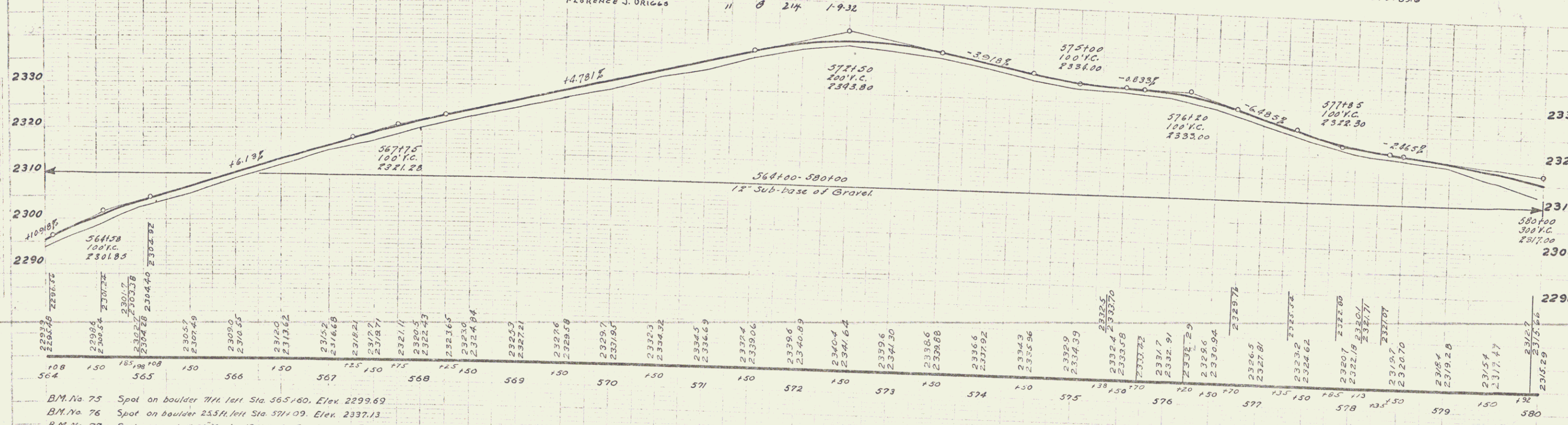


WOOD GUARD-RAIL REQUIRED				NEW CAST IRON PIPE CULVERTS REQUIRED			
Sta.	Left	Right	Sta.	Diag. Len.	Comp. H. Conc.	Steel	
568190	20'	20'	568190	18'	18" C.Y.	74'	
568190	20'	20'	568190	15'	15"	75	
575189	20'	20'	575189	15'	30"	55	
578113	20'	20'	578113	18'	18"	27	
579192	24'	24'	579192	15'	15"	73	

REV. 105-0 1931 11 47



PARCEL	KIND OF INSTRUMENT	DATE OF INSTRUMENT	GRANTOR	GRANTEE	RECORDED	REMARKS
#3	A.B. Q.C.D.	9-9-31	JOHN D. CLEMENT	ST. OF VT.	8 214	1-9-32
#2	A.B. Q.C.D.	9-9-31	GEO. LARRIE O. ALLEN & FLORENCE J. ORIGAS	ST. OF VT.	8 214	1-9-32



B.M. No. 75 Spot on boulder 71 ft. left Sta. 565+60. Elev. 2299.69
 B.M. No. 76 Spot on boulder 253 ft. left Sta. 571+09. Elev. 2337.13
 B.M. No. 77 Spike in root of 20 Maple 19 ft. right Sta. 579+19. Elev. 2322.37

SERIES F 1101050
SHEET 11 OF 47

ADD GURTS RAIL REQUIRED

Date Sta	Left	Right
584164	24	24
584170	24	24
584180	24	24
584190	24	24
584200	24	24

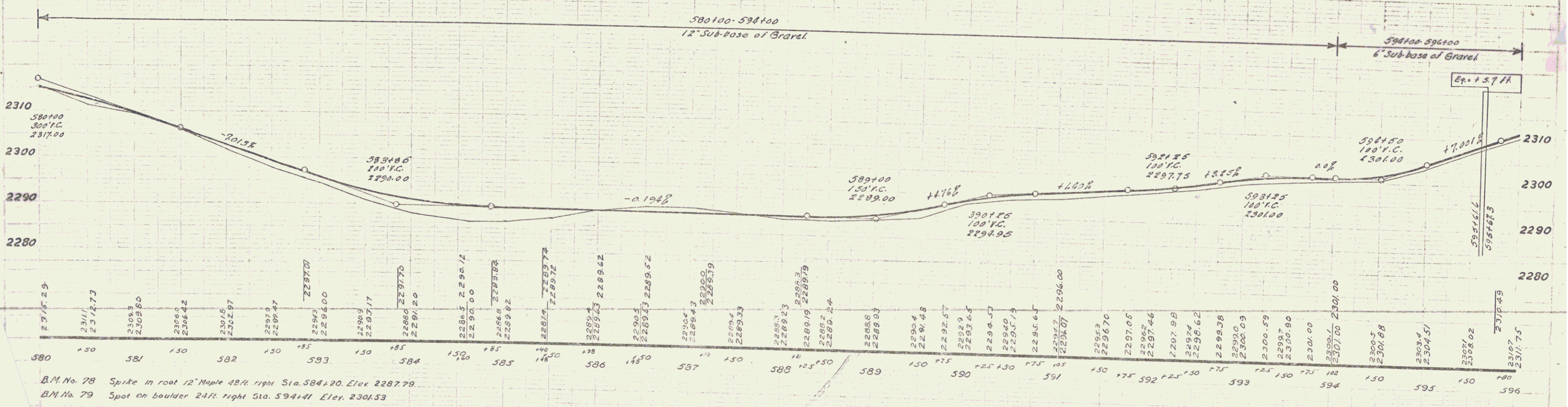
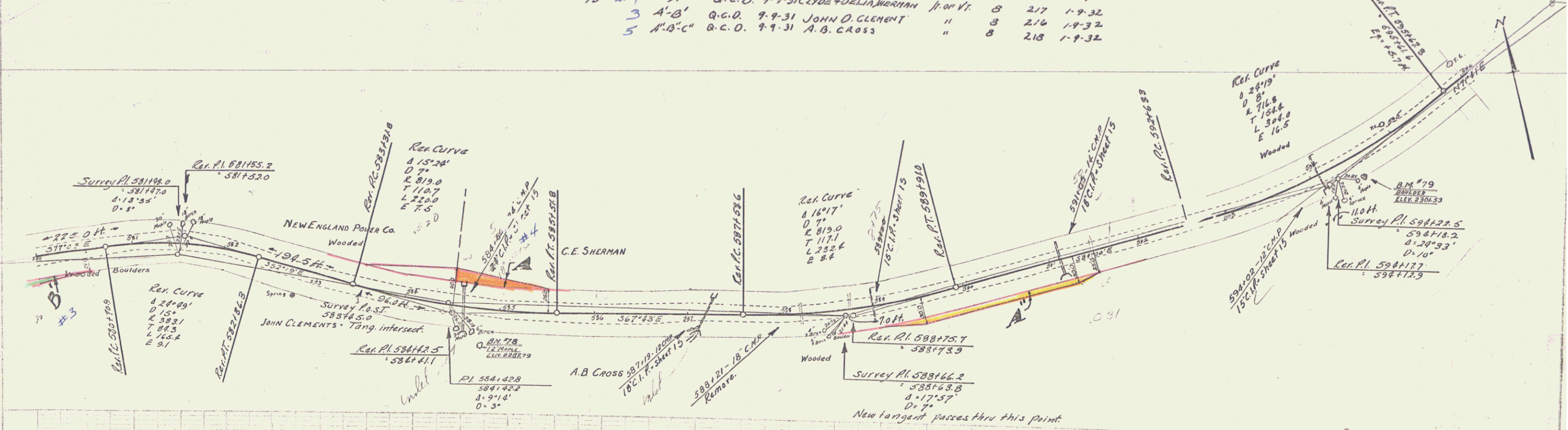
NEW CAST IRON PIPE CONVERTS REQUIRED

Sta	Diag	Long	Conc. A	Conc. Steel
584160	24	60	24cy	54
584170	18	36	18	36
584180	15	30	15	30
584190	18	36	18	36
584200	15	30	15	30

PARCEL KIND OF INSTRUMENT DATE OF GRANTOR GRANTEE RECORDED

Book	Page	Date
3	217	1-9-32
3	216	1-9-32
5	218	1-9-32

102-D 1931 12 47



SERIES F No. 105-D
SHEET 12 OF 47

10

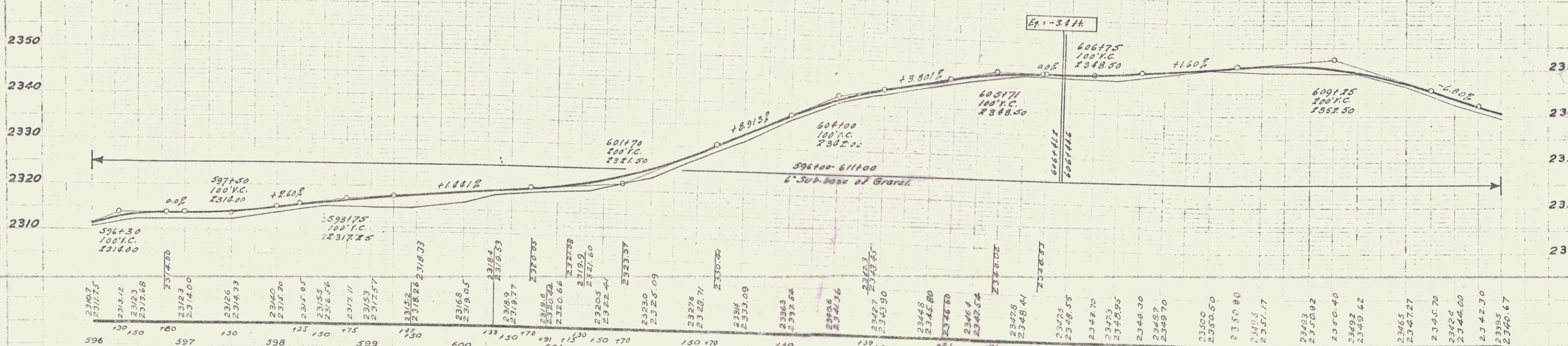
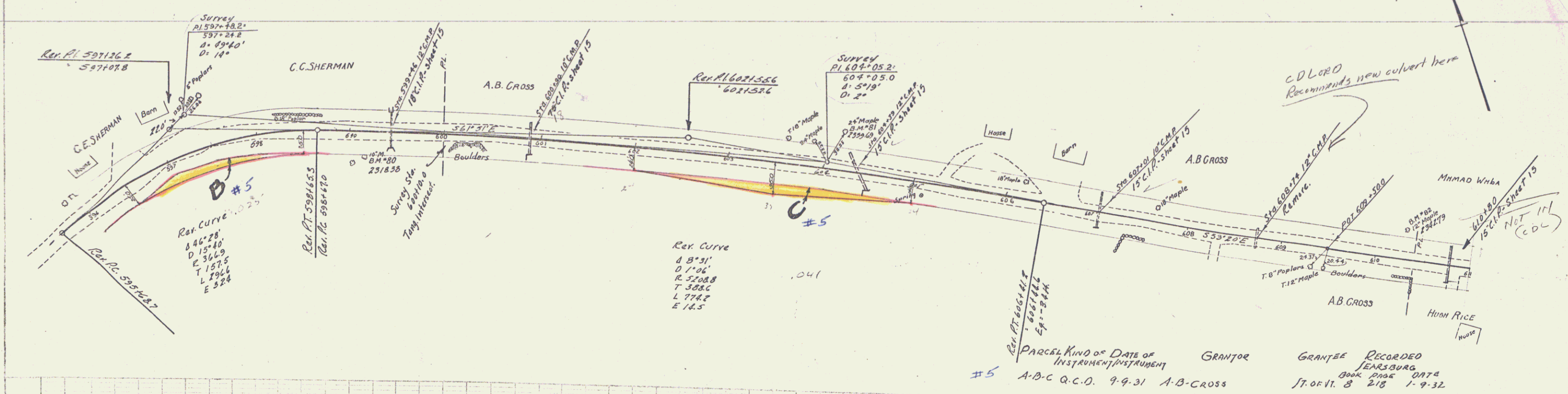
WOOD GULCH RAIL REQUIRED

Culv. Sta	Left	Right
599+86	20'	24'
600+30	20'	24'
600+39	20'	24'
607+01	20'	24'
610+80	20'	24'

NEW CAST IRON PIPE CULVERTS REQUIRED

Sta	Diagn	Leag	Conc. A	Conc. C	Steel
599+86	18"	30'	1.8cy	-	54'
600+30	15"	39'	1.8	-	73
607+01	15"	39'	-	1.5cy	17
610+80	15"	39'	-	1.5	17

ED. HALL STATE
DIST. NO. 105-D 1931



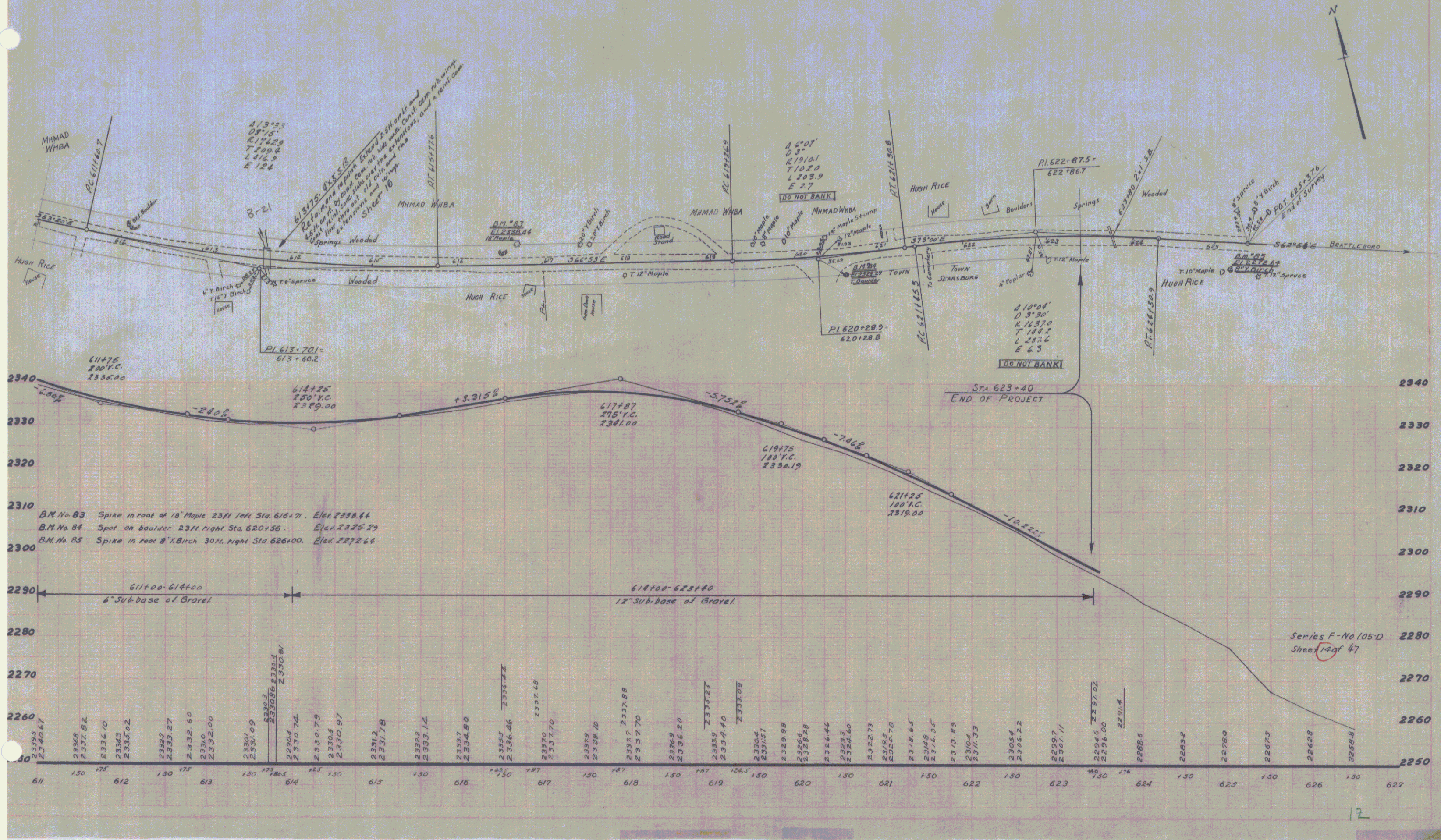
B.M. No 80 Spike in root of 10' Maple 31 ft. right Sta. 599+16 Elev. 2318.38
 B.M. No 81 Spike in root of 24' Maple 20 ft. left Sta. 604+35 Elev. 2339.69
 B.M. No 82 Spike in root of 12' Maple 33 ft. left Sta. 610+30 Elev. 2342.79

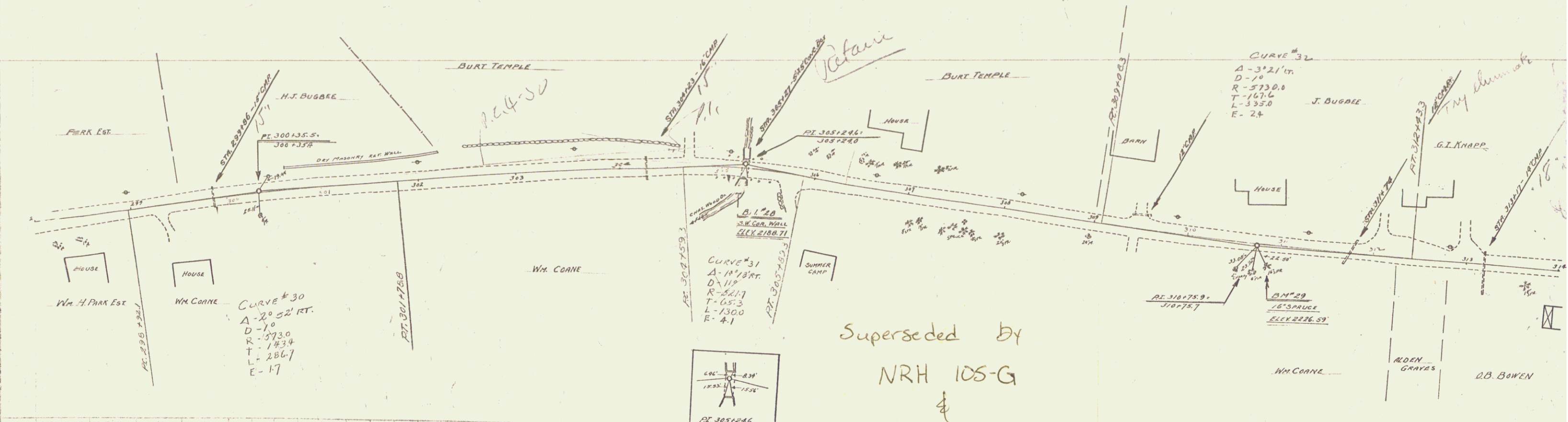
Series F - No. 105 D
 Sheet 13 of 47

WOOD GUARD RAIL REQUIRED
 CULV. STA. LEFT RIGHT
 613+75 34 31

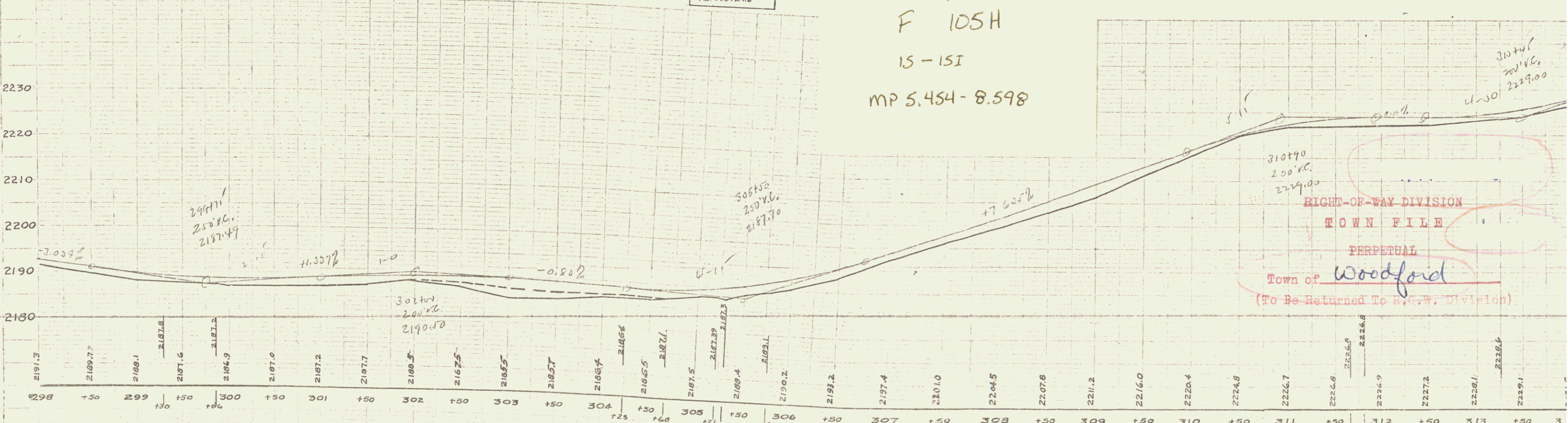
CULVERT REPAIRS REQUIRED
 STA. SIZE CONC. R. STEEL CEMENT CONCRETE GRAVEL MASS
 613+75 4x3 60cy. 432" 6cy. 16 sq. yds.

FED. ROAD DIST. NO.	STATE	FY. AD. PROJ. NO.	FISCAL YEAR	SHEET NO.	TOTAL SHEETS
7	Vt.	1050	1931	14	67

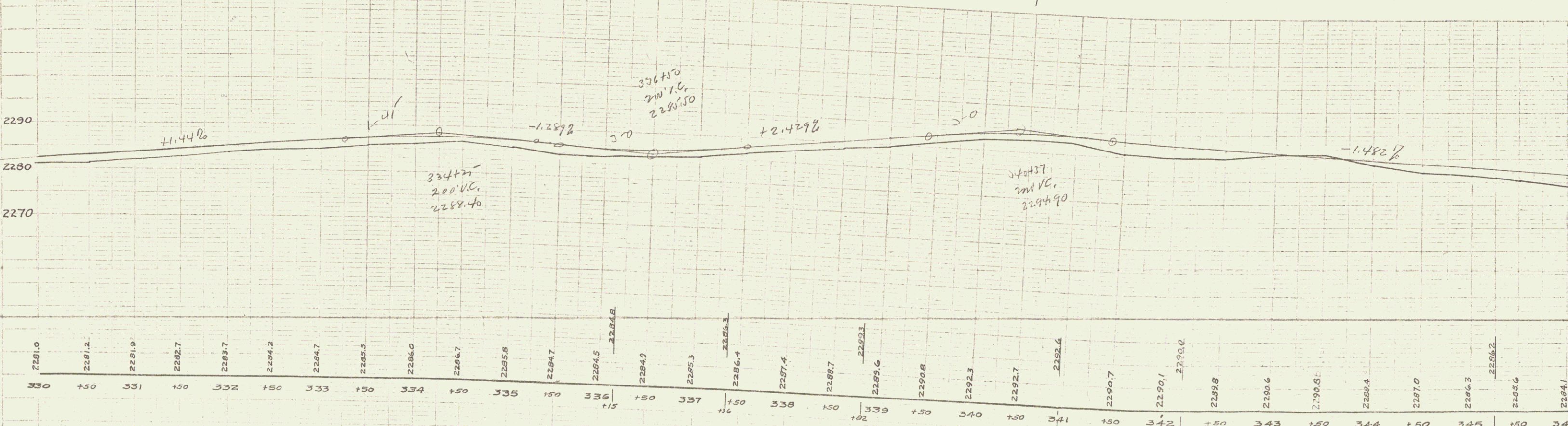
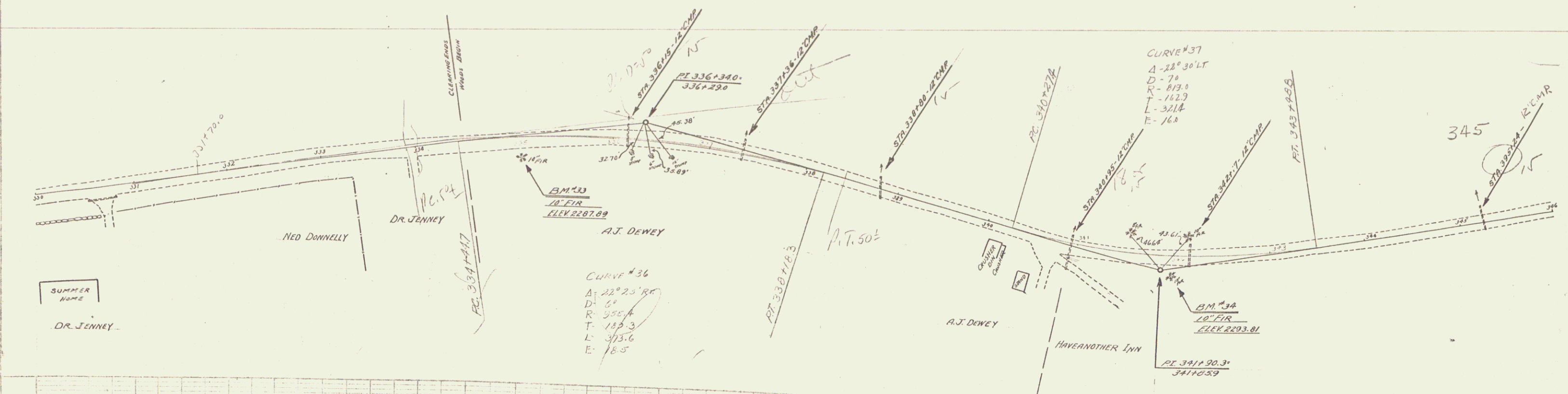


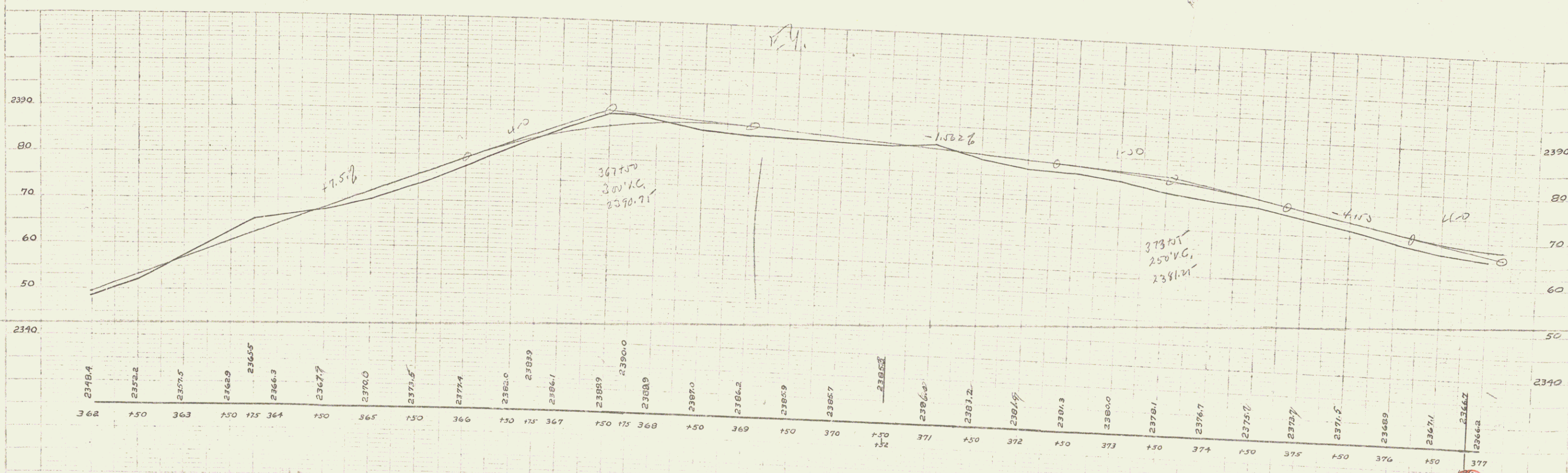
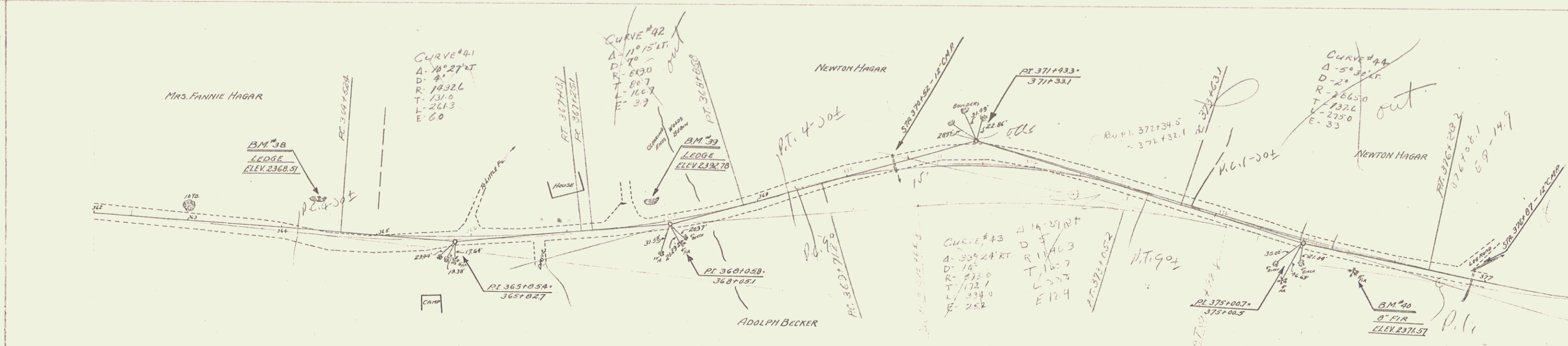


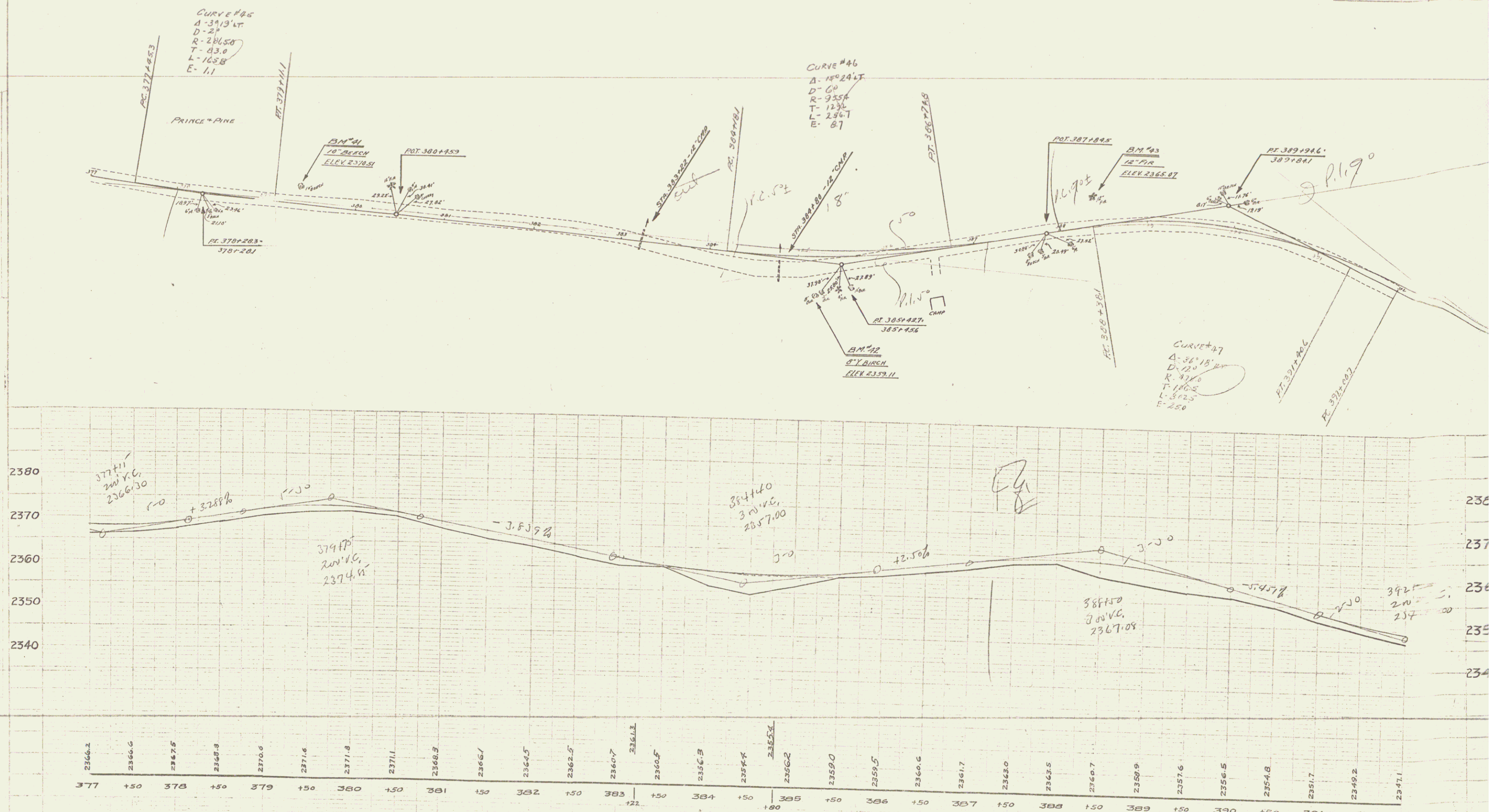
Superseded by
 NRH 105-G
 &
 F 105H
 15-151
 MP 5.454-8.598

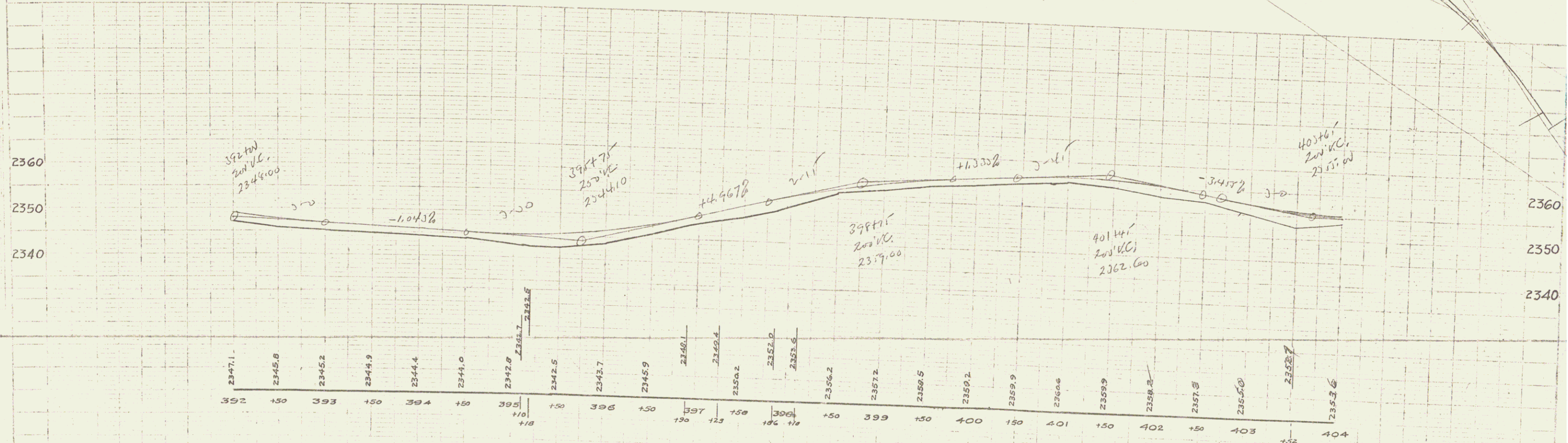
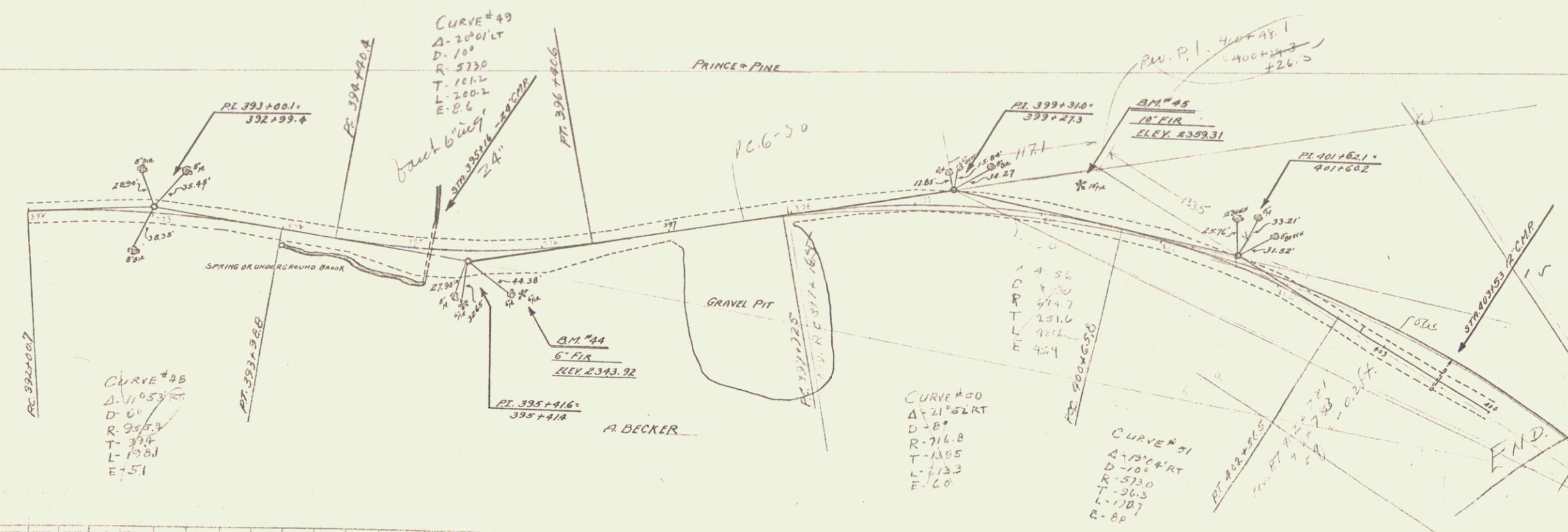


RIGHT-OF-WAY DIVISION
 TOWN FILE
 PERPETUAL
 Town of Woodford
 (To Be Returned To R.O.W. Division)

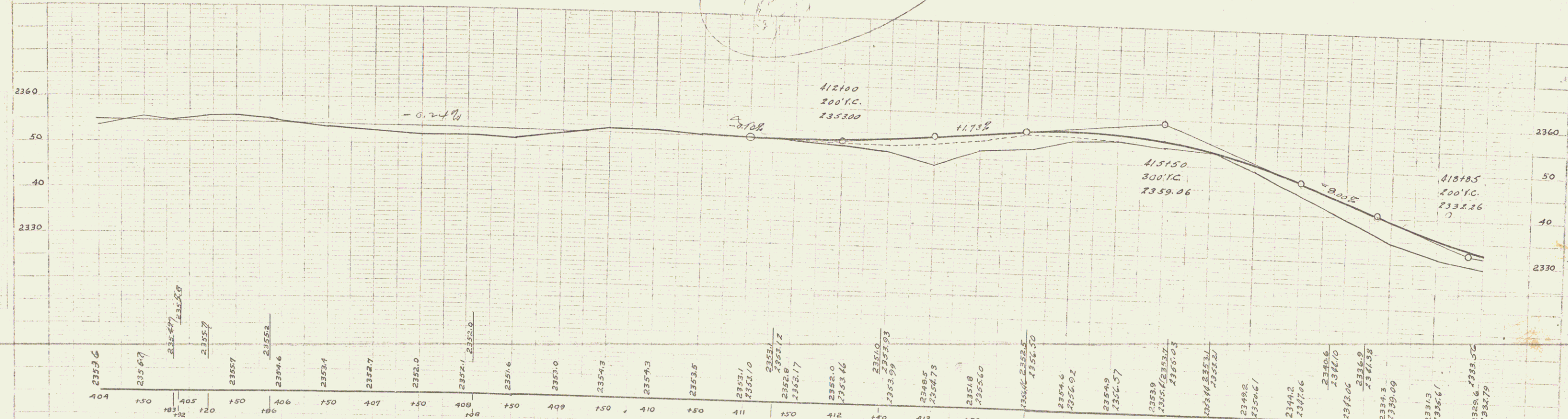
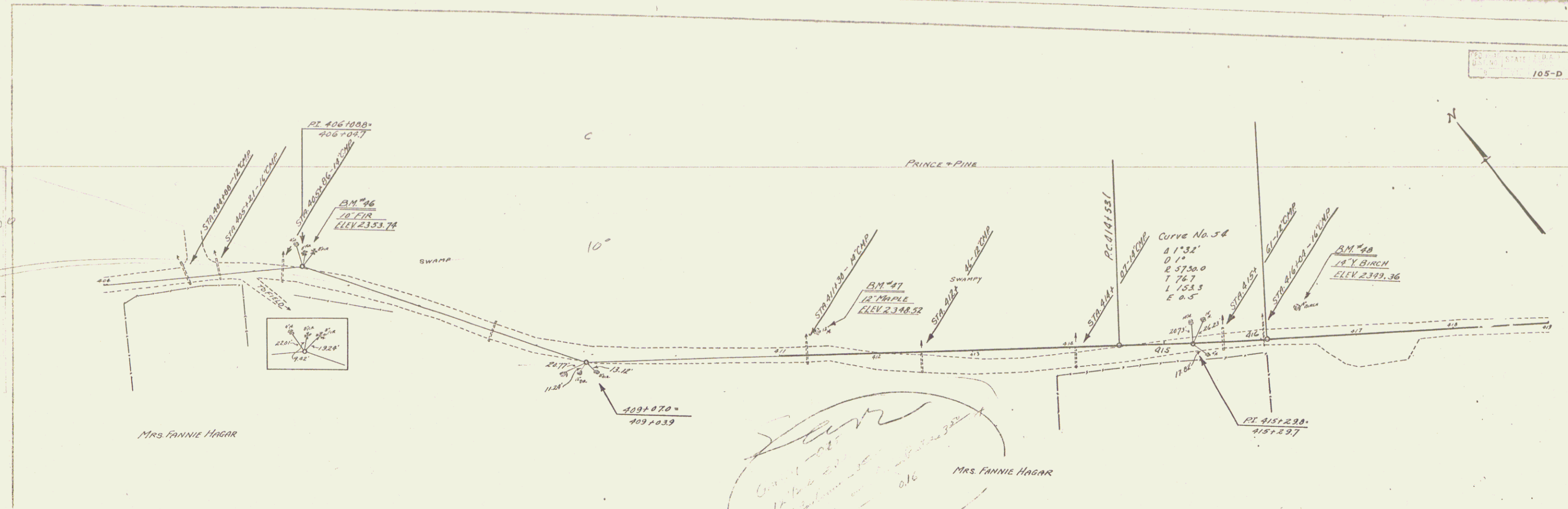






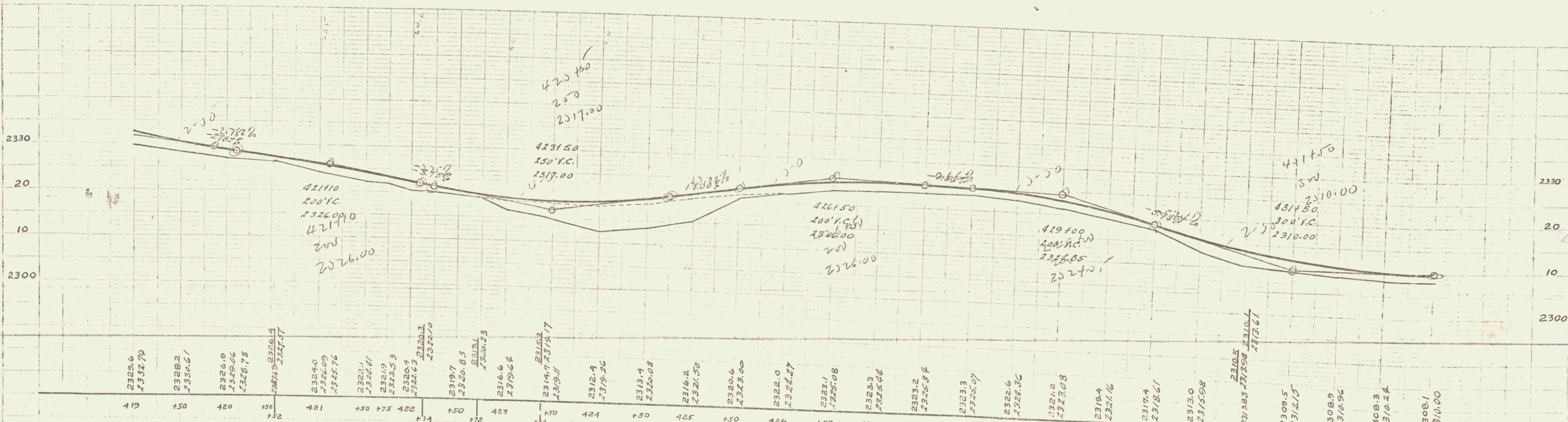
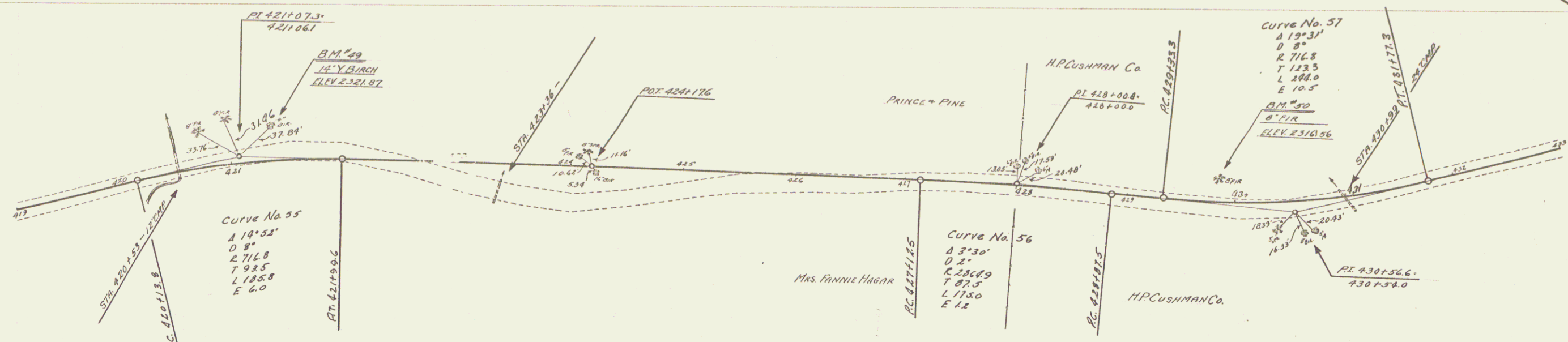


SHEET 15

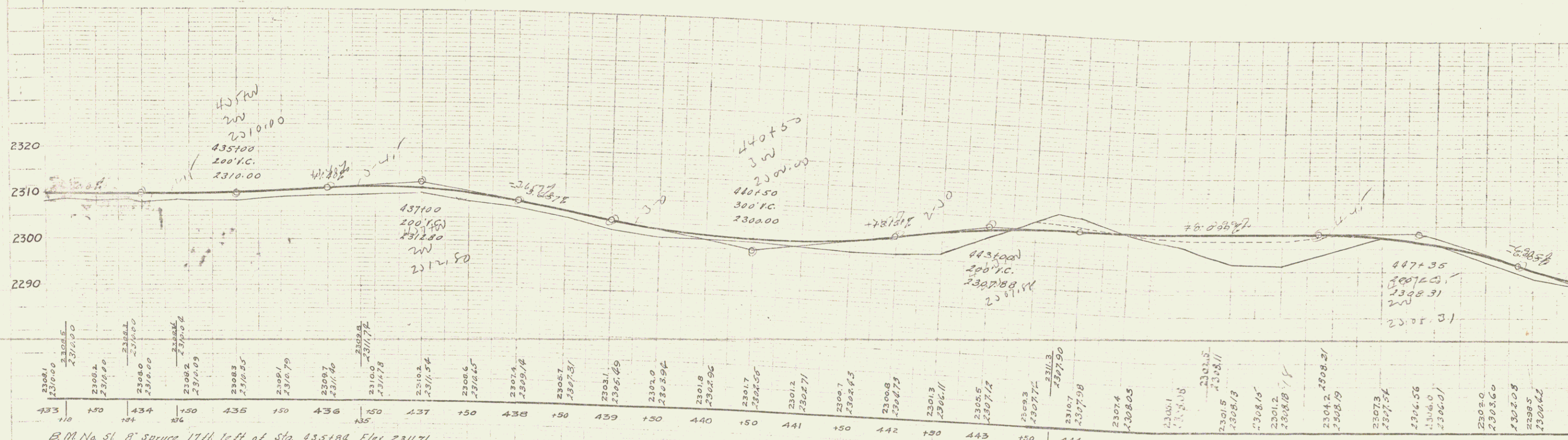
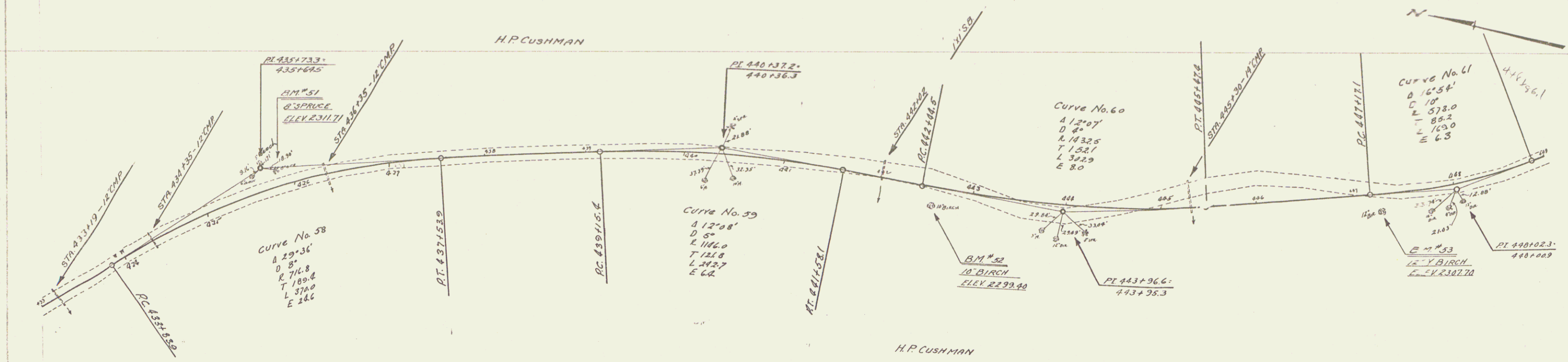


B.M. No. 46, 10' Fir, 23 ft. left of Sta. 406+10. Elev. 2353.74
 B.M. No. 47, 12' Maple, 22.5 ft. left of Sta. 411+38. Elev. 2348.52
 B.M. No. 48, 14' Yellow Birch, 29.5 ft. left of Sta. 416+00. Elev. 2349.36

Handwritten note:
 Curve No. 54
 81'32" D
 1' R
 257.50 T
 75.7 L
 1.523 E
 0.5



B.M. No. 49. 14" Yellow birch, 30 ft. left of Sta 421+35. Elev. 2321.87
 B.M. No. 50. 8" Fir, 18 ft. left of Sta 429+88. Elev. 2318.56



B.M. No. 51 8' Spruce, 17 ft. left of Sta. 435+80. Elev. 2317.71
 B.M. No. 52 10' Yellow Birch, 18 ft. right of Sta. 441+50. Elev. 2299.40
 B.M. No. 53 12' Yellow Birch, 16 ft. right of Sta. 447+20. Elev. 2307.70