

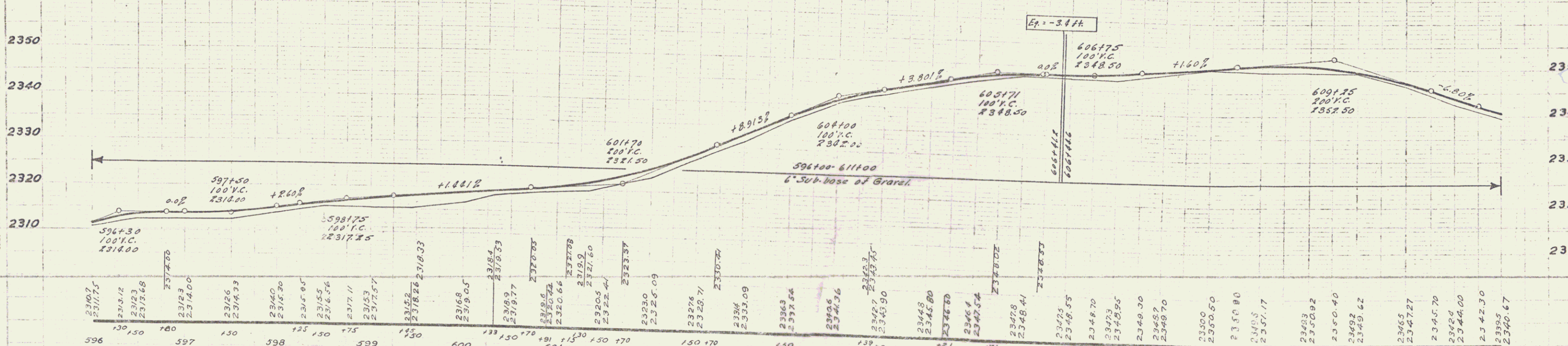
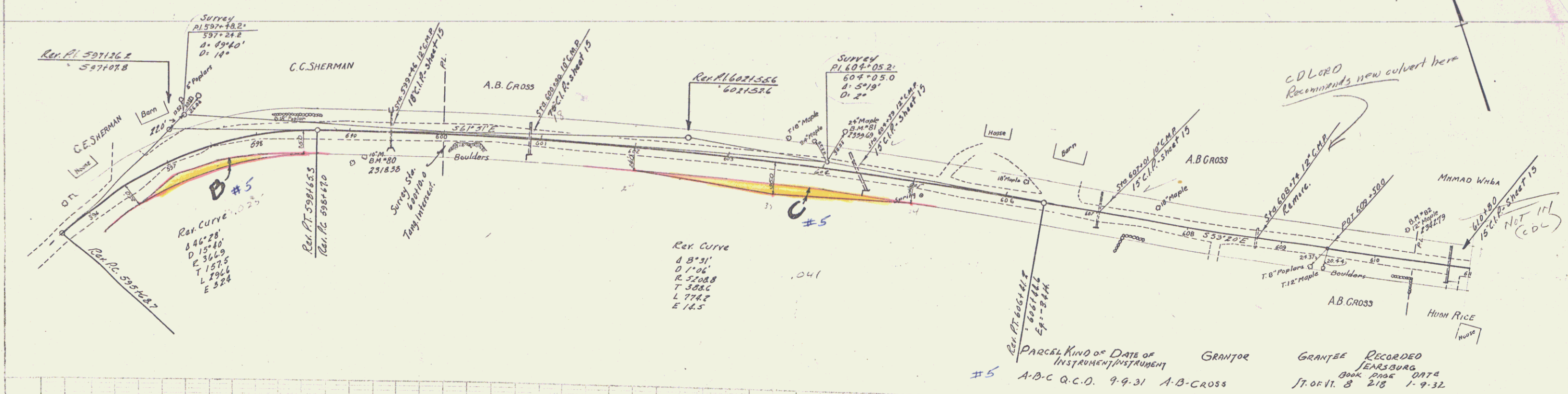
WOOD GULCH RAIL REQUIRED

Culv. Sta	Left	Right
599+86	20'	24'
600+90	20'	24'
601+39	20'	24'
607+01	20'	24'
610+80	20'	24'

NEW CAST IRON PIPE CULVERTS REQUIRED

Sta	Diagn	Leag	Conc. A	Conc. C	Steel
599+86	18"	30'	1.8cy	-	54'
600+90	15"	39'	1.8	-	73
601+39	15"	42'	1.8	-	111
607+01	15"	39'	-	1.5cy	17
610+80	15"	39'	-	1.5	17

ED. HALL STATE
DIST. NO. 105-D 1931



B.M. No. 80 Spike in root of 10' Maple 31 ft. right Sta. 599+16 Elev. 2318.38
 B.M. No. 81 Spike in root of 24' Maple 20 ft. left Sta. 604+39 Elev. 2339.69
 B.M. No. 82 Spike in root of 12' Maple 33 ft. left Sta. 610+30 Elev. 2342.79

Series F - No. 105 D
 Sheet 13 of 47