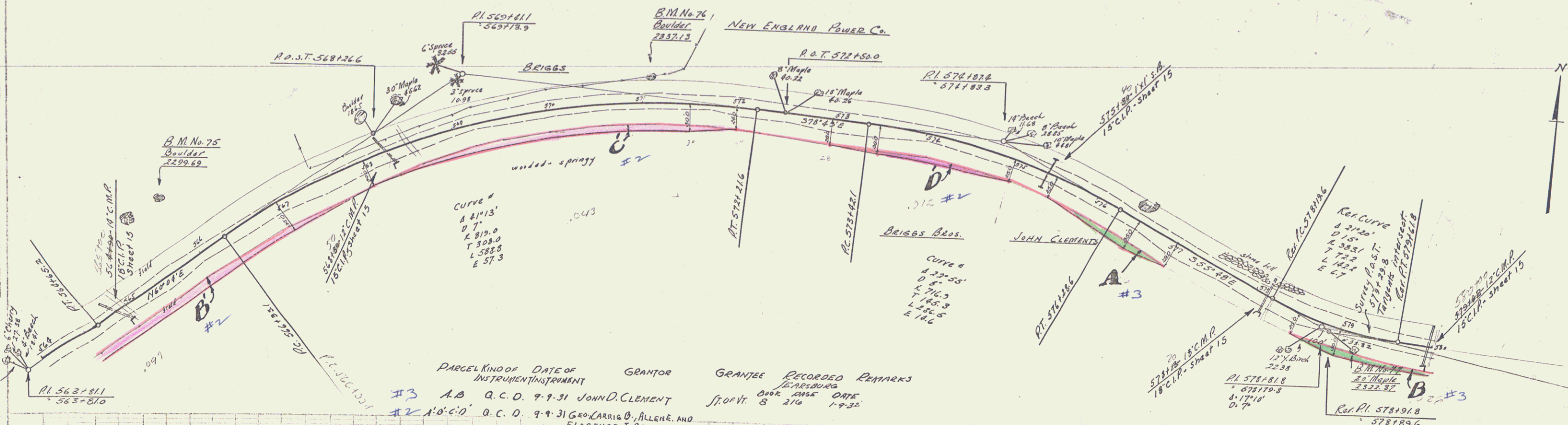
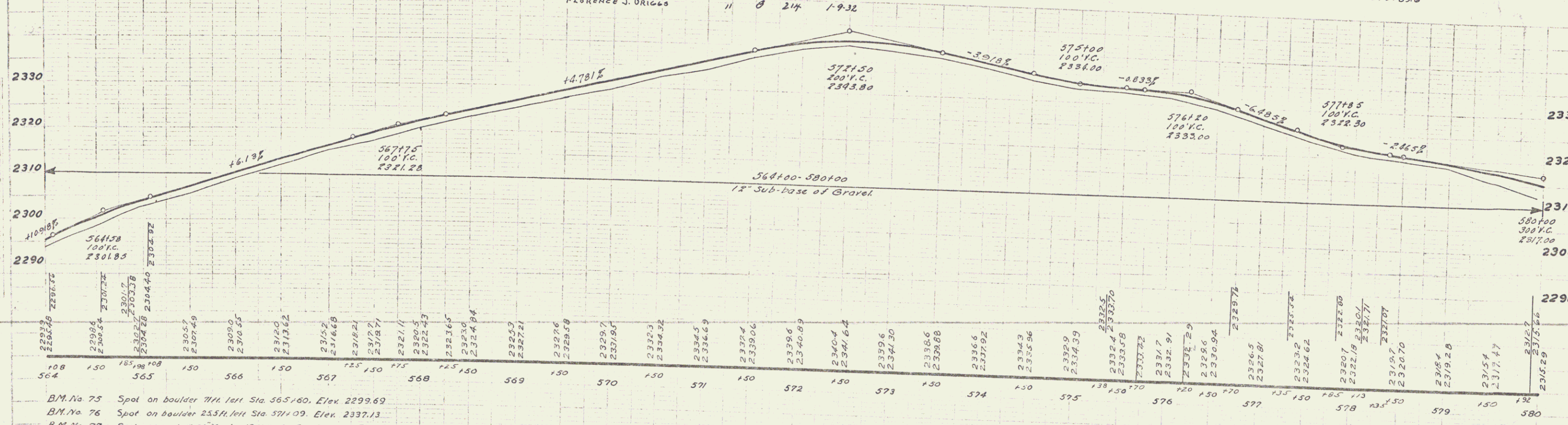


| WOOD GUARD-RAIL REQUIRED | | | | NEW CAST IRON PIPE CULVERTS REQUIRED | | | |
|--------------------------|------|-------|--------|--------------------------------------|-----------------|-------|--|
| Sta. | Left | Right | Sta. | Diag. Len. | Comp. H. Const. | Steel | |
| 568190 | 20' | 20' | 568190 | 18' | 18" C.I. | 74' | |
| 568190 | 20' | 20' | 568190 | 15' | 15" C.I. | 75' | |
| 578189 | 20' | 20' | 578189 | 15' | 30" C.I. | 55' | |
| 578189 | 20' | 20' | 578189 | 18' | 18" C.I. | 27' | |
| 579192 | 24' | 24' | 579192 | 15' | 15" C.I. | 73' | |

REV. 105-0 1931 11 47



| PARCEL | KIND OF INSTRUMENT | DATE OF INSTRUMENT | GRANTOR | GRANTEE | RECORDED | REMARKS |
|--------|--------------------|--------------------|---|------------|----------|---------|
| #3 | A.B. Q.C.D. | 9-9-31 | JOHN D. CLEMENT | ST. OF VT. | 8 214 | 1-9-32 |
| #2 | A.B. Q.C.D. | 9-9-31 | GEO. LARRIE O. ALLEN & FLORENCE J. ORIGAS | ST. OF VT. | 8 214 | 1-9-32 |



B.M. No. 75 Spot on boulder 71 ft. left Sta. 565+60. Elev. 2299.69
 B.M. No. 76 Spot on boulder 253 ft. left Sta. 571+09. Elev. 2337.13
 B.M. No. 77 Spike in root of 20 Maple 19 ft. right Sta. 579+19. Elev. 2322.37

SERIES F 10 1050 SHEET 11 OF 47